

ENLARGED SKETCH OF TRACTS 31, 32 AND 33

- 4760 ANICADIO GUERRA
- 64100 ALICIA ALAMIA AND ALFONSO ALAMIA
- 3415 D. GUERRA & SONS
- 5945 LEON RODRIGUEZ
- 22803 FRANCISCO CALVILLO
- 12227 LEON RODRIGUEZ
- 19720 MRS. JUDIE H. EDWARDS-VZ. AND GEORGE FRIEL
- 17700 MRS. SUE H. EDWARDS-VZ. AND GEORGE FRIEL
- 20080 ALICIA ALAMIA AND LUIS ALAMIA, A.Y. BAKER, ADMIR.
- 30100 GONZALEZ
- 17500 FELIPE GARCIA
- 76500 A.E. CHAVEZ
- 49300 CARMEN CARDENAS DE CAVAZOS
- 82200 IDORRA CAVAZOS DE CAVAZOS
- 49300 FLORENCIO DE LA VIDA VELA AND ADELINA VELA, (R) EACH
- 141 SALVADOR CARDENAS VZ.
- 800 JOSEFA CARDENAS WIFE OF JUAN DE LA VINA
- 1480 JOSEFA CARDENAS WIFE OF JUAN DE LA VINA
- 16640 F.W. TAYLOR AND V.W. TAYLOR
- 10000 ALICIA ALAMIA DE RODRIGUEZ, ALFONSO ALAMIA
- 47230 CARLOTA VELA, DELFINA VELA, WYSEBURY, AND V.W. TAYLOR 1/4 EACH

# MAP

## OF SAN SALVADOR DEL TULE GRANT JUAN JOSE BALLI, ORIGINAL GRANTEE HIDALGO, KENNEDY BROOKS AND WILLACY COUNTIES, TEXAS SHOWING PARTITION IN CAUSE NO. 422 IN THE DISTRICT COURT OF HIDALGO COUNTY, TEXAS

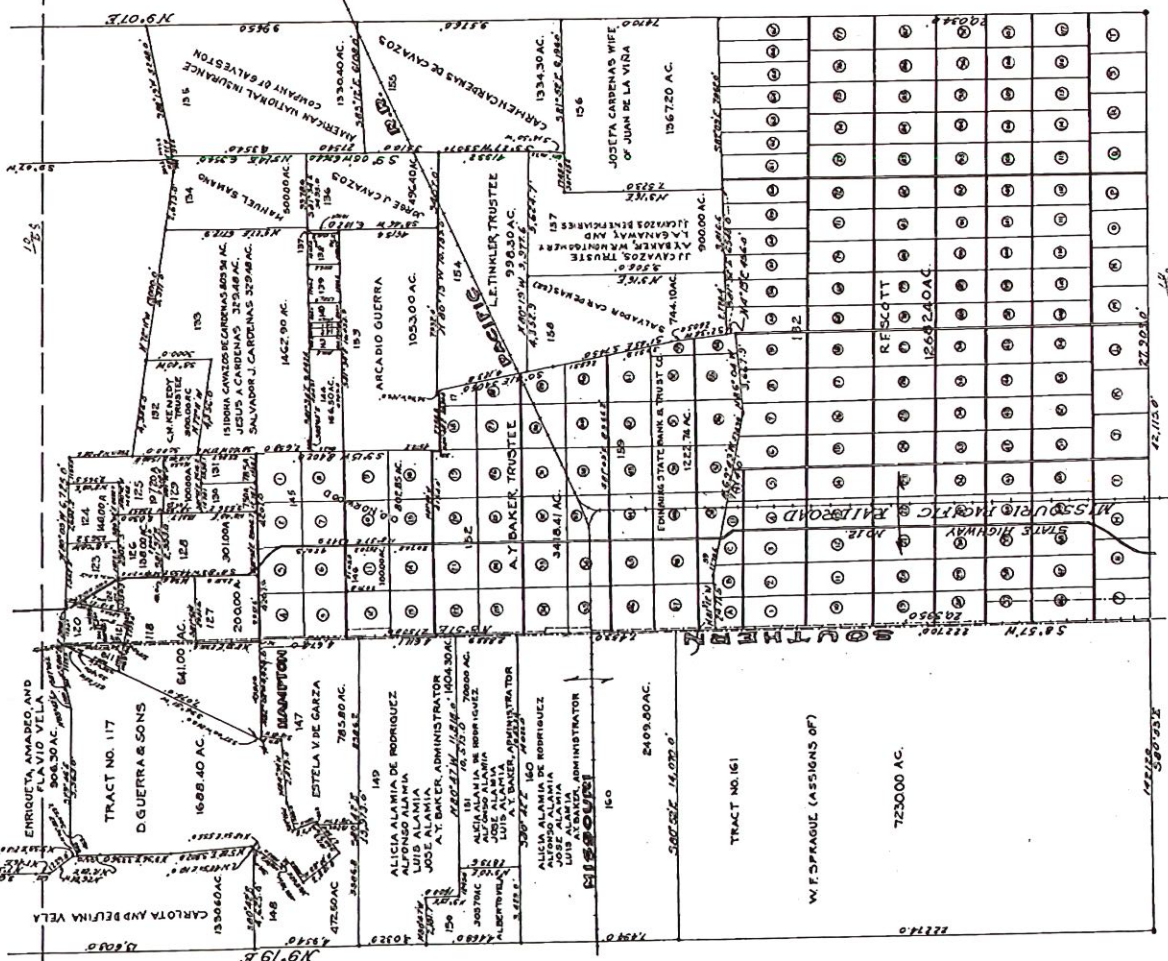
SCALE 1"=3000'

Embark  
SURVEYOR

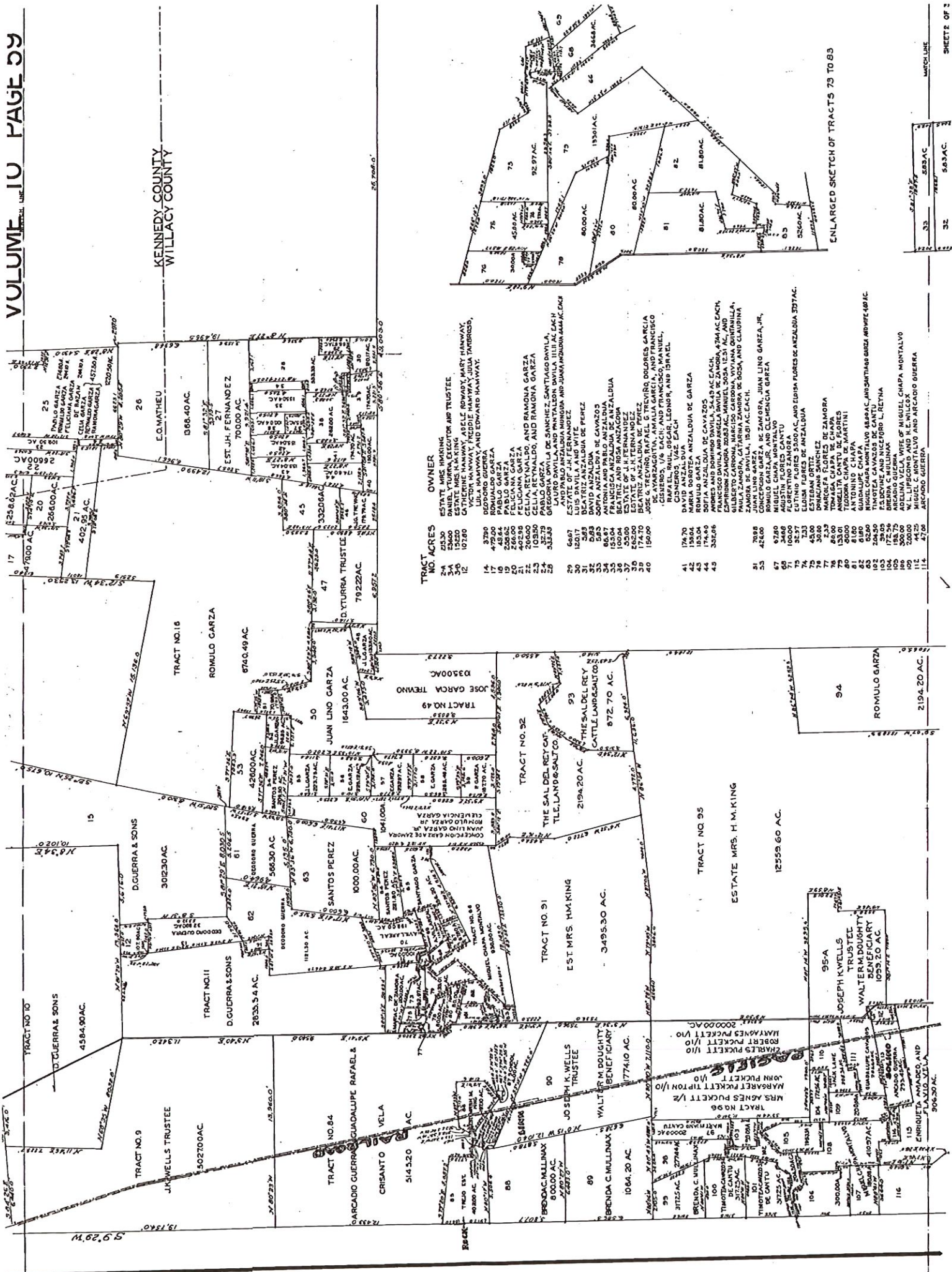
JUNE 17, 1930

I.C.M. CARD SURVEYOR DO HEREBY CERTIFY THAT THE ABOVE IS A TRUE REPRESENTATION OF THE SURVEY AND SUBDIVISION OF SAN SALVADOR DEL TULE GRANT, JUAN JOSE BALLI, ORIGINAL GRANTEE, AS MADE BY ME ON THE GROUND IN CAUSE NO. 422 IN THE DISTRICT COURT OF HIDALGO COUNTY, TEXAS

Embeard



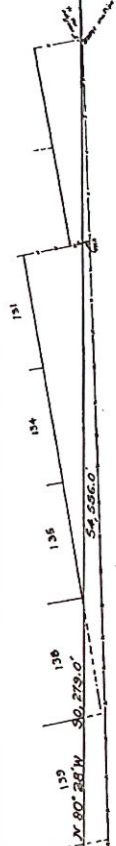
KENNEDY COUNTY  
WILLAC COUNTY



TRACT NO.	ACRES	OWNER
2A	213.30	ESTATE MRS. H. KING
2B	250.00	DANIEL Y. TORRES, EXECUTOR AMP TRUSTEE
3A	250.00	CATHERINE HANNAWAY, ADELE ROWAY, MARY HANNAWAY, VICTOR HANNAWAY, FREDIE HANNAWAY, JULIA TAMBORRO, VICTOR GUERRA, AND EDWARD HANNAWAY.
3C	107.80	ROMUALDO GARZA
14	3700	ROMUALDO GARZA
17	479.00	PABLO GARZA
18	48.84	PABLO GARZA
19	48.84	PABLO GARZA
20	266.00	FELICIANA GARZA
21	402.88	PABLO GARZA
22	208.00	CELIA REYNALDO, AND RAMONA GARZA
23	208.00	CELIA REYNALDO, AND RAMONA GARZA
24	32.79	PABLO GARZA
25	533.83	GRACIA DAVILA DE SAN JUAN, SANTIAGO DAVILA, AND PABLO ANZALDUA MUNGUA, AND JUANA ANZALDUA AAAA PAK
29	68.87	ESTATE OF J. H. FERNANDEZ
31	12.88	ESTATE OF J. H. FERNANDEZ
32	3.83	BEATRIZ ANZALDUA DE PEREZ
33	5.83	DAVID ANZALDUA DE SAN JUAN
34	8.83	SOPHIA ANZALDUA DE SAN JUAN
35	13.83	FRANCISCA ANZALDUA DE ANZALDUA
36	10.84	BEATRIZ AND ROSA ANZALDUA
37	52.00	ESTATE OF J. H. FERNANDEZ
38	174.70	BEATRIZ ANZALDUA DE PEREZ
40	159.00	JOSE S. WEAZUOLU, MANUELA GARZA, AND FRANCISCO GARCIA, CISNEROS, 1/3 EACH; AND FRANCISCO, MANUEL, RAFAEL, RUILO, OSCAR, LEONOR, AND ISRAEL, VID AND ANZALDUA, EACH
41	174.70	DAVID ANZALDUA
42	156.64	MARIA GOROTEA ANZALDUA DE GARZA
43	193.04	ROMULO GARZA DE CAYAZOS
44	332.86	FRANCISCO DAVILA AND ARGELA DAVILA DE ZAMORA, 1/2 EACH; FRANCISCO DAVILA AND ARGELA DAVILA DE ZAMORA, 1/2 EACH; ELIZABETH CARBON, MARCELO CARBON, VIVIANA QUINTANILLA, PAULA ZAMORA, CATARINA ZAMORA DE ROSA, AND CLAUDINA ZAMORA DE DAVILA, 1/3 EACH.
55	78.88	CONCEPCION GARZA DE ZAMORA, JUAN LINO GARZA, JR., ROMULO GARZA, JR., AND CLEMENCIA GARZA
56	42.80	CONCEPCION GARZA DE ZAMORA, JUAN LINO GARZA, JR., ROMULO GARZA, JR., AND CLEMENCIA GARZA
67	34.88	ROMULO GARZA, JR., AND CLEMENCIA GARZA
71	100.00	AUSTIN FLORES CANTU
72	75.37	FLORENTINO ZAMORA
73	45.00	FLORENTINO ZAMORA
74	45.00	FLORENTINO ZAMORA
75	30.00	ESTEBAN ORTIZ
76	30.00	ESTEBAN ORTIZ
77	30.00	ESTEBAN ORTIZ
78	30.00	ESTEBAN ORTIZ
79	133.01	ANGELITA CANTU DE FLORES
80	80.00	LOURDES CANTU DE MARTINI
81	81.00	GUADALUPE CHAPA
82	81.00	GUADALUPE CHAPA
83	81.00	GUADALUPE CHAPA
84	81.00	GUADALUPE CHAPA
85	81.00	GUADALUPE CHAPA
86	81.00	GUADALUPE CHAPA
87	81.00	GUADALUPE CHAPA
88	81.00	GUADALUPE CHAPA
89	81.00	GUADALUPE CHAPA
90	81.00	GUADALUPE CHAPA
91	81.00	GUADALUPE CHAPA
92	81.00	GUADALUPE CHAPA
93	81.00	GUADALUPE CHAPA
94	81.00	GUADALUPE CHAPA
95	81.00	GUADALUPE CHAPA
96	81.00	GUADALUPE CHAPA
97	81.00	GUADALUPE CHAPA
98	81.00	GUADALUPE CHAPA
99	81.00	GUADALUPE CHAPA
100	81.00	GUADALUPE CHAPA
101	81.00	GUADALUPE CHAPA
102	81.00	GUADALUPE CHAPA
103	81.00	GUADALUPE CHAPA
104	81.00	GUADALUPE CHAPA
105	81.00	GUADALUPE CHAPA
106	81.00	GUADALUPE CHAPA
107	81.00	GUADALUPE CHAPA
108	81.00	GUADALUPE CHAPA
109	81.00	GUADALUPE CHAPA
110	81.00	GUADALUPE CHAPA
111	81.00	GUADALUPE CHAPA
112	81.00	GUADALUPE CHAPA
113	81.00	GUADALUPE CHAPA
114	81.00	GUADALUPE CHAPA
115	81.00	GUADALUPE CHAPA
116	81.00	GUADALUPE CHAPA
117	81.00	GUADALUPE CHAPA
118	81.00	GUADALUPE CHAPA
119	81.00	GUADALUPE CHAPA
120	81.00	GUADALUPE CHAPA
121	81.00	GUADALUPE CHAPA
122	81.00	GUADALUPE CHAPA
123	81.00	GUADALUPE CHAPA
124	81.00	GUADALUPE CHAPA
125	81.00	GUADALUPE CHAPA
126	81.00	GUADALUPE CHAPA
127	81.00	GUADALUPE CHAPA
128	81.00	GUADALUPE CHAPA
129	81.00	GUADALUPE CHAPA
130	81.00	GUADALUPE CHAPA
131	81.00	GUADALUPE CHAPA
132	81.00	GUADALUPE CHAPA
133	81.00	GUADALUPE CHAPA
134	81.00	GUADALUPE CHAPA
135	81.00	GUADALUPE CHAPA
136	81.00	GUADALUPE CHAPA
137	81.00	GUADALUPE CHAPA
138	81.00	GUADALUPE CHAPA
139	81.00	GUADALUPE CHAPA
140	81.00	GUADALUPE CHAPA
141	81.00	GUADALUPE CHAPA
142	81.00	GUADALUPE CHAPA
143	81.00	GUADALUPE CHAPA
144	81.00	GUADALUPE CHAPA
145	81.00	GUADALUPE CHAPA
146	81.00	GUADALUPE CHAPA
147	81.00	GUADALUPE CHAPA
148	81.00	GUADALUPE CHAPA
149	81.00	GUADALUPE CHAPA
150	81.00	GUADALUPE CHAPA
151	81.00	GUADALUPE CHAPA
152	81.00	GUADALUPE CHAPA
153	81.00	GUADALUPE CHAPA
154	81.00	GUADALUPE CHAPA
155	81.00	GUADALUPE CHAPA
156	81.00	GUADALUPE CHAPA
157	81.00	GUADALUPE CHAPA
158	81.00	GUADALUPE CHAPA
159	81.00	GUADALUPE CHAPA
160	81.00	GUADALUPE CHAPA
161	81.00	GUADALUPE CHAPA
162	81.00	GUADALUPE CHAPA
163	81.00	GUADALUPE CHAPA
164	81.00	GUADALUPE CHAPA
165	81.00	GUADALUPE CHAPA
166	81.00	GUADALUPE CHAPA
167	81.00	GUADALUPE CHAPA
168	81.00	GUADALUPE CHAPA
169	81.00	GUADALUPE CHAPA
170	81.00	GUADALUPE CHAPA
171	81.00	GUADALUPE CHAPA
172	81.00	GUADALUPE CHAPA
173	81.00	GUADALUPE CHAPA
174	81.00	GUADALUPE CHAPA
175	81.00	GUADALUPE CHAPA
176	81.00	GUADALUPE CHAPA
177	81.00	GUADALUPE CHAPA
178	81.00	GUADALUPE CHAPA
179	81.00	GUADALUPE CHAPA
180	81.00	GUADALUPE CHAPA
181	81.00	GUADALUPE CHAPA
182	81.00	GUADALUPE CHAPA
183	81.00	GUADALUPE CHAPA
184	81.00	GUADALUPE CHAPA
185	81.00	GUADALUPE CHAPA
186	81.00	GUADALUPE CHAPA
187	81.00	GUADALUPE CHAPA
188	81.00	GUADALUPE CHAPA
189	81.00	GUADALUPE CHAPA
190	81.00	GUADALUPE CHAPA
191	81.00	GUADALUPE CHAPA
192	81.00	GUADALUPE CHAPA
193	81.00	GUADALUPE CHAPA
194	81.00	GUADALUPE CHAPA
195	81.00	GUADALUPE CHAPA
196	81.00	GUADALUPE CHAPA
197	81.00	GUADALUPE CHAPA
198	81.00	GUADALUPE CHAPA
199	81.00	GUADALUPE CHAPA
200	81.00	GUADALUPE CHAPA

ENLARGED SKETCH OF TRACTS 73 TO 83





TRACT NO. 2  
EST. MRS. H.M. KING  
4073.470 AC.

TRACT NO. 1  
EST. MRS. H.M. KING  
2.627400 AC.

BROOKS COUNTY  
HIDALGO COUNTY

KENNEDY COUNTY  
HIDALGO COUNTY

TRACT NO. 4  
EST. MRS. H.M. KING  
32.48800 AC.

TRACT NO. 5  
EST. MRS. H.M. KING  
2.92200 AC.

TRACT NO. 6  
EST. MRS. H.M. KING  
4.13720 AC.

TRACT NO. 7  
EST. MRS. H.M. KING  
6.48200 AC.

TRACT NO. 8  
DEODORO GUERRA  
2.25830 AC.

TRACT NO. 3  
ROBERT KLEBERG JR. TRUSTEE  
3.49800 AC.

