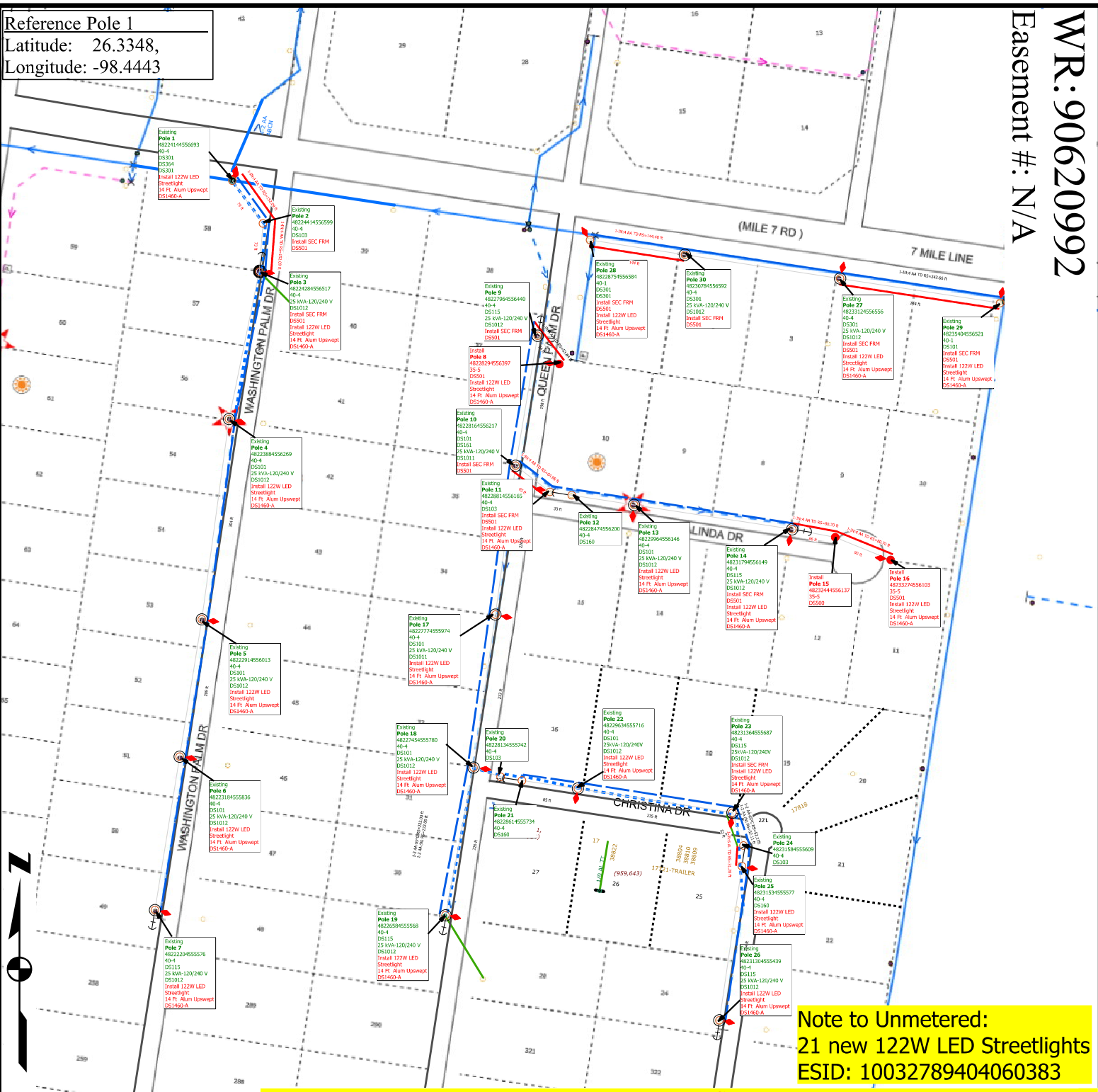


Reference Pole 1
 Latitude: 26.3348,
 Longitude: -98.4443



Note to Unmetered:
 21 new 122W LED Streetlights
 ESID: 10032789404060383

Note to Crew:

- COLOR CODE LEGEND**
- RED** -New Facilities
- GREEN** -Existing/Transfer Facilities
- BLUE** -Facilities to Be Removed
- Update each pole ID tag with correct 14 digit GPS location number marked in **RED** which matches the XY coordinates obtained by GPS. **Blue** numbers refer to previous location ID
- New LED Streetlight, Cust: Hidalgo County - Martin Martinez 956-292-7025
- Install 21 new LED streetlights on 14 foot brackets. Install needed facilities in order to serve the new lights.

Job Description: CUSTOMER SERVICE-CI-NEW SERVICE		WR: 90620992	
Customer: MARTIN MARTINEZ		WO: 374420	
Location: 175 38819 7 MILE LINE		Date Completed: 9/19/2025	Man Hours: 36.82
District: 175 - Mission		County: HIDALGO	Project ID: TXLEDTCC1
City: PENITAS		Crew HQ: 11712	
Circuit / Station: 94SB6000 CITRUS CITY		N V: 12.47KV	Phases: ABC N
Drawn By: Blanca Garza		Tree Trimming: BY CUST	OWR: N/A
Office #: 956-586-8513		Accessible: YES	ESID: 10032789404060383
Issued for:		Scale: 1:205	
FINAL		Page 1 of 5	



Reference Pole 1
 Latitude: 26.3348,
 Longitude: -98.4443

Existing
Pole 1
 48224144556693
 40-4
 DS301
 DS364
 DS301
 Install 122W LED
 Streetlight
 14 Ft Alum Upswept
 DS1460-A

Existing
Pole 2
 48224414556599
 40-4
 DS103
 Install SEC FRM
 DS501

Existing
Pole 3
 48224284556517
 40-4
 25 kVA-120/240 V
 DS1012
 Install SEC FRM
 DS501
 Install 122W LED
 Streetlight
 14 Ft Alum Upswept
 DS1460-A

Existing
Pole 9
 48227964556440
 40-4
 DS115
 25 kVA-120/240 V
 DS1012
 Install SEC FRM
 DS501

Install
Pole 8
 48228294556397
 35-5
 DS501
 Install 122W LED
 Streetlight
 14 Ft Alum Upswept
 DS1460-A

Existing
Pole 10
 48228164556217
 40-4
 DS101
 DS161
 25 kVA-120/240 V
 DS1011
 Install SEC FRM
 DS501

Existing
Pole 4
 48223884556269
 40-4
 DS101
 25 kVA-120/240 V
 DS1012
 Install 122W LED
 Streetlight
 14 Ft Alum Upswept
 DS1460-A

Existing
Pole 11
 48228814556165
 40-4
 DS103
 Install SEC FRM



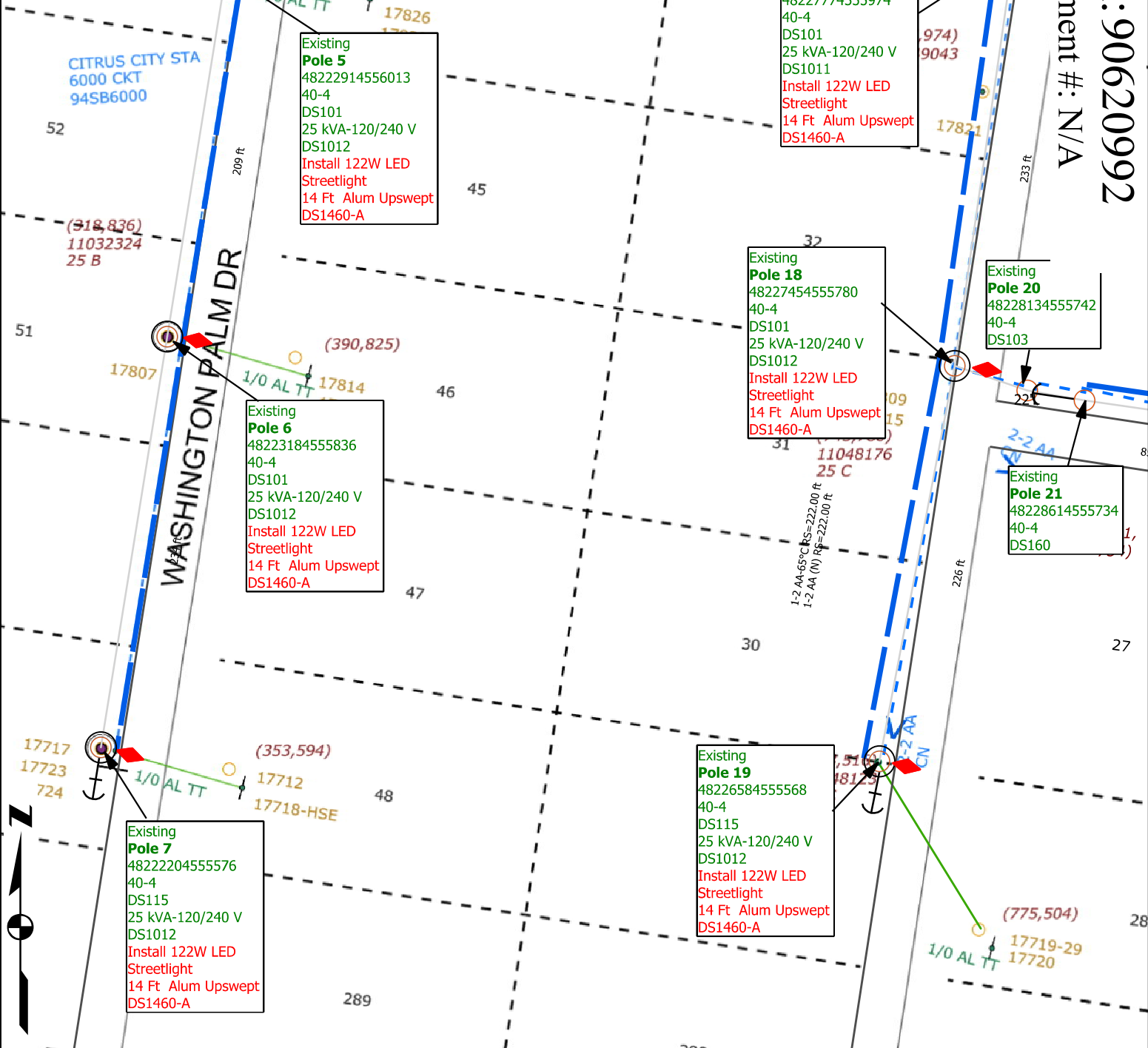
COLOR CODE LEGEND
 RED -New Facilities
 GREEN -Existing/Transfer Facilities
 BLUE -Facilities to Be Removed

Note to Crew:
 -Update each pole ID tag with correct 14 digit GPS location number marked in **RED** which matches the XY coordinates obtained by GPS. **Blue** numbers refer to previous location ID
 -New LED Streetlight, Cust: Hidalgo County - Martin Martinez 956-292-7025
 -Install 21 new LED streetlights on 14 foot brackets. Install needed facilities in order to serve the new lights.

Job Description: CUSTOMER SERVICE-CI-NEW SERVICE		WR: 90620992	
		WO: 374420	
Customer: MARTIN MARTINEZ		Date Completed: 9/19/2025	
Location: 175 38819 7 MILE LINE		County: HIDALGO	
District: 175 - Mission		City: PENITAS	
Circuit / Station: 94SB6000 CITRUS CITY		N V: 12.47KV	
Drawn By: Blanca Garza		Tree Trimming: BY CUST	
Office #: 956-586-8513		Accessible: YES	
Issued for:		Scale: 1:80	
FINAL		Page 2 of 5	
		Rev. N/A	



Reference Pole 1
 Latitude: 26.3348,
 Longitude: -98.4443



Note to Crew:

COLOR CODE LEGEND
 RED -New Facilities
 GREEN -Existing/Transfer Facilities
 BLUE -Facilities to Be Removed

-Update each pole ID tag with correct 14 digit GPS location number marked in **RED** which matches the XY coordinates obtained by GPS. **Blue** numbers refer to previous location ID

Job Description: CUSTOMER SERVICE-CI-NEW SERVICE		WR: 90620992
		WO: 374420
Customer: MARTIN MARTINEZ	Date Completed: 9/19/2025	Man Hours: 36.82
Location: 175 38819 7 MILE LINE	County: HIDALGO	Project ID: TXLEDTCC1
District: 175 - Mission	City: PENITAS	Crew HQ: 11712
Circuit / Station: 94SB6000 CITRUS CITY	N V: 12.47KV	Phases: ABC N
Drawn By: Blanca Garza	Tree Trimming: BY CUST	OWR: N/A
Office #: 956-586-8513	Accessible: YES	ESID: 10032789404060383
Issued for:		Scale: 1:80
FINAL		Page 3 of 5
Rev. N/A		



Reference Pole 1
 Latitude: 26.3348,
 Longitude: -98.4443

Existing
Pole 17
 48227774555974
 40-4
 DS101
 25 kVA-120/240 V
 DS1011
 Install 122W LED
 Streetlight
 14 Ft Alum Upswept
 DS1460-A

Install 122W LED
 Streetlight
 14 Ft Alum Upswept
 DS1460-A

DS115
 25 kVA-120/240 V
 DS1012
 Install SEC FRM
 DS501
 Install 122W LED
 Streetlight
 14 Ft Alum Upswept
 DS1460-A

Existing
Pole 18
 48227454555780
 40-4
 DS101
 25 kVA-120/240 V
 DS1012
 Install 122W LED
 Streetlight
 14 Ft Alum Upswept
 DS1460-A

Existing
Pole 20
 48228134555742
 40-4
 DS103

Existing
Pole 22
 48229634555716
 40-4
 DS101
 25kVA-120/240V
 DS1012
 Install 122W LED
 Streetlight
 14 Ft Alum Upswept
 DS1460-A

Existing
Pole 23
 48231364555687
 40-4
 DS115
 25kVA-120/240V
 DS1012
 Install SEC FRM
 Install 122W LED
 Streetlight
 14 Ft Alum Upswept
 DS1460-A

Existing
Pole 21
 48228614555734
 40-4
 DS160

Existing
Pole 24
 48231584555609
 40-4
 DS103

Existing
Pole 19
 48226584555568
 40-4
 DS115
 25 kVA-120/240 V
 DS1012
 Install 122W LED
 Streetlight
 14 Ft Alum Upswept
 DS1460-A

Existing
Pole 25
 48231534555577
 40-4
 DS160
 Install 122W LED
 Streetlight
 14 Ft Alum Upswept
 DS1460-A

Existing
Pole 26
 48231304555439
 40-4
 DS115
 25 kVA-120/240 V
 DS1012
 Install 122W LED
 Streetlight
 14 Ft Alum Upswept
 DS1460-A



COLOR CODE LEGEND
 RED -New Facilities
 GREEN -Existing/Transfer Facilities
 BLUE -Facilities to Be Removed

Note to Crew:
 -Update each pole ID tag with correct 14 digit GPS location number marked in **RED** which matches the XY coordinates obtained by GPS. **Blue** numbers refer to previous location ID
 -New LED Streetlight, Cust: Hidalgo County - Martin Martinez 956-292-7025
 -Install 21 new LED streetlights on 14 foot brackets. Install needed facilities in order to serve the new lights.

Job Description: CUSTOMER SERVICE-CI-NEW SERVICE		WR: 90620992	
		WO: 374420	
Customer: MARTIN MARTINEZ		Date Completed: 9/19/2025	
Location: 175 38819 7 MILE LINE		County: HIDALGO	
District: 175 - Mission		City: PENITAS	
Circuit / Station: 94SB6000 CITRUS CITY		N V: 12.47KV	
Drawn By: Blanca Garza		Tree Trimming: BY CUST	
Office #: 956-586-8513		Accessible: YES	
Issued for:		Scale: 1:90	
<h1>FINAL</h1>		Page 4 of 5	
		Rev. N/A	



Reference Pole 1
 Latitude: 26.3348,
 Longitude: -98.4443

Existing Pole 28
 48228754556584
 40-1
 DS301
 DS301
 Install SEC FRM
 DS501
 Install 122W LED
 Streetlight
 14 Ft Alum Upswept
 DS1460-A

Existing Pole 30
 48230784556592
 40-4
 DS301
 25 kVA-120/240 V
 DS1012
 Install SEC FRM
 DS501

Existing Pole 27
 48233124556556
 40-4
 DS301
 25 kVA-120/240 V
 DS1012
 Install SEC FRM
 DS501
 Install 122W LED
 Streetlight
 14 Ft Alum Upswept
 DS1460-A

Existing Pole 29
 4823540455652
 40-1
 DS101
 Install SEC FRM
 DS501
 Install 122W LED
 Streetlight
 14 Ft Alum Upswept
 DS1460-A

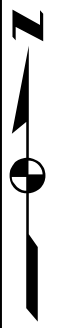
Existing Pole 13
 48229964556146
 40-4
 DS101
 25 kVA-120/240 V
 DS1012
 Install 122W LED
 Streetlight
 14 Ft Alum Upswept
 DS1460-A

Existing Pole 14
 48231794556149
 40-4
 DS115
 25 kVA-120/240 V
 DS1012
 Install SEC FRM
 DS501
 Install 122W LED
 Streetlight
 14 Ft Alum Upswept
 DS1460-A

Install Pole 15
 48232444556137
 35-5
 DS501
 DS500

Install Pole 16
 48233274556103
 35-5
 DS501
 Install 122W LED
 Streetlight
 14 Ft Alum Upswept
 DS1460-A

Solar
 5.52 KW



COLOR CODE LEGEND
 RED -New Facilities
 GREEN -Existing/Transfer Facilities
 BLUE -Facilities to Be Removed

Note to Crew:
 -Update each pole ID tag with correct 14 digit GPS location number marked in RED which matches the XY coordinates obtained by GPS. Blue numbers refer to previous location ID
 -New LED Streetlight, Cust: Hidalgo County - Martin Martinez 956-292-7025
 -Install 21 new LED streetlights on 14 foot brackets. Install needed facilities in order to serve the new lights.

Job Description: CUSTOMER SERVICE-CI-NEW SERVICE		WR: 90620992	
		WO: 374420	
Customer: MARTIN MARTINEZ		Date Completed: 9/19/2025	
Location: 175 38819 7 MILE LINE		County: HIDALGO	
District: 175 - Mission		City: PENITAS	
Circuit / Station: 94SB6000 CITRUS CITY		N V: 12.47KV	
Drawn By: Blanca Garza		Tree Trimming: BY CUST	
Office #: 956-586-8513		Accessible: YES	
Issued for:		Scale: 1:80	

FINAL

