

NasdaqGS - Delayed Quote • USD

# Adobe Inc. (ADBE)

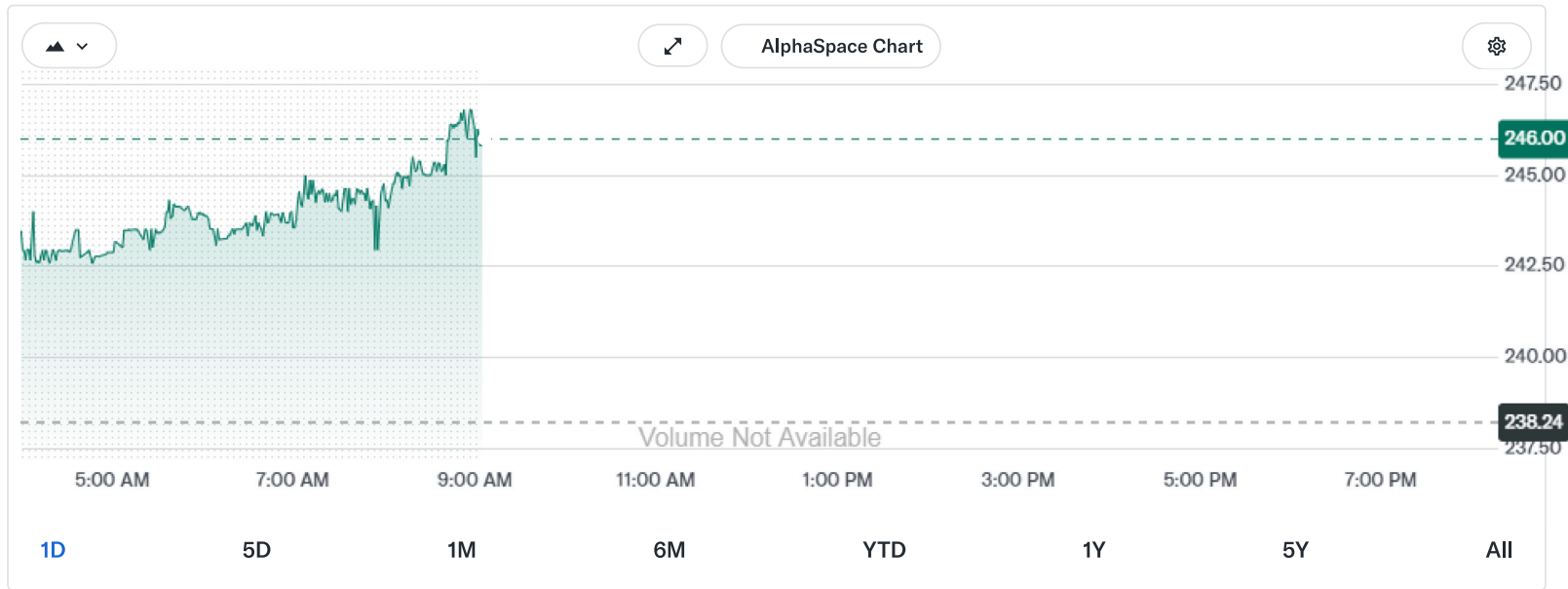
**241.44** **+3.20 (+1.34%)**

At close: May 28 at 4:00:01 PM EDT

**246.00** **+4.56 (+1.89%)**

Pre-Market: 9:05:47 AM EDT

[Trade Adobe on Coinbase](#) [Trading disclosure](#)



## News headlines

Adobe's Q1 FY2026 results show strong growth in AI tools despite challenges in its stock photo business. Key figures include a **75% growth** in Firefly's annual recurring revenue (ARR) and a total revenue of **\$6.40 billion**, indicating resilience amid competition and management transitions.

Updated 14m ago • Powered by Yahoo Scout

[View more](#)

Previous Close

**238.24**

Open

**239.57**

Bid

**242.15 x 100**

Ask

**244.25 x 600**

Day's Range

**236.66 - 244.76**

52 Week Range

**224.13 - 421.48**

Volume

**3,306,158**

Avg. Volume

**5,402,793**

Market Cap (intraday)

**97.59B**

Beta (5Y Monthly)

**1.42**

PE Ratio (TTM)

**14.06**

EPS (TTM)

**17.17**

Earnings Date

**Jun 11, 2026**

Forward Dividend & Yield

**--**

Ex-Dividend Date

**Mar 24, 2005**

1y Target Est

**327.28**

Adobe Inc. operates as a technology company worldwide. The Digital Media segment offers products and services that enable individuals, teams, and enterprises to create, publish, and promote content. This segment serves photographers, video editors, graphic and experience designers, game developers, content creators, students, marketers, business owners, knowledge workers, and consumers. The Digital Experience segment provides an integrated platform; and products, services, and solutions that enable brands and businesses to create, manage, execute, measure,...

[www.adobe.com](http://www.adobe.com)

**31,360**  
Full Time Employees

**November 28**  
Fiscal Year Ends

**Technology**  
Sector

**Software - Application**  
Industry

[More about Adobe Inc.](#)

## Recent News

[All](#) [News](#) [Earnings Calls](#) [Press Releases](#) [SEC Filings](#)

### Adobe's Own AI Tool Is Destroying Its Own Stock Photo Business. Management Just Admitted It

24/7 Wall St. • 1h ago



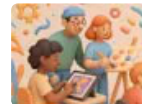
### Michael Burry Calls Adobe A 'Fat Pitch' In Latest Saas Analysis – Backs Firefly And AI Tie-Ups With OpenAI, Google

Stocktwits • 6h ago



### Adobe Analytics Praise And UK AI Sales Data Shape Investor Story

Simply Wall St. • 11h ago



### Shopping with AI leads to more sales than by traditional online searches – Adobe

PA Media: Money • 14h ago



### Adobe Systems (ADBE) Beats Stock Market Upswing: What Investors Need to Know

Zacks • 15h ago



### Figma Gets an Activist Investor. Exhibit A on Why Companies Don't Want to Go Public.

Barrons.com • 18h ago

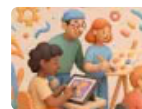


### Salesforce Gives Lukewarm Outlook That Fails to Ease AI Fear

Bloomberg • 21h ago

### Latest News In E-Commerce - E-Commerce Revolution Driven By Global Digital Connectivity

Simply Wall St. • 1d ago



### Synopsys (SNPS) Tops Q2 Earnings and Revenue Estimates

Zacks • 1d ago



### Top Digital Analytics Platforms Named 2026 Champions in Info-Tech Research Group's Data Quadrant Report

PR Newswire • 1d ago



### Two 'Strong Buy' Stock Ideas—Delivered Monthly

Ad • Seeking Alpha

[View More →](#)

## Featured Community Analysis ⓘ



**Brett Ashcroft Green, CFP®**  
@brettashcroftgreen • Mar 16

**\$21M FA**

#### Adobe's Earnings Beat, Yet The Stock Falls

Adobe delivered another strong earnings report, yet the stock still fell after the release. The reaction highlights how powerful market narratives can be, particularly when artificial intelligence disruption is involved.

In its latest quarter, **\$ADBE** reported revenue of \$6.40 billion, representing 12% year-over-year...

7 Comments

\$55M



## Performance Overview

Trailing total returns as of 5/28/2026, which may include dividends or other distributions. Benchmark is [S&P 500 \(^GSPC\)](#).

#### YTD Return

ADBE  
**- 31.02%**  
S&P 500 (^GSPC)  
**+ 10.49%**

#### 1-Year Return

ADBE  
**- 41.43%**  
S&P 500 (^GSPC)  
**+ 28.45%**

#### 3-Year Return

ADBE  
**- 41.88%**  
S&P 500 (^GSPC)  
**+ 79.85%**

#### 5-Year Return

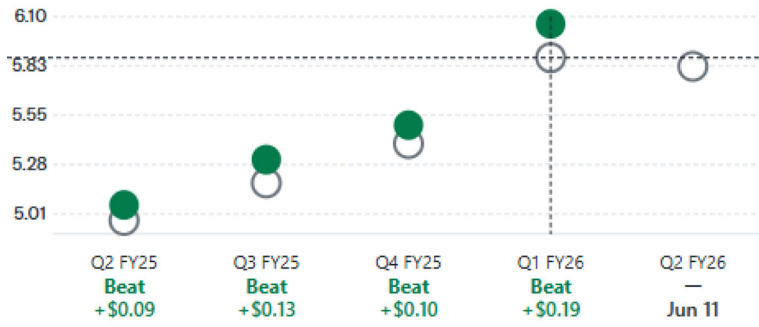
ADBE  
**- 52.15%**  
S&P 500 (^GSPC)  
**+ 79.91%**

# Earnings Trends

## Earnings Per Share

GAAP Normalized

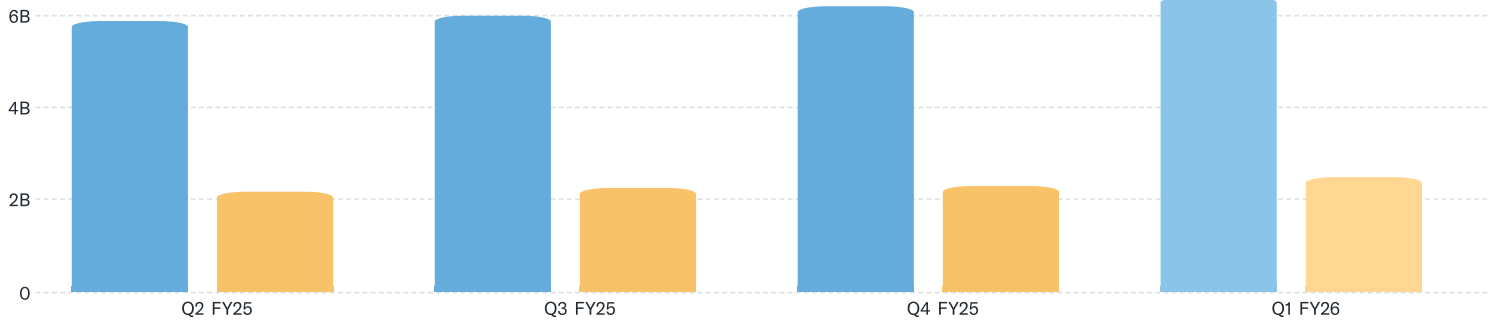
Q1 FY26 ○ Estimate +5.87 Actual +6.06



## Revenue vs. Earnings

Annual Quarterly

Q1 FY26 Revenue 6.4B Earnings 2.49B



View More →

## Analyst Insights

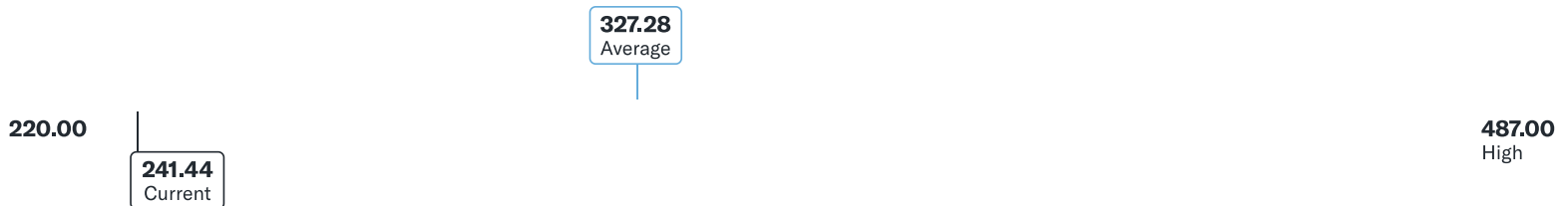
### Top Analyst

Wolfe Research

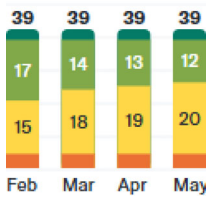
67/100

Latest Rating **OUTPERFORM**

### Analyst Price Targets



### Analyst Recommendations



- Strong Buy
- Buy
- Hold
- Underperform
- Sell

### Latest Rating

Date	4/27/2026
Analyst	Mizuho
Rating Action	<b>Downgrade</b>
Rating	<b>Neutral</b>
Price Action	<b>Lowers</b>
Price Target	315 -> 270

[View More →](#)

## Statistics

### Valuation Measures

**Current**   Quarterly   Annual 🔒

As of 5/28/2026

Market Cap	<b>97.59B</b>
Enterprise Value	<b>97.36B</b>
Trailing P/E	<b>14.07</b>
Forward P/E	<b>10.29</b>
PEG Ratio (5yr expected)	<b>0.69</b>
Price/Sales (ttm)	<b>4.15</b>
Price/Book (mrq)	<b>8.54</b>
Enterprise Value/Revenue	<b>3.98</b>
Enterprise Value/EBITDA	<b>9.72</b>

### Financial Highlights

#### Profitability and Income Statement

Profit Margin	<b>29.48%</b>
Return on Assets (ttm)	<b>18.91%</b>
Return on Equity (ttm)	<b>58.77%</b>
Revenue (ttm)	<b>24.45B</b>
Net Income Avi to Common (ttm)	<b>7.21B</b>
Diluted EPS (ttm)	<b>17.17</b>

#### Balance Sheet and Cash Flow

Total Cash (mrq)	<b>6.9B</b>
Total Debt/Equity (mrq)	<b>58.34%</b>
Levered Free Cash Flow (ttm)	<b>9.32B</b>

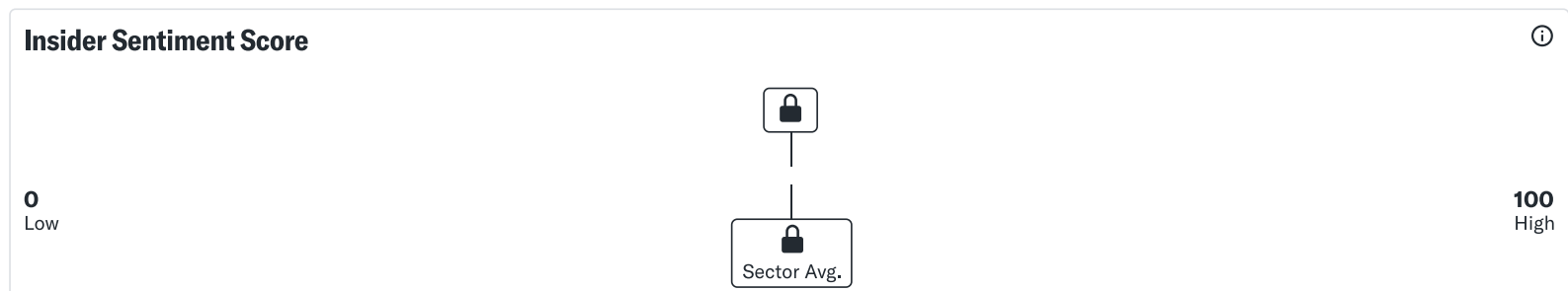
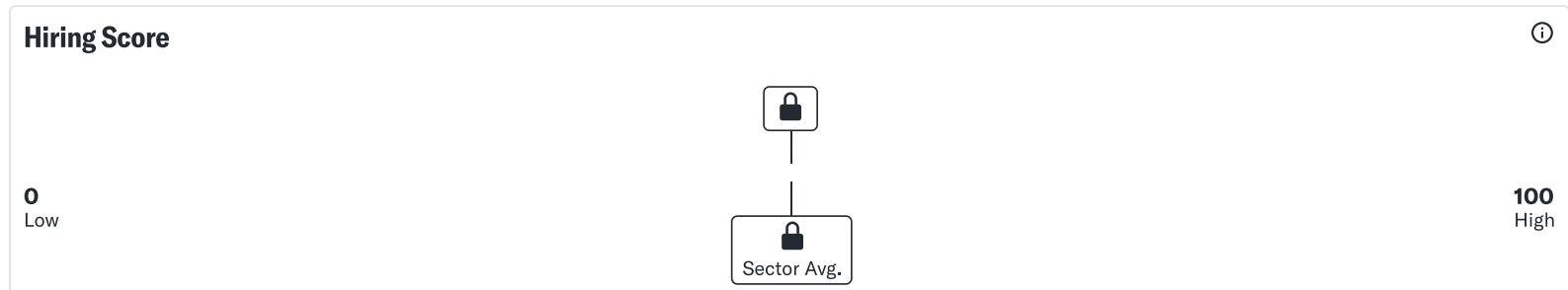
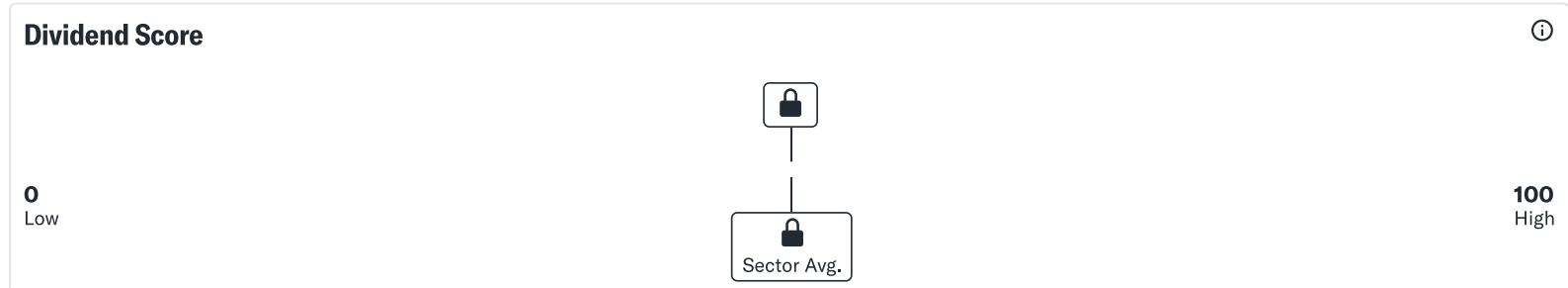
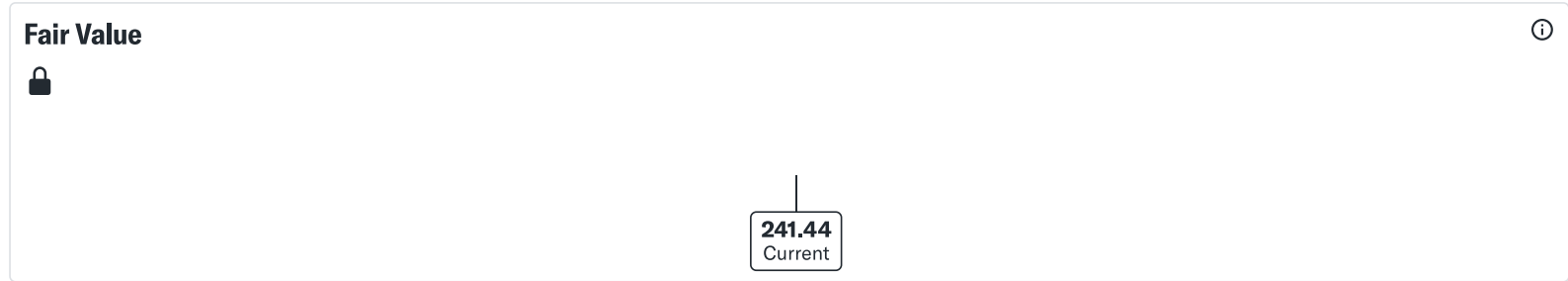
# Compare

Compare

Select to analyze similar companies using key performance metrics; select up to 4 stocks.

<b>ADBE</b> Adobe Inc. ✓ <b>241.44</b> <b>+1.34%</b> Mkt Cap 97.59B Industry Software—Application	<b>CRM</b> Salesforce, Inc. + <b>176.17</b> <b>-0.75%</b> Mkt Cap 144.283B Industry Software—Application	<b>NOW</b> ServiceNow, Inc. + <b>108.73</b> <b>+6.47%</b> Mkt Cap 112.134B Industry Software—Application	<b>UBER</b> Uber Technologies, Inc. + <b>70.92</b> <b>+0.27%</b> Mkt Cap 144.365B Industry Software—Application	<b>SHOP</b> Shopify Inc. <b>115.03</b> <b>+7.91%</b> Mkt Cap Industry Software—Application
---	--	--	---	--

## Company Insights



# Research Reports

## Adobe: Serving Up Customer...

Adobe provides content creation, document...

Rating: | Price Target:



Morningstar • last month

## US Large Cap Pick List - April 2026

This pick list highlights constituents of the Morningstar US Large Cap Index that we believe offer investors the best risk-adjuste...

Morningstar • last month

## Downgrading to HOLD

Based in San Jose, California, Adobe Inc...

Rating: | Price Target:



Argus • 2 months ago

## This is a 'Fed week,' but there is no...

This is a 'Fed week,' but there is no expected movement in interest rates. Still, investors will be listening carefully to the Fed's thoughts...

Argus • 2 months ago

[View More](#) →

## People Also Watch

**CRM**

Salesforce, Inc.

**176.17** **-0.75%**

**PYPL**

PayPal Holdings, Inc.

**44.46** **+1.60%**

**NOW**

ServiceNow, Inc.

**108.73** **+6.47%**

**SHOP**

Shopify Inc.

**115.03** **+7.91%**

**MA**

Mastercard Incorporated

**493.75** **-0.26%**

**yahoo!finance**

Copyright © 2026 Yahoo.

All rights reserved.



### Trending Topics

Dow Jones

S&P 500

DAX Index

Nvidia

Tesla

DJT

Tariffs

### Explore Further

Mortgages

Credit Cards

Sectors

[Crypto Heatmap](#)

[Financial News](#)

## **About**

[Data Disclaimer](#)

[Help](#)

[Feedback](#)

[Sitemap](#)

[Licensing](#)

[What's New](#)

[About Our Ads](#)

[Premium Plans](#)

[Terms and Privacy Policy](#)

[Your Privacy Choices](#) 