



New Hidalgo County Courthouse

Geotechnical Engineering & Materials Testing Services

**Experience. Reputation.
Results.**

Terracon

Experience

80

Courthouse Projects Nationwide Over Past 15 Years

Terracon

Experience

230

Local RGV Government Projects Over Past 5 Years

Terracon

Project Team Overview



Jorge A. Flores, P.G., Principal
Office Manager
Environmental Department
Manager
jorge.flores@terracon.com
Office: 956.588.2475
Mobile: 956.245.2319



Alfonso A. Soto, P.E., D. GE, F. ASCE, Principal
Geotechnical Department Manager
CMT Department Manager
alfonso.soto@terracon.com
Office: 956.588.2480
Mobile: 956.884.3582



Martin Reyes
Geotechnical Graduate Engineer
Project Manager
martin.reyes@terracon.com
Office: 956.588.2481
Mobile: 956.285.0557



Stephany Chacón, E.I.T.
Geotechnical
Project Manager
stephany.chacon@terracon.com
Office: 956.588.2479
Mobile: 956.451.2693



Juan M. Borjon, P.E.
CMT Project Manager
juan.borjon@terracon.com
Office: 956.588.2504
Mobile: 956.207.6868



Guadalupe (Lupe) Leal
Senior CMT Project Manager
lupe.leal@terracon.com
Office: 956.588.2474
Mobile: 956.535.0635



Chuck A. Gregory, P.E., Senior
Principal/Vice President
Regional Manager
chuck.gregory@terracon.com
Office: 210.714.2091
Mobile: 210.602.7048

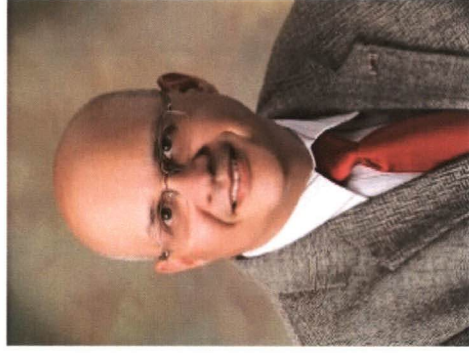


Stephanie M. Rendon, MBA
Client Development Specialist
stephanie.rendon@terracon.com
Office: 956.588.2478
Mobile: 210.559.5443

Field & Lab Staff



Alfonso A. Soto, P. E., D. GE, F. ASCE



- 25+ Years Experience
- Diplomat, Geotechnical Engineering (D. GE). The Academy of Geo-Professionals ensures that geotechnical engineers have specialized knowledge and skills in their field of practice.
- Fellow of the American Society of Civil Engineers (F. ASCE). A prestigious honor held by fewer than 4% of ASCE members.

Significant Local Project Experience

- Federal Building and Courthouse - Brownsville



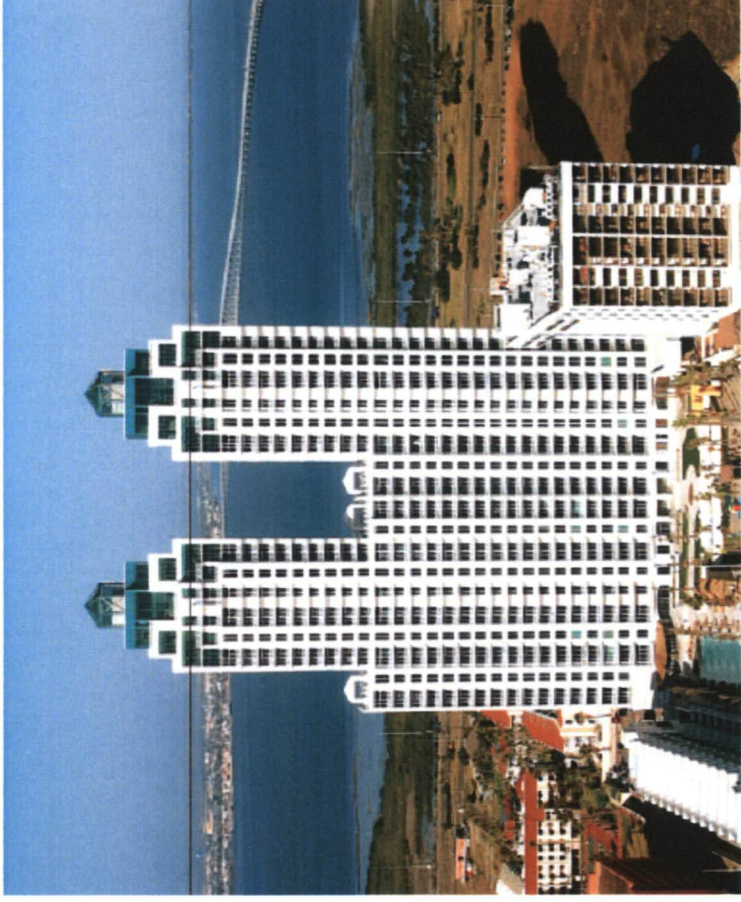
Significant Local Project Experience

- Federal District Office Building - McAllen



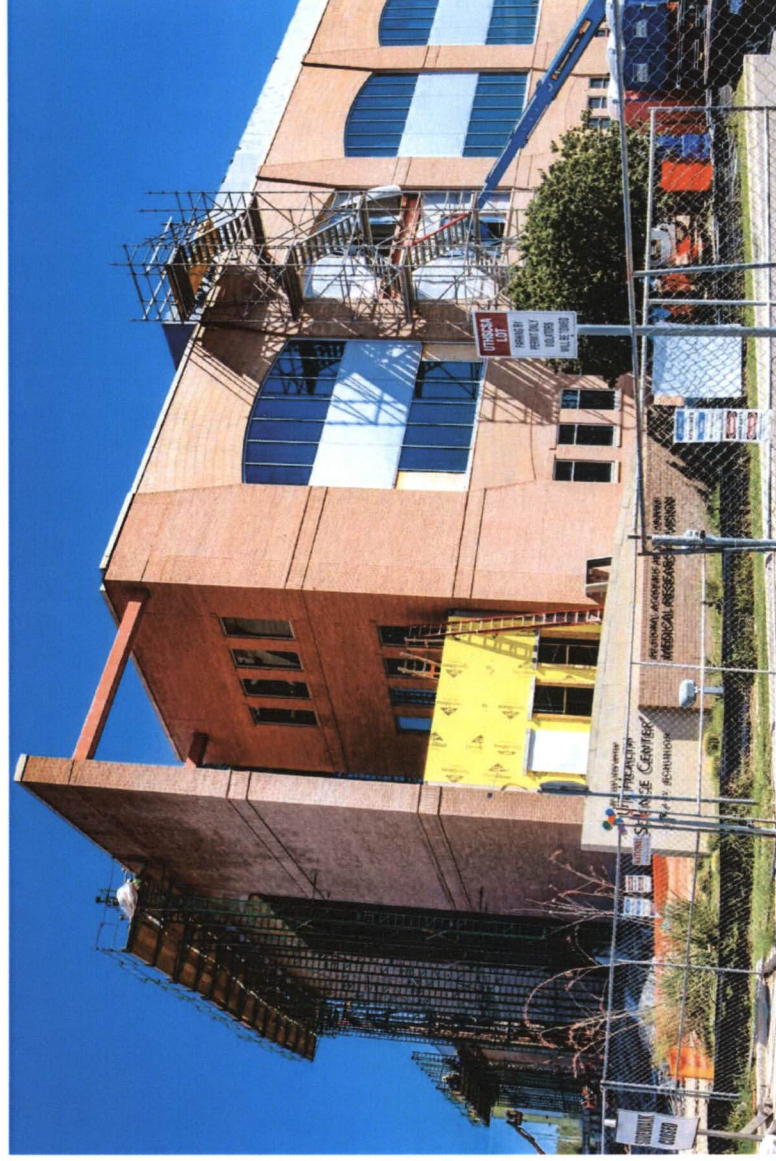
Significant Local Project Experience

- Sapphire Condominiums - South Padre Island



Significant Local Project Experience

- South Texas Medical Academic Building - Edinburg



Terracon

Significant Local Project Experience

- La Plaza Parking Garage - Brownsville



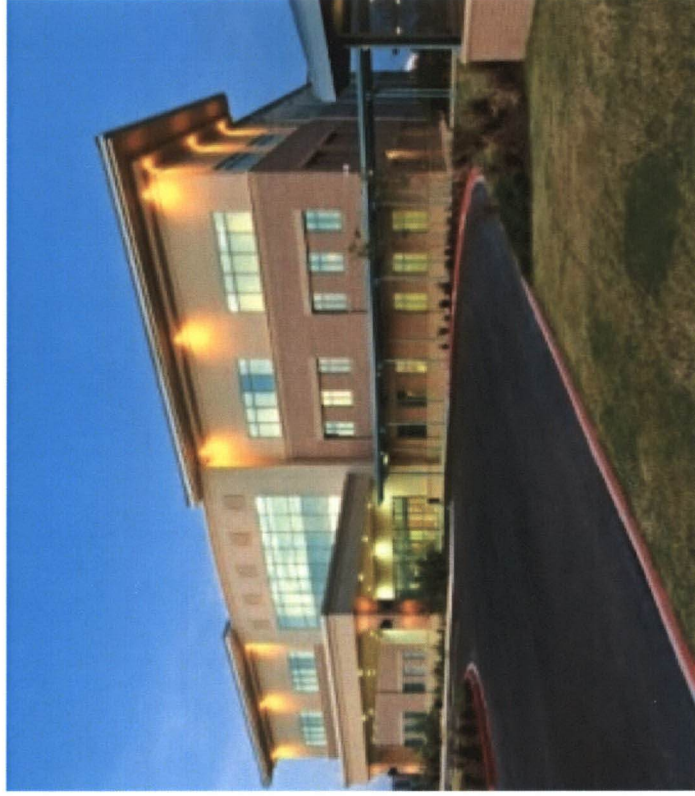
Significant Local Project Experience

- Bert Ogden Arena – Edinburg



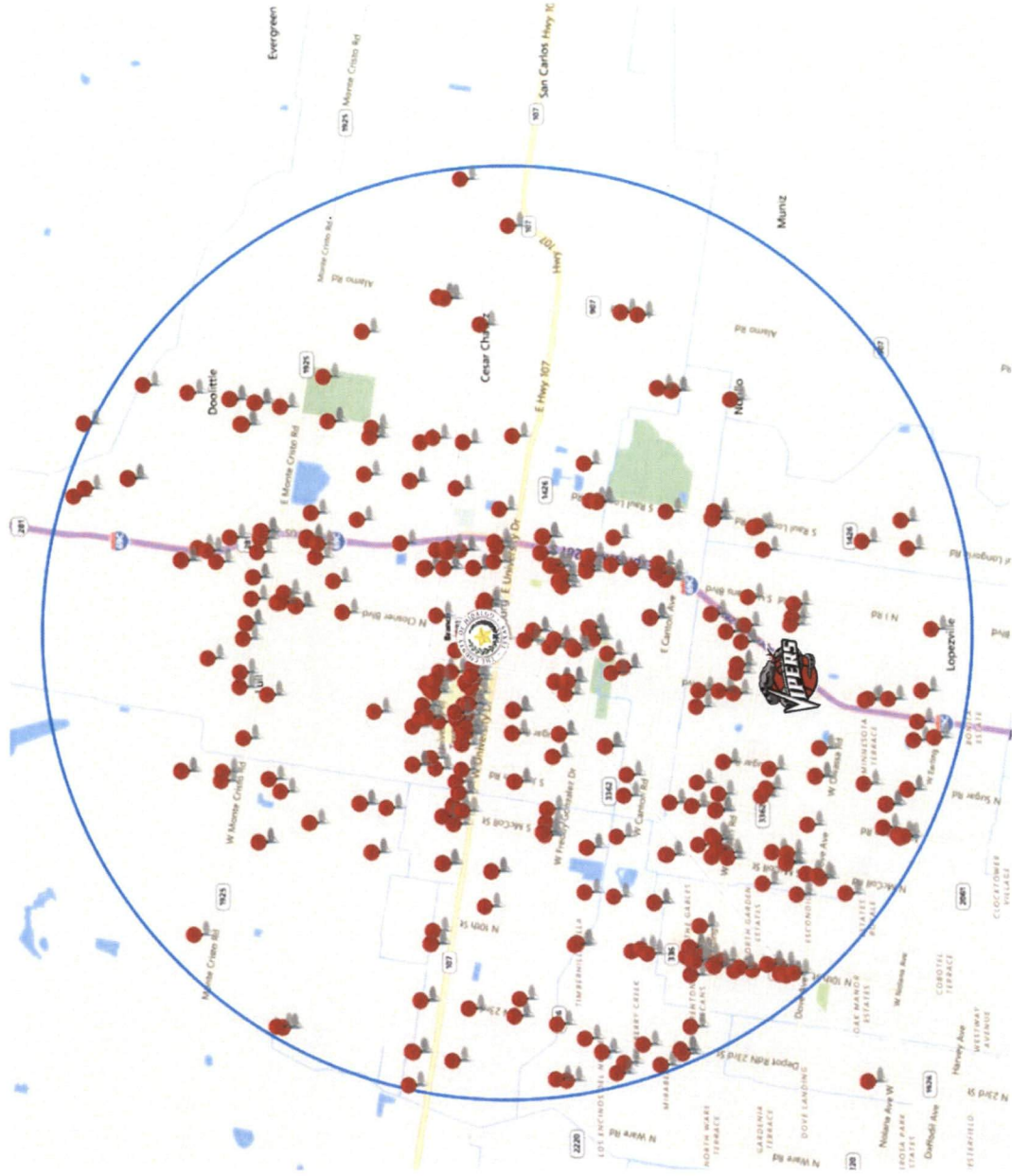
Significant Local Project Experience

- VA Clinic – Harlingen & McAllen



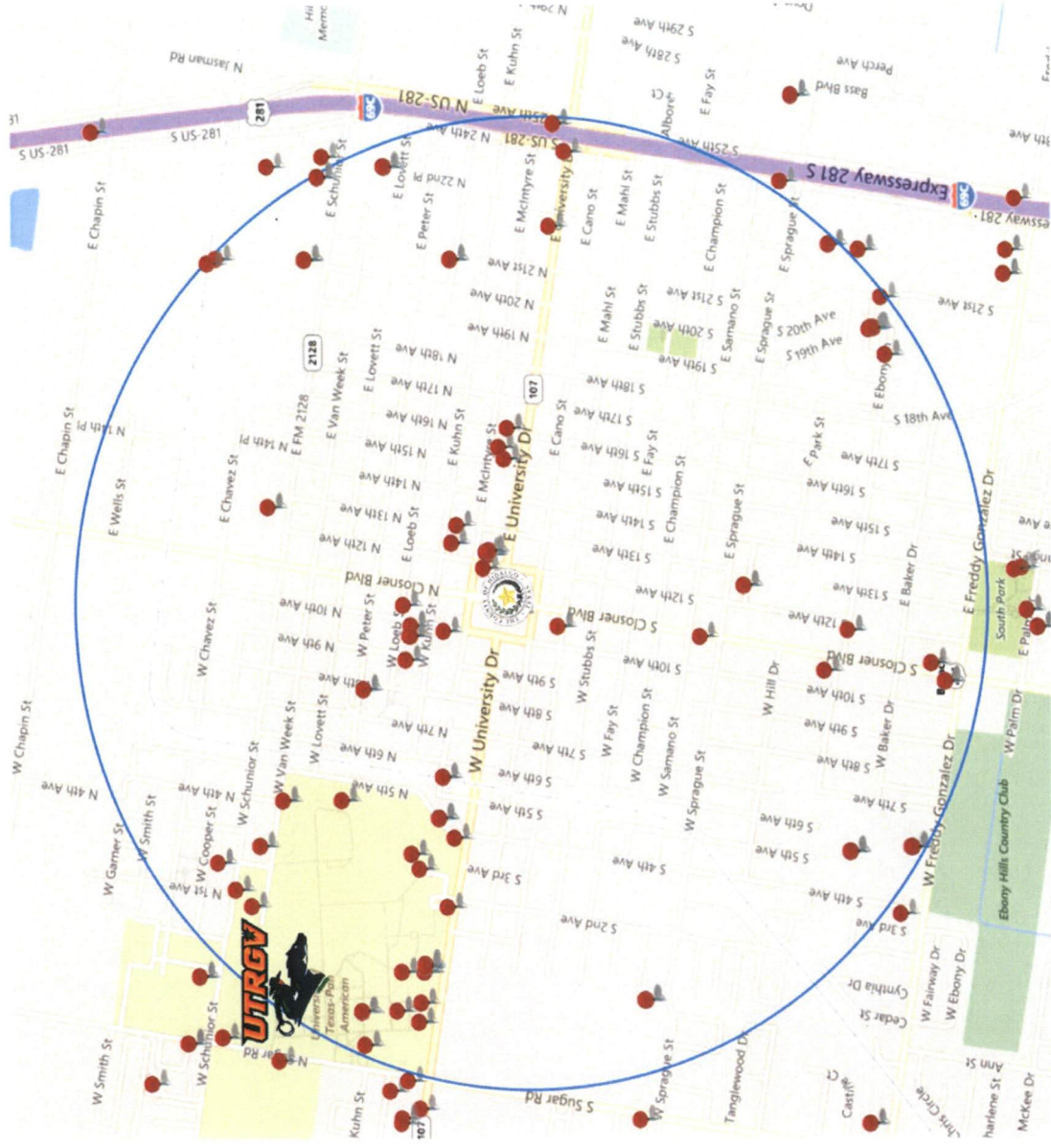
Projects in Vicinity

- 5 Mile Radius
- 500+ Projects
- Future Bert Ogden Arena



Projects in Vicinity

- 1 Mile Radius
- 100+ Projects
- UTRGV – South Texas Medical Academic Building



Safety



Safety is one of Terracon's core values and our commitment to an "Injury and Incident Free (IIF)" philosophy is one of the pillars of our culture.

Geotechnical

- Foundation analysis and design
- Groundwater control
- In-situ testing and performance monitoring
- Pavement design and subgrade evaluation
- Site characterization
- Soil stabilization and ground improvement



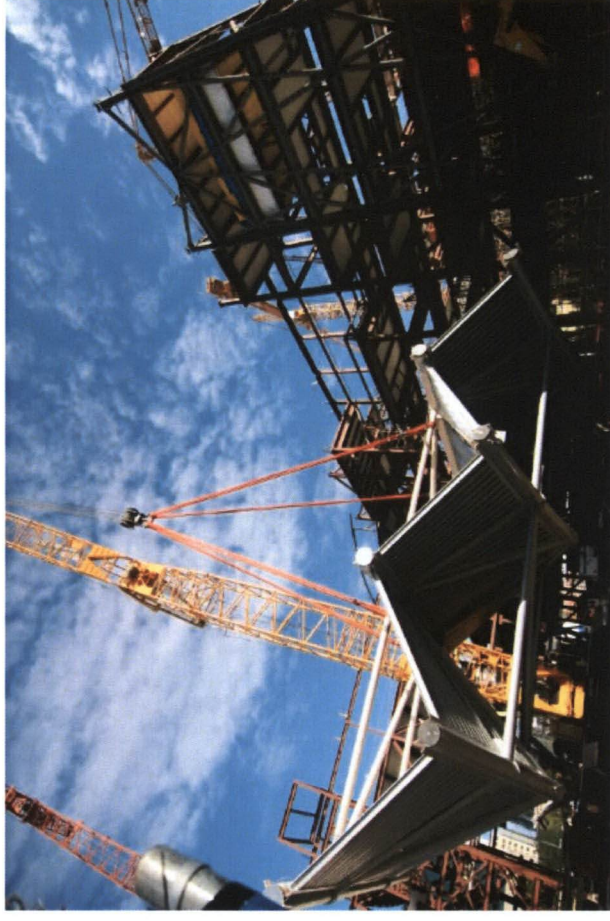
Pressuremeter Testing



- Evaluates Subsurface Conditions Directly, In-Situ
- Determines Stress-Strain Soil Characteristics
- Relates Soil Strength and Compressibility to Foundation Bearing Capacity and Settlement
- Increases Bearing Capacity Safely

Materials

- On-site observation and monitoring during earthwork and foundation installation
- Design and review of concrete, grout, and asphaltic concrete mixes
- Field and laboratory testing of concrete and analysis of test results
- Special inspections
- Visual weld inspections/ nondestructive testing on structural steel
- Forensic investigation and evaluation of in-place construction materials



Construction Materials Engineering and Laboratory Management System (CMELMS™)

1. Makes all parties aware of our scope and role so that required services aren't overlooked.
2. Establishes a process for rapid transfer of results.
3. Maintains a tracking system for material performance, report distribution, and non-conformance items.
4. Allows for real-time management of scope, budgets and costs.

What Can Terracon Do For YOU?

- Experience.
- Reputation.
- Results.



Questions?