




services and plans of a State of Texas licensed engineer as necessary to ensure the proper design of the sign that compliments the park development, and obtaining and donating the services of certified/licensed professionals responsible for the installation of the stone base according to specifications.

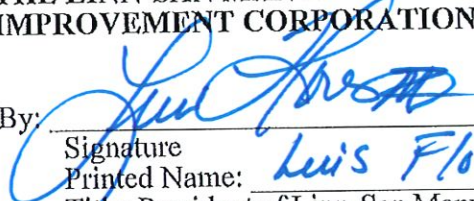
4. Except as modified herein, all terms and conditions of the MOU, including Approval of Memorandum of Understanding, remain in full force and effect. County and Corporation ratify and confirm the terms and provisions of the Agreement as amended herein.

EXECUTED and effective as of the day and year first written above.

**THE COUNTY:  
COUNTY OF HIDALGO, TEXAS**

By:   
Richard F. Cortez, County Judge

**THE LINN-SAN MANUEL COMMUNITY  
IMPROVEMENT CORPORATION:**

By:   
Signature  
Printed Name: Luis Flores  
Title: President of Linn-San Manuel Community Investment Corporation

ATTEST:


  
Arturo Guajardo Jr., County Clerk



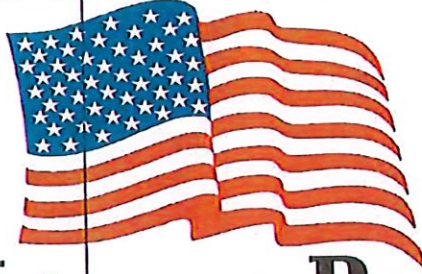
APPROVED BY  
COMMISSIONERS COURT  
ON: 7/13/21

Approved by Commissioners Court on:

APPROVED AS TO FORM:  
Office of the Hidalgo County Criminal District Attorney  
Ricardo Rodriguez, Jr.

By:   
Robert Vifia, III, Assistant District Attorney

16'-0"  
Linn-San Manuel



24"  
25"  
12'-0"  
Veterans Park

40'-0"

5'-6"

8'-0"

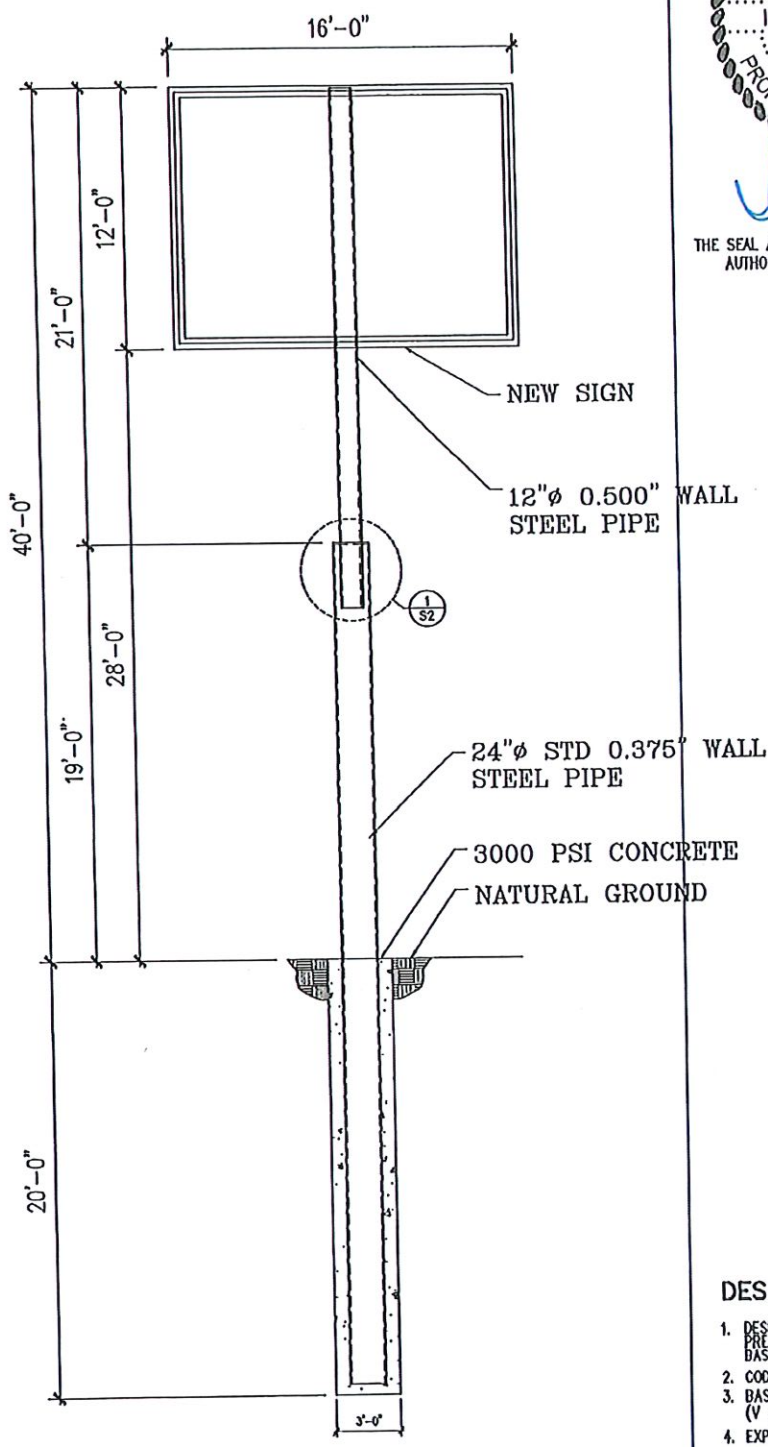


AC-DC Sign Group L.L.C.  
1902-C Joe Stephens Ave  
Weslaco, TX 78599

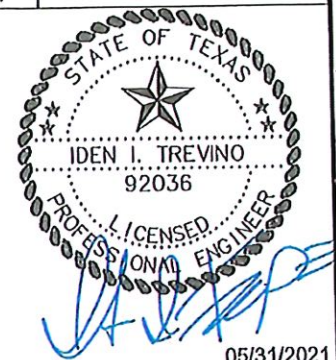
Phone: (956) 973-9000  
(956) 322-3081  
Fax: (956) 322-3082  
design@acdcsigngroup.com

State  
Licence  
No. 18036





#	DATE	REVISION
1	05/31/2021	SIGN SIZE



05/31/2021  
 THE SEAL APPEARING ON THIS DOCUMENT WAS AUTHORIZED BY, IDEN I. TREVINO P.E.

DATE: 02/04/2021  
 SCALE: 1/8" = 1'-0"  
 SHEET S1 OF 2

THE SEAL APPEARING ON THIS DOCUMENT WAS AUTHORIZED BY IDEN I. TREVINO PE 92036. ALTERATION OF A SEALED DOCUMENT WITHOUT PROPER NOTIFICATION TO THE RESPONSIBLE ENGINEER IS AN OFFENSE UNDER THE TEXAS ENGINEERING PRACTICE ACT.

**TREVIÑO ENGINEERING**  
 FIRM No. F-7906

200 S. 10th St., Ste. 1303  
 McALLEN, TEXAS 78501

TEL. No. (956) 283-8847  
 iden@trevinoengineering.com

**DESIGN CRITERIA**

- DESIGN LOADS, STRUCTURAL ANALYSIS AND PREPARATIONS OF STRUCTURAL MEMBERS IS BASED UPON THE FOLLOWING CRITERIA:
- CODE: IBC 2012, ASCE7-10
- BASIC WIND SPEED (V<sub>3s</sub> - 3 SECOND GUST): 130 MPH
- EXPOSURE CATEGORY C
- IMPORTANCE FACTOR 0.77
- BUILDING CATEGORY I

**NEW SIGN FOR  
 LINN SAN MANUEL VETERANS PARK  
 SAN MANUEL,  
 TEXAS**

# DATE  
1 05/31/2021

REVISION  
S221 SIZE

DATE:  
02/04/2021

SCALE:  
NTS

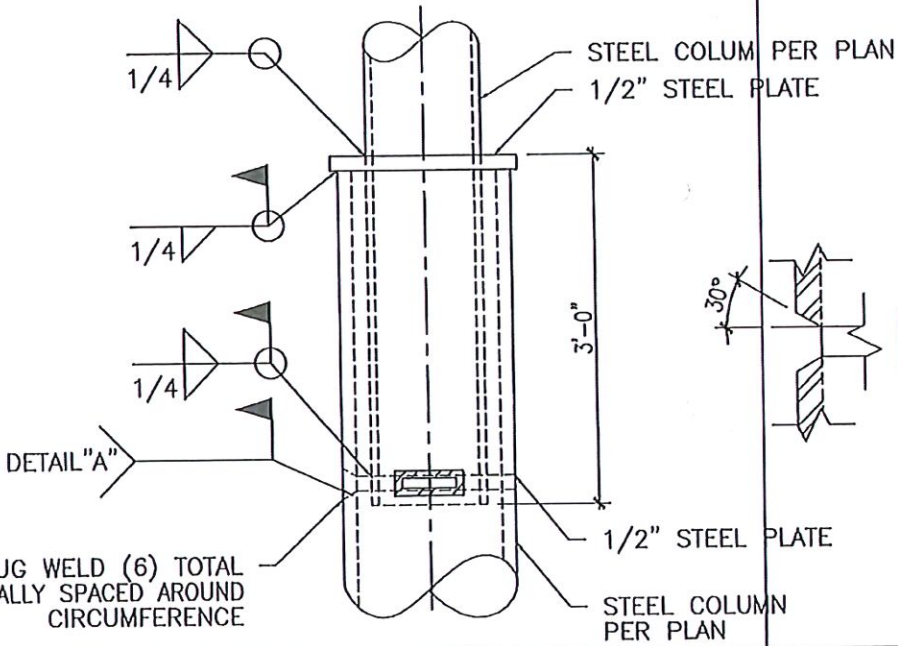
SHEET S2  
OF 2



05/31/2021

THE SEAL APPEARING ON THIS DOCUMENT WAS AUTHORIZED BY, IDEN I. TREVIÑO P.E.

THE SEAL APPEARING ON THIS DOCUMENT WAS AUTHORIZED BY IDEN I. TREVIÑO PE 92036. ALTERATION OF A SEALED DOCUMENT WITHOUT PROPER NOTIFICATION TO THE RESPONSIBLE ENGINEER IS AN OFFENSE UNDER THE TEXAS ENGINEERING PRACTICE ACT.



TREVIÑO ENGINEERING  
FIRM No. F-7906

200 S. 10th St., Ste. 1303  
McALLEN, TEXAS 78501

TEL No. (956) 283-8847  
ident@trevinoengineering.com



NEW SIGN FOR  
LINN SAN MANUEL VETERANS PARK  
SAN MANUEL,  
TEXAS

STEEL COLUMN TO STEEL COLUMN

1