

MINUTES

COMMUNITY SERVICES COMMISSION OF THE CITY OF LA HABRA

Wednesday, January 8, 2020

FINAL: These Minutes were approved at the February 12, 2020 Commission meeting.

The Community Services Commission of the City of La Habra met at La Habra City Council Chambers at 100 E. La Habra Boulevard, La Habra on Wednesday, January 8, 2020 at 6:30 P.M.

COMMISSIONERS PRESENT: Garcia, Kempker, Laveaga, Schmidt, Surich and Trujillo (late)

OTHER OFFICIALS PRESENT: Kelly Fujio, Community Services Director
Kimberly Albarian, Community Services Manager, Miranda Cole-Corona, Housing & Economic Development Manager and Susan Louie, Housing Specialist

INVOCATION Chair Carrie Surich

PLEDGE OF ALLEGIANCE: Commissioner Garcia

I. PUBLIC COMMENTS: Lars Pearce with the Rancho La Habra project made a presentation on a proposal for the Westridge Golf Course property. He provided rendering designs and handouts.

II. CONSENT CALENDAR

MOVED by Commissioner Laveaga, seconded by Commissioner Kempker, and CARRIED 5-0, TO APPROVE THE COMMUNITY SERVICES COMMISSION MINUTES OF DECEMBER 11, 2019.

III. CONSIDERATION ITEMS

A. COMMUNITY DEVELOPMENT BLOCK GRANT (CDBG) PROGRAM

The Commission presentations from the following applicants for CDBG funding for FY 2020-2021.

1. Community Care Resource Center – Don Hannah, Vice President/Secretary
2. Fair Housing – Stella Verdeja, Executive Director
3. Mercy House – John Paul Bryan, Development Associate
4. Employment & Training – Al Rodriguez, E&T Manager
5. Community Services Program – Community Services Staff
6. Administration and Housing – Community Development Staff
7. Public Works Projects – Community Development Staff

The total request for funding is \$ 1,803.585 and CDBG funding available is \$ 1,115.585. The CDBG subcommittee will meet before the February Commission meeting and will make a recommendation for approval at that meeting.

B. CHILD DEVELOPMENT

The Commission reviewed the Monthly Status Report, the Early Head Start Cost Reimbursement Report, the Monthly Program Report and the CACFP Report.

MOVED by Commissioner Schmidt, seconded by Commissioner Garcia, and carried 5-0 to APPROVE THE CHILD DEVELOPMENT MANAGER'S MONTHLY STATUS REPORT, THE HEAD START COST REIMBURSEMENT REPORT, THE MONTHLY PROGRAM REPORT AND THE CACFP REPORT.

MOVED by Commissioner Kempker, seconded by Commissioner Laveaga and carried 5-0 to APPROVE THE COMMUNITY ASSESSMENT 2019 – 2024, YEAR 2 UPDATE.

MOVED by Commissioner Garcia, seconded by Commissioner Laveaga, and carried 5-0 to APPROVE THE PERIOD 1 INTERNAL MONITORING CORRECTIVE ACTION PLAN.

C. SPECIAL EVENTS

The Commission reviewed the Holiday Wishes Program. City staff already meet with Northgate to discuss the possibility of partnering together next year. There would be one community celebration for all participating families.

Upcoming Events:

- State of the City – February 21
- La Habra Races – March 14
- Miss La Habra – March 21

D. YOUTH COMMITTEE

The Youth Committee volunteered at the Holiday Wishes program and had a holiday party. The Lions Essay Contest is being promoted to all youth in the school district.

IV. **ADMINISTRATIVE MATTERS:**

V. **DISCUSSION ANY COMMISSISONER MAY WISH TO PRESENT:**

The iPads won't be available until this Spring. The City Clerk's office is implementing a new system for agendas, reports and minutes. Staff won't be trained until late April.

VI. **ADJOURNMENT:**

On a motion by Commissioner Trujillo, seconded by Commissioner Kempker, the Commission adjourned the meeting at 8:10 P.M. to Wednesday, February 12, 2020 at 6:30 P.M. The Commission meeting will be held at La Habra City Council Chambers, 100 E. La Habra Blvd., La Habra, California.

Respectfully submitted,



Kimberly Albarian, Secretary

APPROVAL: This is to certify that these Minutes were approved by the La Habra City Council on _____.

Laurie Swindell, City Clerk

**CITY OF LA HABRA
EARLY HEAD START PROGRAM
MONTHLY REPORT
2019-20 FISCAL SCHOOL YEAR**

For Consideration for meeting dated January 8, 2020

Program Information Summary (PIS) Report: November 2019 (Attachment 1)

Section A: Agency Profile

Item	Previous Month Report	Current Month Report
Funded Enrollment	50	50
Number Enrolled (Cumulative)		
Number of Children	54	55
Number of Pregnant Moms	1	1
Number in the Waiting list	5	4
Enrollment by Eligibility		
Below 100% Poverty Line	30	31
Categorically Eligible	14	15
Over-Income	10	10

Section B: Staff and Qualifications

Item	Supervisor	Home Base Educator
Total Number of Child Development Staff by Position	1	5
With a BA Degree	1	2
With an AA Degree	0	2
Without a Degree, enrolled with a Waiver	0	1

Section C: Child and Family Services

Item	Previous Month Report	Current Month Report
Number of Children/ Pregnant Women with Health Insurance	53	55
Number of Children with an Ongoing Source of Continuous, Accessible Health Care (Medical Home)	53	55
Number of children up-to-date with well-baby checks	36	39
Number of children with expired well-baby checks	14	13

Number of children with expired well-baby checks 30 days or less	9	8
Number of children who are up-to-date with Immunizations	53	54
Number of children with continuous accessible dental care (Dental Home)	53	55
Number of children who are up-to-date with oral health care	50	52
Number of children with expired oral health care	9	11
Number of children with an IFSP	19	20

Family Partnership Agreements

Item	Previous Month Report	Current Month Report
Total Number of FPA's introduced	52	54
Total Number of FPA's completed	30	31
Total Number of FPA's with an established goal	30	31
Home based services (Month) Visits Completed	185	147
Home based services (year to date) Visits Completed	733	869
Number of Socializations (Month)	33	6
Number of Socializations (year to date)	100	105

Monitoring Report:

- Monitoring Report for the Period I (July – December) (Attachment 2)

Financial Reports:

- Attached is the Cost Report for October 2019 and the amount requested is **\$33624.58** (Attachment 3)
 - Total In-kind to-date is **\$46,387.97 (of \$120,283.00)**
- Attached is the Credit Card Reports for November 2019. (Attachment 4)

CACFP Reports:

- The total reimbursement for the month of November 2019 is **\$14,981.94** (Attachment 5)
 - Note: EHS does not have a CACFP program because it is a home-based program option.*
- Attached is the Food Revenue and Expenditures analysis thru November 2019. (Attachment 6)

Information Shared:

- Training: Fiscal Management (**Attachment 7**)
- Program Instruction: Administrative Simplification for Consolidating Head Start Grants (**Attachment 8**)
- Federal Register Alert: Agency Information Collection Activities: Proposed Collection; Comment Request – Information Collection for the Child and Adult Care Food Program (**Attachment 9**)

Action Items, For Approval:

- Community Assessment 2019-2024, year 2 update (**Attachment 10**)
- Period I Internal Monitoring Corrective Action Plan (**Attachment 11**)

Monthly Program Information Summary Data Collection Worksheet

Delegate La Habra: Early Head Start

* Use ChildPlus Report (9700) and audit reports where noted

Report due on or before the 5th of each month

2019		2020									
Jul	Aug	Sep	Oct	Nov	Dec	Jan	Feb	Mar	Apr	May	Jun
8/6	9/4	10/4	11/5	12/3							

ATTACHMENT 1

A. ENROLLMENT & PROGRAM OPTIONS

1. Enrollment Year

a. Start Date	7/1	7/1	7/1	7/1	7/1						
b. End Date	6/30	6/30	6/30	6/30	6/30						

FUNDED ENROLLMENT

2. Funded Head Start or Early Head Start Enrollment

a. Head Start/Early Head Start Funded Enrollment, as identified on NOA	50	50	50	50	50						
--	----	----	----	----	----	--	--	--	--	--	--

3. Center-based option - 5 days per week

a. Full-day enrollment

1. Of these, the number available as full-working-day enrollment

a. Of these, the number available for the full-calendar-year

b. Part-day enrollment

1. Of these, the number in double sessions

4. Center-based option - 4 days per week

a. Full-day enrollment

b. Part-day enrollment

1. Of these, the number in double sessions

5. Home-based option

6. Combination option

7. Family child care option

a. Of these, the number available as full-working-day enrollment

1. Of these, the number available for the full-calendar-year

8. Locally Designed Option

CLASSES AND GROUPS

12. Total number of classes operated

a. Of these, the number of double session classes

CUMULATIVE ENROLLMENT

13. Cumulative enrollment by child age (9700/9702):

a. Under 1 year

b. 1 year old

c. 2 years old

AutoSum	49	49	50	53	55						
	11	11	12	14	16						
	16	16	16	16	16						
	22	22	22	23	23						

Monthly Program Information Summary Data Collection Worksheet

Delegate La Habra: Early Head Start

* Use ChildPlus Report (9700) and audit reports where noted

Report due on or before the 5th of each month

- d. 3 years old
- e. 4 years old
- f. 5 years and older

14. Total cumulative enrollment of pregnant women (EHS programs) (9700/9740)

CUMULATIVE ENROLLMENT BY TYPE OF ELIGIBILITY

16. Cumulative enrollment by eligibility (9700/9702):

- a. Income below 100% of federal poverty line
- b. Receipt of public assistance such as TANF, SSI
- c. Status as a foster child - # children only
- d. Status as homeless
- e. Over income
- f. Enrollees exceeding the allowed over income enrollment with family incomes between 100% and 130% of the federal poverty guideline

PRIOR ENROLLMENT

18. Enrolled in Head Start or Early Head Start for (9700/9702):

- a. The second year
- b. Three or more years

TURNOVER IN ENROLLMENT (9700/9701)

19. Total number of children who dropped out any time after classes or home visits began and did not re-enroll

- a. The number of children who were in class less than 45 days

TRANSITION AND TURNOVER (EHS programs) (9700/9701)

20. Total number of children who dropped out any time after classes or home visits began and did not re-enroll

- a. The number of children who were enrolled less than 45 days

21. Total number of pregnant women who left the program after receiving early head start services but before the birth of their infant, and did not re-enroll (9700/9741)

Waitlist (2006) / Enrollment (2007) / Average Daily Attendance (Center-based Programs) (2301)

Number of children on Waitlist
 Monthly Enrollment
 Average Daily Attendance

2019						2020					
Jul	Aug	Sep	Oct	Nov	Dec	Jan	Feb	Mar	Apr	May	Jun
8/6	9/4	10/4	11/5	12/3							
0	0	0	0	0	0						

1	1	1	1	1	1						
---	---	---	---	---	---	--	--	--	--	--	--

AutoSum	50	50	51	54	56						
	34	34	29	30	31						
	4	4	4	4	4						
	2	2	2	2	2						
	2	2	7	8	9						
	3	3	4	5	5						
	5	5	5	5	5						

24	24	24	24	24	24						
13	13	13	13	13	13						

			4	5	5						
0	0	0	0	0	0						
0	0	0	0	0	0						

1	3	7	5	4							
50	50	50	50	51							

Monthly Program Information Summary Data Collection Worksheet

Delegate La Habra: Early Head Start

* Use ChildPlus Report (9700) and audit reports where noted

Report due on or before the 5th of each month

2019						2020					
Jul	Aug	Sep	Oct	Nov	Dec	Jan	Feb	Mar	Apr	May	Jun
8/6	9/4	10/4	11/5	12/3							
1	1	1	1	1							

2. Family development credential (FDC)
 3. Child development associate credential (CDA)
 4. State-awarded certification, credential, or license appropriate to the option in which they are working, i.e. home-based option or family child care option
 5. Other
- e. Of the child development staff by position, the number who do not have the qualifications listed in B.9.a through B.9.d

- Of those in B.9.e, the number enrolled in:**
1. An advanced degree or license
 2. A baccalaureate degree
 3. An associate degree
 4. Studies leading to a non-degree license, certificate, or credential

C. Child & Family Services

Health Insurance - children (9700/9706)

1. Number of all children with health insurance

49	49	49	53	55							
----	----	----	----	----	--	--	--	--	--	--	--

Health Insurance - pregnant women (EHS programs) (9700/9716)

3. Number of pregnant women with at least one type of health insurance.

1	1	1	1	1							
---	---	---	---	---	--	--	--	--	--	--	--

Medical home - children (9700/9707)

5. Number of children with an ongoing source of continuous, accessible health care

49	49	49	53	55							
----	----	----	----	----	--	--	--	--	--	--	--

Physical Exams / Well Checks (3035)

	AutoSum	48	49	50	53	55					
Non-Expired Physical Exams / Well-Checks		28	36	39	36	39					
Expired Physical Exams / Well-Checks		18	12	10	14	13					
Missing Physical Exams / Well-Checks		2	1	1	3	3					
Physical Exams / Well-Checks expired 30 days or less		9	6	5	9	8					

Medical services - children (9707)

8. Number of all children who are up-to-date on a schedule of age-appropriate preventive and primary health care, according to the relevant state's EPSDT schedule for well child care

0	0	0	0	0	0						
---	---	---	---	---	---	--	--	--	--	--	--

a. Of these, the number diagnosed by a health care professional with a chronic condition needing medical treatment since last year's PIR was reported

1. Of these, the number who have received or are receiving medical treatment

0	0	0	0	0	0						
---	---	---	---	---	---	--	--	--	--	--	--

Body Mass Index (BMI) - children (HS and Migrant programs) (9700/9760)

1. Of these, the number who have received or are receiving medical treatment

0	0	0	0	0	0						
---	---	---	---	---	---	--	--	--	--	--	--

Monthly Program Information Summary Data Collection Worksheet

Delegate La Habra: Early Head Start

* Use ChildPlus Report (9700) and audit reports where noted

Report due on or before the 5th of each month

2019						2020					
Jul	Aug	Sep	Oct	Nov	Dec	Jan	Feb	Mar	Apr	May	Jun
8/6	9/4	10/4	11/5	12/3							

10. Number of children who are in the following weight categories according to the 2000 CDC BMI-for-age growth charts

- a. Underweight (BMI less than 5th percentile for child's age and sex)
- b. Healthy weight (at or above 5th percentile and below 85th percentile for child's age and sex)
- c. Overweight (BMI at or above 85th percentile and below 95th percentile for child's age and sex)
- d. Obese (BMI at or above 95th percentile for child's age and sex)

Immunization services - children (9700/9708/9760)

- 11. Number of children who have been determined by a health care professional to be up-to-date on all immunizations appropriate for their age
- 12. Number of children who have been determined by a health care professional to have received all immunizations possible at this time, but who have not received all immunizations appropriate for their age
- 13. Number of children who meet their state's guidelines for an exemption from immunizations

AutoSum	49	49	50	53	54						
	24	26	28	28	29						
	25	23	22	25	25						
	0	0	0	0	0						

Dental home - children (9700/9708)

17. Number of children with continuous, accessible dental care provided by a dentist

49	49	49	53	55							
----	----	----	----	----	--	--	--	--	--	--	--

Professional Dental Exams (3035) (HS Programs)

- Non-Expired Professional Dental Exams
- Expired Professional Dental Exams
- Missing Professional Dental Exams
- Professional Dental Exams expired 30 days or less

19. Number of all children, including those enrolled in Medicaid or CHIP, who have completed a professional dental examination since last year's PIR was reported (9700/9708)

- a. Of these, the number of children diagnosed as needing treatment since last year's PIR was reported
 - 1. Of these, the number of children who have received or are receiving treatment

Primary Oral Health (3035) (EHS programs)

- Number of children with oral health screens (EHS only)
- Number of children with dental exams (EHS only)

Primary Oral Health (3035) (EHS programs)

- Non-Expired age-appropriate primary oral health care
- Expired age-appropriate primary oral health care
- Missing age-appropriate primary oral health care
- Age-appropriate primary oral health care expired 30 days or less

AutoSum	15	48	49	50	52						
	3	5	5	5	16						
	49	49	50	53	55						
	29	36	42	41	41						
	17	12	7	9	11						
	3	1	1	3	3						
	9	5	3	5	6						

Monthly Program Information Summary Data Collection Worksheet

Delegate La Habra: Early Head Start

* Use ChildPlus Report (9700) and audit reports where noted

Report due on or before the 5th of each month

2019												2020				
Jul	Aug	Sep	Oct	Nov	Dec	Jan	Feb	Mar	Apr	May	Jun					
8/6	9/4	10/4	11/5	12/3												

Pregnant women dental services (EHS programs) (9700/9740)

21. Of the number of pregnant women served, the number who received a professional dental examination(s) and/or treatment since last year's PIR was reported

0	0	0	0	0	0											
---	---	---	---	---	---	--	--	--	--	--	--	--	--	--	--	--

IEP/IFSP (3501)

Open IEP/IFSP for the reporting month

14	14	14	17	19	20											
----	----	----	----	----	----	--	--	--	--	--	--	--	--	--	--	--

27. Diagnosed primary disability (HS Programs) (9700/9710):

- a. Health impairment (i.e. meeting IDEA definition of "other health impairment")
- b. Emotional/behavioral disorder
- c. Speech or language impairments
- d. Intellectual disabilities
- e. Hearing impairment, including deafness
- f. Orthopedic impairment
- g. Visual Impairment, including blindness
- h. Learning disabilities
- i. Autism
- j. Traumatic brain injury
- k. Non-categorical/developmental delay
- l. Multiple disabilities
- m. Deaf-blind

--	--	--	--	--	--	--	--	--	--	--	--	--	--	--	--	--

Newly enrolled children with Vision screenings completed (3001)

- On Time (45 days)
- Late
- None Completed

4	6	6	7	10												
0	0	0	1	3												
8	6	7	8	5												
12	12	13	16	18												

Newly enrolled children with Hearing screenings completed (3001)

- On Time (45 days)
- Late
- None Completed

0	3	3	4	7												
0	1	1	2	5												
12	8	9	10	6												
12	12	13	16	18												

Newly enrolled children with Developmental screenings completed (3001)

- On Time (45 days)

1	12	12	16	17												
---	----	----	----	----	--	--	--	--	--	--	--	--	--	--	--	--

Monthly Program Information Summary Data Collection Worksheet

Delegate La Habra: Early Head Start

* Use ChildPlus Report (9700) and audit reports where noted

Report due on or before the 5th of each month

2019												2020										
Jul	Aug	Sep	Oct	Nov	Dec	Jan	Feb	Mar	Apr	May	Jun	Jul	Aug	Sep	Oct	Nov	Dec					
8/6	9/4	10/4	11/5	12/3																		
0	0	0	0	0																		
11	0	1	0	1																		
AutoSum												12	12	13	16	18						

- Late
- None Completed

Newly enrolled children with Behavioral screenings completed (3001)

- On Time (45 days)
- Late
- None Completed

1	12	12	12	16	17																
0	0	0	0	0	0																
11	0	1	0	1																	
AutoSum												12	12	13	16	18					

Screening (9700/9709)

28. Number of all newly enrolled children since last year's PIR was reported

29. Number of all newly enrolled children who completed routine screenings for developmental, sensory, and behavioral concerns

12	12	13	16	18													
0	10	11	12	14													

Number of families (9700/9730/9731)

35. Total number of families

51. Of these, the number that received at least one of the services listed above

46	46	47	50	50													
1	3	9	9	13													

Homelessness Services (9700/9705/9731)

53. Total number of families experiencing homelessness that were served during the enrollment year

54. Total number of children experiencing homelessness that were served during the enrollment year

55. Total number of families experiencing homelessness that acquired housing during the enrollment year

3	3	7	8	8													
3	3	7	8	9													
0	0	0	0	0													

Family Partnership Agreements (Agency Preference)

FPA Introduced

FPA Completed

FPA with established goal

46	46	46	52	54													
0	0	0	30	31													
0	0	0	30	31													

Home Base Services by MONTH (Agency Preference)-HOME VISIT Benchmarks

Based on funded enrollment, the expected number of Home Visits

Based on actual enrollment, the expected number of Home Visits

200	200	200	200	200	150												
198	200	200	200	146													

Home Base Services by MONTH (Agency Preference)-HOME VISIT Services

Number of Home Visits Completed

Number of Home Visit Parent Cancellations

Number of Home Visit Program Cancellations (required to be made up)

AutoSum												198	205	207	210	162						
Current Month												178	185	177	185	147						
Current Month												16	15	22	20	15						
Current Month												4	5	8	5	0						

Monthly Program Information Summary Data Collection Worksheet

Delegate La Habra: Early Head Start

* Use ChildPlus Report (9700) and audit reports where noted

Report due on or before the 5th of each month

2019												2020					
Jul	Aug	Sep	Oct	Nov	Dec	Jan	Feb	Mar	Apr	May	Jun						
8/6	9/4	10/4	11/5	12/3													

Home Base Services by MONTH (Agency Preference)-SOCIALIZATION Benchmarks

Based on funded enrollment, the expected number of Socializations

100	100	100	100	100	50						
100	100	100	100	49							

Based on actual enrollment, the expected number of Socializations

27	15	24	33	6							
----	----	----	----	---	--	--	--	--	--	--	--

Number of Socializations Attended

Home Base Services by YEAR-TO-DATE (Agency Preference)-HOME VISIT Benchmarks

Based on funded enrollment, the expected number of Home Visits

200	400	600	800	950						
198	398	598	798	944						

Based on actual enrollment, the expected number of Home Visits

198	395	604	807	954						
-----	-----	-----	-----	-----	--	--	--	--	--	--

Number of Home Visits Completed

Year-To-Date

Number of Home Visit Parent Cancellations

Year-To-Date

Number of Home Visit Program Cancellations (required to be made up)

Year-To-Date

4	6	10	9	5						
---	---	----	---	---	--	--	--	--	--	--

Home Base Services by YEAR-TO-DATE (Agency Preference)-SOCIALIZATION Benchmarks

Based on funded enrollment, the expected number of Socializations

100	200	300	400	450						
100	200	300	400	449						

Based on actual enrollment, the expected number of Socializations

27	42	66	99	105						
----	----	----	----	-----	--	--	--	--	--	--

Number of Socializations Attended

Year-To-Date

**INTERNAL MONITORING REPORT: PERIOD I (JULY –
DECEMBER)**

Planning

- ✓ Service Area Plans, Policies, and Procedures (SAPPS) for 2019-20 is still being updated and will be presented for approval.
- ✓ Staff training occurred in August 16; topics at the training were community updates, mental health, use of social media, and child development policies and procedures.
- ✓ Staff attended the Parent, Family, and Community Engagement at OCHS wherein updates to the process was discussed.
 - OCHS staff conducted follow-up visit and provided the forms needed to complete the FPA process.
- ✓ The Family Partnership Agreement (FPA) was introduced to the parents. FSA began working on the 1st FPA assessment with the families.
- ✓ Teaching staff began the first DRDP (2015) assessment by completing observations for the children.
 - Learning Genie data system for the children's assessment was updated to ensure all children are accounted for with an assessment.
 - Weekly report was reviewed for completeness.
 - Children's first assessment was reviewed and analyzed. First assessment report was presented for approval.
- ✓ UCI EyeMobile came to the Main office to conduct follow-up eye exams for the children on October 22, 2019.
- ✓ ChildPlus Data System was also updated and staff needed to update passwords since security was updated.
- ✓ Staff was provided the HOVERS training. This will assist in completing the monitoring of home-visits which can be discussed with the Home-Educator.
 - Side-by-Side observation will be conducted in January.

Communication

Meetings Scheduled/Attended:

- ✓ Socialization activity for Early Head Start occurred on each month.
 - Parents are continuously being encouraged to come and participate in the socialization activities.
 - Social included a Music and Movement from the La Habra City School District.
 - Family Resource Center came and provided parents information on the services they provide.
 - Bank of California presented to the parents regarding financial management.
 - NAMI are presented to the parents regarding promoting positive mental health for children.

City of La Habra **Child Development Division**

- Healthy Smiles provided training to the parents regarding dental care and conducted dental screenings for the children.
- ✓ PC and Commission meeting occurred as planned - monthly information reports were provided and discussed.

Record-Keeping and Reporting:

- ✓ Ran ChildPlus reports to complete the Program Information Summary and was submitted to OCHS. There are no concerns with the data analyzed.
- ✓ Lesson plans were reviewed for each child that was completed by the home-educators.
- ✓ Rate of completion record was completed for the EHS home-educators

Ongoing Monitoring:

- ✓ Governance screener was completed and a Corrective Action Plan was completed.
 - The items have been corrected.
- ✓ Child files were reviewed for the 45-days and 90-days timelines.
 - Safety Checklist for each home.
 - Pedestrian Safety Training
 - Developmental Screening (ASQ-3)
 - Behavioral Screening (ASQ:SE)
 - Some children needed to be re-screened in the ASQ-3 and/or ASQ:SE Follow-up and referrals were generated.
 - Individual Development Plan (1 was not completed)
 - Referrals were generated where needed.
- ✓ OCHS staff came to review enrollment files with staff to ensure the program is completing the applications and following the process required by OCHS. Where there were questions regarding a family file, these were discussed and concerns were resolved.
 - OCHS reminded staff to verify information on ChildPlus matches the information on file.
- ✓ Technical Assistance were requested from OCHS in the areas of ChildPlus updates, Health, Education. These are scheduled for the month of November.
- ✓ Ran reports of children who were turning 2.6 and determined if a transition plan was started for these children.
- ✓ Home-Visit observation was conducted and no findings were identified.
- ✓ Human Resources Tracking sheet was completed and sent to OCHS.
 - Some of the Home-Educator's Professional Development Plan is over 12 months; there was no follow-up.
 - Standards Precaution training is over 12 months.
- ✓ OCHS came in the month of October to begin period I monitoring.

Enrollment:

- ✓ EHS is fully enrolled with 50 children.
- ✓ EHS currently has 4 children on a waiting list.

Early Head Start Basic Budget

Major Cost Category	Approved Budget Amount	Cost This Period Amount	Cost to Date Amount Total	Budget Amount Remaining
PERSONNEL	314,295.00	24,130.11	122,030.03	192,264.97
FRINGE BENEFITS	112,426.00	7,146.40	43,554.76	68,871.24
TRAVEL	0.00	0.00	0.00	0.00
EQUIPMENT *	0.00	0.00	0.00	0.00
SUPPLIES	12,233.00	362.05	2,663.60	9,569.40
CONTRACTUAL	10,071.00	325.00	1,831.50	8,239.50
CONSTRUCTION	0.00	0.00	0.00	0.00
OTHER COSTS	20,857.00	1,569.01	8,448.58	12,408.42
INDIRECT COSTS	0.00	0.00	0.00	0.00
TOTAL	\$469,882.00	\$33,532.57	\$178,528.47	\$291,353.53

Early Head Start T&TA

Major Cost Category	Approved Budget Amount	Cost This Period Amount	Cost to Date Amount Total	Budget Amount Remaining
PERSONNEL	0.00	0.00	0.00	0.00
FRINGE BENEFITS	0.00	0.00	0.00	0.00
TRAVEL	9,400.00	0.00	0.00	9,400.00
EQUIPMENT *	0.00	0.00	0.00	0.00
SUPPLIES	0.00	0.00	0.00	0.00
CONTRACTUAL	0.00	0.00	0.00	0.00
CONSTRUCTION	0.00	0.00	0.00	0.00
OTHER COSTS	1,850.00	92.01	1,251.36	598.64
INDIRECT COSTS	0.00	0.00	0.00	0.00
Total	\$11,250.00	\$92.01	\$1,251.36	\$9,998.64

Non-Federal Share (In-Kind)

	Approved Budget Amount	Cost This Period Amount	Cost to Date Amount Total	Budget Amount Remaining
EHS Basic	118,481.26	1,350.00	46,387.97	72,093.29
EHS T&TA	1,801.74	0.00	0.00	1,801.74
Total	\$120,283.00	\$1,350.00	\$46,387.97	\$73,895.03
Reimbursement Request Total		\$33,624.58		

**City of La Habra
Child Development Division**

ATTACHMENT 4

Credit Card Expenses

Month Reporting: November, 2019

Charge By	Date Charged	Item/ Purpose	Amount
Smart & Final (Non-Food Program)	11/18/2019	CSPP Whittier - Cooking Experience	\$73.51
	11/21/2019	CSPP - Classroom Suuplies	\$23.76
Smart & Final (Food Program Items)	11/13/2019	CSPP - Kitchen Supplies	\$46.52
	11/21/2019	CSPP - Milk	\$11.95
	11/22/2019	CSPP - Milk Substitute	\$24.89
		Total:	\$180.63

Charge By	Date Charged	Item/ Purpose	Amount
Bank of the West Credit Card (M. Garcia)	11/14/2019	Sam's Club: Socialization and PC	
		Lunch	\$77.67
Bank of the West Credit Card (A. Morales)			
Bank of the West Credit Card (D. Linn)			
Bank of the West Credit Card (A. Marceau)	10/31/2019	CVS Classroom and Kitchen Supplies	\$75.27
		Total:	\$152.94

**Child & Adult Care Food Program
Claim For Reimbursement Summary for November 2019**

04320-CACFP-30-GM-CS
CITY OF LA HABRA-CHILD DEV DIVISION
 110 E LA HABRA BLVD
 LA HABRA, CA 90631-2314
 Vendor #: 21830Z
 payment address

Month/Year Claimed	Adjustment Number	Date Received	Date Accepted	Date Processed	Reason Code
Nov 2019	0	12/10/2019	12/10/2019	12/12/2019	Original

Child Care

	Free	Reduced	Base	Total
Enrollment Totals	97	54	42	193
Eligibility Percentages	50.26%	27.98%	21.76%	100%

Agency Totals	Meals/Snacks	Federal Rate	Reimbursement Amount
Breakfast			
Free	999	1.8400	1,838.16
Reduced	556	1.5400	856.24
Base	433	0.3100	134.23
Total	1,988		2,828.63
AM Snack			
Free	475	0.9400	446.50
Reduced	264	0.4700	124.08
Base	206	0.0800	16.48
Total	945		587.06
Lunch			
Free	896	3.4100	3,055.36
Reduced	499	3.0100	1,501.99
Base	387	0.3200	123.84
CIL	1,782	0.2375	423.23
Total	1,782		5,104.42
PM Snack			
Free	843	0.9400	792.42
Reduced	470	0.4700	220.90
Base	365	0.0800	29.20
Total	1,678		1,042.52

School Age

	Free	Reduced	Base	Total
Enrollment Totals	93	54	29	176
Eligibility Percentages	52.84%	30.68%	16.48%	100%

Agency Totals	Meals/Snacks	Federal Rate	Reimbursement Amount
Breakfast			
Free	1,065	1.8400	1,959.60
Reduced	618	1.5400	951.72
Base	332	0.3100	102.92

	Total	2,015		3,014.24
Lunch				
Free		194	3.4100	661.54
Reduced		113	3.0100	340.13
Base		60	0.3200	19.20
CIL		367	0.2375	87.16
	Total	367		1,108.03
PM Snack				
Free		1,048	0.9400	985.12
Reduced		608	0.4700	285.76
Base		327	0.0800	26.16
	Total	1,983		1,297.04
Claim Reimbursement Total				14,981.94

State Reimbursements

Meal Description	Meals	State Rate	State Earnings
Total Breakfast	3,238	\$0.0000	\$0.00
Total Lunches	1,702	\$0.0000	\$0.00
Total			\$0.00

Agency Claim Reimbursement Totals	Meal Reimbursement	CIL Reimbursement	State Reimbursement	Totals
Current Claim Reimbursement Total	14,471.55	510.39	0.00	14,981.94
Previous Claim Reimbursement Total	0.00	0.00	0.00	0.00
Net Claim Reimbursement Total	14,471.55	510.39	0.00	14,981.94

Created By: catherinev on: 12/10/2019 4:21:35 PM Modified By: catherinev on: 12/10/2019 4:44:13 PM

CITY OF LA HABRA
 CCFP-CENTERS FOOD ALLOCATION
 FOR THE FISCAL YEAR 2019-20

ATTACHMENT 6

FOOD REVENUE vs FOOD EXPENDITURES ANALYSIS

Month	School Age CCTR (38501)			State-Preschool CSPP (38502)			Total		Revenue Over/ (Under) Expenditure Net Amount
	4702 Food Revenue	7114 Food Expense	Net Amount	4702 Food Revenue	7114 Food Expense	Net Amount	4702 Food Revenue	7114 Food Expense	
Jul-19	\$ 16,315.75	\$ 11,982.35	\$ 4,333.40	\$ 6,776.67	\$ 5,543.30	\$ 1,233.37	\$ 23,092.42	\$ 17,525.65	\$ 5,566.77
Aug-19	\$ 10,449.29	\$ 6,228.34	\$ 4,220.95	\$ 9,238.41	\$ 7,664.27	\$ 1,574.14	\$ 19,687.70	\$ 13,892.61	\$ 5,795.09
Sep-19	\$ 5,332.49	\$ 6,043.98	\$ (711.49)	\$ 12,940.09	\$ 8,821.23	\$ 4,118.86	\$ 18,272.58	\$ 14,865.21	\$ 3,407.37
Oct-19	\$ 5,573.67	\$ 4,183.00	\$ 1,390.67	\$ 13,127.22	\$ 12,113.80	\$ 1,013.42	\$ 18,700.89	\$ 16,296.80	\$ 2,404.09
Nov-19	\$ 5,419.31	\$ 4,632.44	\$ 786.87	\$ 9,562.63	\$ 8,065.90	\$ 1,496.73	\$ 14,981.94	\$ 12,698.34	\$ 2,283.60
Total	\$ 43,090.51	\$ 33,070.11	\$ 10,020.40	\$ 51,645.02	\$ 42,208.50	\$ 9,436.52	\$ 94,735.53	\$ 75,278.61	\$ 19,456.92
YTD Cook	\$ -	\$ 10,387.60	\$ (10,387.60)	\$ -	\$ 20,344.08	\$ (20,344.08)	\$ -	\$ 30,731.68	\$ (30,731.68)
Adjusted Total	\$ 43,090.51	\$ 43,457.71	\$ (367.20)	\$ 51,645.02	\$ 62,552.58	\$ (10,907.56)	\$ 94,735.53	\$ 106,010.29	\$ (11,274.76)

% of Food expense

77%

82%

79%


 THE NATIONAL CENTER ON
Program Management
and Fiscal Operations

Head Start A to Z: Fiscal Management

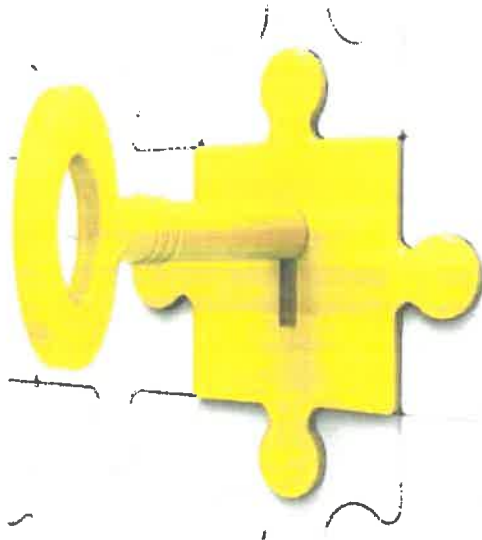


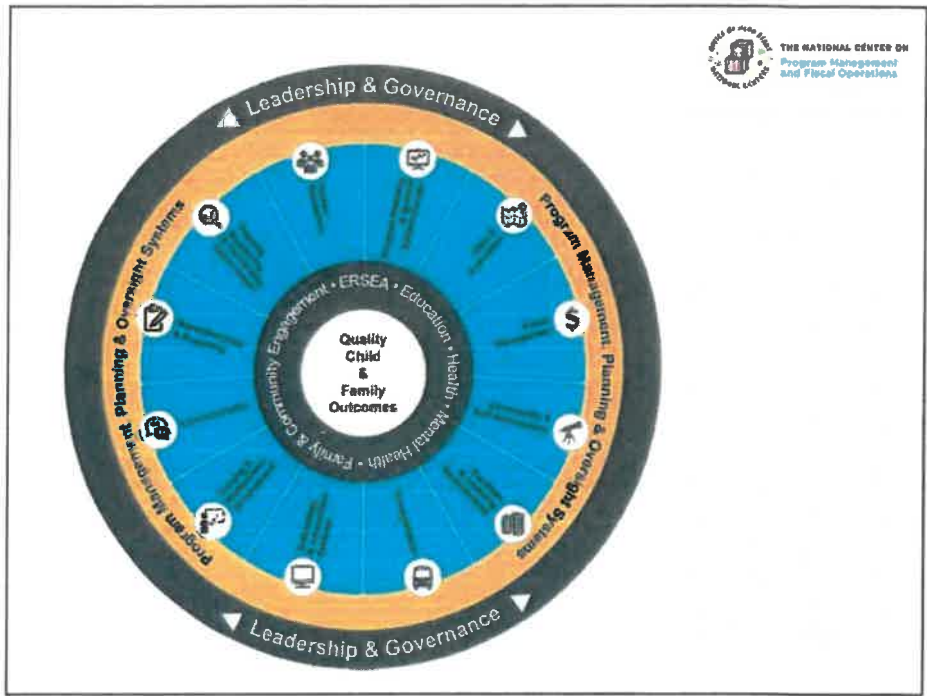
 PMFO

Key Message

 THE NATIONAL CENTER ON
Program Management
and Fiscal Operations

Head Start is a complex and evolving organization, with extensive regulations, policies, values, and traditions.



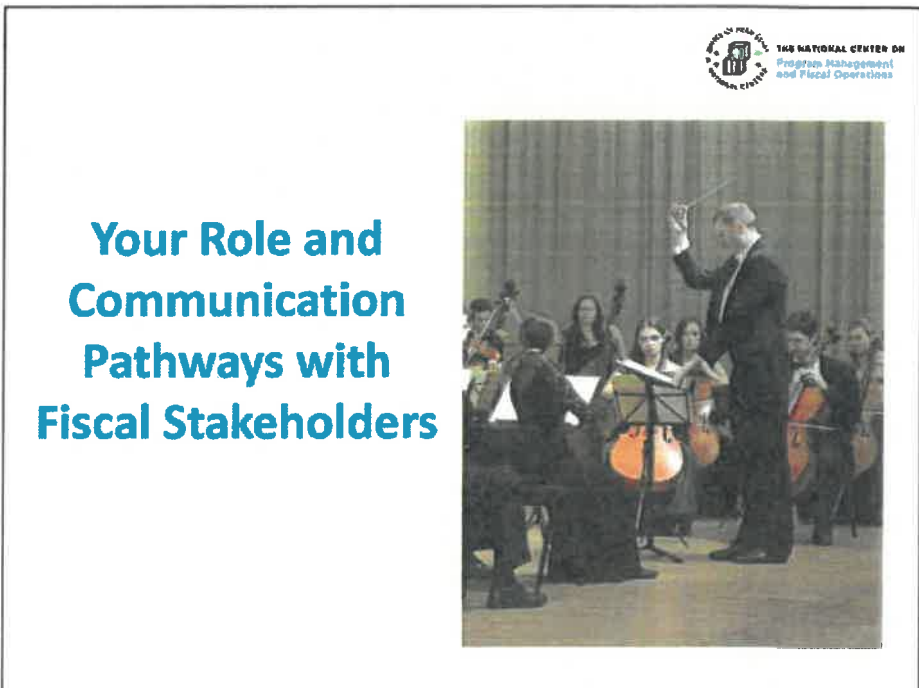
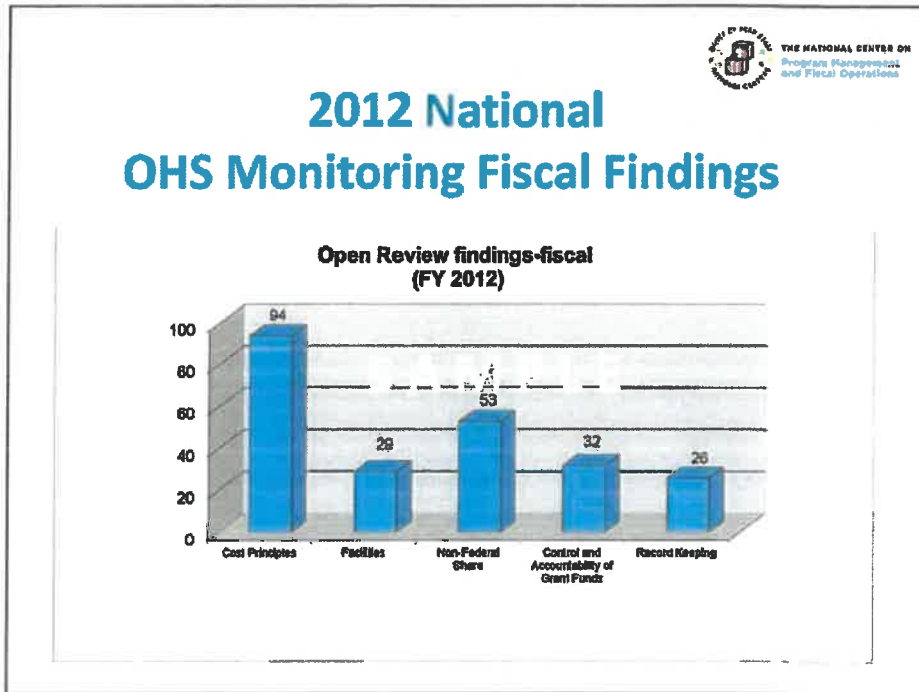




Outcomes

- Identify your role and relationship with important fiscal stakeholders
- Become familiar with federal fiscal regulations impacting Head Start operations
- Learn about key fiscal terms and concepts


The slide titled "Outcomes" contains a bulleted list of three items. In the top right corner is the logo for "THE NATIONAL CENTER ON Program Management and Fiscal Operations". At the bottom left is the "PMFS" logo, which consists of the letters "PMFS" in a stylized font with vertical bars on either side, positioned above a solid blue horizontal line that spans the width of the slide.





Head Start Leader & Fiscal Management


What you need to <i>know</i>	What you need to <i>do</i>	What you need to <i>oversee</i>
<div style="background-color: #0070C0; color: white; padding: 5px; text-align: center; margin-bottom: 5px;">Fiscal regulations</div> <div style="background-color: #0070C0; color: white; padding: 5px; text-align: center; margin-bottom: 5px;">Fiscal concepts</div> <div style="background-color: #0070C0; color: white; padding: 5px; text-align: center;">Fiscal P&Ps</div>	<div style="background-color: #0070C0; color: white; padding: 5px; text-align: center; margin-bottom: 5px;">Collaborate with fiscal staff</div> <div style="background-color: #0070C0; color: white; padding: 5px; text-align: center; margin-bottom: 5px;">Bridge between fiscal/program</div> <div style="background-color: #0070C0; color: white; padding: 5px; text-align: center; margin-bottom: 5px;">Monitor and evaluate fiscal systems</div> <div style="background-color: #0070C0; color: white; padding: 5px; text-align: center;">Promote communication & transparency</div>	<div style="background-color: #0070C0; color: white; padding: 5px; text-align: center; margin-bottom: 5px;">Budget Development and Monitoring</div> <div style="background-color: #0070C0; color: white; padding: 5px; text-align: center; margin-bottom: 5px;">Compensation</div> <div style="background-color: #0070C0; color: white; padding: 5px; text-align: center; margin-bottom: 5px;">Property Management</div> <div style="background-color: #0070C0; color: white; padding: 5px; text-align: center;">Financial Reporting</div>



What you need to *know*


Fiscal Regulations	Fiscal Concepts	Fiscal P&Ps
<ul style="list-style-type: none"> • Head Start Act Sect. 642: Fiscal Reporting • Grants Admin: 45 CFR 1301 • Uniform Admin. Regs: 45 CFR 74 & 92* • Cost Principles: 2 CFR 220, 225, 230* 	<ul style="list-style-type: none"> • Reasonable, allowable & allocable • Internal controls & segregation of duties • Non-Federal share • Cash management • Maintaining records • Understanding your own audit • Administrative cost limitations 	<ul style="list-style-type: none"> • Your organization's fiscal policies and procedures

*These regs will be replaced with 2 CFR Chapter I, II, & Part 200 -- the OMB "Super-Circular" after 12-26-2014



What you need to oversee

Budget Development and Monitoring	Compensation	Property Management	Financial Reporting
<ul style="list-style-type: none"> Restrictions/allowances Grant Application Budget Instrument (GABI) Cost Allocation Notice of Award 	<ul style="list-style-type: none"> Executive compensation Wage comparability Personnel activity reports 	<ul style="list-style-type: none"> Facilities activities Inventory 	<ul style="list-style-type: none"> Internal reporting External reporting



Budget Development and Monitoring *Digging a Little Deeper*

Your Role: Budget champion

Your Budget: Reflection of program goals and priorities

Your Tools: Regional Office Communiqués, Grant Application Budget Instrument (GABI), Cost Allocation, HHS Grants Policy Statement



Your Funding: Federal share, non-federal share, other revenue

Your Expenses: Understanding line items & allowable/unallowable



- Documenting the Match: All contributions:**
- ✓ Must benefit the program and be allowable under the cost principles
 - ✓ Must be verifiable from the grantee's records, including the source and application of cash match, services received, and donations of supplies and equipment
 - ✓ Of volunteer time, must include the establishment of a wage scale based upon the grantee agency's internal scale or prevailing wages in the area and be documented via time sheets
 - ✓ Of supplies and/or equipment, should include a copy of a receipt issued to the donor with a description of the item, an estimate of the current fair-market value, the date received, and signatures of the donor and the recipient
 - ✓ Of cash, are only recognized as a match when the funds are expended on allowable purchases

Fiscal Reporting





Internal

- Monthly Budget to Actual
- Credit Card Statements
- Annual Audit

External

- Financial Status (SF-425)
- Cash Reconciliation (PMS)
- Annual Audit & IRS 990
- Payroll Taxes
- U.S. Department of Agriculture (USDA) Child and Adult Care Food Program (CACFP)

Other Fiscal-related Reports



Internal

- Enrollment & Attendance
- Meals and Snacks

External

- Monthly Enrollment
- Annual Community Report
- Unemployment
- Worker's Compensation



ATTACHMENT 8

Go to ECLKC

[View the web version](#)

U.S. Department of Health & Human Services & Administration for Children & Families

OFFICE OF HEAD START

<p>ACF Administration for Children and Families</p>	<p>U.S. DEPARTMENT OF HEALTH AND HUMAN SERVICES</p>	
	<p>1. Log No. ACF-PI-HS-19-02</p>	<p>2. Issuance Date: 12/19/2019</p>
	<p>3. Originating Office: Office of Head Start</p>	
	<p>4. Key Words: Administrative Simplification; Consolidating Grants; Combining Grants</p>	

PROGRAM INSTRUCTION

SUBJECT: Administrative Simplification for Consolidating Head Start Grants

INSTRUCTION:

This Program Instruction (PI) informs grantees of the opportunity to request to consolidate multiple Head Start grants awarded to a grantee. The PI also describes benefits and risks to consider, and outlines the process grantees must follow to submit a request. This opportunity to streamline and remove some of the administrative burdens of managing multiple grants builds on [ACF-IM-HS-19-04 Accounting Simplification for Head Start and Early Head Start Operations and Service Funds](#).

The Office of Head Start (OHS) recognizes a number of grantees with multiple grants are interested in administering one consolidated Head Start or Early Head Start program under one grant or, at a minimum, fewer grants.

Background

Prior to the implementation of the Designation Renewal System (DRS), only a handful of grantees had more than one grant. Since DRS went into effect, nearly 25 percent of all grantees are managing multiple grants.

Currently, when an existing grantee is awarded new funding through competition or a new noncompetitive award, the grantee receives a new grant with a unique grant award number and project period for up to five years. Each award has a distinct budget cycle, annual funding amount, funded enrollment level, and designated service area.

Multiple Grant Considerations

Grantees managing multiple grants must submit annual applications for each. Because many grants are not on the same refunding schedule, grantees are required to submit applications multiple times per year. All applications submitted by a grantee during the same fiscal year are discrete and must include information for each grant application. This may include the community assessment, program plans and goals, and budget narrative and justification that supports the program design and options of each grant. Planning and allocating costs across multiple grants with different budget and project periods, and often not aligned with the agency's fiscal year can be challenging.

In addition to annual applications for each grant, grantees are required to submit multiple reports periodically, such as financial reports, monthly enrollment reports, and annual Program Information Reports (PIRs). Grantees are also required to maintain data, including centers and contact information, in discrete places for each grant. Each grant is subject to individual requests for particular types of grant actions when needed, such as changes in scope, budget revisions, key staff changes, and waiver requests for a variety of requirements.

Benefits

Consolidating two or more grants would benefit the grantee by streamlining administrative requirements and removing duplicative efforts. Consolidation eliminates tracking cost allocation over multiple Head Start grants with different funding cycles. It also reduces reporting and budget revisions and amendments by grant, and auditing of multiple grants with different cycles. It also affords grantees the opportunity to plan and operate multiple Head Start and Early Head programs more efficiently and cohesively. Funding would support the programs more holistically, and governing bodies and Policy Councils would benefit from a more singular view of budgets, needs, and options.

For program staff, preparing one grant application reflecting all needs, goals, services, and options rather than two or more applications would provide more cohesion to program planning and implementation. It would also free up time for programmatic oversight.

One annual PIR would be required rather than two or more, and federal reporting such as changes to centers, key staff, and correspondence would be less burdensome.

There would be less time spent on internally tracking staff time by grant. Consolidation would allow more flexibility for staff to work as needed or benefit from technical assistance funding without the concern of cost allocating.

Risks

Grantees must also consider the risks. Consolidating existing grants or consolidating an existing grant with funding from a new competitive or noncompetitive award means all funds are subject to the project period of the oldest grant.

For example, if you have an existing grant in its third year of a five-year project period and your agency has another grant in its second year, consolidation would mean funds from the newer grant would assume the project period consistent with the months remaining in the older grant. Similarly, if your agency is awarded new funds and requests to consolidate the new funds into an existing grant, those new funds will have a project period consistent with the months remaining in the existing grant. If your agency requests to consolidate new or existing grant funds with a grant that meets one of the conditions of DRS and is required to compete for renewed funding, the competitive funding made available through a Funding Opportunity Announcement will include the new funding that was consolidated with the existing grant.

Grantees considering the opportunity to request to consolidate grants must ensure that governing bodies are fully engaged in the discussions and are aware of both the risks and benefits of consolidation. Once a consolidation request is approved and implemented, it cannot be reversed. Grantees considering consolidation should also evaluate their fiscal capacity to update fiscal systems and policies and procedures to accommodate a potential change in the number of grant awards.

Early Head Start-Child Care Partnership and Early Head Start Expansion Grants

Grantees with more than one grant funded under accounting codes HP, HI, and HM may submit a consolidation request for these grants. However, due to the nature of the current appropriation, these grants cannot be combined with Head Start and Early Head Start grants under accounting codes CH, CI, and CM.

Competitive Funding Opportunity Announcements

New funding opportunities include the consideration of applicant requests to supplement an existing Head Start grant. The grant award made as a result of the competition (competitive supplement) would assume the length of time remaining in the project period of the existing grant award, which may be less than 60 months. Competitive supplemental awards may result in a reduced amount of funding due to the reduced term of the award. Further guidance will be provided to interested applicants with whom OHS enters into pre-award discussions or negotiations.

Intent to Consolidate Existing Grants

Grantees interested in the opportunity to request to consolidate multiple grants are asked to notify OHS of their intent using the Head Start Enterprise System (HSES).

Please use HSES Correspondence and indicate as the subject line "Intent to Consolidate Grants." Choose the "Select All Regional Office Key Staff" box. The content of the correspondence must include the grant numbers you are requesting to consolidate.

OHS will discuss next steps, timelines, and fiscal implications as well as any concerns that may need to be addressed prior to submitting a formal request.

Formal Application Submission and Approval

Grantees must formally request to combine grants via submission of a grant application (e.g., Change of Scope, Noncompetitive New, Noncompetitive Continuation, Supplement, etc.). Indicate the application includes a Change in Scope "Request to Consolidate Grants" by checking the appropriate box.

Grantees negotiating a competitive grant are asked to submit an application in HSES in the grant to be supplemented. The application should include any additional information required to process the submission, such as an updated budget, waivers, cost allocation, and program structure changes resulting from the consolidation.

The Administration for Children and Families reserves the right to deny or delay approval of requests to consolidate Head Start grants.

Please contact your Regional Office should you have questions about requesting to consolidate grants.

Thank you for your work on behalf of children and families.

/ Dr. Deborah Bergeron /

Dr. Deborah Bergeron
Director
Office of Head Start
Office of Early Childhood Development

Office of Head Start (OHS) | 330 C Street, SW | 4th Floor Mary E. Switzer Building | Washington, DC 20201
<https://eclkc.ohs.acf.hhs.gov> | 1-866-763-6481 | [Contact Us](#)

You are receiving this email because you are signed up for Office of Head Start communications. If you prefer not to receive emails of this sort in the future, you can [unsubscribe here](#). You also may [modify your ECLKC email subscriptions](#). Recipients subscribed through the Head Start Enterprise System (HSES) must be removed from HSES by their program or office.

Please do not reply to this email. [Contact](#) customer service for additional support.

 OFFICE OF HEAD START

Title: Agency Information Collection Activities: Proposed Collection; Comment Request – Information Collection for the Child and Adult Care Food Program

Category: Notices

Issuing Agency: U.S. Department of Agriculture, Food and Nutrition Service

Action: Notice

Issue Date Month/Year: 12/2019

Citation: Federal Register Volume 84, Number 247 (Thursday, December 26, 2019) Pages 70930-70931

URL: <https://www.govinfo.gov/content/pkg/FR-2019-12-26/html/2019-27764.htm>

Summary: In accordance with the Paperwork Reduction Act of 1995, this notice invites the general public and other public agencies to comment on this proposed information collection. This collection is a revision of a currently approved information collection.

Abstract: Section 17 of the Richard B. Russell National School Lunch Act (NSLA), as amended, (42 U.S.C. 1766), authorizes the CACFP to provide cash reimbursement and commodity assistance, on a per meal basis, for food service to children in nonresidential child care centers and family day care homes, and to eligible adults in nonresidential adult day care centers. The USDA, through FNS, has established application, monitoring, and reporting requirements to manage the CACFP effectively. The purpose of this submission to OMB is to obtain approval to continue the discussed information collection. States and service institutions participating in the CACFP will submit to FNS account and record information reflecting their efforts to comply with statutory and regulatory Program requirements. Examples of data collected and reported with this collection include, but are not limited to: Applications and supporting documents; records of enrollment; records supporting the free and reduced price eligibility determinations; daily records indicating numbers of program participants in attendance and the number of meals served by type and category; and receipts, invoices and other records of CACFP costs and documentation of non-profit operation of food service.

This is a revision of a currently approved information collection (ICR). Section 17 of the National School Lunch Act, as amended (42 U.S.C. 1766), authorizes the Child and Adult Care Program (CACFP). Under this Program, the Secretary of Agriculture is authorized to provide cash reimbursement and commodity assistance, on a per meal basis, for food service to children in nonresidential child care centers and family or group day care homes, and to eligible adults in nonresidential adult day care centers. This renewal revises reporting and recordkeeping burden and adds public disclosure burden not captured in the previous ICR.

Action Date: Written comments must be received on or before February 29, 2020.

Contact: Comments may be sent to Andrea Farmer, Community Meals Branch, Policy and Program Development Division, Child Nutrition Programs, Food and Nutrition Service, U.S. Department of Agriculture, 1320 Braddock Place, Alexandria, VA 22314. Comments may also be submitted via fax to the attention of Andrea Farmer at 703-305-6294 or via email to Andrea.Farmer@usda.gov. Comments will also be accepted through the Federal eRulemaking Portal. Go to <http://www.regulations.gov>, and follow the online instructions for submitting comments electronically.

All responses to this notice will be summarized and included in the request for Office of Management and Budget approval. All comments will be a matter of public record.

Full Text: <https://www.govinfo.gov/content/pkg/FR-2019-12-26/html/2019-27764.htm>

Office of Head Start (OHS) | 330 C Street, SW | 4th Floor Mary E. Switzer Building | Washington, DC 20201
<https://eclkc.ohs.acf.hhs.gov> | 1-866-763-6481 | [Contact Us](#)

You are receiving this email because you are signed up for Office of Head Start communications. If you prefer not to receive emails of this sort in the future, you can [unsubscribe here](#). You also may [modify your ECLKC email subscriptions](#). Recipients subscribed through the Head Start Enterprise System (HSES) must be removed from HSES by their program or office.

Please do not reply to this email. [Contact](#) customer service for additional support.



**CITY OF LA HABRA
EARLY HEAD START PROGRAM
COMMUNITY ASSESSMENT 2019 - 2024**



Head Start grantees and delegate agencies are mandated to conduct a Community Assessment every five years, with a review and update in each year, following the main assessment.

The Head Start Performance Standards, Subpart A, 1302.11 (b), states that this Community Assessment must include information about the following aspects of the grantee and delegate agency's service area:

- (i) The number of eligible infants, toddlers, preschool age children, and expectant mothers, including their geographic location, race, ethnicity, and languages they speak, including:
 - (A) Children experiencing homelessness in collaboration with, to the extent possible, McKinney-Vento Local Education Agency Liaisons (42 U.S.C. 11432 (6)(A));
 - (B) Children in foster care; and
 - (C) Children with disabilities, including types of disabilities and relevant services and resources provided to these children by community agencies;
- (ii) The education, health, nutrition and social service needs of eligible children and their families, including prevalent social or economic factors that impact their well-being;
- (iii) Typical work, school, and training schedules of parents with eligible children;
- (iv) Other child development, child care centers, and family child care programs that serve eligible children, including home visiting, publicly funded state and local preschools, and the approximate number of eligible children served;
- (v) Resources that are available in the community to address the needs of eligible children and their families; and,
- (vi) Strengths of the community.

The report is organized according to the mandated assessment criteria listed above.

Description of the Data Sources

A variety of data is used to assist in completion of the refunding narrative and budget. The Community Assessment of Orange County Head Start was valuable in giving a broad perspective of trends and patterns in Orange County. Likewise, information gathered from the City of La Habra website, United Way Quality of Life Report, California Department of Education website, and the Conditions of Children in Orange County book served as a valuable tool in determining the information needed for the community assessment.

Internal data sources included the programs past self-assessment reports, Program Information Reports (PIR), child outcomes analysis, monitoring reports, staff training evaluations, parent surveys, and progress reports on goals and objectives and written plans.

(i) The number of eligible infants, toddlers, preschool age children, and expectant mothers, including their geographic location, race, ethnicity, and languages they speak, including:

- (A) Children experiencing homelessness in collaboration with, to the extent possible, McKinney-Vento Local Education Agency Liaisons (42 U.S.C. 11432 (6)(A));
- (B) Children in foster care; and
- (C) Children with disabilities, including types of disabilities and relevant services and resources provided to these children by community agencies;

Population:

Population	2000	2010	2015	2017	2018
Area, La Habra	59,191	60,239	61,725	61,965	62,183
Counties (Orange)	2,846,289	3,010,232	3,116,069	3,190,400	3,010,232
State (California)	33,871,648	37,253,956	38,421,464	39,536,653	37,253,956

Racial Characteristics:

Of the people living in this area in 2017, **62.8%** are White (*of which 59.7% are Hispanic*), **1.2%** are African American, **12.2%** are Asian, **0.06%** are either Native Hawaiian or Pacific Islander, **0.1%** are American Indian or Alaskan Native, **22.2%** are of "some other race" and **4.4%** are of two or more races. In the table below, the percentage of the population that each segment represents in the report area compared to the percent it represents in the state.

Race	2000	2010	2015	2017
White	37,276	35,147	38,277	36,791
African American	979	1,025	673	720
Asian	3,397	5,653	5,756	7,565
Native Hawaiian or Pacific Islander	145	103	39	37
American Indian or Alaskan Native	434	531	266	383
Some Other Race	14,350	15,224	14,175	13,761
Two or More Races	2,610	2,556	2,539	2,708

Ethnicity	2000	2010	2015	2017
Hispanic	29,126	34,449	37,562	36,975

Age Distribution:

In the report area in 2011-2015, **11.08%** of the population is over the age of 65. **63.54%** are of working age (18-64). **25.38%** are under 18, and **7.52%** are under 5 years old.

Age	Number of People in Age Group 2015	Percent of People in Age Group 2015	Percent of People in Age Group (California) 2015
Under 5	4,640	7.52%	6.54%
Under 18	15,663	25.38%	23.88%
Working Age (18-64)	39,221	63.54%	63.64%
Aging (65+)	6,841	11.08%	12.49%

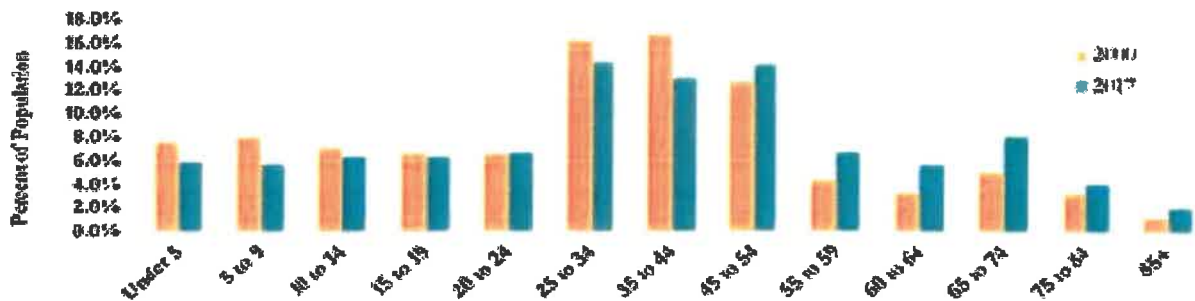
In 2017, **11.11%** of the population is over the age of 65; **61.2%** are working age (20-64); **19.5%** are between ages 5-18 years old, and **7.4%** are under 5 years old.

Age	Estimate	Margin of Error	Percent	Percent Margin of Error
Under 5 years	4,560	+/-492	7.4%	+/-0.8
5 to 9 years	4,050	+/-447	6.5%	+/-0.7
10 to 14 years	4,064	+/-401	6.6%	+/-0.6
15 to 19 years	3,996	+/-380	6.4%	+/-0.6
20 to 24 years	4,395	+/-439	7.1%	+/-0.7
25 to 34 years	10,193	+/-625	16.4%	+/-1.0
35 to 44 years	8,212	+/-537	13.3%	+/-0.9
45 to 54 years	7,842	+/-551	12.7%	+/-0.9
55 to 59 years	4,191	+/-369	6.8%	+/-0.6
60 to 64 years	3,021	+/-316	4.9%	+/-0.5
65 to 74 years	4,063	+/-372	6.6%	+/-0.6
75 to 84 years	2,151	+/-270	3.5%	+/-0.4
85 years and over	1,227	+/-220	2.0%	+/-0.4

People 0-4 Years Old

2000	2009	2010	2015	2017
4,725	4,754	4,356	4,640	4,560

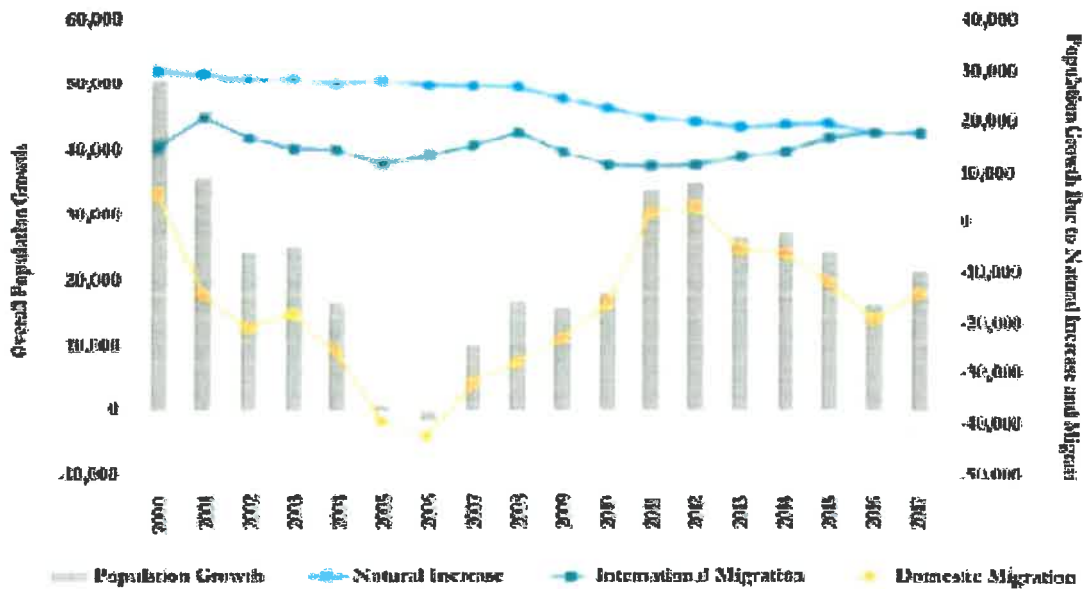
Orange County Age Trends, 2000-2017



Source: U.S. Census Bureau, 2017 American Community Survey

Orange County has also seen accelerating population growth in recent years. In 2017, for example, its population grew by 21,626, compared to a population growth of only 16,500 the previous year. This increasing population growth is largely due to a decrease in negative domestic migration; almost 19,000 residents moved out of the county in 2016 compared to less than 14,000 in 2017, as more Orange County residents choose to stay in the county rather than relocate to neighboring counties and states. This positive trend may be the result of increasing wage growth in Orange County, which helps offset increases in housing costs and other affordability concerns.

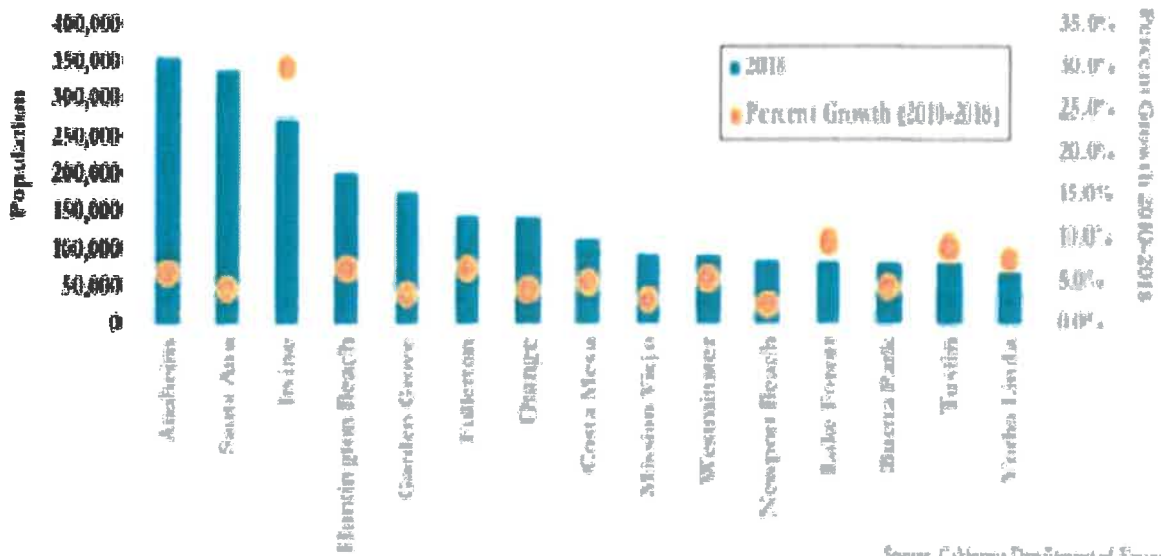
Orange County Population Growth, 2000-2017



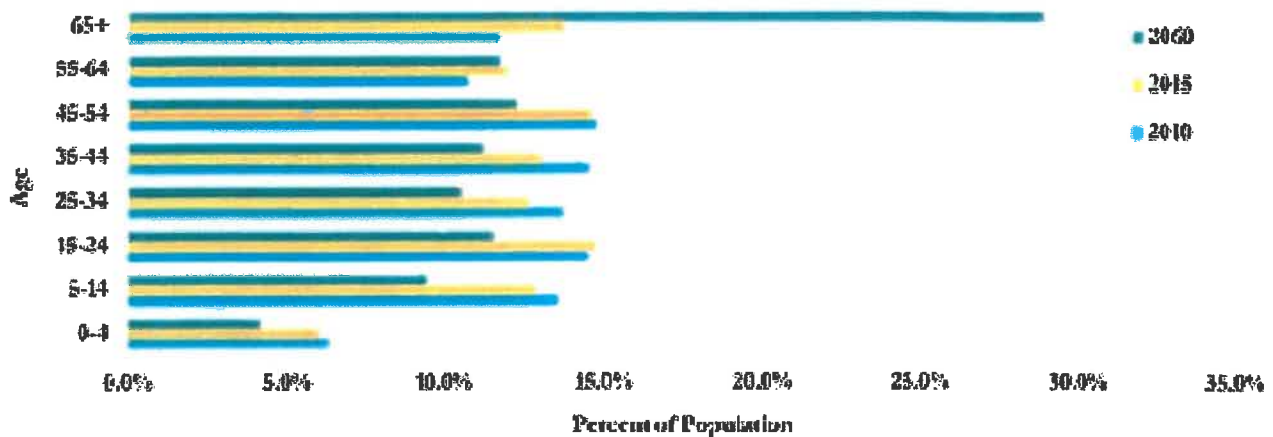
Source: California Department of Finance

Orange County's largest cities, as seen in the following graph, are Anaheim (population 337,048), Santa Ana (338,247) and Irvine (276,176). Irvine, Brea and Lake Forest have experienced the most rapid population growth since 2010, growing by 36, 14.6 and 9.6 percent, respectively, the past year alone has seen Irvine grow by 3.4 percent and Lake Forest by 0.7 percent. Irvine has seen particularly strong population growth due to its central location within the county, unofficial status as a regional business hub, strong infrastructure and reputation as one of the nation's fastest cities, as well as the presence of the University of California, Irvine.

Largest 15 Orange County Cities and 2010-2018 Population Growth Rates



Projected Components of Population by Age in Orange County, 2010-2060



Incomes:

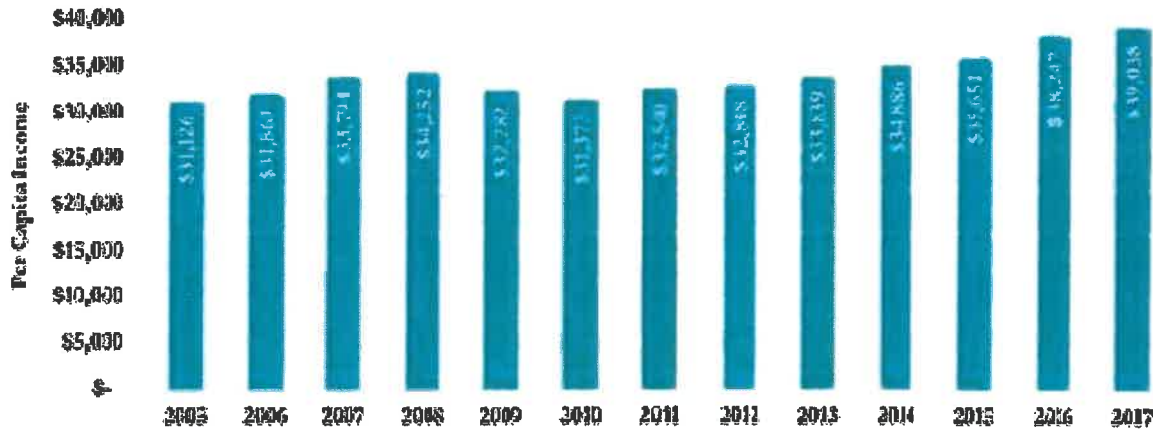
The median household income for the study area was **\$63,037**, compared to the state of California with a median of **\$61,818**, as estimated for 2011-2015 by the Census' American Community Survey.

The number of households divided by income categories is shown in the Annual Income Category table. In 2015, **39.62%** of households in the study area had an annual income of less than \$50,000, compared to **41.34%** of people in the state of California.

Subject	La Habra city, California							
	Households		Families		Married-couple families		Nonfamily households	
	Estimate	Margin of Error	Estimate	Margin of Error	Estimate	Margin of Error	Estimate	Margin of Error
Total	18,899	+/-345	14,439	+/-311	9,986	+/-371	4,460	+/-389
Less than \$10,000	4.0%	+/-0.9	3.9%	+/-1.1	1.4%	+/-0.8	6.2%	+/-1.8
\$10,000 to \$14,999	3.2%	+/-0.8	2.3%	+/-1.0	0.8%	+/-0.5	8.3%	+/-2.6
\$15,000 to \$24,999	7.8%	+/-1.3	6.1%	+/-1.4	4.8%	+/-1.3	14.0%	+/-3.6
\$25,000 to \$34,999	7.6%	+/-1.4	6.8%	+/-1.4	5.5%	+/-1.5	11.6%	+/-2.8
\$35,000 to \$49,999	11.6%	+/-1.3	11.6%	+/-1.4	10.0%	+/-1.5	14.4%	+/-3.5
\$50,000 to \$74,999	17.4%	+/-1.9	17.3%	+/-2.0	16.6%	+/-2.2	18.9%	+/-4.3
\$75,000 to \$99,999	15.4%	+/-1.6	16.1%	+/-1.9	16.2%	+/-2.1	10.7%	+/-3.1
\$100,000 to \$149,999	20.2%	+/-1.8	21.5%	+/-2.3	26.0%	+/-2.9	11.8%	+/-3.5
\$150,000 to \$199,999	6.4%	+/-1.0	6.6%	+/-1.2	8.5%	+/-1.6	3.0%	+/-1.8
\$200,000 or more	6.4%	+/-1.0	7.9%	+/-1.4	10.3%	+/-1.9	1.0%	+/-0.9
Median Income (dollars)	72,178	+/-3,404	77,723	+/-3,155	92,967	+/-5,088	44,500	+/-5,552
Mean Income (dollars)	90,087	+/-4,388	97,015	+/-5,424	N	N	55,255	+/-3,806

According to the Census' American Community Survey estimates, the median income for a family in 2017 was **\$72,178** compared to the state of California with a median family income of **\$70,720**.

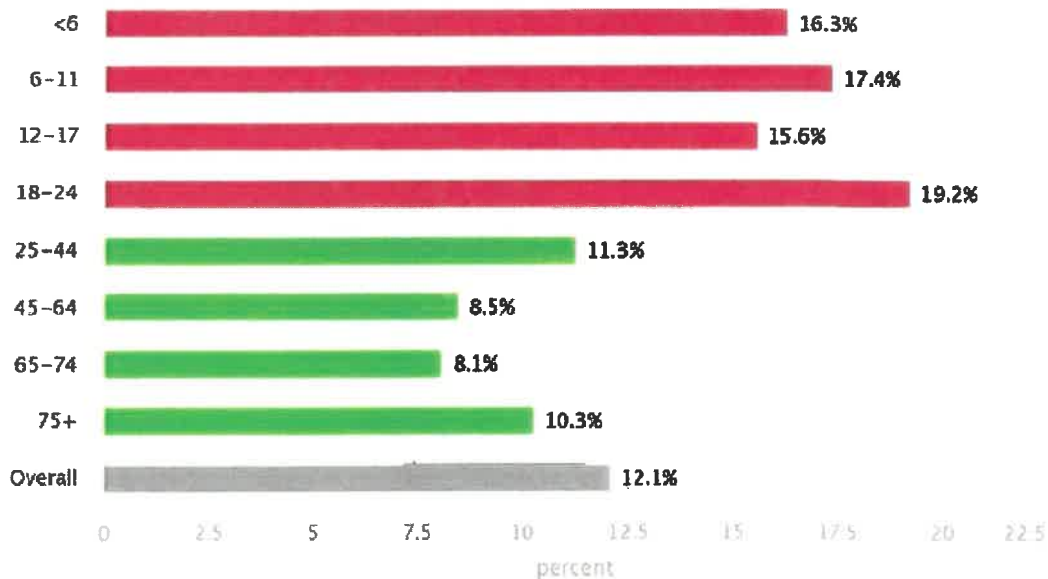
Orange County Per Capita Income, 2005-2017



Source: U.S. Census Bureau, 2017 American Community Survey

Younger people are more likely to live below poverty in Orange County.

Persons Living below Federal Poverty Level by Age
Orange County, 2013-2017



Source: American Community Survey (2013-2017)

Poverty status:

Subject	La Habra city, California					
	Total		Below poverty level		Percent below poverty level	
	Estimate	Margin of Error	Estimate	Margin of Error	Estimate	Margin of Error
Population for whom poverty status is determined	61,410	+/-188	7,687	+/-1,064	12.5%	+/-1.7
AGE						
Under 18 years	14,913	+/-655	2,870	+/-596	19.2%	+/-3.7
Under 5 years	4,398	+/-510	1,002	+/-330	22.8%	+/-6.8
5 to 17 years	10,515	+/-636	1,868	+/-440	17.8%	+/-3.8
Related children of householder under 18 years	14,839	+/-661	2,796	+/-591	18.8%	+/-3.7
18 to 64 years	39,213	+/-614	4,300	+/-589	11.0%	+/-1.5
18 to 34 years	15,967	+/-618	2,242	+/-332	14.0%	+/-2.0
35 to 64 years	23,246	+/-658	2,058	+/-389	8.9%	+/-1.6
60 years and over	10,297	+/-497	702	+/-174	6.8%	+/-1.7
65 years and over	7,284	+/-430	517	+/-156	7.1%	+/-2.1
SEX						
Male	30,190	+/-624	3,469	+/-551	11.5%	+/-1.8
Female	31,220	+/-630	4,218	+/-674	13.5%	+/-2.1

RACE AND HISPANIC OR LATINO ORIGIN

La Habra city, California						
Subject	Total		Below poverty level		Percent below poverty level	
	Estimate	Margin of Error	Estimate	Margin of Error	Estimate	Margin of Error
White alone	36,483	+/-1,559	4,727	+/-894	13.0%	+/-2.3
Black or African American alone	710	+/-250	39	+/-44	5.5%	+/-6.1
American Indian and Alaska Native alone	375	+/-177	7	+/-11	1.9%	+/-3.0
Asian alone	7,527	+/-748	670	+/-284	8.9%	+/-3.7
Native Hawaiian and Other Pacific Islander alone	37	+/-46	0	+/-29	0.0%	+/-50.6
Some other race alone	13,581	+/-1,317	1,979	+/-582	14.6%	+/-4.0
Two or more races	2,697	+/-493	265	+/-177	9.8%	+/-6.2
Hispanic or Latino origin (of any race)	36,609	+/-872	5,737	+/-983	15.7%	+/-2.6
White alone, not Hispanic or Latino	15,684	+/-909	1,132	+/-302	7.2%	+/-1.8
EDUCATIONAL ATTAINMENT						
Population 25 years and over	40,717	+/-720	3,873	+/-511	9.5%	+/-1.3
Less than high school graduate	7,070	+/-637	1,320	+/-313	18.7%	+/-4.0
High school graduate (includes equivalency)	9,661	+/-606	988	+/-221	10.2%	+/-2.2
Some college, associate's degree	13,031	+/-680	884	+/-202	6.8%	+/-1.5
Bachelor's degree or higher	10,955	+/-691	681	+/-208	6.2%	+/-1.8
EMPLOYMENT STATUS						
Civilian labor force 16 years and over	32,745	+/-719	2,424	+/-411	7.4%	+/-1.3
Employed	29,899	+/-733	1,844	+/-340	6.2%	+/-1.2
Male	15,787	+/-588	965	+/-203	6.1%	+/-1.3
Female	14,112	+/-522	879	+/-215	6.2%	+/-1.5
Unemployed	2,846	+/-388	580	+/-181	20.4%	+/-5.3
Male	1,504	+/-275	317	+/-148	21.1%	+/-7.9
Female	1,342	+/-272	263	+/-98	19.6%	+/-6.6
WORK EXPERIENCE						
Population 16 years and over	48,306	+/-642	5,174	+/-684	10.7%	+/-1.4
Worked full-time, year-round in the past 12 months	20,548	+/-786	778	+/-184	3.8%	+/-1.0
Worked part-time or part-year in the past 12 months	12,047	+/-588	1,511	+/-346	12.5%	+/-2.6
Did not work	15,711	+/-648	2,885	+/-381	18.4%	+/-2.2
ALL INDIVIDUALS WITH INCOME BELOW THE FOLLOWING POVERTY RATIOS						
50 percent of poverty level	2,783	+/-555	(X)	(X)	(X)	(X)
125 percent of poverty level	10,730	+/-1,186	(X)	(X)	(X)	(X)
150 percent of poverty level	13,127	+/-1,266	(X)	(X)	(X)	(X)
185 percent of poverty level	17,264	+/-1,397	(X)	(X)	(X)	(X)
200 percent of poverty level	18,966	+/-1,370	(X)	(X)	(X)	(X)
300 percent of poverty level	28,954	+/-1,476	(X)	(X)	(X)	(X)
400 percent of poverty level	38,169	+/-1,566	(X)	(X)	(X)	(X)
500 percent of poverty level	44,934	+/-1,271	(X)	(X)	(X)	(X)

La Habra city, California

Subject	Total		In married-couple family household		In male householder, no wife present, family household		In female householder, no husband present, family household	
	Estimate	Margin of Error	Estimate	Margin of Error	Estimate	Margin of Error	Estimate	Margin of Error
Children under 18 years in households	15,285	+/-628	10,647	+/-693	1,671	+/-488	2,879	+/-413
AGE								
Under 6 years	34.6%	+/-3.1	36.0%	+/-3.5	38.5%	+/-12.1	27.5%	+/-7.1
6 to 11 years	32.5%	+/-2.9	31.9%	+/-3.1	35.5%	+/-12.5	33.1%	+/-6.6
12 to 17 years	32.9%	+/-2.5	32.1%	+/-3.1	26.0%	+/-8.2	39.4%	+/-7.9
RACE AND HISPANIC OR LATINO ORIGIN								
One race	91.0%	+/-2.1	91.7%	+/-2.4	94.7%	+/-4.9	86.2%	+/-7.0
White	56.1%	+/-4.2	53.8%	+/-4.9	54.9%	+/-15.8	65.0%	+/-8.4
Black or African American	0.5%	+/-0.6	0.1%	+/-0.1	3.1%	+/-5.0	0.8%	+/-0.9
American Indian and Alaska Native	0.5%	+/-0.5	0.3%	+/-0.3	2.7%	+/-4.3	0.0%	+/-1.2
Asian	6.5%	+/-1.5	7.9%	+/-2.2	0.0%	+/-2.1	5.0%	+/-2.9
Native Hawaiian and Other Pacific Islander	0.0%	+/-0.2	0.0%	+/-0.3	0.0%	+/-2.1	0.0%	+/-1.2
Some other race	27.3%	+/-3.9	29.5%	+/-4.6	34.1%	+/-14.4	15.5%	+/-6.1
Two or more races	9.0%	+/-2.1	8.3%	+/-2.4	5.3%	+/-4.9	13.8%	+/-7.0
Hispanic or Latino origin (of any race)	78.3%	+/-2.4	76.9%	+/-3.3	93.7%	+/-5.4	73.9%	+/-7.3
White alone, not Hispanic or Latino	12.2%	+/-2.0	12.1%	+/-2.6	3.2%	+/-2.4	17.8%	+/-6.6
RELATIONSHIP TO HOUSEHOLDER								
Own child (biological, step or adopted)	82.8%	+/-2.7	87.8%	+/-2.8	72.4%	+/-11.0	73.1%	+/-8.2
Grandchild	10.9%	+/-2.1	8.4%	+/-2.1	9.6%	+/-6.8	20.9%	+/-7.4
Other relatives	3.4%	+/-1.4	2.7%	+/-1.7	9.3%	+/-6.9	2.7%	+/-2.0
Foster child or other unrelated child	2.9%	+/-1.1	1.1%	+/-0.8	8.7%	+/-6.9	3.3%	+/-3.8
NATIVITY								
Native	96.3%	+/-1.3	96.4%	+/-1.5	93.4%	+/-5.8	97.3%	+/-2.5
Foreign born	3.7%	+/-1.3	3.6%	+/-1.5	6.6%	+/-5.8	2.7%	+/-2.5
PRESENCE OF OTHER ADULTS								
Unmarried partner of householder present	10.2%	+/-3.1	(X)	(X)	65.5%	+/-15.1	12.8%	+/-6.3
DISABILITY STATUS								
Civilian children under 18 years in households	15,285	+/-628	10,647	+/-693	1,671	+/-488	2,879	+/-413
With any disability	3.6%	+/-1.1	2.9%	+/-0.9	2.1%	+/-2.4	6.9%	+/-4.4
SCHOOL ENROLLMENT								
Children 3 to 17 years in households	12,306	+/-631	8,560	+/-602	1,341	+/-381	2,328	+/-413
Enrolled in school	11,193	+/-651	7,779	+/-621	1,166	+/-353	2,171	+/-408

La Habra city, California

Subject	Total		In married-couple family household		In male householder, no wife present, family household		In female householder, no husband present, family household	
	Estimate	Margin of Error	Estimate	Margin of Error	Estimate	Margin of Error	Estimate	Margin of Error
Public	89.4%	+/-2.2	88.0%	+/-2.6	96.2%	+/-4.3	90.5%	+/-6.4
Private	10.6%	+/-2.2	12.0%	+/-2.6	3.8%	+/-4.3	9.5%	+/-6.4
Not enrolled in school	1,113	+/-218	781	+/-164	175	+/-101	157	+/-93
MEDIAN FAMILY INCOME IN THE PAST 12 MONTHS (IN 2017 INFLATION-ADJUSTED DOLLARS) FOR FAMILIES WITH OWN CHILDREN								
Median income (dollars)	67,685	+/-7,331	85,440	+/-8,243	27,331	+/-19,668	33,598	+/-7,702
Children under 18 years in households	15,285	+/-628	10,647	+/-693	1,671	+/-488	2,879	+/-413
PUBLIC ASSISTANCE IN THE PAST 12 MONTHS								
Children living in households with Supplemental Security Income (SSI), cash public assistance income, or Food Stamp/SNAP benefits	22.3%	+/-4.1	15.5%	+/-4.1	39.9%	+/-18.6	37.5%	+/-9.7
POVERTY STATUS IN THE PAST 12 MONTHS								
Children in households for whom poverty status is determined	14,913	+/-655	10,552	+/-697	1,526	+/-467	2,815	+/-407
Income in the past 12 months below poverty level	19.2%	+/-3.7	12.0%	+/-3.5	34.9%	+/-16.2	37.5%	+/-9.2
Income in the past 12 months at or above poverty level	80.8%	+/-3.7	88.0%	+/-3.5	65.1%	+/-16.2	62.5%	+/-9.2
HOUSING TENURE								
Children under 18 years in occupied housing units	15,285	+/-628	10,647	+/-693	1,671	+/-488	2,879	+/-413
In owner-occupied housing units	45.7%	+/-4.3	56.4%	+/-5.1	18.6%	+/-10.5	21.9%	+/-6.2
In renter-occupied housing units	54.3%	+/-4.3	43.6%	+/-5.1	81.4%	+/-10.5	78.1%	+/-6.2

Immigration:

Data from the U.S. Census Bureau for 2011-2015 indicate that **17,382** people or **28.16%** of the population living in this area were "foreign born". Census defines foreign born as anyone who is not a U.S. citizen at birth. This area is located in California, which, according to the Department of Homeland Security, was home to **198,379** people who were granted Legal Permanent Residence status in 2014. Those LPRs, or "green cards", represent **19.52%** of green cards issued in the nation that year.

Families and Households:

The composition of the **14,090** families who reside in the study area is shown in the table below. Families are groups of related people who live together, whereas households refer to the person or group of people living in any one housing unit. Generally, households that do not contain a family are made up of unrelated people living together (eg, roommates) or people living alone. While it is possible for two families to share a household, the difference between the number of households and the number of families in an area shows, approximately, the number of non-family households in a place.

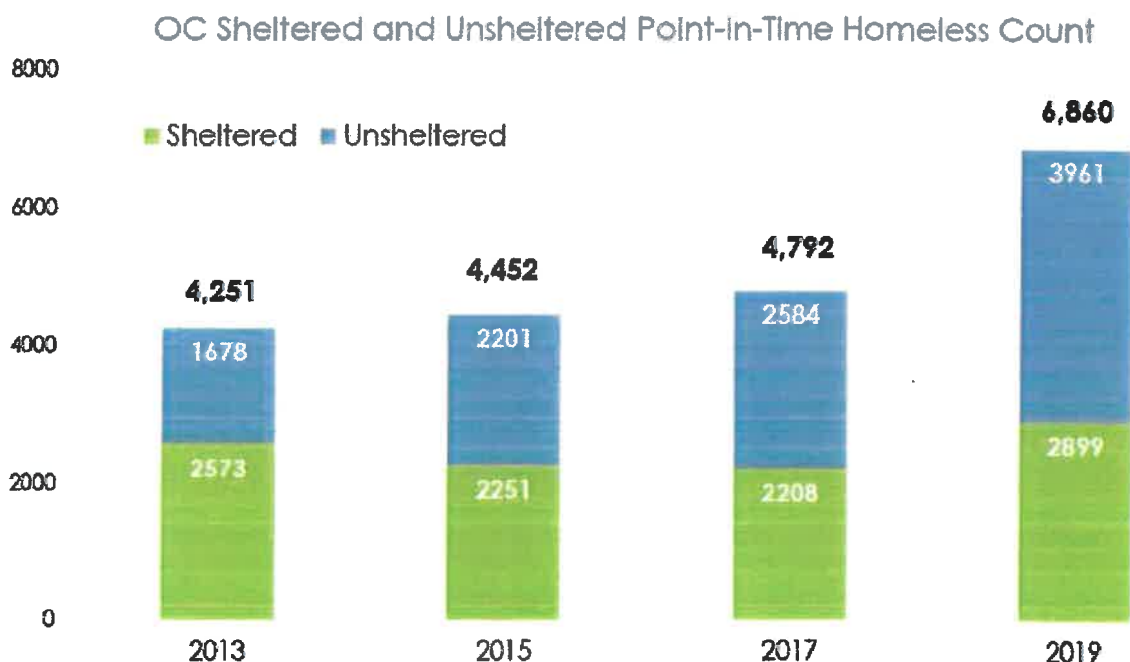
2011-2015 Family Composition	Number of Families	Percent of Families
City (La Habra)		
Families	14,090	--
Married with Children	4,645	32.97%
Single with Children	1,859	13.19%
Single Female with Children	1,288	9.14%
Other Families	7,586	53.84%
County (Orange)		
Families	727,053	--
Married with Children	251,320	34.57%
Single with Children	80,367	11.05%
Single Female with Children	58,700	8.07%
Other Families	395,366	54.38%
State (California)		
Families	8,732,734	--
Married with Children	2,826,067	32.36%
Single with Children	1,232,917	14.12%
Single Female with Children	889,749	10.19%
Other Families	4,673,750	53.52%

Note: The category "Single with Children" includes all families that are "Single Female with Children", so all categories do not add up to 100 percent.

Subject	Estimate	Margin of Error	Percent	Percent Margin of Error
HOUSING OCCUPANCY				
Total housing units	19,655	+/-375	19,655	(X)
Occupied housing units	18,899	+/-345	96.2%	+/-0.8
Vacant housing units	756	+/-167	3.8%	+/-0.8
Homeowner vacancy rate	0.7	+/-0.6	(X)	(X)
Rental vacancy rate	5.5	+/-1.8	(X)	(X)
UNITS IN STRUCTURE				
Total housing units	19,655	+/-375	19,655	(X)
1-unit, detached	10,155	+/-364	51.7%	+/-1.5
1-unit, attached	1,845	+/-237	9.4%	+/-1.2
2 units	106	+/-50	0.5%	+/-0.3

3 or 4 units	1,073	+/-193	5.5%	+/-1.0
5 to 9 units	1,325	+/-211	6.7%	+/-1.1
10 to 19 units	1,459	+/-280	7.4%	+/-1.4
20 or more units	2,863	+/-273	14.6%	+/-1.3
Mobile home	829	+/-127	4.2%	+/-0.7
Boat, RV, van, etc.	0	+/-29	0.0%	+/-0.2

On a single night in January 2019, **6,860 people** experienced homelessness in Orange County.



Source: Homeless Point-In-Time Count at <http://ochmis.org/point-in-time-count-pit/>

Employment:

The following table shows the number of people who were employed, unemployed, in the labor force, and the unemployment rate for the market in which the report area is located, according to the Bureau of Labor Statistics.

Unemployment rate	June 2016	July 2016	August 2016	September 2016	October 2016	November 2016
City (La Habra)						
Employed	29,782	30,001	30,024	30,379	30,444	30,446
Unemployed	1,570	1,644	1,559	1,458	1,478	1,341
In Labor Force	31,352	31,645	31,583	31,837	31,922	31,787
Unemployment Rate	5	5.2	4.9	4.6	4.6	4.2
County (Orange)						
Employed	1,541,527	1,552,850	1,554,055	1,572,428	1,575,765	1,575,909
Unemployed	71,066	74,411	70,570	66,003	66,898	60,709

In Labor Force	1,612,593	1,627,261	1,624,625	1,638,431	1,642,663	1,636,618
Unemployment Rate	4.4	4.6	4.3	4	4.1	3.7
State (California)						
Employed	18,093,897	18,231,530	18,280,764	18,406,447	18,434,626	18,381,594
Unemployed	1,087,591	1,135,902	1,076,360	1,028,577	1,030,568	976,424
In Labor Force	19,181,488	19,367,432	19,357,124	19,435,024	19,465,194	19,358,018
Unemployment Rate	5.7	5.9	5.6	5.3	5.3	5

- Disparities among racial/ethnic groups contribute to high numbers of head start and early head start eligible children in Orange County.
- Overall, in Orange County, about 1 in 8 people are living below the federal poverty level in Orange County.
 - 1 in 4 children is living in poverty, 1 in 4 Hispanic children; 1 in 8 Asian children, and 1 in 17 White children.
 - At the poverty rate of 27.9%, Hispanic children are the greatest risk of living in poverty in Orange county, compared to 11.9% for Asian Children and 6.3% for white children.
 - In Orange County, 16.9% of children (123,845) live in poverty.
- There are no significant demographic changes determined by the Community Assessment in regards to the Head Start and Early Head Start eligible children and families in relation to the estimated number, geographical location, or racial/ethnic composition.
- The assessment continued to document no major changes in social services than those currently identified and being addressed through the program's objectives and services.

	La Habra city, California	
	Estimate	Margin of Error
Total:	37,413	+/-1,864
Less than high school graduate	22,620	+/-1,462
High school graduate (includes equivalency)	31,718	+/-1,706
Some college or associate's degree	39,137	+/-2,751
Bachelor's degree	51,646	+/-4,274
Graduate or professional degree	76,895	+/-6,192
Male:	41,056	+/-1,184
Less than high school graduate	28,311	+/-4,148
High school graduate (includes equivalency)	36,591	+/-2,577
Some college or associate's degree	41,708	+/-2,015
Bachelor's degree	58,000	+/-8,543
Graduate or professional degree	84,095	+/-8,103
Female:	33,682	+/-2,594
Less than high school graduate	12,986	+/-1,492
High school graduate (includes equivalency)	26,483	+/-2,420
Some college or associate's degree	35,625	+/-2,228
Bachelor's degree	45,025	+/-7,371
Graduate or professional degree	71,191	+/-7,499

Special Education Enrollment by Age and Disability 3066563 - -La Habra City Elementary

Age	Intellectual Disability (MR)	Hard of Hearing (HH)	Deaf (DEAF)	Speech or Language Impairment (SLI)	Visual Impairment (VI)	Emotional Disturbance (ED)	Orthopedic Impairment (OI)	Other Health Impairment (OHI)	Specific Learning Disability (SLD)	Deaf-Blindness (DB)	Multiple Disability (MD)	Autism (AUT)	Traumatic Brain Injury (TBI)
0	0	0	0	0	0	0	0	0	0	0	0	0	0
1	0	0	0	0	0	0	0	0	0	0	0	0	0
2	0	0	0	0	0	*	0	0	0	0	0	0	0
3	0	0	0	26	0	0	0	*	0	0	0	*	0
4	*	0	0	25	0	0	0	*	0	0	*	20	0
5	*	*	0	27	0	0	*	*	0	0	0	12	0
County Total	2,682	784	218	13,814	213	1,595	665	8,436	17,216	*	664	10,750	96
State Total	43,770	10,657	3,223	184,698	3,405	25,233	9,916	104,792	300,295	114	7,308	120,095	1,541

Special Education Enrollment by Age and Disability 3001 North Orange County SELPA

Age	Intellectual Disability (MR)	Hard of Hearing (HH)	Deaf (DEAF)	Speech or Language Impairment (SLI)	Visual Impairment (VI)	Emotional Disturbance (ED)	Orthopedic Impairment (OI)	Other Health Impairment (OHI)	Specific Learning Disability (SLD)	Deaf-Blindness (DB)	Multiple Disability (MD)	Autism (AUT)	Traumatic Brain Injury (TBI)
0	0	*	0	0	0	0	0	0	0	0	0	0	0
1	0	*	0	0	0	0	*	0	0	0	0	0	0
2	0	*	0	0	*	0	*	0	0	0	0	0	0
3	*	*	*	87	*	0	*	*	0	0	0	54	0
4	12	*	*	136	0	*	*	*	*	0	*	62	0
5	11	*	*	140	0	*	*	19	0	0	*	62	0

Number of Children served by the Regional Center of Orange County by Geographic Region, 2010-13

Region of Orange County	Number of Children Served December 2010	Number of Children Served December 2011	Number of Children Served December 2012	Number of Children Served December 2013
North	655	671	614	622
West	737	701	669	615
South/East/Central	1,509	1,391	1,257	1,250
Total	2,901	2,763	2,540	2,487

- The number of children diagnosed with autism in Orange County decreased the first decrease in 10 years. There is no new data regarding this information.
- The most prevalent type of disability is speech or language impairments followed by autism for children three (3) years and younger.

- It is evident that there has been a decrease in the number of children with special needs for children ages 0-2, with 0 children reported in the 2012-13 school year. There is no new data available regarding children with special needs.
- No report on children with the following types of disability compared to the previous two years in Mental Retardation, Visual Impairment, Emotional Disturbance, Orthopedic Impairment, and Other Health Impairment.

(ii) The education, health, nutrition and social service needs of eligible children and their families, including prevalent social or economic factors that impact their well-being;

a) Education

Percent of School Students Attending Public School		
2000	2009	2015
92.1%	90.23%	91.79%

Total Public School Enrollment:

	2009-10	2010-11	2011-12	2012-13	2013-14	2014-15	2015-16	2016-17	2017-18	2018-19
La Habra	5574	5430	5234	5250	5149	50222	4913	4726	4713	4656

Percent of School Students Attending Private School		
2000	2009	2015
7.9%	9.77%	8.21%

La Habra city, California

Subject

Subject	Total			In public school			Percent in public school			In private school			Percent in private school		
	Estimate	Margin of Error	Estimate	Margin of Error	Estimate	Margin of Error	Estimate	Margin of Error	Estimate	Margin of Error	Estimate	Margin of Error	Estimate	Margin of Error	
Population 3 years and over enrolled in school	16,674	+/-790 (X)	6.2%	(X)	688	(X)	87.1%	+/-1.9	(X)	339	(X)	12.9%	+/-1.9		
Nursery school, preschool	1,027	+/-199	6.2%	+/-1.2	688	+/-159	67.0%	+/-10.2		339	+/-132	33.0%	+/-10.2		
Kindergarten to 12th grade	10,605	+/-692	63.6%	+/-2.7	9,753	+/-660	92.0%	+/-2.3		852	+/-260	8.0%	+/-2.3		
Kindergarten	664	+/-155	4.0%	+/-0.9	604	+/-152	91.0%	+/-7.1		60	+/-48	9.0%	+/-7.1		
Elementary: grade 1 to grade 4	3,037	+/-381	18.2%	+/-1.9	2,747	+/-366	90.5%	+/-4.7		290	+/-151	9.5%	+/-4.7		
Elementary: grade 5 to grade 8	3,231	+/-346	19.4%	+/-1.9	2,955	+/-321	91.5%	+/-4.0		276	+/-136	8.5%	+/-4.0		
High school: grade 9 to grade 12	3,673	+/-359	22.0%	+/-2.0	3,447	+/-336	93.8%	+/-2.6		226	+/-99	6.2%	+/-2.6		
College, undergraduate	4,396	+/-435	26.4%	+/-2.3	3,827	+/-404	87.1%	+/-3.5		569	+/-166	12.9%	+/-3.5		
Graduate, professional school	646	+/-154	3.9%	+/-0.9	258	+/-93	39.9%	+/-12.3		388	+/-129	60.1%	+/-12.3		

Population 3 to 4 years	1,581	+/- 249	(X)	(X)	(X)	(X)	(X)	(X)	(X)	(X)	(X)	(X)	(X)
3 to 4 year olds enrolled in school	673	+/- 160	42.6%	+/-8.5	512	+/-153	76.1%	+/-11.1	161	+/-79	23.9%	+/-11.1	(X)
Population 5 to 9 years	4,050	+/- 447	(X)	(X)	(X)	(X)	(X)	(X)	(X)	(X)	(X)	(X)	(X)
5 to 9 year olds enrolled in school	3,913	+/- 443	96.6%	+/-2.0	3,450	+/-406	88.2%	+/-4.1	463	+/-176	11.8%	+/-4.1	(X)
Population 10 to 14 years	4,064	+/- 401	(X)	(X)	(X)	(X)	(X)	(X)	(X)	(X)	(X)	(X)	(X)
10 to 14 year olds enrolled in school	4,025	+/- 405	99.0%	+/-1.0	3,667	+/-355	91.1%	+/-4.0	358	+/-178	8.9%	+/-4.0	(X)

Total Licensed Early Care and Education Capacity, Family Child Care Homes (FCCH) and Child Care Centers

	2014-15		2015-16		2016-17		2017-18		2018-19	
	FCCH	Child Care Centers	FCCH	Child Care Centers	FCCH	Child Care Centers	FCCH	Child Care Centers	FCCH	Child Care Centers
Infant (0-2)	N/A	4,137	N/A	4,149	N/A	4,123	N/A	4,194	N/A	4,193
Preschool (2-5)	N/A	51,032	N/A	50,788	N/A	49,122	N/A	48,878	N/A	49,054
School-Age (6-12)	N/A	16,030	N/A	15,867	N/A	15,712	N/A	15,280	N/A	15,071
Total	N/A	71,199	N/A	70,804	N/A	68,957	N/A	68,352	N/A	68,318

Request for Child Care Referrals, Reason, and Type of Child Care Needed in 2018-19 (in Orange County)

Reason Care is Needed	Number of Families that Called	Type of Care	Number of Children
Employed	6,073	Full-Time	8,412
Seeking Employment	1,389	Part-Time	3,055
School/ Training	1,114	Daytime Hours	9,414
Other	417	Alternative Care Hours**	1,237

Note: The requests for child referrals has increased substantially from previous year due to a large increase in the child care funds available for Orange County and the capacity to serve more families..

**Includes requests for before and after school care.

**Includes evening, weekend, drop-in or overnight care. Source: Children's Home Society of California's Child Care Resource and Referral Program

Kindergarten readiness: In the Early Development Index continues to show children are most vulnerable in the areas of communication skills and general knowledge, and language and cognitive development. Hispanic children are the most developmentally vulnerable.

Number and Percent of Children Developmentally Vulnerable on One or More Areas, by Community, 2019

Number of children	Physical Health and Well-Being	Social Competence	Emotional Maturity	Language and Cognitive Development	Communication Skills and General Knowledge
1,053	9%	13.9%	11.4%	12.2%	14.5%

Percent of Children Developmentally Vulnerable or At Risk on One or More Areas and On Track on all Areas, by Community, 2019

Number of Children	Developmentally Vulnerable on One or More Areas	Developmentally at Risk on One of More Areas	Developmentally on Track on all Areas	Multiple Challenges
1,053	27.1%	27.6%	45.3%	7.5%

Developmentally On Track on All Areas refers to children on track on all valid areas. A record may be valid with just four completed areas.

Multiple challenges defined as not ready on 9 or more subdomains (16 total subdomains).

Source: Early Development Index, 2019

English Language Learners

In 2001-02, in the county, there were 31.1% enrolled children who are English Language Learners, while in 2010-11, the number dropped to 25.1%. In 2010-11, the total number of students that are classified as English Language Learners is 5,431 or 39.5%, which is the 8th highest district in Orange County.

2014-15		2015-16		2016-17		2017-18		2018-19	
Number	%	Number	%	Number	%	Number	%	Number	%
1986	39.5	1830	37.2	1542	32.6	1477	31.3	1436	30.8

High School Graduates

26% of the population in La Habra has at least a high school degree and 22.7% have a college degree. In 2010-11, in the county, there is a 90% graduation rate for children enrolled. High school graduation rates continue to increase in Orange County. In 2012-13, the overall graduation rate was 87.5% compare to 85.9% in 2011-12.

Access to Healthcare

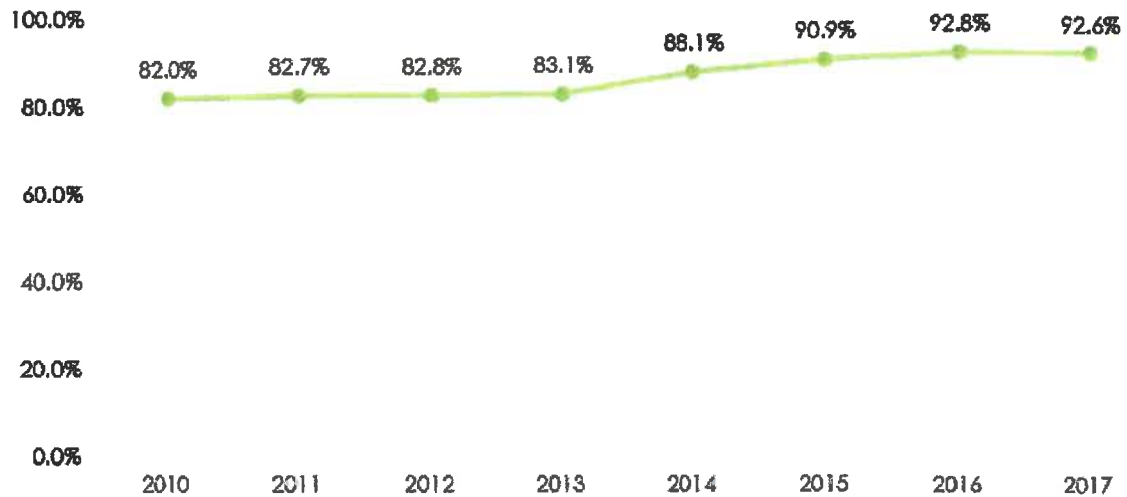
Number of children receiving health care through:

Insurance	Past 10 years Data (2003)	2012 Data
Medi-Cal Under age 18	163,433	219,418
Healthy Families	62,470	81,928
California Kids	4,270	798
Keiser Permanente Child Health Plan	309	6,405

	Number of Families	Margin of Error	Percentage	Percent Margin of Error
HEALTH INSURANCE COVERAGE				
Civilian noninstitutionalized population	61,750	+/-122	61,750	(X)
With health insurance coverage	54,566	+/-869	88.4%	+/-1.4
With private health insurance	39,120	+/-1,407	63.4%	+/-2.3
With public coverage	20,146	+/-1,075	32.6%	+/-1.7
No health insurance coverage	7,184	+/-859	11.6%	+/-1.4
Civilian noninstitutionalized population under 19 years	16,013	+/-684	16,013	(X)
No health insurance coverage	817	+/-261	5.1%	+/-1.6
Civilian noninstitutionalized population 19 to 64 years	38,453	+/-651	38,453	(X)
In labor force:	30,919	+/-702	30,919	(X)
Employed:	28,453	+/-692	28,453	(X)
With health insurance coverage	24,464	+/-766	86.0%	+/-2.0
With private health insurance	21,939	+/-821	77.1%	+/-2.2
With public coverage	2,940	+/-349	10.3%	+/-1.3
No health insurance coverage	3,989	+/-585	14.0%	+/-2.0
Unemployed:	2,466	+/-361	2,466	(X)
With health insurance coverage	1,808	+/-281	73.3%	+/-7.9
With private health insurance	946	+/-188	38.4%	+/-7.1
With public coverage	944	+/-239	38.3%	+/-8.4
No health insurance coverage	658	+/-238	26.7%	+/-7.9
Not in labor force:	7,534	+/-390	7,534	(X)
With health insurance coverage	5,893	+/-357	78.2%	+/-3.8
With private health insurance	3,596	+/-273	47.7%	+/-3.5
With public coverage	2,599	+/-276	34.5%	+/-3.2
No health insurance coverage	1,641	+/-321	21.8%	+/-3.8

92.6% of OC residents have health insurance; rates have increased since 2010.

Population with Health Insurance, Orange County, 2010 to 2017



96.7% of children (under-18 years) have health insurance



89.5% of adults (18-64 years) have health insurance



99.0% of older adults (65+ years) have health insurance

Health Coverage

- Health care coverage is a gateway to vital health care services, facilitating the use of routine medical services and defraying the costs from an unexpected health crisis.
- In 2009, nearly one in five (17.3% or 175,430) Hispanics had incomes below the poverty line. Income is a strong predictor of whether an individual has health care coverage or not.

- In 2012, approximately 6.9% of children in Orange County were uninsured compared to 8.2% in 2011. In the Conditions of Children in OC, it was indicated that there are 7.6% children who are uninsured.
- Orange County Health Needs Assessment (OCHNA) 2007 survey data results show that there is a statistically significant relationship between low income and lack of health care coverage for Latinos (Chi-square=95.925, p<0.001).
- Over half (54.6% or 49,476) of Hispanic/Latino adults who had annual household income less than \$25,000 did not have health care coverage, compared to only 0.8% (1,957) of Latino adults with household income of \$75,000 or more.
- Orange County Health Needs Assessment (OCHNA) 2007 survey results estimated that 14.9% (102,143) of Hispanic adults did not have health care coverage.
- Close to half (47.9% or 53,613) of Latinos without coverage indicated that they did not have coverage because they could not afford to pay the premiums.
- 18.1% (20,284) did not have coverage because either they or their spouse lost their job or changed employers.

Children's Access to Health Care Coverage

- With the high cost of medical care, health coverage enables families to provide essential care for their children without overstretching their budgets.
- Those without any coverage or with very limited coverage have substantial challenges accessing health care.

Number and Percent of Children Uninsured, by Race/Ethnicity, 2010 to 2017

	2010		2011		2012		2013		2014		2015		2016		2017	
	No.	%	No.	%	No.	%	No.	%	No.	%	No.	%	No.	%	No.	%
Hispanic	51,000	15.0	40,124	11.5	36,000	10.2	36,071	10.3	23,149	6.8	14,677	4.3	10,002	3.2	10,563	3.0
Asian	7,831	6.7	7,500	6.3	8,006	6.8	8,096	7.1	4,122	3.7	3,822	3.0	2,767	2.2	5,100	3.9
White	10,961	4.7	11,437	5.0	6,516	2.6	10,240	4.7	6,463	3.0	5,612	2.6	3,992	1.9	9,464	2.6
Other	1,114	2.0	1,584	1.8	1,760	4.0	1,429	3.0	2,341	4.5	736	1.5	816	1.8	776	1.5
Total	71,496		60,445		60,284		56,336		34,074		24,447		18,520		24,922	

Source: ACS (1 Yr estimates, 2010-2017)
 (Other includes: Black/African American, AIAN, 2+ races, and Other races)

- There are several health coverage packages that are designed specifically to meet the needs of children, such as Kaiser Permanente Child Health Plan and California Kids; a privately sponsored program aimed at providing coverage for low-income children who do not meet all the eligibility requirements for government-subsidized programs and who have no source of private coverage.

- Public sector government-subsidized health care programs which provide coverage to children include Access for Infants and Mothers (AIM) and Healthy Families.
- The more recent ACS estimate is much greater, and this is most likely a result of the loss of jobs in the recent economic recession, as 68.1% (250,607) of Hispanic children with coverage in 2007 had employer-based coverage, according to Orange County Health Needs Assessment estimates.
- The percentage of Hispanic/Latino children covered by a government plan was 5 times the percentage of white children covered by a government plan (22.2% vs. 4.0% or 10,158, respectively). Without government support, the percentage of Hispanic/Latino children without health care coverage would be much higher.
- Healthy Families began in June 1998 and provides low-cost health, dental, and vision coverage to children and teens of families whose incomes are too high to qualify for free Medi-Cal, but are still below 250% of the federal poverty level.
- Healthy Families covers a range of health care services, including physician visits, hospital care, prescription drugs, and home health care, and dental and mental health services.
- In March 2011, 82,385 children were enrolled in Healthy Families in Orange County; Hispanic/Latino children accounted for nearly half (45.6% or 37,538) of all the current subscribers in the county.

The following table compares the rates of children with no coverage for dental, vision, mental health, and prescription drugs by race/ethnicity.

Children Without Other Types of Coverage by Race/Ethnicity, OCHNA 2007				
Coverage	White	Hispanic/Latino	Vietnamese	Other Asian/PI
Dental	18.5% 48,099	18.2% 69,161	20.7% 8,810	22.7% 13,740
Vision	27.2% 68,495	22.5% 84,321	23.8% 9,375	31.8% 18,211
Mental Health Chi-square=98.344, p <0.001	19.9% 41,459	26.2% 80,894	45.3% 14,625	30.8% 13,939
Prescription Drug Chi-square =35.290, p <0.001	5.6% 14,480	9.7% 36,964	15.3% 6,540	5.7% 3,423

- There were a total of 367,226 CalOptima Medi-Cal members in Orange County in March 2011 (includes those who listed PO Box addresses).
- Among the members, over 49% (49.3% or 181,050) of members were classified as Hispanic/Latino.

The table below lists the number of CalOptima Medi-Cal members by age group for Hispanic/Latinos in Orange County as well as the countywide membership totals.

CalOptima Medi-Cal Participation by Age Group for Hispanics/Latinos and All Orange County, March 2011			
Age Group	Percent Hispanic/Latino	Number of Hispanic/Latino Members	Total Members
0-17	67.3%	132,043	196,192
18-64	33.3%	36,198	108,549
65+	20.5%	12,809	62,485
Total	49.3%	181,050	367,226

- One in five (20.5% or 12,809) CalOptima Medi-Cal members in Orange County in the age group 65+ was Hispanic/Latino.
- Over two-thirds (67.3% or 132,043) of CalOptima Medi-Cal members in the age group 0-17 were Hispanic/Latino.
- In 2016, 2.5% of children were uninsured, representing a drop in uninsured rates by 77.1% since 2008 (from 10.9%).
- Orange County went from having a higher rate of uninsured children in 2008 (10.9%) than California (10.0%) and the United States (9.3%), to having a lower rate than both California (2.9%) and the United States (4.5%) in 2016.
- More Hispanic children continue to have higher uninsured rates than other racial/ethnic groups, with 3.2% of Hispanic children uninsured in 2016, compared with Asian children (2.2%), White children (1.9%), and Other races (1.8%). However, this gap is shrinking.
- Uninsured percentages of very young children (0-5 years old) have dropped by 78.7%, from 8.9% in 2009 to 1.9% in 2016. Similarly, rates of uninsured 6-17 year olds have dropped by nearly three-quarters, from 11.2% in 2009 to 2.9% in 2016.

Ratings of Children’s Health Status

- The table below compares children’s health status (as reported by parents/guardians or adult proxy) by select ethnicities.
 - 77.1% (298,198) of Latino children had a reported health status of excellent or very good, compared to 91.9% (239,611) of white children and 85.8% (52,702) of non-

Vietnamese Asian/Pacific Islander children; 55.2% (24,055) of Vietnamese children had a reported health status of excellent/very good.

- 5.4% (20,979) of Hispanic/Latino children had a reported health status of fair or poor, compared to only 1.6% (4,116) of white children.
- In addition to asking about parents' perception of their child's weight, data on children's height and weight were also collected to calculate BMI scores.
- The scores were then plotted on the CDC BMI-for-age growth charts to obtain a percentile ranking that indicates the BMI-for-age weight status category.

The table below presents the BMI-for-age weight status categories for Hispanic children in Orange County.

BMI-for-Age Weight Status Categories for Orange County Hispanic/Latino Children (Ages 3 to 17): Orange County Health Needs Assessment (OCHNA) 2007		
Weight Status	Percent	Population Estimate
Underweight	7.6%	17,834
Healthy/ Normal Weight	56.8%	132,723
Overweight	14.4%	33,714
Obese	21.2%	49,461
Total	100%	233,731

- Over one in three (35.6% or 83,175) Hispanic/Latino children was overweight or obese.
- 30.5% (58,318) of Hispanic children who were reported to be about the right weight had a BMI-for-age weight status category of overweight or obese.
- The Leadership for Healthy Communities (LHC) found that Latino children and adolescents suffer disproportionately from overweight and obesity.
 - This places them at increased risk of developing chronic diseases such as type 2 diabetes, asthma, cardiovascular disease, and sleep apnea.
 - Multiple factors contribute to the high rates of overweight and obesity among Latino children, including the following: lack of access to affordable and healthful food choices in their neighborhoods and schools, poor eating habits, and too much time spent watching television.

Access to Mental Health Coverage and Care

- 38.4% (223,357) of Hispanic/Latino adults are without mental health care coverage; however, even with coverage, some Hispanic/Latino adults may be unlikely to utilize mental health services.

- In 2010, the American Psychiatric Association study found that less than 1 in 11 Hispanic/Latinos with a mental health issue seek out services from mental health specialists.
 - The American Psychiatric Association noted that many Latinos mistake depression for nervousness, tiredness, or even a physical ailment, dismissing the depression as a temporary condition and not seeking out needed mental health services; this attitude about mental issues creates a barrier to seeking care.
- While financial costs and lack of mental health coverage play a role in the underutilization of mental health services for this group, language and culture affect utilization as well.
- 2009 ACS data shows that 29.8% (227,497) of Spanish-speaking individuals in Orange County ages 5 and over do not speak English well or at all. Language barriers impact how services are delivered and received.

b) Access to Dental Care

Dental Coverage

- According to the American Dental Association, children are not the only ones susceptible to tooth decay; adults of all ages can be vulnerable too.
- Adults are more likely to have decay around older fillings, and may have more fillings if they had grown up without the benefits of fluoride.
- The American Dental Association's recommendation that adults receive dental visits and check-ups every six months have become even more critical as adults today are more likely than previous generations to keep their natural teeth.
- Dental coverage can help offset the costs associated with preventative care, which helps detect early signs of oral health problems, prevent further damage, and, in some cases, reverse oral problems.
- Latinos in California have poorer oral health and less access to dental services than any other ethnic group in the state, according to findings from the Bi-national Oral Health Task Force, which was developed in 2006 to work towards expanding access to dental services for Hispanic adults and children in both California and Mexico.
- The Task Force found several primary barriers to oral health care access for Latinos:
 - Lack of Dental Health Coverage: Lack of basic dental coverage is an impediment to good oral health for many Hispanic/Latino adults. However, even with basic coverage, many low-income individuals may still not be able to afford the high out-of-pocket

deductibles and co-pays for dental services and, thus, may forego needed services altogether.

- Lack of Diversity and Cultural Competency among Dental Providers: There are few Hispanic or culturally competent dental providers in California who can communicate important oral health information to Latinos in a meaningful and culturally sensitive way.
 - Lack of Language Ability: Only 2% of non-Latino dentists speak Spanish, and only 33% of Latino dentists in California speak Spanish. The paucity of Spanish-speaking dentists creates a language barrier for Latinos who don't speak English well.
- Results from the 2007 Orange County Health Needs Assessment show a relationship between income and dental health coverage, with lower incomes related to lower rates of coverage (Chi-square=104.0, p <0.001). Three-quarters (74.8% or 67,714) of Latino adults with household income of less than \$25,000 did not have dental health coverage, compared to 10.7% (24,585) of Latino adults with annual household income of \$75,000 or more.

c) Access to Prenatal Care

- ✓ 51 WIC participants
- ✓ 14.61 (per 1000) births

*** In 2009, there was an estimate of between 500-1300 births in Orange County.

The percent of births that received early prenatal care in 2001 was 89% and in 2010 the percent stayed the same at 89%.

For the city of La Habra, most children that were born, their birth weight is as follows:

Less than 1500 grams (Very Low Birth weight)	7 (0.73%)
1500 to 2499 grams (Low Birth weight)	49 (5.14%)
More than 2500 grams	897 (94.12%)
Unknown Weight	0 (0.00%)
Total	95300.00%

- Orange County's 2016 rate of women receiving early prenatal care was 84.4% – greater than the United States (77.1%).
- In Orange County, the percent of women receiving early prenatal care decreased 4.1% since 2007, dropping from 88.0% in 2007 to 84.4% in 2016.4 However, this decrease is correlated with an increase in self-pay deliveries that began in 2014.
 - Self-pay deliveries are those paid through cash payment rather than health insurance and are often associated with foreign visitors that travel to the U.S. to give birth. These women generally arrive in the U.S. late in their pregnancy and

leave shortly after giving birth; therefore, these births typically have no recorded prenatal care. In 2016, there were 3,602 self-pay deliveries in Orange County, an increase from 859 in 2007. Nearly 85% of self-pay deliveries in 2016 were among Asian women.

- When self-pay deliveries are excluded, the percent of women who received early prenatal care in Orange County in 2016 is 87.6%. While this still results in a lower rate than 2007 (88.1%), it reflects a more stable pattern.

d) Teen Births

There were 101 births for mothers less than 20 years of age. Over the past decade (2001 to 2010), the proportion of teen births in Orange County has declined from 7.2% to 6.5%, while the teen birth rate has declined from 34.9 per 1,000 to 21.4 per 1,000. California's overall teen birth rate, while higher than Orange County, has experienced a similar decline over the past decade.

The total number of birth in the La Habra is decreasing each year, in

2007	1020 births
2008	970 births
2009	931
2010	867

e) Immunizations

In 2010, 98.2% of the children are up-to-date with vaccinations.

The Percent of children who received a combined series of Immunization coverage by 2 years in 2002 is 71.5% and in 2011, 74.8%.

CalWorks recipients are 1,101 children ages 0-17years.

The percentage of children entering kindergarten with up-to-date immunizations continues to decrease from 89.3% in 2012 to 88.7% in 2013. There are an increasing number of parents who have refused vaccines for their children and have been allowed to enter kindergarten because of the personal belief exemption waiver.

- In 2017, 77.9% of Orange County children entering kindergarten had been adequately immunized (4:3:1 schedule) at their 2nd birthday, lower than the high of 78.9% in 2014.3
- In 2017, 95.7% of Orange County kindergartners had up-to-date immunizations, a 7.9% increase from the 10-year low at 88.7% in 2013, and exceeding the high of 95.5% in 2016. Children attending private schools in Orange County tend to have lower levels of up-to-date immunizations compared to public schools at kindergarten entry (93.0% vs. 96.2%).
- These percent and trends are similar to those among kindergartners throughout California, who were immunized at a rate of 95.1%.

- One school district, comprised of Laguna Beach Unified public schools and private schools in the area, had 88.5% or fewer of kindergartners with up-to-date immunization levels. However, seven school district regions remain below the recommended immunization rate of 95%. This correlates with higher percentages of permanent medical exemptions and conditional enrollments.

f) Childhood Obesity

Percent Normal/Underweight	48.27% (40.05 ~ 56.50)
Percent Overweight	34.15% (29.52 ~ 38.79)
Percent Obese	17.57% (12.06 23.09)

- During the 2016/17 school year, 18.0% (6,600) of Orange County 5th graders tested were classified as obese. This rate has remained steady since 2013/14 at approximately 18% and is lower than California at approximately 21.5% of 5th graders.
- Among race and ethnic groups, Pacific Islander (36.2%) and American Indian (28.2%) 5th graders had the highest percentages of students classified at health risk due to their body composition, followed by Hispanic (26.8%), Black (17.3%), Filipino (13.3%), Asian (9.7%), White (8.5%), and Multiracial (7.3%) 5th graders.
- As of 2013/14, "at health risk due to body composition" is equivalent to or greater than the 95th percentile of BMI, which is considered obese.

g) Food Insecurity

La Habra is the 4th highest district of students receiving free/reduced lunches with 73% of the students are in this category.

h) Breastfeeding

NO Data Available

Free and Reduced Lunch Program

- Data from the *California Department of Education's Educational Demographics Unit* shows that in Orange County, enrollment in the FRL program increased **21.8%** between the school years of 2000/01 and 2009/10 (183,524 to 223,546).
- The total proportion of children receiving free or reduced lunch also increased from **36.9%** in 2000/01 to **45.0%** in 2009/10.

The table below lists the top five school districts with the highest number of FRL enrollments for years 2007/08, 2008/09, and 2009/10.

Top 5 O.C. School Districts with the Highest Enrollment in the Free and Reduced Lunch Program (Three Year Comparison), 2007-2010			
School District	2007-2008	2008-2009	2009-2010
Anaheim City	81.4%	82.0%	86.5%
Santa Ana Unified	80.3%	83.1%	83.6%
Magnolia Elementary	79.0%	72.8%	79.5%
La Habra City Elementary	68.1%	68.9%	72.8%
Buena Park Elementary	59.5%	64.0%	72.8%
Orange County	40.0%	42.3%	45.0%

Population, Language, Health, Nutrition, & Economic Status

The data presented is focused on the Hispanic population in Orange County. In the City of La Habra, majority of the residents are Hispanic/Latino which is the reason the data is focused on this population.

Hispanics are a growing population group in Orange County and comprise large percentages of the total growth seen in the county and the state.

Hispanic/Latino Population Growth in Orange County and California, 1990-2010				
Year	Orange County		California	
	Percent of Total Population	Number of Hispanics	Percent of Total Population	Number of Hispanics
1990	23.4%	564,828	25.8%	7,687,938
2000	30.8%	875,579	32.4%	10,966,556
2010	33.7%	1,012,973	37.6%	14,013,719

Source: U.S. Census Bureau, 2010 Census, 2000 Census, & 1990 Census

- From 2000 to 2010, the Latino population in Orange County experienced a growth of **15.7%**, while the whole county population grew by **5.8%** from 2,846,289 in 2000 to 3,010,232 in 2010.
- Hispanics made up **83.8%** of the growth of the whole county from 2000 to 2010. (From 2000 to 2010, there were 163,943 additional people in Orange County, and 137,394 of them were Hispanic.)
- Because the Hispanic population includes a large percentage of foreign born, many speak English as a second language.
- The inability to speak English well or at all has adverse consequences for accessing health services. According to a study published by the *National Center for Biotechnology Information* (2007), lack of English speaking skills is a barrier to health care access and utilization.

- Language barriers are associated with poorer health education, poorer interpersonal relations between patient and doctor, poor health status, low patient satisfaction, misunderstanding of medication instructions and side effects, and inadequate follow-up care.
- In California, Hispanics comprise **38.0%** of the population, yet only **5.0%** of the state's physicians were Hispanic or Latino, according to a 2008 study by the *Center for California Health Workforce Studies at the University of California, San Francisco*. Because there are disproportionately few Latino physicians, adequate access to health care resources for the linguistically isolated would require health care providers and service delivery systems to provide proper translation services.
- **Four out of five (79.7%** or 823,647) Hispanics in Orange County were under the age of 45. In comparison, **63.7%** (1,928,106) of all individuals in the county were under 45 years of age in 2009.
- Hispanics had disproportionally low levels of academic achievement compared to non-Hispanic whites and the Orange County population ages 25+. **43.4%** (239,306) of Hispanics ages 25+ have less than a high school-level education, compared to only **4.2%** (42,883) of whites. Only **11.2%** (61,431) of Hispanics had a Bachelor's degree, compared to **43.2%** (439,475) of whites.
- Overall, Hispanics have lower annual household income when compared to the county. In 2009, the median household income of Hispanics was **\$56,457**; the median household income in Orange County was **\$71,865** (2009 ACS). The per capita income for Hispanics in Orange County was **\$16,215** in 2009; the per capita income for all individuals in Orange County was **\$32,282**.

The table below presents the distribution of annual household income in the county, comparing whites and Hispanics in the county by the race of the householder.

Comparison of Annual Household Income of Whites and Hispanics/Latinos by the Race of the Householder, 2009			
	Hispanic/Latino	White, Non-Hispanic	All Orange County
Less than \$25,000	16.8% 37,417	12.8% 72,667	14.6% 142,020
\$25,000 to \$49,999	27.5% 61,223	16.7% 94,485	19.5% 190,420
\$50,000 to \$74,999	21.7% 48,329	16.7% 94,420	17.8% 174,123
\$75,000 to \$99,999	13.7% 30,488	13.9% 78,575	14.0% 136,686
\$100,000 or More	20.3% 45,090	39.9% 225,811	34.1% 332,718
Total	100.0%	100.0%	100.0%

	222,547	565,958	975,967
--	----------------	----------------	----------------

Source: U.S. Census Bureau, 2009 American Community Survey

- A household with 2 adults and 2 teenagers living in Orange County would need **\$49,864**, and if the adolescents were instead preschool-age children, then the household would need **\$74,675** to be self-sufficient, with child care costs for both preschoolers accounting for the difference.
- A comparison of median household income and average household size between Hispanics/Latinos and all Orange County households suggests that it is challenging for many Hispanic/Latino families to lead self-sufficient lives.

i) Children in Foster Care

Children below the age of 6 are in foster care

1. Child Abuse Referral

	ZIP Code: 90631
Age 0-4	2 (18.18%)
Age 5 to 11	4 (36.36%)
Age 12 to 13	2 (18.18%)
Age 14 to 15	0 (0.00%)
Age 16 to 17	3 (27.27%)
Age 18 and Over	0 (0.00%)
Total	11 100.00%

2. Gangs

La Habra had between 100-200 juvenile probation cases in 2010-11.

3. Any other needs of Head Start/EHS eligible children and families within your community

Category	La Habra	Orange County	La Habra relative to Orange County
Number of Household (2010)	19,405	1,039,201	1.9%
Number of Housing Units (2010)	19,973	1,040,544	1.9%
Homeownership Rate	55.2%	57.2%	1.9%
Average Household Size (2010)	3.16	3.06	0.1
Median Family Income (2010)	\$65,412	\$79,132	(\$13,720)
Number of Jobs	19,839	1,755,167	1.1%

(2010)			
--------	--	--	--

(iii) Typical work, school, and training schedules of parents with eligible children;

(iv) Other child development, child care centers, and family child care programs that serve eligible children, including home visiting, publicly funded state and local preschools, and the approximate number of eligible children served;

Within your service area, what other child development and child care programs are serving Head Start/EHS eligible children?

- There are 13 other child care centers that provides care for children, which are either:
 - i. State Pre-School
 - ii. Private For-Profit Preschool
 - iii. There are 26 Family Child Care Homes in the zip code 90631

Approximately how many Head Start/EHS eligible children are served by each of these programs?

- I. 1,284 children are served in a child care facility
- II. 4,286 children are not served in a child care facility

**** Enrollment in public schools is decreasing each year:**

2001-02	6,478
2010-11	5,431
2011-12	5,261
2012-13	5,250
2014-15	5,132

For the 2014-15 school year, ethnicity is broken down as:

Hispanic or Latino of Any Race	4385
American Indian or Alaska Native, Not Hispanic	7
Asian, Not Hispanic	82
Pacific Islander, Not Hispanic	7
Filipino, Not Hispanic	49
African American, Not Hispanic	54
White, not Hispanic	379
Two or More Races, Not Hispanic	48
Not Reported	11
Total:	5,022

- There are a total of 4,356 children ages 0-4 who reside in La Habra.
- There are a total of 1,284 children served in a child care facility within the city of La Habra and there are a total of 4,286 children who are currently not attending a pre-school program. 112 children were enrolled in the TK program for the 2014-15 school year.
- Those children enrolled in a program may be attending a private for-profit pre-school or a Family Child Care Home.

Below is the number of Head Start and Early Head Start eligible children:

Early Head Start					
City	100% of Poverty Level 2010	100% of Poverty Level 2011	100% of Poverty Level 2012	100% of Poverty Level 2013	100% Poverty Level 2014
La Habra	307	521	501	487	646

In Orange County, the total numbers of children eligible for services for 2013-14 are as follows:

	California State Pre-K	Title I	General Child Care and Development	General Child Care (CCTR) and CA State Preschool	Cal-SAFE	CalWORKS Child Care	Rancho Santiago College District	Private Funding	Totals
Number of Sites	118	7	49	14	2		1	1	192
Services for EHS Eligible Children	24		234	99	50	571	140	1	1118
Services for Head Start Eligible Children	6,552	480	208	623		1,460		24	9,344

- The overall state of preschool funding is better this year than in the past years. The state of California increased preschool funding by more than \$250 million for this upcoming fiscal year. But, there is a lack of facilities to be able to serve more pre-school children. Preschool slots increased from approximately 10,318 to 11,306
- The greatest need in Orange County is for Infant and Toddler programs.
 - Shortage or ability to license facilities for child development programs, especially in the communities where the most eligible families are living.
 - For 88% of working families that need care in order to work, there is no licensed care available.

(v) Resources that are available in the community to address the needs of eligible children and their families; and,

- ✚ La Habra Child Development Center (Family Child Care, State Pre Part Day, Full Day)
- ✚ La Habra Resource Center
- ✚ Gary Center
- ✚ La Habra Community Services
- ✚ La Habra Children’s Museum
- ✚ La Habra Community Resource Care Center – rental assistance
- ✚ La Habra Collaborative
- ✚ Orange County Youth Center
- ✚ WIC
- ✚ Orange County Read Program
- ✚ Las Lomas, Washington Middle School, Las Positas
- ✚ Adult Ed in Fullerton, Fullerton College Adult Continuation Class
- ✚ ROP (North Orange County Regional Occupational Program)
- ✚ Friends of Family Health Center
- ✚ St. Jude Mobile Clinic
- ✚ Friends of Family Dental Clinic
- ✚ Friends of Family Health Center
- ✚ St. Jude
- ✚ La Habra Life Center
- ✚ Ameriwest
- ✚ Orange Co. Mental Health Center
- ✚ La Habra Family Resource Center
- ✚ Western Youth Services
- ✚ Rosa Santoyo (Mental Health Consultant)

(vi) Strengths of the community.

- ✚ Collaborations with other agencies.

Approved By: _____
Commission Approval Date: _____
PC Approval Date: _____

Sources:

www.CDE.CA.GOV/ds/

www.lacity.com – *Demographics Information*

United States Census Bureau, U.S. Department of Commerce, American Community Survey, <http://factfinder2.census.gov>
(Table B17001-Poverty Status in the Past 12 Months by Sex by Age, Five Year Estimates)

California Department of Public Health, Birth Records, California Birth Profiles by Zip Code,
<http://www.cdph.ca.gov/data/statistics/Pages/BirthProfilesbyZIPCode.aspx>

California Department of Finance, Birth Projections,
<http://www.dof.ca.gov/research/demographic/reports/projections/view.php>

The Annual Report on the Conditions of Children in OC, www.ocalthinfo.com/csoc/report

Dataquest California Department of Education, www.cde.ca.gov/ds/sd/cb/dataquest.asp
www.kidsdata.org

The Orange County Community Indicators Report, www.ocgov.com/ceocommunity.asp

The Orange County Workforce Indicators Report, <http://www.ocbc.org/research/workforce-indicators-report/>

Orange County Homeless Count & Survey Report, <http://www.pointintimeoc.org/>

Children & Families Commission of Orange County, <http://www.occhildrenandfamilies.com>

Orange County Department of Education, <http://www.ocde.us/MV/Documents/>

Early Development Index, The Children and Families Commission of Orange County

Regional Center of Orange County

Healthy Smiles for Kids of Orange County

www.OCHealthierTogether.org

ONGOING INTERNAL MONITORING REPORT

ATTACHMENT II

Program Year: 2019-2020, Period I

ONGOING MONITORING RESULTS		CORRECTIVE ACTION PLAN			To Be Completed by Delegate		
Regulation	System or Service Area	Compliance Measure (Description)	Corrective Action Plan	Person(s) Responsible	Timeline for Completion (Date)	Validation Steps	Validation of Completion (Date)
1302.93(a)	Human Resources	The program did not ensure that all staff have a completed Professional Development Plan for each Home-Educator. The PDP on file is more than 12 months old and did not have any updates regarding progress.	<ol style="list-style-type: none"> EHS Coordinator will meet with each Home-Educator to complete or update the Professional Development Plan. Conduct follow-up with the Home-Educator every 6 months to ensure goals are being met or determine if the home-educator needs support. Monitor follow-up and progress. 	EHS Coordinator	February 2020		
1302.47(b)(4)(A)	Human Resources	The program did not ensure that all staff received Standard Precautions training. Staff training was more than 12 months old.	<ol style="list-style-type: none"> Training will be provided at the time of orientation and on a yearly basis before the beginning of the program year (July) 	EHS Coordinator	February 2020		
\$1302.33(a)(1)	Education	ASQ-3 and ASQ:SE – Completed forms were not added correctly, when corrected it did not change outcome.	<ol style="list-style-type: none"> Ensure forms are added correctly and review forms for accuracy. 	Home-Educators EHS Coordinator	As needed		

ONGOING MONITORING RESULTS		CORRECTIVE ACTION PLAN			To Be Completed by Delegate		
Regulation	System or Service Area	Compliance Measure (Description)	Corrective Action Plan	Person(s) Responsible	Timeline for Completion (Date)	Validation Steps	Validation of Completion (Date)
§1302.52(c)	Education	Follow-up not conducted for a child who did not have an Individual Development Plan.	<ol style="list-style-type: none"> 1. Meet with the Home-Educators to ensure each child has a completed IDP. 2. File review to ensure items are completed, if item is missing inform the appropriate home-educator to complete. 	CD Manager EHS Coordinator	February 2020 Monthly		

Approved By: _____
Community Service Commission (Sub-Board): _____
Parent Committee: _____