



121 East Whittier Blvd

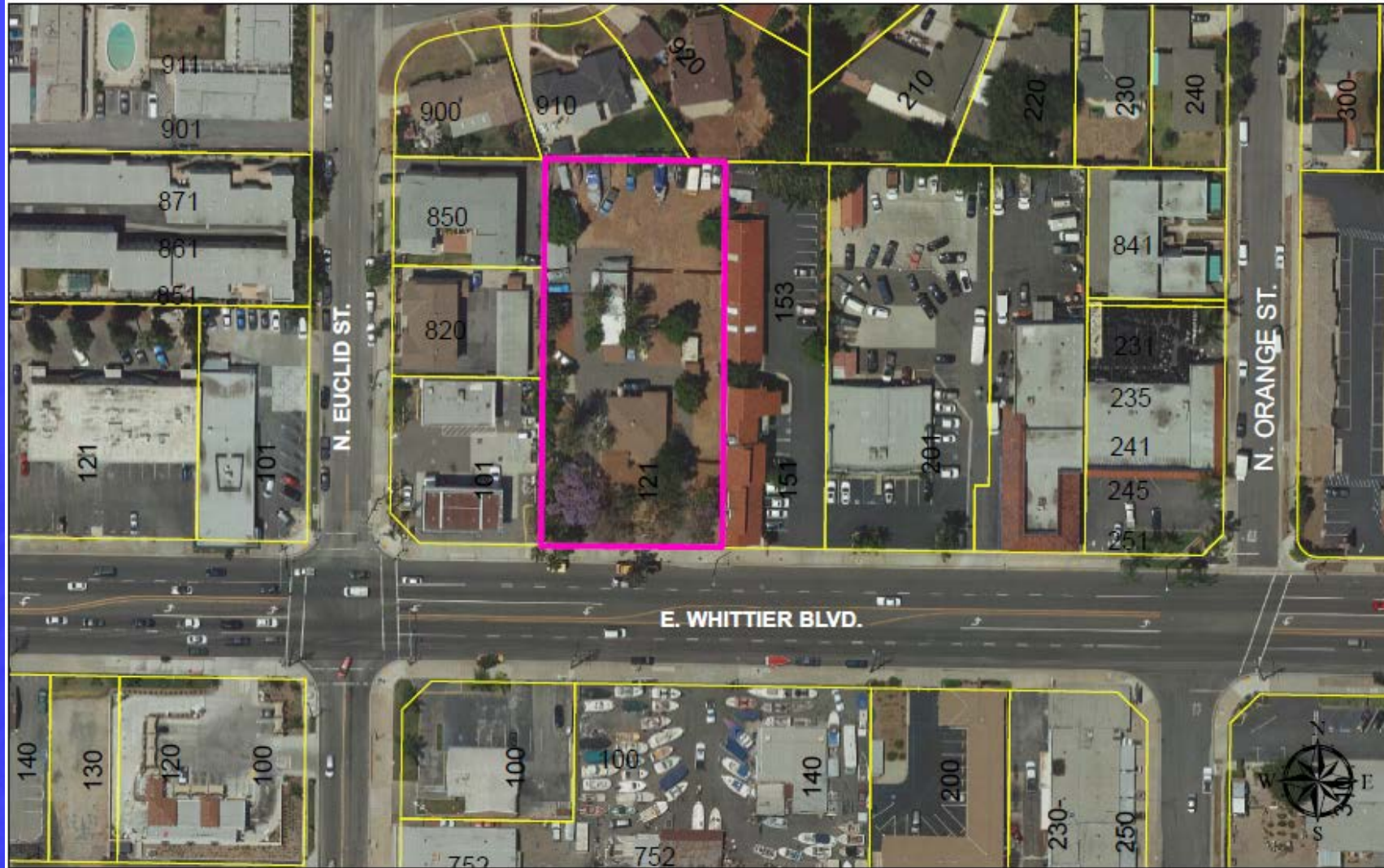
December 14, 2020

Public Hearings

- CONSIDERATION OF DESIGN REVIEW 20-04 TO CONSTRUCT A SINGLE-STORY 10,000 SQUARE-FOOT COMMERCIAL BUILDING AT 121 EAST WHITTIER BOULEVARD



Vicinity Map

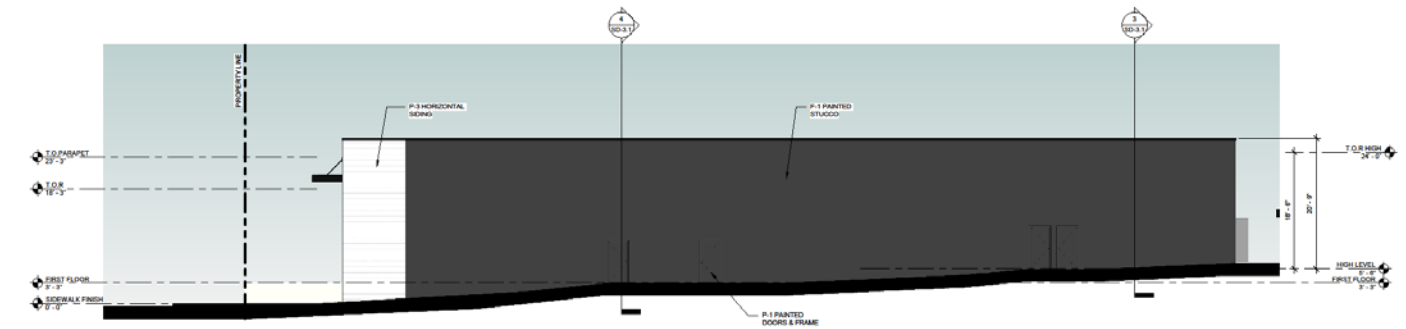


121 E. Whittier Blvd.

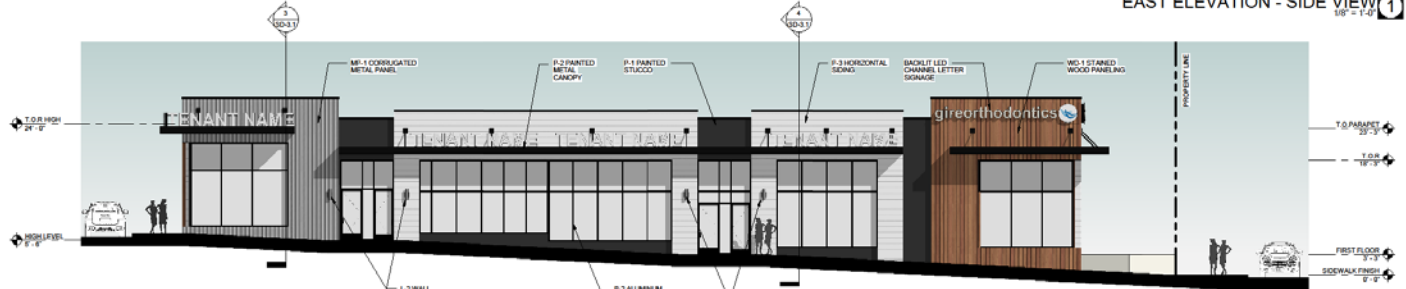
Site Photo



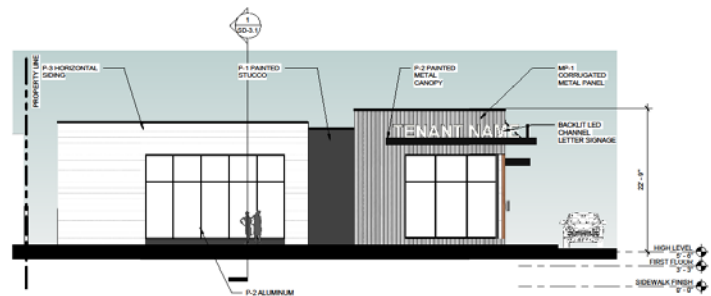
Elevations



EAST ELEVATION - SIDE VIEW 1
1/8" = 1'-0"



WEST ELEVATION - SIDE VIEW 4
1/8" = 1'-0"



NORTH ELEVATION - REAR VIEW 2
1/8" = 1'-0"



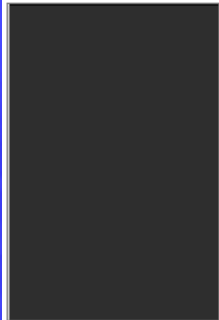
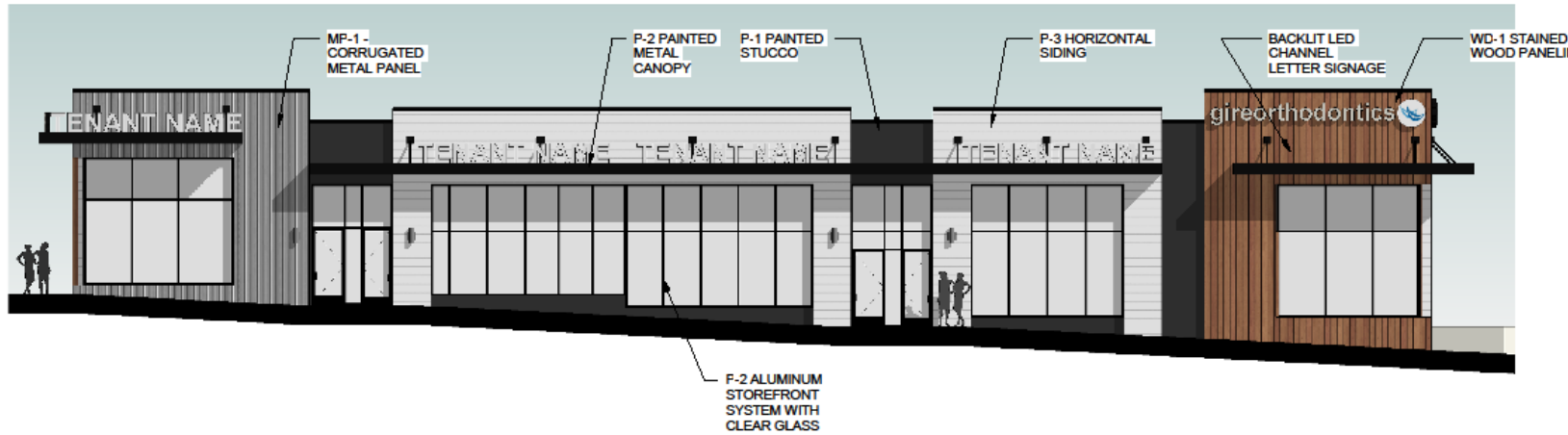
SOUTH ELEVATION - STREET VIEW 3
1/8" = 1'-0"

J2 ARCHITECTS
13008 Philadelphia Street, Suite 508
Whittier, CA 90601 T: 562.522.0056

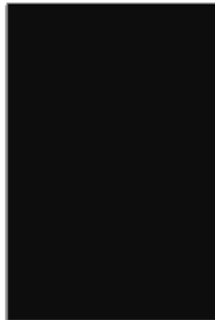
NEW DENTAL OFFICE
121 E. WHITTIER BLVD., LA HABRA, CA 90631

EXTERIOR ELEVATIONS SD-3.0
1/8" = 1'-0" 11.16.2020

Colors & Materials



P-1 - PAINTED SMOOTH STUCCO
COLOR: METAL FRIDGE DET626



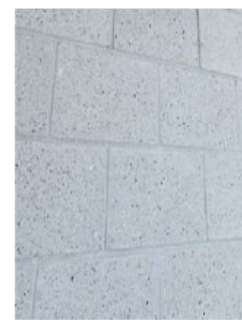
P-2 - ALUMINUM STOREFRONT SYSTEM, METAL CANOPY, ROOF TRIM
COLOR: BLACK DEA187



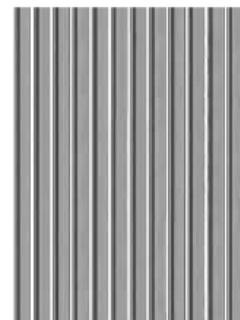
P-3 - HORIZONTAL SIDING
COLOR: IGLOO DEW379



WD-1 - STAINED WOOD PANELING



CMU-1 - MASONRY SITE WALL
WHITE BURNISH BLOCK 8x8x16



MP-1 - CORRUGATED METAL PANEL



L-2 - COOPER LANTERNA 9004 LED, WALL MOUNTED CYLINDER, CLEAR ANODIZED ALUMINUM

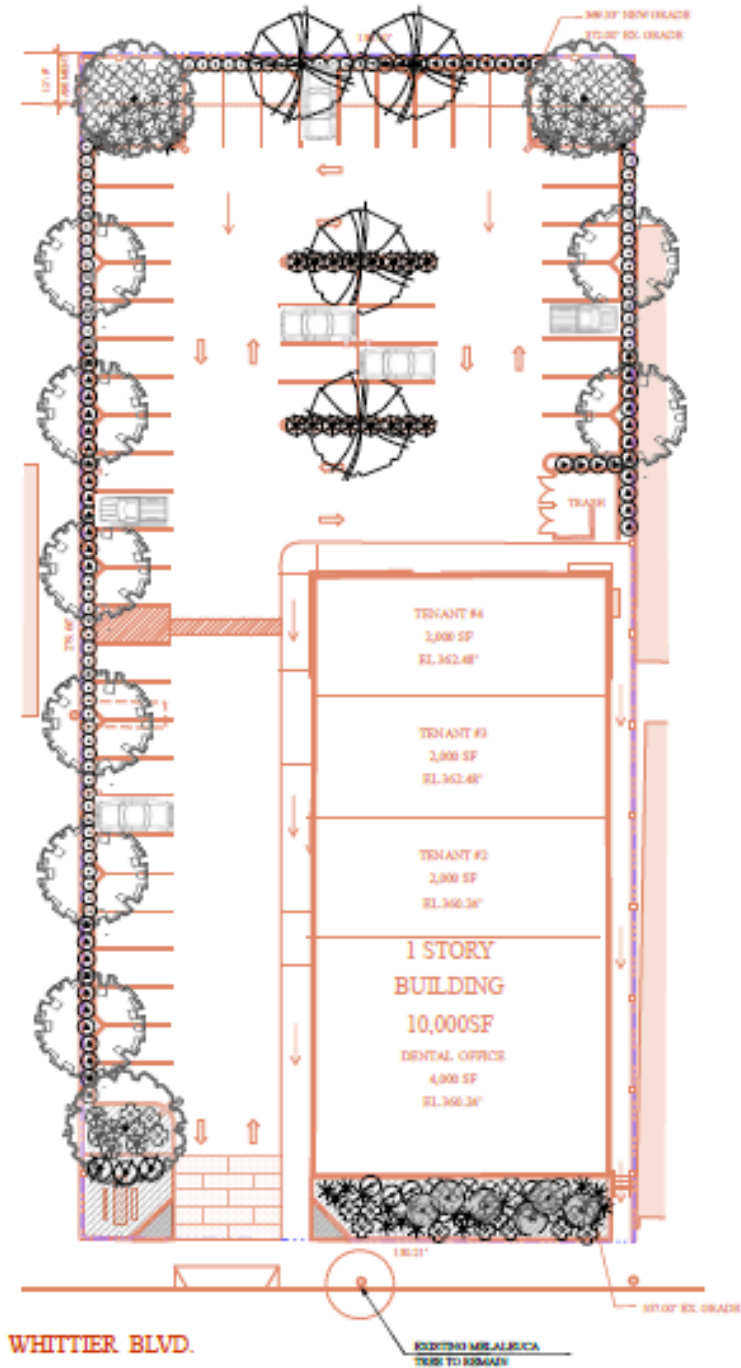
MATERIAL BOARD

J2 ARCHITECTS
13008 Philadelphia Street, Suite 506
Whittier, CA 90601 T. 562.522.0056

NEW DENTAL OFFICE
121 E. WHITTIER BLVD., LA HABRA, CA 90631

SHEET M1
As indicated 11.16.2020

Landscaping



Recommendation

A RESOLUTION OF THE PLANNING COMMISSION OF THE CITY OF LA HABRA APPROVING DESIGN REVIEW 20-04 TO CONSTRUCT A SINGLE-STORY 10,000 SQUARE-FOOT COMMERCIAL BUILDING AT 121 EAST WHITTIER BOULEVARD, MAKING THE APPROPRIATE FINDINGS AND SUBJECT TO CONDITIONS.