

Vista Grande Park Update

50% Plan set for the Design of the New Vista Grande Park

Overview

- ▶ Vista Grande Park
 - ▶ Current Status
 - ▶ Landfill Final Cap
 - ▶ Landfill Methane Gas Mitigation System Expansion
 - ▶ Park Design Plans
 - ▶ Plant and Tree Selection
 - ▶ Park Amenities
 - ▶ Cost and Funding Estimate

Current Status

- ▶ Landfill Final Cover and Landfill Gas System Expansion Project
 - ▶ Design and geotechnical components of the project are complete
 - ▶ Permit level design and landfill gas system final design are 60% complete
 - ▶ Construction for this project phase is expected to begin in October 2021
- ▶ Vista Grande Park
 - ▶ 50% design has been completed.

Landfill Final Cap

▶ Existing Cap

- ▶ The La Habra Disposal Site #11 operated as a sanitation district landfill until 1948, then as a county landfill until closure in 1958. The final cap installed at that time was 3 feet of soil over the refuse.
- ▶ Since closure, the original cap has eroded to 1 foot in some locations. Repair is required.

▶ New Cap

- ▶ The new landfill cap as designed will consist of a minimum soil cover of 3.5 feet. No concrete will be used to cap the landfill other than roads or amenities built as part of the new park.
- ▶ A new drainage system will be built to direct all rainwater to a drainage basin for filtration and release into Coyote Creek Channel.

Landfill Gas System Expansion

- ▶ Existing Landfill Gas System Components
 - ▶ Main Enclosure
 - ▶ This equipment removes landfill gas through the header pipe, treating it for release as permitted by law.
 - ▶ Condensate Pump
 - ▶ This pump removes liquid from pipes and places into a holding tank for later treatment.
 - ▶ Header Pipe
 - ▶ The main pipe that connects all gas extraction wells on site to the main enclosure.
 - ▶ Monitoring Probes
 - ▶ 22 probes are currently used for testing purposes and monitoring of methane.
 - ▶ Landfill Gas Wells
 - ▶ 12 landfill gas extraction wells are on site to extract landfill gas, ranging in depth (6 ft - 39 ft).



Landfill Gas System Expansion

- ▶ New Landfill Gas System Components
 - ▶ Main Enclosure / Condensate Pump
 - ▶ The existing treatment system will not be changed.
 - ▶ Header Pipe
 - ▶ Due to park grading, 160 feet of pipe will need to be removed and relocated.
 - ▶ Monitoring Probes
 - ▶ The existing system of probes will not be changed.
 - ▶ Landfill Gas Wells
 - ▶ Of the 12 wells on site, 3 will be modified. No new wells will be installed. Some well components, such as valves, and sampling ports, will be relocated and new vaults will be built for those that need to be moved.

Park Design

- ▶ Completed design expected in September 2021



Plant Selection

- ▶ The plans show 28 species of California friendly shrubs, which include a number of native California species.



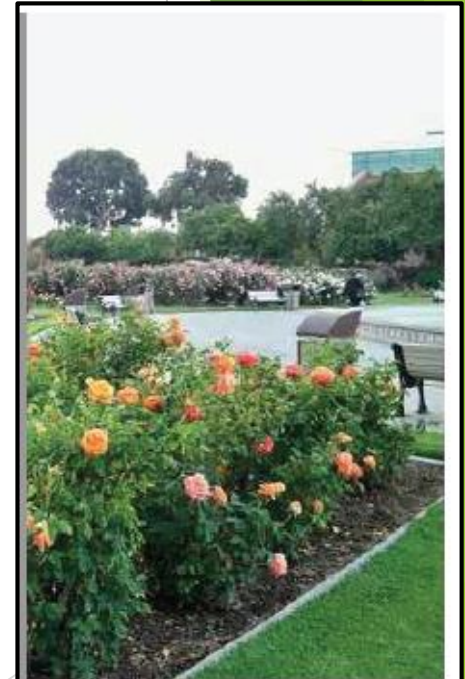
Galvezia speciosa
Island Snapdragon



Heteromeles arbutifolia
California Toyon



Muhlenbergia rigens
Deer Grass



Rose species

Tree Selection

- ▶ The plans show 7 tree species featuring one California native and 6 California friendly trees.



Pistacia Chinensis

Chinese Pistache



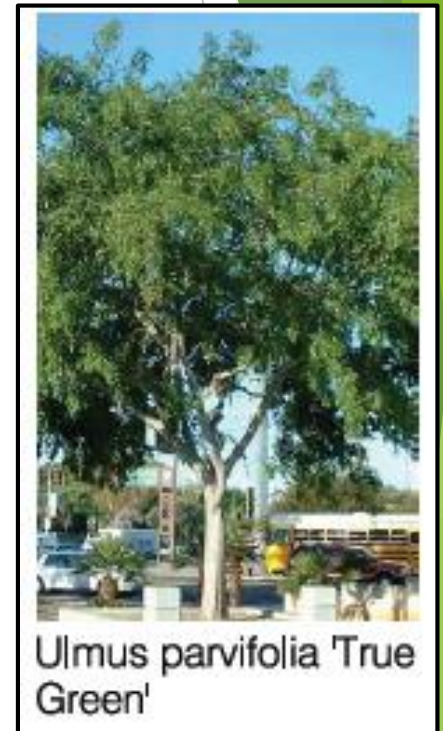
Platnus Racemosa

California Sycamore



Koelreuteria bipinnata

Chinese Flame Tree



Ulmus parvifolia 'True Green'

True Green Chinese Elm

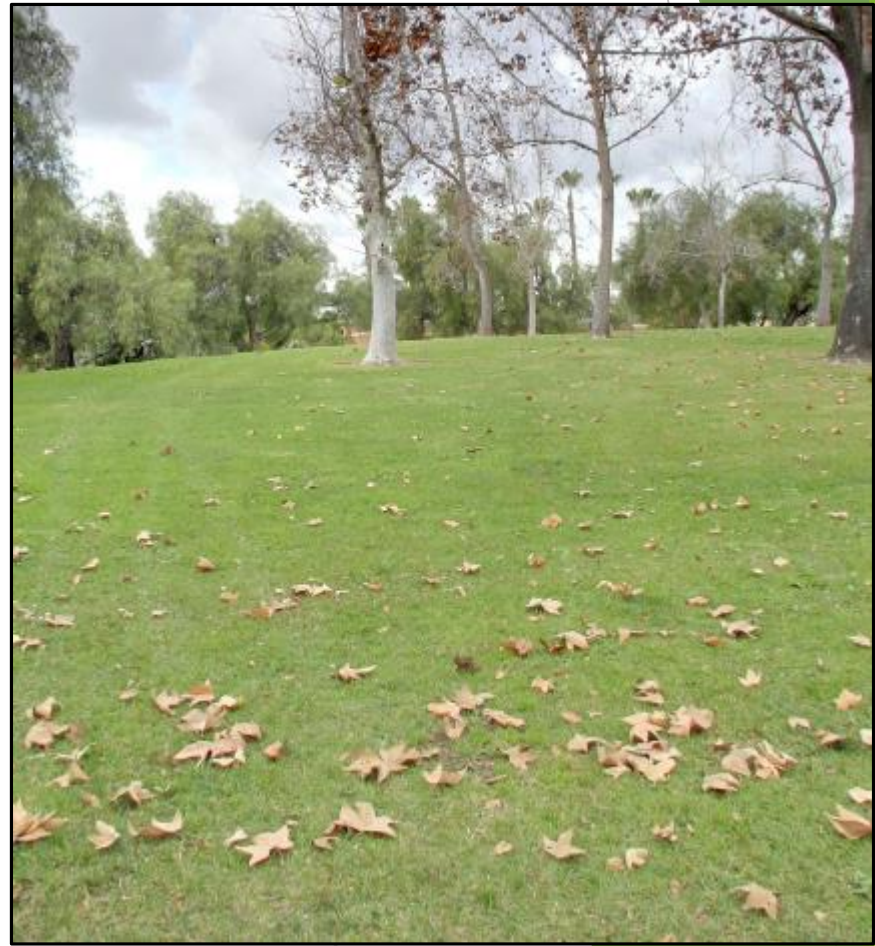
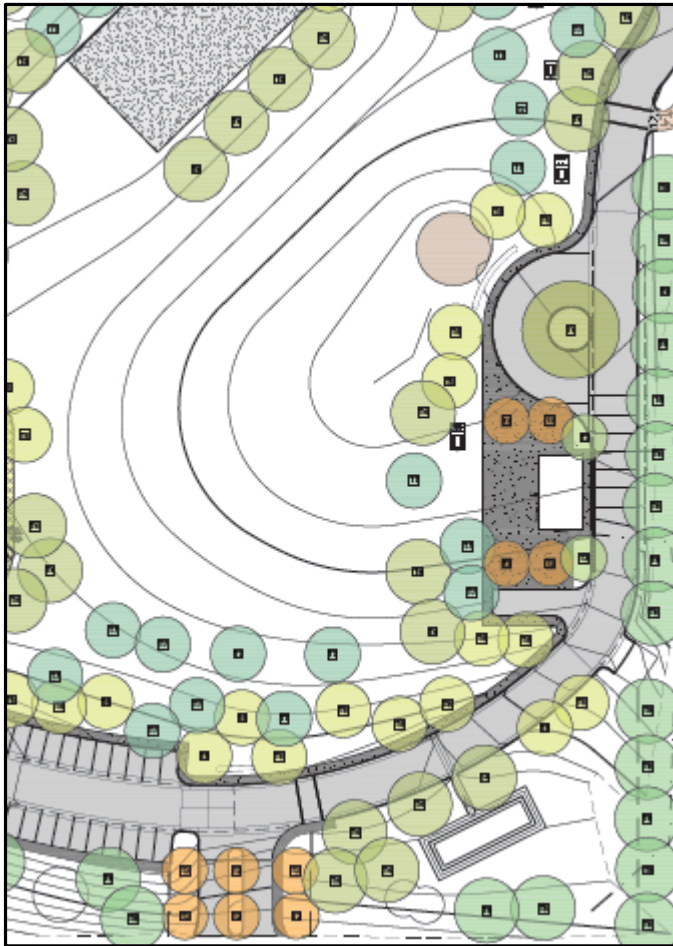
Planned Park Amenities

- ▶ Open Play Fields
- ▶ Walking Running Track
- ▶ Exercise Stations
- ▶ Roads and Parking Areas
- ▶ Universally Accessible Playground
- ▶ Art Wall
- ▶ Food Truck Circle
- ▶ Amphitheater
- ▶ Drought Tolerant Demonstration Garden
- ▶ Gazebo
- ▶ Dog Park
- ▶ Volleyball Court
- ▶ Basketball / Futsal Court
- ▶ Picnic Tables and Benches
- ▶ New Bathroom and Storage Building

Note: Planned park amenities contingent upon receipt of a \$3 million grant from Prop 68. Amenities could be modified or phased if the City does not receive the grant.

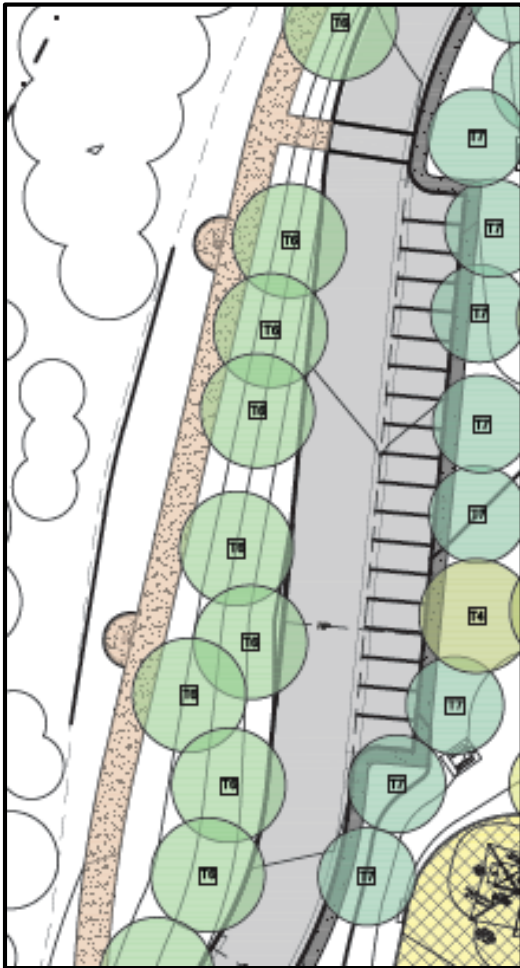
Vista Grande Park - Amenities

► Open Grass Play / Recreation Areas:



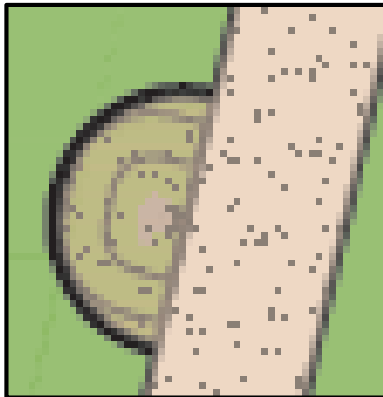
Vista Grande Park - Amenities

► Walking / Running Trails:



Vista Grande Park - Amenities

► Exercise Stations:



Greenfields Outdoor Fitness
Powering Wellness & Fostering Healthy Our Community at a Time!

ADJUSTABLE AB TONER
UBX-211
zerrecOil
Equipped with **SafeStop**

Strengthens:

- Abs
- Lower back

Target muscles:
Secondary muscles

VIEW THE VIDEO

The Greenfields Advantage - It's real!
Incorporate Safe-Stop technology for a workout that's effective and hazard-free.

In order to honor our commitment to quality and safety, Greenfields Outdoor Fitness reserves the right to make changes and revise the design specifications without notice. © 2014 Greenfields Outdoor Fitness

Greenfields Outdoor Fitness
Powering Wellness & Fostering Healthy Our Community at a Time!

ADJUSTABLE ROWER
UBX-290
zerrecOil
Equipped with **SafeStop**

Strengthens:

- Back
- Arms (biceps, forearms)

Target muscles:
Secondary muscles

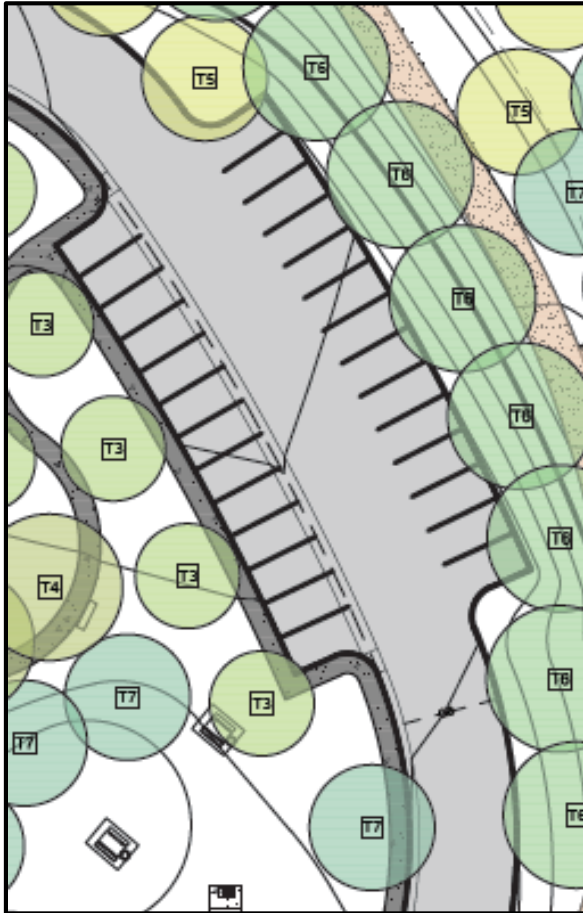
VIEW THE VIDEO

The Greenfields Advantage - It's real!
Incorporate Safe-Stop technology for a workout that's effective and hazard-free.

In order to honor our commitment to quality and safety, Greenfields Outdoor Fitness reserves the right to make changes and revise the design specifications without notice. © 2014 Greenfields Outdoor Fitness

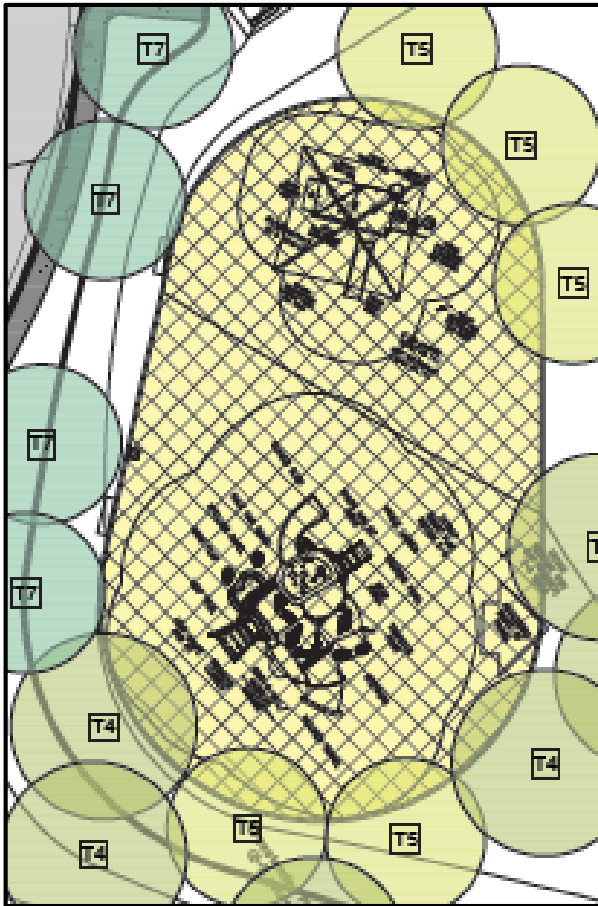
Vista Grande Park - Amenities

► Roads & Parking Areas:



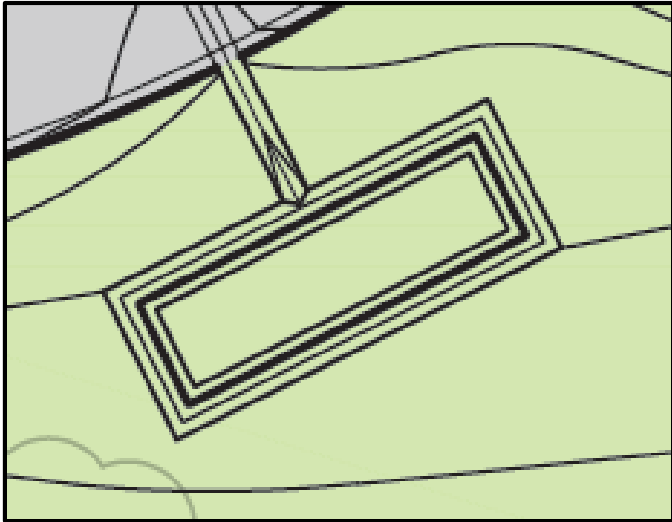
Vista Grande Park - Amenities

► Universally Accessible Playground:



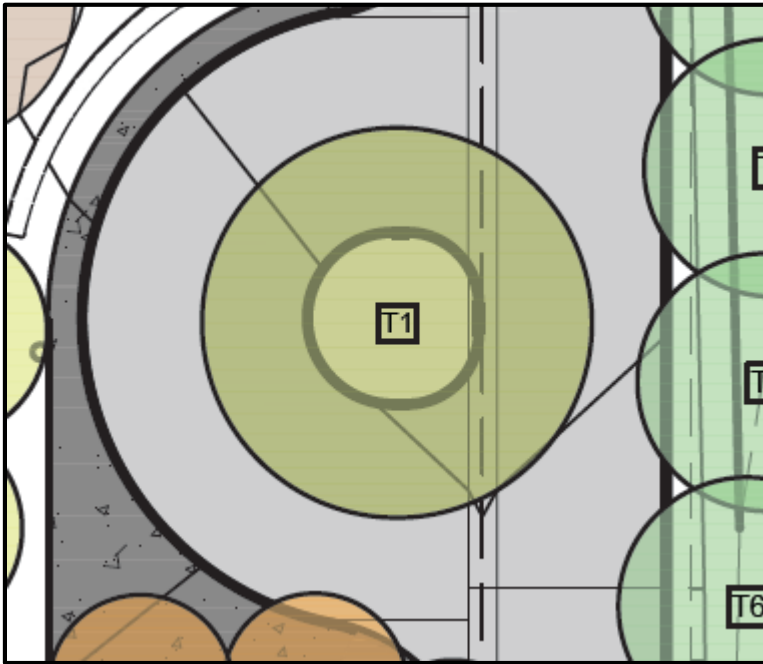
Vista Grande Park - Amenities

► Art Wall:



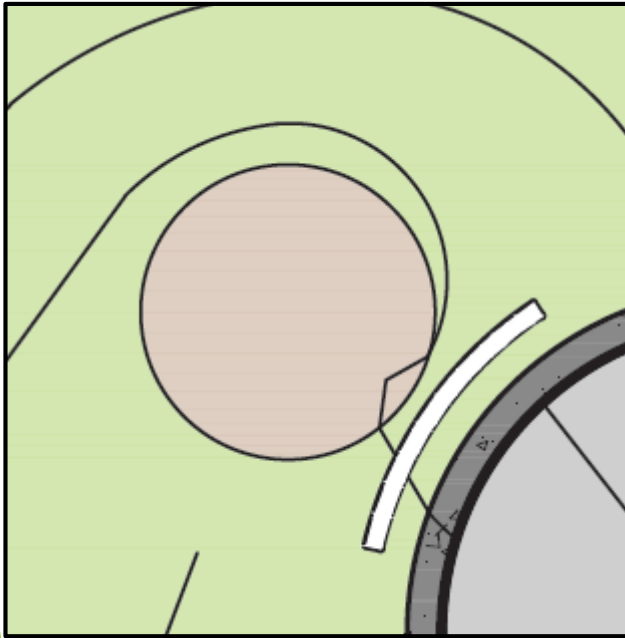
Vista Grande Park - Amenities

► Food Truck Circle:



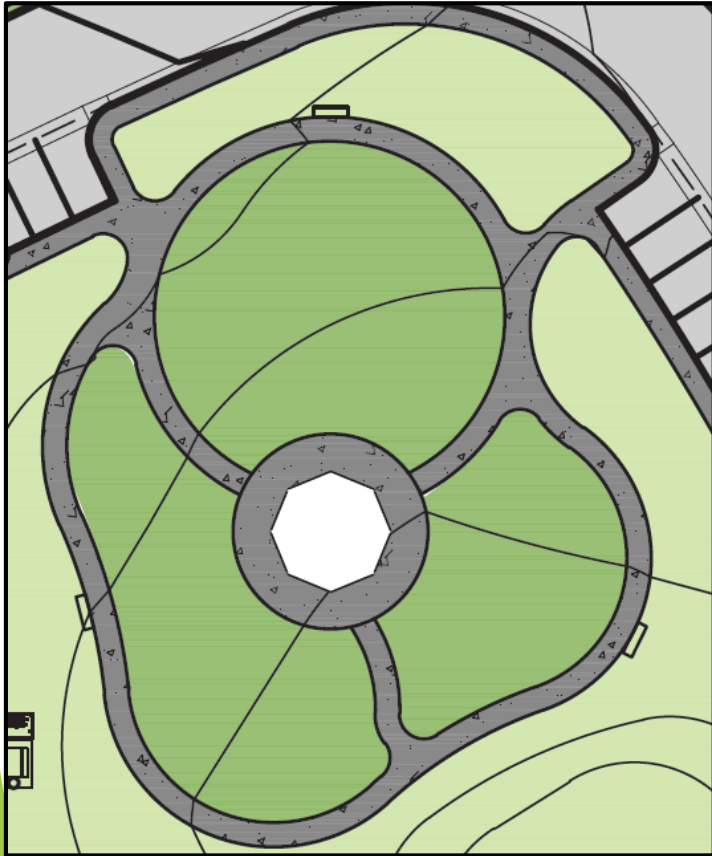
Vista Grande Park - Amenities

► Amphitheater:



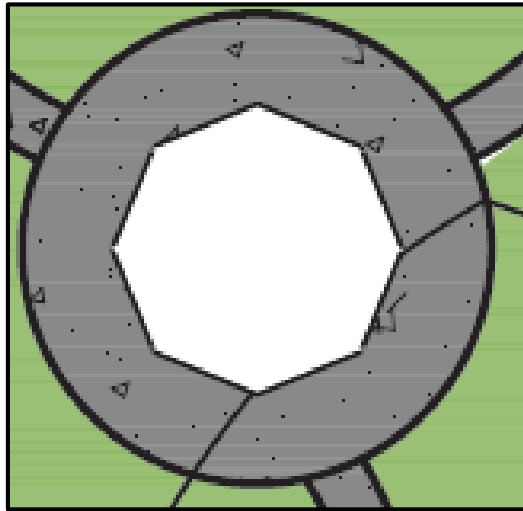
Vista Grande Park - Amenities

- ▶ Drought Tolerant Demonstration Garden:



Vista Grande Park - Amenities

► Gazebo:



Vista Grande Park - Amenities

- ▶ Split Dog Park (Large/Small Dogs):



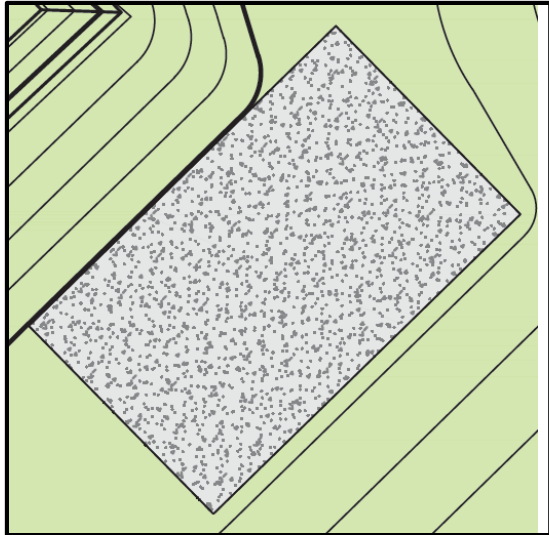
Vista Grande Park - Amenities

► Sand Volleyball Court:



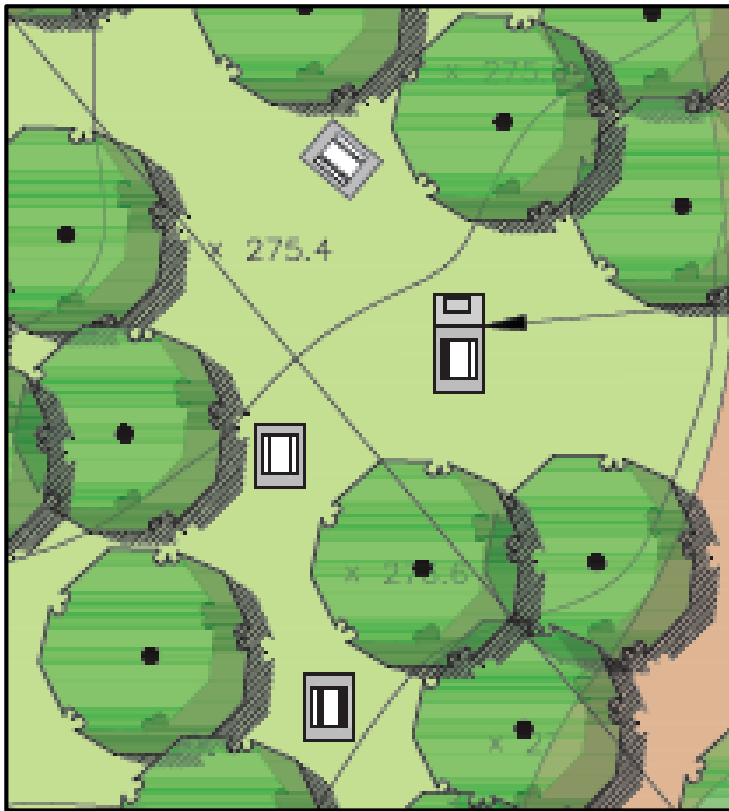
Vista Grande Park - Amenities

► Basketball / Futsal Court:



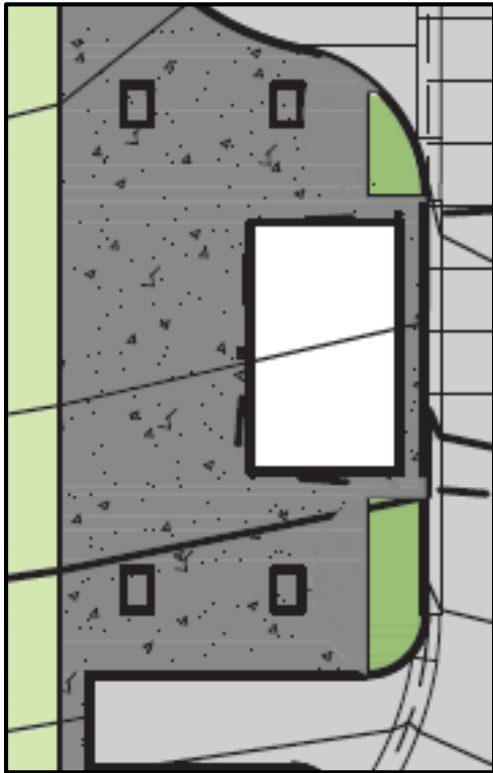
Vista Grande Park - Amenities

- ▶ Picnic Tables, Benches and BBQ's:



Vista Grande Park - Amenities

- ▶ New Bathroom and Storage Building:



Estimated Project Cost

Description	Estimated Cost
Design	\$808,087.44
Demolition / Miscellaneous	\$800,100.00
Amenities	\$3,765,817.75
Landscaping	\$2,168,144.25
Contingency, Bonds, Insurance, other fees	\$1,346,812.40
TOTAL	\$8,888,961.84

Funding Sources

Potential/Secured Funding Sources	Amount
CA Parks - Prop 68 Grant (Pending)	\$3,000,000.00
St. Jude Hospital Grant	\$40,000.00
CalRecycle Legacy Grant	\$750,000.00
Orange County Refuse Settlement funds	\$4,471,198.05
La Habra Water Fund	\$277,763.79
La Habra Park Acquisition Fund	\$100,000.00
La Habra General Fund	\$250,000.00
TOTAL	\$8,888,961.84

Estimated Project Schedule

Project Phase	Start	Finish
Design	February 2019	November 2021
Demolition/Grading	February 2022	May 2022
Final Cap and Gas System Improvements	May 2022	July 2022
Park Construction	July 2022	July 2023
Grand Opening		August 2023