



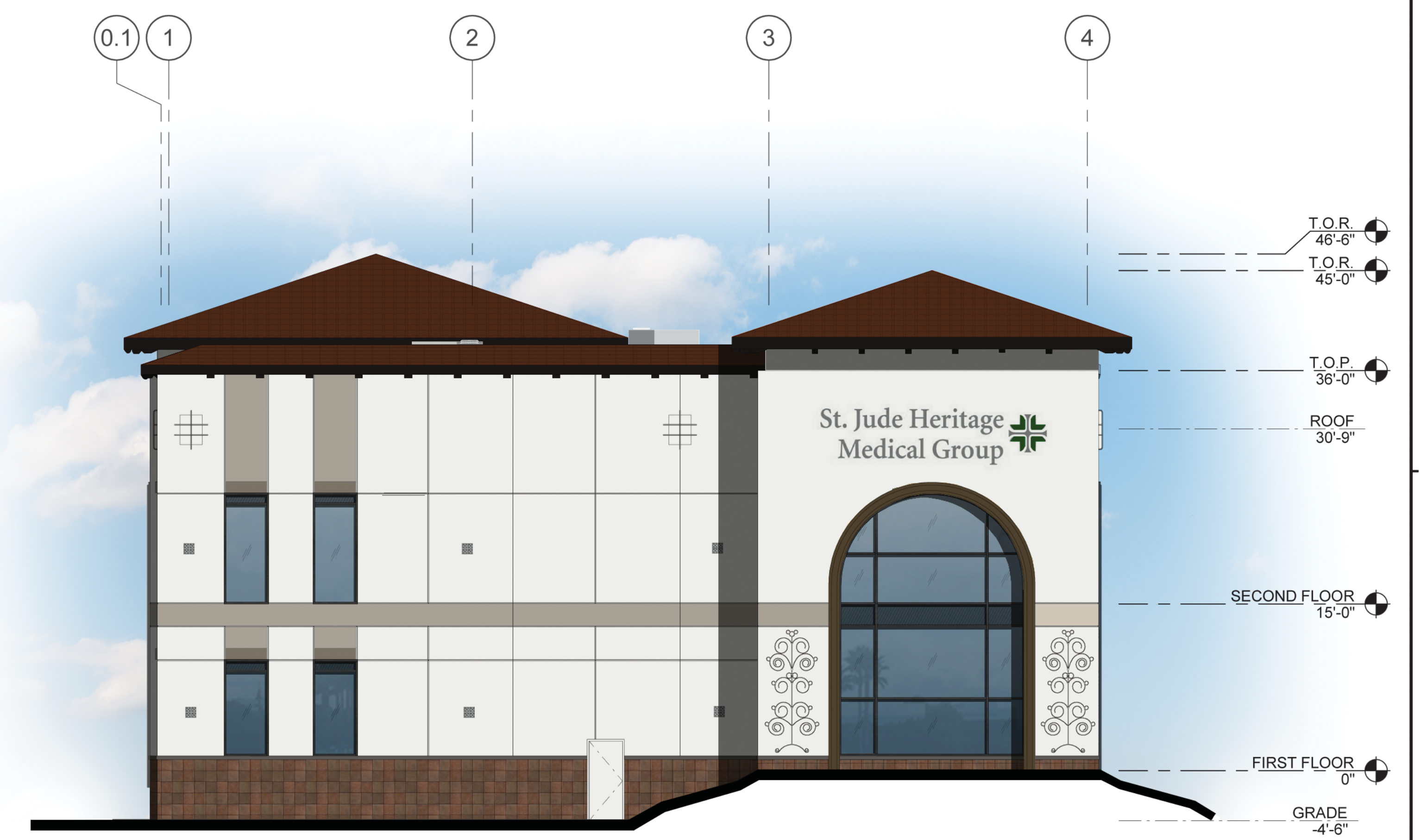
**EAST EXTERIOR ELEVATION** ③  
SCALE: 1/8" = 1'-0"



**NORTH EXTERIOR ELEVATION** ①  
SCALE: 1/8" = 1'-0"  
0 4' 8' 16' 32'



**WEST EXTERIOR ELEVATION** ④  
SCALE: 1/8" = 1'-0"



**SOUTH EXTERIOR ELEVATION** ②  
SCALE: 1/8" = 1'-0"

**LEGEND**

**GLASS:**

- VISION GLASS
- SPANDEL GLASS
- TEMPERED GLASS

ALL GLASS USED ON THE ENVELOPE OF THE BUILDING TO BE:  
XXXXXX  
U FACTOR = 0.28 AND SHGC = 0.28  
GLASS WIND LOAD RESISTANCE CALCULATIONS ARE UNDER SEPARATE PERMIT

**MATERIALS:**

- EXTERIOR SMOOTH PLASTER FINISH WITH INTEGRAL COLOR OVER CMU WALL
- SALTILLO WALL TILE TO MATCH EXISTING SHOPPING CENTER

**COLORS:**

- BASE COLOR: SHERWIN WILLIAMS SW7006 EXTRA WHITE
- SECONDARY COLOR: SHERWIN WILLIAMS SW7036 ACCESSIBLE BEIGE
- ACCENT COLOR: SHERWIN WILLIAMS SW7038 TONY TAUPE
- ACCENT COLOR: SHERWIN WILLIAMS SW2735 ROCKWEED

**KEYNOTES:**

- SEE SHEET A0.2 FOR GENERAL NOTES
- 305 SPANISH TILE ROOF SYSTEM W/ FELT UNDERLAYMENT AND HIGH TEMPERATURE WRB.
  - 307 PACKAGE UNIT ON PREFABRICATED CURB. SEE MECHANICAL DRAWINGS.
  - 402 PLASTER CONTROL JOINT.
  - 405 ALUMINUM (ARCADIA CLEAR ANODIZED) STOREFRONT SYSTEM WITH 1" INSULATED GLASS.
  - 409 FINISH GRADE VARIES.
  - 410 LINE OF ROOF BEYOND.
  - 411 EIFS CORNICE AT PARAPET.
  - 412 EIFS CORNICE AT WINDOW HEAD TO MATCH WIDTH OF WINDOW.
  - 414 EXPOSED SPLIT-FACE CMU FINISH.
  - 413 SMOOTH EXTERIOR PLASTER FINISH OVER GYPSUM SHEATHING OVER METAL STUD.
  - 418 TENANT SIGNAGE (UNDER SEPARATE PERMIT).
  - 419 PRE-CAST CORNICE AT STOREFRONT WINDOW SYSTEM.

**WARE, MALCOLM**  
Leading Design for Commercial Real Estate

architecture  
planning  
graphics  
civil engineering

10 Edleman  
Irvine, CA 92618  
Tel: 949.863.1881  
Fax: 949.863.1881

**HERITAGE LA HABRA**  
**CORE & SHELL**  
1201 W. WHITTIER BLVD.  
LA HABRA, CA 90631

EXTERIOR ELEVATION	
DATE	REMARKS
07/23/2020	PLANNING REVIEW
1	

PA/PM:	A. ZERTUCHE
DRAWN BY:	D. REYNOLDS
JOB NO.:	IRV19-3021-00

SHEET  
**A4.1**