

SPECIALTY EQUIPMENT SCHEDULE - "E"					
DESIGN ID	COUNT	DESCRIPTION	FURN. BY	INST. BY	COMMENTS
COOLING					
10267	3	FRIDGE UNDERCOUNTER 1 DOOR - 27IN 685MM	SB	FC	
12618	1	FRIDGE UNDERCOUNTER 1 DOOR WITH SHELF - 27IN 685MM	SB	FC	
20010	1	FRIDGE NITRO 2 TAP JT NITCOM LH	SB	FC	KIT INCLUDES UNDERCOUNTER FRIDGE, FONT, TRAY, AND TUBING. FC TO COORDINATE CALIBRATION.
EQUIPMENT					
10808	1	GRINDER DITTING KR1203	SB	FC	
12504	1	BREWER AIRPOT TWIN	SB	GC	CORD AND CAP BY GC. FINAL CONNECTIONS BY GC. START UP BY FC
12508	1	BLENDER QUIET MODEL ON COUNTER	SB	FC	
19742	1	ESPRESSO MACHINE MASTRENA II	SB	FC	FC TO COORDINATE CALIBRATION AND START-UP
20032	1	OVEN EIKON E2S - BLACK	SB	FC	
21679	1	NITROGEN GENERATOR ELEMENT COMPACT	SB	FC	
FOOD CASE					
22200	1	FOOD CASE - COUNTERTOP PASTRY ZEPHYR - 28IN 710MM	SB	FC	
ICE					
10344	1	ICE - BIN DROP IN 90LB 40KG	SB	GC	SET IN PLACE BY FC; PLUMBING DRAINS BY GC
10348	1	ICE - BIN B40	SB	GC	SET IN PLACE BY FC; PLUMBING DRAINS BY GC
19494	1	ICE - MACHINE CIM0530HT AIR COOLED TOP VENT	SB	GC	GC TO ATTACH POWER CORDS. FC TO COORDINATE START-UP
OTHER					
10091	1	CUP DISPENSER TALL HOT VERTICAL	SB	FC	
10396	1	CUP DISPENSER SHORT HOT VERTICAL	SB	FC	
10791	2	CUP DISPENSER GRANDE VENTI COLD VERTICAL	SB	FC	
10855	2	CUP DISPENSER GRANDE VENTI HOT VERTICAL	SB	FC	
10858	1	CUP DISPENSER TALL COLD VERTICAL	SB	FC	
10992	1	PAPER TOWEL DISPENSER HALF SIZE - TRANSLUCENT GRAY	SB	FC	
11115	1	SOAP DISPENSER SINK MOUNTED	SB	FC	
13330	1	MOBILE CUP DISPENSER CADDY	SB	FC	
13584	1	CUP DISPENSER TRENTA COLD VERTICAL	SB	FC	
19495	1	NITRO 2 TAP HANDLE AND BADGE KIT	SB	FC	
20079	1	NITRO 2 TAP BADGE MOUNT BACKBAR LH	SB	FC	
20080	1	NITRO 2 TAP BADGE MOUNT BACKBAR RH	SB	FC	
20403	6	KEG - 3GAL	SB	FC	STARBUCKS OPS TO PREPARE (1) KEG COLD BREW AT LEAST 20 HRS PRIOR TO NITRO CALIBRATION

PLUMBING FIXTURE SCHEDULE - "P"					
DESIGN ID	COUNT	DESCRIPTION	FURN. BY	INST. BY	COMMENTS
FAUCET					
10153	1	FAUCET - WATER TOWER - 12IN 305MM	SB	GC	
10215	1	FAUCET - DOUBLE LABORATORY WITH SWING SPOUT	SB	GC	
10597	1	FAUCET - SINGLE HANDLE	SB	GC	
10874	1	FAUCET - INSTAHOT SYSTEM SINGLE LEVER	SB	GC	
11003	1	FAUCET - METERED	SB	GC	
11032	1	FAUCET - DOUBLE JOINTED SWING SPOUT	SB	GC	
FILTER					
12501	1	FILTER - RO SYSTEM 600GPD	SB	FC	STARBUCKS TO COORDINATE FINAL WATER FILTRATION SYSTEM SPECS
13076	1	FILTER - PREFILTRATION SYSTEM	SB	FC	STARBUCKS TO COORDINATE FINAL WATER FILTRATION SYSTEM SPECS
13077	1	FILTER - HEAD SINGLE	SB	FC	STARBUCKS TO COORDINATE FINAL WATER FILTRATION SYSTEM SPECS
13078	1	FILTER - CARBON FILTER CARTRIDGE WITH SCALE REDUCTION	SB	FC	STARBUCKS TO COORDINATE FINAL WATER FILTRATION SYSTEM SPECS
13079	1	FILTER - HEAD TRIPLE	SB	FC	STARBUCKS TO COORDINATE FINAL WATER FILTRATION SYSTEM SPECS
13081	3	FILTER - CARBON FILTER CARTRIDGE	SB	FC	STARBUCKS TO COORDINATE FINAL WATER FILTRATION SYSTEM SPECS
13087	1	FILTER - WATER CONDITIONING CABINET	SB	FC	STARBUCKS TO COORDINATE FINAL WATER FILTRATION SYSTEM SPECS
13149	1	FILTER - PRESSURE GAUGE	SB	FC	STARBUCKS TO COORDINATE FINAL WATER FILTRATION SYSTEM SPECS
OTHER					
13249	1	WATER HEATER TANK ELECTRIC UNDERCOUNTER	GC	GC	LICENSEE TO INFORM STARBUCKS IF WATER HEATER REQUIRED WITHIN SPACE
SINK					
13990	1	SINK - UTENSIL RINSE WITH DRAIN TRAY SST - RH - 21X21IN 535X535MM	SB	GC	
21556	1	SINK - 3 COMP KIOSK TALL SPLASH SST - LH - 96IN 2440MM	SB	GC	INSTALLED BY FC AS PART OF KIOSK; CONNECTIONS BY GC.

DATA DEVICE SCHEDULE - "A"					
DESIGN ID	COUNT	DESCRIPTION	FURN. BY	INST. BY	COMMENTS
POINT OF SALE					
10008	1	POS - REGISTER WITH COMPACT CASH DRAWER	LC	LC	LC TO COORDINATE WITH FC ON SITE REGARDING REQUIRED GROMMET HOLES IN COUNTERTOP
10014	1	POS PRINTER	LC	LC	LC TO COORDINATE WITH FC ON SITE REGARDING REQUIRED GROMMET HOLES IN COUNTERTOP

FLOOR TREATMENT SCHEDULE - "T"					
DESIGN ID	AREA	DESCRIPTION	FURN. BY	INST. BY	COMMENTS
VINYL					
21188	669 SF	VINYL FLOOR TILE - WASHED CONCRETE - IRON - 24X24IN 600X600MM	GC	GC	GC PROVIDED; CONTACT: ALAN ROWELL at (478) 273-1046 OR AROWELL@ASPECTFLOORING.COM; ALLOW 1-2 WEEKS LEAD TIME. INSTALL IN STACK PATTERN.

KEYED NOTES

- KIOSK DATUM POINT.
- END OF STARBUCKS FINISHES.
- STARBUCKS FLOORING TRANSITION. ONLY STARBUCKS MERCHANDISE AND FIXTURES TO BE WITHIN THIS AREA.
- LICENSEE TO PROVIDE EXTERIOR SIGNAGE PLAN TO STARBUCKS DESIGN FOR APPROVAL.
- GC AND LICENSEE TO DETERMINE NEED FOR WATER HEATER AT SITE. FC TO REMOVE (1) U/C CABINET TO ACCOMMODATE WATER HEATER AS NEEDED.
- PLACE MERCHANDISE FIXTURES AND RETAIL FLOOR BASKETS PER PLAN. STORE OPERATORS TO ORDER RETAIL FLOOR BASKETS.
- HAND SINK WITH INTEGRAL SPLASH GUARD.
- FC TO REVERSE HINGE ON U / C REFRIGERATOR TO LEFT HAND SWING AS SHOWN.
- EXISTING CONCRETE CURB TO BE REMOVED.
- INTEGRATED MERCHANDISE BAY/SHELVING.
- INTEGRATED STORAGE BAY WITH ELECTRICAL PANEL.
- ELEC./ PLUMBING SHEETS PROVIDED BY STARBUCKS OR FIXTURE CONTRACTOR.
- AOR TO CONFIRM KIOSK MEETS ALL ORANGE COUNTY CURRENT HEALTH REGULATIONS.
- STRUCTURAL COLUMN; FINISHES BY STARBUCKS.

GENERAL NOTES

- THE SITE IS SERVED BY THE MUNICIPAL WATER AND SEWER SYSTEM UNLESS OTHERWISE NOTED.
- ALL FLOOR AND WALL JUNCTIONS IN STORAGE AND PREP AREAS SHALL HAVE A COVERED BASE.
- ALL FOOD STORAGE SHALL BE AT LEAST 6" AFF.
- ALL WOOD SURFACES (DOORS, TRIM, SHELVES, CABINETS) SHALL BE SEALED.
- FLOORS, WALLS AND CEILING FINISHES IN FOOD PREP AREAS SHALL BE SMOOTH, NON-TOXIC, NON-ABSORBENT, DURABLE AND EASILY CLEANABLE. PAINT SHALL BE WASHABLE AND SEMI-GLOSS OR HIGH-GLOSS FINISH.
- ALL EQUIPMENT AND INSTALLATION WILL MEET NATIONAL SANITATION FOUNDATION STANDARDS OR EQUIVALENT.
- ALL EQUIPMENT AND CABINETRY WILL BE FLUSH MOUNTED TO COUNTERS, WALLS OR FLOORS, OR BE RAISED TO ALLOW FOR CLEANING.
- CONFIRM ALL NECESSARY EQUIPMENT CLEARANCES PER PRODUCT CUT SHEET (E.G. ICE MACHINE).
- FOR LOCATION OF COUNTERTOP EQUIPMENT, REFER TO THE MASTER MEP DRAWINGS.
- EQUIPMENT UNITS SHALL CONTAIN NO EXPOSED THREADS, EMBELLISHMENTS OR OVERHANGING EDGES THAT SERVE AS PLACES FOR ACCUMULATION OF DUST, DIRT AND DEBRIS.
- EACH HAND WASHING SINK WILL HAVE A SINGLE SERVICE TOWEL AND SOAP DISPENSER, AND ALL HAND SINKS TO HAVE A COMBINATION FAUCET OR PREMIXING FAUCET.
- FOR PLUMBING FIXTURES, REFER TO THE MASTER MEP DRAWINGS.
- STARBUCKS STORE DEVELOPMENT TO COORDINATE WATER TEST COLLECTION WITH LICENSEE. FIXTURE CONTRACTOR TO COORDINATE INSTALL OF WATER FILTRATION SYSTEM AS DESIGNED BY PENTAIR.
- ALL FLOORING AND BASE MATERIAL TO BE INSTALLED ACCORDING TO SPECIFICATIONS.
- FLOORING INSIDE KIOSK TO BE SPECIFIED BY ARCHITECT OF RECORD IN ACCORDANCE WITH LOCAL JURISDICTIONAL REQUIREMENTS.

FIXTURE CONTRACTOR

- Contact ICEE to confirm schedule of Nitro equipment calibration minimum 2 week prior to install.
- ICEE contact information:
ICEE scheduling: 1-866-292-4233, option 2 / ICEE-STARBUCKS.com / ICEE-WFS@JJSNACK.com
Request calibration for Nitro 2 Tap Compact unit at Starbucks Store

STARBUCKS STORE DEV

- Notify District Manager of Nitro calibration timing. Obtain contact information for individual supplying cold brew to FC.

OPERATIONS - DISTRICT MANAGER

- Prepare and chill cold brew 20 hours in advance of scheduled Nitro calibration by ICEE.

GENERAL CONTRACTOR

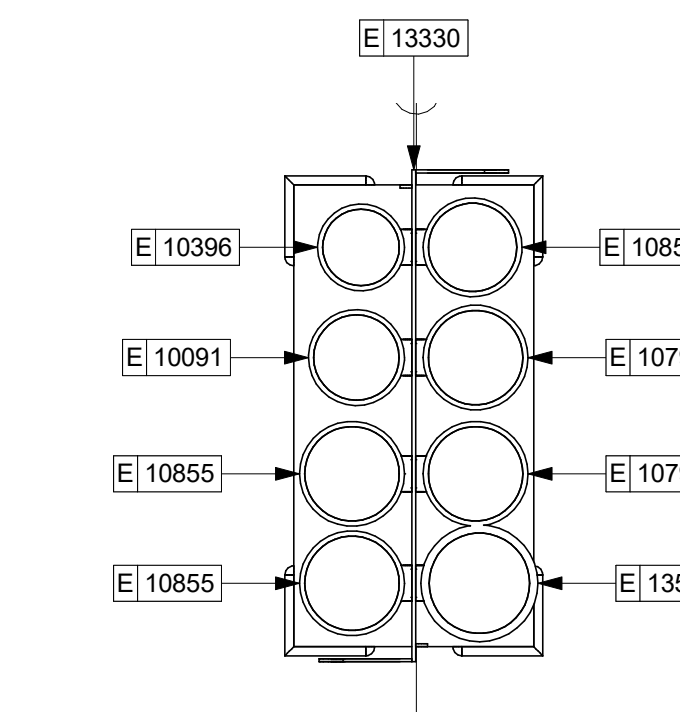
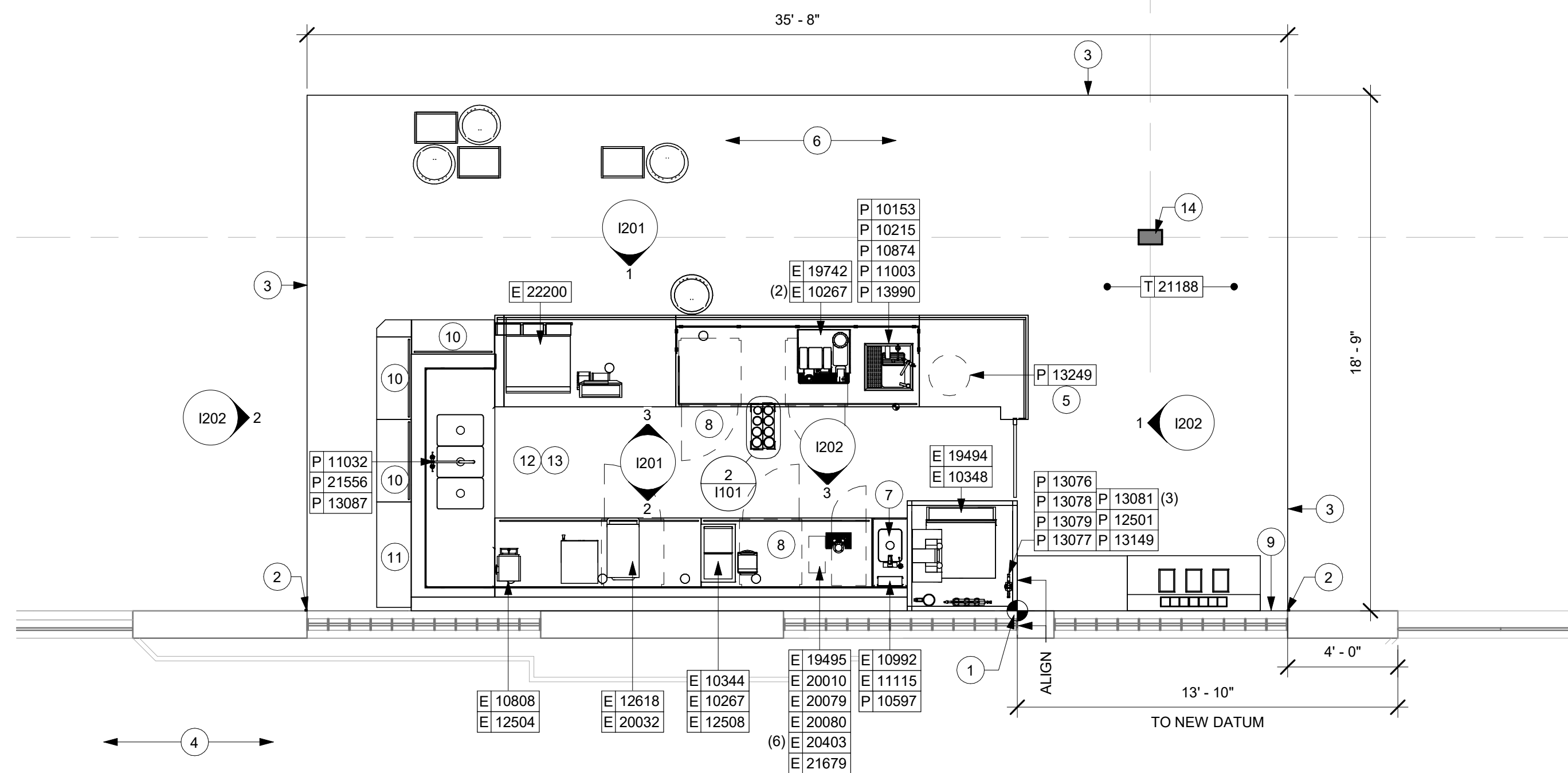
- Prior to scheduled calibration, run plumbing drain lines (as required by AHJ) from drip tray to the floor sink.

ICEE

- Connect gas lines from generator to Nitro refrigerator.
- Connect beverage lines out of refrigerator to font. Connect kegs and calibrate.

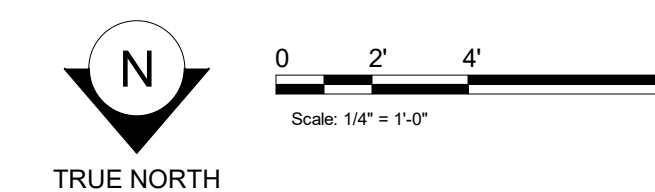
LICENSED STORES RESPONSIBILITY LEGEND

- SB - STARBUCKS
- FC - STARBUCKS FIXTURE CONTRACTOR
- LC - LICENSEE
- GC - LICENSEE'S GENERAL CONTRACTOR



2 ENLARGED CADDY
Scale: 1 1/2" = 1'-0"

1 FURNITURE, FIXTURES, AND EQUIPMENT PLAN
Scale: 1/4" = 1'-0"



DESIGN DEVELOPMENT ONLY - NOT INTENDED FOR CONSTRUCTION USE



STARBUCKS
2401 UTAH AVENUE SOUTH
SEATTLE, WASHINGTON 98134
(206) 318-1575

THESE DRAWINGS AND THE PROJECT MANUAL ARE CONFIDENTIAL AND SHALL REMAIN THE SOLE PROPERTY OF STARBUCKS CORPORATION, WHICH IS THE OWNER OF THE COPYRIGHT IN THIS WORK. THEY SHALL NOT BE REPRODUCED (IN WHOLE OR IN PART), SHARED WITH THIRD PARTIES OR USED IN ANY MANNER ON OTHER PROJECTS OR EXTENSIONS TO THIS PROJECT WITHOUT THE PRIOR WRITTEN CONSENT OF STARBUCKS CORPORATION. THESE DRAWINGS AND SPECIFICATIONS ARE INTENDED TO EXPRESS DESIGN INTENT FOR A PROTOTYPICAL STARBUCKS STORE (WHICH IS SUBJECT TO CHANGE AT ANY TIME) AND DO NOT REFLECT ACTUAL SITE CONDITIONS. NEITHER PARTY SHALL HAVE ANY OBLIGATION NOR LIABILITY TO THE OTHER (EXCEPT STATED ABOVE) UNTIL A WRITTEN AGREEMENT IS FULLY EXECUTED BY BOTH PARTIES.

STARBUCKS TEMPLATE VERSION IIG2021.01.22

ARCHITECT OF RECORD

THIS DRAWING IS A DESIGN DEVELOPMENT DOCUMENT. SITE SPECIFIC MODIFICATIONS MADE UNDER THE RESPONSIBLE CHARGE OF THE ARCHITECT AND/OR ENGINEER-OF-RECORD WILL BE REQUIRED PRIOR TO USING THIS DOCUMENT FOR BIDDING, PERMITTING, OR CONSTRUCTION.

PROJECT NAME:
ALBERTSONS #158 LA HABRA
PROJECT ADDRESS:
1800 WEST WHITTIER BLVD
LA HABRA, CA 90631

STORE #: TBD
PROJECT #: 92145-001
ISSUE DATE: 04.23.2021
DESIGN MANAGER: JEANIE BALOG
PRODUCTION DESIGNER: IDS - CIARA O
CHECKED BY: YEINY MORALES
KIOSK TYPE: ZENITH GALLEY

Revision Schedule				
Rev	Date	By	Description	
1	06.02.21	IDG	UPDATED BACKGROUND	
2	07.26.21	IDG	UPDATED STOREFRONT, SHIFT KIOSK	

SHEET TITLE:
FF & E PLAN

SCALE: AS SHOWN

SHEET NUMBER:
1101

WALL TREATMENT (AREA) SCHEDULE - "Q"					
DESIGN ID	AREA	DESCRIPTION	FURN. BY	INST. BY	COMMENTS
TILE					
20241	16 SF	TILE - RINIA - CREAM - 12X12IN 300X300MM SHEET	SB	GC	GROUT PROVIDED BY GC. GROUT: MAPEI - 04 BAHAMA BEIGE, OR EQUAL
WALL COVERING					
17777	455 SF	WALL TEXTURE - TEXTURGLAS - TG11 SMALL HERRINGBONE	SB	GC	PAINTED 20444-ES. UN IN PRE-CON CALL. WALL COVERING TO SHIP PRIOR TO KIOSK INSTALL. GC TO REFER TO MANUFACTURER'S INSTALLATION INSTRUCTIONS. GC TO PROVIDE ADHESIVE.

WALL BASE SCHEDULE - "B"					
DESIGN ID	LENGTH	DESCRIPTION	FURN. BY	INST. BY	COMMENTS
VINYL BASE					
X9400	12' - 6 1/4"	VINYL BASE - 6" BLACK	GC	GC	GC TO PROVIDE ENOUGH MATERIAL FOR STARBUCKS SPACE. DOES NOT INCLUDE KIOSK.

PAINT SCHEDULE					
DESIGN ID	DESCRIPTION	LRV	FURN. BY	INST. BY	COMMENTS
20444	SW7043 WORLDLY GRAY, OR EQUIVALENT	57	GC	GC	

GRAPHICS AND ARTWORK SCHEDULE - "G"					
DESIGN ID	COUNT	DESCRIPTION	FURN. BY	INST. BY	COMMENTS
GRAPHICS - INTERIOR MENU					
18982	6	MENU BOARD - FRONT INSERT PANEL WITH SQUARE FRAME - BLACK	SB	FC	
18983	1	MENU BOARD - DAILY OFFERING CHALKBOARD WITH SQUARE FRAME - BLACK	SB	FC	

KEYED NOTES

- REFER TO RCP FOR SIGNAGE SCHEDULE.
- EXTERNAL STORAGE CABINET.
- FREESTANDING CONDIMENT CART.
- FINISHES BY LICENSEE.
- GC TO SECURE STORAGE CABINET TO WALL.

GENERAL NOTES

- FLOORS, WALL, AND CEILING FINISHES IN FOOD PREPARATION AREAS SHALL BE SMOOTH, NON-TOXIC, NON-ABSORBENT, DURABLE, AND EASILY CLEANABLE. PAINT IN THESE AREAS SHALL BE WASHABLE, SEMI-GLOSS OR HIGH GLOSS FINISH.
- CHANGE OF PAINT COLOR ONLY AT INSIDE CORNERS, UNLESS NOTED OTHERWISE.
- PAINT SUBSTITUTIONS ARE NOT ALLOWED. USE STARBUCKS NATIONAL SHERWIN WILLIAMS ACCOUNT "COLOR CODE" WHEN ORDERING PAINTS.
- PAINT FINISHES SHALL BE APPLIED AS FOLLOWS, UNLESS NOTED OTHERWISE:
 - WOODS AND METAL SURFACES SHALL BE SEMI-GLOSS OR EQUAL.
 - ACCENT AND TRIM PAINTS SHALL BE SEMI-GLOSS OR EQUAL.
 - WALL AND CEILING PAINTS SHALL BE EGGSHELL OR EQUAL.
 - PAINTS IN WORKROOM RESTROOM(S) OR CAFE BAR SHALL BE SEMI-GLOSS OR EQUAL.
- REFER TO INTERIOR WALL FINISH PLAN SHEET I106 FOR PAINT SCHEDULES AND WALL FINISH SCHEDULE.
- WORKROOM TO BE FINISHED PER LOCAL CODE. GENERAL CONTRACTOR TO PROVIDE AND INSTALL WORKROOM WALL FINISHES.
- ALL WOOD SURFACES (DOORS, TRIM, SHELVES, CABINETS) SHALL BE SEALED.
- ALL FLOOR AND WALL JUNCTIONS IN STORAGE AND FOOD PREPARATION AREAS SHALL HAVE A 6" COVED BASE.
- GENERAL CONTRACTOR TO INSTALL WALL BLOCKING AND HANGERS FOR WALL SHELVING BEFORE INSTALLING BACK BAR WALL TILE.
- REFER TO MANUFACTURER'S INSTRUCTIONS INCLUDED WITH ARTWORK / GRAPHICS FOR PROPER INSTALLATION.



STARBUCKS
2401 UTAH AVENUE SOUTH
SEATTLE, WASHINGTON 98134
(206) 318-1575

THESE DRAWINGS AND THE PROJECT MANUAL ARE CONFIDENTIAL AND SHALL REMAIN THE SOLE PROPERTY OF STARBUCKS CORPORATION, WHICH IS THE OWNER OF THE COPYRIGHT IN THIS WORK. THEY SHALL NOT BE REPRODUCED (IN WHOLE OR IN PART), SHARED WITH THIRD PARTIES OR USED IN ANY MANNER ON OTHER PROJECTS OR EXTENSIONS TO THIS PROJECT WITHOUT THE PRIOR WRITTEN CONSENT OF STARBUCKS CORPORATION. THESE DRAWINGS AND SPECIFICATIONS ARE INTENDED TO EXPRESS DESIGN INTENT FOR A PROTOTYPICAL STARBUCKS STORE (WHICH IS SUBJECT TO CHANGE AT ANYTIME) AND DO NOT REFLECT ACTUAL SITE CONDITIONS. NEITHER PARTY SHALL HAVE ANY OBLIGATION NOR LIABILITY TO THE OTHER (EXCEPT STATED ABOVE) UNTIL A WRITTEN AGREEMENT IS FULLY EXECUTED BY BOTH PARTIES.

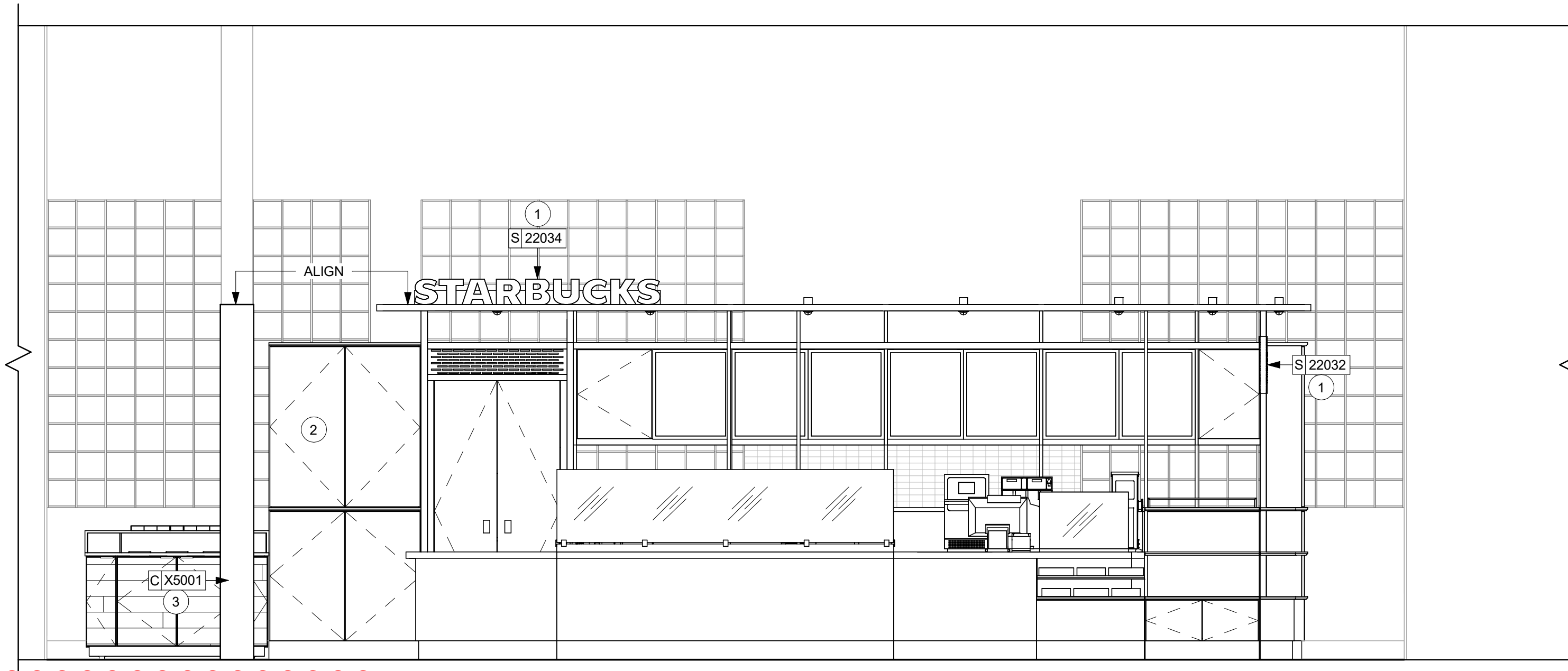
STARBUCKS TEMPLATE VERSION IIG2021.01.22

ARCHITECT OF RECORD

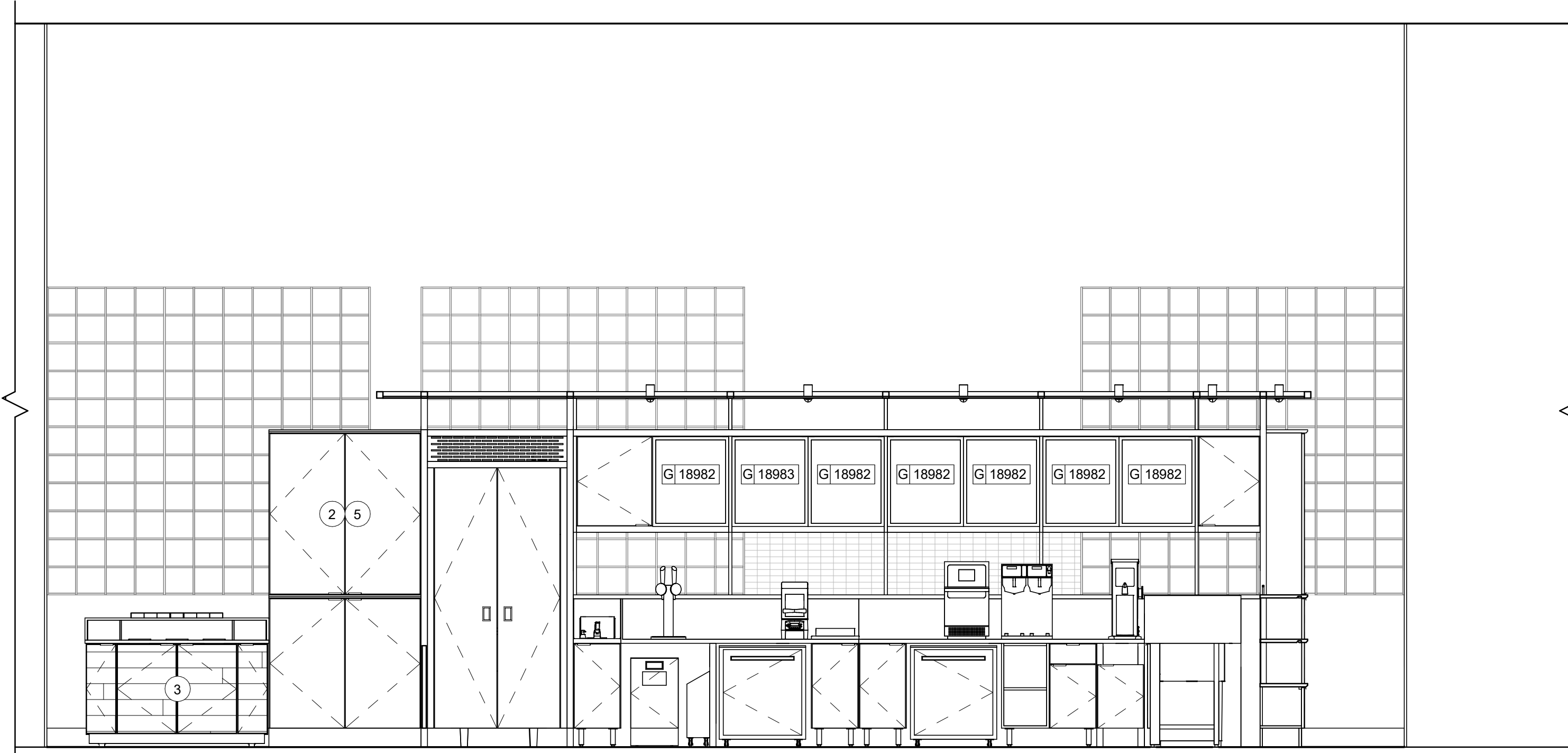
THIS DRAWING IS A DESIGN DEVELOPMENT DOCUMENT. SITE SPECIFIC MODIFICATIONS MADE UNDER THE RESPONSIBLE CHARGE OF THE ARCHITECT AND/OR ENGINEER-OF-RECORD WILL BE REQUIRED PRIOR TO USING THIS DOCUMENT FOR BIDDING, PERMITTING, OR CONSTRUCTION.

LICENSED STORES RESPONSIBILITY LEGEND

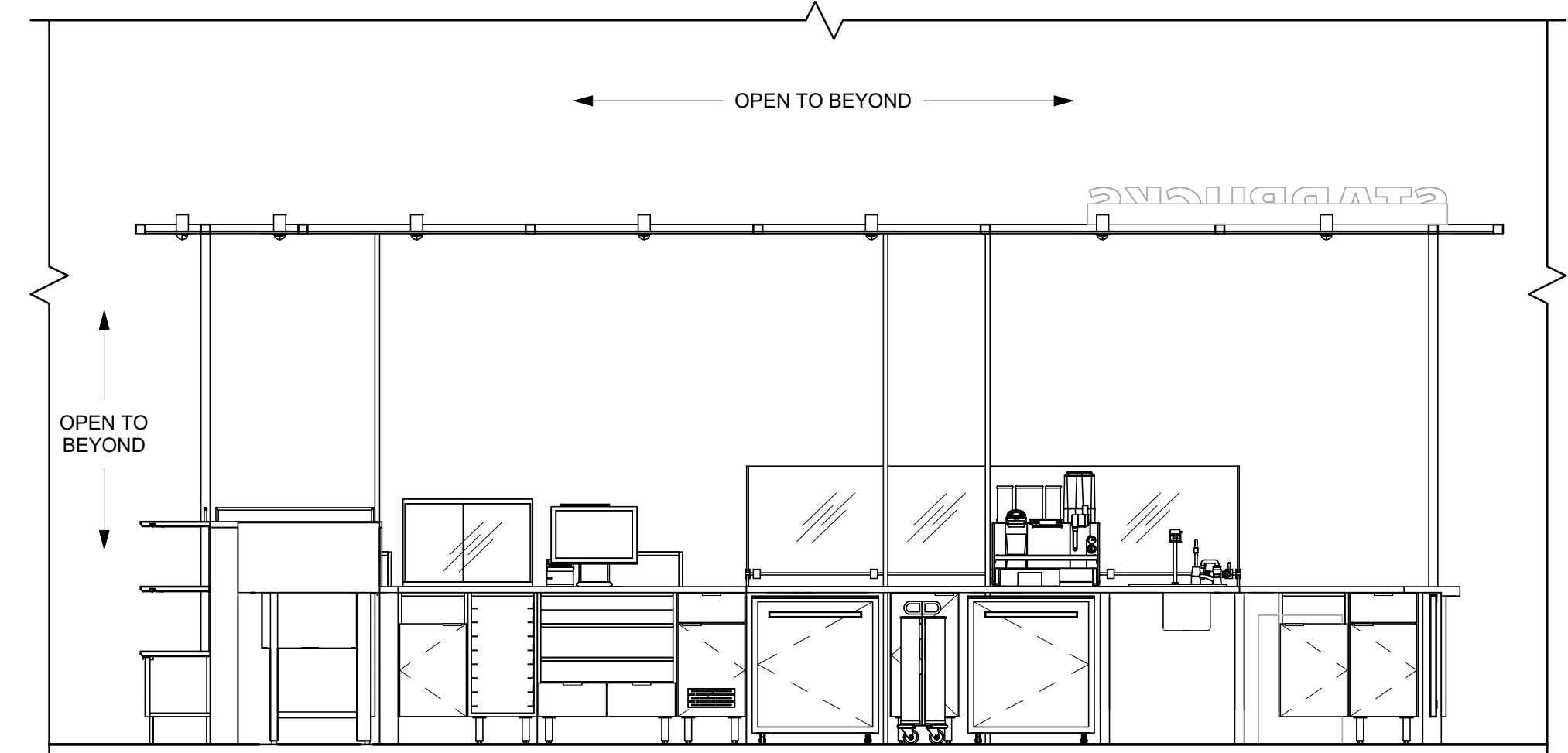
- SB - STARBUCKS
- FC - STARBUCKS FIXTURE CONTRACTOR
- LC - LICENSEE
- GC - LICENSEE'S GENERAL CONTRACTOR



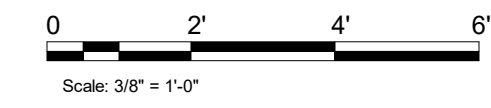
1 ELEVATION AT KIOSK FRONT
Scale: 3/8" = 1'-0"



2 ELEVATION AT BACKBAR
Scale: 3/8" = 1'-0"



3 ELEVATION AT FRONTBAR - PARTNER SIDE
Scale: 3/8" = 1'-0"



DESIGN DEVELOPMENT ONLY - NOT INTENDED FOR CONSTRUCTION USE

PROJECT NAME:
ALBERTSONS #158 LA
HABRA
PROJECT ADDRESS:
1800 WEST WHITTIER BLVD
LA HABRA, CA 90631

STORE #: TBD
PROJECT #: 92145-001
ISSUE DATE: 04.23.2021
DESIGN MANAGER: JEANIE DALOG
PRODUCTION DESIGNER: IDG - CIARA O
CHECKED BY: YEINY MORALES
KIOSK TYPE: ZENITH GALLEY

Revision Schedule			
Rev	Date	By	Description
1	06.02.21	IDG	UPDATED BACKGROUND
2	07.26.21	IDG	UPDATED STOREFRONT, SHIFT KIOSK

SHEET TITLE:
INTERIOR FINISH ELEVATIONS

SCALE: AS SHOWN
SHEET NUMBER:
1201