

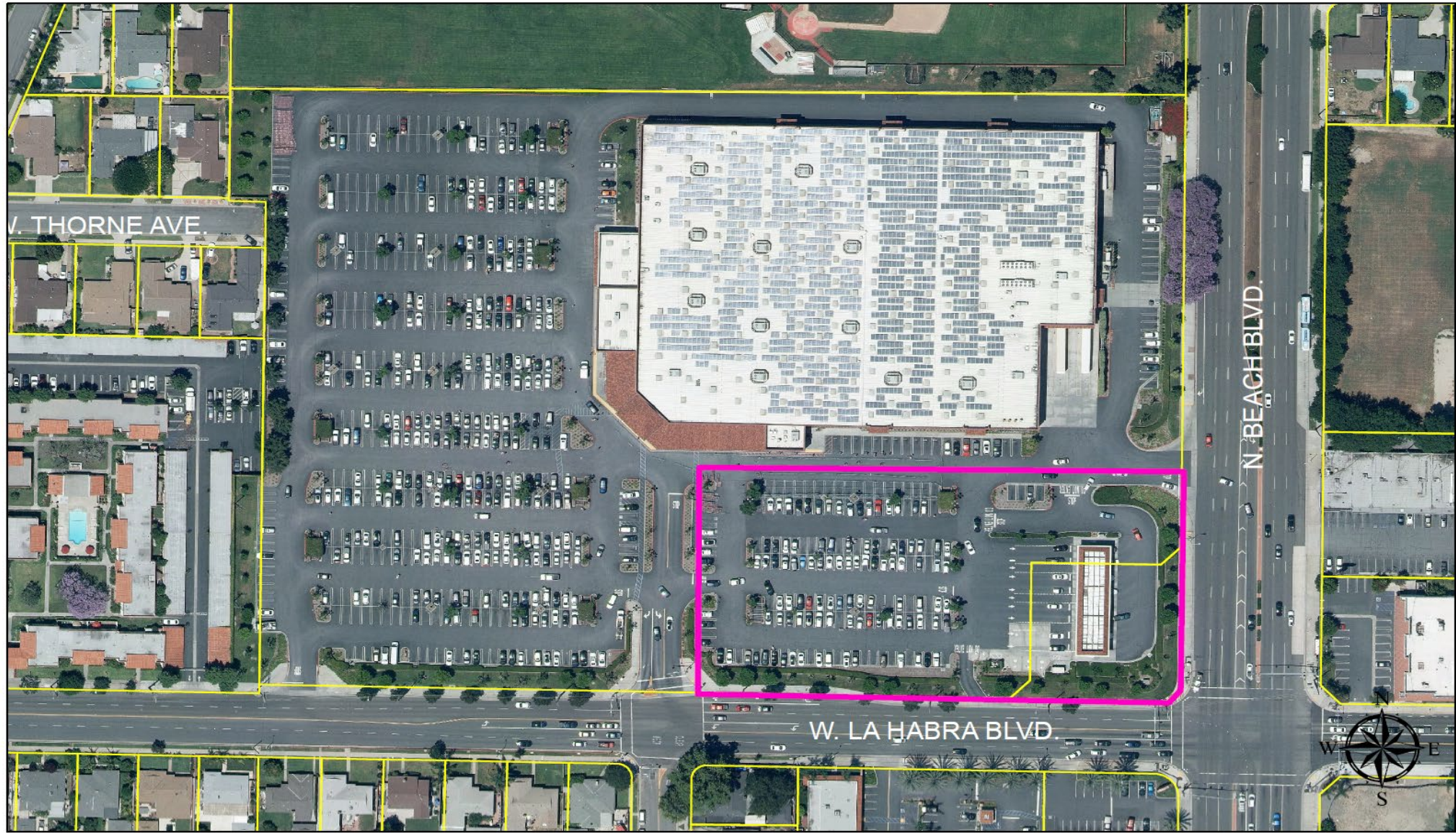


PLANNING COMMISSION MEETING

NOVEMBER 8, 2021

PUBLIC HEARING

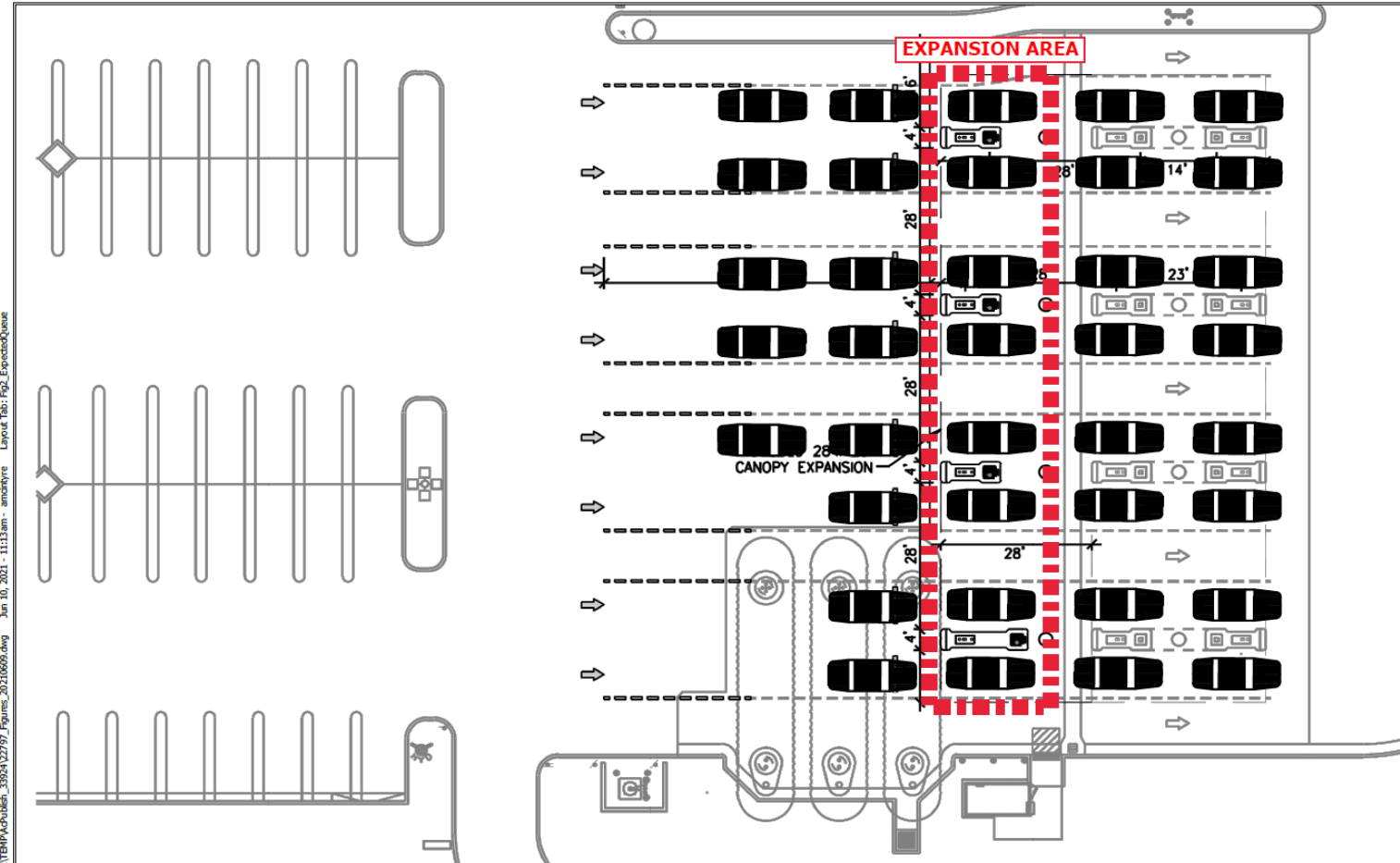
DULY NOTICED PUBLIC HEARING TO CONSIDER A REQUEST FOR DESIGN REVIEW 21-04 AND CONDITIONAL USE PERMIT 21-02 TO EXPAND THE COSTCO GASOLINE FUELING STATION LOCATED AT 103 NORTH BEACH BOULEVARD.



103 N. Beach Blvd.

QUEUEING REPORT

La Habra Costco Gasoline Fuel Station Expansion

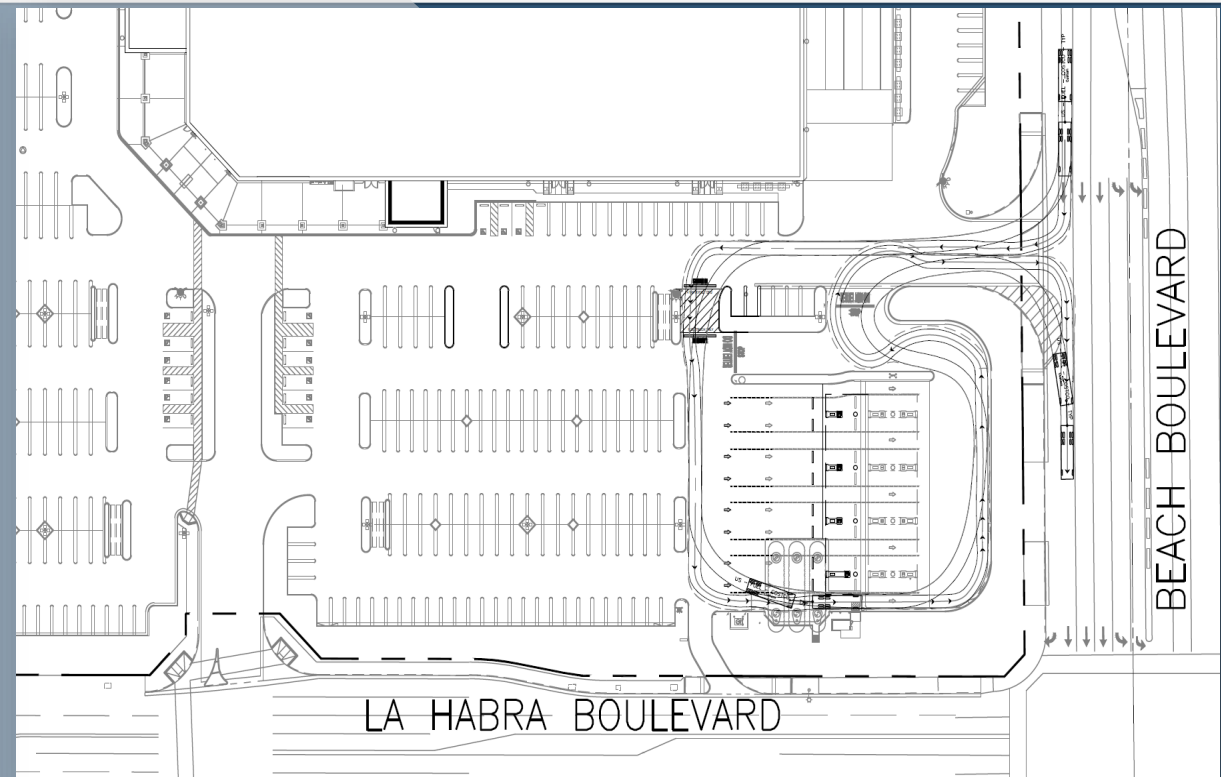


C:\W1 Applications\Autodesk\TBM\Pub\esh_3804\22797_Figures_20210609.dwg Jun 10, 2021 - 11:13am - amakeyre Layout Tab: Fig_ExpectedQueue

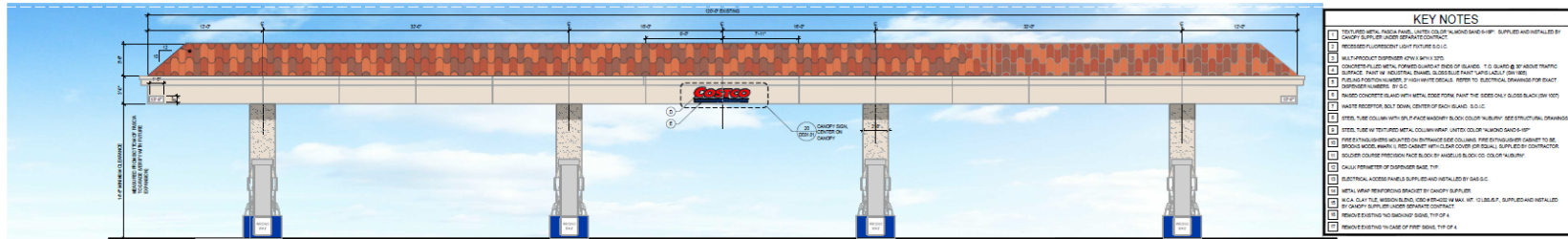
Expected Weekday PM Peak Hour Maximum Queue
La Habra, California

Figure
2

TANKER TURNING PLAN



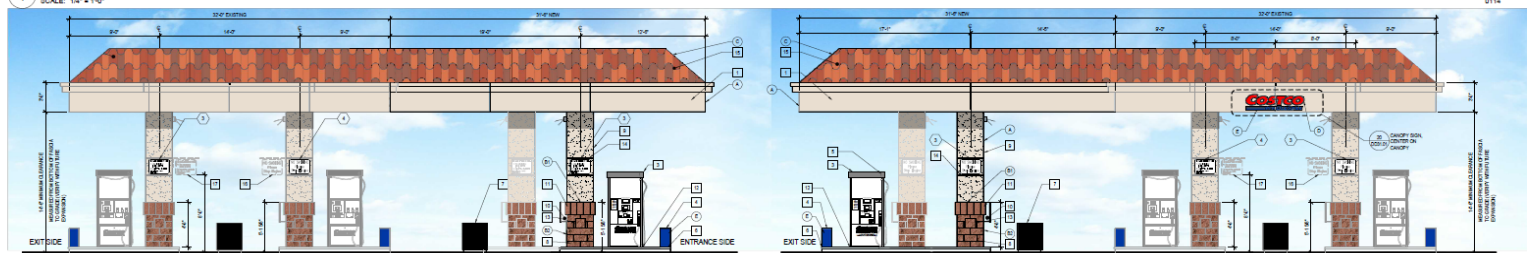
ELEVATIONS



1 CANOPY & DISPENSER ISLANDS EAST ELEVATION

SCALE: 1/4" = 1'-0"

- KEY NOTES**
1. 20'x12'x12' ALUMINUM PANEL, 3000' COLOR 'MADRID SAND' SHIP. SUPPLIED AND INSTALLED BY SHOPPER SUPPLY. SEE EXISTING CONTRACT.
 2. RECESSED FLUORESCENT LIGHT FIXTURE S.O.C.
 3. ALL PRODUCT TO BE PERFORMED WITH S.O.C.
 4. 20'x12'x12' ALUMINUM PANEL, 3000' COLOR 'MADRID SAND' SHIP. SUPPLIED AND INSTALLED BY SHOPPER SUPPLY. SEE EXISTING CONTRACT.
 5. 20'x12'x12' ALUMINUM PANEL, 3000' COLOR 'MADRID SAND' SHIP. SUPPLIED AND INSTALLED BY SHOPPER SUPPLY. SEE EXISTING CONTRACT.
 6. 20'x12'x12' ALUMINUM PANEL, 3000' COLOR 'MADRID SAND' SHIP. SUPPLIED AND INSTALLED BY SHOPPER SUPPLY. SEE EXISTING CONTRACT.
 7. 20'x12'x12' ALUMINUM PANEL, 3000' COLOR 'MADRID SAND' SHIP. SUPPLIED AND INSTALLED BY SHOPPER SUPPLY. SEE EXISTING CONTRACT.
 8. 20'x12'x12' ALUMINUM PANEL, 3000' COLOR 'MADRID SAND' SHIP. SUPPLIED AND INSTALLED BY SHOPPER SUPPLY. SEE EXISTING CONTRACT.
 9. 20'x12'x12' ALUMINUM PANEL, 3000' COLOR 'MADRID SAND' SHIP. SUPPLIED AND INSTALLED BY SHOPPER SUPPLY. SEE EXISTING CONTRACT.
 10. 20'x12'x12' ALUMINUM PANEL, 3000' COLOR 'MADRID SAND' SHIP. SUPPLIED AND INSTALLED BY SHOPPER SUPPLY. SEE EXISTING CONTRACT.
 11. 20'x12'x12' ALUMINUM PANEL, 3000' COLOR 'MADRID SAND' SHIP. SUPPLIED AND INSTALLED BY SHOPPER SUPPLY. SEE EXISTING CONTRACT.
 12. 20'x12'x12' ALUMINUM PANEL, 3000' COLOR 'MADRID SAND' SHIP. SUPPLIED AND INSTALLED BY SHOPPER SUPPLY. SEE EXISTING CONTRACT.
 13. 20'x12'x12' ALUMINUM PANEL, 3000' COLOR 'MADRID SAND' SHIP. SUPPLIED AND INSTALLED BY SHOPPER SUPPLY. SEE EXISTING CONTRACT.
 14. 20'x12'x12' ALUMINUM PANEL, 3000' COLOR 'MADRID SAND' SHIP. SUPPLIED AND INSTALLED BY SHOPPER SUPPLY. SEE EXISTING CONTRACT.
 15. 20'x12'x12' ALUMINUM PANEL, 3000' COLOR 'MADRID SAND' SHIP. SUPPLIED AND INSTALLED BY SHOPPER SUPPLY. SEE EXISTING CONTRACT.
 16. 20'x12'x12' ALUMINUM PANEL, 3000' COLOR 'MADRID SAND' SHIP. SUPPLIED AND INSTALLED BY SHOPPER SUPPLY. SEE EXISTING CONTRACT.
 17. 20'x12'x12' ALUMINUM PANEL, 3000' COLOR 'MADRID SAND' SHIP. SUPPLIED AND INSTALLED BY SHOPPER SUPPLY. SEE EXISTING CONTRACT.
 18. 20'x12'x12' ALUMINUM PANEL, 3000' COLOR 'MADRID SAND' SHIP. SUPPLIED AND INSTALLED BY SHOPPER SUPPLY. SEE EXISTING CONTRACT.
 19. 20'x12'x12' ALUMINUM PANEL, 3000' COLOR 'MADRID SAND' SHIP. SUPPLIED AND INSTALLED BY SHOPPER SUPPLY. SEE EXISTING CONTRACT.
 20. 20'x12'x12' ALUMINUM PANEL, 3000' COLOR 'MADRID SAND' SHIP. SUPPLIED AND INSTALLED BY SHOPPER SUPPLY. SEE EXISTING CONTRACT.



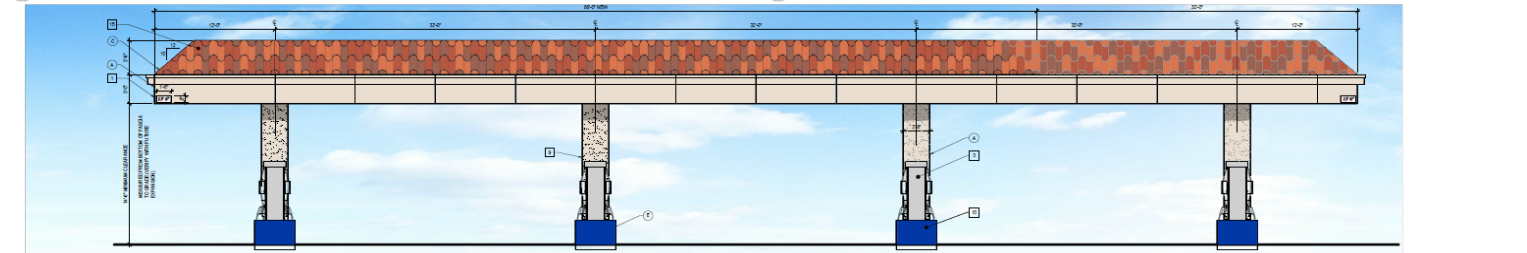
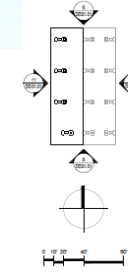
6 CANOPY & DISPENSER ISLANDS NORTH ELEVATION

SCALE: 1/4" = 1'-0"

8 CANOPY & DISPENSER ISLANDS SOUTH ELEVATION

SCALE: 1/4" = 1'-0"

KEY PLAN



11 CANOPY & DISPENSER ISLANDS WEST ELEVATION

SCALE: 1/4" = 1'-0"

MATERIALS

1. ALUMINUM PANEL 3000' COLOR 'MADRID SAND' SHIP	2. ALUMINUM PRECISION ANGELOUS BLOCK	3. CLAY TILE MISSION BLEND MCA	4. SAFETY RED SHERWIN WILLIAMS	5. LAMP GLASS OR 100'S SHERWIN WILLIAMS
6. ALUMINUM SPLIT FACE ANGELOUS BLOCK				

SOIC - FUEL FACILITY SIGNAGE

QTY	DESCRIPTION	TYPICAL PLACEMENT
5	20'x12'x12' ALUMINUM PANEL, 3000' COLOR 'MADRID SAND' SHIP	FRONT OF EACH ISLAND FACING EAST
10	NO SIGNAGE TO BE PLACED ON TOP OF ROOF	AT ENTRY AND TOP OF COLUMNS - FULL HEIGHT ON COLUMNS
8	20'x12'x12' ALUMINUM PANEL, 3000' COLOR 'MADRID SAND' SHIP	FRONT AND REAR OF EACH ISLAND FACING EAST AND WEST



Costco WHOLESALE
LA HABRA, CA 91777

101 N. BEACH BLVD.
LA HABRA, CA 90831

MG2

COSTCO WHOLESALE
LA HABRA, CALIFORNIA

PROPOSED ELEVATIONS
APRIL 15, 2021

20 CANOPY SIGN
SCALE: 1/2" = 1'-0"

01-0480-13
APRIL 15, 2021
CONCEPT ELEVATIONS
DD31-02

RECOMMENDATION

A RESOLUTION OF THE PLANNING COMMISSION OF THE CITY OF LA HABRA APPROVING DESIGN REVIEW 21-04 FOR THE EXPANSION OF THE COSTCO GASOLINE FUELING STATION AT 103 NORTH BEACH BOULEVARD, MAKING THE APPROPRIATE FINDINGS, AS PER THE APPROVED PLANS, AND SUBJECT TO CONDITIONS.

RECOMMENDATION

A RESOLUTION OF THE PLANNING COMMISSION OF THE CITY OF LA HABRA APPROVING CONDITIONAL USE PERMIT 21-02 FOR THE EXPANSION OF THE COSTCO GASOLINE FUELING STATION AT 103 NORTH BEACH BOULEVARD, MAKING THE APPROPRIATE FINDINGS, AS PER THE APPROVED PLANS, AND SUBJECT TO CONDITIONS.