

QUOTE/CONFIRMATION

To: 311212 Phone: 760-471-1212	Quote No.: 20818	GMH MANUFACTURING WEST, INC.
AA AMERICAN PACIFIC MFG HOMES, INC.	Quote Date: 03/31/2022	Perris
DBA: PACIFIC MANUFACTURED HOMES-SAN MARCOS	Rep.: VINCENT J PURCELL	3100 N PERRIS BLVD
145 BENT AVENUE	Sales Note: LA HABRA #78	PERRIS, CA 92571
SAN MARCOS, CA 92078	Model #...: 71GOP20483BE22 HUD	
	Model Series: GOLDEN PACIFIC	
Retail Cust: SPEC UNIT	Model Name: GPII-2048-3B(56'/54') OCEANO	
Financed By:	Drawing #: 712048-3B	Ordered by: ANGELA/VINCE FOR SEAN
	Print Date: 3/31/2022 - 2:47 PM	Phone No: 951-657-1611

Opt.#	Description	Qty	Price	Opt.#	Description	Qty	Price
070048	EXTERIOR DIMS:9'10" X 56'/54' FOUNDATION READY - I BEAMS EXTENDED * USE Z-BAR W/VERTICAL SIDING * KEEP ALL DROPS, PIPES AND OUTRIGGERS MIN. 6" FROM EXT. WALLS * FOUNDATION WALLS NEED OPEN POCKET AREAS AT BOTH ENDS AT I-BEAMS **	1	STD	250440	STNLS STEEL APPLIANC PKG#1 W/MICRO	1	2,650
070055	** HOME ADDRESS ???	1	STD	100065	<<<<< 2020 APPLIANCES >>>>>	1	STD
070063	CONFIRM HOME SIZE & F-14	1	STD	250320	DISHWASHER SS FFD2426TS	1	-
070095	UTILITY LOCATIONS VERIFIED ???	1	STD	250345	** 7" CORNER STILE REQUIRED ** MICROWAVE RANGEHOOD SS EFMV1846VS	1	-
380035	BODY PAINT COLOR ???	1	STD	250325	RANGE GAS SS FFGF3054TS SLF CLN FR	1	-
380235	EXTERIOR TRIM PAINT COLOR ???	1	STD	250150	**REQUIRES 71,000 BTU REFR SS 22CF CNTR DEPTH FRSC2333AS	1	-
380039	SHUTTERS PAINT COLOR ???	1	STD		**24" DEEP COUNTER DEPTH REFRIG** (SS PKG 1 ITEM)		
392219	DIMENSIONAL ROOF SHINGLES STD ???	1	STD		MORNING ROOM/NOOK		
100000	***** HOME MODIFICATIONS *****	1	-		PRIMARY BEDROOM		
180670	CUSTOM 1' LENGTH STRETCH 2-SECTION **'A' FLOOR: 8FT **'B' FLOOR: 6FT * CABINETRY & ADDITIONAL WINDOWS *PRICED SEPARATELY-ADD ENG/PLAN APP	14	24.080		SECOND BEDROOM		
060205	INSULATION R-13 2X4 EXT WALLS STD	1	STD		THIRD BEDROOM		
060190	INSULATION R-22 IN FLOOR STD	1	STD		FOURTH (FIFTH) BEDROOM		
060170	INSULATION R-38 IN CEILING STD	1	STD		STUDY/DEN		
180125	SIDEWALL 9'-0" FLAT CEILING STD	1	STD	350255	PRIMARY BATHROOM FORMICA COUNTERTOP COLOR ???? WITH FORMICA BACKSPLASH	1	STD
280373	COFFERED CEILING W/MOLDING STD	1	STD	290254	LINO COLOR (DIAMONDFLOR/LUXFLOR)???	1	STD
100037	***** EXTERIOR DOORS *****	1	STD	150040	----- FULL WIDTH MIRROR ABOVE LAVY	1	STD
100150	1/2 GLASS REAR DOOR W/BLIND 30X80 STD (GW-35 RH / GW-36 LH) SEE PRINT	1	STD	170010	LIGHT TO BE CENTERED ABOVE MIRROR PER DETAIL REF: DC 15-21	1	STD
100025	6 PANEL FRONT DOOR 36X80 (GW-23 RH GW-24 LH) SEE PRINT	1	STD	110011	MEDICINE CAB W/ BEVEL MIRROR	1	80
140023	*** WINDOWS ***	1	STD	270385	TOPMOUNT PORCELN RECTANGL SINK STD	1	STD
140050	VINYL DUAL GLAZE WINDOWS LOW-E(STD) - NON GRID -	1	STD	270140	60" FG SHOWER W/BN CLEAR ENCLOSURE	1	395
140360	ADD 30X59 WINDOW W-35 ** (1)PRIMARY BEDROOM ENDWALL (1)BEDROOM 2 SIDEWALL	2	710	350255	SECOND BATHROOM FORMICA COUNTERTOP COLOR ???? WITH FORMICA BACKSPLASH	1	STD
140320	ADD 46X24 SLIDER WINDOW W-53 **BOTH BATHS	2	500	290254	LINO COLOR (DIAMONDFLOR/LUXFLOR)???	1	STD
150106	PICTURE FRAME INT WDW TRIM MOST WDW	1	STD	150040	----- FULL WIDTH MIRROR ABOVE LAVY	1	STD
400430	CEMENTFIBER SIDING HARDI STD	1	STD	170010	LIGHT TO BE CENTERED ABOVE MIRROR PER DETAIL REF: DC 15-21	1	STD
400069	MIRATEC WINDW/DOOR TRIM 4 SIDES STD	1	STD	110011	MEDICINE CAB W/ BEVEL MIRROR	1	80
180306	2X6 ROUGH SAWN FASCIA STD	1	STD	270385	TOPMOUNT PORCELN RECTANGL SINK STD	1	STD
280050	3:12 ROOF PITCH STD	1	STD	270030	60" FG 1PC TUB/SHOWER	1	STD
404030	PROVINCE/PRAIRIE ARCHTOP SHUTER STD FRONT ENDWALL & ENTRY SIDEWALL MOST WINDOWS - SEE DETAIL PRINT - (USE FLAT TOP OVER LAP)	1	STD		THIRD BATHROOM		
280056	ROOF LOAD 20# TRUSSES 24" OC STD	1	STD		UTILITY		
180032	12" FRONT OVERHANG STD	1	STD	290254	LINO COLOR (DIAMONDFLOR/LUXFLOR)???	1	STD
180034	OMIT REAR OVERHANG STD	1	STD	420065	CARRIER GAS FURNACE STD NEED CALCS WITH NADA3606CC COIL BOX	1	STD
280161	3" NOMINAL EAVES STD	1	STD		* SEE QA DEPT FOR INFORMATION ECOBEE3 PROGRAMMABLE THERMOSTAT STD	1	STD
280509	ADD PEAK TRUSS ON OFFSET AVAILABLE FOR 11'-10" AND 13'-6" NOT AVAILABLE W/ VAULTED CEILINGS	1	250	030006	GAS DRYER PREP	1	STD
240005	ADD EXTRA AXLE TO ENGINEERED PRINT IDLER AND BREAK AXLES PER CSTM PLAN	2	1,100	030010	WASHER PLUMBING	1	STD
	LIVING (GREAT) ROOM			150854	WHITE SHELF&POLE OVER WASH/DRYR STD	1	STD
	DINING ROOM						
350255	KITCHEN FORMICA COUNTERTOP COLOR ???? WITH FORMICA BACKSPLASH	1	STD				
290254	LINO COLOR (DIAMONDFLOR/LUXFLOR)???	1	STD				
100001	-----	1	STD				
250025	GARBAGE DISPOSAL-1/2 HP	1	-				
250020	PLUMB FOR ICE MAKER	1	STD				
270505	TOP MOUNT SS KITCHEN SINK (8" DEEP)	1	STD				
271115	SNGL LVR BN KITCH FAUCET W/SPRAY PF	1	STD				



145 BENT AVENUE 11510 WOODSIDE AVENUE
SAN MARCOS, CA 92078 SANTEE, CA 92071
(760) 471-1212 (619) 449-3800

**** IMPORTANT: Manager must sign and date this confirmation in order for home to be scheduled and built.**
**** FAX No: 951-943-9892 Please sign and FAX X**
 Note: 3 BDR 2.0 BTH
QUOTE/CONFIRMATION
 www.pacifichomes.net

QUOTE/CONFIRMATION

To: 311212 Phone: 760-471-1212 AA AMERICAN PACIFIC MFG HOMES, INC. DBA: PACIFIC MANUFACTURED HOMES-SAN MARCOS 145 BENT AVENUE SAN MARCOS, CA 92078	Quote No.: 20818 Quote Date: 03/31/2022 Sales Rep.: VINCENT J PURCELL Sales Note: LA HABRA #78 Model #...: 71GOP20483BH22 HUD Model Series: GOLDEN PACIFIC Model Name: GP11-2048-3B(56'/54') OCEANO Drawing #: 712048-3B Print Date: 3/31/2022 - 2:47 PM	GMH MANUFACTURING WEST, INC. Perris 3100 N PERRIS BLVD PERRIS, CA 92571 Ordered by: ANGELA/VINCE FOR SEAN Phone No: 951-657-1611
Retail Cust: SPEC UNIT Financed By:		

Opt.#	Description	Qty	Price	Opt.#	Description	Qty	Price	
270080	40GAL GAS WATER HEATER EXTERIR DOOR	1	STD		MANUFACTURER CERTIFIES THIS HOME IS COMPLIANT WITH THE TSCA TITLE VI TOXIC SUBSTANCE CONTROL ACT * VINYL FLOOR DISCLOSURE AS A COURTESY TO OUR CUSTOMERS CLAYTON WEST HOMES INSTALLS VINYL FLOORING IN LARGE CONTIGUOUS AREAS THIS INCREASES RISK OF POSSIBLE OF DAMAGE AND DISCOVERY OF DAMAGE AFTER SHIPMENT. WE RESERVE THE RIGHT TO REPLACE PORTIONS OF FLOORING AND THE USE OF FLOOR SEAM TRIM AT TASTEFUL LOCATIONS IN THE UNLIKELY EVENT A PORTIONS' REPLACED WIND ZONE CONSTRUCTION - I STD SIMILAR AND UPGRADE SUBSTITUTIONS: DURING OUR NATIONAL/INTERNATIONAL MATERIAL SUPPLY SHORTAGE, CHANGES MAY OCCURE WITHOUT PRIOR NOTICE. AFTER ALL EFFORTS HAVE BEEN EXHAUSTED, SIMILAR OR UPGRADE ITEMS WILL BE SUBSTITUTED WHEN DISRUPTIONS OCCUR.	1	150	
160195	**HIGH EFFICIENCY W/H (.59EF) CA AQMD NOX MITIGATION FEE	1	150	296007			1	STD
080051	ELECTRICAL HOME NOT WIRED FOR AC	1	STD					
080135	100 AMP PANEL BOX	1	STD					
340215	LED SPOT LIGHTS IN KITCHEN	1	STD					
080185	SEE STD FEATUR LIST FOR OTHER AREAS BRACED J-BOX FOR FAN W/ DBL SWITCH **LIVING ROOM	1	70					
080280	- 70 LB RATING - ROCKER SWITCHES T/OUT (STD)	1	STD					
	FAMILY ROOM / BONUS ROOM			180006			1	STD
				010555			1	STD
	CABINETS							
110615	CABINET COLOR ????	1	STD					
110090	STD BRUSH NICKEL KNOBS T-O	1	STD					
110110	36" HIGH BATH LAVY CABINETS (STD) DRAWER OVER DOOR DESIGN	1	STD					
110742	40" TALL KITCHEN OH CABS * USE 96" CABINET HEIGHT PLANS * (NO DRYWALL SOFFIT ABOVE)	1	STD					
	CARPET & DECOR			427001	OTHER OPTIONS PRICE PROTECTION PLAN AMOUNT QUOTED AT PRINT DATE SUBJECT TO CHANGE PER NOTIFICATIONS	1	13,266	
120060	CARPET SIZE:13'6 X 45' 2" WHITE FAUX-WOOD WINDOW BLINDS MOST WINDOWS (N/A TRANSOM AND SOME BATH WINDOWS) *IF NOT AVAILABLE AT TIME OF BUILD *\$50 CREDIT EA WINDOW WILL APPLY	1	STD					
290254	LINO COLOR (DIAMONDFLOR/LUXFLOR)???	1	STD					
020120	CARPET:NEW WAVE --DELIGHT ???	1	STD					
020070	REBOND CARPET PAD 3/8" 5LB STD	1	STD					
290140	LINO AND CARPET AREAS PER PLAN ??? CARPET IN BEDROOMS ONLY LINO REMAINDER OF HOME ** INSTALL BASEBOARD THROUGHOUT **	1	STD					
380029	WASHABLE FLAT INT PAINT #2019 WHITE	1	STD					
	MISCELLANEOUS			070055	99 OPEN ITEMS ** HOME ADDRESS ???	1	-	
270006	PFISTER BN FAUCETS THROUGHOUT	1	STD	070095	UTILITY LOCATIONS VERIFIED ???	1	-	
030060	PEX H&C PLUMBING T/OUT	1	STD	380035	BODY PAINT COLOR ???	1	-	
360261	LOUVERED DOOR ON FAU & UTILITY RM PER PLAN SOLID DOOR IF FURNACE AIR GRILL ON WALL	1	STD	380235	EXTERIOR TRIM PAINT COLOR ???	1	-	
360150	LUX 6-PANEL INTERIOR DOORS MORTICED PLUNGER AND 3 HINGES	1	STD	380039	SHUTTERS PAINT COLOR ???	1	-	
150005	ORANGE PEEL TEXTURE THROUGHOUT	1	STD	392219	DIMENSIONAL ROOF SHINGLES STD ???	1	-	
150010	SQUARE CORNER BEAD ON DRYWALL T-O	1	STD	350255	FORMICA COUNTERTOP COLOR ???	1	-	
160255	ENERGYSTAR VERSION 2 THERMAL ZN 2	1	STD	290254	LINO COLOR (DIAMONDFLOR/LUXFLOR)???	1	-	
150080	2-1/2" CRAFTSMAN BASEBOARD T/O STD	1	STD	350255	FORMICA COUNTERTOP COLOR ????	1	-	
150083	CRAFTSMN WINDOW/DOOR TRIM T/O STD "T-CUT"	1	STD	290254	LINO COLOR (DIAMONDFLOR/LUXFLOR)???	1	-	
160005	VENTILAIR 3 THERM POS FRESHAIR VENT	1	STD	290254	LINO COLOR (DIAMONDFLOR/LUXFLOR)???	1	-	
060005	THERMAL ZONE 2	1	STD	110615	CABINET COLOR ????	1	-	
070020	DRAFTING & ENGINEERING FEE	1	750	290254	LINO COLOR (DIAMONDFLOR/LUXFLOR)???	1	-	
070022	PLAN APPROVAL 3RD PARTY WET STAMPS INSPECTION AGENCY REVIEW CUSTOM HMS	1	250	020120	CARPET:NEW WAVE --DELIGHT ???	1	-	
	SHIP-LOOSE			290140	LINO AND CARPET AREAS PER PLAN ???	1	-	
290063	LINO MARRIAGE LINE TRANS STRIPS STD 8' LENGTH - SEE PLAN FOR QUANTITY ** SEE COLOR ON ORDER ** NONE FOR CARPET AREA	1	STD					
380015	SHIP LOOSE EXT BODY PAINT (PER GAL)	5	125					
380037	SHIP LOOSE EXT TRIM PAINT (PER GAL)	2	50					
380025	SHIP LOOSE INT WALL PAINT PER GAL	3	75					
	DISCLOSURES							
120444	FORMALDEHYDE EMISION STD COMPLIANCE	1	STD					

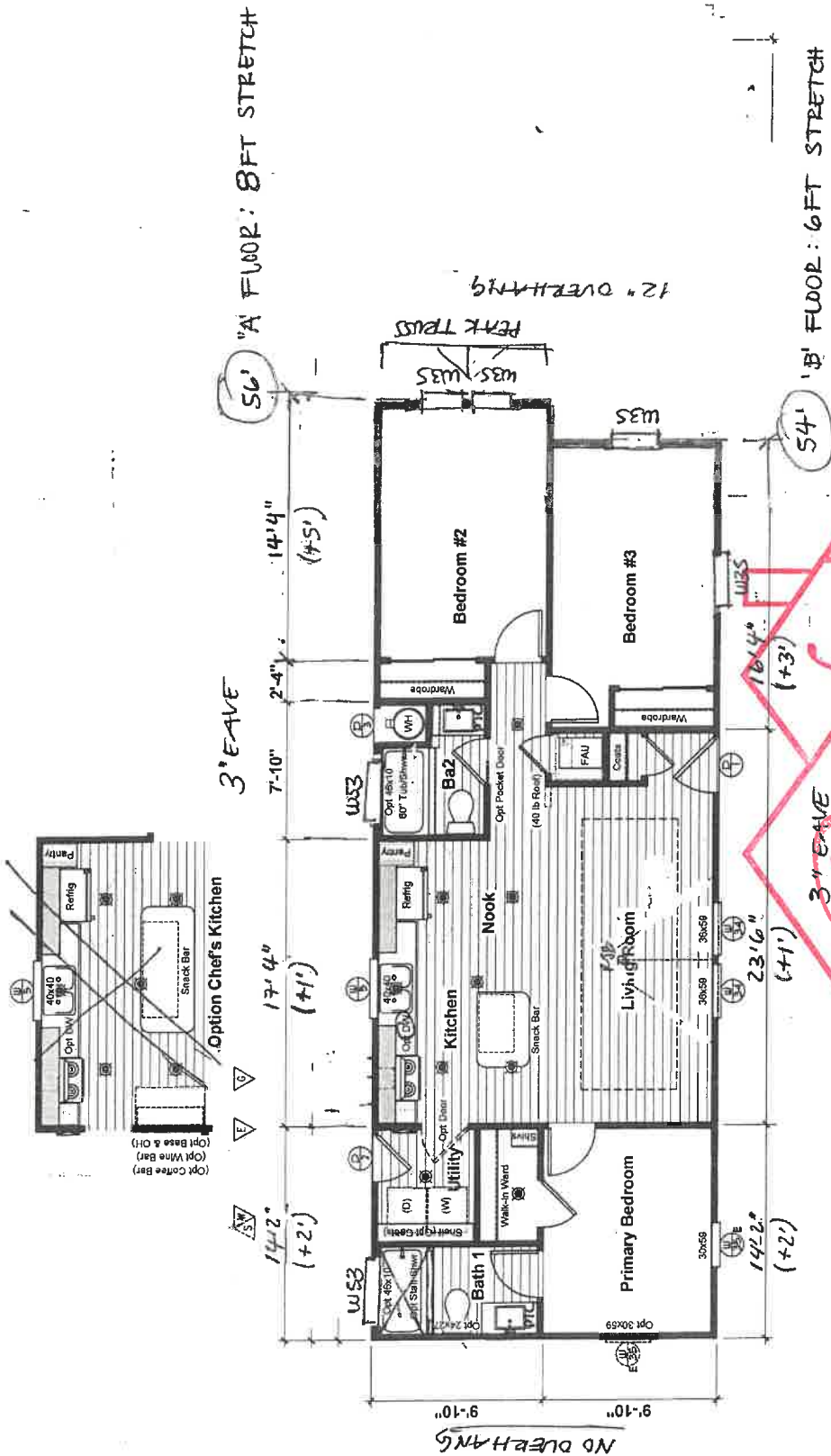
**PRICE NOT LOCKED
CONTACT FACTORY**

Base Cost of Home	88,443
Options Total	44,581
Association Dues	200
MHI Dues	35
Quote Total	133,259

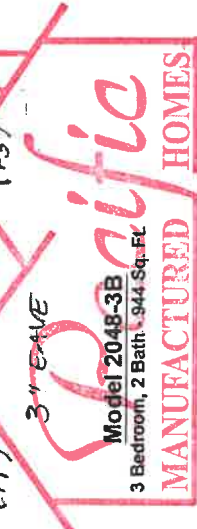
Purchasers represent, to the best of their knowledge, that the Manufactured Home shall be used as a single family Dwelling Unit.

** IMPORTANT: Manager must sign and date this confirmation in order for home to be scheduled and built.

** FAX No: 951-943-9892 Please sign and FAX X _____ Date _____



Oceano
Print Date: 7-15-21



Model 2048-3B
3 Bedroom, 2 Bath - 944 Sq. Ft.

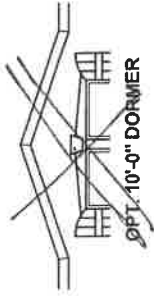
145 BENT AVENUE 11510 WOODSIDE AVENUE

ARCHITECTURAL FLOOR PLAN

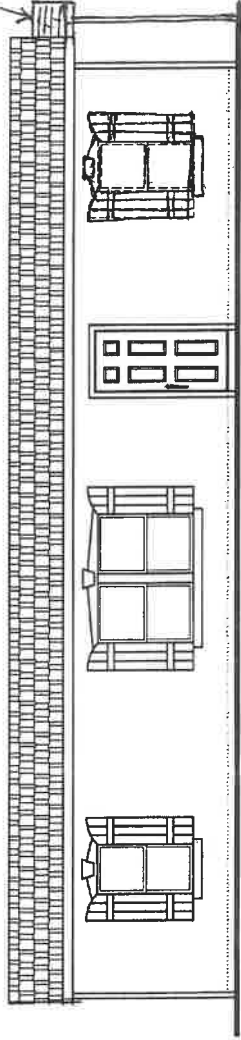
16402 GOTHARD STREET, SUITE B HUNTINGTON BEACH, CA 92223
 1415 E. 6th STREET BEAUMONT, CA 92223
 (714) 642-3330 (951) 845-2671

www.pacifichomes.net

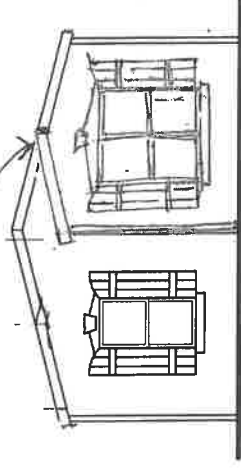
DRAWING TITLE	CMH Manufacturing West, Inc	PRODUCT	CPH	MODEL	2048-3B
	Ferris Division • (951) 657-1611	SQ. FT.	944	DATE	4-15-21
APPROVAL REF:		SHEET	1-A1	REVISED	CB 7-15-21
		DRAWN BY:	C. BUE		



PEAK TRUSS



FRONT SIDEWALL



FRONT ENDWALL

SEE SHEET 2-A.1 FOR TREATMENT AT FRONT SIDE AND END WINDOWS, DOORS AND OTHER ITEMS.

BASIC TRIM AT REAR WINDOWS AND DOORS (TYPICAL)



145 BENT AVENUE
SAN MARCOS, CA 92078
(760) 471-1212

11510 WOODSIDE AVENUE
SANTEE, CA 92071
(619) 449-3800

16402 GOTHARD STREET, SUITE B
HUNTINGTON BEACH, CA 92647
(714) 642-3330

www.pacifichomes.net

CMH Manufacturing West, Inc Perris Division • (951) 657-1611	DRAWING TITLE PROVINCE EXTERIOR (GPII)	PRODUCT GPII	MODEL# 2048-3B
	APPROVAL REF. S.N. REF.	SHEET 2-A	DATE 4-15-21
PERRIS DIVISION DRAWN BY: G. BUE		REVISED 4	



1/4/2022

Clayton Built

Clayton Perris Golden Pacific Series (GPII) - New - Standard Features

Exterior

- * High Flat Ceiling w/ Coffered Area Most Plans
- Hardie Cement Fiber Vertical Siding w/ Z-Bar Flashing
- Exterior House Wrap
- Hand Rolled Semi-Gloss Vista Brand Exterior Paint
- Golden Pacific Provence Exterior w/ Shutters on FEW, FDS
- 2" x 4" Exterior Walls Kiln Dried Studs 16" On Center
- 2" x 4" Interior Walls, 2"x3" Partition walls (per plan)
- 5/4 Eng Wood Trim at all Windows & Doors
- 2"x6" Rough Sawn Fascia
- 4/12 Roof Pitch - Single section homes
- 3/12 Roof Pitch - 16W, 18W, 20W, 22W, 24W, 27W
- 20# Roof load 24" O.C. Trusses
- Dimensional Shingles w/ Class A Fire Rating, Ltd Lifetime Warranty
- 7/16" OSB Roof Sheathing
- 3" Eaves on Both Sides
- 12" Front & Rear Overhangs, 16" Eyebrow per plan
- Peak Truss Gable on Front End Offsets
- 2"x 6" Joists 16" On Center - (most homes)
- 2"x 8" Joists 16" On Center 14'-4" and Wider Floors
- Foundation Ready Chassis w/ Protruding I-Beams
- 3/4" Nominal OSB Floor Decking
- 99-1/2" I-Beam Spacing 11' 10" and Wider Chassis
- 79-1/4" I-Beam Spacing up to 9'-10" wide Chassis
- Underslung Axles

Exterior Doors

- 36"x 80" Six Panel Inswing Fiberglass Front Door
- 30"x 80" 1/2 Window Rear Door w/ Internal Blind
- Round Door Knob and Deadbolt on Exit Doors

Windows

- White Vinyl Frame Dual Glaze Low E Glass
- 46"x48" Horizontal Sliding Main Windows
- Picture Frame Wood Windowsills (N/A transoms & above showers)
- 80" Window Header Heights (Most Windows)
- 2" Fauxwood Mini Blinds Most Windows

Kitchen

- Gas Range 30" Man. Clean w/ hood (Wht or Blk)
- Rangehood w/ Light 30" Vented Thru Ceiling
- 18 cu. ft. Refrigerator (White)
- Plumbing for Ice Maker
- Stainless Steel 8" Deep 50/50 Top Mount Sink
- Brushed Nickel Single Lever Faucet
- Water Shut-off Valves at Sink

Cabinetry

- Hardwood Cabinets & Crown Molding on Ovr Head Cabs
- * 40" Ovr Head and 36" Base Cabinets T/out with Maple Interior
- Screw Dowel Cabinet System w/ Dado Side Panels
- Knobs on Cab Doors & Drawers
- Bank of Drawers in the Kitchen
- 2 Door Std Depth Refrigerator Overhead Cabinet
- Laminate Counter Top & 4" backsplash w/ Square Selfedge

Utility Room

- Carrier High Efficiency Gas Furnace (95%)
- 40 Gallon Gas Water Heater
- Hinged Exterior Water Heater & Furnace Door (Per Plan)

Utility Room (continued)

- STD Plumb, Wire & Vent for Washer/Gas Dryer (Stackable Per Plan)
- STD Pex Hot & Cold Uponor System Plumbing Lines
- STD Metal Shut Off Valves at Washer
- STD Metal Dryer Vent to Exterior
- STD Wall Mount FAU Return Air Grill (per plan)
- STD Wood Shelf Above Side by Side Washer-Dryer

Electrical

- STD 100 Amp Interior Panel Box (Most Plans)
- STD Ecobee Self Programing Thermostat
- STD Smoke Detectors / Carbon Monoxide Hard Wired W/ Battery
- STD Electrical Boxes Nailed to Wall Studs
- STD Ext. GFI Plug at Front Door, Rear Door and/or Porch per plan
- STD Ceiling Exhaust Fan in bathrooms
- STD Rocker Light Switches
- STD Traditional Round Face 15 Amp Recepts (most areas)
- STD Designer Rectangle Face GFI Recepts
- STD Exterior Wall Light at Sidewall Doors
- STD Switched Recept in Bedrooms
- STD LED Lights (2) in Porch Soffit & (1) Recessed Entry Soffit per plan
- STD LED Can Lights in Kitchen, Din Rm, Utility Rm per plan
- STD LED Lights in Formal Entry, Hall, Din Rm, WIC, WI Pantry per plan
- STD Bath Wall Light Centered Above Countertop

Bathrooms

- STD Elongated Toilet Both Baths
- STD Laminate Counter Top w/ Square Edge & 4" Bksplash
- STD Top Mount 21"x 18" White China Rectangle Sink
- STD Tall Mirror w/ J-Rail & Clips
- STD Water Shut-off Valves at Sinks & Toilets
- STD Towel Bar & Tissue Holder
- STD Fiberglass 1pc Tub Shower Combo (per plan)

Floor Coverings

- STD Luxfloor Vinyl T/Out in Single Section Hms
- STD Luxfloor Vinyl in Liv Areas, Entry Foyer and Wet Rooms
- STD Plush Carpet in All Bedrooms, Additional Areas Per Plan
- STD 2-1/2" Craftsman Base Boards T/Out
- STD White Floor Grills in Dry Rooms

Interior Doors

- STD 6-Panel Colonist Interior Passage and Wardrobe Doors
- STD Utility Rm Door To Hall (when air grill at FAU wall)
- STD Louvered Utility Room Door (per plan)
- STD Mortice Triple Hinge Interior Doors
- STD Craftsman Door Casing (T-cut 2-1/2" / 4-1/2")
- STD Brushed Nickel Round Knob Locksets & Privacy Locks at Baths

Interior

- STD Orange Peel Textured Ceiling and Walls Throughout (1/2")
- STD Sheetrocked Tub/Shower Flanges
- STD White Scrubbable Flat Interior Wall & Ceiling Paint
- STD Square Drywall Corners
- STD Return Air Grill Above Interior Doors
- STD Wood Shelves in Wardrobes, (4) Pantry & Linen Closets per plan

Insulation

- STD Energy Star V2 Insulation R-38 Roof R-13 Walls R-22 Floor
- STD Energy Star (R-8) Cross-Over Duct