

Champion Home Builders, Inc.  
 499 W. Esplanade  
 SAN JACINTO, CA 92583  
 Phone: 951-654-9321  
 Fax:



**Quote - Revision 13**  
**No.: SR001618**

Quote Date: 03/04/21  
 Retailer P.O.:  
 Order Type: Retail  
 Retail Customer: Taylor Park La Habra  
 Req. Del. Date:  
 Zone Manager: Dawn Jorgensen  
 Brand: Amber Cove  
 Model No.: 67 4607 CT  
 Base Home: 56X20 2CK 2B  
 Model Year: 2022  
 Model Size: 56'0" X 19'8"  
 Construction Type: HUD

Bill To: 1062CA  
 Stewart Homes, Inc.  
 5 Star Homes  
 11810 Beach Blvd  
 Stanton, CA 90680

Sell To: 1062CA  
 Stewart Homes, Inc.  
 5 Star Homes  
 11810 Beach Blvd  
 Stanton, CA 90680  
 Michael Stewart  
 Phone: (714) 891-6383, Fax: (714) 891-8120  
 Email: laura@5starhomes.com

Shipping Agent:  
 Shipping County: TULARE  
 FOB: Factory

Ship To:  
 AUGUSTA COMMUNITIES  
 26814 S MOONEY BLVD  
 SPACE# C94  
 VISALIA, CA 93277

Mod	Mod Type	Width	Length	Height	Story	CommWall	Joist	Spacing	Roof Type	Width	Length	Pitch	Spacing
A		9'10"	56'0"	0'0"		0'0"		0		0'0"	0'0"	0	0
B		9'10"	56'0"	0'0"		0'0"		0		0'0"	0'0"	0	0

Feature	Option	Variant	Description	Quantity	Ext. Price
---------	--------	---------	-------------	----------	------------

**Packages**

OTHER	OP001007		UPGRADE II APPL GAS SS PGK	1	2,480.00
-------	----------	--	----------------------------	---	----------

**Construction**

PLAN	OP000895		PLANT DRAWN CUSTOM PRINTS	1 EA	
			<i>~ BUILD PER PRINT</i>		
STRECHLNG	OP000528		12" STRETCH PER FT PER FLR	8 EA	4,800.00
			<i>~ BUILD PER PRINT</i>		
SWALLHT	OP000558		9' SIDEWALL W/FLAT CEILING	56 LF	2,576.00
ROOFLOAD	OP000036		20# ROOF	1 EA	Standard
ROOFPITCH	OP000049		3/12 ROOF PITCH	1 EA	Standard
EAVESFRNT	OP001029		12" FRONT HOOD	1 EA	Standard
EAVESBACK	OP001030		12" REAR HOOD	1 EA	Standard
EAVES	OP001097		NO EAVES	1 EA	Standard
ROOFINS	OP000039		R-33 ROOF INS	1 LF	Standard
WALLINS	OP000044		R-11 INS W/ 2X4 WALLS	1 LF	Standard
FLOORINS	OP000043		R-22 FLOOR INS	1 LF	Standard
FLOORDECK	OP000832		T&G OSB FLOOR DECKING	1 EA	Standard
OTHER	OP000211		BEDROOM ADD'L W/CLOSET	1 EA	1,750.00
			<i>~ 3RD BEDROOM OPTION BUILD PER PRINT</i>		
OTHER	OP001112		CRS ITEM	795 EA	795.00
			<i>~ FLIP UTILITY &amp; GBATH</i>		
			<i>~ BUILD PER PRINT</i>		

Champion is a registered trademark of Champion Home Builders, Inc.

Buyer: _____	Date: _____	Seller: _____	Date: _____
--------------	-------------	---------------	-------------

Feature	Option	Variant	Description	Quantity	Ext. Price
<b>Construction Continued ...</b>					
OTHER	OP001568		METAL ROOF VENT & DRYER VENT	1 EA	Standard
<b>Exterior</b>					
SIDING	OP000081	Smokey Sage	VERTICAL	1 EA	Standard
FASCIA	OP000078	Oatmeal	HARDI FASCIA	1 EA	Standard
TRIM	OP001035	Oatmeal	3" WINDOW TRIM	1 EA	Standard
SHINGLES	OP000080	Earthtone Cedar	ARCHITECTURAL SHINGLES	1 LF	Standard
<b>Windows</b>					
EXTERIOR	OP000125		VINYL DUAL PANE LOW-E WINDWS	1 EA	Standard
MBATH	OP001057		MBATH WINDOWS PER FL PLAN	1 EA	Standard
	~ PER PRINT				
HALLBATH	OP001056		HALLBATH WINDOWS PER FL PLAN	1 EA	Standard
	~ PER PRINT				
<b>Exterior Doors</b>					
FRONTDOOR	OP000072		K-1 36X80 FBG-DOOR 6 PANEL	1 EA	Standard
	~ PER PRINT				
REARDOOR	OP000076		K-4 32X80 FBG DOOR 9-LITE	1 EA	Standard
	~ PER PRINT				
<b>Electrical</b>					
MAINPANEL	OP000058		100 AMP MAIN	1 EA	Standard
ACPREP	OP000233		A/C READY	1 EA	90.00
EXT LIGHTS	OP000071		EXT BLK LIGHT FRONT DOOR	1 EA	Standard
	~ PART # 41015CF106028				
EXT LIGHTS	OP001092		EXT BLK LIGHT REAR DOOR	1 EA	Standard
	~ PART # 41015CF106028				
CEILINGLT	OP001348		4" LED CAN LIGHTS PER MODEL	1 EA	Standard
	~ PER PRINT				
	~ 7 TOTAL (STND)				
CEILINGOTH	OP000062		BF-21 CHANDLIER	1 EA	Standard
	~ PART # 41040FX102222				
	~ DIN RM				
OTHER	OP001194		PROGRAMMABLE THERMOSTAT	1 EA	Standard
OTHER	OP001349		USB RECEPT - KITCHEN	1 EA	Standard
GFI RECEPT	OP000067		1 EXTERIOR GFI	1 EA	Standard
	~ (2) TOTAL PER PRINT				
EXTRAGFI	OP000248		EXTERIOR GFI EXTRA	1 EA	78.00
	~ (2) TOTAL PER PRINT				
RECEP	OP000069		INTERIOR RECEPTS STD	1 EA	Standard
RECEPTSW	OP000833		3-WAY SWITCH HALL & UTIL	1 EA	Standard
	~ PER PLAN				
SWITCHES	OP000070		ROCKER SWITCH	1 EA	Standard
SMOKEDETECT	OP000066		SMOKE & C/O DETECTORS STD	1 EA	Standard

Feature	Option	Variant	Description	Quantity	Ext. Price
<b>Cabinets</b>					
THROUGHOUT	OP000024	<b>Butternut</b>	SHAKER CABINETS	1 EA	Standard
TYPE	OP000025		HARDWOOD	1 EA	Standard
MOLDING	OP000035		CABINET CROWN MOLDING	1 LF	Standard
			<i>~ MATCH CABINET STYLE</i>		
KITOVHRD	OP000126		42" OH W/ADJ CTR SHELF	1 EA	Standard
SHELVES	OP001094		WHITE-LINED ADJ SHELVES	1 EA	Standard
KITCHBASE	OP001233		NO DRAWER OVER DOOR	1 EA	Standard
DRAWERS	OP000031		1 DRAWER BANK KITCHEN	1 EA	Standard
WALLREFER	OP000028		24" DEEP REFER OH CABINET	1 EA	Standard
UPPERLOWER	OP000181		ADDITIONAL O/H CABINET PER FT	1 LF	120.00
			<i>~ KITCHEN BUILD PER PRINT</i>		
UPPERLOWER	OP000182		ADDITIONAL BASE CABINET PER FT	1 LF	120.00
			<i>~ KITCHEN BUILD PER PRINT</i>		
MBATH	OP000034		1 DRAWER BANK MBATH	1 EA	Standard
HARDWARE	OP000027		FULL EXTENSION DRAWER GUIDES	1 EA	Standard
PULLS	OP000026		CABINET KNOBS NICKEL	1 EA	Standard
OTHER	OP000175		LAZY SUSN BASE W/HINGED DR 32"	1 EA	415.00
			<i>~ PER PRINT</i>		

### Countertop

KITCHEN	OP000053	<b>Italian White di Pesc</b>	LAMINATE COUNTERTOP	1 SF	Standard
KIT EDGE	OP000055		LAMINATE CRESCENT EDGE	1 LF	Standard
MBATH	OP000053	<b>Italian White di Pesc</b>	LAMINATE COUNTERTOP	1 SF	Standard
MBATH EDGE	OP000055		LAMINATE CRESCENT EDGE	1 LF	Standard
HALLBATH	OP000053	<b>Italian White di Pesc</b>	LAMINATE COUNTERTOP	1 SF	Standard
HBATH EDGE	OP000055		LAMINATE CRESCENT EDGE	1 LF	Standard

### Kitchen

PANTRY	OP001143		PANTRY CAB/CLOSET PER PLAN	1 EA	Standard
			<i>~ W/ DRAWERS IN BOTTOM CELL</i>		
BCKSPL	OP000103		6" LAMINATE BACKSPLASH	1 LF	Standard
SINK	OP000100		STAINLESS STEEL SINK	1 EA	Standard
FAUCET	OP000101		CHROME S/L W/SPRAYER	1 EA	Standard
			<i>~ PART # 29863</i>		

### Appliances

REFER	OP000610		25CF SXS W/DISPSR SS IPO 18CF	1 EA	OP001007-C
			<i>~ WRS325</i>		
RANGE	OP000145		RANGE SELF CLN GAS SS IPO STD	1 EA	OP001007-C
			<i>~ WFG550</i>		
RNGHOOD	OP000157		MICROWAVE RNGE HOOD SS IPO STD	1 EA	OP001007-C
			<i>~ WMH31017</i>		
DISHWSHR	OP000132		DISHWASHER 4-CYCLE SS	1 EA	OP001007-C
			<i>~ WDF520</i>		

Feature	Option	Variant	Description	Quantity	Ext. Price
---------	--------	---------	-------------	----------	------------

**Appliances Continued ...**

GARBDISP	OP000134		GARBAGE DISPOSAL	1 EA	160.00
----------	----------	--	------------------	------	--------

**Floor Covering**

CARPET	OP000082	SELECT VARIANT	MANTRA CARPET	1 LF	Standard
	~ 100 FT ~ NEW BASIC MIX - SUNKISSED				
CARPETPAD	OP000084		3/8" REBOND	1 LF	Standard
KITCHEN	OP001486	Belleville	FORTRESS LINOLEUM	1 LF	Standard
UTILITY	OP001486	Belleville	FORTRESS LINOLEUM	1 LF	Standard
MBATH	OP001486	Belleville	FORTRESS LINOLEUM	1 LF	Standard
HALLBATH	OP001486	Belleville	FORTRESS LINOLEUM	1 LF	Standard

**Interior**

CEILINGFIN	OP000090		T&T D/W CEILING-GYPSUM	1 EA	Standard
DRYWALL	OP000056		T&T DRYWALL - GYPSUM WHITE	1 EA	Standard
OTHER	OP001031		SQUARE CORNER BEAD WALLS	1 EA	Standard
OTHER	OP001033		SQUARE CORNER BEAD WNDWS	1 EA	Standard
DRMOLDING	OP000099		2-1/4" PAINTED DOOR CASING	1 LF	Standard
BASEMLDG	OP000092		2-1/4" PAINTED BASE BOARD	1 LF	Standard
SHELVES	OP001072		DBL SHELF & ROD IN MBR CLOSET	1 EA	Standard
SHELVES	OP001073		SHELF & ROD IN GBR CLOSET	1 EA	Standard
WINCOVER	OP000096		2" FAUX WOOD BLINDS T/O	1 EA	Standard
WINTREAT	OP000098		FAUX WOOD VALANCE	1 EA	Standard

**Interior Doors**

DOORS	OP000087		2-PANEL DOORS	1 EA	Standard
HARDWARE	OP000088		LEVER LOCKSET	1 EA	Standard
POCKET	OP000375		24" OR 30" 2-PNL PCKT IPO STD	1 EA	245.00
	~ REQ 2X4 WALL ~ 30" @ GBATH ** FORCED OPTION				
WARDROBE	OP000889		WARDROBE DOOR PER MODEL	1 EA	Standard
	~ 2- PANEL @ MBED ~ 60" BY-PASS @ BED #2 & #3				
FURNDOR	OP000361		FURNACE DOOR - 2-PANEL IPO STD	1 EA	325.00

**Plumbing/Heating**

WASHDRYER	OP001470		PREP FOR STACK WASHER/DRYER	1 EA	Standard
	~ NO RECESSED BOX - GAS				
ICEPREP	OP000453		PLUMB FOR ICEMKER W/RECESS BOX	1 EA	OP001007-C
	~ NOTE: RECESSED BOX NOT AVAILABLE IF SHEAR WALL REQUIRED				
WH	OP000120		40 GAL GAS W/H	1 EA	Standard
FURNACE	OP000117		56K GAS DOWNFLOW	1 EA	Standard
HOSEBIB	OP000789		HOSE BIB	1 EA	145.00
	~ PER PRINT				

Buyer: _____	Date: _____	Seller: _____	Date: _____
--------------	-------------	---------------	-------------

Feature	Option	Variant	Description	Quantity	Ext. Price
---------	--------	---------	-------------	----------	------------

**Plumbing/Heating Continued ...**

REGISTER	OP000831	Brown	FLOOR HEAT REGISTERS	1 EA	Standard
REGISTER	OP001093		TOE KICK REGISTERS WET AREAS	1 EA	Standard

**Master Bath**

BCKSPL	OP000103		6" LAMINATE BACKSPLASH	1 LF	Standard
SINK	OP000108		OVAL TOP MOUNT	1 EA	Standard
SHOWER	OP000429		60" SHOWER IPO TUB/SHOWER	1 EA	215.00
	~ PART # 1603CTGN				
TSENCLOSE	OP001114	Clear	SHOWER ENCLOSURE	1 EA	
SINKFAUCET	OP000109		CHROME DUAL LEVER	1 EA	Standard
	~ PART # 29792				
	~ (2) TOTAL				
SHWRFAUCET	OP001082		S/L CHROME TRIM	1 EA	Standard
	~ PART # 29811				
TOILET	OP000111		ELONGATED W/CHROME SHUTOFF	1 EA	Standard
VANITYLT	OP000113		18" LIGHT STRIP	1 EA	Standard
	~ PART # 41055CF109222				
	~ (2) TOTAL				
VANMIRROR	OP000884		(2) 24" BEVLED MIRRORS IPO STD	1 EA	52.00
VENTFAN	OP000114		FAN W/LIGHT COMBO	1 EA	Standard
MEDCAB	OP001079		BEVELED MEDICINE CAB	1 EA	Standard
ACCESSORIE	OP000116		TOWEL BAR & RING/TISSUE HOLDER	1 EA	Standard
CABINET	OP000725		ENLARGE LAVY	1 EA	312.00
CABINET	OP000726		DUAL LAVY BOWL TO EXISTING CAB	1 EA	182.00

**Hall Bath**

BCKSPL	OP000103		6" LAMINATE BACKSPLASH	1 LF	Standard
SINK	OP000108		OVAL TOP MOUNT	1 EA	Standard
SHOWER	OP000110		1PC FIBERGLASS TUB/SHOWER	1 EA	Standard
	~ PART # 26033CCT				
TSENC	OP000760	Clear	TUB/SHOWER ENCLOSURE	1 EA	260.00
SINKFAUCET	OP000109		CHROME DUAL LEVER	1 EA	Standard
	~ PART # 29792				
SHWRFAUCET	OP001082		S/L CHROME TRIM	1 EA	Standard
	~ PART # 29811				
TOILET	OP000111		ELONGATED W/CHROME SHUTOFF	1 EA	Standard
VANITYLT	OP000113		18" LIGHT STRIP	1 EA	Standard
	~ PART # 41055CF109222				
VANMIRROR	OP000112		24" BEVELED MIRROR	1 EA	Standard
VENTFAN	OP000114		FAN W/LIGHT COMBO	1 EA	Standard
MEDCAB	OP001079		BEVELED MEDICINE CAB	1 EA	Standard
ACCESSORIE	OP000115		TOWEL BAR/TISSUE HOLDER	1 EA	Standard
CABINET	OP000739		LINEN CABINET OVER TOILET	1 EA	250.00

**Special Items**

MATCOST	OP001075		SHIP LOOSE PAINT PER GAL	5 EA	185.00
	~ (2) GAL EXT BODY =				
	~ (1) GAL EXT TRIM =				
	~ (2) GAL INT WALL/ CEILING = GYPSUM				

Buyer: _____	Date: _____	Seller: _____	Date: _____
--------------	-------------	---------------	-------------

Feature	Option	Variant	Description	Quantity	Ext. Price
---------	--------	---------	-------------	----------	------------

**Program & Fees**

WARRANTY	OP001171		12 Month Limited Warranty	1 EA	
WARRANTY	OP001317		EXT WARRANTY THRU YR7-ASSURANT	1 EA	

**Inflation Protection Plan**

DISCLOSURE	OP001480		IPP DISCLOSURE	1 EA	
------------	----------	--	----------------	------	--

*This home is subject to an Inflation Protection Plan (IPP) at the time of invoicing. The quoted amount includes an IPP surcharge of 10% above our base price. The final invoice price will be adjusted in accordance with IPP, but Retail Sold homes will not exceed the quoted price.*

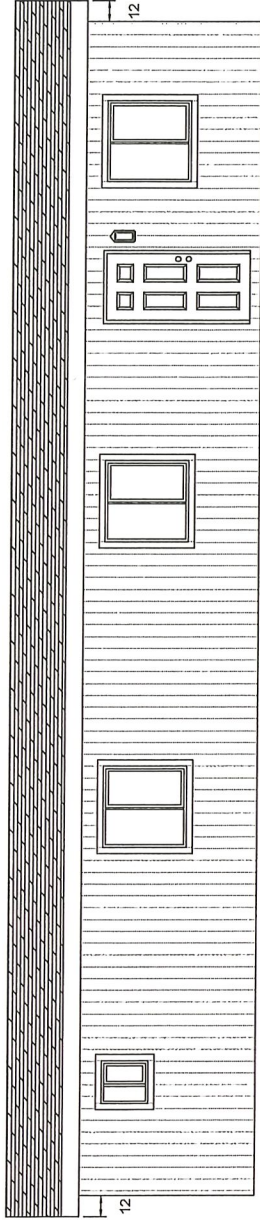
**MISCELLANEOUS CHARGES**

SURCHARGE	OP000002		SURCHARGE	1,101 SF	15,964.50
NOX	OP001181		NOX EMISSION FEES	1 D\$	200.00
MHIDUES	OP001123		MHI DUES	1 D\$	35.00
DUES	OP001182		CMHI Dues	1 D\$	200.00
DUES	OP001458		HUD Label Fees	1 D\$	122.00
INFLATION	OP001482		INFLATION PROTECTION PLAN	68,864.5 D\$	6,886.45
ENGFEEES	OP000515		DAPIA FEE	1 D\$	440.00

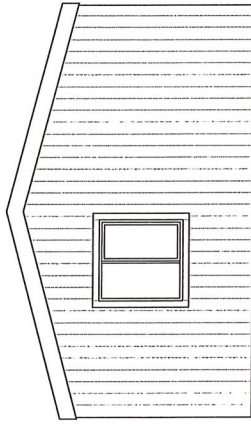
Requested By: Michael Stewart	BASE PRICE. . . . .	\$	52,900.00
It is the retailer's responsibility to verify the options and the pricing of the home.	OPTION TOTAL . . . . .	\$	15,555.00
Champion Home Builders, Inc. reserves the right to make changes at anytime in prices and specifications without notice and/or obligation.	MISCELLANEOUS CHARGES. . . . .	\$	23,847.95
SIGNED X _____	SALES TAX (IF APPLICABLE) . . . . .	\$	0.00
DATE _____	.....		
	TOTAL FREIGHT CHARGES . . . . .	\$	0.00
	<b>TOTAL PRICE . . . . .</b>	<b>\$</b>	<b>92,302.95</b>



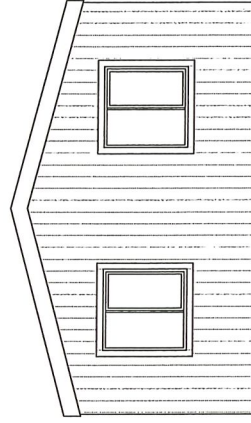
21-138H 5 STAR - TAYLOR LAHABRA



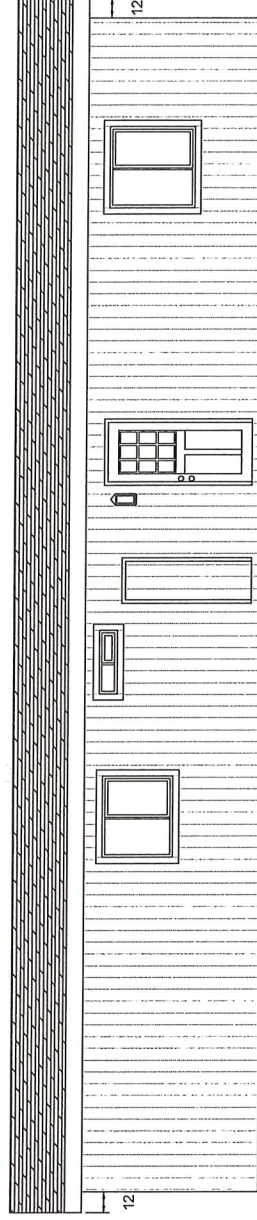
LEFT



REAR



FRONT



RIGHT

MODIFICATIONS

PROJECT: 4607CTC W14  
 56'-00" x 19'-08"  
 3 BD 2 BTH

DRAWN BY: DSTONE  
 DATE: 03-25-21  
 SCALE: 3/16" = 1'-0"

TITLE: EXTERIOR ELEVATION  
 PLAN

FILENAME: 21-138H-INK  
 NEW

SHEET:

L-102  
 21-138H

PROPRIETARY AND CONFIDENTIAL  
 SKYLINE ARCHITECTURE  
 PROPRIETARY AND CONFIDENTIAL MATERIALS OF CHAMPION  
 COPYRIGHT © 1979-2021 BY CHAMPION



499 W ESPLANADE AVE SAN JACINTO, CA 92583