

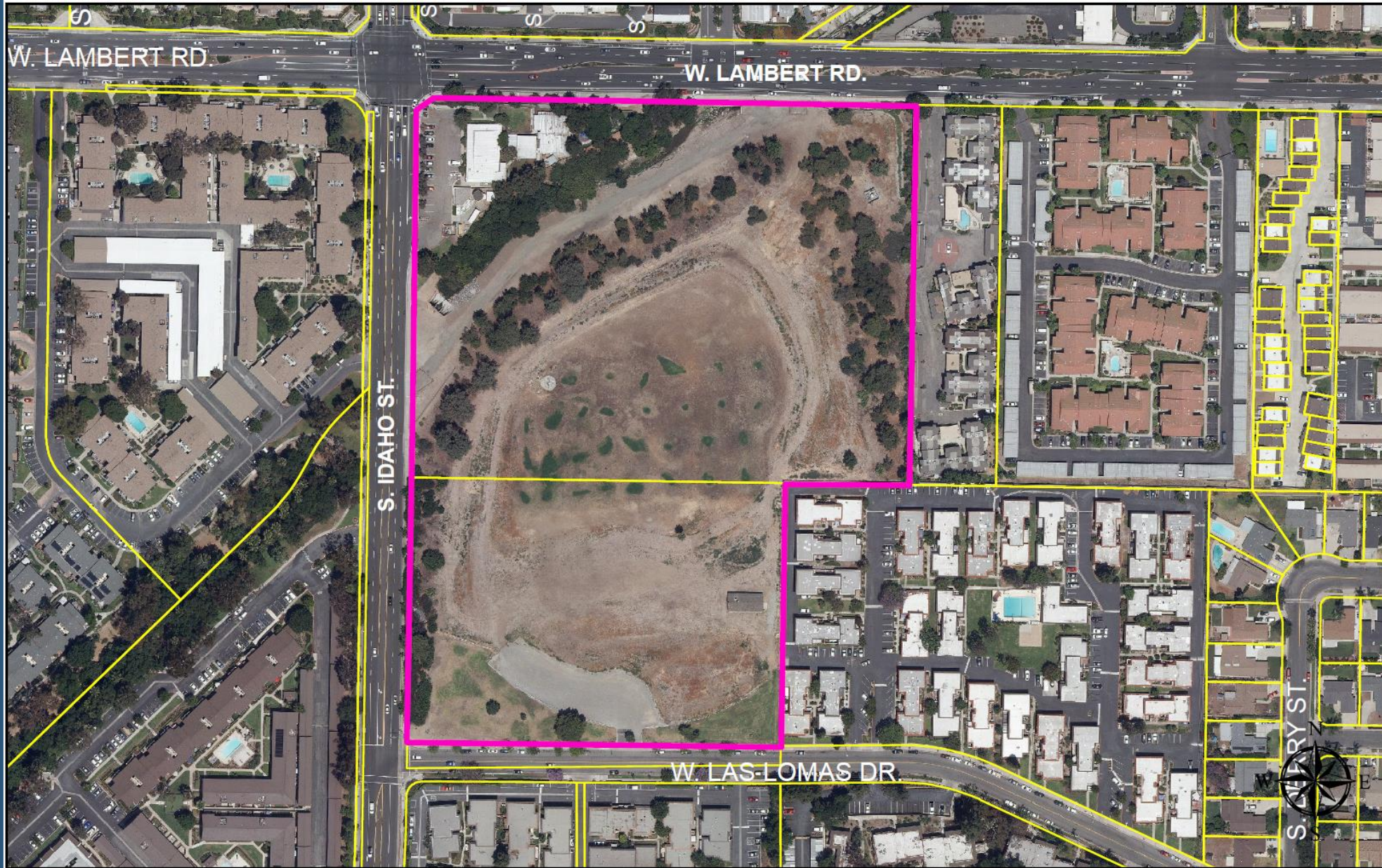


PLANNING COMMISSION MEETING

APRIL 25, 2022

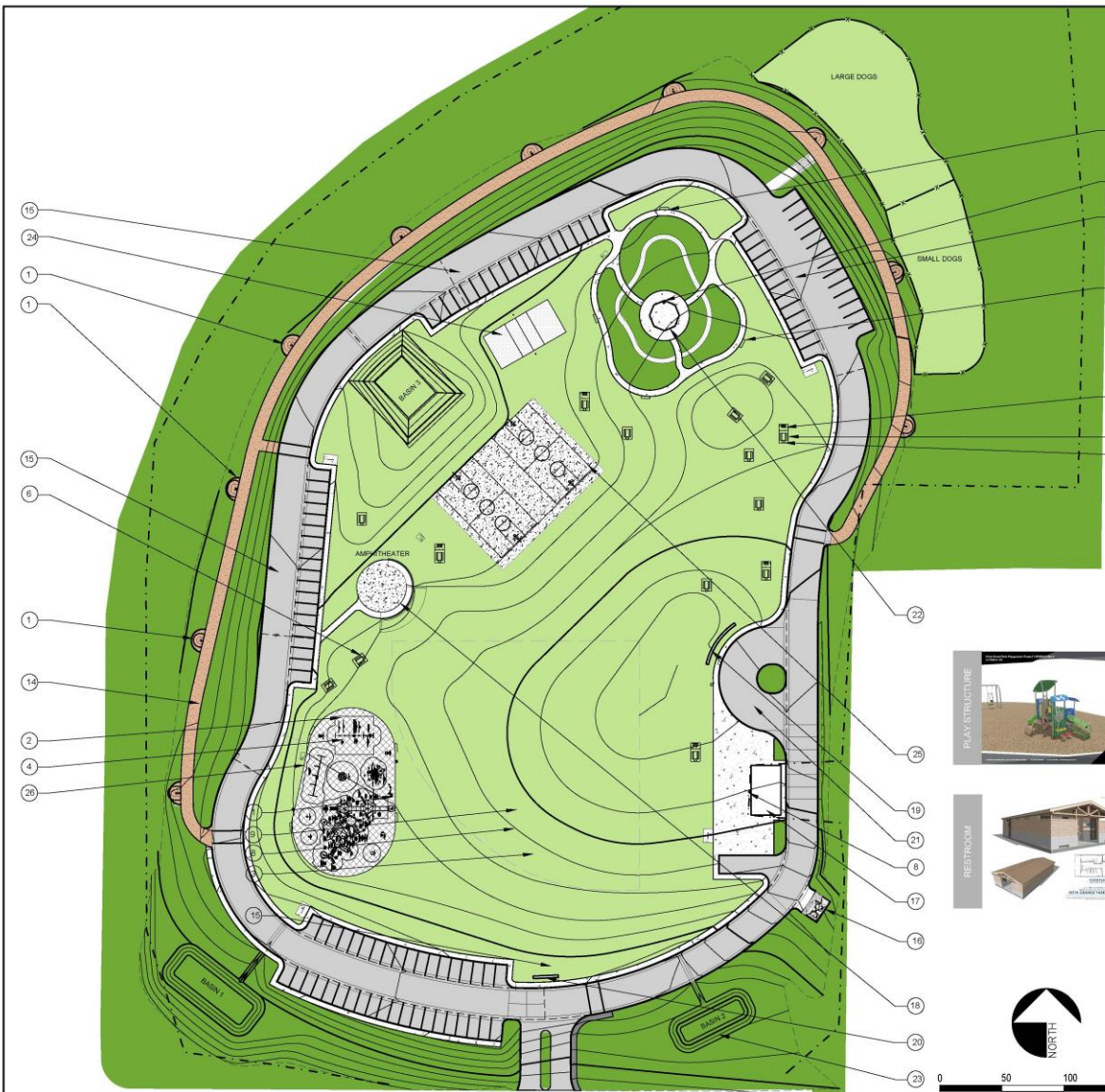
PUBLIC HEARING

DULY NOTICED PUBLIC HEARING FOR CONSIDERATION OF
DESIGN REVIEW 22-01 FOR THE VISTA GRANDE PARK
IMPROVEMENT PROJECT AT 1101 WEST LAS LOMAS DRIVE.



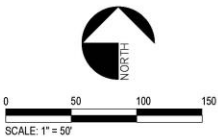
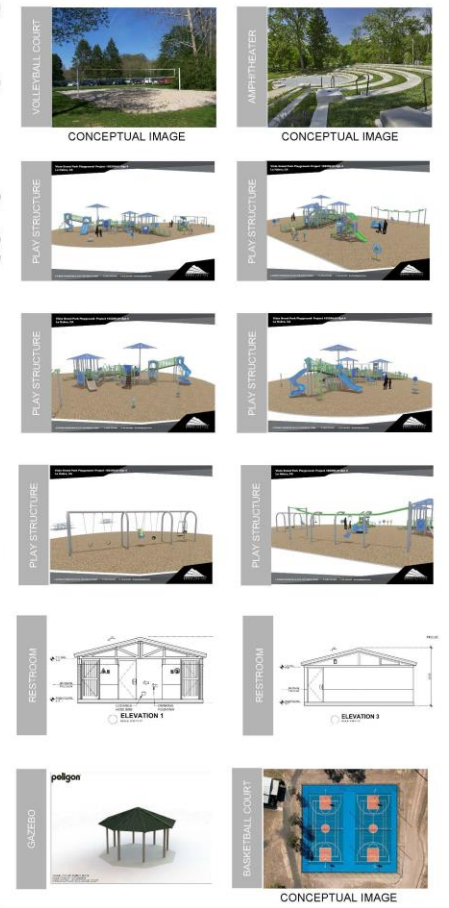
1101 W Las Lomas Dr





SYMBOL	ITEM	COLOR/ FINISH	COMMENTS	DETAIL
(PND)	CAST IN-PLACE CONCRETE PAVING	COLOR: HAWAII, BENCH FINISH LIGHT BROOM	RETRACT TREE 15' IF NECESSARY TO USE A FINISH OF FINISHED FOR PREVIOUS SECTION.	DETAIL #1 & #2 / SHEET L402
(PND)	CAST IN-PLACE CONCRETE PAVING WITH INTEGRAL COLOR	FINISH: COLOR: CONCRETE BIRD FINISH BROOM/COMPACT		DETAIL #1 & #2 / SHEET L401
(PND)	STABILIZED DECOMPOSED GRANITE	COLOR: CALIFORNIA GOLD / AVAIL. FROM SOUTHWEST BOLLARD	PROVIDE SAMPLES AND MOCKUP FOR APPROVAL.	DETAIL #1 / SHEET L401
(PND)	STABILIZED 50% STABILIZED GRANITE	AVAIL. FROM CORONA CLAY	PROVIDE SAMPLES AND MOCKUP FOR APPROVAL.	DETAIL #1 / SHEET L401
(PND)	AC PAVING SEE CIVIL PLANS			

- ### KEYNOTES LEGEND
- EXERCISE EQUIPMENT BY GREENFIELDS - 949-424-8857 www.gofitandfitness.com REFER TO DETAIL #3 / SHEET L402 & #2 / SHEET L403 CONTACT NAME: FRANK VASQUEZ
 - PLAY STRUCTURE / TOT LOT BY GREAT WESTERN RECREATION 1-805-910-5971 brandon@gwpark.com REFER TO DETAIL #3 / SHEET L406 CONTACT NAME: BRANDON SEITZ
 - RUBBER SURFACE BY ROBERTSON INC. 800.858.0519 www.totturf.com MODEL: TOTOTURF COLOR: XXX REFER TO DETAIL # 2 / SHEET L-402
 - SHADE STRUCTURE (CHILDREN'S PLAY AREA) BY GREAT WESTERN RECREATION 1-805-910-5971 brandon@gwpark.com CONTACT NAME: BRANDON SEITZ
 - BBQS - MODEL#: SF163SG / AVAIL. FROM KAY PARK / INSTALL PER MANUFACTURERS INSTRUCTIONS / QTY. -XX - FINAL LOCATION T.B.D. BY OWNER
 - PICNIC TABLE BY GREAT WESTERN RECREATION 1-805-910-5971 brandon@gwpark.com CONTACT NAME: BRANDON SEITZ MODEL: P592 AND P1309 (WHEEL CHAIR ACCESSIBLE)
 - TRASH RECEPTACLE W/ RECYCLED PLASTIC PLANKS & DOME LID - MODEL #: 1150-PLM1 / AVAIL. FROM PATTERSONWILLIAMS ATHLETIC / QTY. -XX REFER TO DETAIL # 1 / SHEET L402 - FINAL LOCATION T.B.D. BY OWNER
 - CONCRETE TRASH RECEPTACLES - MODEL#: QCP - CAL2534WH25 / COLOR: LATITE / QTY. - 9
 - 5'-0" PARK BENCH WITH ARM RESTS - BENCH MODEL #: 111640A-H / ARM REST MODEL #: 114767A / AVAIL. FROM LANDSCAPE STRUCTURES. - QTY. -XX REFER TO DETAIL # 7 / SHEET L401
 - BIKE RACK - MODEL #: VLBR-SERIES / POWDER COATED COLOR: BLUE / AVAIL. FROM LANDSCAPE STRUCTURES. REFER TO DETAIL # 6 / SHEET L401
 - DRINKING FOUNTAIN & WATER BOTTLE FILLER - DRINKING FOUNTAIN - MODEL #: 3202 GALVANIZED / AVAIL. FROM HAWS - WATER BOTTLE FILLER - MODEL #: 3377G / 3377BF, GALVANIZED / AVAIL. FROM HAWS REFER TO DETAIL #8 / SHEET L401
 - CAST-IN-PLACE CONCRETE PAVING - REFER TO DETAIL #1 & #2 / SHEET L401
 - PRECAST PAVERS - REFER TO DETAIL #3 / SHEET L401
 - STABILIZED DECOMPOSED GRANITE - REFER TO DETAIL #4 / SHEET L401
 - PARKING LOT AND CURB - REFER TO CIVIL PLANS
 - TRASH ENCLOSURE - REFER TO SHEET L404 & 405
 - RESTROOMS AND STORAGE BUILDING AVAIL. FROM PUBLIC RESTROOM COMPANY - REFER TO DETAIL #1 SHEET L403
 - AMPHITHEATER
 - COMMUNITY ART WALL
 - PARK ENTRY SIGN
 - FOOD TRUCK CIRCLE
 - POLYGON GAZEBO MODEL#: OCT-20 / AVAIL. FROM MIRACLE PLAYGROUND SALES 714-271-2963 www.miracleplayground.com/ / INSTALL PER MANUFACTURERS INSTRUCTIONS / QTY. -1 CONTACT NAME: JOHN JASON
 - FUTURE LOCATION OF JV SOFTBALL FIELD
 - VOLLEYBALL COURT
 - FUTSAL / BASKETBALL COURT
 - 4' FENCE AND GATE - REFER TO DETAIL #1 SHEET L406
 - 6' FENCE AND GATE - REFER TO DETAIL #2 SHEET L406



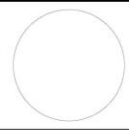
LAS LOMAS DRIVE

Troller Mayer Associates, Inc
 Landscape Architecture Planning Urban Design
 1403 Kenneth Road, Suite B
 Glendale, California 91201-1421
 Ph: (818)956-8101 Fx: (818) 956-0120
 E-mail: mayer@trollermayer.com

NO.	REVISION DESCRIPTION	BY



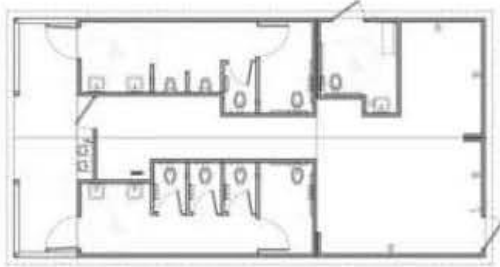
TETRA TECH
 21700 Copley Drive, Suite 200
 Diamond Bar, CA 91765
 TEL 909.860.7777 FAX 909.860.8017



LA HABRA LANDFILL VISTA GRANDE PARK CONSTRUCTION PLAN			
DESIGNED BY: TMA	DATE: 02-04-2022	SCALE: AS SHOWN	SHEET L-101 1 OF
DRAWN BY: TMA	DATE:	DATE:	
CHECKED BY: JM	DATE:	DATE:	
APPROVED BY: RM	DATE:	DATE:	

RESTROOM

PROJECT REF#: 11177-12/15/2021-0



FLOOR PLAN
SCALE: NOT TO SCALE

LA HABRA, CALIFORNIA RESTROOM/ STORAGE BUILDING VISTA GRANDE PARK

NOT A CONTRACT. ALL DIMENSIONS AND FINISHES ARE APPROXIMATE. COLORS AND MATERIALS ARE SUBJECT TO CHANGE.
COPYRIGHT 2021, PUBLIC RESTROOM COMPANY. THIS DRAWING IS THE EXCLUSIVE PROPERTY OF PUBLIC RESTROOM COMPANY AND SHALL NOT BE REPRODUCED, COPIED OR OTHERWISE USED OR DISCLOSED TO OTHERS WITHOUT PERMISSION BY THE WRITTEN PERMISSION OF PUBLIC RESTROOM COMPANY.



www.PublicRestroomCompany.com
2507 BUSINESS PARKWAY
MINCHEN, NEVADA, 89423
P: 888-888-2000 T: 888-888-1440

RECOMMENDATION

A RESOLUTION OF THE PLANNING COMMISSION OF THE CITY OF LA HABRA APPROVING DESIGN REVIEW 22-01 TO CONSTRUCT PARK IMPROVEMENTS AT 1101 WEST LAS LOMAS DRIVE, AS PER THE APPROVED PLAN, MAKING THE APPROPRIATE FINDINGS AND SUBJECT TO CONDITIONS.



THANK YOU!
