



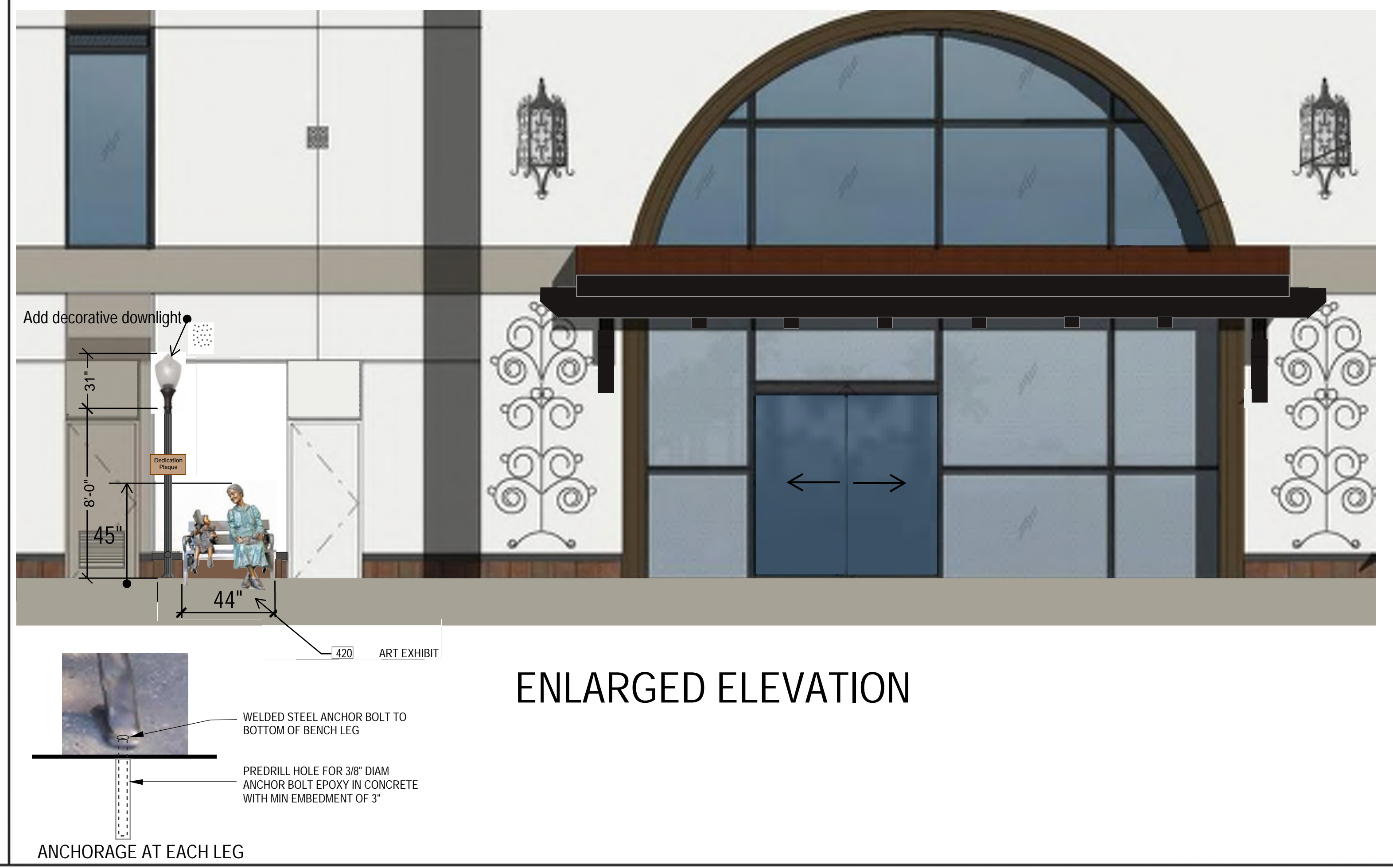
EAST EXTERIOR ELEVATION ③
SCALE: 1/8" = 1'-0"



NORTH EXTERIOR ELEVATION ①
SCALE: 1/8" = 1'-0"



WEST EXTERIOR ELEVATION ④
SCALE: 1/8" = 1'-0"



ENLARGED ELEVATION



"PRECIOUS MOMENT"

INSPIRATION FOR "PRECIOUS MOMENT"
by MAX TURNER, ARTIST/ SCULPTOR

Portraying family in a special moment between a Grandmother and child shows the relevance of developing relationships that can bring generations together at any age. Displaying these two people exhibit the importance of heritage in our communities. With this art sculpture, it provides insight into the past, present, and future that family is integral to our community.

LEGEND

- GLASS:**
- VISION GLASS
 - SPANDREL GLASS
 - TEMPERED GLASS

- MATERIALS:**
- EXTERIOR SMOOTH PLASTER FINISH WITH INTEGRAL COLOR OVER CMU WALL
 - SALTILLO WALL TILE TO MATCH EXISTING SHOPPING CENTER

- COLORS:**
- PROVIDE 6'-0" WIDE PAINT COLOR MOCK-UP FULL HEIGHT OF BUILDING FOR OWNER/ARCHITECT REVIEW.
- BASE COLOR: SHERWIN WILLIAMS SW7006 EXTRA WHITE
 - SECONDARY COLOR: SHERWIN WILLIAMS SW7036 ACCESSIBLE BEIGE
 - ACCENT COLOR: SHERWIN WILLIAMS SW7038 TONY TAUPE
 - ACCENT COLOR: SHERWIN WILLIAMS SW2735 ROCKWEED

KEYNOTES:

- SEE SHEET A0.2 FOR GENERAL NOTES
- 305 SPANISH TILE ROOF SYSTEM W/ FELT UNDERLAYMENT AND HIGH TEMPERATURE WRB.
 - 307 PACKAGE UNIT ON PREFABRICATED CURB. SEE MECHANICAL DRAWINGS.
 - 402 PLASTER CONTROL JOINT.
 - 405 ALUMINUM (ARCADIA CLEAR ANODIZED) STOREFRONT SYSTEM WITH 1" INSULATED GLASS.
 - 409 FINISH GRADE VARIES.
 - 410 LINE OF ROOF BEYOND.
 - 411 EIFS CORNICE AT PARAPET.
 - 412 EIFS CORNICE AT WINDOW HEAD TO MATCH WIDTH OF WINDOW.
 - 413 EXPOSED SPLIT-FACE CMU FINISH.
 - 414 SMOOTH EXTERIOR PLASTER FINISH OVER GYPSUM SHEATHING OVER METAL STUD.
 - 418 TENANT SIGNAGE (UNDER SEPERATE PERMIT).
 - 419 PRE-CAST CORNICE AT STOREFRONT WINDOW SYSTEM.
 - 420 ART EXHIBIT

WARE, MALCOLM
Leading Design for Commercial Real Estate

architecture
planning
graphics
civil engineering

10 Goldman
Irvine, CA 92618
Tel: 949.863.1881
Fax: 949.863.1881

HERITAGE LA HABRA
CORE & SHELL
1201 W. WHITTIER BLVD.
LA HABRA, CA 90631

ART SUBMITTAL

DATE: 08/30/2022
REMARKS:
P.A.P.M.: A. ZERTUCHE
DRAWN BY: D. REYNOLDS
JOB NO.: IRV19-3021-00

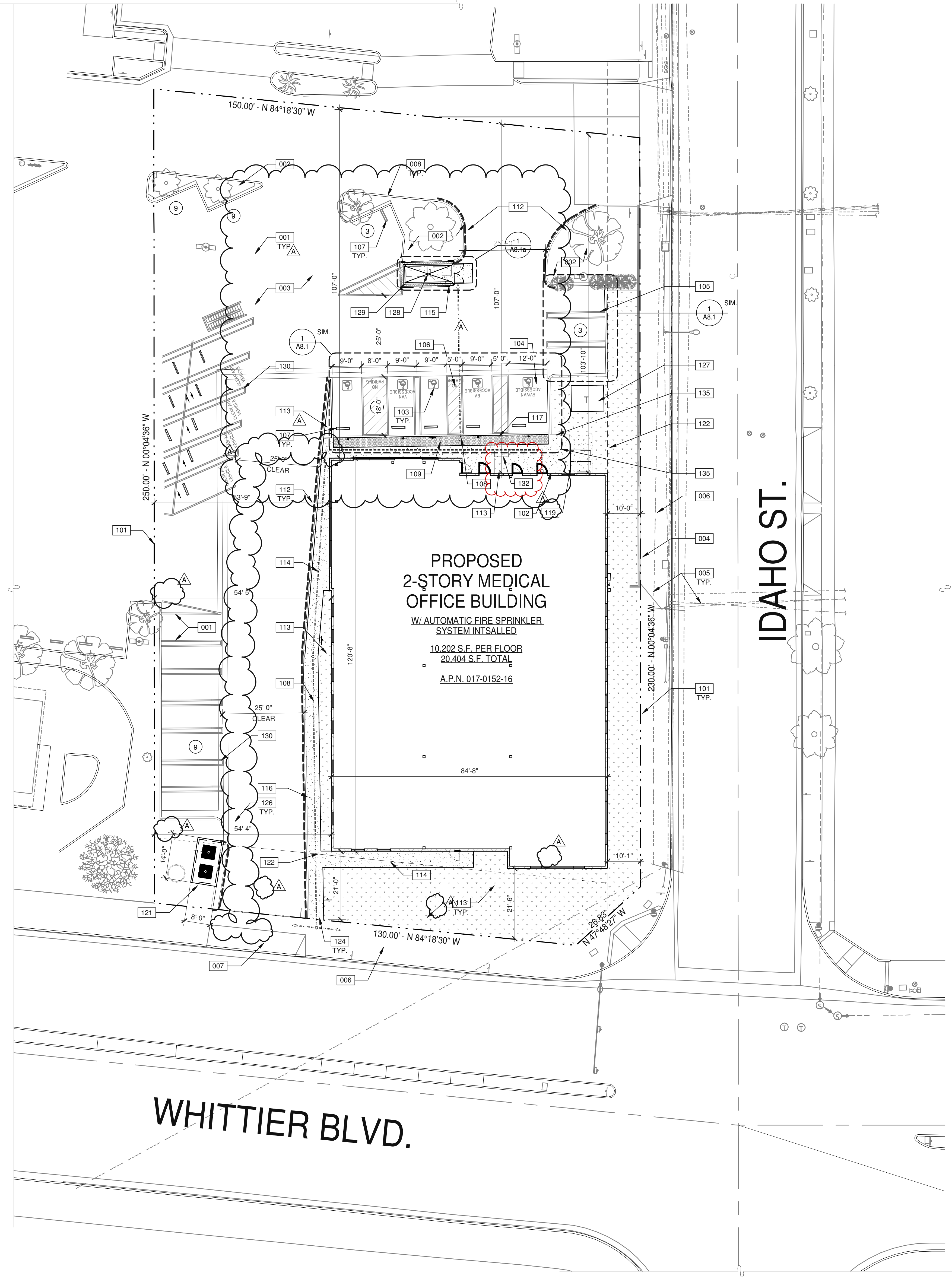
SHEET
ART
1.0

KEYNOTES:

- SEE SHEET A0.2 FOR GENERAL NOTES
- 001 EXISTING PARKING STRIPING TO REMAIN.
 - 002 EXISTING LANDSCAPING TO REMAIN.
 - 003 EXISTING ASPHALT PAVING TO REMAIN.
 - 004 EXISTING RETAINING WALL W/ METAL RAILING TO REMAIN.
 - 005 EXISTING OVERHEAD POWER LINES TO REMAIN.
 - 006 EXISTING SIDEWALK AT RIGHT OF WAY.
 - 007 EXISTING DRIVEWAY TO REMAIN.
 - 008 EXISTING CONCRETE CURB TO REMAIN.
 - 101 PROPERTY LINE.
 - 102 ACCESSIBLE ENTRY SIGNAGE.
 - 103 ACCESSIBLE PARKING STALL WITH SIGNAGE.
 - 104 VAN ACCESSIBLE PARKING STALL WITH SIGNAGE.
 - 105 PAINTED PARKING STRIPING PER CITY STANDARDS.
 - 106 PAINTED 4" BLUE STRIPING PER CITY STANDARDS.
 - 107 PRECAST CONCRETE WHEELSTOP.
 - 108 ACCESSIBLE PATH OF TRAVEL. 1:20 MAX. SLOPE, 2% MAX. CROSS SLOPE. SEE CIVIL DRAWINGS.
 - 109 ACCESSIBLE CURB RAMP.
 - 112 FIRELANE CURB, DASHED LINE INDICATES EXTENT OF CONTINUOUS CURB TO BE PAINTED RED.
 - 113 LANDSCAPE AND IRRIGATION AREA. SEE LANDSCAPE DRAWINGS.
 - 114 CONCRETE SIDEWALK. SEE CIVIL DRAWINGS.
 - 115 7'-4"x16'-0" TRASH ENCLOSURE WITH ROOF TO MATCH SHOPPING CENTER PER CITY STANDARDS.
 - 116 CONCRETE CURB. SEE CIVIL DRAWINGS.
 - 117 TRUNCATED WARNING DOMES.
 - 119 BIKE LOCKER (2 BIKES PER FOOTPRINT) ON CONCRETE PAD, AMERICAN BICYCLE SECURITY COMPANY.
 - 121 FILTERRA BY CONTECH FILTRATION SYSTEM. SEE CIVIL PLANS.
 - 122 LINE OF REQUIRED BUILDING SETBACK, VARIES BY SIDE.
 - 124 ACCESSIBLE ACCESS TO RIGHT OF WAY.
 - 126 CARTTRONICS SHOPPING CART THEFT PREVENTION WIRING LOOP (BY OWNER VENDOR).
 - 127 TRANSFORMER WITH CONCRETE PAD. (PROVIDE PROTECTION BOLLARDS PER LOCAL UTILITY OR PUBLIC WORKS STANDARDS).
 - 128 SLOPE TRASH ENCLOSURE SLAB TO DRAIN. SEE PLUMBING DRAWINGS.
 - 129 HOSE BIBB FOR TRASH BIN WASH DOWN. SEE PLUMBING DRAWINGS.
 - 130 EXISTING STRIPING TO BE REPAINTED AFTER REPAIRING.
 - 132 ART SCULPTURE LOCATION.
 - 135 PROPOSED BIKE RACK PER LANDSCAPE PLANS.

SITE LEGEND

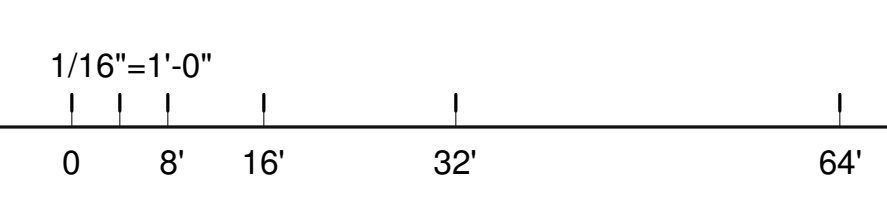
- ACCESSIBLE PATH OF TRAVEL. 1:20 MAX. SLOPE, 2% MAX. CROSS SLOPE.
- PROPERTY LINE.
- FIRE LANE CURB PAINTED RED WITH "FIRE LANE" PAINTED IN WHITE
- LANDSCAPE AND IRRIGATION AREA.
- FIRE LANE (HATCHED)
- TRANSFORMER WITH CONCRETE PAD. (PROVIDE PROTECTION BOLLARDS PER LOCAL UTILITY OR PUBLIC WORK STANDARDS)
- POLE MOUNTED SITE SIGNAGE
- POLE MOUNTED LIGHT FIXTURE.
- FIRE HYDRANT
- P.I.V. WITH TAMPER
- FIRE DEPARTMENT DDC
- PARKING STALL COUNT TOTAL
- EXISTING LANDSCAPE TO REMAIN
- NEW LANDSCAPE TO REMAIN



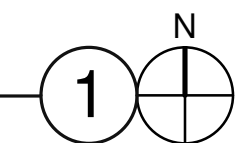
**PROPOSED
2-STORY MEDICAL
OFFICE BUILDING**
W/ AUTOMATIC FIRE SPRINKLER
SYSTEM INSTALLED
10,202 S.F. PER FLOOR
20,404 S.F. TOTAL
A.P.N. 017-0152-16

IDAHO ST.

WHITTIER BLVD.



SITE PLAN



SCALE: 1/16" = 1'-0"

WARE MALCOLM
Leading Design for Commercial Real Estate

architecture
planning
graphics
civil engineering

10 Goldman
Irvine, CA 92618
Tel: 949.261.1100
Fax: 949.863.1351

**HERITAGE LA HABRA
CORE & SHELL**
1201 W. WHITTIER BLVD.
LA HABRA, CALIFORNIA 90631

SITE PLAN

DATE	REMARKS
05/12/2020	50% CD SET
07/15/2021	FINAL PLANS DEPARTMENT SUBMITTAL
07/15/2021	FINAL CHECK/RESUBMITTAL

P.A.P.M.	C. DIONNE
DRAWN BY:	C.S. / C.B.
JOB NO.:	IRV19-3021-00

SHEET
A1.1

Pedestrian light pole spec

Submitted by California Lighting Sales		Catalog Number: D136 AP24PC-CL (LED) (DIST) (CODE) CLB	Type: EX1 CLS16-160076
	Job Name: LA HABRA TOWNE CENTER - RETAIL BUILDING CANOPY FACE LIFT - SITE Architect: Courtney & Le Architects - Monrovia (Monrovia)	Notes:	

AP24 LED SERIES LUMINAIRE

U41.16

DESCRIPTION:

Lighting for exterior retail, commercial and hospitality environments. The AP24 Series consists of a decorative acorn combined with one of several styles of cast aluminum fitters.

LED LUMINAIRE:

Multiple LED systems available with convection cooled driver, options for intensity, distribution and color. They operate with over voltage and short circuit protection and automatic voltage sensing for 120 to 277v input. (See next page for LED availability)

- 50,000+ hours of operational life
- Warm 3000K, neutral 4000K, or cool white 5000K color
- Dimmable (controller by others)
- Suitable for wet locations

ETL listed, suitable for wet locations.

INSTALLATION:

The luminaire will mount to a 3" OD post or tenon with 5/16" black oxide coated stainless steel set screws to ensure a solid connection. The diffuser will be held to the fitter by (4) 1/4-20" black oxide coated stainless steel captive set screws.

DIFFUSER CHOICES:

- Clear Textured Polycarbonate (PC-CL)
- White Textured Polycarbonate (PC-WH)
- Clear Textured DR Acrylic (DR-CL)

FINISH

Premium quality thermoset polyester powdercoat for a durable finish in the following:

- | | |
|-----------------------------|----------------------------|
| BLK - Satin Black | GTB - Gloss Textured Black |
| CLB - Classic Bronze | TBK - Textured Black |
| GBZ - Gloss Textured Bronze | TGR - Gloss Textured Green |
| GRN - Green | |



Ordering information:

Model	Diffuser Material-Color	LED System	Light Distribution	Order Code	Finish	Option
D131/AP24	PC-CL PC-WH DR-CL	AVI VLE	AS SY	3H,4H,5H 3L,4L,5L	BLK CLB GBZ GRN GTB TBK TGR Custom	BB BB-FW CFIN PCL
D133/AP24						
D134/AP24						
D135/AP24						
D136/AP24						
D137/AP24						
D138/AP24						
D139/AP24						
		VERIFY	VERIFY	VERIFY		

See next page for more complete LED ordering options

800.364.0098 • Fax: 261.997.5441 • www.amerlux.com

Amerlux reserves the right to change details that do not affect overall function and performance.

AP24
LED



PROJECT:

TYPE:



5 year limited warranty



Part String

Example: D131/AP24/PC-CL/AVI-SY-3H/BLK

amerlux

Products > Exterior > Post Top Luminaires > [AP24 Series](#)

AP24 Series



AP24-D136

Submitted by California Lighting Sales


**Job Name:**
 LA HABRA TOWNE CENTER - RETAIL BUILDING
 CANOPY FACE LIFT - SITE
 Architect: Courtney & Le Architects - Monrovia
 (Monrovia)
Catalog Number:
 D136 AP24PG-CL (LED) (DIST)
 (CODE) CLB

Notes:


Type:**EX1**

CLS16-166676

LED Options (bold indicates ordering code)

LED System	Light Distribution	Code	CCT	CRI	Light Engine Lumens	Nominal Input Power	
 AVI	SY (Symmetric)	3H	3,000K	80	4,450 lm	60W	
		4H	4,000K	80	5,100 lm		
		5H	5,000K	70	5,870 lm		
	AS (Asymmetric)	3H	3,000K	80	4,410 lm		41W
		4H	4,000K	80	5,050 lm		
		5H	5,000K	70	5,810 lm		
	SY	3L	3,000K	80	2,940 lm	41W	
		4L	4,000K	80	3,450 lm		
		5L	5,000K	70	4,070 lm		
	AS	3L	3,000K	80	2,910 lm		41W
		4L	4,000K	80	3,420 lm		
		5L	5,000K	70	4,030 lm		

Example: D131/AP24/PC-CL/AVI-SY-3H/BLK

LED System	Light Distribution	Order Code	CCT	CRI	Light Engine Lumens	Nominal Input Power	Dimmable
 VLE	SY (Symmetric)	3H	3,000K	80	5,600 lm	80W	0-10V
		4H	4,000K	80	5,700 lm		
		5H	5,000K	70	6,000 lm		
	AS (Asymmetric)	3H	3,000K	80	4,200 lm	60W	
		4H	4,000K	80	4,300 lm		
		5H	5,000K	70	4,500 lm		
	SY	3L	3,000K	80	3,000 lm	40W	
		4L	4,000K	80	3,300 lm		
		5L	5,000K	70	3,600 lm		
	AS	3L	3,000K	80	2,200 lm	30W	
		4L	4,000K	80	2,600 lm		
		5L	5,000K	70	2,800 lm		

Example: D131/AP24/PC-CL/VLE-SY-3H/BLK



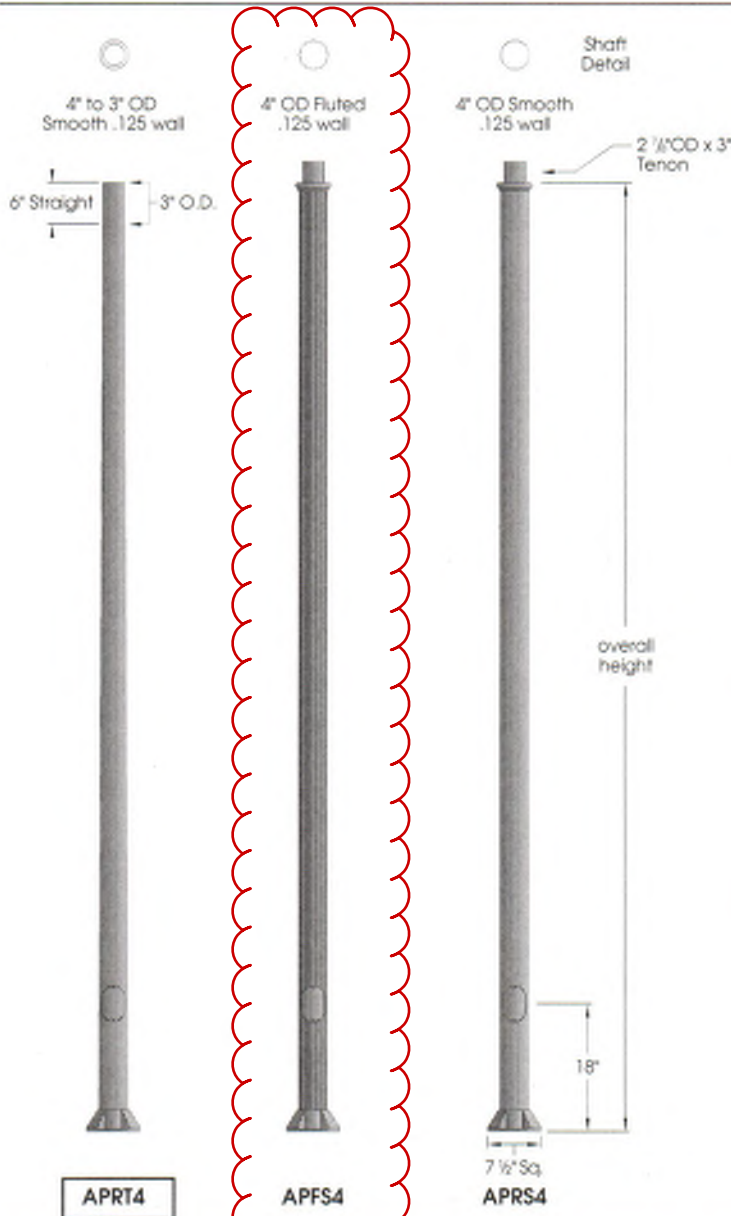
Job Name:
LA HABRA TOWNE CENTER - RETAIL BUILDING
CANOPY FACE LIFT - SITE
Architect: Courtney & Le Architects - Monrovia
(Monrovia)

Notes:

CLS16-166676

4" Extruded Series

U.1.11.16



Features:

7 1/2" square cast aluminum base flange

Choice of extruded shafts (.125 wall)

- 4" to 3" tapered smooth
- 4" OD fluted (12 flutes)
- 4" OD smooth round

Extruded shaft is circumferentially welded to the base

A 2x4" handhole with curved lap style aluminum door and two stainless steel self-tapping screws is standard. A grounding provision incorporating a tapped 1/8" 20NC hole is provided opposite the handhole.

Ground lug provided inside base

Materials:

Base - Cast aluminum (356-T6)
Shaft - Extruded Aluminum (6063-T6)
- Tapered Aluminum (6063-T6)
Anchor Bolts - Hot dipped galvanized steel

Finish:

Premium quality thermoset polyester powdercoat for a durable finish.



4-COV

APRT4	APFS4	APRS4	Overall Height	Finish	Accessories
APRT4-08	APFS4-08	APRS4-08	8'-0"	BLK	4-COV
APRT4-10	APFS4-10	APRS4-10	10'-0"	CLB	BAT8
APRT4-12	APFS4-12	APRS4-12	12'-0"	GBZ	BA24
APRT4-14	APFS4-14	APRS4-14	14'-0"	GRN	FPH-4
APRT4-16	APFS4-16	APRS4-16	16'-0"	GTB	FPH-5
				TBK	GFCI
				TGR	

See next page for more complete accessory options

800.364.0096 • Fax: 281.997.5461 • www.amerluxexterior.com

Amerlux reserves the right to change details that do not affect overall function and performance.

Part String

Example: APRT4-10/BLK





Job Name:

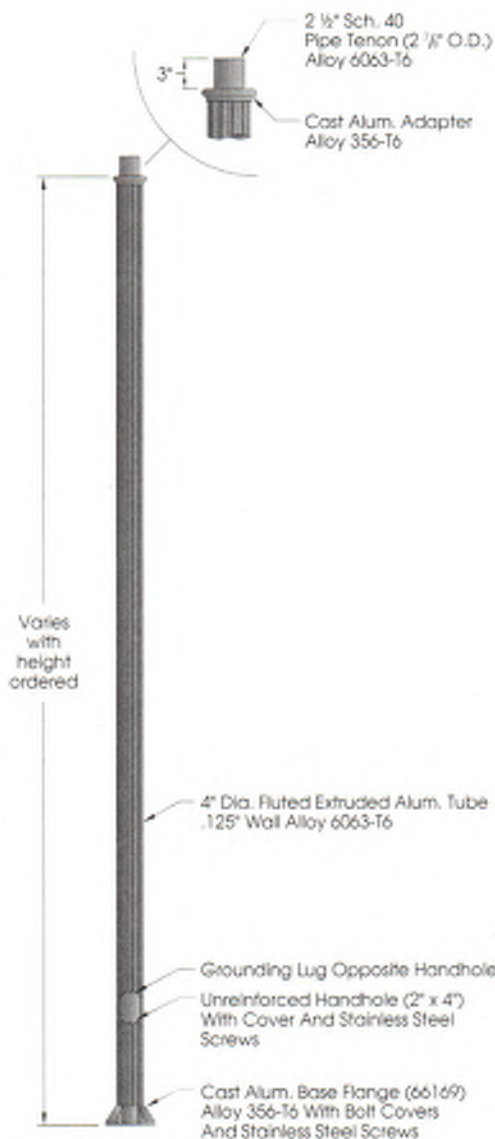
LA HABRA TOWNE CENTER - RETAIL BUILDING
CANOPY FACE LIFT - SITE
Architect: Courtney & Le Architects - Monrovia
(Monrovia)

APRT4-10-CLB / 4-COV-ELB

Notes:

EX1

CLS16-168676



Finish

The post will be finished with an electrostatically applied thermoset polyester powder coat. Prior to finishing, the parts are thoroughly cleaned. Our powder coat finish is durable, long lasting, attractive and scratch resistant as well as environmentally friendly. We offer 6 stock finishes or hundreds of special order colors including custom matching for existing projects (additional charges apply).

BLK - Satin Black

GTB - Glass Textured Black

CLB - Classic Bronze

TBK - Textured Black

GBT - Glass Textured Bronze

TGR - Glass Textured Green

GRN - Green

Accessories

See "Accessories" section for more information

Banner Arms

Single or double sided field rotatable banner arms.
BA18 (18") or BA24 (24") banner arms
FRC4 (4"OD shaft) or FRC5 (5"OD shaft)
Add a (2) for a double arm. Example: 2BA18-FRC4



FPH-4

Extruded aluminum holder for 1" OD
flag poles. Available for 4" OD
non-tapered pole.



GFCI

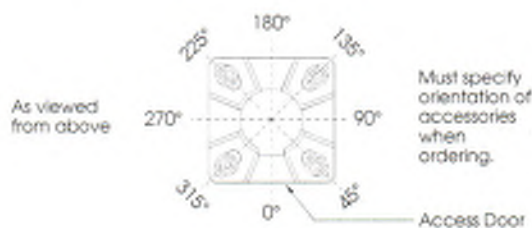
Ground fault circuit protected duplex outlet.
Available Recess mounted (GFCI-RM) as
shown or surface mount (GFCI-SM).



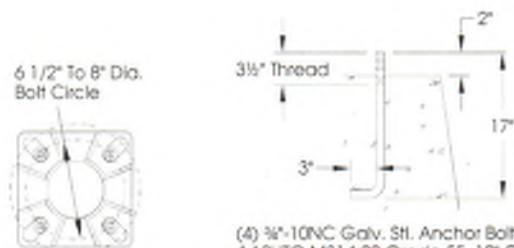
4-COV

Two piece cover is fabricated from
stamped and formed aluminum.

Accessory Orientation Guide



Anchor Details



(4) 3/8"-10NC Galv. Stl. Anchor Bolts,
AASHTO M314-90 Grade 55, 10" Of
Threaded End Galv. Per ASTM A153.
(4) 3/8"-10NC Galv. Stl. Hex. Nuts
(4) 3/8" Galv. Stl. Lockwashers
(4) 3/8" Galv. Stl. Flatwashers

Anchor bolts and templates can be
requested prior to product shipment.

Light Pole and Plaque

- Overlay on photo of existing site walkway light pole
- Plaque wording is still being reviewed by the Gonzales Family(ownership)
- Proposed verbiage under consideration:

- a. Health is the greatest of human blessings.
Hippocrates
- b. Wherever the art of medicine is loved, there is also a love of humanity.
Hippocrates

Plaque example:
-size 10"x8"

