

# DRAFT



*City of*  
**LA HABRA**  
AGENDA

LA HABRA  
COMMUNITY SERVICES COMMISSION

REGULAR MEETING  
WEDNESDAY, JANUARY 11, 2023  
6:30 P.M.

COUNCIL CHAMBER  
100 EAST LA HABRA BOULEVARD  
LA HABRA, CALIFORNIA 90631

CALL TO ORDER: Council Chamber

INVOCATION:

PLEDGE OF ALLEGIANCE:

ROLL CALL: Chair Kempker  
Vice Chair Garcia  
Commissioner Laveaga  
Commissioner Rojas  
Commissioner Schmidt

**PUBLIC COMMENTS:** When addressing the Commission, please complete a Speaker's Card before leaving the Council Chamber.

General Public Comments shall be received at the beginning of the governing body meeting and limited to three (3) minutes per individual, with a total time limit of 30 minutes for all public comments, unless otherwise modified by the Chair. Speaking time may not be granted and/or loaned to another individual for purposes of extending available speaking time, and comments must be kept brief, non-repetitive, and professional in nature.

The general Public Comment portion of the meeting allows the public to address any item of City business not appearing on the scheduled agenda. Per Government Code Section 54954.3(a), such comments shall not be responded to by the governing body during the meeting.

**CONSENT CALENDAR:**

All matters on Consent Calendar are considered to be routine and will be enacted by one motion unless a Commissioner, City staff member, or member of the audience requests separate action or removal of an item. Removed items will be considered following the Consent Calendar portion of this agenda. Public comment shall be limited to three (3) minutes per individual, with a total time limit of 30 minutes per item that has been removed for separate discussion, unless otherwise modified by the Chair. Speaking time may not be granted and/or loaned to another individual for purposes of extending available speaking time, and comments must be kept brief, non-repetitive, and professional in nature.

1. COMMUNITY SERVICES COMMISSION MEETING MINUTES  
That the Community Services Commission approve the meeting minutes of December 14, 2022.

**CONSENT CALENDAR ITEMS REMOVED FOR SEPARATE DISCUSSION:**

**CONSIDERATION ITEMS:**

Any member of the audience may request to address the Commission on any Consideration Item, prior to the Commission taking a final vote on the item. Public comment shall be limited to three (3) minutes per individual, with a total time limit of 30 minutes per Consideration Item, unless otherwise modified by the Chair. Speaking time may not be granted and/or loaned to another individual for purposes of extending available speaking time, and comments must be kept brief, non-repetitive, and professional in nature.

1. Community Development Block Grant (CDBG) Program funding for Public Service for FY 2023-2024.  
The Commission will hear presentations from the Public Service applicants for 2023-2024 CDBG funding.
2. PUBLIC ART FOR A MEDICAL OFFICE BUILDING AT 1201 WEST WHITTIER BOULEVARD  
That the Community Services Commission approve the design of a bronze sculpture as public art for a medical office building at 1201 West Whittier Boulevard.

**COMMENTS FROM STAFF:**

**COMMENTS FROM COMMISSIONERS:**

**ADJOURNMENT:** Adjourned to Wednesday, \_\_\_\_\_, 2022, at 6:30 p.m. in the City Council Chamber, 100 East La Habra Boulevard.

Except as otherwise provided by law, no action shall be taken on any item not appearing in the foregoing agenda. A copy of the full agenda packet is available for public review at the Office of the City Clerk during regular business hours, and on the City's webpage at <http://www.lahabracalifornia.gov/>.

Materials related to an item on this Agenda submitted to the Commission after distribution of the agenda packet are available for public inspection in the City Clerk's Office at 110 East La Habra Boulevard, La Habra, during normal business hours

In accordance with the Federal Americans with Disabilities Act of 1990, should you require a disability-related modification or accommodation, including auxiliary aids or services to participate in the meeting due to a disability, please contact the Community Services Department at (562) 383-4200.

DECLARATION: This agenda was posted on the bulletin boards outside the south entrance of City Hall and the Council Chamber, where completely accessible to the public, at least 72 hours in advance of the Commission Meeting.

\_\_\_\_\_  
Kimberly Albarian, Secretary



City of  
**LA HABRA**

---

Community Services Commission Report

Item No. 1.

**MEETING DATE:** January 11, 2023

**TO:** COMMUNITY SERVICES COMMISSION

**FROM:** KELLY FUJIO, DIRECTOR OF COMMUNITY SERVICES  
By: Kim Albarian, Community Services Manager

**SUBJECT:** COMMUNITY SERVICES COMMISSION MEETING MINUTES

---

**RECOMMENDATION:**

That the Community Services Commission approve the meeting minutes of December 14, 2022.

---

**Attachments**

CSC Min 20221214

## MINUTES

### COMMUNITY SERVICES COMMISSION OF THE CITY OF LA HABRA

Wednesday, December 14, 2022

**PRELIMINARY:** These Minutes are to be considered for approval on January 11, 2023.

Community Services Chair Kempker called the Regular Meeting of the Community Services Commission at 4:00 p.m. at the Children's Museum at La Habra.

**COMMISSIONERS PRESENT:** Garcia, Kempker, Laveaga, Rojas, Schmidt

**COMMISSIONERS ABSENT:**

**OTHER OFFICIALS PRESENT:** Kelly Fujio, Director of Community Services and Kimberly Albarian, Community Services Manager

**INVOCATION:** Chair Kempker

**PLEDGE OF ALLEGIANCE:** Commissioner Rojas

#### I. PUBLIC COMMENTS:

#### II. CONSIDERATION ITEMS

1. The Community Services Commission participated in the annual Holiday Wishes Program at the Children's Museum at La Habra. Over 300 families participated in this program that provides free admissions to the museum, family activity kit, new toys, food and health & wellness items. Families were referred by the school districts, churches, community members and nonprofit organizations.

#### ADJOURNMENT:

The meeting was adjourned at 4:45 p.m. to Wednesday, January 11, 2022, at 6:30 p.m. in the City Council Chamber, 100 East La Habra Boulevard.

Respectfully submitted,

Kimberly Albarian,  
Recording Secretary

**APPROVAL:** This is to certify that these Minutes were approved by the La Habra City Council on \_\_\_\_\_.

\_\_\_\_\_  
Rhonda J. Barone, CMC  
Assistant City Clerk



City of  
**LA HABRA**

---

Community Services Commission Report

Item No. 1.

**MEETING DATE:** January 11, 2023

**TO:** COMMUNITY SERVICES COMMISSION

**FROM:** KELLY FUJIO, DIRECTOR OF COMMUNITY SERVICES  
By: Susan Louie, Housing Specialist

**SUBJECT:** Community Development Block Grant (CDBG) Program funding for Public Service for FY 2023-2024.

---

**RECOMMENDATION:**

The Commission will hear presentations from the Public Service applicants for 2023-2024 CDBG funding.

---



Item No. 2.

**MEETING DATE:** January 11, 2023

**TO:** COMMUNITY SERVICES COMMISSION

**FROM:** KELLY FUJIO, DIRECTOR OF COMMUNITY SERVICES  
By: Michael O'Toole, Assistant Planner

**SUBJECT:** PUBLIC ART FOR A MEDICAL OFFICE BUILDING AT 1201 WEST WHITTIER BOULEVARD

---

**RECOMMENDATION:**

That the Community Services Commission approve the design of a bronze sculpture as public art for a medical office building at 1201 West Whittier Boulevard.

**DISCUSSION:**

On April 12, 2021, the City's Planning Commission approved plans for the development of a 20,000 square foot, medical office building (Providence office building) at 1201 West Whittier Boulevard, which is currently under construction. As a condition of approval, the applicant/developer is required to design and install artwork in a public space or within the vicinity of the project site subject to the approval of the Community Services Commission, prior to the issuance of a Certificate of Occupancy.

The applicant, Los Altos XXV, LP, is proposing to install a bronze sculpture entitled "Precious Moments" by artist, Max Turner. It is a sculpture of a grandmother and child sitting on a bench (See Attachment 1). The sculpture consists of a multi-color finish brown skin with the clothing a mixture of Verdi green, hunter green, and light and dark brown. The sculpture will be accompanied by an eight-foot high, vintage style street lamp to help illuminate the piece. A plaque describing the art piece will be affixed to the street lamp. According to the applicant, the bronze sculpture represents a moment between grandmother and grandchild and was designed to emphasize how family generations will always be a foundation if the community with acknowledgement of the past, present, and future. The art work will be highly visible to mostly patrons of the La Habra Town Center as it is proposed to be near the main entrance of the medical office building, which faces the parking lot. The overall dimensions of the sculpture are 44 inches wide and 45 inches tall and will be mounted to a concrete pad situated in front of a landscape planter, which give the appearance that the grandmother and child are in a garden setting. Keeping the artwork on-site enables the applicant to further enhance the new medical office building. Additionally, the applicant will be able to provide ongoing maintenance of the artwork as needed at this location; thereby helping ensure the artwork will be enjoyed for many years to come.

**FISCAL IMPACT/SOURCE:**

There will be no impact to the City's General Fund because the proposed bronze sculpture will be provided as public art by the applicant/developer of the newly constructed medical office building at 1201 West Whittier Boulevard. It should be noted that the monetary value of the proposed art piece (including design and installation costs) equates to at least 1% of the building valuation (\$2,200,000.00) or \$22,000.00.

**GENERAL PLAN RELEVANCE/CITY COUNCIL GOALS & OBJECTIVES:**

The proposed project is related to the following General Plan policy:

- LU 11.9 - Retail Streetscapes. Maintain and, where deficient, improve street trees, plantings, furniture (such as benches, trash receptacles, newsracks, and drinking fountains), signage, public art, and other amenities that promote pedestrian activity in retail commercial districts and corridors.
- CI 2.3 - Responsiveness to Context. Require building design that respects to the local context in scale, massing, and materials; is responsive to La Habra's climate; and considers the historic and cultural context of

its neighborhoods.

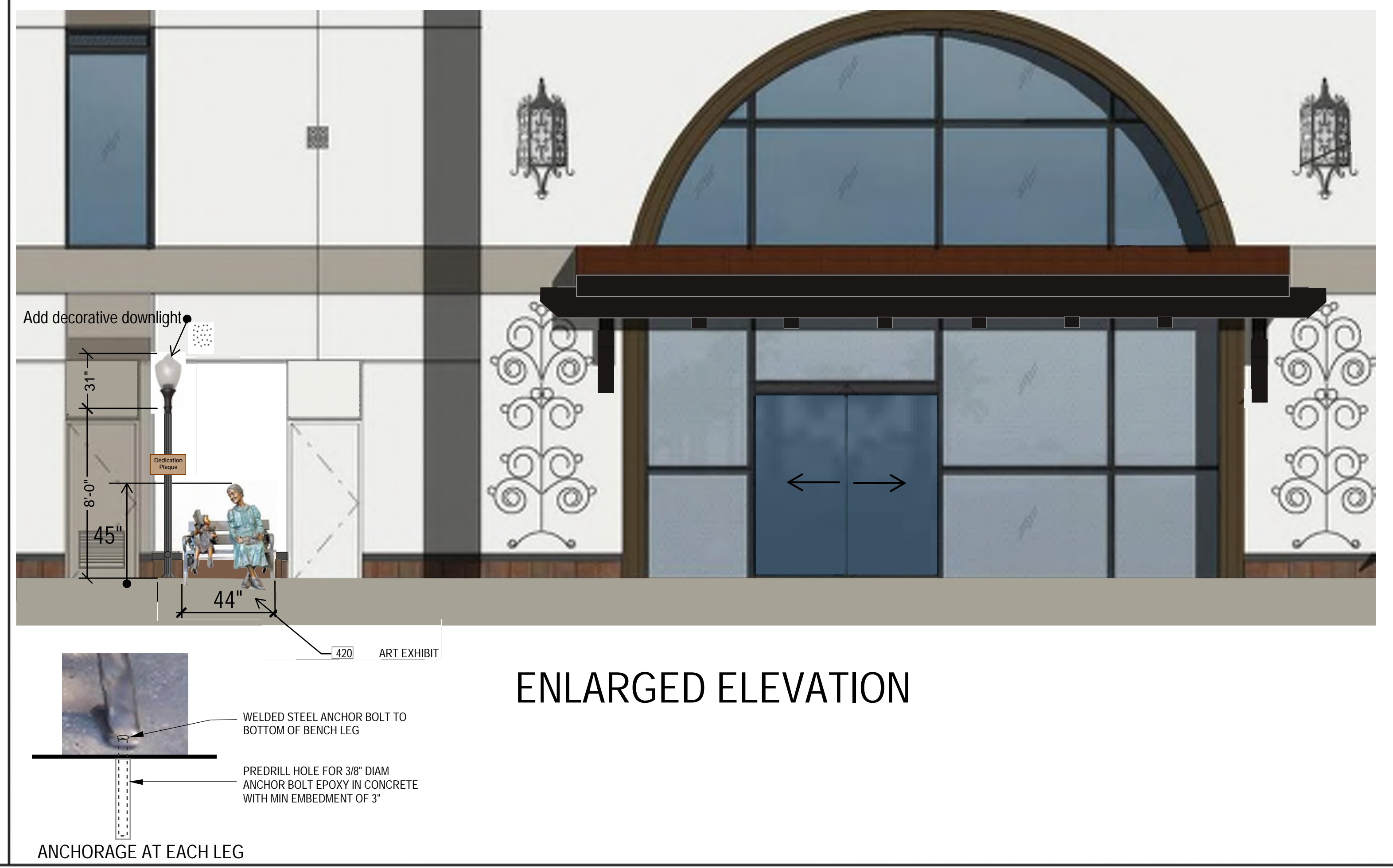
The proposed project is related to the following City Council Goal and Objective:

- Goal 5 - Development Activity and Business Assistance
  - Objective S: Create a Public Art Program requirement/in lieu fee for larger development projects

---

### **Attachments**

1. Plans
2. Sculpture Detail



**INSPIRATION FOR "PRECIOUS MOMENT"**  
by MAX TURNER, ARTIST/ SCULPTOR

Portraying family in a special moment between a Grandmother and child shows the relevance of developing relationships that can bring generations together at any age. Displaying these two people exhibit the importance of heritage in our communities. With this art sculpture, it provides insight into the past, present, and future that family is integral to our community.

**LEGEND**

- GLASS:**
- VISION GLASS
  - SPANDREL GLASS
  - TEMPERED GLASS
- MATERIALS:**
- EXTERIOR SMOOTH PLASTER FINISH WITH INTEGRAL COLOR OVER CMU WALL
  - SALTILLO WALL TILE TO MATCH EXISTING SHOPPING CENTER
- COLORS:**
- PROVIDE 6'-0" WIDE PAINT COLOR MOCK-UP FULL HEIGHT OF BUILDING FOR OWNER/ARCHITECT REVIEW.
- BASE COLOR: SHERWIN WILLIAMS SW7006 EXTRA WHITE
  - SECONDARY COLOR: SHERWIN WILLIAMS SW7036 ACCESSIBLE BEIGE
  - ACCENT COLOR: SHERWIN WILLIAMS SW7038 TONY TAUPE
  - ACCENT COLOR: SHERWIN WILLIAMS SW2735 ROCKWEED

**KEYNOTES:**

- SEE SHEET A0.2 FOR GENERAL NOTES
- 305 SPANISH TILE ROOF SYSTEM W/ FELT UNDERLAYMENT AND HIGH TEMPERATURE WRB.
  - 307 PACKAGE UNIT ON PREFABRICATED CURB. SEE MECHANICAL DRAWINGS.
  - 402 PLASTER CONTROL JOINT.
  - 405 ALUMINUM (ARCADIA CLEAR ANODIZED) STOREFRONT SYSTEM WITH 1" INSULATED GLASS.
  - 409 FINISH GRADE VARIES.
  - 410 LINE OF ROOF BEYOND.
  - 411 EIFS CORNICE AT PARAPET.
  - 412 EIFS CORNICE AT WINDOW HEAD TO MATCH WIDTH OF WINDOW.
  - 413 EXPOSED SPLIT-FACE CMU FINISH.
  - 414 SMOOTH EXTERIOR PLASTER FINISH OVER GYPSUM SHEATHING OVER METAL STUD.
  - 418 TENANT SIGNAGE (UNDER SEPERATE PERMIT).
  - 419 PRE-CAST CORNICE AT STOREFRONT WINDOW SYSTEM.
  - 420 ART EXHIBIT

**WARE, MALCOLM**  
Leading Design for Commercial Real Estate

architecture  
planning  
graphics  
civil engineering

10 Goldman  
Irvine, CA 92618  
Tel: 949.863.1881  
Fax: 949.863.1881

**HERITAGE LA HABRA**  
**CORE & SHELL**  
1201 W. WHITTIER BLVD.  
LA HABRA, CA 90631

**ART SUBMITTAL**

DATE: 08/30/2022  
REMARKS:  
P.A.P.M.: A. ZERTUCHE  
DRAWN BY: D. REYNOLDS  
JOB NO.: IRV19-3021-00

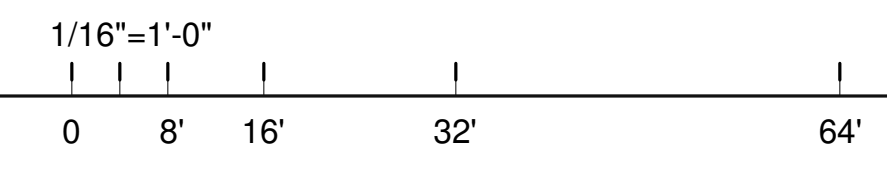
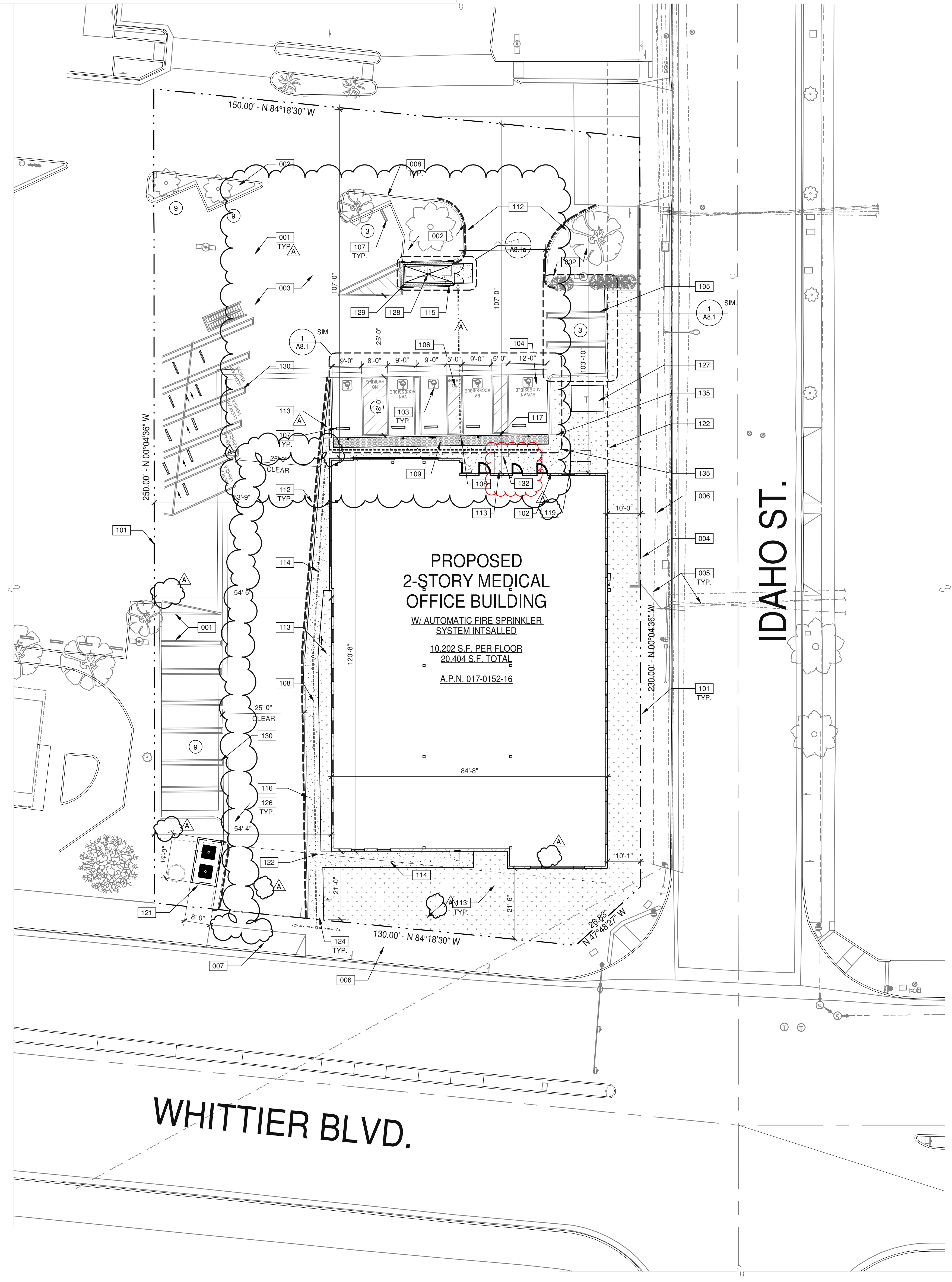
SHEET  
**ART**  
**1.0**

**KEYNOTES:**

- SEE SHEET A0.2 FOR GENERAL NOTES
- 001 EXISTING PARKING STRIPING TO REMAIN.
  - 002 EXISTING LANDSCAPING TO REMAIN.
  - 003 EXISTING ASPHALT PAVING TO REMAIN.
  - 004 EXISTING RETAINING WALL W/ METAL RAILING TO REMAIN.
  - 005 EXISTING OVERHEAD POWER LINES TO REMAIN.
  - 006 EXISTING SIDEWALK AT RIGHT OF WAY.
  - 007 EXISTING DRIVEWAY TO REMAIN.
  - 008 EXISTING CONCRETE CURB TO REMAIN.
  - 101 PROPERTY LINE.
  - 102 ACCESSIBLE ENTRY SIGNAGE.
  - 103 ACCESSIBLE PARKING STALL WITH SIGNAGE.
  - 104 VAN ACCESSIBLE PARKING STALL WITH SIGNAGE.
  - 105 PAINTED PARKING STRIPING PER CITY STANDARDS.
  - 106 PAINTED 4" BLUE STRIPING PER CITY STANDARDS.
  - 107 PRECAST CONCRETE WHEELSTOP.
  - 108 ACCESSIBLE PATH OF TRAVEL. 1:20 MAX. SLOPE, 2% MAX. CROSS SLOPE. SEE CIVIL DRAWINGS.
  - 109 ACCESSIBLE CURB RAMP.
  - 112 FIRELANE CURB, DASHED LINE INDICATES EXTENT OF CONTINUOUS CURB TO BE PAINTED RED.
  - 113 LANDSCAPE AND IRRIGATION AREA. SEE LANDSCAPE DRAWINGS.
  - 114 CONCRETE SIDEWALK. SEE CIVIL DRAWINGS.
  - 115 7'-4"x16'-0" TRASH ENCLOSURE WITH ROOF TO MATCH SHOPPING CENTER PER CITY STANDARDS.
  - 116 CONCRETE CURB. SEE CIVIL DRAWINGS.
  - 117 TRUNCATED WARNING DOMES.
  - 119 BIKE LOCKER (2 BIKES PER FOOTPRINT) ON CONCRETE PAD, AMERICAN BICYCLE SECURITY COMPANY.
  - 121 FILTERRA BY CONTECH FILTRATION SYSTEM. SEE CIVIL PLANS.
  - 122 LINE OF REQUIRED BUILDING SETBACK, VARIES BY SIDE.
  - 124 ACCESSIBLE ACCESS TO RIGHT OF WAY.
  - 126 CARTTRONICS SHOPPING CART THEFT PREVENTION WIRING LOOP (BY OWNER VENDOR).
  - 127 TRANSFORMER WITH CONCRETE PAD. (PROVIDE PROTECTION BOLLARDS PER LOCAL UTILITY OR PUBLIC WORKS STANDARDS).
  - 128 SLOPE TRASH ENCLOSURE SLAB TO DRAIN. SEE PLUMBING DRAWINGS.
  - 129 HOSE BIBB FOR TRASH BIN WASH DOWN. SEE PLUMBING DRAWINGS.
  - 130 EXISTING STRIPING TO BE REPAINTED AFTER REPAIRING.
  - 132 ART SCULPTURE LOCATION.
  - 135 PROPOSED BIKE RACK PER LANDSCAPE PLANS.

**SITE LEGEND**

- ACCESSIBLE PATH OF TRAVEL. 1:20 MAX. SLOPE, 2% MAX. CROSS SLOPE.
- PROPERTY LINE.
- FIRE LANE CURB PAINTED RED WITH "FIRE LANE" PAINTED IN WHITE
- LANDSCAPE AND IRRIGATION AREA.
- FIRE LANE (HATCHED)
- TRANSFORMER WITH CONCRETE PAD. (PROVIDE PROTECTION BOLLARDS PER LOCAL UTILITY OR PUBLIC WORK STANDARDS)
- POLE MOUNTED SITE SIGNAGE
- POLE MOUNTED LIGHT FIXTURE.
- FIRE HYDRANT
- P.I.V. WITH TAMPER
- FIRE DEPARTMENT DDC
- PARKING STALL COUNT TOTAL
- EXISTING LANDSCAPE TO REMAIN
- NEW LANDSCAPE TO REMAIN



**SITE PLAN**  
SCALE: 1/16" = 1'-0"

**WARE MALCOLM**  
Leading Design for Commercial Real Estate

architecture  
planning  
graphics  
civil engineering

10 Goldman  
Irvine, CA 92618  
Tel: 949.261.1000  
Fax: 949.863.1351

**HERITAGE LA HABRA**  
**CORE & SHELL**  
1201 W. WHITTIER BLVD.  
LA HABRA, CALIFORNIA 90631

SITE PLAN		REMARKS
1	50% CD SET	
2	FINAL CD SUBMITTAL	
3	FINAL CD SUBMITTAL	
4	FINAL CD SUBMITTAL	

P.A.P.M.: C. DIONNE  
DRAWN BY: C.S. / C.B.  
JOB NO.: IRV19-3021-00

SHEET  
**A1.1**

# Pedestrian light pole spec

Submitted by California Lighting Sales		<b>Catalog Number:</b> D136 AP24PC-CL (LED) (DIST) (CODE) CLB	<b>Type:</b> <b>EX1</b> CLS16-16076
	<b>Job Name:</b> LA HABRA TOWNE CENTER - RETAIL BUILDING CANOPY FACE LIFT - SITE Architect: Courtney & Le Architects - Monrovia (Monrovia)	<b>Notes:</b>	

## AP24 LED SERIES LUMINAIRE

U41.16

### DESCRIPTION:

Lighting for exterior retail, commercial and hospitality environments. The AP24 Series consists of a decorative acorn combined with one of several styles of cast aluminum fitters.

### LED LUMINAIRE:

Multiple LED systems available with convection cooled driver, options for intensity, distribution and color. They operate with over voltage and short circuit protection and automatic voltage sensing for 120 to 277v input. (See next page for LED availability)

- 50,000+ hours of operational life
- Warm 3000K, neutral 4000K, or cool white 5000K color
- Dimmable (controller by others)
- Suitable for wet locations

ETL listed, suitable for wet locations.

### INSTALLATION:

The luminaire will mount to a 3" OD post or tenon with 5/16" black oxide coated stainless steel set screws to ensure a solid connection. The diffuser will be held to the fitter by (4) 1/4-20" black oxide coated stainless steel captive set screws.

### DIFFUSER CHOICES:

- Clear Textured Polycarbonate (PC-CL)
- White Textured Polycarbonate (PC-WH)
- Clear Textured DR Acrylic (DR-CL)

### FINISH

Premium quality thermoset polyester powdercoat for a durable finish in the following:

- |                             |                            |
|-----------------------------|----------------------------|
| BLK - Satin Black           | GTB - Gloss Textured Black |
| CLB - Classic Bronze        | TBK - Textured Black       |
| GBZ - Gloss Textured Bronze | TGR - Gloss Textured Green |
| GRN - Green                 |                            |



### Ordering information:

Model	Diffuser Material-Color	LED System	Light Distribution	Order Code	Finish	Option
D131/AP24	PC-CL PC-WH DR-CL	AVI VLE	AS SY	3H,4H,5H 3L,4L,5L	BLK CLB GBZ GRN GTB TBK TGR Custom	BB BB-FW CFIN PCL
D133/AP24						
D134/AP24						
D135/AP24						
D136/AP24						
D137/AP24						
D138/AP24						
D139/AP24						
		VERIFY	VERIFY	VERIFY		

See next page for more complete LED ordering options.

800.364.0098 • Fax: 261.997.5441 • www.amerlux.com

Amerlux reserves the right to change details that do not affect overall function and performance.

AP24  
LED



PROJECT:

TYPE:



5 year limited warranty



Part String

Example: D131/AP24/PC-CL/AVI-SY-3H/BLK

amerlux

Products > Exterior > Post Top Luminaires > [AP24 Series](#)

## AP24 Series



AP24-D136

Submitted by California Lighting Sales


**Job Name:**
 LA HABRA TOWNE CENTER - RETAIL BUILDING  
 CANOPY FACE LIFT - SITE  
 Architect: Courtney & Le Architects - Monrovia  
 (Monrovia)
**Catalog Number:**
 D136 AP24PG-CL (LED) (DIST)  
 (CODE) CLB

Notes:


**Type:****EX1**

CLS16-166676

**LED Options** (bold indicates ordering code)

LED System	Light Distribution	Code	CCT	CRI	Light Engine Lumens	Nominal Input Power	
 AVI	SY (Symmetric)	3H	3,000K	80	4,450 lm	60W	
		4H	4,000K	80	5,100 lm		
		5H	5,000K	70	5,870 lm		
	AS (Asymmetric)	3H	3,000K	80	4,410 lm		41W
		4H	4,000K	80	5,050 lm		
		5H	5,000K	70	5,810 lm		
	SY	3L	3,000K	80	2,940 lm	41W	
		4L	4,000K	80	3,450 lm		
		5L	5,000K	70	4,070 lm		
	AS	3L	3,000K	80	2,910 lm		41W
		4L	4,000K	80	3,420 lm		
		5L	5,000K	70	4,030 lm		

Example: D131/AP24/PC-CL/AVI-SY-3H/BLK

LED System	Light Distribution	Order Code	CCT	CRI	Light Engine Lumens	Nominal Input Power	Dimmable
 VLE	SY (Symmetric)	3H	3,000K	80	5,600 lm	80W	0-10V
		4H	4,000K	80	5,700 lm		
		5H	5,000K	70	6,000 lm		
	AS (Asymmetric)	3H	3,000K	80	4,200 lm	60W	
		4H	4,000K	80	4,300 lm		
		5H	5,000K	70	4,500 lm		
	SY	3L	3,000K	80	3,000 lm	40W	
		4L	4,000K	80	3,300 lm		
		5L	5,000K	70	3,600 lm		
	AS	3L	3,000K	80	2,200 lm	30W	
		4L	4,000K	80	2,600 lm		
		5L	5,000K	70	2,800 lm		

Example: D131/AP24/PC-CL/VLE-SY-3H/BLK



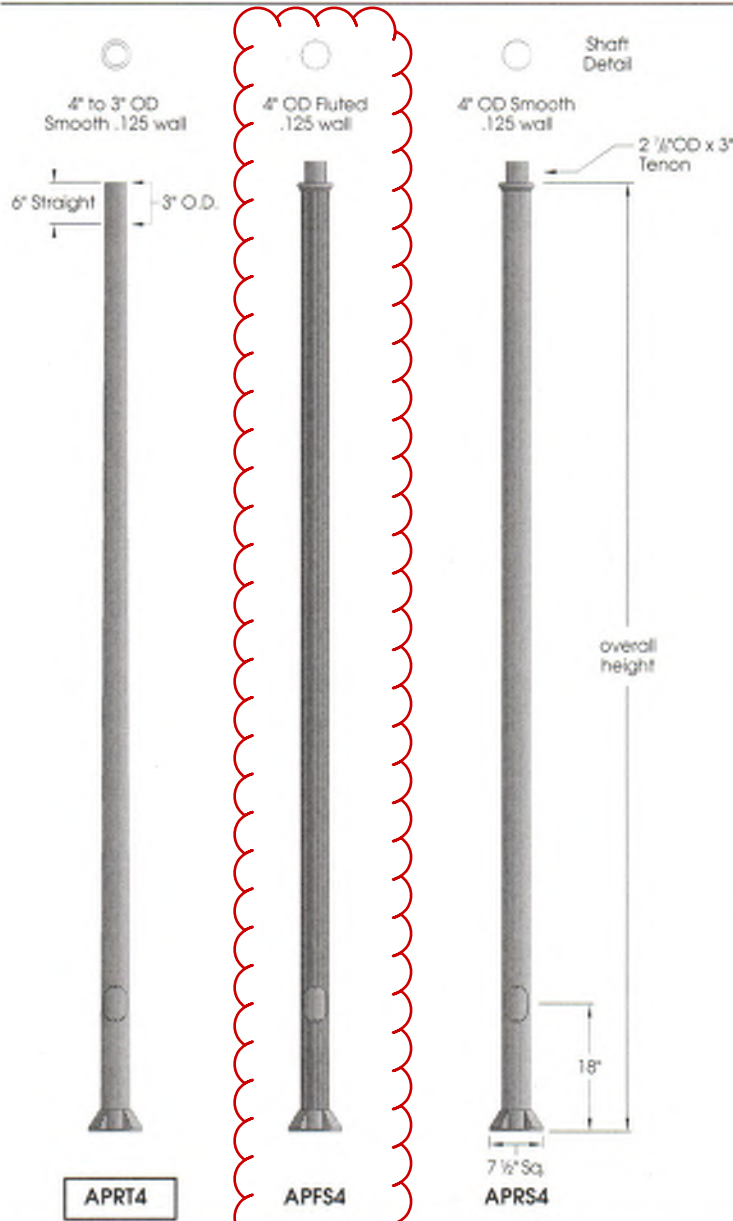
**Job Name:**  
LA HABRA TOWNE CENTER - RETAIL BUILDING  
CANOPY FACE LIFT - SITE  
Architect: Courtney & Le Architects - Monrovia  
(Monrovia)

Notes:

CLS16-166676

# 4" Extruded Series

U.1.11.16



**Features:**

7 1/2" square cast aluminum base flange

Choice of extruded shafts (.125 wall)

- 4" to 3" tapered smooth
- 4" OD fluted (12 flutes)
- 4" OD smooth round

Extruded shaft is circumferentially welded to the base

A 2x4" handhole with curved lap style aluminum door and two stainless steel self-tapping screws is standard. A grounding provision incorporating a tapped 1/8" 20NC hole is provided opposite the handhole.

Ground lug provided inside base

**Materials:**

Base - Cast aluminum (356-T6)  
Shaft - Extruded Aluminum (6063-T6)  
- Tapered Aluminum (6063-T6)  
Anchor Bolts - Hot dipped galvanized steel

**Finish:**

Premium quality thermoset polyester powdercoat for a durable finish.



4-COV

**Part String**

\_\_\_\_\_

Example: APRT4-10/BLK

APRT4	APFS4	APRS4	Overall Height	Finish	Accessories
APRT4-08	APFS4-08	APRS4-08	8'-0"	BLK	4-COV
APRT4-10	APFS4-10	APRS4-10	10'-0"	CLB	BAT8
APRT4-12	APFS4-12	APRS4-12	12'-0"	GBZ	BA24
APRT4-14	APFS4-14	APRS4-14	14'-0"	GRN	FPH-4
APRT4-16	APFS4-16	APRS4-16	16'-0"	GTB	FPH-5
				TBK	GFCI
				TGR	

See next page for more complete accessory options

800.354.0096 • Fax: 281.997.5461 • www.amerluxexterior.com

Amerlux reserves the right to change details that do not affect overall function and performance.





## Job Name:

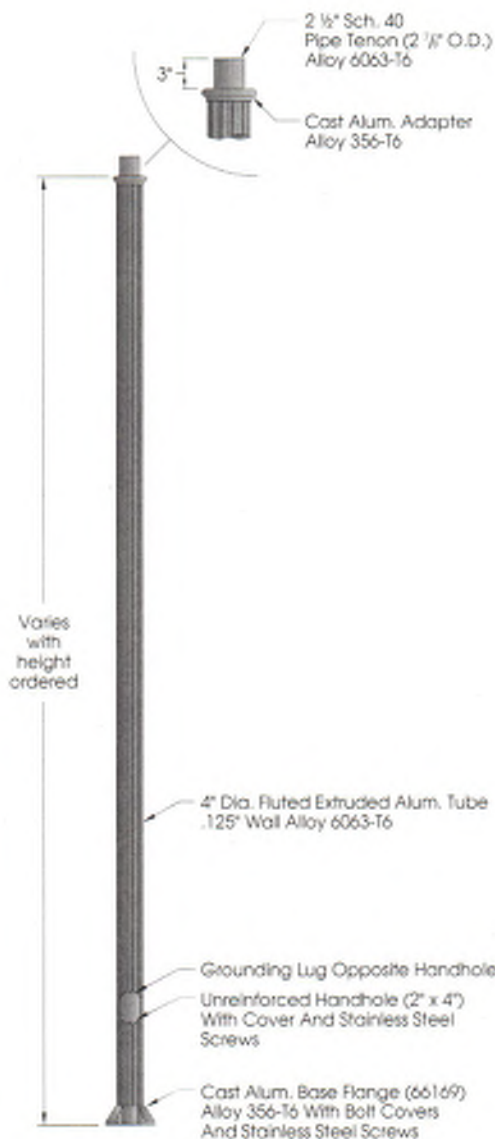
LA HABRA TOWNE CENTER - RETAIL BUILDING  
CANOPY FACE LIFT - SITE  
Architect: Courtney & Le Architects - Monrovia  
(Monrovia)

APRT4-10-CLB / 4-COV-ELB

Notes:

EX1

CLS16-168676



## Finish

The post will be finished with an electrostatically applied thermoset polyester powder coat. Prior to finishing, the parts are thoroughly cleaned. Our powder coat finish is durable, long lasting, attractive and scratch resistant as well as environmentally friendly. We offer 6 stock finishes or hundreds of special order colors including custom matching for existing projects (additional charges apply).

BLK - Satin Black

GTB - Glass Textured Black

CLB - Classic Bronze

TBK - Textured Black

GBT - Glass Textured Bronze

TGR - Glass Textured Green

GRN - Green

## Accessories

See "Accessories" section for more information

## Banner Arms

Single or double sided field rotatable banner arms.

BA18 (18") or BA24 (24") banner arms

FRC4 (4"OD shaft) or FRC5 (5"OD shaft)

Add a (2) for a double arm. Example: 2BA18-FRC4



## FPH-4

Extruded aluminum holder for 1" OD  
flag poles. Available for 4" OD  
non-tapered pole.

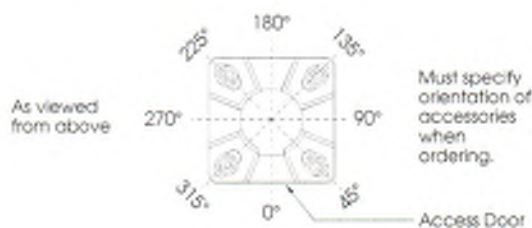
## GFCI

Ground fault circuit protected duplex outlet.  
Available Recess mounted (GFCI-RM) as  
shown or surface mount (GFCI-SM).

## 4-COV

Two piece cover is fabricated from  
stamped and formed aluminum.

## Accessory Orientation Guide



## Anchor Details



(4) 3/8"-10NC Galv. Stl. Anchor Bolts,  
AASHTO M314-90 Grade 55, 10" Of  
Threaded End Galv. Per ASTM A153.  
(4) 3/8"-10NC Galv. Stl. Hex. Nuts  
(4) 3/8" Galv. Stl. Lockwashers  
(4) 3/8" Galv. Stl. Flatwashers

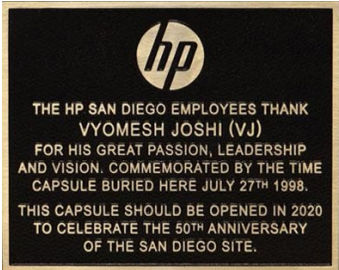
Anchor bolts and templates can be  
requested prior to product shipment.

# Light Pole and Plaque

- Overlay on photo of existing site walkway light pole
- Plaque wording is still being reviewed by the Gonzales Family(ownership)
- Proposed verbiage under consideration:

- a. Health is the greatest of human blessings.  
Hippocrates
- b. Wherever the art of medicine is loved, there is also a love of humanity.  
Hippocrates

Plaque example:  
-size 10"x8"



# Precious Moments Sculpture Detail

File: 1201WestWhittier-LaHabraMOB\_PreciousMomentsSculptureDetail\_resubmittal20221221.pdf



## Precious Moments Bronze Statue

Item #: BMA878  
Size: 45" H. x 44" L. x 28" W.

Quality, attention to detail and experience makes a difference.  
All of our statues are 100% bronze and cast by hand in the Lost Wax process.  
Call us today at (888) 972-7230 for more information about our bronze statues.





