

**we're connected**

LA HABRA AREA CHAMBER OF COMMERCE

# Welcome to the Chamber

**We Build a Strong Local Economy**

**"The Chamber is more than membership, it is an experience.  
Welcome to the Chamber," Mark Sturdevant, President**

## La Habra Chamber Membership What's in it for YOU?



(562) 697-1704

La Habra Area Chamber of Commerce  
[www.lahabrachamber.com](http://www.lahabrachamber.com)

# Chamber Member Level Benefits

See corresponding chart to match your level of benefits

Our **Membership Mission**, with your help, is to learn about your business and tell others about it. Ultimately, membership is about **increasing your sales**. Your success will help us with our overall mission: **Build a Strong Local Economy**. Our community mission supports our local High School scholarships programs.

## Effective Networking

Chamber networking events bring together not only people who may just be starting *their* business and *their* networking journey, but also people who are very experienced and very wise in knowing how to build beneficial networking relationships. And even better, you'll often find that these people are willing to share their knowledge and act as a mentor for new members for networking *and* business.



ConnectUp at Northgate Market is our signature networking opportunity that meets every week, except for holidays. 40-60 people come together for free coffee and treats. There are new people every week.

This is a relaxed event where you will be immediately welcomed. The goal is to get to know each other and share information about each business. We discourage hard sell techniques. Northgate Market is located at 1305 West Whittier Blvd., La Habra.

## Chamber Name Tag

What's in a name? Just about everything! We provide you with your own personalized name tag that identifies you as a La Habra Chamber member, your business and a reflection of your level of membership.

## Basic Member Web Page

Your membership starts here with a member information page that includes basic details about your business and a link to your own website if you have one. This enables search engines to find your business information from a trusted source, the Chamber of Commerce. You are able to update your information.



## Chamber on the Move

The first Thursday of the Month, Chamber Members get together to discuss the needs of business, expand on their business services and to hear from outside presenters. Chamber on the Move meets on the first Thursday of the month, 8:00-9:00am., most often at Black Bear Diner, 1000 South Beach Blvd., La Habra, CA.

## Membership Plaque

Customers like to see a business that participates in the local community and professional affiliations. The Chamber is seen as a trusted organization that cares about its community and membership in the Chamber gives that added level of confidence in their choice to do business with you.

# Chamber Member Level Benefits

See corresponding chart to match your level of benefits

## Advocacy and Access to Government

The La Habra Chamber has a strong working relationship with all levels of Government from Municipal to the Federal Government. Ultimately, getting things done makes the difference and we can usually connect you with the right decision-maker.

## Enhanced Web Page

The enhanced web page gives you links to social media, expanded keywords to be found much easier: Photo galleries, expanded descriptions, multiple contacts, job posting, press releases and more. The more information search engines detect on your page the higher ranked and relevant your page becomes.

## Showcase Mixers - Grand Openings / Ribbon Cutting

You can get your business noticed with these small receptions. We will help you invite members and the public. This is one of the best ways people can learn about your business and become an advocate for you.



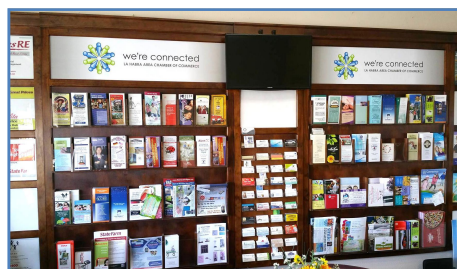
## Chamber Business Alliance

The Chamber Business Alliance (CBA) is a group of 7 Chambers that have agreed to welcome members from other CBA Chambers to attend selected events displaying the CBA welcome logo. We believe all will benefit by cooperating with one another and welcoming business-minded people. It's good for business! Currently we have Brea, Yorba Linda, Placentia, La Mirada, La Habra, Whittier and Artesia Chambers participating with a 1,800 combined membership.

## Enhanced Membership Plaque

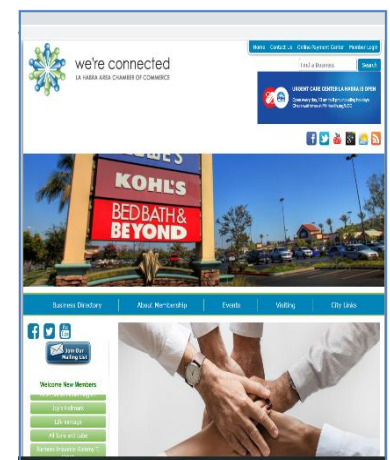
Your membership plaque is unique to your business and can be proudly displayed for years to come as a member of the La Habra Chamber of Commerce. This will leave an even greater impression on your customers about the level of commitment to the community.

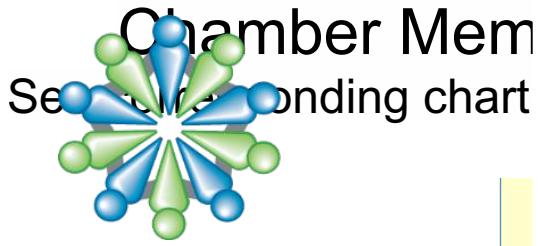
**Logo on Website and Visitors Center** Your logo can be displayed on the Chamber website that has a clickable link to your page. This is where everyone will see your brand the most.



## Event Stand Banner

Platinum Circle - A prominently displayed banner will be at Chamber events including our State of the Nation, Annual Awards and Installation banquet, weekly ConnectUp at Northgate Market and on display at the Chamber office.





# La Habra Chamber of Commerce

## Membership Benefits

## Top Level Benefits match your level of benefits

	Membership Levels							
	Residential Member (\$1)	Volunteer Organization (\$171)	Small Biz start-up / Home Based (\$286)	Charitable Organizations NGO (\$264)	Basic Business Member (\$396/38) *	Executive Member (\$539/50) *	Business Gold (\$820)	Platinum Circle (\$1,815)
Networking	●	●	●	●	●	●	●	●
Basic-Member Web Page		●	●	●	●	●	●	●
Chamber Name Tag \$15ea			●	●	●	●	●	●
Chamber on the Move			●	●	●	●	●	●
Chamber Business Alliance			●	●	●	●	●	●
Membership Plaque				●	●	See Enhanced Plaque		
Showcase Mixers					●	●	●	●
Social Media Acknowledgement			●	●	●	●	●	●
Enhanced Member Web Page						●	●	●
EP - Enhanced Member Plaque						●	●	●
Lunch Mob	●	●	●	●	●	●	●	●
Logo on Chamber website							**	●
Top Level Entry Sign							**	●

\* Monthly payment options

\*\* Name listed on Chamber Website and Banner

Small Biz start-ups are intended for sole proprietors that are just starting out in business. These rates are good for one year.

Revised 10-22-2024