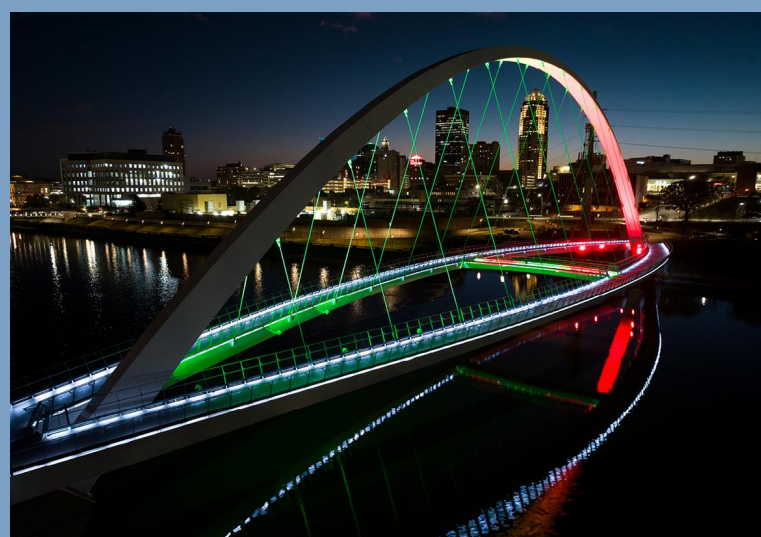


Sports Illustrated Stadium, Harrison, New Jersey, USA



UBS Arena, Elmont, New York, USA



Iowa Women of Achievement Bridge, Des Moines, Iowa, USA



Tottenham Hotspur FC Training Ground, Tottenham, London, UK

Portola Park

La Habra, CA



Sales Representative: M.Marchetti · Designed By: E.Fox · Design No.: 200920C · October 08, 2025

LIGHTING SYSTEM

Structure/Fixture Summary							
Structure ID	Structure Height	Fixt. Attachment Ht.	Fixture Qty	Fixture Type	Design Load	Circuit	
A1-A2	60'	60'	3	TLC-LED-900	2.64 kW	A	
		16'	1	TLC-BT-575	0.57 kW	A	
A3	60'	60'	1	TLC-LED-1200	1.16 kW	B	
		60'	3	TLC-LED-900	2.64 kW	B	
		16'	1	TLC-BT-575	0.57 kW	B	
B1	70'	70'	1	TLC-LED-1200	1.16 kW	B	
		70'	1	TLC-LED-550	0.53 kW	A	
		70'	1	TLC-LED-900	0.88 kW	A	
		70'	2	TLC-LED-1200	2.33 kW	A	
		70'	3	TLC-LED-900	2.64 kW	B	
		16'	1	TLC-BT-575	0.57 kW	A	
		16'	1	TLC-BT-575	0.57 kW	B	
		70'	2	TLC-LED-1200	2.33 kW	A	
B2	70'	70'	2	TLC-LED-900	1.76 kW	A	
		16'	1	TLC-BT-575	0.57 kW	A	
		16'	1	TLC-BT-575	0.57 kW	A	
P1	50'	50'	3	TLC-LED-550	1.58 kW	C	
			31		25.75 kW		

Add Alt 1

*Fixtures in this design have dimmed output values to meet design specific needs.

Circuit Summary			
Circuit	Description	Design Load	Fixture Qty
A	Baseball	15.41 kW	18
B	Little League	8.76 kW	10
C	Area Lighting	1.58 kW	3

Fixture Type Summary								
Type	Circuit	Source	Avg. Wattage	Avg. Lumens	L90	L80	L70	Quantity
TLC-BT-575	A	LED 5700K - 75 CRI	575W	52,651	>120,000	>120,000	>120,000	4
TLC-BT-575	B	LED 5700K - 75 CRI	575W	52,651	>120,000	>120,000	>120,000	2
TLC-LED-1200	B	LED 5700K - 75 CRI	1165W	147,246	>120,000	>120,000	>120,000	2
TLC-LED-1200	A	LED 5700K - 80 CRI	1165W	135,815	>120,000	>120,000	>120,000	4
TLC-LED-550	A	LED 5700K - 75 CRI	527W	66,827	>120,000	>120,000	>120,000	1
TLC-LED-550	C	LED 5700K - 75 CRI	527W	66,679	>120,000	>120,000	>120,000	3
TLC-LED-900	A	LED 5700K - 75 CRI	880W	99,640	>120,000	>120,000	>120,000	8
TLC-LED-900	B	LED 5700K - 75 CRI	880W	97,357	>120,000	>120,000	>120,000	6
TLC-LED-900	A	LED 5700K - 80 CRI	880W	96,166	>120,000	>120,000	>120,000	1

Single Fixture Amperage Draw Chart									
Driver Specifications (.90 min power factor)	Line Amperage Per Fixture (max draw)								
	Single Phase Voltage		208 (60)	220 (60)	240 (60)	277 (60)	347 (60)	380 (60)	480 (60)
TLC-LED-1200			6.9	6.5	6.0	5.2	4.2	3.8	3.0
TLC-LED-900			5.2	4.9	4.5	3.9	3.1	2.9	2.3
TLC-BT-575			3.3	3.2	2.9	2.5	2.0	1.8	1.5
TLC-LED-550			3.2	3.0	2.8	2.4	1.9	1.8	1.4

*Amp draw based on 100% fixture output, consult design specific datasheet for adjusted amperage draw chart

Light Level Summary

Calculation Grid Summary								
Grid Name	Calculation Metric	Illumination Ave					Circuits	Fixture Qty
		Ave	Min	Max	Max/Min	Ave/Min		
Area Lighting Grid	Horizontal	13.78	7	20	2.97	2.02	C	3
Baseball (Infield)	Horizontal Illuminance	50.35	38	65	1.72	1.32	A	18
Baseball (Outfield)	Horizontal Illuminance	30.12	18	42	2.31	1.65	A	18
Little League (Infield)	Horizontal Illuminance	38.36	24	57	2.41	1.62	B	10
Little League (Outfield)	Horizontal Illuminance	19.48	10	29	2.95	1.97	B	10
Spill @ 3ft	Horizontal Illuminance	0.2660	0.00	3.83	-	-	A,B,C	31
Spill @ 5ft	Max Candela Metric	2991.2258	0.00	36853.51	-	-	A,B,C	31
Spill @ 5ft	Max Vertical Illuminance Metric	0.3351	0.00	5.00	-	-	A,B,C	31

Guaranteed Performance: The ILLUMINATION described above is guaranteed per your Musco Warranty document.

Field Measurements: Individual field measurements may vary from computer-calculated predictions.

Electrical System Requirements: Refer to Amperage Draw Chart and/or the "Musco Control System Summary" for electrical sizing.

Installation Requirements: Results assume ± 3% nominal voltage at line side of the driver and structures located within 3 feet (1m) of design locations.

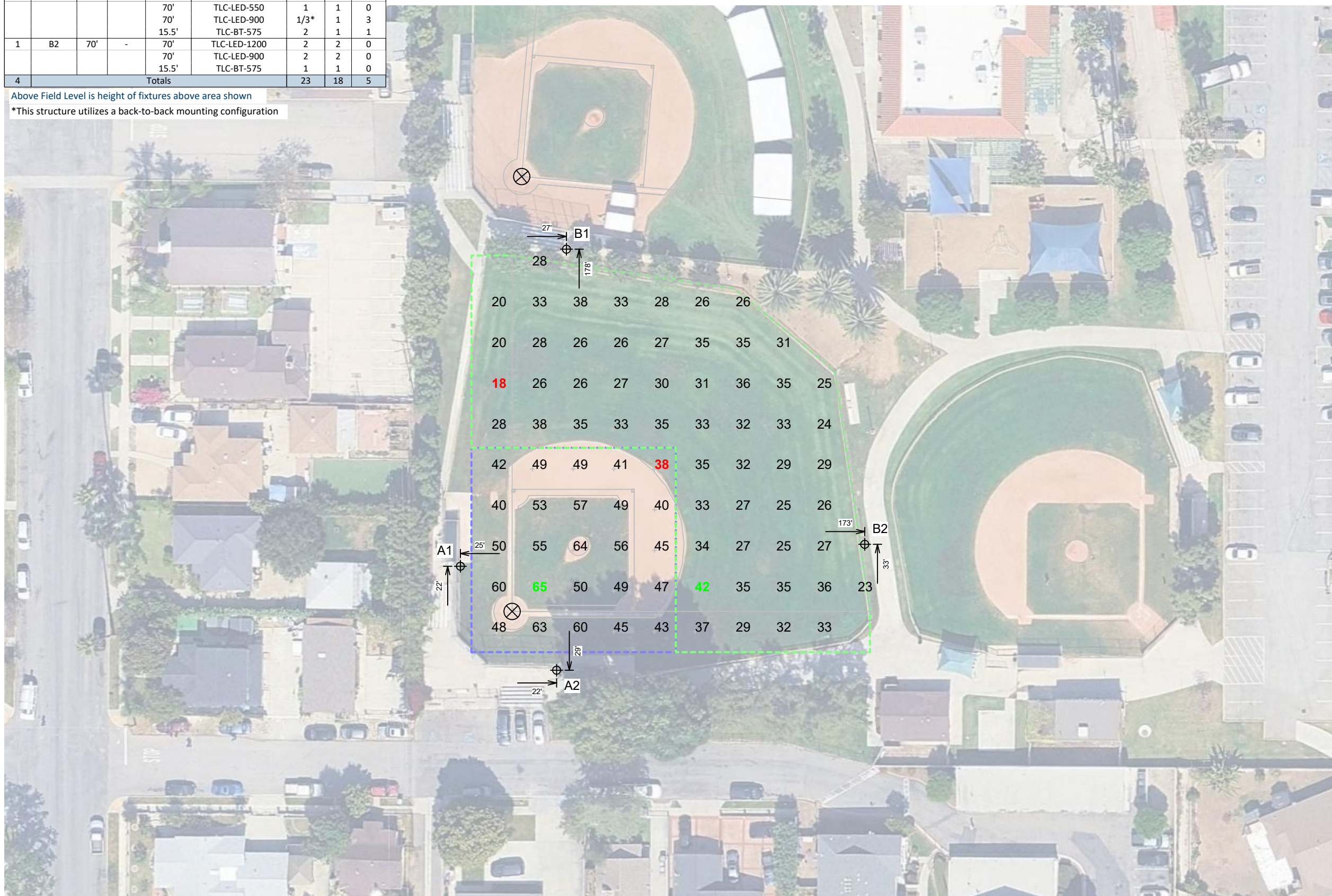


Equipment List For Areas Shown

Structure				Fixtures				
QTY	STRUCTURE ID	SIZE	GRADE ELEVATION	ABOVE FIELD LEVEL	FIXTURE TYPE	QTY/POLE	THIS GRID	OTHER GRIDS
2	A1-A2	60'	-	60'	TLC-LED-900	3	3	0
				15.5'	TLC-BT-575	1	1	0
1	B1	70'	-	70'	TLC-LED-1200	2/1*	2	1
				70'	TLC-LED-550	1	1	0
				70'	TLC-LED-900	1/3*	1	3
				15.5'	TLC-BT-575	2	1	1
				70'	TLC-LED-1200	2	2	0
1	B2	70'	-	70'	TLC-LED-900	2	2	0
				70'	TLC-LED-1200	2	2	0
				15.5'	TLC-BT-575	1	1	0
4	Totals					23	18	5

Above Field Level is height of fixtures above area shown
 *This structure utilizes a back-to-back mounting configuration

BASE BID



Portola Park

La Habra, CA

Grid Summary	
Name:	Baseball
Size:	Irregular 175'/193'/176'
Spacing:	20.0' x 20.0'
Height:	3.0' above grade

	MAINTAINED HORIZONTAL FOOTCANDLES	
	Infield	Outfield
Guaranteed Average:	50	30
Scan Average:	50.35	30.12
Maximum:	65	42
Minimum:	38	18
Avg/Min:	1.32	1.65
Guaranteed Max/Min:	2	2.5
Max/Min:	1.72	2.31
UG (adjacent pts):	1.33	1.61
CU:	0.68	
No. of Points:	25	55
FIXTURE INFORMATION		
Applied Circuits:	A	
No. of Fixtures:	18	
Total Load:	15.41 kW	

Guaranteed Performance: The ILLUMINATION described above is guaranteed per your Musco Warranty document.

Field Measurements: Individual field measurements may vary from computer-calculated predictions.

Electrical System Requirements: Refer to Amperage Draw Chart and/or the "Musco Control System Summary" for electrical sizing.

Installation Requirements: Results assume ± 3% nominal voltage at line side of the driver and structures located within 3 feet (1m) of design locations.

Pole location(s) ⊕ dimensions are relative to 0,0 reference point(s) ⊗

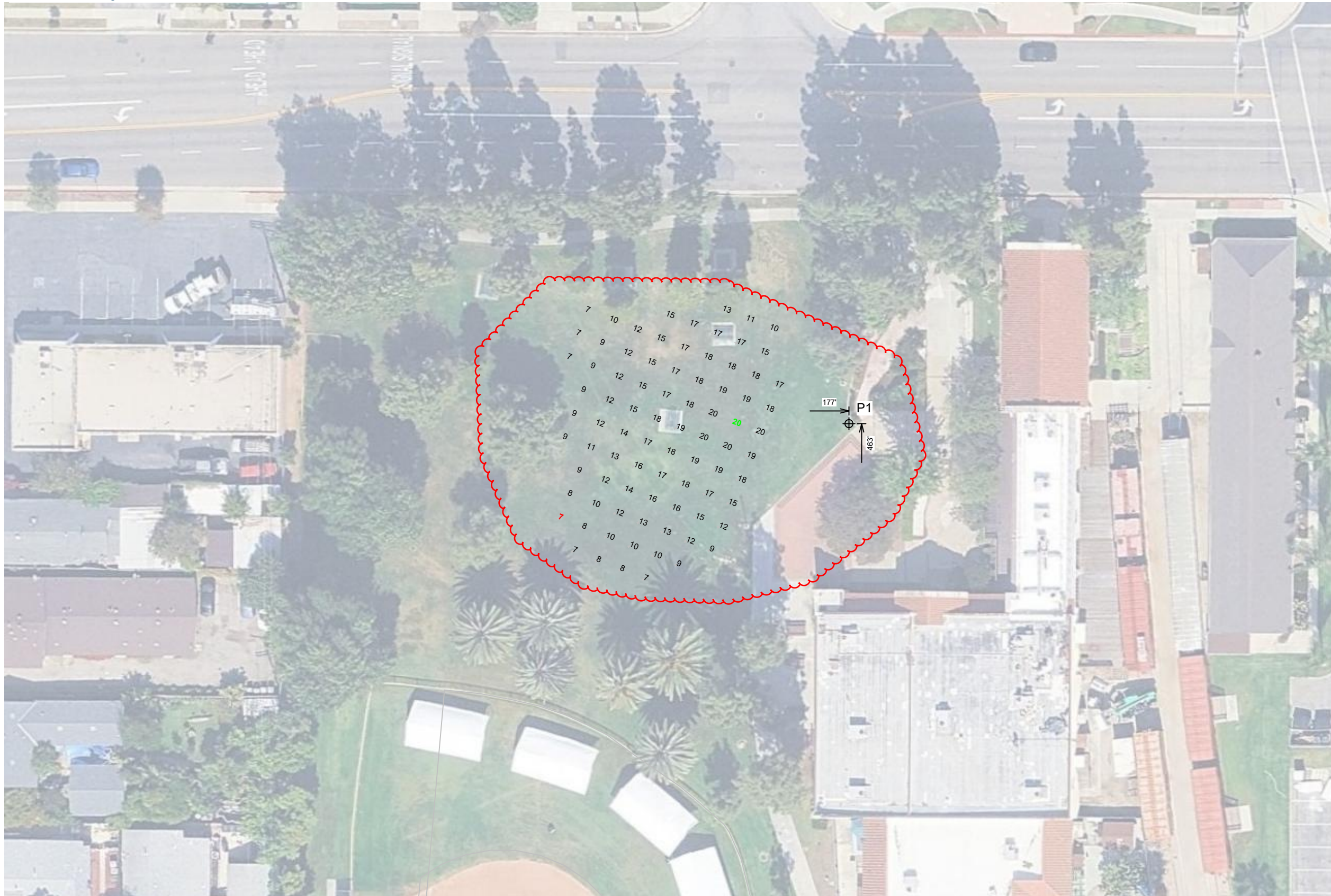


Equipment List For Areas Shown

Structure				Fixtures				
QTY	STRUCTURE ID	SIZE	GRADE ELEVATION	ABOVE FIELD LEVEL	FIXTURE TYPE	QTY/POLE	THIS GRID	OTHER GRIDS
1	P1	50'	-	50'	TLC-LED-550	3	3	0
1	Totals					3	3	0

Above Field Level is height of fixtures above area shown

Add Alt 1



Portola Park

La Habra, CA

Grid Summary	
Name:	Area Lighting Grid
Size:	Irregular 175'/193'/176'
Spacing:	10.0' x 10.0'
Height:	3.0' above grade

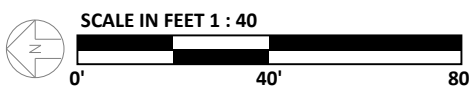
Illumination Summary	
	MAINTAINED HORIZONTAL FOOTCANDLES
Scan Average:	13.78
Maximum:	20
Minimum:	7
Avg/Min:	2.02
Max/Min:	2.97
UG (adjacent pts):	1.59
CU:	0.57
No. of Points:	83
FIXTURE INFORMATION	
Applied Circuits:	C
No. of Fixtures:	3
Total Load:	1.58 kW

Guaranteed Performance: The ILLUMINATION described above is guaranteed per your Musco Warranty document.

Field Measurements: Individual field measurements may vary from computer-calculated predictions.

Electrical System Requirements: Refer to Amperage Draw Chart and/or the "Musco Control System Summary" for electrical sizing.

Installation Requirements: Results assume ± 3% nominal voltage at line side of the driver and structures located within 3 feet (1m) of design locations.



ENGINEERED DESIGN By: E.Fox • File #200920C • 08-Oct-25

Pole location(s) ⊕ dimensions are relative to 0,0 reference point(s) ⊗



Not to be reproduced in whole or part without the written consent of Musco Sports Lighting, LLC. ©1981, 2025 Musco Sports Lighting, LLC.

ILLUMINATION SUMMARY

Equipment List For Areas Shown

Structure				Fixtures				
QTY	STRUCTURE ID	SIZE	GRADE ELEVATION	ABOVE FIELD LEVEL	FIXTURE TYPE	QTY/POLE	THIS GRID	OTHER GRIDS
1	A3	60'	-	60'	TLC-LED-1200	1	1	0
				60'	TLC-LED-900	3	3	0
				15.5'	TLC-BT-575	1	1	0
1	B1	70'	-	70'	TLC-LED-1200	2/1*	1	2
				70'	TLC-LED-550	1	0	1
				70'	TLC-LED-900	1/3*	3	1
				15.5'	TLC-BT-575	2	1	1
2	Totals					15	10	5

BASE BID

Above Field Level is height of fixtures above area shown
 *This structure utilizes a back-to-back mounting configuration



Portola Park

La Habra, CA

Grid Summary	
Name:	Little League
Size:	Irregular 145'/151'/140'
Spacing:	20.0' x 20.0'
Height:	3.0' above grade

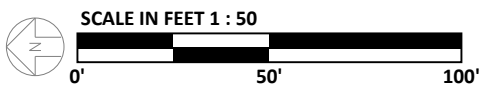
	MAINTAINED HORIZONTAL FOOTCANDLES	
	Infield	Outfield
Guaranteed Average:	50	30
Scan Average:	38.36	19.48
Maximum:	57	29
Minimum:	24	10
Avg/Min:	1.62	1.97
Guaranteed Max/Min:	2	2.5
Max/Min:	2.41	2.95
UG (adjacent pts):	1.35	1.65
CU:	0.64	
No. of Points:	25	31
FIXTURE INFORMATION		
Applied Circuits:	B	
No. of Fixtures:	10	
Total Load:	8.76 kW	

Guaranteed Performance: The ILLUMINATION described above is guaranteed per your Musco Warranty document.

Field Measurements: Individual field measurements may vary from computer-calculated predictions.

Electrical System Requirements: Refer to Amperage Draw Chart and/or the "Musco Control System Summary" for electrical sizing.

Installation Requirements: Results assume ± 3% nominal voltage at line side of the driver and structures located within 3 feet (1m) of design locations.



Pole location(s) ⊕ dimensions are relative to 0,0 reference point(s) ⊗



Equipment List For Areas Shown								
Structure				Fixtures				
QTY	STRUCTURE ID	SIZE	GRADE ELEVATION	ABOVE FIELD LEVEL	FIXTURE TYPE	QTY/POLE	THIS GRID	OTHER GRIDS
2	A1-A2	60'	-	60'	TLC-LED-900	3	3	0
				15.5'	TLC-BT-575	1	1	0
1	A3	60'	-	60'	TLC-LED-1200	1	1	0
				60'	TLC-LED-900	3	3	0
				15.5'	TLC-BT-575	1	1	0
1	B1	70'	-	70'	TLC-LED-1200	2/1*	3	0
				70'	TLC-LED-550	1	1	0
				70'	TLC-LED-900	1/3*	4	0
				15.5'	TLC-BT-575	2	2	0
1	B2	70'	-	70'	TLC-LED-1200	2	2	0
				70'	TLC-LED-900	2	2	0
				15.5'	TLC-BT-575	1	1	0
1	P1	50'	-	50'	TLC-LED-550	3	3	0
6	Totals					31	31	0

Above Field Level is height of fixtures above area shown
 *This structure utilizes a back-to-back mounting configuration



Portola Park

La Habra, CA

Grid Summary	
Name:	Spill @ 3ft
Spacing:	30.0'
Height:	3.0' above grade

Illumination Summary	
INITIAL HORIZONTAL FOOTCANDLES	
Scan Average:	0.2660
Maximum:	3.83
Minimum:	0.00
CU:	0.01
No. of Points:	98
FIXTURE INFORMATION	
Applied Circuits:	A,B,C
No. of Fixtures:	31
Total Load:	25.75 kW

Guaranteed Performance: The ILLUMINATION described above is guaranteed per your Musco Warranty document.

Field Measurements: Individual field measurements may vary from computer-calculated predictions.

Electrical System Requirements: Refer to Amperage Draw Chart and/or the "Musco Control System Summary" for electrical sizing.

Installation Requirements: Results assume ± 3% nominal voltage at line side of the driver and structures located within 3 feet (1m) of design locations.

SCALE IN FEET 1 : 120

ENGINEERED DESIGN By: E.Fox • File #200920C • 08-Oct-25

Pole location(s) ⊕ dimensions are relative to 0,0 reference point(s) ⊗



Not to be reproduced in whole or part without the written consent of Musco Sports Lighting, LLC. ©1981, 2025 Musco Sports Lighting, LLC.

Equipment List For Areas Shown								
Structure				Fixtures				
QTY	STRUCTURE ID	SIZE	GRADE ELEVATION	ABOVE FIELD LEVEL	FIXTURE TYPE	QTY/POLE	THIS GRID	OTHER GRIDS
2	A1-A2	60'	-	60'	TLC-LED-900	3	3	0
				15.5'	TLC-BT-575	1	1	0
1	A3	60'	-	60'	TLC-LED-1200	1	1	0
				60'	TLC-LED-900	3	3	0
				15.5'	TLC-BT-575	1	1	0
1	B1	70'	-	70'	TLC-LED-1200	2/1*	3	0
				70'	TLC-LED-550	1	1	0
				70'	TLC-LED-900	1/3*	4	0
				15.5'	TLC-BT-575	2	2	0
1	B2	70'	-	70'	TLC-LED-1200	2	2	0
				70'	TLC-LED-900	2	2	0
				15.5'	TLC-BT-575	1	1	0
1	P1	50'	-	50'	TLC-LED-550	3	3	0
6	Totals					31	31	0

Above Field Level is height of fixtures above area shown
 *This structure utilizes a back-to-back mounting configuration



Portola Park

La Habra, CA

Grid Summary	
Name:	Spill @ 5ft
Spacing:	30.0'
Height:	5.0' above grade

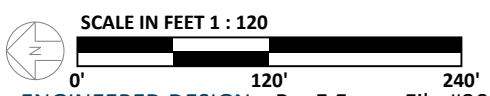
Illumination Summary	
INITIAL MAX VERTICAL FOOTCANDLES	
Scan Average:	0.3351
Maximum:	5.00
Minimum:	0.00
CU:	0.01
No. of Points:	98
FIXTURE INFORMATION	
Applied Circuits:	A,B,C
No. of Fixtures:	31
Total Load:	25.75 kW

Guaranteed Performance: The ILLUMINATION described above is guaranteed per your Musco Warranty document.

Field Measurements: Individual field measurements may vary from computer-calculated predictions.

Electrical System Requirements: Refer to Amperage Draw Chart and/or the "Musco Control System Summary" for electrical sizing.

Installation Requirements: Results assume ± 3% nominal voltage at line side of the driver and structures located within 3 feet (1m) of design locations.



ENGINEERED DESIGN By: E.Fox • File #200920C • 08-Oct-25

Pole location(s) ⊕ dimensions are relative to 0,0 reference point(s) ⊗



Not to be reproduced in whole or part without the written consent of Musco Sports Lighting, LLC. ©1981, 2025 Musco Sports Lighting, LLC.

ILLUMINATION SUMMARY

Portola Park

La Habra, CA

Equipment Layout

INCLUDES:
 - Baseball
 - Little League

Electrical System Requirements: Refer to Amperage Draw Chart and/or the "Musco Control System Summary" for electrical sizing.

Installation Requirements: Results assume ± 3% nominal voltage at line side of the driver and structures located within 3 feet (1m) of design locations.

Equipment List For Areas Shown

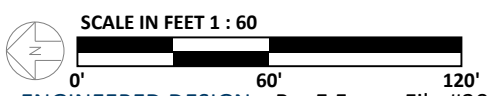
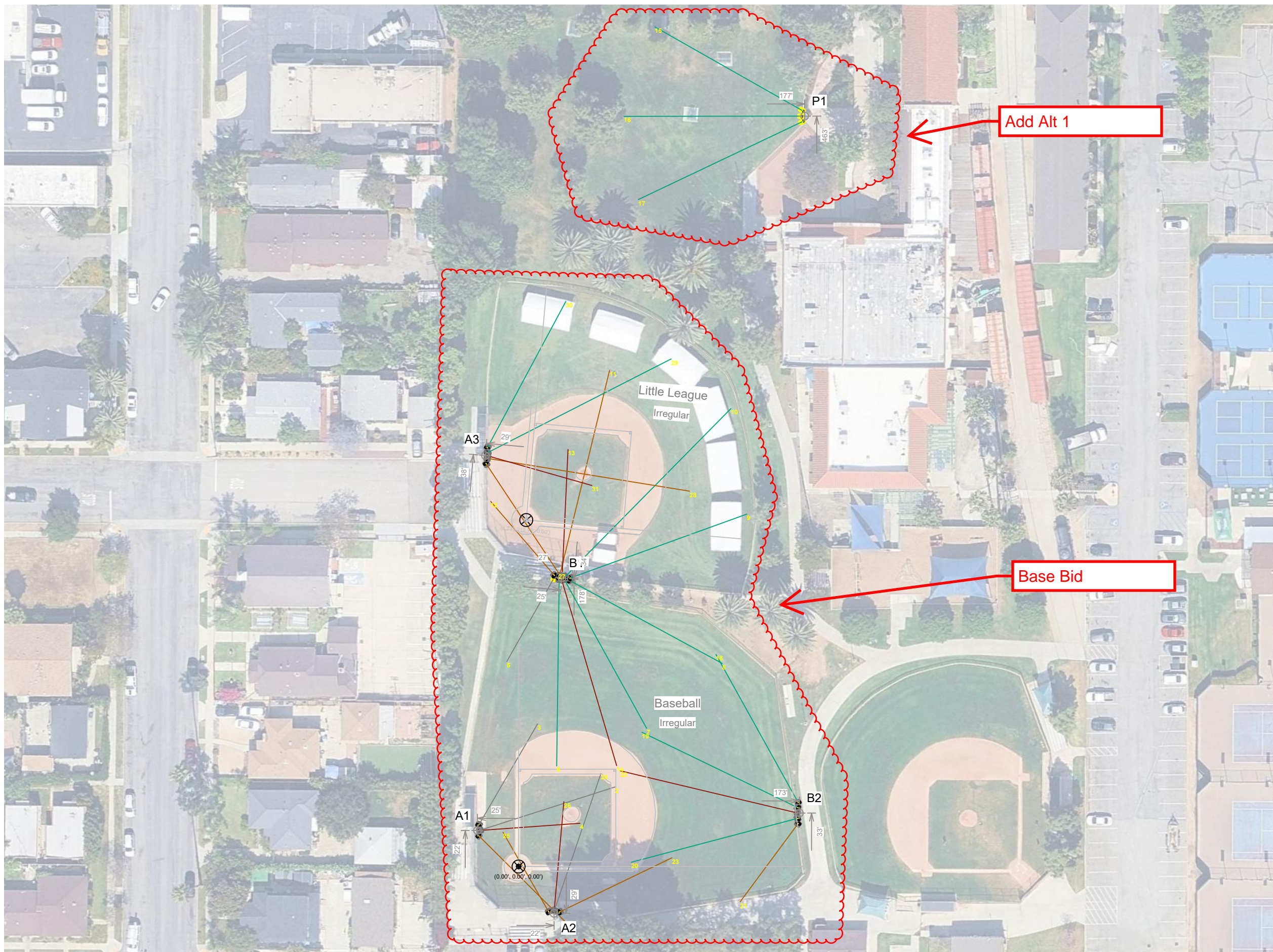
QTY	Structure			Fixtures		
	STRUCTURE ID	SIZE	GLOBAL ELEVATION	ABOVE GLOBAL LEVEL	FIXTURE TYPE	QTY/POLE
2	A1-A2	60'	-	60'	TLC-LED-900	3
				15.5'	TLC-BT-575	1
1	A3	60'	-	60'	TLC-LED-1200	1
				60'	TLC-LED-900	3
1	B1	70'	-	15.5'	TLC-BT-575	1
				70'	TLC-LED-1200	2/1*
1	B2	70'	-	70'	TLC-LED-550	1
				15.5'	TLC-LED-900	1/3*
1	P1	50'	-	70'	TLC-BT-575	2
				70'	TLC-LED-1200	2
1	P1	50'	-	70'	TLC-LED-900	2
				15.5'	TLC-BT-575	1
6	Totals					31

*This structure utilizes a back-to-back mounting configuration
 Above Global Level is height of fixtures above design (0,0,0)

Single Fixture Amperage Draw Chart

Driver Specifications (.90 min power factor)	Line Amperage Per Fixture (max draw)						
	208 (60)	220 (60)	240 (60)	277 (60)	347 (60)	380 (60)	480 (60)
Single Phase Voltage	6.9	6.5	6.0	5.2	4.2	3.8	3.0
TLC-LED-1200	5.2	4.9	4.5	3.9	3.1	2.9	2.3
TLC-LED-900	3.3	3.2	2.9	2.5	2.0	1.8	1.5
TLC-LED-550	3.2	3.0	2.8	2.4	1.9	1.8	1.4

*Amp draw based on 100% fixture output, consult design specific datasheet for adjusted amperage draw chart



ENGINEERED DESIGN By: E.Fox • File #200920C • 08-Oct-25

Pole location(s) ⊕ dimensions are relative to 0,0 reference point(s) ⊗



Not to be reproduced in whole or part without the written consent of Musco Sports Lighting, LLC. ©1981, 2025 Musco Sports Lighting, LLC.

EQUIPMENT LAYOUT