

Signage Guidelines for 303 Harbor Square

These guidelines are established to create a lively atmosphere, promote tenant identity, and ensure compliance with City of La Habra regulations. All signage must be reviewed and approved by the Landlord and City prior to installation.

1. General Signage Requirements

- Purpose and Review**
- Signs must integrate with architectural storefront elements to form an attractive composition.
 - Illumination is optional but encouraged for visibility and design enhancement, subject to minimizing light pollution and meeting City brightness standards.
- Approval Process**
- Landlord Approval: Submit initial designs, including materials, dimensions, and lighting details.
 - City Approval: Submit approved designs to the City of La Habra Planning Department for review and permitting.

2. Primary Sign Specifications

- Placement**
- Location: One primary sign mounted at the fascia overhang nearest to the shop entrance.
 - Additional Entrances: A secondary primary sign is allowed if it matches the original in size, design, and content.
- Size**
- Maximum size of 18 square feet (8' x 2.25') per 1,000 square feet of leased space.
- Content**
- Must primarily display the store name.
 - Optional branding elements such as taglines or logos may be included if they enhance clarity or branding.

3. Design Standards

- Graphic Design**
- Simple and clear designs are required.
 - Permanent advertising banners, product names, and promotional materials are prohibited unless allowed as temporary signage.
- Typography**
- Legible typefaces, such as Helvetica, are recommended for all signage, including operational signs.
- Materials**
- Durable and weather-resistant materials must be used.
 - Acceptable materials include formed plastics, paper, and injection-molded materials if aesthetically integrated.

Illumination

- Options include halo lighting, external mounted lights, or concealed illumination methods.
- All illuminated signs must comply with City standards for brightness, color, and electrical codes, including UL labeling where required.

4. Acceptable Sign Types

- Non-Illuminated or Externally Lit Individual Letters:
 - Painted, polished, or other high-quality metal letters illuminated by external light fixtures.
- Halo-Illuminated Letters:
 - Fabricated metal letters with brushed, polished, or enamel finishes, backlit with warm lighting sources.
- Neon Signs:
 - Exposed neon is allowed as an accent for specific uses (e.g., restaurants) but must comply with City brightness standards.

5. Storefront Glazing Systems

- Materials: Durable materials such as etched or sandblasted dimensional metal or die-cut vinyl.
- Size: Lettering should not exceed 8 inches in height, and logos should not exceed 6 inches in diameter.

6. Plaque Signs

- Purpose: For secondary pedestrian identification.
- Size: Must not exceed 2 square feet.
- Materials: Durable materials such as metal, wood, or stone.

7. Temporary Signage Guidelines

In compliance with § 18.23.090 of the City of La Habra Municipal Code, temporary signage is permitted under the following conditions:

- Permissible Temporary Signs**
- Banners
 - Flags
 - A-Frame or Sandwich Board Signs
 - Window Signs (within visibility requirements)
- Placement and Size**
- Location: Must be placed entirely on leased premises and not obstruct pedestrian pathways, entrances, or parking lot traffic flow.
 - Size: Temporary signs must meet City size standards, and window signs should not exceed 25% of the window area.
- Duration and Frequency**
- Maximum of 30 consecutive days per event or promotion.
 - Up to four display periods per calendar year.
 - Extended durations may be permitted for grand openings or special events with City approval.

Design and Materials

- Signs must be durable and professionally designed.
- Content should be business-related and free from offensive or non-business-related messages.
- Temporary signs may not include illumination unless approved.

Prohibited Temporary Signs

- Inflatable advertising (e.g., balloons or figures)
- Pennants, streamers, and decorative elements
- Flashing or animated signs
- Vehicle-mounted signage or hand-held signs (e.g., human sign spinners)

Permitting

- Temporary signs require a Temporary Sign Permit from the City of La Habra.
- Permit applications must include:
 - Sign dimensions, materials, and placement details.
 - Proposed display period and purpose.
 - Contact the City of La Habra Planning Division at (562) 383-4100 or planning@lahabracal.gov.

Removal and Maintenance

- Tenants must remove temporary signs immediately after the permitted period.
- Temporary signs must be well-maintained and free from visible damage during the display period.
- Tenants are responsible for any damage caused during installation or removal.

8. Prohibited Sign Types

- The following sign types are not permitted under City and Landlord regulations:
- Flashing, animated, or audible signs.
 - Internally illuminated awnings.
 - Inflatable advertising devices or vehicle-mounted signs.
 - Roof-mounted or revolving signs.
 - "Can" signs with illuminated translucent backgrounds and silhouetted letters.
 - Vacuum-formed or injection-molded plastic signs.

9. Operational Signage

- Operational signs for displaying hours of operation and emergency contact details must:
- Not exceed 144 square inches in total size.
 - Be made from durable materials such as metal or gold/silver leaf vinyl lettering.

10. Miscellaneous Requirements

- Tenants' signage contractors are responsible for repairing any damages caused during installation or maintenance.
- Highway-visible signage requires explicit approval by the Landlord and the City of La Habra.
- All illuminated signs must comply with local and national electrical codes.



YOUR DREAM OUR PASSION

PLANNING ARCHITECTURE

PASSION ARCHITECTS

19811 Colma Rd., Ste 210
Walnut, CA 91792

O: (909) 345-7800 • C: (213) 833-8888
dvh@passionarch.com

ENGINEER:

PROJECT:

EXTERIOR REMODEL

**303 HARBOR BLVD
LA HABRA, CA 90631**

OWNER:
**DIAMOND HARBOR LLC
1235 MAHOGANY CT,
WALNUT, CA 91789-3834**

**KEVIN LEE
kevin.lee@bhacapro.com
Phone: (626) 975-2521**

REVISIONS/ISSUE FOR:

△	05/28/24	PLANNING DRB
△	08/05/24	DRB CORRECTION #1
△	09/30/24	DRB CORRECTION #2
△	12/13/24	DRB CORRECTION #3
△		
△		
△		
△		
△		
△		



SHEET TITLE:

**SIGN CRITERIA
&
SIGN SAMPLES**

DATE: **05-22-24** PROJECT NO.: **2403**

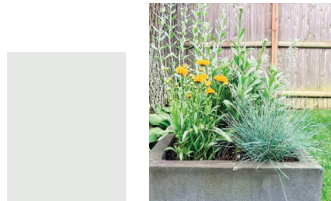
SHEET NUMBER:

A3.3

PROPOSED MATERIALS AND FINISHES- SIGNAGE DESIGN



05 CONCRETE PLANTER : FINISH LAHABRA SILVER GRAY 16 (57) BASE 200



04 SW 7718 OAK CREEK- SEMI GLOSS TO RAINSCREEN METAL PANEL



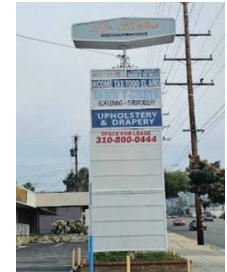
03 BEHR PREMIUM BLACK SEMI-GLOSS TO METAL FOR (E) RAILING AND (E) WINDOW FRAME



02 SIGNAGE INSPIRATION



01 EXISTING SIGN FOR REFERENCE



303 N HARBOR BLVD. LA HABRA, CA90631

EXTERIOR REMODEL

SEPT.15 2024

7