

Prepared for:



2025 Urban Water Management Plan & 2025 Water Shortage Contingency Plan

Public Hearing

May 18, 2026



— Agenda

- Purpose and Overview of the UWMP
- System Description
- Water Use Characterization and Projections
- Water Conservation Target Compliance
- Water Supply Characterization
- Water Service Reliability and Drought Risk Assessment
- Water Shortage Contingency Planning
- Demand Management Measures

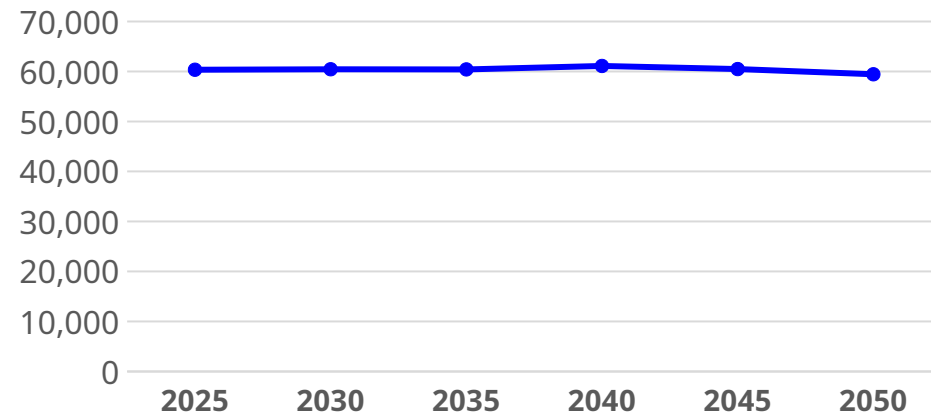
Purpose and Overview of the UWMP

- 2025 Urban Water Management Plan (UWMP) is prepared to comply with the 1983 UWMP Act and California Water Code.
- This 2025 UWMP was prepared as part of a shared-services agreement with MWDIOC along with 22 other partner agencies.
- The 2025 UWMP is an update to the 2020 UWMP and includes the following key elements:
 - » Water use characterization and projections through year 2050
 - » Reporting on water conservation target compliance
 - » Update of the City's existing and planned water supplies
 - » A long-term water supply reliability assessment through year 2050.
 - » The 2025 Water Shortage Contingency Plan (WSCP); an update to the 2020 WSCP
 - » Update of water use efficiency programs from MWDIOC and the City

System Description

- Service Area: 7.3 square miles
- Water System Components
 - » 3 Active wells
 - » 3 reservoirs with a capacity of 16.8 MG
 - » 2 imported water connections to MET
 - » 16 connections with Cal Domestic Water Co.
 - » 5 emergency connections with other agencies
 - » 5 booster pump stations
 - » 165 miles of pipelines

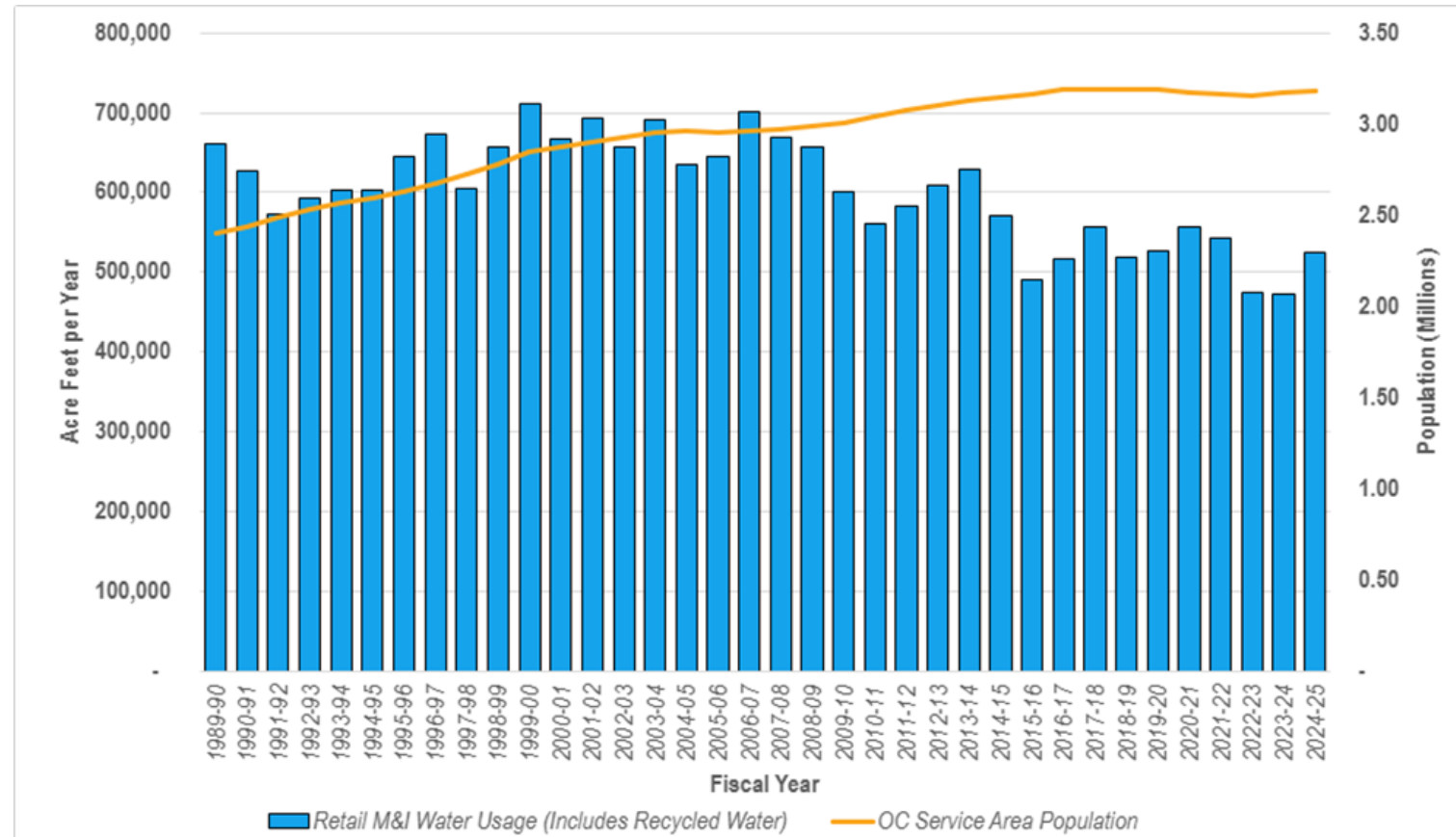
Population Forecast



- City's Population in 2025: 60,348
- Projected Population 2050: 59,440
- Population Change: -1.5%
- Increase in dwelling units: 8.0%
- RHNA Allocation by 2029: 804 units
- Projected number of ADUs: 353

Water Use Characterization and Projections

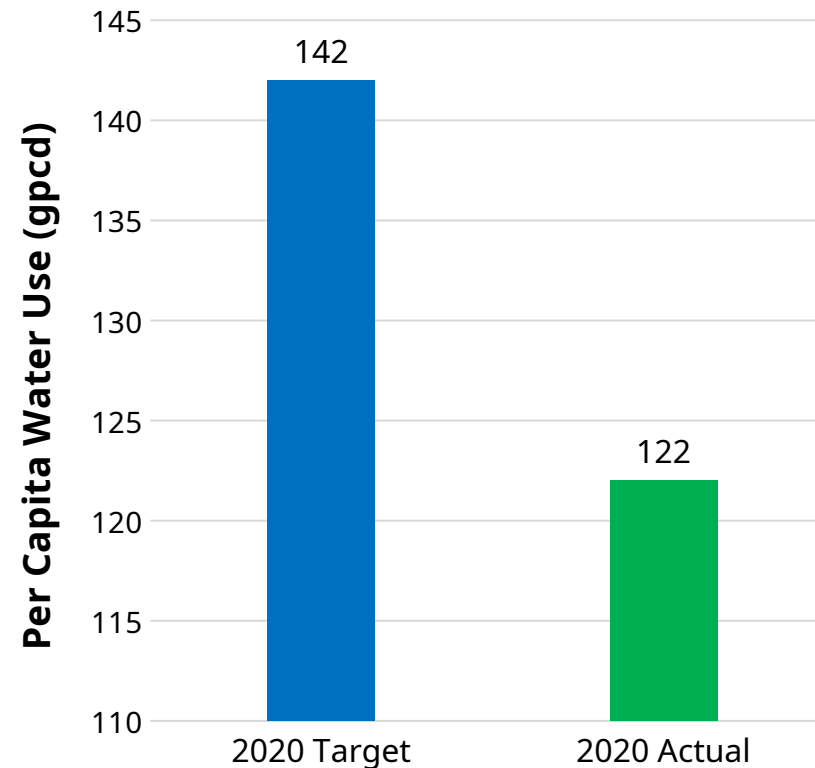
- The City participated in the development of the 2025 Orange County Water Demand Projection Model led by MWDOC.
- City's water use in 2025:
 - » 77% residential
 - » 14% commercial, industrial, and institutional
 - » 9% dedicated irrigation
- City's demand projection:
 - » 2025: 7,627 afy
 - » 2050: 7,640 afy
 - » Change: 0.6%



Total demand in Orange County continues to trend down, while population has increased more than 700,000 (+30%)

Water Conservation Target Compliance

- The 2009 Water Conservation Act (SB X7-7) mandated 20% reduction in urban per capita water use by 2020 (aka 20x2020).
- MWDOC's Water Use Efficiency (WUE) program helped meet the goals through the Orange County 20x2020 Regional Alliance.
- Participating retailers, including the City of La Habra, complied collectively rather than individually.



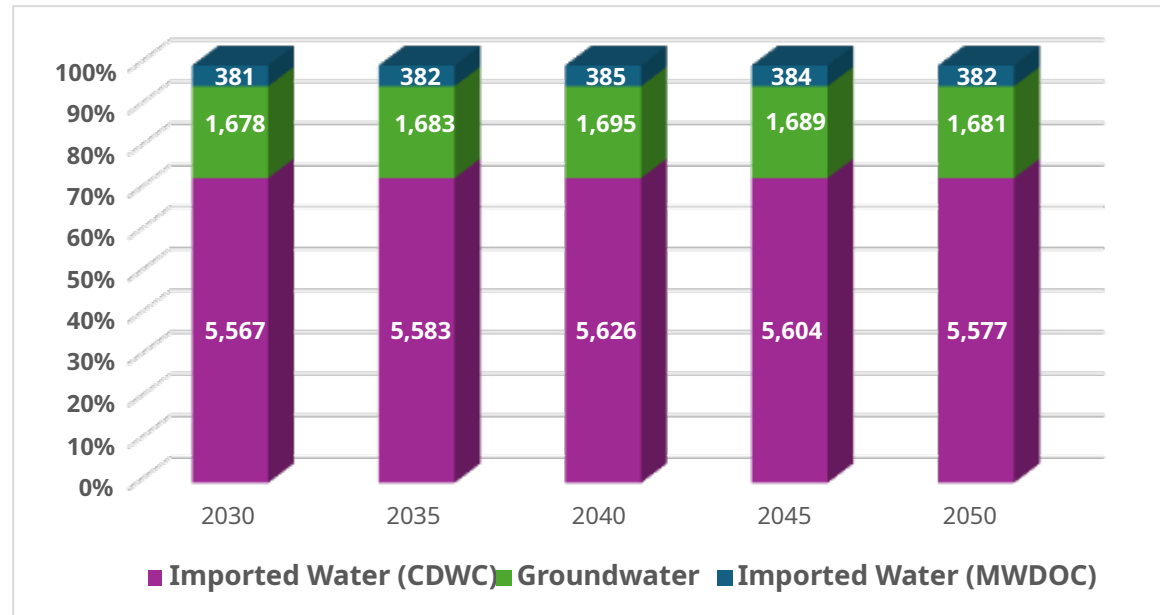
The City is in compliance with the mandated 20% water use reduction and WUE target.

Water Supply Characterization

- City's existing supply mix:
 - » Groundwater: 72.7%
 - » Imported Water: 4.8%
 - » Imported Groundwater: 72.7%
- The City has 16 inter-connections with adjacent agencies and 5 emergency connections.

The City's water supply mix is not projected to change through 2050.

City's Projected Water Supply Mix



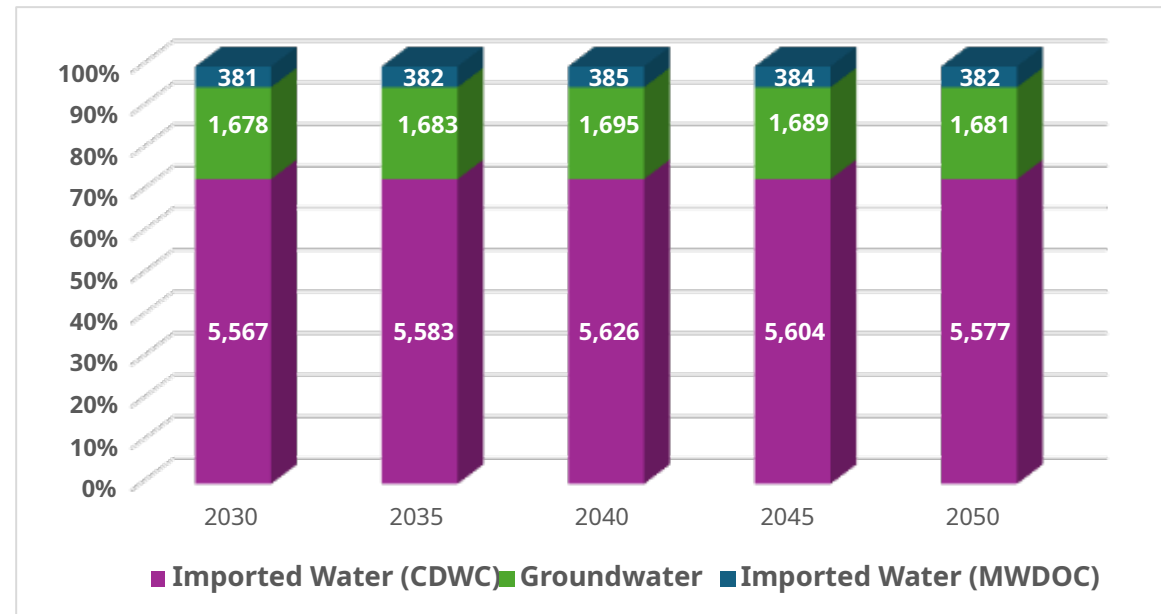
The City's water supply mix is not projected to change through year 2050

Water Supply Characterization

- City's existing supply mix:
 - » Groundwater: 72.7%
 - » Imported Water: 4.8%
 - » Imported Groundwater: 72.7%
- The City has 16 inter-connections with adjacent agencies and 5 emergency connections.

The City's water supply mix is not projected to change through 2050.

City's Projected Water Supply Mix

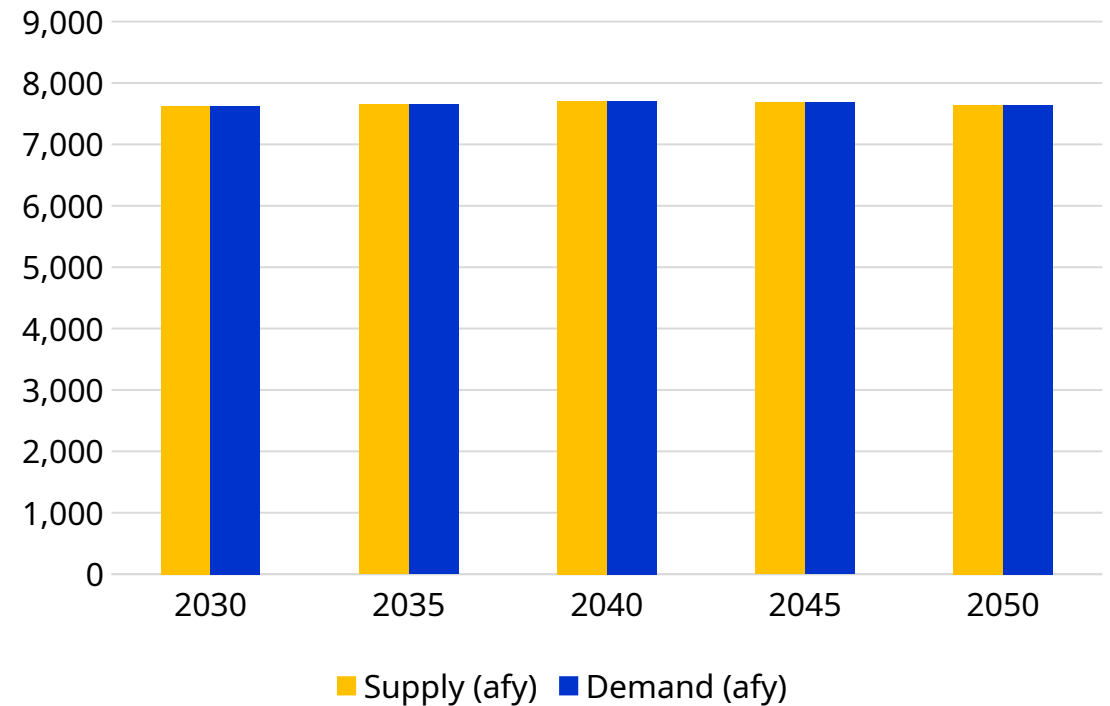


The City's water supply mix is not projected to change through year 2050

Water Service Reliability and Drought Risk Assessment

- **Water Service Reliability** is assessed by comparing the projected water demand with the projected available water supplies
- **Near-Term Assessment** developed for 2026-2030 based on driest 5-year sequence for supply
- **Long-Term Assessment** are developed in 5-year increments from 2030-2050 for three hydrologic conditions:
 - » Normal Water Year
 - » Single Dry Year
 - » Drought lasting 5 Consecutive Dry Years

Example: Single Dry Year Assessment



The City has long-term supply reliability under normal, single dry year, and 5 consecutive drought years.

Water Shortage Contingency Planning

- The WSCP is both a required element of the UWMP as well as a stand-alone document.
- No new requirements were added for the 2025 WSCP
- Key WSCP elements:
 - » Analysis of water supply reliability
 - » Annual water supply and demand assessment
 - » 6 standard water shortage levels
 - » Shortage response actions
 - » Communication protocols

Stage	Shortage Percentage	Shortage Response Actions
0	0% (normal)	<ul style="list-style-type: none"> • City proceed with planned practices • Permanent water waste prohibitions • Non-functional turf ban effective 1/1/2027
1	Up to 10%	<ul style="list-style-type: none"> • Same as level 0 • Up to 10% consumer demand reduction with mandatory level 1 conservation measures
2	11-20%	<ul style="list-style-type: none"> • Same as level 1 • Up to 20% consumer demand reduction with mandatory level 3 conservation measures
3	21-30%	<ul style="list-style-type: none"> • Same as level 2 • Up to 30% consumer demand reduction required • Declare Water Supply Shortage Emergency
4	31-40%	<ul style="list-style-type: none"> • Same as level 3 • Up to 40% consumer demand reduction required
5	41-50%	<ul style="list-style-type: none"> • Same as level 4 • Up to 50% consumer demand reduction required
6	51-60%	<ul style="list-style-type: none"> • Same as level 5 • Up to 60% consumer demand reduction required.

Demand Management Measures

- **City's** Water Use Efficiency Program and Rebates 2020-2025:
 - » High Efficiency Clothes Washers
 - » High Efficiency Toilets
 - » Flow Monitoring Devices
 - » Turf Replacement Programs
 - » Landscape Design Rebate Programs
 - » Spray to Drip conversion
 - » Smart Timers
 - » Rain Barrels

The City collaborates with MWDOC to implement water conservation programs to reduce water demands

- **MWDOC's** Demand Management Implementation Assistance Programs:
 - » Technical Assistance Program
 - » Meter Area Measurements
 - » Regional Rebate Programs
 - » Local Program Assistance
 - » Water Conservation Research



Vista Grande Conservation Garden

Prepared fo



2025 Urban Water Management Plan & 2025 Water Shortage Contingency Plan

Public Hearing

QUESTIONS

?
May 18, 2026

