

WE
ARE
HERE

W



W

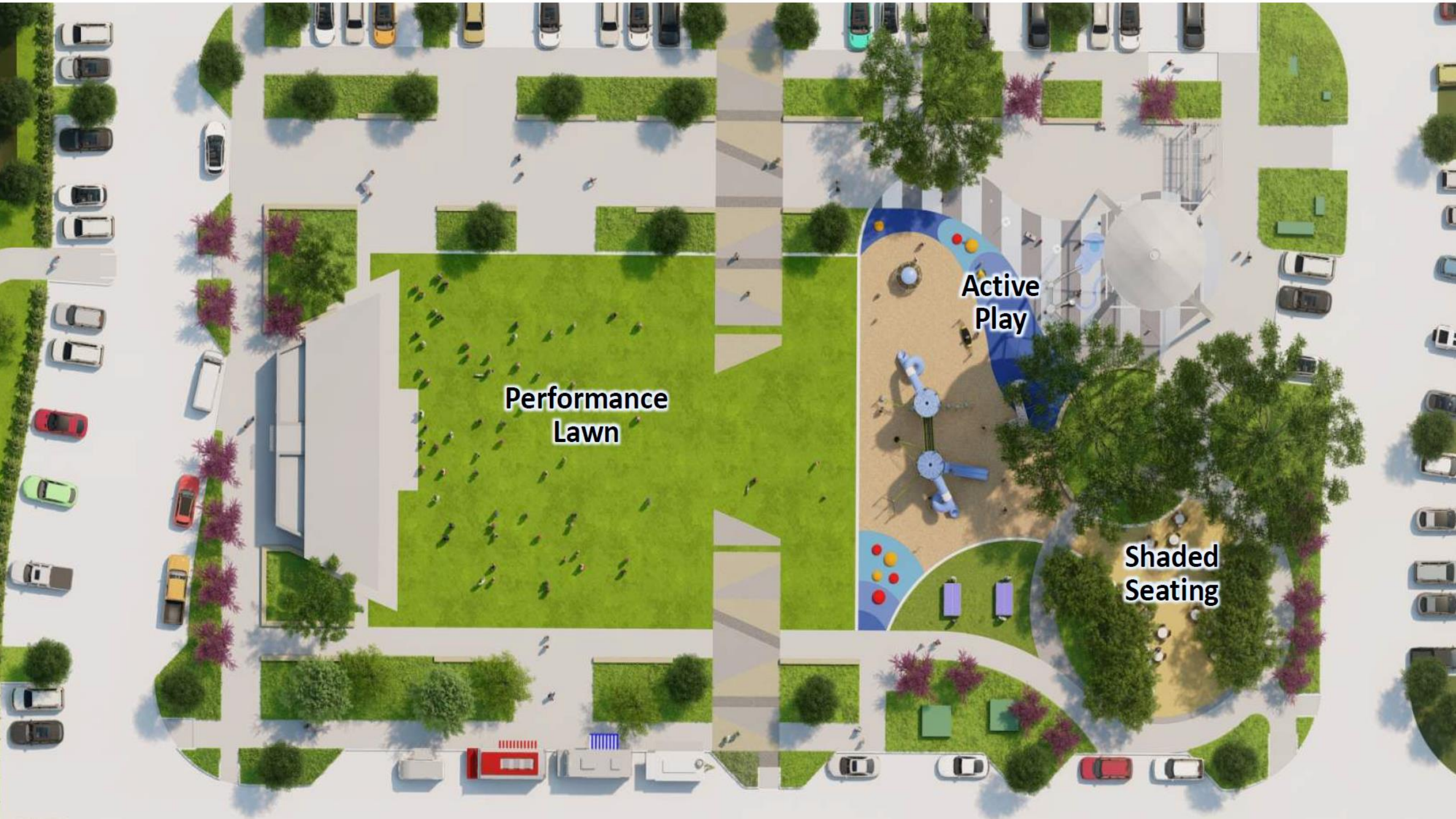
W



LITTLE ELM



AT THE LAKEFRONT



**Performance
Lawn**

**Active
Play**

**Shaded
Seating**



Overview

- Current Obligations
 - \$4,850,987
- Current Funding
 - \$4,862,477



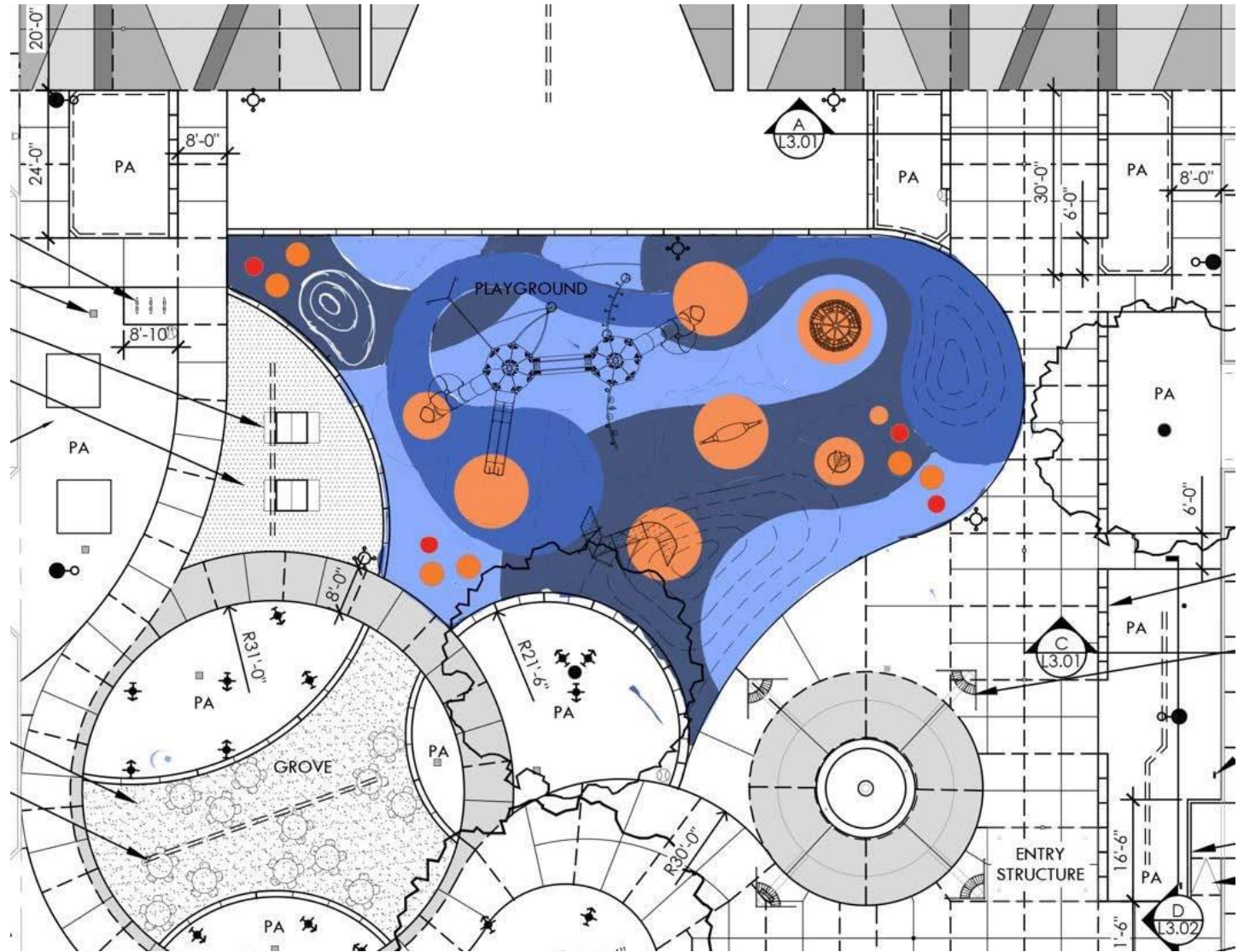
LITTLE ELM

Items Currently Funded

- Performance Pavilion
- Lawn Area – Artificial Turf
- Playground with Poured-in-Place Surfacing
- Water Tower Lighting Package (video)
- Lawn Games and Seating
- LETX Sign
- Neighborhood Sidewalk Connection
- Electrical for Christmas Tree, Landscape Lighting
- Water Tower Painted Lettering
- A/V, Security Package (Speakers, Cameras)



Playground Surface Design



Placemaking



Funding Sources

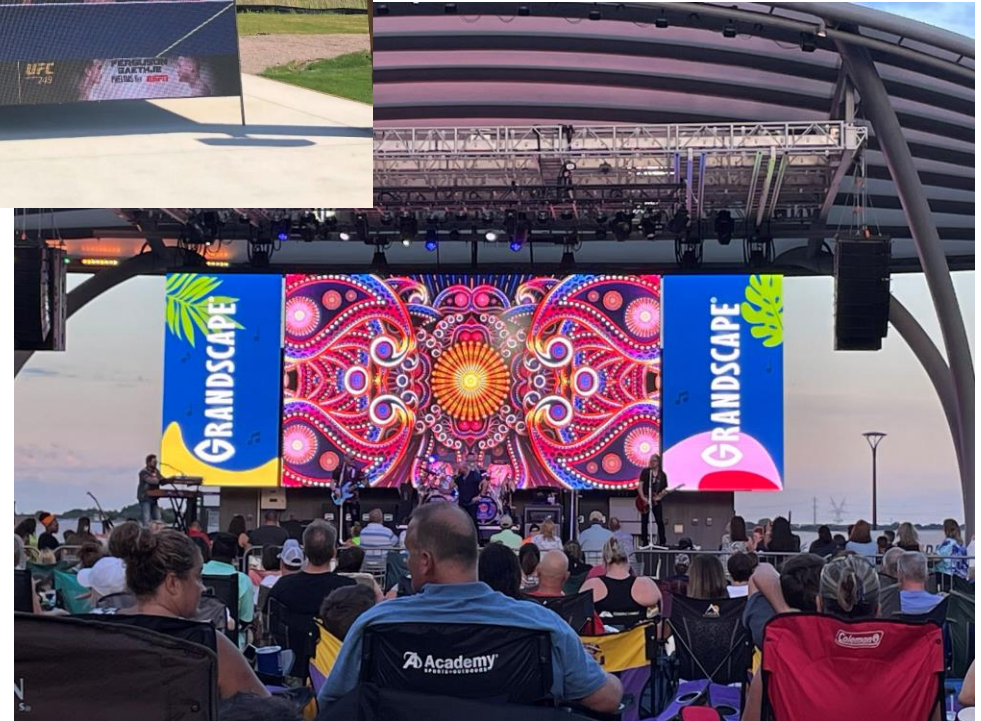
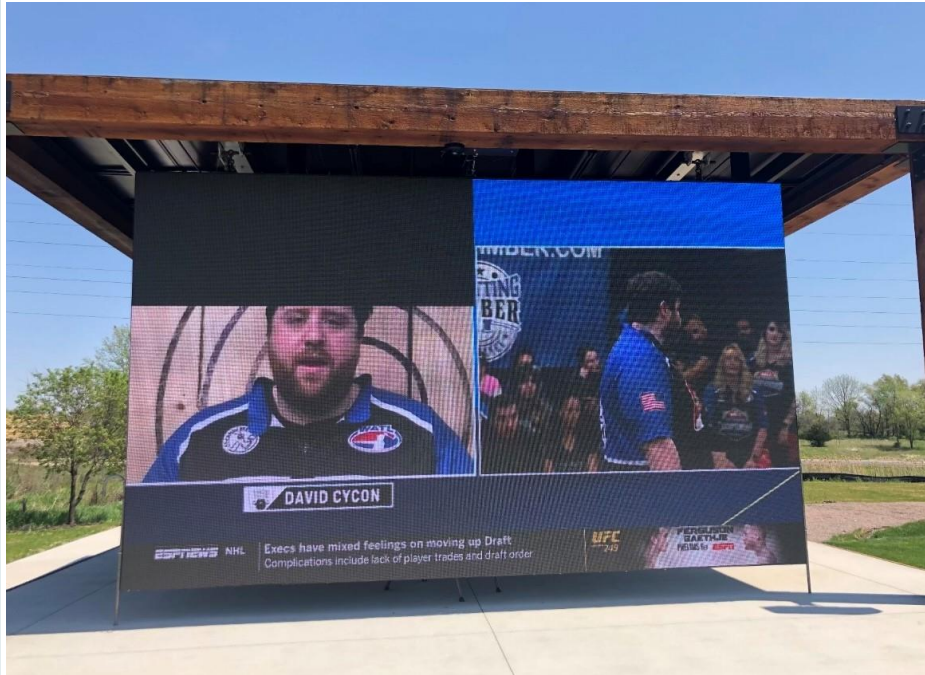
Source	Amount
Certificate of Obligation (paid for by TIRZ #3)	\$2,526,796
Transfer from TIRZ #3	\$500,000
Placemaking funds from TIRZ #3	\$40,000
Palladium	\$625,362
Capital Recovery Fees	\$900,000
Lakefront Parking Project Savings	\$270,319
Total	\$4,862,477



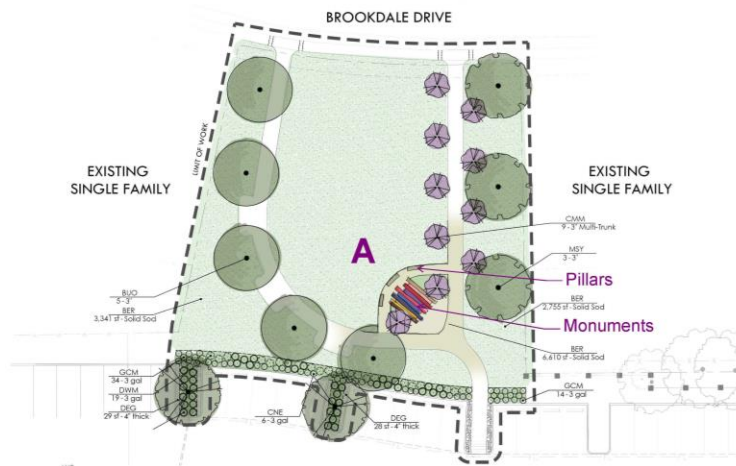
LITTLE ELM

Video Wall (\$90,000)

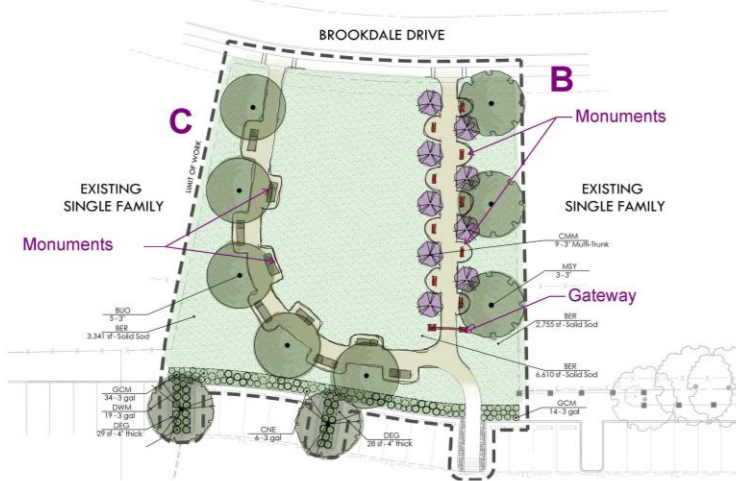
Potential Additions



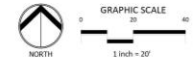
D9 Plaza



Sketch Idea Option A



Sketch Idea Option B & C



Divine Nine Inspiration Imagery



The official Divine Nine organizations include four sororities and five fraternities...Alpha Kappa Alpha, Delta Sigma Theta, Zeta Phi Beta, Sigma Gamma Rho, Kappa Alpha Psi, Omega Psi Phi, Alpha Phi Alpha, Phi Beta Sigma, and Iota Phi Theta.

Concept Imagery A: "Divine Nine Plaza"

- Integral color concrete w/ associated markers
- cast in place benches recognizing common pillars
- "EDUCATION" "COMMUNITY SERVICE" & "UNITY"



Concept Imagery B: "Divine Nine Allee"

- Gateway structure from park side
- Educational monuments per organization at each stop



Concept Imagery C: "Divine Nine Row"

- cast in place pillars w/ seating
- integrated LED twinkle lights
- matching color components to each organization



