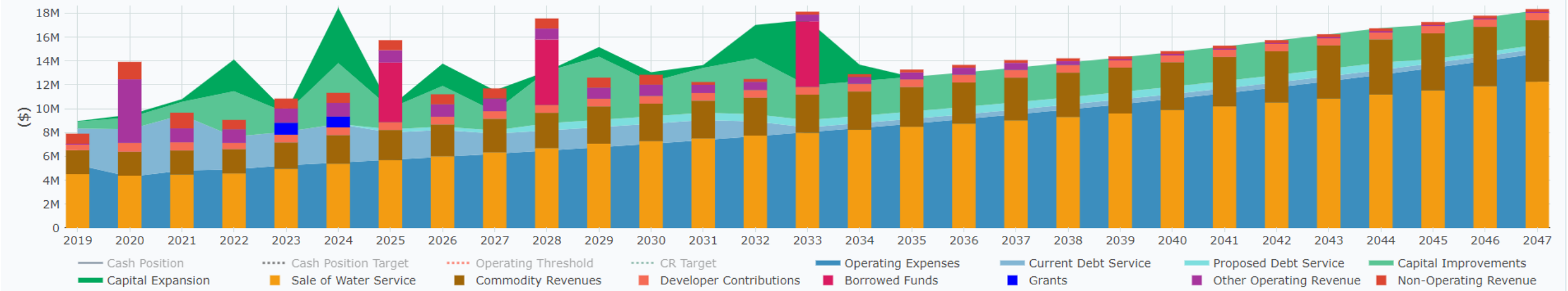


Long Term Financial Model

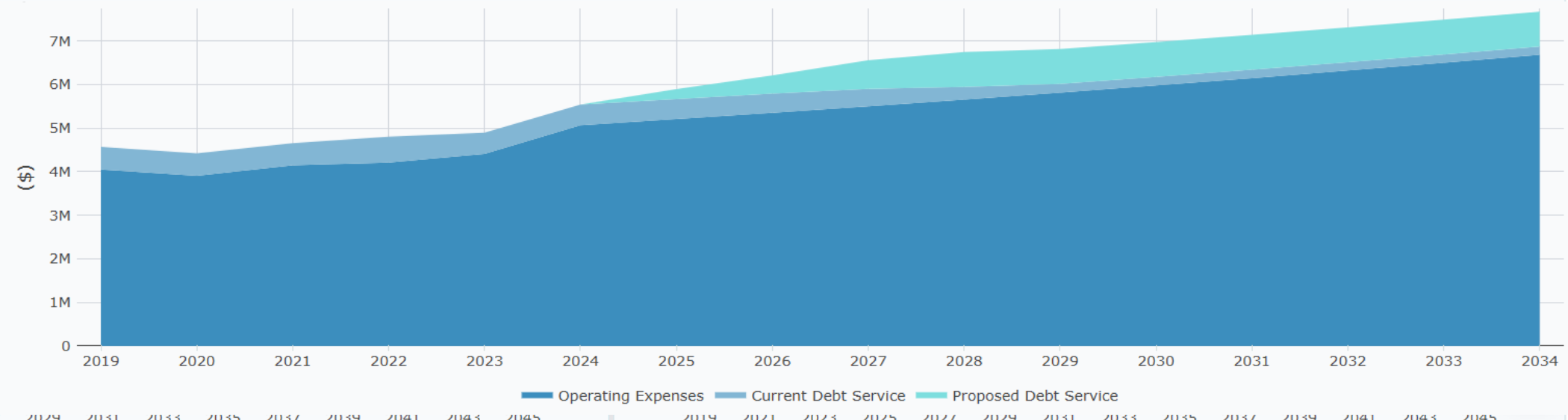
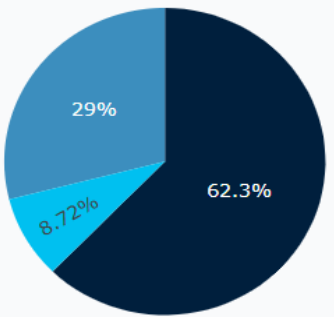


Full

Financial Model - Eastown Baseline Demo (Fix/Var)

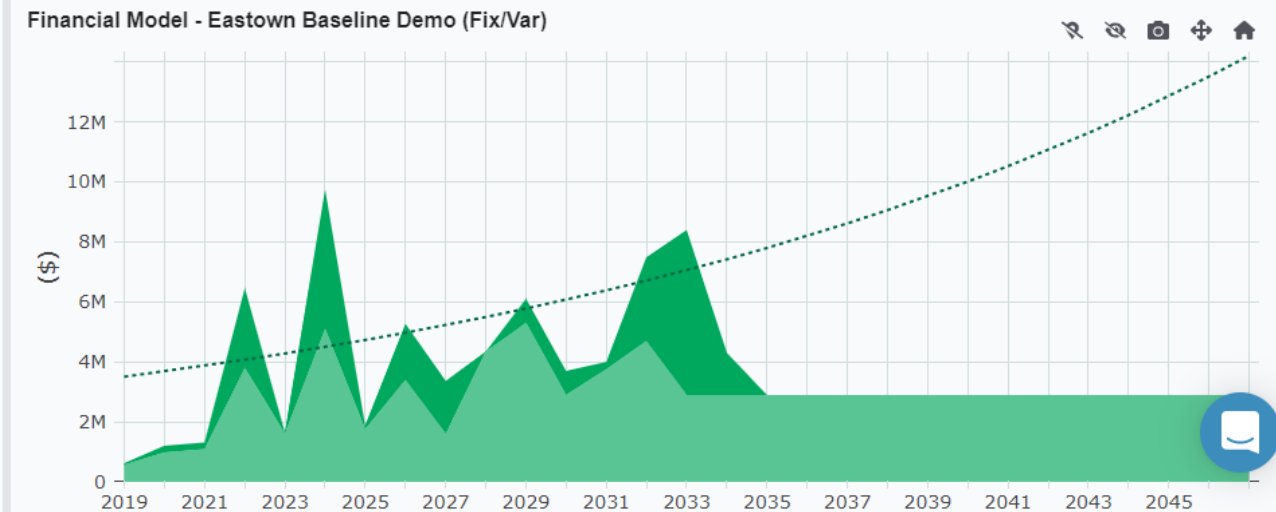
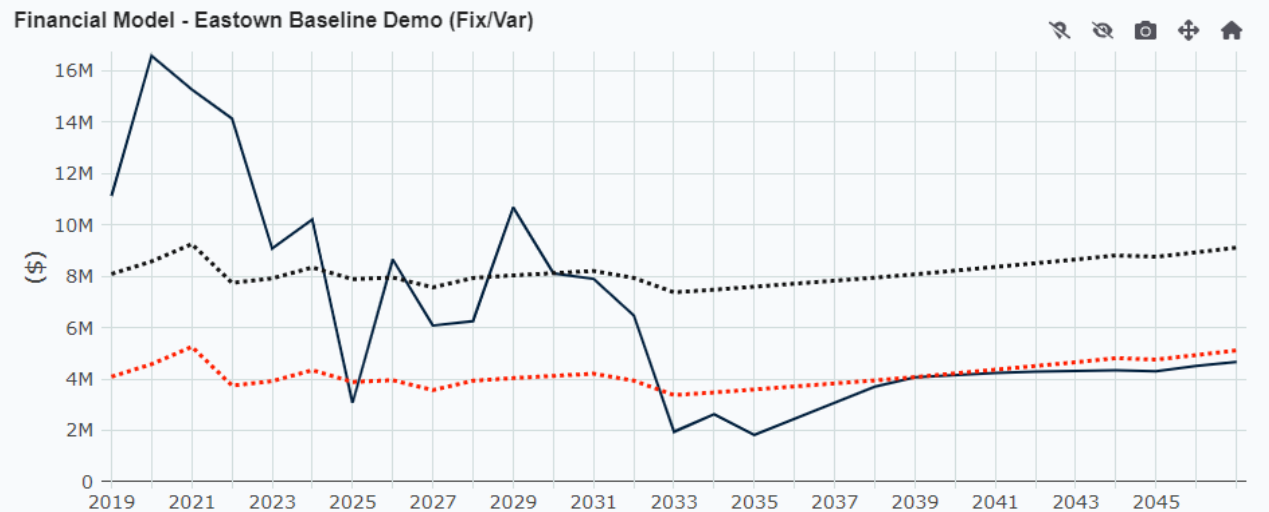
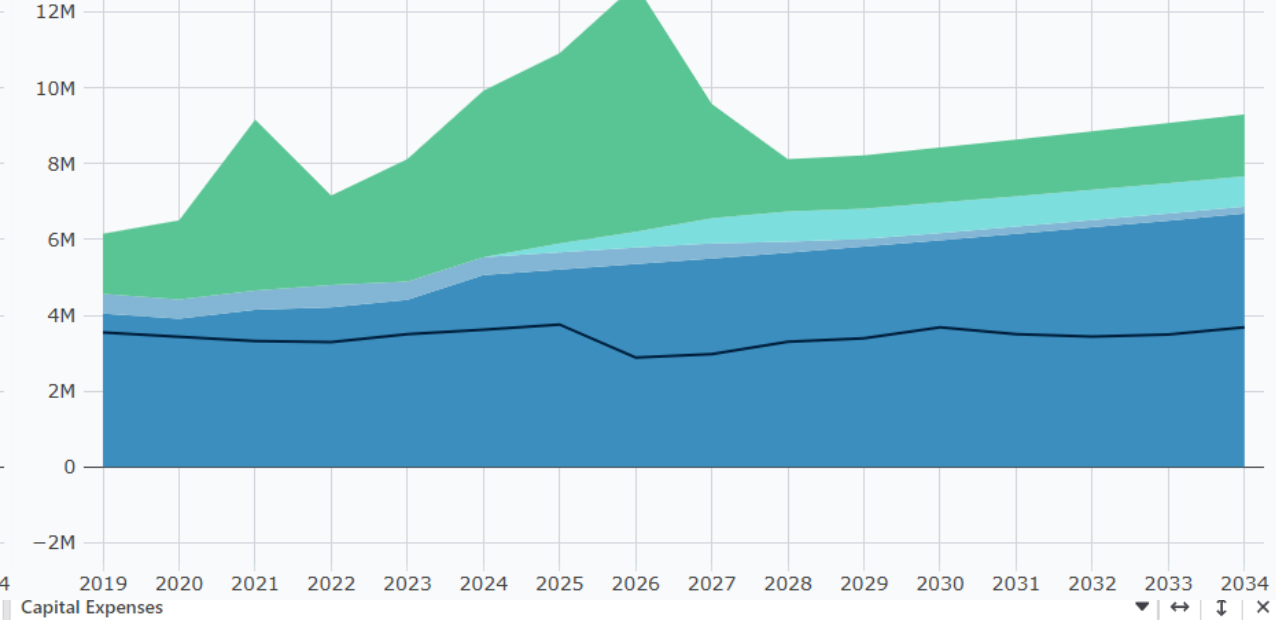
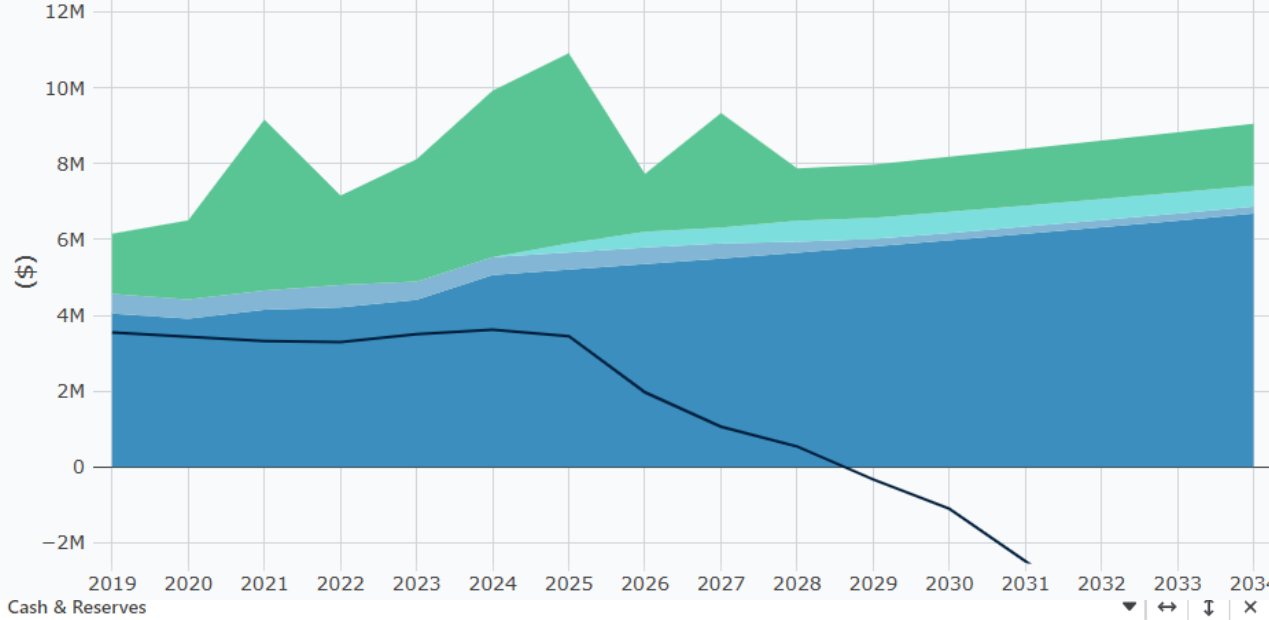


Group Summary Type 2022 Fiscal Year



Capital Planning & Reinvestment

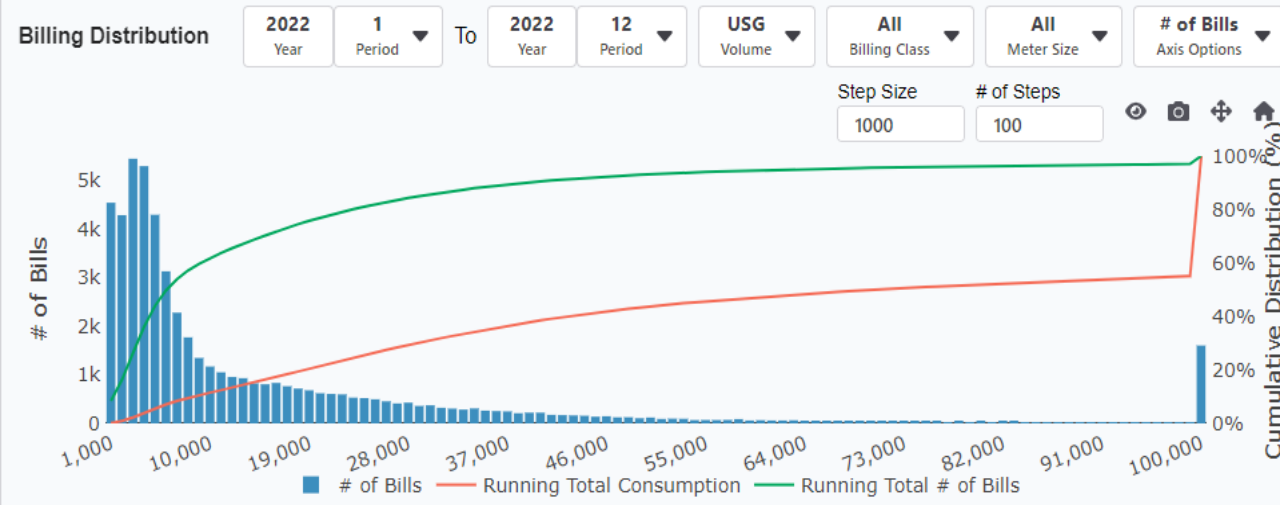
Financial Models: Baseline Model, Baseline Model Copy - Water Project



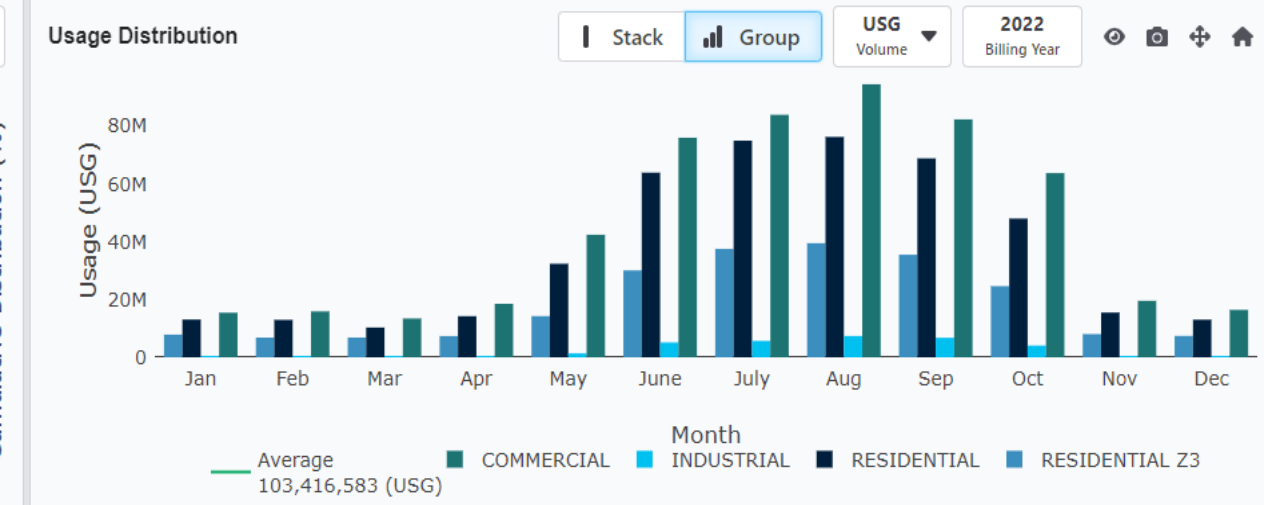
Utility Rate Design

+ New Layout
Open
Save Layout
Rate Impact Analysis
Scratch Pad
Presentation
Save Template

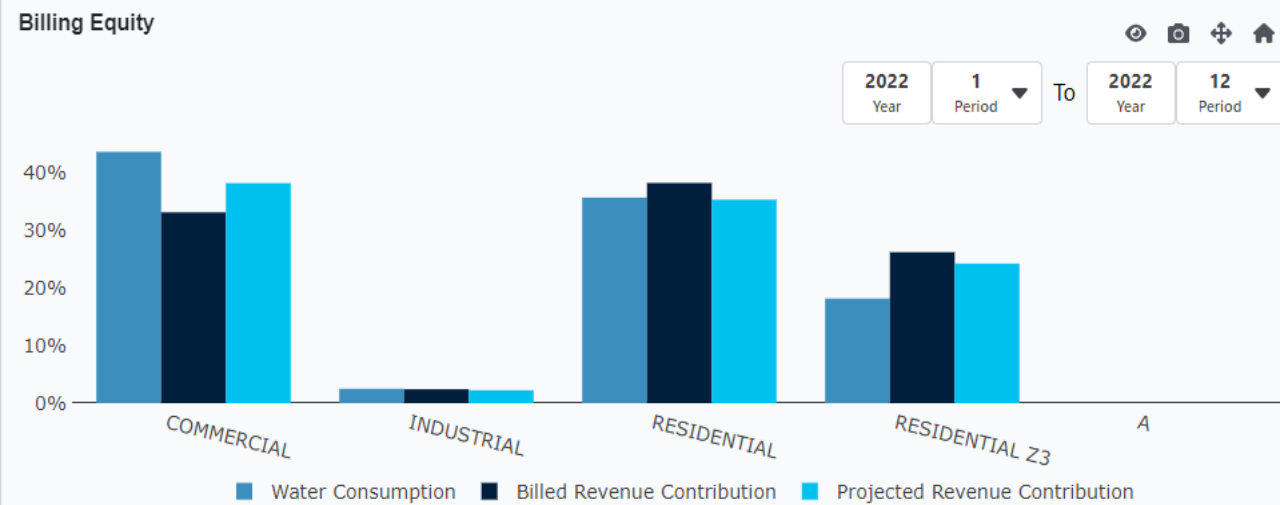
Billing Distribution



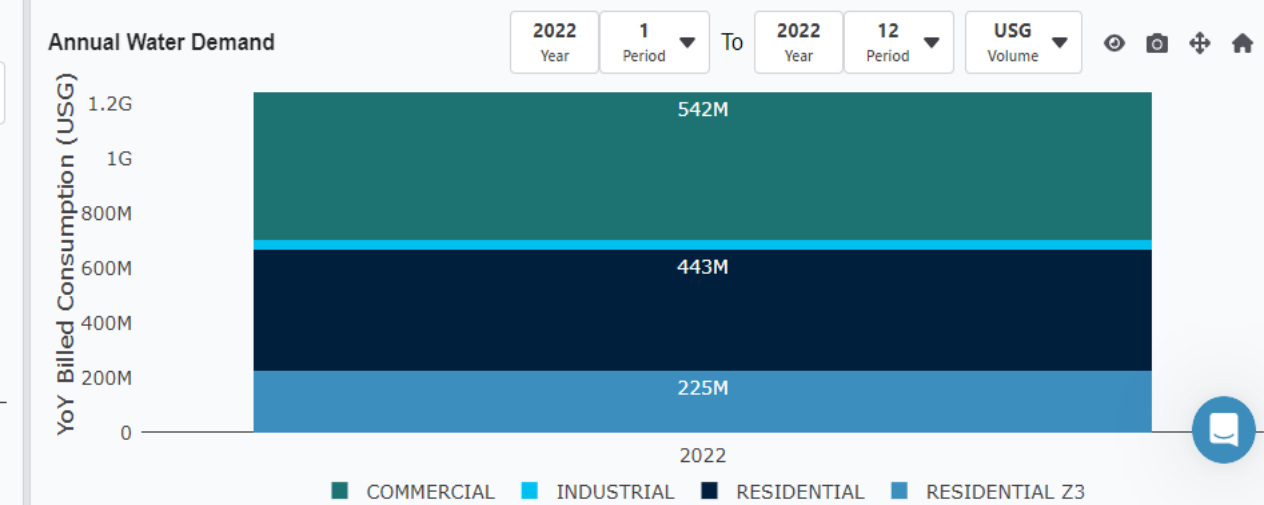
Usage Distribution



Billing Equity



Annual Demand



Asset Replacement Schedule



WATERWORTH™



WATERWORTH™

Eastown Baseline Demo (Fix/Var) Scenario

Notes

Eastown Organization

Eastown Water Water



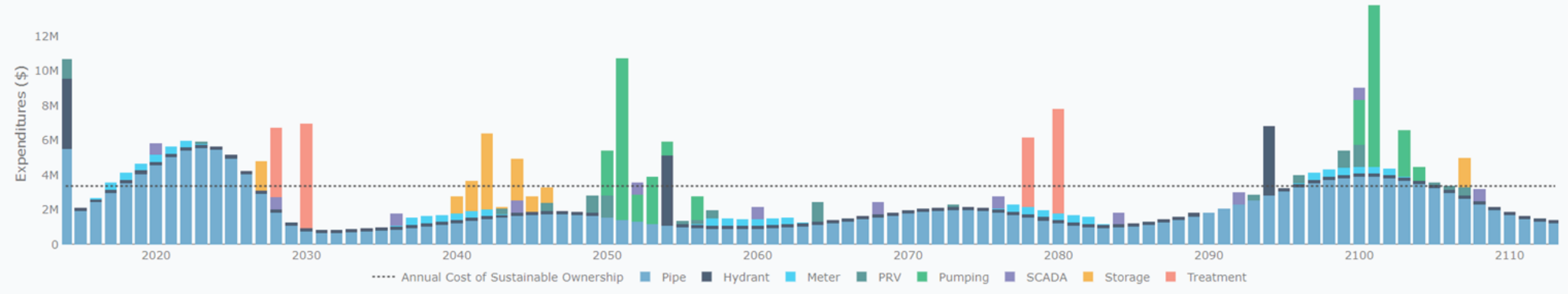
+ New Layout Open Save Layout New Layout

Scratch Pad Presentation

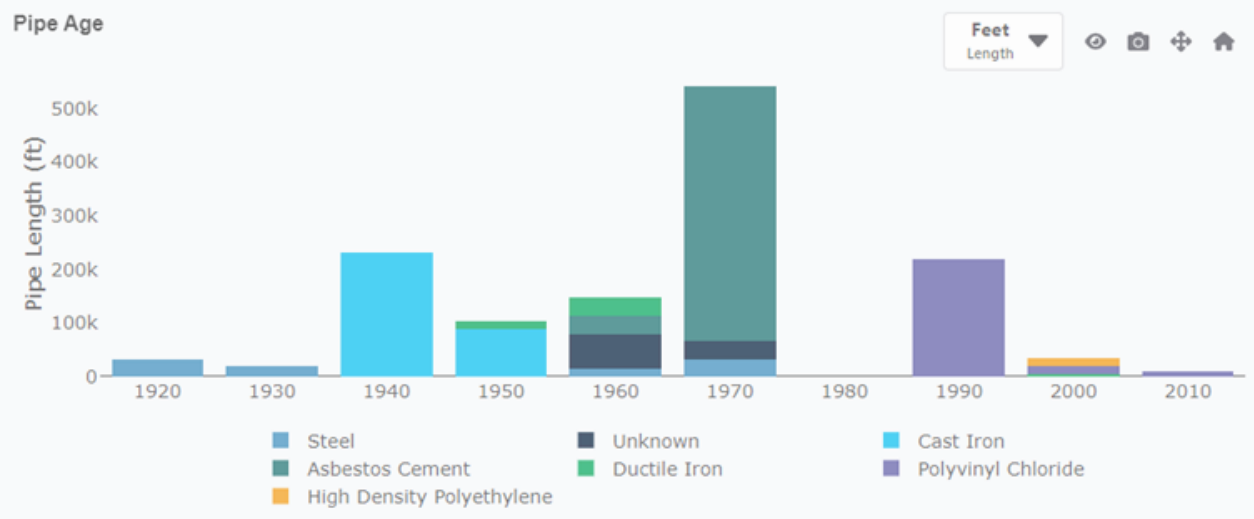
Save Template

Replacement Schedule

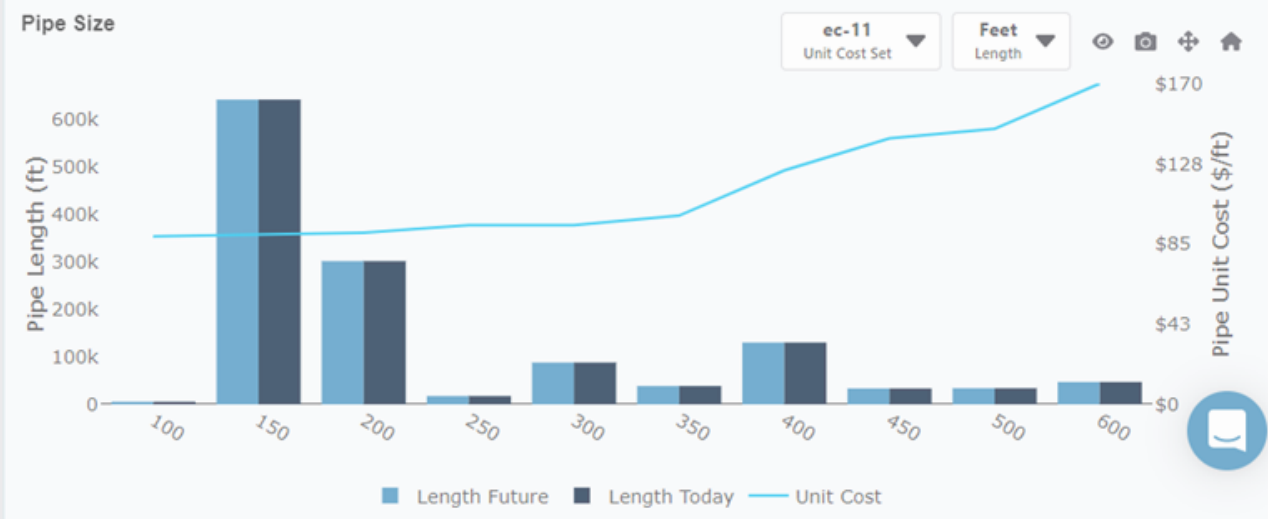
Asset Replacement Schedule (ARS)



Linear Asset Age

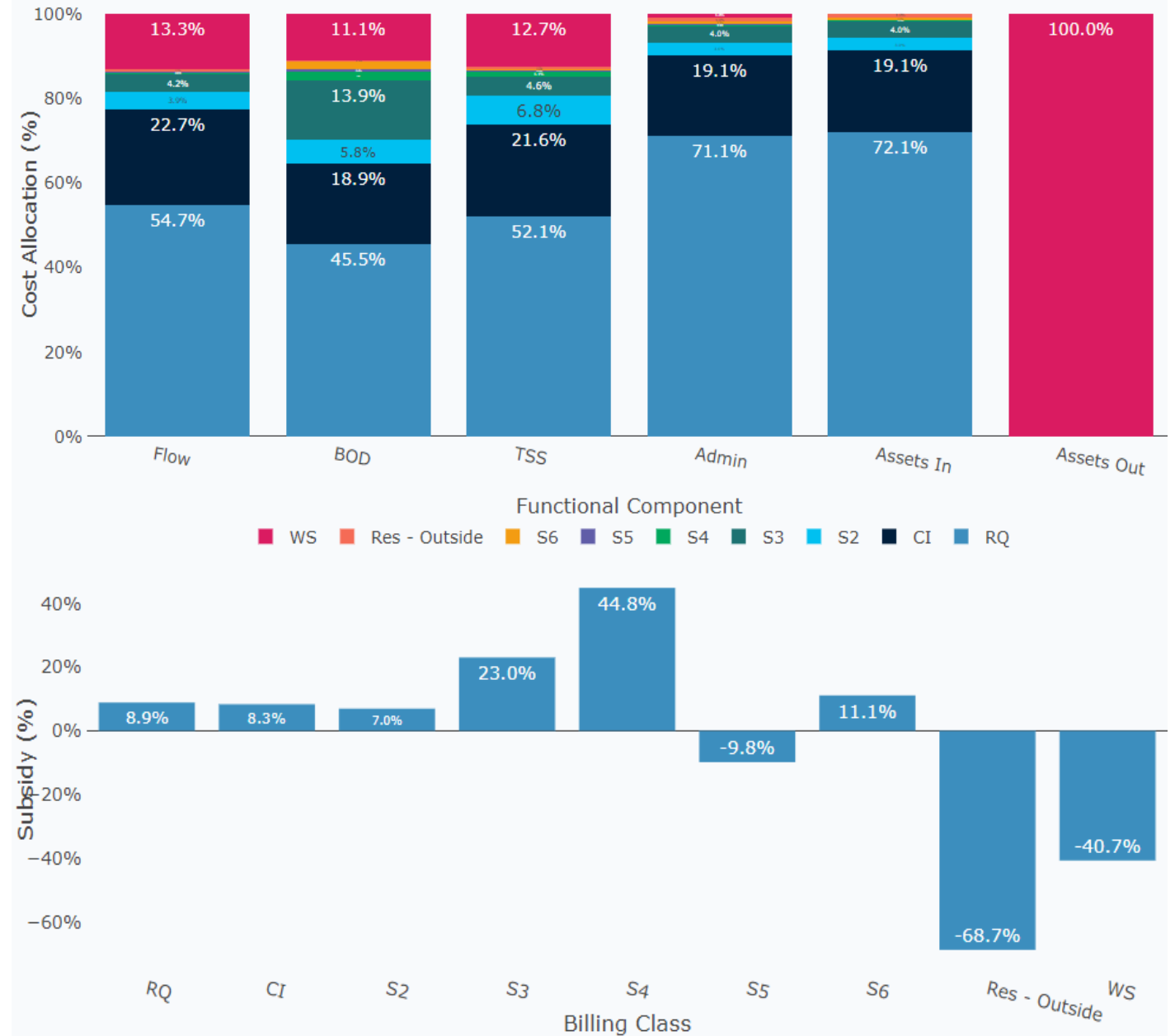


Linear Asset Size



Cost of Service Analysis

1. Cost Allocation between **Customer Categories**
2. Determine Current **Level of Inequity**
3. Recalibrate Rates to **Promote Fairness**

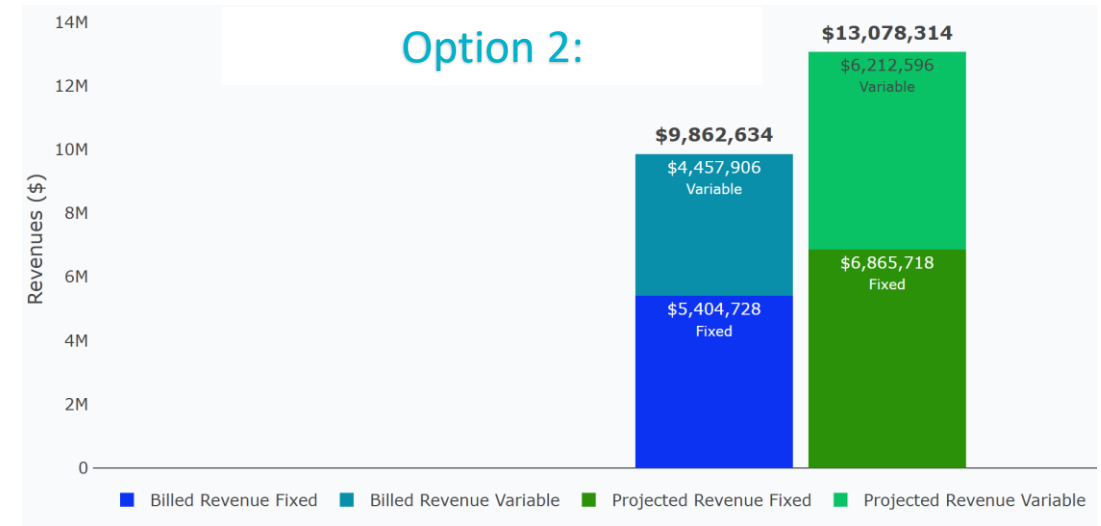
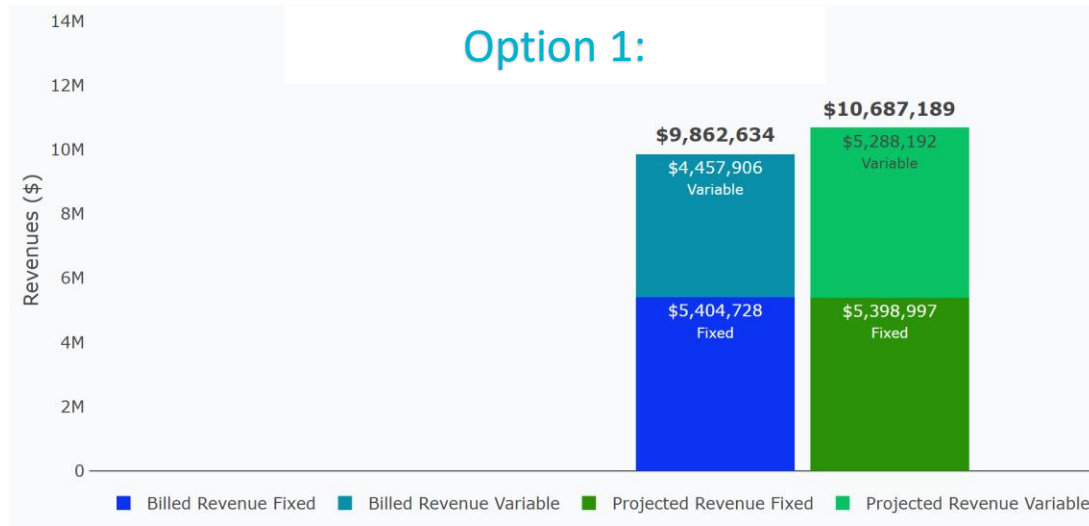


Designing Utility Rates in Waterworth

Compare multiple Rate Cards to see which performs best to achieve key goals:

- Revenues
- Equity
- Affordability
- Conservation
- Asset longevity

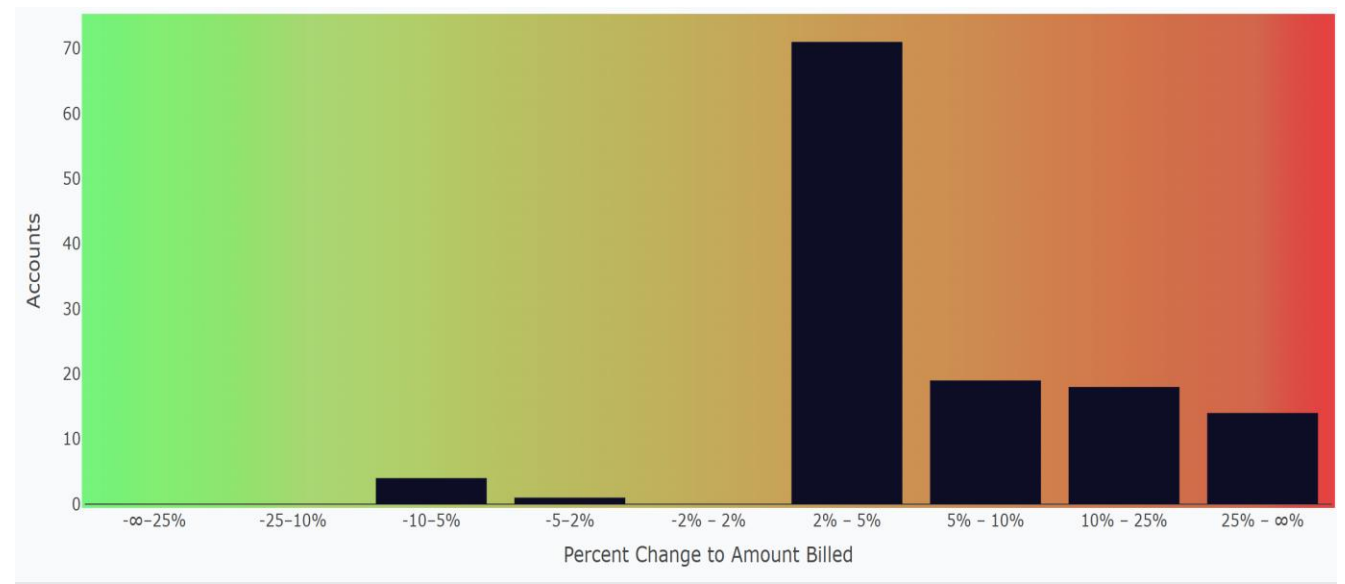
Rate Cards									+ Rate Card
Rate Card	Description	Start Year	Start Period	End Year	End Period	Date Created	Date Edited		Active
Northtown Rate Option 1		2023	1	2025	12	Feb 11, 2025	Mar 26, 2025	i	<input checked="" type="checkbox"/>
Northtown Rate Option 2		2023	1	2025	12	Feb 11, 2025	Mar 10, 2025	i	<input type="checkbox"/>



Measuring Billing Impact in Waterworth

Analyze detailed Before/After Bills on a highest-to-lowest impact scale:

Bill Parameters							Revenue	
Period	Billing Class	Meter Size	Billing Multiplier	Consumption [kUSG]	Csv Row	Account Id	Billed	Projected
8	Residential	5/8	1	1,013	38	12223-001	\$131	\$10,406
2	Residential	5/8	1	1,327	34	01357-001	\$6,461	\$13,615
3	Residential	5/8	1	805	289	02079-001	\$3,985	\$8,273
3	Residential	5/8	1	798	291	07683-001	\$3,949	\$8,196
2	Residential	5/8	1	779	295	05265-001	\$3,862	\$8,007
4	Residential	5/8	1	580	316	19247-001	\$2,915	\$5,963
2	Residential	5/8	1	543	322	14599-004	\$2,740	\$5,585
9	Residential	5/8	1	489	330	05218-001	\$2,558	\$5,035
3	Residential	5/8	1	463	335	03934-002	\$2,358	\$4,762
2	Residential	5/8	1	458	336	08049-001	\$2,334	\$4,710
4	Residential	1	1	226	419	10610-001	\$262	\$2,380
2	Residential	5/8	1	369	354	15124-001	\$1,911	\$3,797
1	Residential	1	1	349	363	09176-001	\$1,818	\$3,640

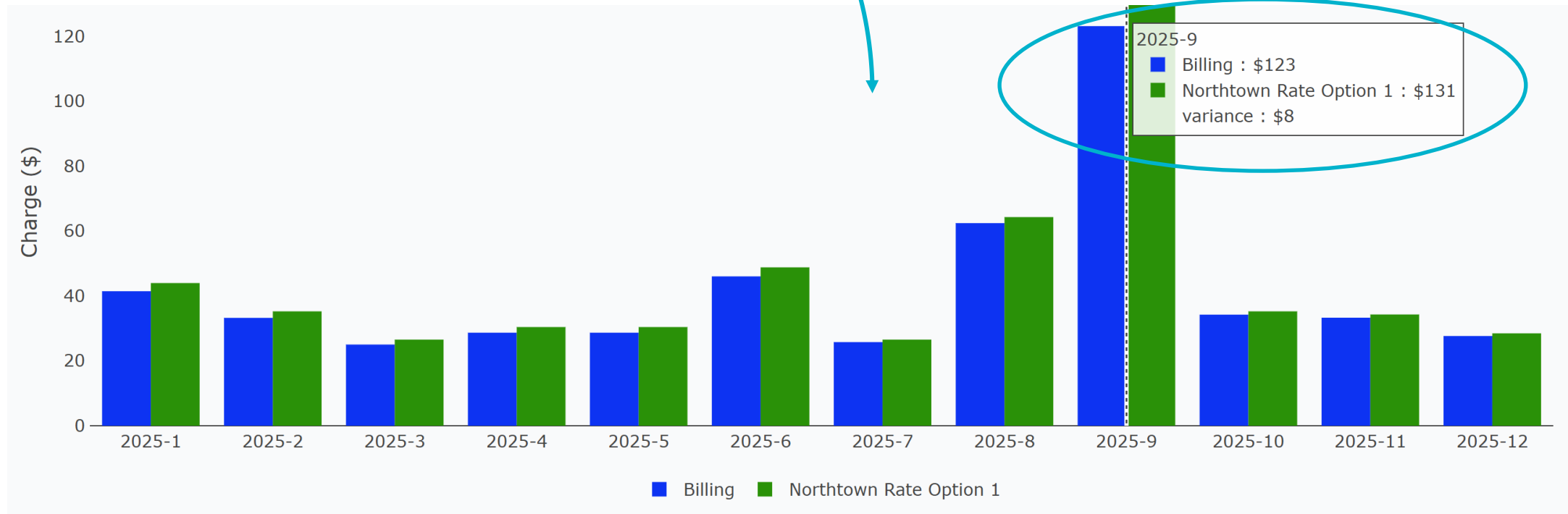


See overall % Billing impact of recommended Rate Card

Measuring Billing Impact in Waterworth

Drill down to an account-by-account basis to see the dollar difference between last year's bill, and next year's forecasted bill with the same consumption

Example CustomerID - 19996-001



All Public Funds & Services

1. Analyze many **Infrastructure-Based Services**
2. View **Aggregated Analysis**
3. Consistency of **Data Visualization**
4. Easier **Communication**

Select a service area to display.

To avoid this message in the future, change your preferences.

Northtown Water (Water)

Northtown Sewer (Wastewater)

Northtown Stormwater (Stormwater)

Northtown General Fund (General Fund)

Northtown Marina (Marina)

Northtown Streets (Road)

Northtown Solid Waste (Solid Waste)

Northtown Fire Rescue (Fire Rescue)

Northtown Airport (Airport)

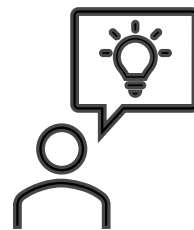
Northtown Electric (Electric)

Northtown Recycling (Recycling)

Northtown Fleet (Fleet)

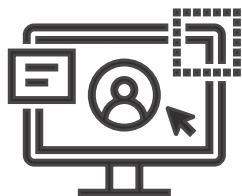
- Scenario building and analysis
- Ongoing advisory
- Remote council presentations

- Real-time planning and analysis
- Effortless collaboration
- Get the decisions you need



Fractional CSO

- Data onboarding = Zero learning curve
- Updates model with new data
- Model checks and validation



Cloud SaaS



Model Manager