

Lorain OH - Downtown Infill Project

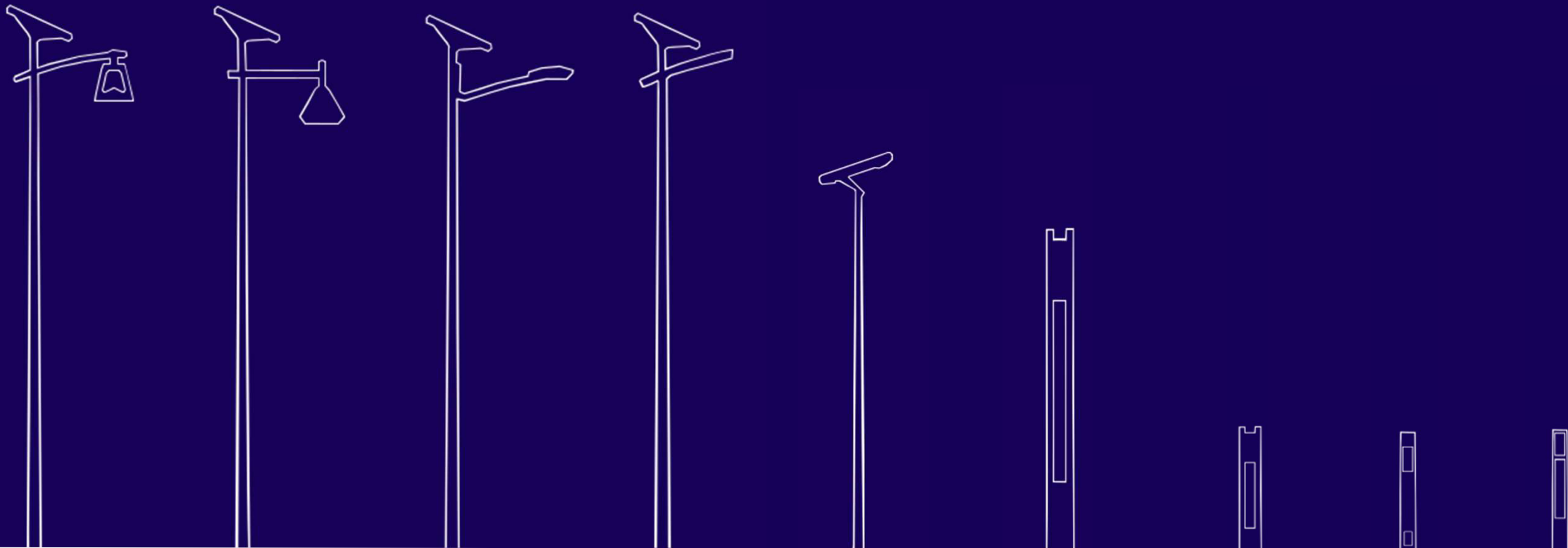




Table of Contents

- 01 - Lighting Your Project
- 02 - Technical Specifications
- 03 - Projects



LIGHTING YOUR PROJECT

01

ESSENTIAL SmartLight

Sleek Timeless Design

The **Essential** blends modern aesthetics with high efficiency, making it ideal for **residential streets, busy roadways, parking lots, trails, and playgrounds**. This solar-powered street light features **optimized LED placement**, providing **consistent, high-visibility** illumination while reducing energy costs. Note: Only 3000K luminaires are Dark Sky compliant.

Characteristics

- Vintage-inspired fixture

Applications

Residential streets, busy roadways, parking lots, trails, and playgrounds.



Downtown Infill Project



Lighting Plan Rev A

By: Mateo Chevalier
 mateo.chevalier@fonroche.us
 Project Number: G11671
 Date: 5/7/2026

2224 SE Loop 820, Building C
 Fort Worth, TX 76140
 Phone Number: (339) 225 4530
 www.fonrochesolarlighting.com

Luminaire Schedule

Symbol	Qty	Label	Arrangement	LLF	Luminaire Lumens	Mounting Height	Arm
	15	T3-CK16B-4K-4'-36W	SINGLE	0.900	6885	22	4.577

Calculation Summary

Label	CalcType	Units	Avg	Max	Min	Avg/Min	Max/Min
Infill	Illuminance	Fc	0.88	2.6	0.2	4.40	13.00



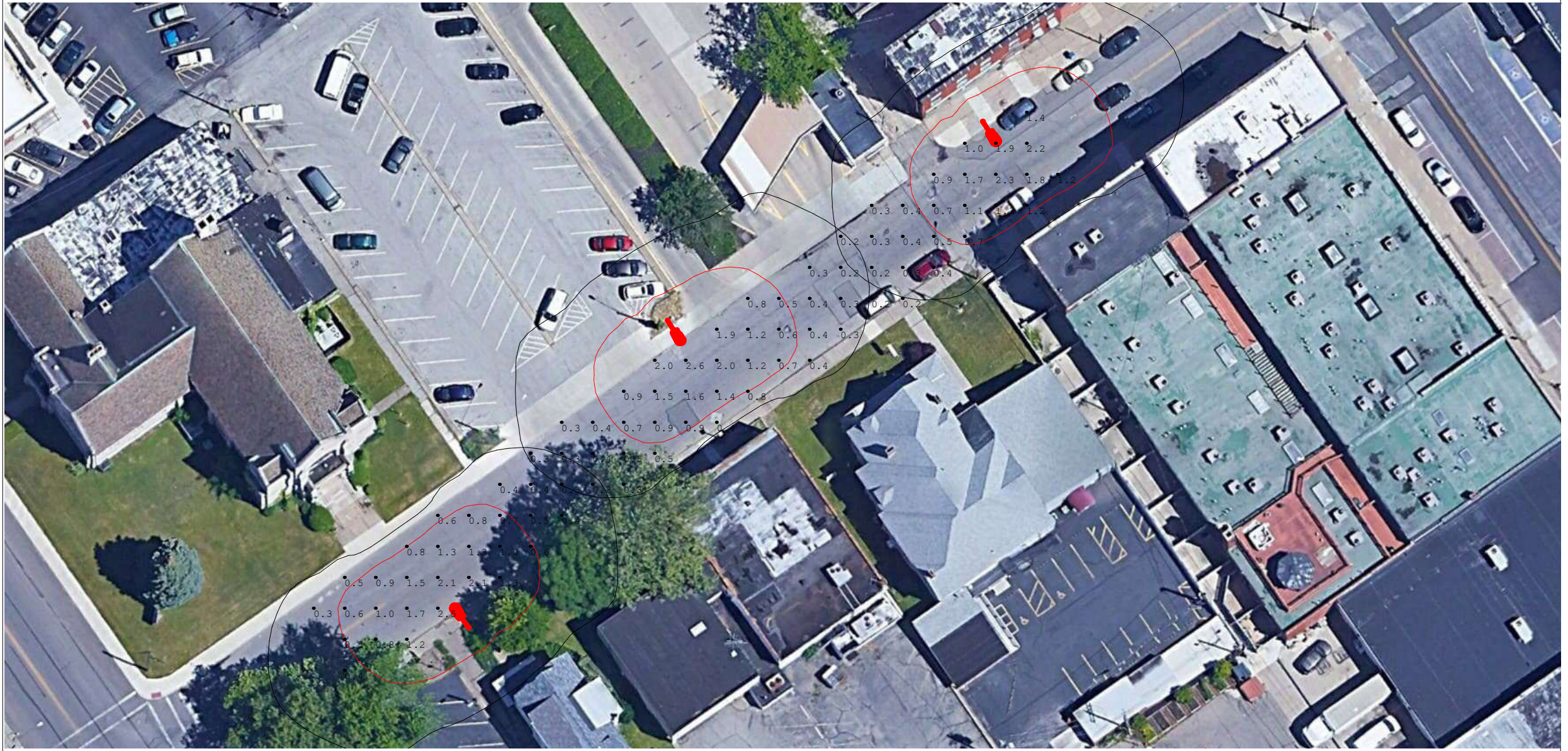
Downtown Infill Project



Lighting Plan Rev A

By: Mateo Chevalier
mateo.chevalier@fonroche.us
Date: 5/7/2026

2224 SE Loop 820, Building C
Fort Worth, TX 76140
Phone Number: (339) 225 4530
www.fonrochesolarlighting.com



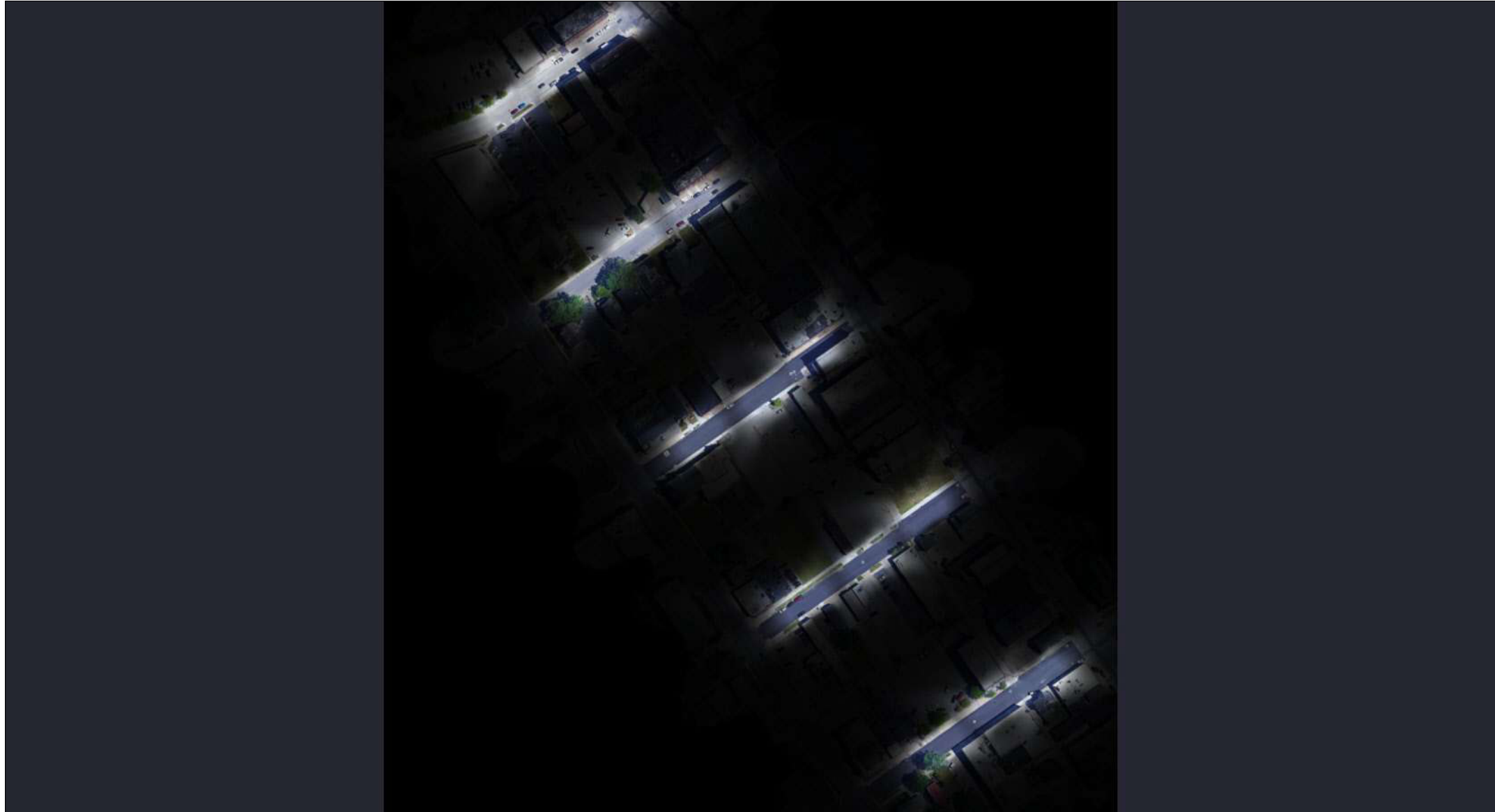
Downtown Infill Project



Lighting Plan Rev A

By: Mateo Chevalier
mateo.chevalier@fonroche.us
Date: 5/7/2026

2224 SE Loop 820, Building C
Fort Worth, TX 76140
Phone Number: (339) 225 4530
www.fonrochesolarlighting.com



Downtown Infill Project

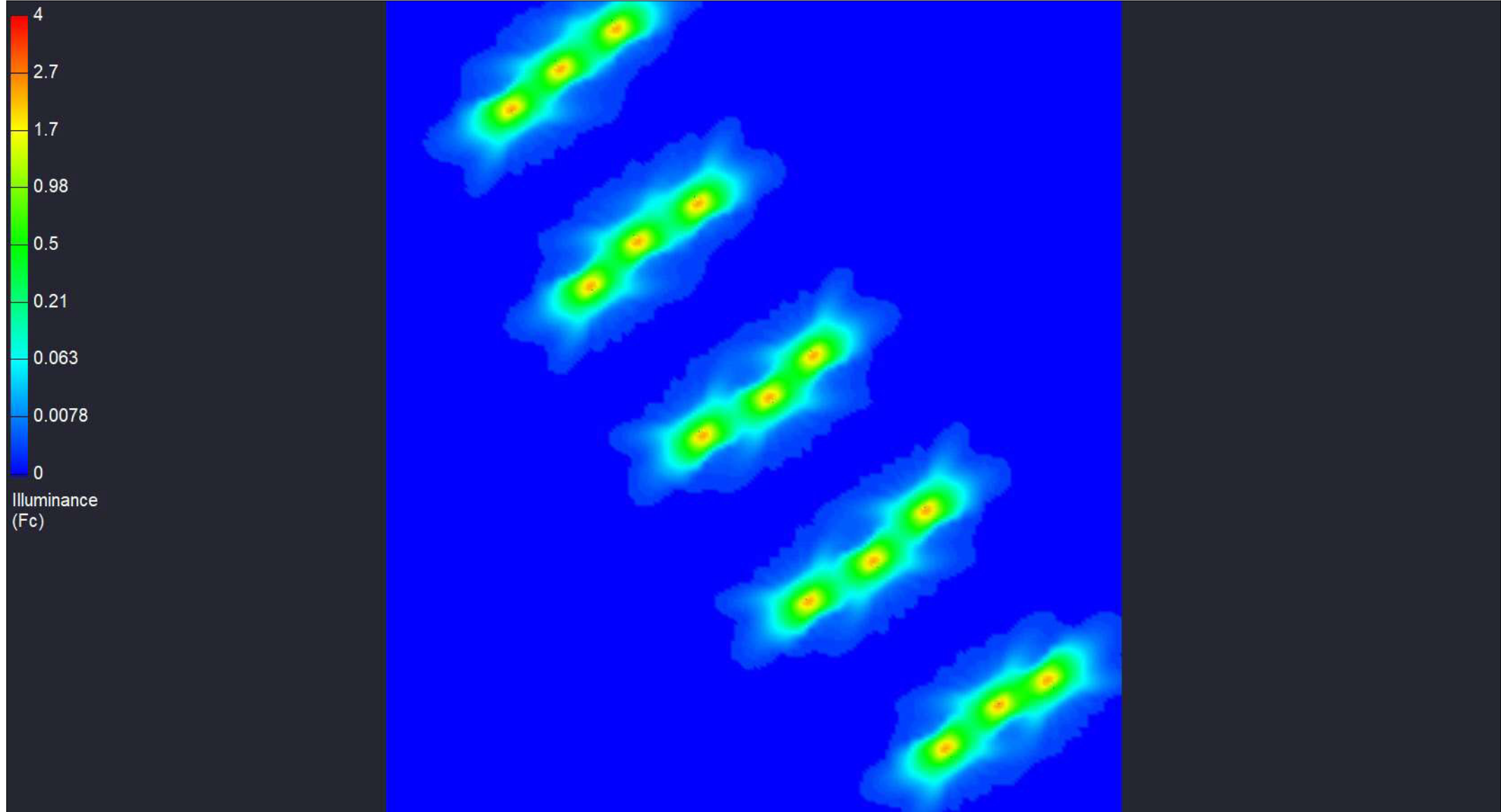
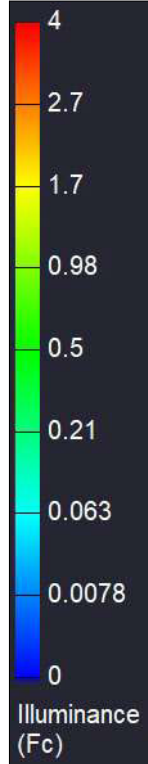


Lighting Plan Rev A

By: Mateo Chevalier
mateo.chevalier@fonroche.us
Date: 5/7/2026

2224 SE Loop 820, Building C
Fort Worth, TX 76140
Phone Number: (339) 225 4530
www.fonrochesolarlighting.com

Project Number: G11671



TECHNICAL SPECIFICATIONS

02

Study Process

For Lighting 365 Nights Per Year

[1] Site Meteorological Data ANALYSIS

For your lighting project we have taken into account:
 The conditions of use (orientation, panel tilt)
 External parameters (shading, temperature, solar calendar)

[3] SIZING to create a tailor-made project

- The key criteria to optimize your project:
- Average state of charge of the battery in the year
 - Minimum state of charge
 - Comparison of energy created / energy consumed
 - Worst case scenario (longest night; lowest solar radiation)

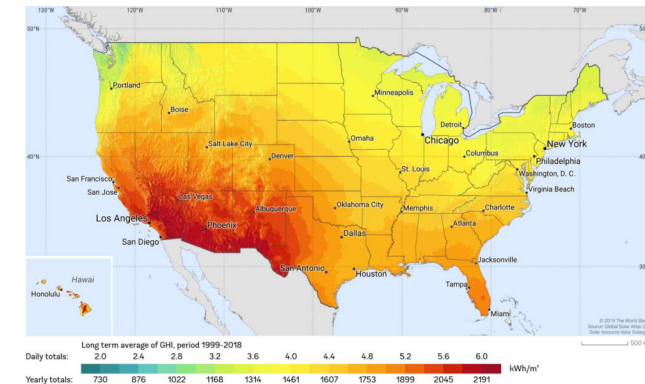
[2] SIMULATION of products over a typical year

Our solar sizing software has made it possible to validate the lighting equipment for your needs.
 The operation is simulated over a typical year, average of the last 10 years.

[4] RESULTS

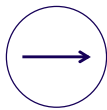
The solution we offer is the most optimized to fully fulfill lighting needs.

GPS Coordinates : 41.46500, -82.17636



Fonroche Connect

Remote management of your solar streetlights



Developed by our teams, Fonroche Connect is an intuitive remote communication tool that allows you to monitor and control your solar lighting network remotely. Thanks to advanced technology, you can geolocate your streetlights, access real-time diagnostics, and optimize their performance.

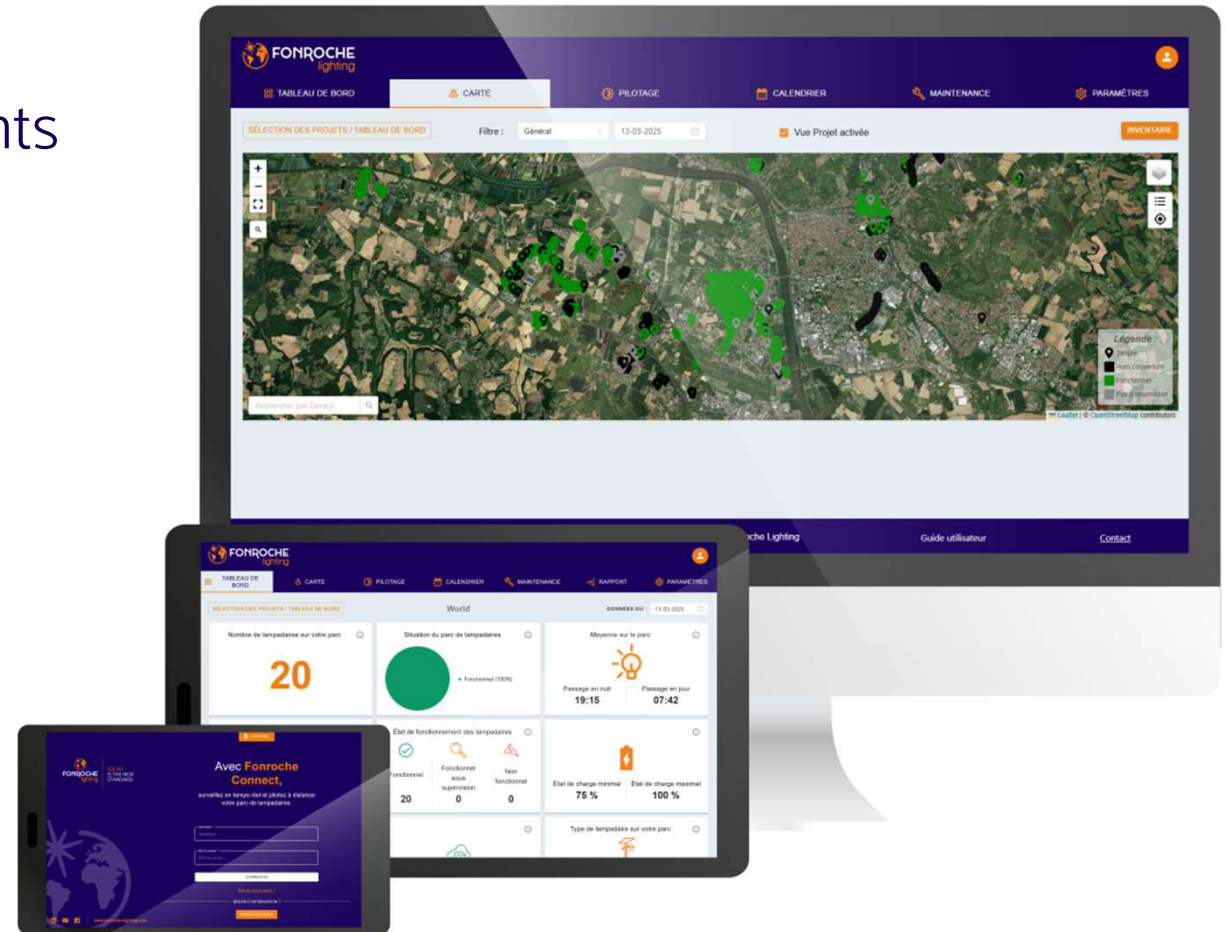
A gateway will be installed on one of the lampposts to collect and transmit data to the server.

Subject to the deployment of LoRa low-speed wireless radio communication and the availability of a 3G/4G network.





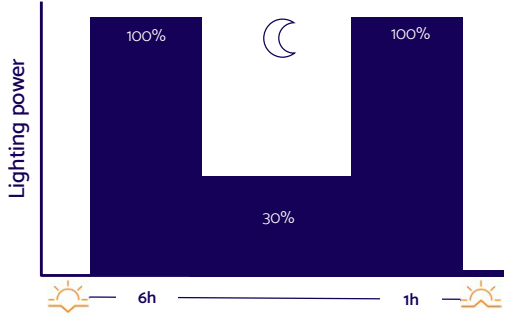
Gateway Configuration:



PV :	≥ 190 Wp
BATTERY :	≥ 936 Wh

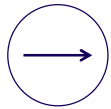


SMARTLIGHT Single – Quantity : 15

 <p>PHOTOVOLTAIC MODULE</p> <p>Power 310 Wp</p> <p>Tilt 45°</p>	 <p>BATTERY</p> <p>Capacity 936 Wh</p> <p>Nominal voltage 24 V</p>	 <p>LUMINAIRE</p> <p>LED Module T3 - 187 lm/W</p> <p>Color temp 3000 K</p>
 <p>STRUCTURE</p> <p>Mounting height 22'</p> <p>Arm length 4'</p> <p>Base type Direct Burial</p>	<p>LIGHTING PROFILE</p>  <p>The lighting profile shows a 6-hour period of 100% lighting power during daylight (indicated by a sun icon) and a 1-hour period of 100% lighting power during the night (indicated by a moon icon). The remaining 7 hours of the night have a lighting power of 30%.</p>	

INSTALLATION SERVICES

Customer support is an integral part of every Fonroche Lighting America project and does not end once an order is placed. As the World's largest infrastructure grade solar lighting manufacturer, we have the expertise and resources to deliver turn-key installation to our customers.



Turnkey Project Delivery

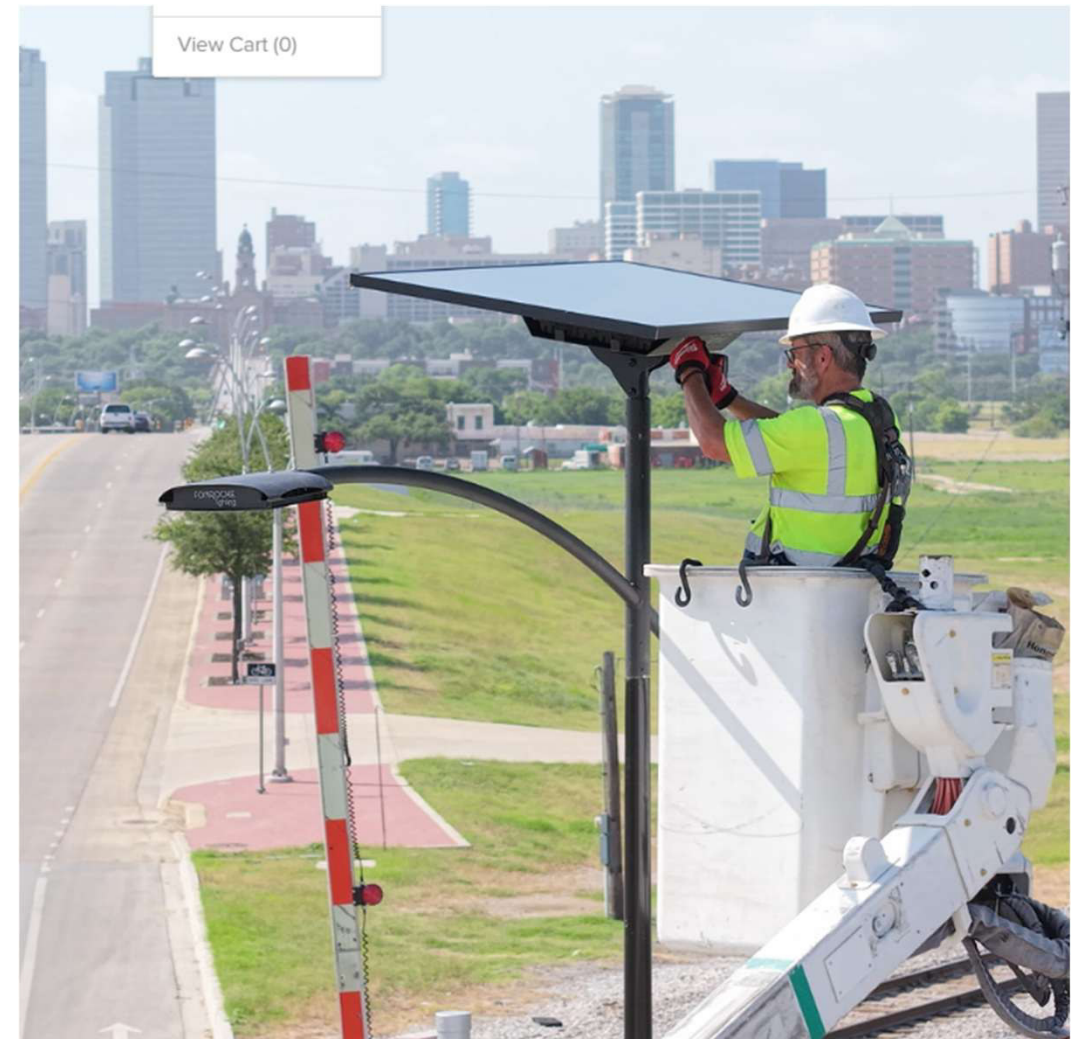
One stop shop to make your projects easy, smooth, and fast

Government Direct Purchasing and Installation Contracting

Utilize one of our many purchasing coops to direct purchase without RFP

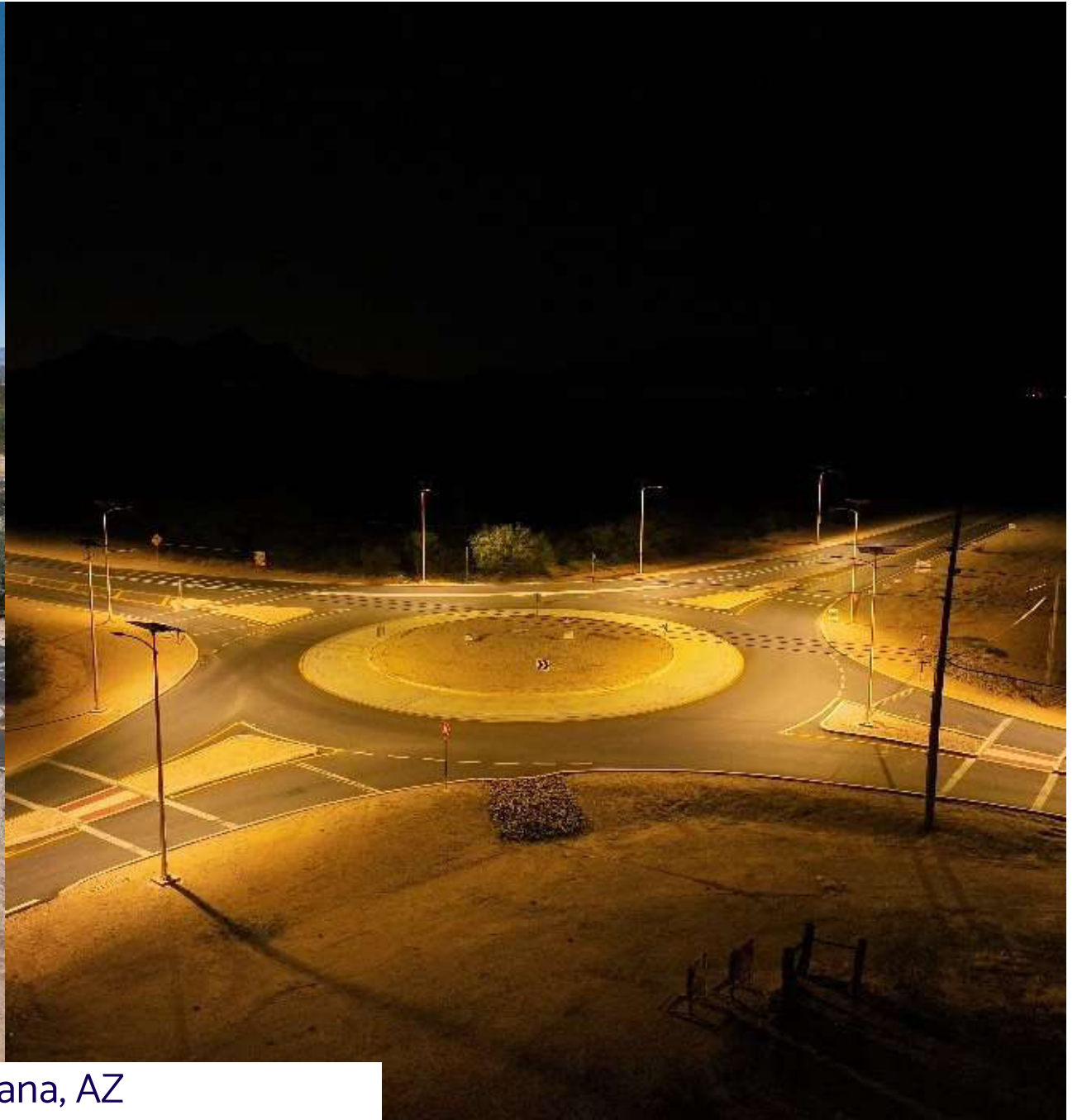
Single-Partner Accountability

One manufacturer, one system, one point of support—before, during, and after installation.



PROJECTS

03



Marana, AZ



Rowlett, TX



Summerville, SC



Bakersfield, CA



SOLAR
IS THE NEW
STANDARD

Prepared By: Mateo CHEVALIER

Sales Contact: Andrew Rowland – Andrew.rowland@fonroche.us

Phone : 339-225-4530

Sales@Fonroche.US

FONROCHE LIGHTING | 2224 SE Loop 820 Building C, Fort Worth, TX 76140

www.FonrocheSolarLighting.com