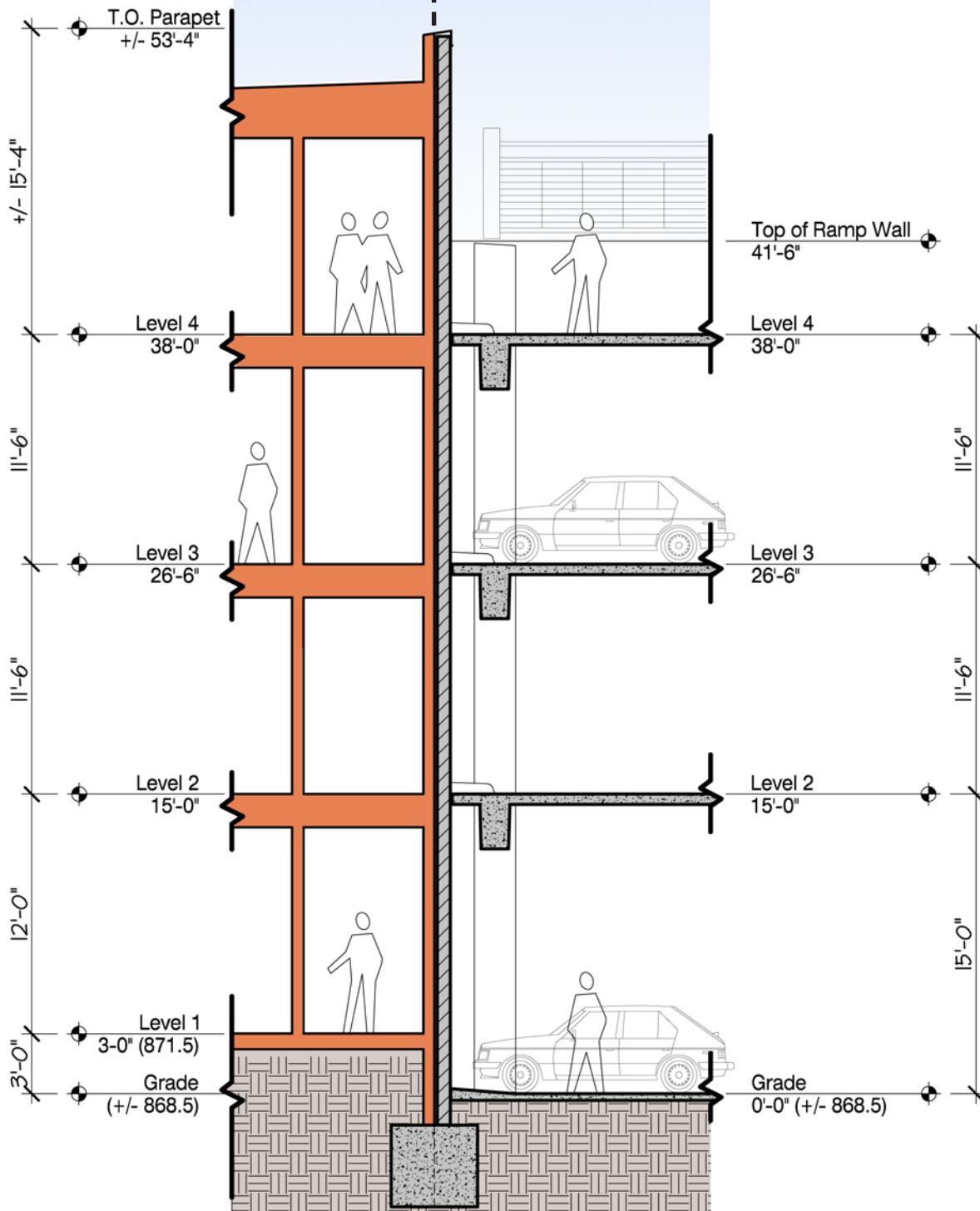


Proposed Residences at the COR | Proposed Ramp Addition



The exhibit above is to demonstrate the height relationship between the proposed apartment building and the parking ramp addition. It is not intended for construction detail and/or specifications. Elevations may change as design development progresses. Elevation figures for the ramp addition were ascertained from "Ramsey Municipal Parking Facility" construction document set dated 3.08.10.