

# **Feasibility Study For the 2011 Annual Street Maintenance Program**

**Prepared by**

**City of Ramsey  
Engineering Department  
January 2011**

## **Improvement Projects**

### **Sealcoat /Crackseal**

- 11-01 River's Bend 3rd & 4th
- 11-02 Riverside West
- 11-02 Ford Brook Estates
- 11-02 Section 06 & 07(Unplatted)
- 11-02 Section 16 (Welcomes Road)
- 11-02 Hall-Anderson Acres
- 11-02 Forest Hideaway
- 11-03 Oakridge Estates
- 11-03 Alpaca Estates
- 11-04 MSA – Xkimo St.

### **Bituminous Overlay**

- 11-05 157th Lane
- 11-06 Oak Run
- 11-06 Stanhope River Hills
- 11-06 Oakridge Estates

## **BACKGROUND**

Routine maintenance is the most economical method for safeguarding the public investment in bituminous paved streets. The bituminous street surface weakens as a result of sunlight exposure, precipitation, freeze/thaw cycles and traffic loading. As a result, the asphaltic components of the bituminous become brittle and susceptible to cracking. Once water is able to penetrate surface cracks into the road base, pavement deteriorates at an accelerating pace. To avoid this rapid deterioration, it is the goal of the City to address the preventative maintenance needs of its street system on a periodic basis.

The goal of sealcoating is to restore the imperviousness of the pavement. Eliminating water and pavement oxidation retains the flexibility of bituminous pavement. Sealcoating also adds skid resistance as a secondary benefit. Unlike sealcoats which only preserve the flexibility of the bituminous, an overlay provides additional strength to the pavement structure as well as a like new surface. Streets receive a bituminous overlay when they are no longer able to benefit from a sealcoating operation.

The construction and maintenance history of the pavements proposed for the 2011 Street Maintenance Program is presented in Appendix A. The 2011 program consists of six individual projects addressing the maintenance needs on 13.47 miles of City streets. Projects 11-01 through 11-04 will address 11.93 miles of City streets, and receive a sealcoat preceded by sealing of cracks having widths that exceed one-quarter inch (1/4"). Projects 11-05 and 11-06 will address 1.54 miles of City streets, and receive a one and one-half inch (1 1/2") bituminous overlay on top of the existing bituminous pavement. Pavement maintenance on Minnesota State Aid (MSA) streets is covered under project 11-04.

2011 sealcoating projects, 11-01 through 11-04, consist of streets that have been recently overlaid, a majority of which were done in 2006. These projects will be assessed under the City's new assessment policy for sealcoating, as explained in the financing section below.

2011 overlay projects, 11-05, through 11-08, consist of streets that have been aggregated by subdivision or similar lot sizes and will be assessed per unit. The pavement distress on these proposed projects indicate that additional pavement strength is needed.

All streets scheduled for maintenance are shown in Appendix C, the preliminary assessment role. This appendix contains a general mapping of each project and lists all the parcels receiving benefit; noting the number of shares being assessed. All streets proposed for the program have received a preliminary survey by the City Engineer and Public Works Supervisor. A post winter survey will be conducted prior to awarding bids in July. Appropriate project adjustments will be made if any of the scheduled projects are deemed to be inappropriate for sealcoating due to advanced deterioration.

## PROJECT QUANTITIES AND COSTS

Table 1 includes a listing of street lengths and pavement areas for each crackseal/sealcoat project. Estimates are also provided for crack filling material application rates. Table 2 contains the estimated construction costs for each of these sealcoat projects. Both the sealcoating and crack filling operation will be applied by a contractor selected through the competitive bidding process.

Bituminous overlay projects consist of applying a one and one-half inch (1 ½") bituminous overlay over the existing pavement. Tables 3 and 4 present summaries of the project quantities and construction costs, respectively. Prior to the overlay:

- Failing base and subgrade areas will be removed and patched by the City's Public Works Department. The number of tons required for street patching is estimated on an individual project basis. The rate charged for patching will be \$200 per ton of bituminous material which includes material and labor.
- Driveways will have the adjoining street milled to form a neat joint with the newly overlaid pavement.
- For streets without curbs, the edge of the overlay street will be shouldered to eliminate a significant drop off at the pavement edge formed by the increases thickness of the bituminous surface. Shouldering around corners, bends and intersection radii will be completed with class 2 shouldering aggregate. The major portion of shouldering on the remainder of the overlays will utilize topsoil which will be seeded, mulched and disc anchored.
- For streets with concrete curbing, the bituminous edge will be milled a distance of seven feet (7') from the bituminous-concrete interface. Doing so accommodates the new bituminous overlay being rolled flush with the existing curb surface.
- Deteriorated concrete curbing will be removed and replaced.
- Existing pavement will be swept, tack coated, and a machine laid one and one-half inch (1 ½") overlay will be placed by a contractor selected through the competitive bidding process.

## FINANCING

In addition to construction cost, overhead charges of twenty-five percent (25%) will be applied to cover the following services:

Engineering and Inspection	10%
City Staff Administration	5%
Bonding and Legal	2%
Contingencies	8%

The City's street maintenance assessment policy, as shown in Appendix B, charges property owners a fixed percentage of the actual total project cost of the improvements. Bituminous overlays are assessed at fifty percent (50%) of the total project costs. Sealcoat assessments were modified by the City Council in 2007 to phase out all resident project costs over a seven year period by reducing assessments by seven percent (7%) per year beginning in 2008 and ending in

2014 with no further sealcoat assessments. Since 1991 the percentage assessed for sealcoat projects was fifty percent (50%), and prior to that time they were assessed at one-hundred percent (100%). For the 2011 street maintenance program sealcoats will be assessed at a rate of twenty-two percent (22%) of the actual total project costs. Properties are proposed to be assessed equally on a per unit basis, regardless of front footage or property size, to provide uniformity when evaluating corner lots and cul-de-sac lots. Projects are generally grouped by subdivisions, which have similar characteristics and lot sizes, to create equitable apportionment of project costs.

Table 5 contains the distribution of costs by funding source; including the City, benefiting properties, MSA, and developer escrows. A listing of benefited properties is contained in the preliminary assessment role located in Appendix C. The costs contained within this report are estimated; each project will have a final tabulation made on actual project costs upon conclusion of the work consistent with the methodology described in this report. A public hearing will be held identifying the actual costs to be recovered by special assessment. Each property owner may chose to pay the entire amount of the assessment, without interest, within 30 days of the adoption of the assessment resolution. Any payment received after 30 days from the adoption of the assessment resolution, but before certification to the Anoka County Assessor, must be done in its entirety and will incur interest. Special assessments reported to Anoka County shall be payable over a three (3) year period for sealcoat projects and over a ten (10) year period for bituminous overlay projects, with interest at a rate of two percent (2%) above the U.S. Treasury rate at the time of the special assessment hearing.

### **PROJECTED PROJECT SCHEDULE**

A schedule for the milestones associated with the 2011 street maintenance program is presented in Table 6.

Table 1  
2011 Street Maintenance Program  
Crackfill / Sealcoat Quantities

Project	Description	Length Miles	Area Sq Yds	Crkfil Rate lbs/sq yd	Crkfil Mtrl Lbs	CRS-2 Mtrl Gallons	CRS-2p Mtrl Gallons	FA-2 Sy Yds	FA-2.5 Sy Yds	Stripping Cl Ft
11-01	River's Bend 3rd & 4th	0.16	4,623	0.15	693	627	529	4,623	-	-
11-02	Riverside West	0.48	8,355	0.15	1,253	2,089	-	8,355	-	-
11-02	Ford Brook Estates	1.25	18,280	0.15	2,742	4,394	176	18,280	-	-
11-02	Section 06 & 07(Unplatted)	3.45	51,429	0.15	7,714	12,152	705	51,429	-	-
11-02	Section 16 (Welcomes Road)	0.51	8,297	0.15	1,245	2,074	-	8,297	-	-
11-02	Hall-Anderson Acres	1.89	29,100	0.15	4,365	6,746	529	29,100	-	-
11-02	Forest Hideaway	0.6	11,694	0.15	1,754	2,747	176	11,694	-	-
11-02	Total	8.18	127,155		19,073	30,203	1,586	127,155	-	-
11-03	Oakridge Estates	2.15	41,135	0.15	6,170	9,755	529	41,135	-	-
11-03	Alpaca Estates 2nd & 3rd	1.15	18,283	0.15	2,742	4,042	529	18,283	-	-
11-03	Total	3.3	59,418		8,913	13,797	1,058	59,418	-	-
11-04	Xkimo St	0.29	6,794	0.20	1,359	-	2,989	-	6,794	1,531
	Totals	11.93	197,990		30,038	44,627	6,162	191,196	6,794	1,531

Table 2  
2011 Street Maintenance Program  
Estimated Crackfill / Sealcoat Costs

Crackseal Cost	CRS-2 Cost	CRS-2p Cost	FA-2 Cost	FA-2.5 Cost	Stripping Cost	Misc Crstr Cost	Total	
							Constr Cost	Cost
\$ 1,040	\$ 1,568	\$ 1,586	\$ 2,080	\$ -	\$ -	\$ 251	\$ 6,525	\$ 6,525
\$ 28,610	\$ 75,506	\$ 4,759	\$ 57,220	\$ -	\$ -	\$ 6,644	\$ 172,738	\$ 172,738
\$ 13,369	\$ 34,493	\$ 3,173	\$ 26,738	\$ -	\$ -	\$ 3,111	\$ 80,883	\$ 80,883
\$ 2,038	\$ -	\$ 8,968	\$ -	\$ 3,737	\$ 1,531	\$ 651	\$ 16,925	\$ 16,925
<b>Totals</b>	<b>\$ 45,057</b>	<b>\$ 111,566</b>	<b>\$ 86,038</b>	<b>\$ 3,737</b>	<b>\$ 1,531</b>	<b>\$ 10,657</b>	<b>\$ 277,072</b>	<b>\$ 277,072</b>

Table 3  
2011 Street Maintenance Program  
Bituminous Overlay Quantities

Project	Description	Length Mi	Area Sq Yds	Bitum. Tons	Tack Coat Gals	Milling Sq Yds	Shoulder CL Ft	Patching Tons
11-05	157th Lane	0.41	7,034	580	703	85		4.1
11-06	Oak Run	0.43	7,708	636	771	80		4.3
11-06	Stanhope River Hills	0.49	10,838	894	1,084	100		4.9
11-06	Oakridge Estates	0.21	4,560	376	456	35		2.1
11-06	<b>Total</b>	<b>1.13</b>	<b>23107</b>	<b>1906</b>	<b>2311</b>	<b>215</b>	<b>0</b>	<b>11.3</b>
		<b>1.54</b>	<b>30141</b>	<b>2487</b>	<b>3014</b>	<b>300</b>	<b>0</b>	<b>15.4</b>

Table 4  
2011 Street Maintenance Program  
Bituminous Overlay Costs

Project	Description	Bitum. Cost	Tack Coat Cost	Milling Cost	Shoulder Cost	Curb or Shoulder Cost	Striping Costs	Misc Const Cost	Contracted Construct Cost	City Patching Cost	Total Construction Cost
11-05	157th Lane	\$ 34,821	\$ 1,583	\$ 850	\$ 5,178	\$ 5,178	\$ -	\$ 849	\$ 43,280	\$ 820	\$ 44,100
11-06	See Table 3 for list	\$ 114,379	\$ 5,199	\$ 2,150	\$ 14,328	\$ 14,328	\$ -	\$ 2,721	\$ 138,776	\$ 2,260	\$ 141,036
	<b>Totals</b>	<b>\$ 149,199</b>	<b>\$ 6,782</b>	<b>\$ 3,000</b>	<b>\$ 19,505</b>	<b>\$ 19,505</b>	<b>\$ -</b>	<b>\$ 3,570</b>	<b>\$ 182,056</b>	<b>\$ 3,080</b>	<b>\$ 185,136</b>

**Table 5**  
**2011 Street Maintenance Program**  
**Financing of Project Costs**

Project Description	Total			City Cost	Assessed Cost	MSA or Developer Escrow	Units Assessed	Unit Assmnt
	Construction Cost	Overhead Cost	Project Cost					
<b>Sealcoats / Crackseal</b>								
11-01 River's Bend 3rd & 4th	\$ 6,525	\$ 1,631	\$ 8,156	\$ 6,362	\$ 1,794		27	\$ 66
11-02 See Table 1 for list	\$ 172,738	\$ 43,185	\$ 215,923	\$ 168,420	\$ 47,503		290	\$ 164
11-03 Oakridge Estates / Alpaca Estates	\$ 80,883	\$ 20,221	\$ 101,104	\$ 58,640	\$ 22,243	\$ 20,221	91	\$ 244
11-04 Xkimo St	\$ 16,925	\$ 4,231	\$ 21,156	\$ (3,112)	\$ 3,112	\$ 21,156	17	\$ 183
<b>Subtotal</b>	<b>\$ 277,071</b>	<b>\$ 69,268</b>	<b>\$ 346,339</b>	<b>\$ 230,310</b>	<b>\$ 74,652</b>	<b>\$ 41,377</b>	<b>425</b>	<b>\$ 176</b>
<b>Bituminous Overlays</b>								
11-05 157th Lane	\$ 44,100	\$ 11,025	\$ 55,125	\$ 27,563	\$ 27,563		17	\$ 1,621
11-06 See Table 3 for list	\$ 141,036	\$ 35,259	\$ 176,295	\$ 88,148	\$ 88,148		39	\$ 2,260
<b>Subtotal</b>	<b>\$ 185,136</b>	<b>\$ 46,284</b>	<b>\$ 231,420</b>	<b>\$ 115,710</b>	<b>\$ 115,710</b>		<b>56</b>	<b>\$ 2,066</b>
<b>Grand Total</b>	<b>\$ 462,207</b>	<b>\$ 115,552</b>	<b>\$ 577,759</b>	<b>\$ 346,020</b>	<b>\$ 190,362</b>	<b>\$ 41,377</b>		

**2011 Street Maintenance Program**  
**Revenue / Expenses**

Revenue / Expenses	
Revenues	Expenses
PIR \$ 14,000	\$ 346,830
MSA \$ 41,377	Seals \$ 231,420
City - Budget \$ 481,600	Assessed Overlays \$ 149,000
Assessments	Dirt Street Paving - Chameleon St. \$ 727,250
Overlays \$ 115,710	<b>Total</b>
Seals \$ 74,652	<b>\$ 727,339</b>
<b>Total</b>	

**Table 6**

**SCHEDULE FOR 2011 STREET MAINTENANCE PROGRAM**

<b>COUNCIL ACTION</b>	<b>STAFF ACTION</b>	<b>ACTION ITEM</b>	<b>EXECUTED</b>
	1/11	Prepare Feasibility Study and prepare preliminary assessment roll	
	2/15/11	Present Program to the Public Works Committee	
3/8/11		Resolution Receiving Report and Calling a Public Hearing	
	3/11/11 3/18/11	Publish Public Hearing Notice in Anoka Union	
	3/28/11	Mail Public Hearing Notice to Residents	
	3/30/11	Hold Citizen Informational Meeting	
4/12/11		Hold Public Hearing on Projects	
6/14/11		Authorize Projects and Order Plans and Specs.	
6/14/11		Set date for bids	
	6/17/11 6/24/11 7/1/11	Publish Advertisement for Bids in Anoka Union and Construction Bulletin	
	7/8/11	Open Bids	
7/12/11		Award Bids	
	7/11– 9/11	Perform Construction	
9/13/11		Resolution calling for Public Hearing on Assessment	
9/13/11		Resolution Declaring Cost to be Assesses and Ordering Assessment Roll	
	9/16/11 9/23/11	Publish Public Hearing Notice in Anoka Union	
	9/12/11	Mail Public Hearing Notice to Residents	
10/4/11		Hold Assessment Public Hearing	
10/4/11		Adopt Assessment Resolution	
	11/7/11	Certify Assessment Role to County (last date for interest free payment)	

**APPENDIX A**  
**2011 Street Maintenance Program Pavement History**  
**Sealcoats**

Proj No	Plot	Road	Description	Feet	Miles	Width	Area sq. ft.	Constr	SC 1	SC 2	OL
11-01	River's Bend 3rd	143rd Ave.	Xkimo St. / End CDS	400.9	0.08	26	10423	1993	2001		
11-01	Rivers Bend 4th	143rd Lane	Xkimo St. / CDS	220.7	0.04	26	5739	1995	2001		
11-01	Rivers Bend 4th	Xkimo Crt.	Xkimo St. / CDS	246.6	0.05	26	6412	1995	2001		
					<b>0.16</b>						
11-02	Riverside West	137th Ave.	Dolomite St. / W. EOP	750.2	0.14	30	22505	1992	1996	2003	
11-02	Riverside West	Dolomite St.	Rivendale Dr. / 137th Ave.	781.3	0.15	28	21877	1992	1996	2003	
11-02	Riverside West	Ebony St.	Rivendale Dr. / 137th Ave.	1,027.1	0.19	30	30812	2005			
					<b>0.48</b>						
11-02	Ford Brook Estates	180th Ave.	E. EOP / Erkiium St.	216.6	0.04	24	5199	1981	1987	1997	2006
11-02	Ford Brook Estates	180th Ave.	Erkiium St. / Erkiium St.	256.4	0.05	24	6153	1981	1987	1997	2006
11-02	Ford Brook Estates	180th Ave.	Erkiium St. / Fluorine St.	176.7	0.03	24	4240	1981	1987	1997	2006
11-02	Ford Brook Estates	180th Ave.	Fluorine St. / Germanium St.	434.7	0.08	24	10432	1981	1987	1997	2006
11-02	Ford Brook Estates	180th Ave.	Germanium St. / Iodine St.	462.1	0.09	24	11089	1981	1987	1997	2006
11-02	Ford Brook Estates	180th Lane	Erkiium St. / CDS	313.0	0.06	24	7512	1981	1987	1997	2006
11-02	Ford Brook Estates	Erkiium St.	179th Lane / 180th Ave.	697.8	0.13	24	16747	1981	1987	1997	2006
11-02	Ford Brook Estates	Erkiium St.	180th Ave. / 180th Lane	403.0	0.08	24	9672	1981	1987	1997	2006
11-02	Ford Brook Estates	Erkiium St.	180th Lane / N. EOP	201.2	0.04	24	4829	1981	1987	1997	2006
11-02	Ford Brook Estates	Fluorine St.	179th Lane / 180th Ave.	702.1	0.13	24	16850	1981	1987	1997	2006
11-02	Ford Brook Estates	Germanium St.	179th Lane / 180th Ave.	706.4	0.13	24	16953	1981	1987	1997	2006
11-02	Ford Brook Estates	Iodine St.	179th Lane / 180th Ave.	707.8	0.13	24	16987	1981	1987	1997	2006
11-02	Ford Brook Estates	Iodine St.	180th Ave. / T.H. 47	401.2	0.08	24	9629	1981	1987	1997	2006
11-02	Ford Brook Estates	Junkite St.	179th Lane / Iodine St.	911.6	0.17	24	21878	1981	1987	1997	2006
					<b>1.25</b>						
11-02	Section 06 (Unplatted)	173rd Ave.	Baugh St. / Driscoll St.	878.0	0.17	24	21072	1981	1987	1997	2006
11-02	Section 06 (Unplatted)	173rd Ave.	Driscoll St. / Termini	453.0	0.09	24	10872	1981	1987	1997	2006
11-02	Section 06 (Unplatted)	176th Ave.	Baugh St. / CDS	2,218.1	0.42	24	53235	1980	1986	1994	2006
11-02	Section 06 (Unplatted)	180th Ave.	Ermine St. / CDS	777.4	0.15	24	18657	1980	1986	1994	2006
11-02	Section 06 (Unplatted)	Driscoll St.	176th Ave. / 173rd Ave.	1,750.9	0.33	24	42021	1981	1987	1997	2006
11-02	Section 06 (Unplatted)	Eaton St.	Ermine St. / 176th Ave.	1,877.5	0.36	24	45059	1980	1986	1994	2006

Proj No	Plat	Road	Description	Feet	Miles	Width	sq. ft.	Constr	SC 1	SC 2	OL
11-02	Section 06 (Unplatted)	Ermine Blvd.	City Limits / Baugh St.	3,829.9	0.73	24	91917	1980	1986	1994	2006
11-02	Section 06 (Unplatted)	Halas St.	Ermine St. / CDS	631.6	0.12	24	15157	1980	1986	1994	2006
11-02	Section 07 (Unplatted)	169th Lane	Baugh St. / CDS	1,280.0	0.24	24	30720	1981	1987	1997	2006
11-02	Section 07 (Unplatted)	Baugh St.	173rd Ave. / 169th Lane	2,266.0	0.43	24	54384	1981	1987	1997	2006
11-02	Section 07 (Unplatted)	Driscoll St.	173rd Ave. / 169th Lane	2,266.0	0.43	24	54384	1981	1987	1997	2006
					<b>3.45</b>						
11-02	Section 16 (Welcomes Road)	163rd Lane	Variolite St. / Uranimite St.	268	0.05	28	7504	2006			
11-02	Section 16 (Welcomes Road)	164th Ave.	Saphire St. / Pt 285ft E	285	0.05	28	7980	2006			
11-02	Section 16 (Welcomes Road)	164th Lane	Uranimite St. / Saphire St.	638	0.12	28	17870	2006			
11-02	Section 16 (Welcomes Road)	Saphire St.	164th Lane / 164th Ave.	621	0.12	28	17384	2006			
11-02	Section 16 (Welcomes Road)	Uranimite St.	163rd Lane / 164th Lane	855	0.16	28	23938	2006			
					<b>0.51</b>						
11-02	Hall-Anderson Acres	159th Lane	Sodium St. / CDS	2,092.0	0.40	24	50208	1980	1986	1996	2006
11-02	Hall-Anderson Acres	160th Lane	W. EOP / T.H. 47	3,029.8	0.57	24	72716	1980	1986	1996	2006
11-02	Hall-Anderson Acres	Neon St.	160th Lane / CDS	274.7	0.05	24	6594	1980	1986	1996	2006
11-02	Hall-Anderson Acres	Osmium St.	159th Lane / 160th Lane	1,118.6	0.21	24	26845	1980	1986	1996	2006
11-02	Hall-Anderson Acres	Potassium St.	159th Lane / Osium St.	734.6	0.14	24	17630	1980	1986	1996	2006
11-02	Hall-Anderson Acres	Radium St.	159th Lane / 160th Lane	887.3	0.17	24	21296	1980	1986	1996	2006
11-02	Hall-Anderson Acres	Sodium St.	S. EOP / 160th Lane	1,104.9	0.21	24	26517	1980	1986	1996	2006
11-02	Hall-Anderson Acres	TH 47 Service Ro	S EOP / N EOP	752.0	0.14	28	21056	2006			
					<b>1.89</b>						
11-02	Forest Hideaway	159th Lane	159th Lane / CDS	432.7	0.08	31	13414	1977	1983	1991	2006
11-02	Forest Hideaway	159th Lane	160th Ave. / P.C. Iguana St.	842.6	0.16	31	26120	1977	1983	1991	2006
11-02	Forest Hideaway	160th Ave.	W. EOP / Kangaroo St.	393.0	0.07	31	12183	1977	1983	1991	2006
11-02	Forest Hideaway	Iguana St.	161st Ave. / P.C. 159th Lane	726.3	0.14	31	22515	1977	1983	1991	2006
11-02	Forest Hideaway	Kangaroo St.	161st Ave. / 160th Ave.	795.8	0.15	31	24669	1977	1983	1991	2006
					<b>0.60</b>						
11-03	Oakridge Estates	163rd Ave.	Llama St. / Ferret St.	2,360.9	0.45	31	73189	1979	1985	1993	2006
11-03	Oakridge Estates	Ferret St.	E.P.C. Hedgehog St. & Ferret St. / 161st Ave.	1,860.6	0.35	31	57677	1979	1985	1993	2006
11-03	Oakridge Estates	Hedgehog St.	163rd / E.P.C. Ferret St. & Hedgehog St.	1,347.7	0.26	31	41780	1979	1985	1993	2006
11-03	Oakridge Estates	Kangaroo Cir.	Armstrong Blvd. / CDS	182.5	0.03	31	5657	1979	1985	1993	2006
11-03	Oakridge Estates	Kangaroo St.	163rd Ave. / CDS	279.6	0.05	31	8667	1979	1985	1993	2006
11-03	Oakridge Estates	Kangaroo St.	C.R. 83 / CDS	535.6	0.10	31	16604	1979	1985	1993	2006

Proj No	Plat	Road	Description	Feet	Miles	Width	sq. ft.	Constr	SC 1	SC 2	OL
11-03	Section 17 (Unplatted)	161st Ave.	C.R. 83 / Termini	3,431.5	0.65	31	106376	1979	1996		2006
11-03	Section 17 (Unplatted)	Llama St.	163rd Ave. / 161st Ave.	1,330.0	0.25	31	41230	1979	1993		2006
					<b>2.15</b>						
11-03	Alpaca Estates 2nd	142nd Ave.	E. EOP / Alpaca St.	518	0.10	24	12428	1981	1987	1997	2006
11-03	Alpaca Estates 2nd	142nd Ave.	Alpaca St. / W. EOP	1,118	0.21	24	26842	1981	1987	1997	2006
11-03	Alpaca Estates 2nd	Alpaca St.	142nd Ave. / N. EOP	932.5	0.18	24	22380	1981	1987	1997	2006
11-03	Alpaca Estates 3rd	142nd Ave.	Armstrong Blvd. / E. EOP	141	0.03	24	3386	1986	1994		2006
11-03	Alpaca Estates 3rd	142nd Ave.	W. EOP / Armstrong Blvd.	974	0.18	24	23372	1986	1994		2006
11-03	Alpaca Estates 3rd	144th Ave.	W. EOP / Armstrong Blvd.	1,006.5	0.19	24	24156	1986	1994		2006
11-03	Alpaca Estates 3rd	Armstrong Blvd.	142nd Ave. / 144th Ave.	1,035	0.20	24	24833	1986	1994		2006
11-03	Alpaca Estates 3rd	Armstrong Blvd.	144th Ave. / N. EOP	338	0.06	24	8111	1986	1994		2006
					<b>1.15</b>						
11-04	River's Bend 3rd	Xkimo St.	142nd Ave. / 143rd Ave.	684	0.13	40	27368	1993	2001		
11-04	Rivers Bend 4th	Xkimo St.	Xkimo Ct. / TH 47	211	0.04	42	8877	2000			
11-04	Rivers Bend 4th	Xkimo St.	143rd Ave. / Xkimo Ct.	623	0.12	40	24901	1995	2001		
					<b>0.29</b>						
11-05	Section 15 (Unplatted)	157th Lane	Ramsey Blvd./CDS	2,191.0	<b>0.41</b>	26	56965	1982	1997		
11-06	Oak Run	Coquina St.	Nowthen Blvd. / N. EOP	2,001.1	0.38	28	56030	1990	1996	2004	
11-06	Oak Run*	Coquina St.	Coquina St. / CDS	250.0	0.05	28	7000	1990	1996	2004	
					<b>0.43</b>						
11-06	Stanhope River Hills	153rd Lane	Roanoke St. / Oneida St.	660.0	0.13	28	18480	1987	1993	2002	
11-06	Stanhope River Hills	154th Lane	Roanoke St. / CDS	540.0	0.10	28	15120	1987	1993	2002	
11-06	Stanhope River Hills	155th Lane	Roanoke St. / CDS	540.0	0.10	28	15120	1987	1993	2002	
11-06	Stanhope River Hills	Juniper Circle	Roanoke St. / CDS	507.7	0.10	28	14215	1987	1993	2002	
11-06	Stanhope River Hills	Oneida St.	S. EOP / 153rd Lane	329.7	0.06	28	9231	1987	1993	2002	
					<b>0.49</b>						
11-06	Oakridge Estates	166th Cir.	Marmoset St. / CDS	517.3	0.10	31	16035	1979	1985	1993	
11-06	Oakridge Estates	Marmoset St.	Armstrong Blvd. / S. EOP	601.9	0.11	31	18660	1979	1985	1993	
					<b>0.21</b>						

## APPENDIX B

### Street Maintenance Program Assessment Practices

1. Projects are identified by individual subdivision, or by grouping of subdivision and lots having similar pavement histories and conditions and similar pavement areas per benefited unit.
2. An assessment share will be calculated by determining the total assessable cost of the project and dividing by the number of benefited units.
3. Where an individual lot has more than one frontage and not all frontages are scheduled to receive an improvement or the same type of improvements, the lot will be considered benefited and be assessed a full share for the improvement which is conducted along the frontage of the lot that contains the main driveway opening.
4. For overlays the amount assessed to benefited property owner is 50% of the total project cost including overhead costs. (1991).
5. For sealcoats the assessment to benefited property owner shall be 43% of the total project cost including overhead costs in program year 2008, and shall be reduced by 7% in each successive year until reduced to an 8% assessment in program year 2013. After the 2013 program there shall be no assessment for sealcoats. (2007).
6. Projects involving streets which have had previous proposed maintenance projects defeated by petition shall be ineligible to receive the City's 50% contribution, if the project requires a more expensive maintenance. (i.e. streets proposed for sealcoating project which was defeated by citizen petition now are proposed for a bituminous overlay) (1993)
7. Where the rule of dividing the assessable project cost by the number of benefited units (no. 2 above) would result in an assessable share which is grossly out of proportions to the assessable share being charged to similar lots receiving similar improvements, the City Council may elect to assess such lots the average assessable share being made to lots receiving similar improvements for that project year. (1996)
8. Where a benefited area contains commercial lots having widely varying sizes, the assessment shall be made based on area of the lot. (2003)
9. Where an individual lot has more than one frontage including a driveway frontage on a state or county road, and a non-driveway frontage on a MSA or city street, one-half assessment share will be made for an improvement to the MSA or City street (1995)

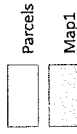
10. Where an individual lot has a single frontage on an MSA street, such lots will be assessed the average assessable share for the type of improvement made to non MSA streets receiving that improvement. (1992)
11. Whenever possible townhouse units shall be aggregated into individual projects having a single land use. In instances where townhouse units must be combined in the same project with single family units, it shall be the policy to assess the townhouse units a number of assessment units equal to the frontage of the townhouse units along the improved street(s) divided by the average frontage of the single family units. (2004)

## **Appendix C**

### **Preliminary Assessment Roll**



**Map 1**  
**Rivers Bend 3rd & 4th**  
**IP 11-01**



0 62.5 125 Feet

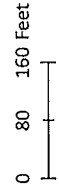
The map has been compiled using information gathered from a variety of sources, including aerial photography, ground surveys, and other available information. The City does not warrant the accuracy of the information shown on this map. The City does not represent that the GIS data can be used for exact measurement or distance. A 2-foot tolerance is allowed for the location of any point on the map. The City of Ramsey disclaims any responsibility for the accuracy of the information shown on this map. The City of Ramsey disclaims any responsibility for the accuracy of the information shown on this map. The City of Ramsey disclaims any responsibility for the accuracy of the information shown on this map. The City of Ramsey disclaims any responsibility for the accuracy of the information shown on this map.



<u>ANOKA COUNTY PID</u>	<u>PROPERTY ADDRESS</u>	<u>STATE</u>	<u>ZIP</u>	<u>CITY</u>	<u>PROPERTY OWNER</u>	<u>SHARE</u>	<u>EST. ASSESSMENT</u>
253225420036	5001 143RD AVE NW	MN	55303-5657	RAMSEY	SUTHERLAND TAMMY	1 \$	66.00
253225420056	5080 143RD LN NW	MN	55303-5697	RAMSEY	OLSON MICHELLE L	1 \$	66.00
253225430048	5091 143RD AVE NW	MN	55303-5657	RAMSEY	ARRELLANO SALVADOR	1 \$	66.00
253225420053	5020 143RD LN NW	MN	55303-5697	RAMSEY	WELLER TODD & MARGARET	1 \$	66.00
253225430051	5030 143RD AVE NW	MN	55303-5658	RAMSEY	LEVKOVICH KANG	1 \$	66.00
253225420042	5041 XKIMO CT NW	MN	55303-5696	RAMSEY	BLAKLEY TED C & MEGAN C	1 \$	66.00
253225420052	5000 143RD LN NW	MN	55303-5697	RAMSEY	WILKEN PAUL	1 \$	66.00
253225420039	4970 143RD AVE NW	MN	55303-5656	RAMSEY	THAO LUE	1 \$	66.00
253225420050	5041 143RD LN NW	MN	55303-5697	RAMSEY	BRATULICH THEODORE	1 \$	66.00
253225420046	5060 XKIMO CT NW	MN	55303-5696	RAMSEY	MIKESSELL DAVID	1 \$	66.00
253225420049	5061 143RD LN NW	MN	55303-5697	RAMSEY	FURNESS CHRISTOPHER	1 \$	66.00
253225420055	5060 143RD LN NW	MN	55303-5697	RAMSEY	AESHLIMAN JASON T & REBECCA J	1 \$	66.00
253225430052	5060 143RD AVE NW	MN	55303-5658	RAMSEY	GERLACH STEVEN	1 \$	66.00
253225420037	4981 143RD AVE NW	MN	55303-5656	RAMSEY	MINGO EDWARD A & JOAN F	1 \$	66.00
253225430049	4980 143RD AVE NW	MN	55303-5656	RAMSEY	NUMFOR ERASMOS	1 \$	66.00
253225420038	4971 143RD AVE NW	MN	55303-5656	RAMSEY	BRANDANGER JM	1 \$	66.00
253225420054	5040 143RD LN NW	MN	55303-5697	RAMSEY	PURINTON AMY	1 \$	66.00
253225310006		MN	55303	RAMSEY	RIVERS BEND HOLDINGS LLC	1 \$	66.00
253225420035	5031 143RD AVE NW	MN	55303-5657	RAMSEY	BARAN TOMASZ	1 \$	66.00
253225420034	5061 143RD AVE NW	MN	55303-5657	RAMSEY	HURNER JOSEPHINE	1 \$	66.00
253225420044	5020 XKIMO CT NW	MN	55303-5696	RAMSEY	HUGHES LONNIE	1 \$	66.00
253225420043	5021 XKIMO CT NW	MN	55303-5696	RAMSEY	BAILEY II RICHARD & BAILEY JODI	1 \$	66.00
253225430050	5000 143RD AVE NW	MN	55303-5658	RAMSEY	PRICE TRACY L	1 \$	66.00
253225420048	5081 143RD LN NW	MN	55303-5697	RAMSEY	YANTES NICOLE	1 \$	66.00
253225420045	5040 XKIMO CT NW	MN	55303-5696	RAMSEY	JENSEN ALFRED D & CAROL M	1 \$	66.00
253225420051	5021 143RD LN NW	MN	55303-5697	RAMSEY	ASAMOAH AGARTHA	1 \$	66.00
253225420047	5080 XKIMO CT NW	MN	55303-5696	RAMSEY	FOX ANDREW T	1 \$	66.00
					<b>TOTAL</b>	<b>27 \$</b>	<b>1,782.00</b>



**Map 2**  
**Riverside West**  
**IP 11-02**



The map has been compiled using information gathered from various sources and is intended to be used for reference purposes only. It is not a legally recorded map nor a survey and is not intended for use as one. The Geographic Information System (GIS) data used to develop this map is not warranted by the City as being error-free.

The City does not represent that the GIS data is used for the purposes of legal proceedings. For more information, please contact 651.224.4272-1423.

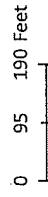
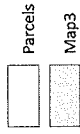
The City of Ramsey disclaims any responsibility for the accuracy of the information. It and its points of land are not a 0.5 to 1.0 inch in the public's general interest. The parcel is used as a 1.0 inch map. The City of Ramsey's disclaimer from any and all claims brought by third parties, employees or agents, or third



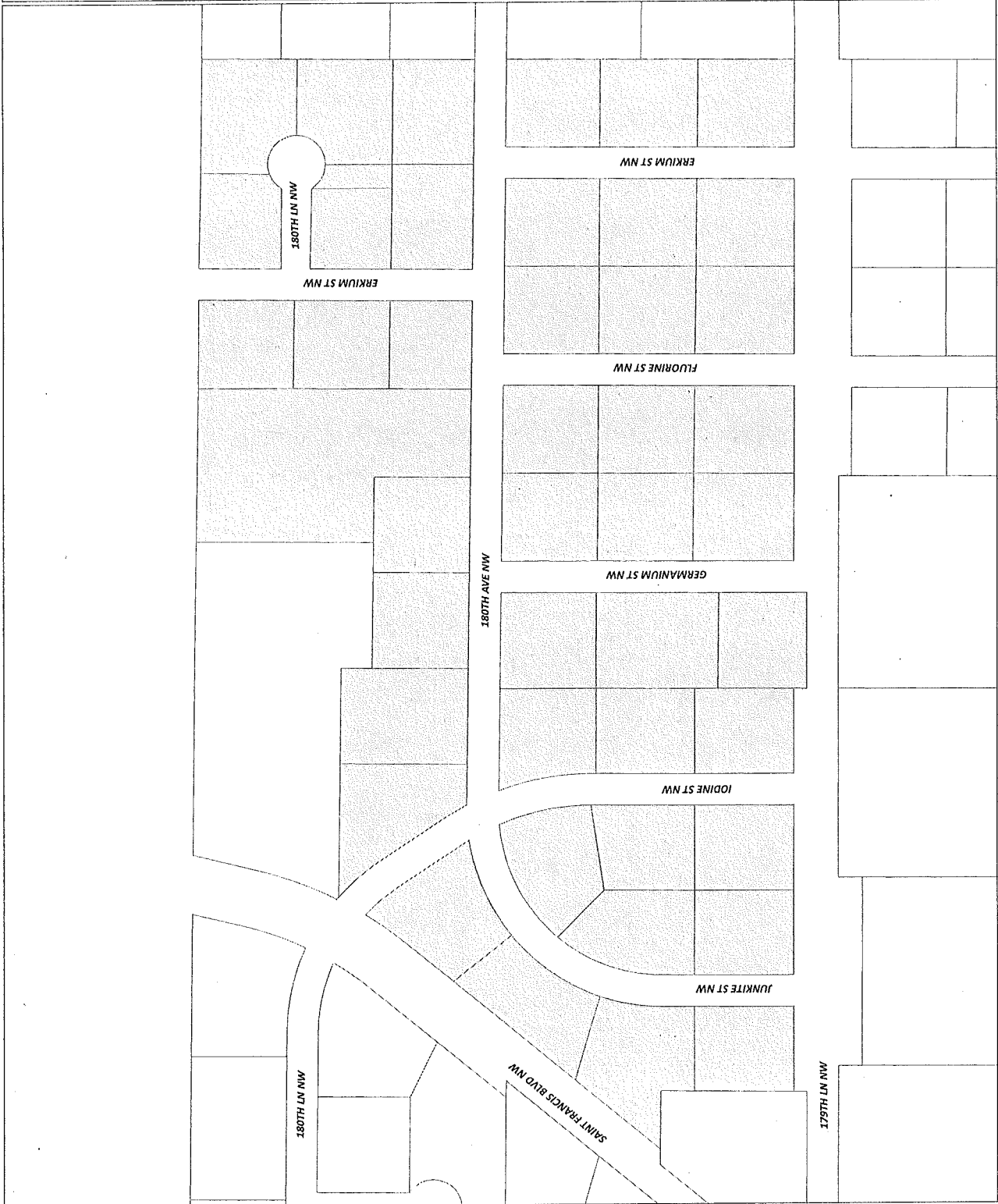
<u>ANOKA COUNTY PID</u>	<u>PROPERTY ADDRESS</u>	<u>STATE</u>	<u>ZIP</u>	<u>CITY</u>	<u>PROPERTY OWNER</u>	<u>SHARE</u>	<u>EST. ASSESSMENT</u>
343225130024	13741 DOLOMITE ST NW	MN	55303-4564	RAMSEY	LINDAHL SCOTT	1	\$ 164.00
343225130011	6801 137TH AVE NW	MN	55303-4519	RAMSEY	HEVERN GARY W & RENEE M	1	\$ 164.00
343225130028	6710 RIVERDALE DR NW	MN	55303-4509	RAMSEY	ANDERSON COMPANIES LLP	1	\$ 164.00
343225130009		MN	55303	RAMSEY	TWO S PROPERTIES INC	1	\$ 164.00
343225130023	6711 137TH AVE NW	MN	55303-4573	RAMSEY	BISEK MICHAEL J	1	\$ 164.00
343225130038	13715 EBONY ST NW	MN	55303	RAMSEY	ORLIOGLO NATALIA	1	\$ 164.00
343225130026	13721 DOLOMITE ST NW	MN	55303-4564	RAMSEY	LARSEN TAMARA L M & ROBERT C	1	\$ 164.00
343225130030	13740 DOLOMITE ST NW	MN	55303-4564	RAMSEY	JACOBS DANIEL R & LISA M	1	\$ 164.00
343225130022	13718 DOLOMITE ST NW	MN	55303	RAMSEY	HILLYARD WILLIAM J & KRYSZYNA	1	\$ 164.00
343225130010	13720 EBONY ST NW	MN	55303-4556	RAMSEY	KUZKO ALEXANDER	1	\$ 164.00
343225130031	13730 DOLOMITE ST NW	MN	55303-4564	RAMSEY	KOLLES SHAWN & JENA	1	\$ 164.00
343225130007	6800 RIVERDALE DR NW	MN	55303-4593	RAMSEY	TWO S PROPERTIES INC	1	\$ 164.00
343225420003	13659 DOLOMITE ST NW	MN	55303-4513	RAMSEY	BLAKEMORE STEVEN M	1	\$ 164.00
343225420008	6660 137TH AVE NW	MN	55303-4822	RAMSEY	SIRENO NORA	1	\$ 164.00
343225420010	6774 137TH AVE NW	MN	55303-4518	RAMSEY	KESLER LEROY L & JOANNE M	1	\$ 164.00
343225420009	6802 137TH AVE NW	MN	55303-6064	RAMSEY	STRUTHERS GARY L & SUE E	1	\$ 164.00
343225130008		MN	55303	RAMSEY	SSCI MINNESOTA CORPORATION	1	\$ 164.00
343225420005	6746 137TH AVE NW	MN	55303-4518	RAMSEY	KUCKLER CARRIE	1	\$ 164.00
343225130035		MN	55303	RAMSEY	ANDERSON COMPANIES LLP	1	\$ 164.00
343225130027	13711 DOLOMITE ST NW	MN	55303-4564	RAMSEY	HILLYARD WILLIAM J & KRYSZYNA	1	\$ 164.00
343225420006	6726 137TH AVE NW	MN	55303-4518	RAMSEY	WOLENS RICHARD F & RUBY L	1	\$ 164.00
343225130025	13731 DOLOMITE ST NW	MN	55303-4564	RAMSEY	HAUCK CLARA	1	\$ 164.00
343225130019	13751 DOLOMITE ST NW	MN	55303-4564	RAMSEY	ANOKA-RAMSEY CONG OF JEHOVAH'S WITNESSES	1	\$ 164.00
343225130041	13739 EBONY ST NW	MN	55303	RAMSEY	HOLM TIM	1	\$ 164.00
343225130040	13729 EBONY ST NW	MN	55303	RAMSEY	HOLM TIM	1	\$ 164.00
343225420007		MN	55303	RAMSEY	STATE OF MINNESOTA	0	\$ -
343225130039	13725 EBONY ST NW	MN	55303	RAMSEY	SMITH VIVIAN	1	\$ 164.00
343225130033	6731 137TH AVE NW	MN	55303-4573	RAMSEY	MARK BOYUM	1	\$ 164.00
343225130037	6741 137TH AVE NW	MN	55303-4573	RAMSEY	DENISE NUTTER	1	\$ 164.00
					<b>TOTAL</b>	<b>28</b>	<b>\$ 4,592.00</b>



**Map 3**  
**Ford Brook Estates**  
**IP 11-02**



This map has been compiled using information derived from various government and other public sources. The City does not warrant the accuracy of the information shown on this map and is not intended for use as such. The Geographic Information System (GIS) data used to create this map was last updated in 2013. The City does not represent that the GIS data can be used for exact measurement of distance or direction, or that the City of Ramsey is liable for any errors or omissions in the data. For more information, please contact the City of Ramsey at 477-1432.



<u>ANOKA COUNTY PID</u>	<u>PROPERTY ADDRESS</u>	<u>STATE</u>	<u>ZIP</u>	<u>CITY</u>	<u>PROPERTY OWNER</u>	<u>SHARE</u>	<u>EST. ASSESSMENT</u>
023225110016	5605 180TH AVE NW	MIN	55303-3329	RAMSEY	ANDERSON KRISTINA	1	\$ 164.00
023225110025	17957 IODINE ST NW	MIN	55303-3320	RAMSEY	WILSON ANGELA	1	\$ 164.00
013225220026	5418 180TH LN NW	MIN	55303-3366	RAMSEY	BANK OF AMERICA N A TRUSTEE	1	\$ 164.00
023225110015	17916 JUNKITE ST NW	MIN	55303-3359	RAMSEY	WILLIAMS MICHAEL L	1	\$ 164.00
013225220017	17957 FLUORINE ST NW	MIN	55303-3322	RAMSEY	FRAGALE KATHLEEN	1	\$ 164.00
013225220007	17938 FLUORINE ST NW	MIN	55303-3364	RAMSEY	DRAKE THOEDORE A & J E	1	\$ 164.00
013225220013	17938 ERKIUM ST NW	MIN	55303-3365	RAMSEY	CARPENTIER SCOTT & MELANIE	1	\$ 164.00
023225110014	17936 JUNKITE ST NW	MIN	55303-3359	RAMSEY	JAMES PAUL A	1	\$ 164.00
013225220002	5531 180TH AVE NW	MIN	55303-3367	RAMSEY	CHREST JOY	1	\$ 164.00
023225110017	5621 180TH AVE NW	MIN	55303-3329	RAMSEY	OLBERG EUGENE A	1	\$ 164.00
013225220031		MIN	55303	RAMSEY	RAMSEY CITY OF	1	\$ 164.00
013225220025	5419 180TH LN NW	MIN	55303-3366	RAMSEY	BAUER GREGORY	1	\$ 164.00
013225220009	17917 GERMANIUM ST NW	MIN	55303-3321	RAMSEY	JOHNSON BRANDON	1	\$ 164.00
013225220014	17918 ERKIUM ST NW	MIN	55303-3365	RAMSEY	PATTERSON JONAS & SANDY	1	\$ 164.00
013225220001	5551 179TH LN NW	MIN	55303-3335	RAMSEY	MOROZ GEORGE & JOY M	0.5	\$ 82.00
023225110022	17941 JUNKITE ST NW	MIN	55303-3318	RAMSEY	SHADRICK THOMAS W & TAMARA	1	\$ 164.00
023225110020	17916 IODINE ST NW	MIN	55303-3354	RAMSEY	DENGEL JACOB R	1	\$ 164.00
013225220018	17957 ERKIUM ST NW	MIN	55303-3328	RAMSEY	WARNEKE CHRISTOPHER & ROBB N	1	\$ 164.00
013225220033	5434 180TH LN NW	MIN	55303-3366	RAMSEY	BANK OF AMERICA N A TRUSTEE	1	\$ 164.00
013225220032		MIN	55303	RAMSEY	BANK OF AMERICA N A TRUSTEE	0	\$ -
023225110012	18014 IODINE ST NW	MIN	55303-3353	RAMSEY	GIDDINGS GARLAN R & NANCY P	1	\$ 164.00
023225110013	17956 JUNKITE ST NW	MIN	55303-3359	RAMSEY	VANG TRUE	1	\$ 164.00
023225110018	5630 180TH AVE NW	MIN	55303-3393	RAMSEY	MITCHELL KEITH	1	\$ 164.00
023225110019	17938 IODINE ST NW	MIN	55303-3354	RAMSEY	HEDEMARK JEDEDIAH E	1	\$ 164.00
013225220005	17944 GERMANIUM ST NW	MIN	55303-3355	RAMSEY	RUTTGER MIKE R & TAMMY JANE	1	\$ 164.00
013225220020	17917 ERKIUM ST NW	MIN	55303-3328	RAMSEY	HAVELKA GREGG A & NANCY A	1	\$ 164.00
013225220003	5551 180TH AVE NW	MIN	55303-3367	RAMSEY	TIMM STEVE	1	\$ 164.00
013225220027	5411 180TH AVE NW	MIN	55303-3330	RAMSEY	HODGMAN DAVID	1	\$ 164.00
023225110021	17917 JUNKITE ST NW	MIN	55303-3318	RAMSEY	MICHEALS MARK D	1	\$ 164.00
023225110023	17917 IODINE ST NW	MIN	55303-3320	RAMSEY	MILLER PAUL D & DONNA M	1	\$ 164.00
013225220006	17958 FLUORINE ST NW	MIN	55303-3364	RAMSEY	SOHNS BRIAN D & LAUREL T	1	\$ 164.00
013225220012	17958 ERKIUM ST NW	MIN	55303-3365	RAMSEY	DRUM DUWAYNE A	1	\$ 164.00
013225220024	5435 180TH LN NW	MIN	55303-3366	RAMSEY	MACLENNAN WILLIAM T & ERNST J	1	\$ 164.00
013225220019	17937 ERKIUM ST NW	MIN	55303-3328	RAMSEY	WIRKKALA DAVID W & SUSAN R	1	\$ 164.00
013225220021	18050 ERKIUM ST NW	MIN	55303-3327	RAMSEY	MARTIN CYNTHIA A	1	\$ 164.00
013225220022	18020 ERKIUM ST NW	MIN	55303-3327	RAMSEY	UREVIG MICHELLE	1	\$ 164.00

013225220015	17917 FLUORINE ST NW	MIN	55303-3322	RAMSEY	ANDERSON LAWRENCE E & JEAN D	1	\$	164.00
013225220016	17937 FLUORINE ST NW	MIN	55303-3322	RAMSEY	AUREN RYAN	1	\$	164.00
013225220010	17937 GERMANIUM ST NW	MIN	55303-3321	RAMSEY	DOWELL KEVIN G & EDWARDS S L	1	\$	164.00
013225220008	17918 FLUORINE ST NW	MIN	55303-3364	RAMSEY	HENDRICKS ROGER E & M K	1	\$	164.00
013225220004	17958 GERMANIUM ST NW	MIN	55303-3355	RAMSEY	NAULT SARAH	1	\$	164.00
013225220011	17957 GERMANIUM ST NW	MIN	55303-3321	RAMSEY	GRABAU GARY F & COLLEEN M	1	\$	164.00
013225220023	5449 180TH AVE NW	MIN	55303-3397	RAMSEY	BAUMGARD STEVEN N & ROSE A	1	\$	164.00
023225110024	17937 IODINE ST NW	MIN	55303-3320	RAMSEY	SCHEMPF TODD A & KAREN M	1	\$	164.00
013225220028	5433 180TH AVE NW	MIN	55303-3330	RAMSEY	KOLLMAN ADAM	1	\$	164.00
					<b>TOTAL</b>	<b>43.5</b>	<b>\$</b>	<b>7,134.00</b>



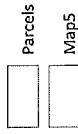
ANOKA COUNTY PID	PROPERTY ADDRESS	PROPERTY OWNER	STATE	ZIP	CITY	SHARE	EST. ASSESSMENT
063225310013	9240 176TH AVE NW	BOSE ERIC V & GRACE W	MN	55303-3154	RAMSEY	1 \$	164.00
063225240001	17710 EATON ST NW	BECK NEAL K & PHYLLIS A	MN	55303-3118	RAMSEY	1 \$	164.00
063225230006		RAMSEY CITY OF	MN	55303	RAMSEY	1 \$	164.00
063225240005	9305 ERMINE BLVD NW	GNITKA HOLLY	MN	55303-3115	RAMSEY	1 \$	164.00
073225240001	9210 169TH AVE NW	STAHLMANN HENRY C & K J	MN	55303-3172	RAMSEY	1 \$	164.00
073225210016	17210 BAUGH ST NW	KARPINSKE TRUSTEE DAVID & KARPINSKE TRUSTEE SUSAN	MN	55303-3160	RAMSEY	1 \$	164.00
073225210001	17130 DRISCOLL ST NW	FALK FREDERICK F & BEVERLY A	MN	55303-3130	RAMSEY	1 \$	164.00
073225210011	17205 DRISCOLL ST NW	GEISER JOHN H & SUSAN L	MN	55303-3129	RAMSEY	1 \$	164.00
073225210017	17150 BAUGH ST NW	WETZEL KENNETH A & LYNNE M	MN	55303-3152	RAMSEY	1 \$	164.00
063225230011	17700 EATON ST NW	THELEN JAMES A JR & JULIE M	MN	55303-3118	RAMSEY	1 \$	164.00
063225240007	9240 ERMINE BLVD NW	CHASE SAMUEL L & CHARLENE A	MN	55303-3116	RAMSEY	1 \$	164.00
063225240016	17711 EATON ST NW	COFFIN JERRY A & ANGELA M	MN	55303-3119	RAMSEY	1 \$	164.00
063225320006	9431 176TH AVE NW	OWENS WALTER T & F L	MN	55303-3167	RAMSEY	1 \$	164.00
063225340015	17330 DRISCOLL ST NW	MALONEY EDWIN & CONSTANCE L	MN	55303-3126	RAMSEY	1 \$	164.00
063225340016	17410 DRISCOLL ST NW	SUMSTAD RONALD P & L C	MN	55303-3124	RAMSEY	1 \$	164.00
063225310008	9221 176TH AVE NW	CIELOCHA JEFFREY & CATHLEEN	MN	55303-3155	RAMSEY	1 \$	164.00
063225320007	9420 176TH AVE NW	ANDERSON JERRY L & MARILYN A	MN	55303-3103	RAMSEY	1 \$	164.00
063225310002	9320 176TH AVE NW	CLARKIN DIANA	MN	55303-3104	RAMSEY	1 \$	164.00
063225220011	9430 180TH AVE NW	KOENIG ROGER L & PATRICIA A	MN	55303-3101	RAMSEY	1 \$	164.00
073225240012	17035 DRISCOLL ST NW	FRAULY TERRY & ELIZABETH A	MN	55303-3133	RAMSEY	1 \$	164.00
073225210012	17125 DRISCOLL ST NW	ZELLER MICHELE L	MN	55303-3131	RAMSEY	1 \$	164.00
063225340010	17421 DRISCOLL ST NW	MCFARLANE ALVIN C & MARILYN	MN	55303-3125	RAMSEY	1 \$	164.00
063225340017	17420 DRISCOLL ST NW	SIAS WAYNE	MN	55303-3124	RAMSEY	1 \$	164.00
073225240021	17040 DRISCOLL ST NW	ANDREASEN DAVID R & MARY J	MN	55303-3132	RAMSEY	1 \$	164.00
073225210013	17115 DRISCOLL ST NW	LUARK KAREN M & DONALD L	MN	55303-3131	RAMSEY	1 \$	164.00
063225220001	9421 180TH AVE NW	HAVRILLA RICHARD J & C J	MN	55303-3101	RAMSEY	1 \$	164.00
063225220007		WEST RONALD G & RANDEE K	MN	55303-3108	RAMSEY	1 \$	164.00
063225340018	17450 DRISCOLL ST NW	PATNODE BRIAN	MN	55303-3124	RAMSEY	1 \$	164.00
063225340006	17301 DRISCOLL ST NW	JOHNSON ROBERT P & MYRA K	MN	55303-3127	RAMSEY	1 \$	164.00
063225310012	9220 176TH AVE NW	MCEACHERN JEROLD J & A M	MN	55303-3154	RAMSEY	1 \$	164.00
063225310007	17641 EATON ST NW	JOHNSON BRUCE E & KIM A	MN	55303-3121	RAMSEY	1 \$	164.00
063225340011	17401 DRISCOLL ST NW	NELSON DOUGLAS & NANCY	MN	55303-3125	RAMSEY	1 \$	164.00
063225310004	9321 176TH AVE NW	PARRANTO CHARLES	MN	55303-3168	RAMSEY	1 \$	164.00
063225340007	17321 DRISCOLL ST NW	COUDRON JOEL L	MN	55303-3127	RAMSEY	1 \$	164.00
063225240003	17730 EATON ST NW	MAKI KELLI	MN	55303-3118	RAMSEY	1 \$	164.00
063225230007	9421 ERMINE BLVD NW	BURNS JOEL E	MN	55303-3113	RAMSEY	1 \$	164.00
073225240010	17030 DRISCOLL ST NW	HURLEY JOSEPH & DEBRA	MN	55303-3132	RAMSEY	1 \$	164.00
073225240017	17030 BAUGH ST NW	BIRCHEM ALLEN	MN	55303-3163	RAMSEY	1 \$	164.00
063225320002	9450 176TH AVE NW	MOSS DEBRA	MN	55303-3103	RAMSEY	1 \$	164.00
073225210007	17110 DRISCOLL ST NW	HOFFARD GARY M & S A	MN	55303-3130	RAMSEY	1 \$	164.00

073225240011	17045 DRISCOLL ST NW	OTTOMOELLER GARRY	MN	55303-3133	RAMSEY	1	\$	164.00
063225220019	9430 181ST AVE NW	PLASS CHESTER D	MN	55330-7702	RAMSEY	0.5	\$	82.00
063225310017	17605 EATON ST NW	MORD WILLIAM C & MARY E	MN	55303-3121	RAMSEY	1	\$	164.00
063225220016	9511 180TH AVE NW	YEAGER RICHARD A & RHONDA L	MN	55303-3165	RAMSEY	1	\$	164.00
063225220018		WEST RONALD G & RANDEE K	MN	55303	RAMSEY	1	\$	164.00
063225310014	9265 176TH AVE NW	MIERS JAMES A	MN	55303-3155	RAMSEY	1	\$	164.00
063225240011	9205 ERMINE BLVD NW	GOULD PATRICK F	MN	55303-3117	RAMSEY	1	\$	164.00
063225230001	17820 HALAS ST NW	MASSIMINO MICHELE	MN	55303-3106	RAMSEY	1	\$	164.00
073225240004	9230 169TH AVE NW	EDGETON TIMOTHY L & MARY ANN	MN	55303-3172	RAMSEY	1	\$	164.00
063225240015	17731 EATON ST NW	KREUSER JAMES A	MN	55303-3119	RAMSEY	1	\$	164.00
063225340014	17320 DRISCOLL ST NW	KRONDAK MICHAEL C & KIM D	MN	55303-3126	RAMSEY	1	\$	164.00
073225210010	17215 DRISCOLL ST NW	ANDERSON SUSAN M	MN	55303-3129	RAMSEY	1	\$	164.00
063225220006	17910 ERMINE BLVD NW	STANLEY RICHARD D & DAISY H	MN	55303-3108	RAMSEY	1	\$	164.00
063225220005		RAMSEY CITY OF	MN	55303	RAMSEY	1	\$	164.00
073225240007	9321 169TH AVE NW	DAHLBERG MICHAEL K & DIANE M	MN	55303-3105	RAMSEY	1	\$	164.00
063225330002	9501 173RD AVE NW	WILHELM LOUIS & J	MN	55303-3174	RAMSEY	1	\$	164.00
063225240002	9225 ERMINE BLVD NW	RYAN CLINTON J & MICHELLE A	MN	55303-3117	RAMSEY	1	\$	164.00
063225240012	9215 ERMINE BLVD NW	CHRISTY GREGORY & ROSINA	MN	55303-3117	RAMSEY	1	\$	164.00
063225240004	17714 EATON ST NW	MORRIS MARK E & PATRICIA A	MN	55303-3118	RAMSEY	1	\$	164.00
063225230009	17800 HALAS ST NW	DEBBAN ALAN A & WENDY E	MN	55303-3106	RAMSEY	1	\$	164.00
073225220002	9350 173RD AVE NW	NELSON JOEL F & JODEE L	MN	55303-3156	RAMSEY	1	\$	164.00
073225210005	17230 DRISCOLL ST NW	THORSON DENNIS A & MARY S	MN	55303-3128	RAMSEY	1	\$	164.00
063225320003	9520 176TH AVE NW	ONEIL BASIL W	MN	55303-3102	RAMSEY	1	\$	164.00
063225230008	17810 HALAS ST NW	NORELL H	MN	55303-3106	RAMSEY	1	\$	164.00
063225240013	9351 ERMINE BLVD NW	MCGHEE C	MN	55303-3115	RAMSEY	1	\$	164.00
063225320004	9400 176TH AVE NW	BORER JUSTIN	MN	55303-3103	RAMSEY	1	\$	164.00
063225310016	9340 176TH AVE NW	DELISLE SHARON	MN	55303-3104	RAMSEY	1	\$	164.00
073225210014	17230 BAUGH ST NW	MAMMANGA LARRY & ANNETTE	MN	55303-3160	RAMSEY	1	\$	164.00
073225210009	17225 DRISCOLL ST NW	JOHNSON PAMELA R	MN	55303-3129	RAMSEY	1	\$	164.00
063225340001	17451 DRISCOLL ST NW	HAUGLAND ERIK C & STOLL S L	MN	55303-3125	RAMSEY	1	\$	164.00
073225240019	17010 BAUGH ST NW	PERFETTO JAMES N & V A	MN	55303-3163	RAMSEY	1	\$	164.00
073225240015	16935 DRISCOLL ST NW	OVALL JESSICA	MN	55303-3135	RAMSEY	1	\$	164.00
073225240020	16930 BAUGH ST NW	BOEHLERT ISAIAH	MN	55303-3153	RAMSEY	1	\$	164.00
073225240009	17020 DRISCOLL ST NW	QUISBERG MICHAEL	MN	55303-3132	RAMSEY	1	\$	164.00
073225240018	17020 BAUGH ST NW	DICKES JOHN J & LINDA J	MN	55303-3163	RAMSEY	1	\$	164.00
073225240014	17015 DRISCOLL ST NW	MOSHER DENNIS M	MN	55303-3133	RAMSEY	1	\$	164.00
073225210006	17120 DRISCOLL ST NW	ANDERSON KAREN	MN	55303-3130	RAMSEY	1	\$	164.00
073225210018	17130 BAUGH ST NW	KUSCH BARRY J	MN	55303-3152	RAMSEY	1	\$	164.00
063225220013	9410 180TH AVE NW	BAYNHAM IRENE J & JOHN E	MN	55303-3101	RAMSEY	1	\$	164.00
063225220009	9515 ERMINE BLVD NW	NIELSEN JEFFREY A & SHELLY L	MN	55303-3111	RAMSEY	1	\$	164.00
063225220008	9501 ERMINE BLVD NW	MCCURRY MICHAEL L & HELEN M	MN	55303-3111	RAMSEY	1	\$	164.00

063225220010	9500 180TH AVE NW	HOFFMAN JAY M & JEAN M	MN	55303-3166	RAMSEY	1	\$	164.00
063225330001	9501 173RD AVE NW	WILHELMI TRUSTEE JOLEEN & WILHELMI TRUSTEE LOUIS	MN	55303	RAMSEY	0	\$	-
063225310003	17511 DRISCOLL ST NW	HOKKANEN MICHAEL W	MN	55303-3123	RAMSEY	1	\$	164.00
063225310015	17521 DRISCOLL ST NW	FLAWS SCOTT M	MN	55303-3123	RAMSEY	1	\$	164.00
063225340012	17351 DRISCOLL ST NW	MINKE CHRISTINE	MN	55303-3127	RAMSEY	1	\$	164.00
073225210003	17210 DRISCOLL ST NW	SABA LAWRENCE R & B J	MN	55303-3128	RAMSEY	1	\$	164.00
063225240008	17721 EATON ST NW	OANES RICHARD E & LIANE M	MN	55303-3119	RAMSEY	1	\$	164.00
063225310005	9255 176TH AVE NW	MARTINSON JEFFREY	MN	55303-3155	RAMSEY	1	\$	164.00
063225230002	9500 ERMINE BLVD NW	BAYER PATRICIA C	MN	55303-3110	RAMSEY	1	\$	164.00
063225230005	9401 ERMINE BLVD NW	HENDRICKS DANIEL B & VICKI M	MN	55303-3113	RAMSEY	1	\$	164.00
073225210015	17220 BAUGH ST NW	MARTIN WILLIAM R & J E	MN	55303-3160	RAMSEY	1	\$	164.00
063225240006	9331 ERMINE BLVD NW	KRUGER TIMOTHY S	MN	55303-3115	RAMSEY	1	\$	164.00
063225230004	17811 HALAS ST NW	KOLYER JAMES	MN	55303-3107	RAMSEY	1	\$	164.00
073225240013	17025 DRISCOLL ST NW	ANTONSON MICHAEL & BARBARA	MN	55303-3133	RAMSEY	1	\$	164.00
063225220012	9420 180TH AVE NW	TAUBERT EVELYN	MN	55303-3101	RAMSEY	1	\$	164.00
063225220004	17960 ERMINE BLVD NW	WEST RONALD G & RANDEE K	MN	55303	RAMSEY	1	\$	164.00
063225340013	9335 173RD AVE NW	NARVESON DIANE	MN	55303-3169	RAMSEY	1	\$	164.00
073225210008	17235 DRISCOLL ST NW	PATTERSON S M & VENTURELLA K L	MN	55303-3129	RAMSEY	1	\$	164.00
073225210004	17220 DRISCOLL ST NW	TURCOTTE AIMEE	MN	55303-3128	RAMSEY	1	\$	164.00
073225240008	17010 DRISCOLL ST NW	MIKKOLA WAYNE M & JUDY A	MN	55303-3132	RAMSEY	1	\$	164.00
063225320009	17610 EATON ST NW	VOKES LARRY W & JUDY K	MN	55303-3120	RAMSEY	1	\$	164.00
073225240003	9310 169TH AVE NW	RICHARDS DANNY P & MARCIA D	MN	55303-3105	RAMSEY	1	\$	164.00
073225240005	9220 169TH AVE NW	WAGENKNECHT DANIEL W & D S	MN	55303-3172	RAMSEY	1	\$	164.00
063225230012	9420 ERMINE BLVD NW	BILLMARK JUDITH A	MN	55303-3112	RAMSEY	1	\$	164.00
073225240002	9320 169TH AVE NW	GUSTAFSON BEVERLY	MN	55303-3105	RAMSEY	1	\$	164.00
063225320001	9468 176TH AVE NW	HAWK MELODY	MN	55303-3103	RAMSEY	1	\$	164.00
063225310006	17611 EATON ST NW	ANDERSON ROGER A & MARY L	MN	55303-3121	RAMSEY	1	\$	164.00
073225240016	17040 BAUGH ST NW	JUTILA TIMOTHY J & PAMELA K	MN	55303-3163	RAMSEY	1	\$	164.00
073225210019	17110 BAUGH ST NW	MATTSON CHARLES S & G	MN	55303-3152	RAMSEY	1	\$	164.00
063225340008	9221 173RD AVE NW	MCNAMARA RANDIN	MN	55303-3170	RAMSEY	1	\$	164.00
063225220003	17930 ERMINE BLVD NW	GILBERTSON JAMES R & D K	MN	55303-3108	RAMSEY	1	\$	164.00
063225240014	9220 ERMINE BLVD NW	BAKKEN SANDRA	MN	55303-3116	RAMSEY	1	\$	164.00
073225240006	9380 169TH AVE NW	LINDGREN DONALD	MN	55303-3105	RAMSEY	1	\$	164.00
063225320008	17640 EATON ST NW	CURRAN TIMOTHY	MN	55303-3120	RAMSEY	1	\$	164.00
063225320005	9421 176TH AVE NW	EMBERTSON RONALD E & S J	MN	55303-3167	RAMSEY	1	\$	164.00
					TOTAL	114.5	\$	18,778.00



Map 5  
Welcomes Road  
IP 11-02



This map has been compiled using information published in various government offices and on records provided for our use. The City does not warrant the accuracy of the information shown on this map. The City does not represent that the GIS data can be used for exact measurement of distance or direction. It is the user's responsibility to verify the accuracy of the information. The City of Ramsey is not responsible for any and all claims brought by third parties for damages or injuries resulting from the use of this map. The City of Ramsey is not responsible for any and all claims brought by third parties for damages or injuries resulting from the use of this map.



ANOKA COUNTY PID	PROPERTY ADDRESS	STATE	ZIP	CITY	PROPERTY OWNER	SHARE	EST. ASSESSMENT
163225120006	7501 164TH LN NW	MN	55303-3662	RAMSEY	NELSON MATTHEW A & MICHELLE M	1 \$	164.00
163225120013	7530 163RD LN NW	MN	55303-3687	RAMSEY	SHUMWAY TRUSTEE CAROLYN	1 \$	164.00
163225120003		MN	55303	RAMSEY	KONEN JAMES E & V M	1 \$	164.00
163225120016	16411 SAPPHERE ST NW	MN	55303-3604	RAMSEY	KLUENDER WAYNE A	1 \$	164.00
163225120018	16441 SAPPHERE ST NW	MN	55303-3604	RAMSEY	SMITH RACHELLE	1 \$	164.00
163225120011	16420 URANIMITE ST NW	MN	55303-3602	RAMSEY	SCHULTZ JACQUELINE A	1 \$	164.00
163225120001	7520 164TH LN NW	MN	55303-3663	RAMSEY	SIEBERT SCOTT	1 \$	164.00
163225120004	16471 SAPPHERE ST NW	MN	55303-3604	RAMSEY	HOWE ADELBERT	1 \$	164.00
163225120017	16421 SAPPHERE ST NW	MN	55303-3604	RAMSEY	COCHRAN SUSAN	1 \$	164.00
163225120010	7550 163RD LN NW	MN	55303-3687	RAMSEY	ZIMMERMAN GERALD A & C M	1 \$	164.00
163225120015		MN	55303	RAMSEY	SHUMWAY TRUSTEE CAROLYN	1 \$	164.00
163225120012		MN	55303	RAMSEY	SHUMWAY TRUSTEE CAROLYN	1 \$	164.00
163225120020	16390 URANIMITE ST NW	MN	55303-3603	RAMSEY	NYSTROM ADAM R	1 \$	164.00
163225120009	16448 URANIMITE ST NW	MN	55303-3602	RAMSEY	BRANTZ WILLIAM J	1 \$	164.00
163225120008	7521 164TH LN NW	MN	55303-3662	RAMSEY	RITCEY JOHN W	1 \$	164.00
163225120005	7441 164TH LN NW	MN	55303-3664	RAMSEY	ROBERTS JAMES R & KAREN A	1 \$	164.00
163225120002	16400 URANIMITE ST NW	MN	55303-3602	RAMSEY	CHARETTE KATHIE M	1 \$	164.00
163225120014	7410 164TH AVE NW	MN	55303-3630	RAMSEY	KONEN JAMES	1 \$	164.00
163225120019	16310 URANIMITE ST NW	MN	55303-3603	RAMSEY	HANSON DEAN	1 \$	164.00
					<b>TOTAL</b>	<b>19 \$</b>	<b>3,116.00</b>

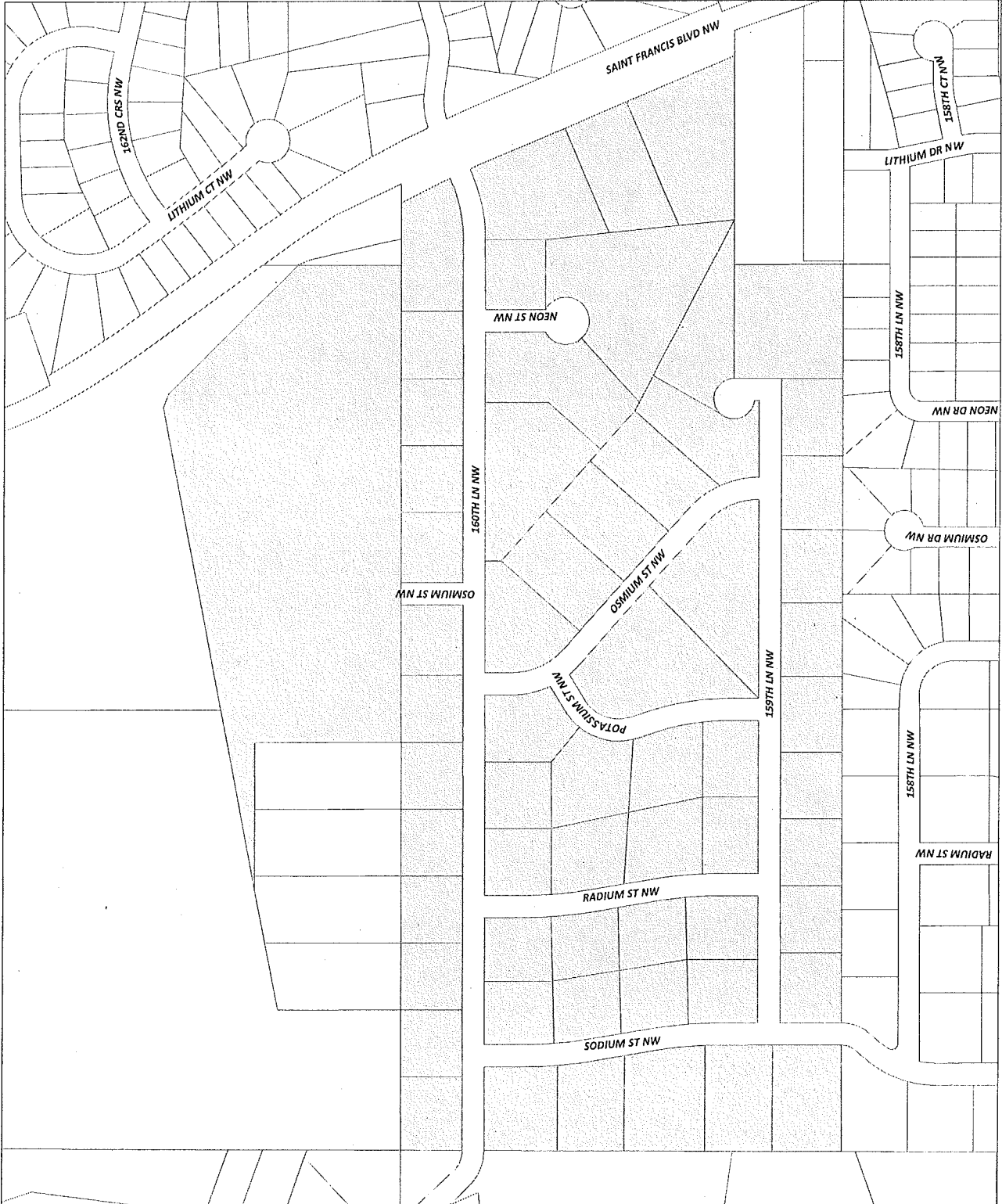


Map 6  
Hall Anderson Acres  
IP 11-02



0 135 270 Feet

This map has been compiled using information and/or data from various governmental offices and other sources. The City of Ramsey is not responsible for the accuracy of the information and/or data provided. The City of Ramsey is not responsible for the accuracy of the information and/or data provided. The City of Ramsey is not responsible for the accuracy of the information and/or data provided.

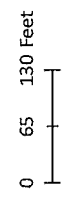
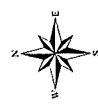
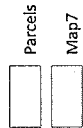


ANOKA COUNTY PID	PROPERTY ADDRESS	STATE	ZIP	CITY	PROPERTY OWNER	SHARE	EST. ASSESSMENT
143225420014	15931 OSMIUM ST NW	MN	55303-4172	RAMSEY	ACKERMAN MICHAEL J	1	\$ 164.00
143225310005	15900 SODIUM ST NW	MN	55303-4107	RAMSEY	ZELADA ABELINO & LINDA M	1	\$ 164.00
143225310031	6040 159TH LN NW	MN	55303-4130	RAMSEY	FLOERCHINGER AMY	1	\$ 164.00
143225310030	6060 159TH LN NW	MN	55303-4130	RAMSEY	EFRAM KEVIN L & NORETTA M	1	\$ 164.00
143225310023	15921 RADIUM ST NW	MN	55303-4112	RAMSEY	KEUPER JOHN H & SHARON A	1	\$ 164.00
143225310020	6040 160TH LN NW	MN	55303-4124	RAMSEY	BRUNDIN JASON & SARAH	1	\$ 164.00
143225310022	15951 RADIUM ST NW	MN	55303-4112	RAMSEY	THOMPSON ROGER D & S E	1	\$ 164.00
143225310012	16021 SODIUM ST NW	MN	55303-4106	RAMSEY	PETERSON DAVID	1	\$ 164.00
143225420002	5951 160TH LN NW	MN	55303-4165	RAMSEY	TRYGVE NEVLAND & PAMELA	1	\$ 164.00
143225420020	5911 160TH LN NW	MN	55303-4127	RAMSEY	METZGER LARRY & SUSAN	1	\$ 164.00
143225420013	15941 OSMIUM ST NW	MN	55303-4172	RAMSEY	SUNDEEN CLAUDIA	1	\$ 164.00
143225410008	5801 160TH LN NW	MN	55303-4749	RAMSEY	DVORAK GERALD F & BARBARA L	1	\$ 164.00
143225310021	16001 RADIUM ST NW	MN	55303-4160	RAMSEY	BOSCHEE ROBERT & SUSAN M	1	\$ 164.00
143225420012	15961 OSMIUM ST NW	MN	55303-4172	RAMSEY	DAHLIN JOHN W & RUTH A	1	\$ 164.00
143225310032	6020 159TH LN NW	MN	55303-4130	RAMSEY	MOSENG COLLEEN	1	\$ 164.00
143225310014	15941 SODIUM ST NW	MN	55303-4108	RAMSEY	STEINKE GARY R & SANDRA M	1	\$ 164.00
143225410007	16030 SAINT FRANCIS BLVD NW	MN	55303-5901	RAMSEY	KALLA LARRY F & CAROLYN A	1	\$ 164.00
143225420023	5821 160TH LN NW	MN	55303-4749	RAMSEY	BROCKAMP BRIAN O	1	\$ 164.00
143225420021	5851 160TH LN NW	MN	55303-4749	RAMSEY	MADZEY RICHARD A & M A	1	\$ 164.00
143225420006	5910 159TH LN NW	MN	55303-4131	RAMSEY	GERRICK JOHN	1	\$ 164.00
143225310006	6151 160TH LN NW	MN	55303-4123	RAMSEY	FORDER NANCEE A & BRAY WILLIAM	1	\$ 164.00
143225310017	15940 RADIUM ST NW	MN	55303-4111	RAMSEY	KERNS WILLIAM D & MARLENE A	1	\$ 164.00
143225420011	16021 OSMIUM ST NW	MN	55303-4120	RAMSEY	STORBAKKEN CHAD	1	\$ 164.00
143225310013	16011 SODIUM ST NW	MN	55303-4106	RAMSEY	MITCHELL D E & C J	1	\$ 164.00
143225310026	16010 POTASSIUM ST NW	MN	55303-4162	RAMSEY	THIELING MICHAEL & JOANN	1	\$ 164.00
143225310007	6141 160TH LN NW	MN	55303-4123	RAMSEY	PIOSKE MARK A & CAROL A	1	\$ 164.00
143225420009	5921 159TH LN NW	MN	55303-4169	RAMSEY	KOLBOW DAVID & JANIE E	1	\$ 164.00
143225420015	5831 159TH LN NW	MN	55303-4170	RAMSEY	ULSTAD ORVIN W & RUTH A	1	\$ 164.00
143225410005	15950 SAINT FRANCIS BLVD	MN	55303-5946	RAMSEY	RONEY JAMES J & SHARON K	1	\$ 164.00
143225310004	15920 SODIUM ST NW	MN	55303-4107	RAMSEY	BAUERLY JACOB & MAURER JOANNE	1	\$ 164.00
143225420010	16031 OSMIUM ST NW	MN	55303-4120	RAMSEY	MOSHIER DEBORAH A	1	\$ 164.00
143225310028	16020 POTASSIUM ST NW	MN	55303-4162	RAMSEY	JOHNSON ERIC	1	\$ 164.00
143225420007	5840 159TH LN NW	MN	55303-4132	RAMSEY	SHELDON D THOMAS & B A	1	\$ 164.00
143225420005	5920 159TH LN NW	MN	55303-4131	RAMSEY	ERICKSON ROBERT E & PAULA J	1	\$ 164.00
143225420004	5940 159TH LN NW	MN	55303-4131	RAMSEY	TURNER DONALD J & KENDRA M	1	\$ 164.00
143225310033	6010 159TH LN NW	MN	55303-4130	RAMSEY	JOHNSON CHARLES F & JODI L	1	\$ 164.00
143225420022	5841 160TH LN NW	MN	55303-4749	RAMSEY	JELINEK RAYMOND E & DAWN B	1	\$ 164.00
143225310010	6031 160TH LN NW	MN	55303-4125	RAMSEY	GERGELY JOSEPH L III & SUSAN M	1	\$ 164.00
143225310008	6121 160TH LN NW	MN	55303-4123	RAMSEY	WIGEN ROGER A & CHARLOTTE G	1	\$ 164.00
143225420019	5840 160TH LN NW	MN	55303-4750	RAMSEY	HILLEBREGT ANITA S	1	\$ 164.00

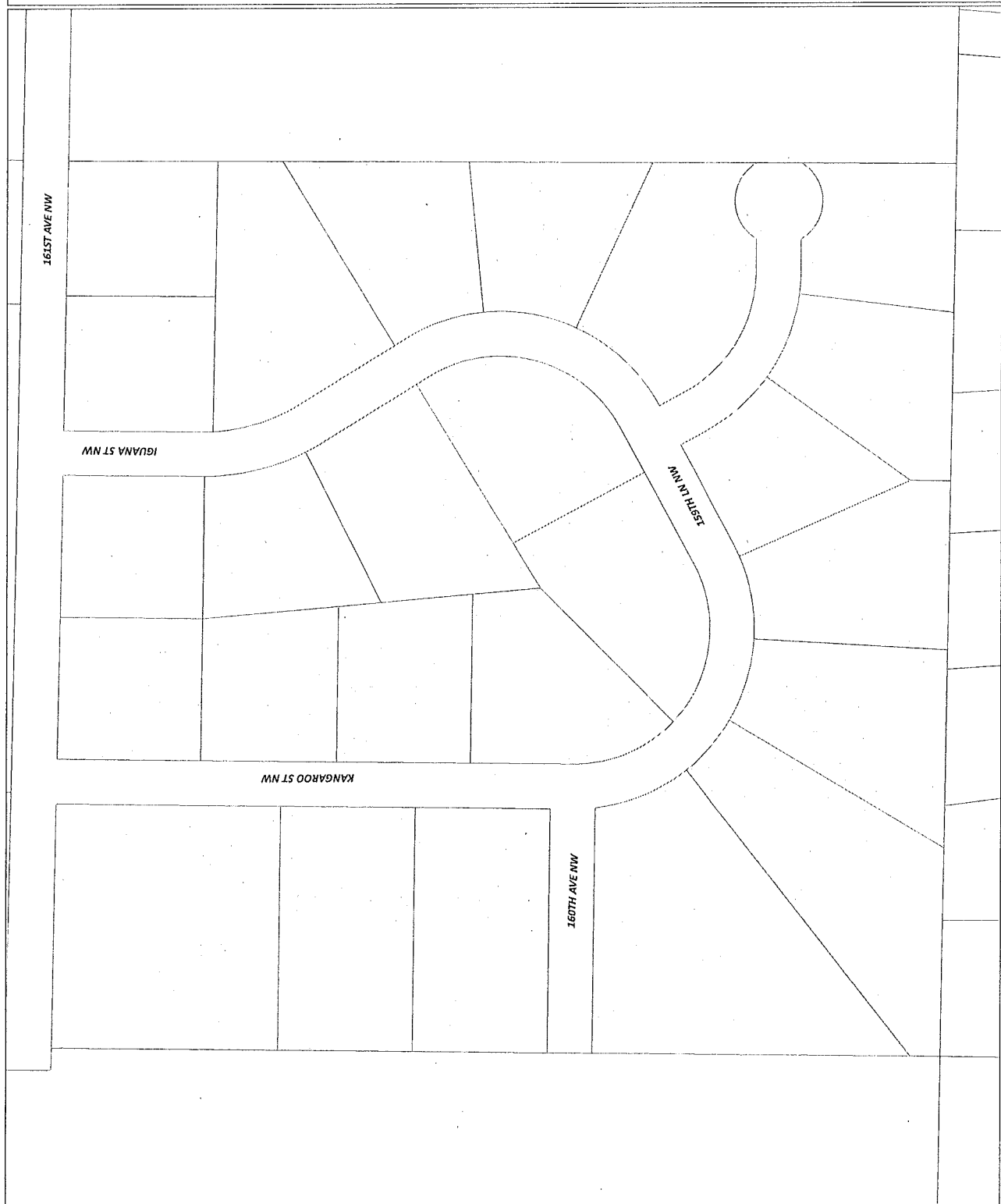
143225310019	6100 160TH LN NW	MN	55303-4122	RAMSEY	REVARD DOUGLAS F	1	\$	164.00
143225310001	16020 SODIUM ST NW	MN	55303-4105	RAMSEY	LEE JAMES O & JANICE E	1	\$	164.00
143225310005	16151 OSMIUM ST NW	MN	55303-4177	RAMSEY	MORTENSON LYNN	1	\$	164.00
143225310029	15901 SODIUM ST NW	MN	55303-4158	RAMSEY	GRAFFUNDER ANN-MARIE	1	\$	164.00
143225310024	6021 159TH LN NW	MN	55303-4168	RAMSEY	YOST EDWARD F & GULLA MARY J	1	\$	164.00
143225420003	5941 160TH LN NW	MN	55303-4165	RAMSEY	RUST ROLAND M & SHARON M	1	\$	164.00
143225410006	16000 SAINT FRANCIS BLVD NW	MN	55303-5901	RAMSEY	BOLIER GREGORY A	1	\$	164.00
143225310009	6051 160TH LN NW	MN	55303-4125	RAMSEY	SCHRAMM ALAN R & C M	1	\$	164.00
143225420016	16031 NEON ST NW	MN	55303-4164	RAMSEY	DEBAERE KIMBERLY	1	\$	164.00
143225420018	16020 NEON ST NW	MN	55303-4174	RAMSEY	GERVAIS DIANE L	1	\$	164.00
143225420017	16021 NEON ST NW	MN	55303-4164	RAMSEY	GAMEC THOMAS G & SYLVIA K	1	\$	164.00
143225310002	16010 SODIUM ST NW	MN	55303-4105	RAMSEY	LEA ROBERT W & VERNELL S	1	\$	164.00
143225420008	15951 POTASSIUM ST NW	MN	55303-4118	RAMSEY	JOHNSON DAVID R & SUSAN R	1	\$	164.00
143225310003	15940 SODIUM ST NW	MN	55303-4107	RAMSEY	KALLENBACH ARTHUR J	1	\$	164.00
143225310025	15940 POTASSIUM ST NW	MN	55303-4117	RAMSEY	MANSKE GEORGE J & CAROL A	1	\$	164.00
143225310015	6121 159TH LN NW	MN	55303-4166	RAMSEY	AWSUMB CLIFFORD R & MARY B	1	\$	164.00
143225420001	5821 159TH LN NW	MN	55303-4170	RAMSEY	LANDWEHR MILES D & DEBORAH	1	\$	164.00
143225310027	6020 160TH LN NW	MN	55303-4124	RAMSEY	MAVEUS TERRY C & M F	1	\$	164.00
143225310016	15920 RADIUM ST NW	MN	55303-4111	RAMSEY	RONALLO LAURIE	1	\$	164.00
143225310018	16000 RADIUM ST NW	MN	55303-4159	RAMSEY	MINKLER CAROL ANN	1	\$	164.00
143225310011	6011 160TH LN NW	MN	55303-4125	RAMSEY		1	\$	164.00
					<b>TOTAL</b>	<b>61</b>	<b>\$</b>	<b>10,004.00</b>



Map 7  
Forest Hideaway  
IP 11-02



This map has been compiled using information gathered from various sources, including aerial photos and other data. The City does not warrant the accuracy of the information shown on this map. The City does not represent that the GIS data can be used for exact measurements of distance or direction, or for any other purpose. The City of Ramsey, Minnesota, is not responsible for the accuracy of the information shown on this map. The City of Ramsey, Minnesota, is not responsible for the accuracy of the information shown on this map. The City of Ramsey, Minnesota, is not responsible for the accuracy of the information shown on this map.



<u>ANOKA COUNTY PID</u>	<u>PROPERTY ADDRESS</u>	<u>STATE</u>	<u>ZIP</u>	<u>CITY</u>	<u>PROPERTY OWNER</u>	<u>SHARE</u>	<u>EST. ASSESSMENT</u>
173225420021	8260 159TH LN NW	MIN	55303-3812	RAMSEY	OLSON DENNIS	1 \$	164.00
173225420006	16020 IGUANA ST NW	MIN	55303-3821	RAMSEY	JOHNSTON RICHARD L	1 \$	164.00
173225420010	16011 KANGAROO ST NW	MIN	55303-3814	RAMSEY	RAY MICHAEL	1 \$	164.00
173225420024	8204 159TH LN NW	MIN	55303-3812	RAMSEY	GUSTAFSON SCOTT D & MARY M	1 \$	164.00
173225420001	16060 KANGAROO ST NW	MIN	55303-3813	RAMSEY	FYTEN STEPHEN R & MICHELE D	1 \$	164.00
173225420012	16051 KANGAROO ST NW	MIN	55303-3814	RAMSEY	JENSEN STEVEN & JOAN	1 \$	164.00
173225420015	16025 IGUANA ST NW	MIN	55303-3822	RAMSEY	BAKER PATRICK H & BARBARA M	1 \$	164.00
173225420011	16041 KANGAROO ST NW	MIN	55303-3814	RAMSEY	NELSON JAMES O & LYNÑ S	1 \$	164.00
173225420005	16030 IGUANA ST NW	MIN	55303-3821	RAMSEY	MERRY ROE	1 \$	164.00
173225420018	8221 159TH LN NW	MIN	55303-3868	RAMSEY	THOMAS WILLIAM J & LINDA R	1 \$	164.00
173225420023	8220 159TH LN NW	MIN	55303-3812	RAMSEY	MOEN RICHARD D & LOIS A	1 \$	164.00
173225420022	8240 159TH LN NW	MIN	55303-3812	RAMSEY	THOMPSON GARY L D & CARYL J	1 \$	164.00
173225420019	8324 159TH LN NW	MIN	55303-3862	RAMSEY	NELSON JAMES C & TERESA L	1 \$	164.00
173225420020	8310 159TH LN NW	MIN	55303-3862	RAMSEY	BEKERIS BRUNO A & RITA A	1 \$	164.00
173225420013	16051 IGUANA ST NW	MIN	55303-3822	RAMSEY	PFEIFER RODNEY J & WENDY	1 \$	164.00
173225420016	16015 IGUANA ST NW	MIN	55303-3822	RAMSEY	HAMBLET JAMES	1 \$	164.00
173225420008	8261 159TH LN NW	MIN	55303-3868	RAMSEY	MOTZ BONNIE	1 \$	164.00
173225420007	15950 IGUANA ST NW	MIN	55303-8002	RAMSEY	MAAG THOMAS G & CYNTHIA L	1 \$	164.00
173225420025		MIN	55303	RAMSEY	RAMSEY CITY OF	1 \$	164.00
173225420009	16001 KANGAROO ST NW	MIN	55303-3814	RAMSEY	BEBEAU RANDY R	1 \$	164.00
173225420017	16001 IGUANA ST NW	MIN	55303-3822	RAMSEY	OSEID PHILIP A & D L	1 \$	164.00
173225420003	8351 160TH AVE NW	MIN	55303-3860	RAMSEY	HOFFMAN WILLIAM D & TERRI L	1 \$	164.00
173225420004	16050 IGUANA ST NW	MIN	55303-3821	RAMSEY	NELSON THOMAS H & I M	1 \$	164.00
173225420002	16030 KANGAROO ST NW	MIN	55303-3813	RAMSEY	WAGNER BARBARA	1 \$	164.00
				<b>TOTAL</b>		<b>24 \$</b>	<b>3,936.00</b>

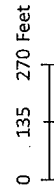


ANOKA COUNTY PID	PROPERTY ADDRESS	STATE	ZIP	CITY	OWNER	SHARE	EST. ASSESSMENT
083225430005	16601 KANGAROO CIR	MN	55303-3484	RAMSEY	KRUSE MICHAEL J & JODELL E	1	\$ 244.00
083225430006	16500 KANGAROO ST NW	MN	55303-3419	RAMSEY	WILSON JEFFREY & ELIZABETH	1	\$ 244.00
173225140006	8051 163RD AVE NW	MN	55303-3483	RAMSEY	LIZAKOWSKI JASON	1	\$ 244.00
173225130008	8250 163RD AVE NW	MN	55303-3480	RAMSEY	NEMEC WILLIAM & MONCHAMP SHARI	1	\$ 244.00
173225130012	8221 161ST AVE NW	MN	55303-3843	RAMSEY	BENSON RONALD H & LUCINDA K	1	\$ 244.00
173225140003	16201 FERRET ST NW	MN	55303-3431	RAMSEY	WICK LAWRENCE D & BARBARA M	1	\$ 244.00
173225130011	8241 161ST AVE NW	MN	55303-3843	RAMSEY	HANSON BOYD R & SHIRLEY A	1	\$ 244.00
173225110005	16361 FERRET ST NW	MN	55303-3430	RAMSEY	CUSHING CHARLES	1	\$ 244.00
173225110004	16381 FERRET ST NW	MN	55303-3430	RAMSEY	MONTOUR CHRISTINE	1	\$ 244.00
173225130010		MN	55303	RAMSEY	HANSON BOYD R & SHIRLEY A	1	\$ 244.00
173225120007	16300 KANGAROO ST NW	MN	55303-3472	RAMSEY	HINKEMEYER DAVID	1	\$ 244.00
173225120012	8301 163RD AVE NW	MN	55303-3463	RAMSEY	BREHM DANIEL R & CATHY A	1	\$ 244.00
173225120004	16400 KANGAROO ST NW	MN	55303-3470	RAMSEY	UNZELMAN MARY J	1	\$ 244.00
173225140007	8200 163RD AVE NW	MN	55303-3480	RAMSEY	DORR HERBERT T & CORICE L	1	\$ 244.00
173225140008	8100 163RD AVE NW	MN	55303-3482	RAMSEY	TEVOGT JENNIFER M	1	\$ 244.00
173225120003	16450 KANGAROO ST NW	MN	55303-3470	RAMSEY	WALLRICH RICHARD	1	\$ 244.00
173225120005	16401 KANGAROO ST NW	MN	55303-3470	RAMSEY	JOHNSON GARY F & JANET L	1	\$ 244.00
173225120013	16320 HEDGEHOG ST NW	MN	55303-3473	RAMSEY	GRICKO ARLENE	1	\$ 244.00
173225120011	8351 163RD AVE NW	MN	55303-3462	RAMSEY	SHAY JOHN P & MARY E	1	\$ 244.00
173225130009	16171 LLAMA ST NW	MN	55303-3417	RAMSEY	WETTERLIND BRIAN F & DENISE K	1	\$ 244.00
173225120008	16350 KANGAROO ST NW	MN	55303-3472	RAMSEY	PARSONS ELAINE	1	\$ 244.00
173225120014	16340 HEDGEHOG ST NW	MN	55303-3473	RAMSEY	LEHMAN FREDRICK E & CYNTHIA	1	\$ 244.00
173225420014	8204 161ST AVE NW	MN	55303-3841	RAMSEY	LESTER JEFFREY A & MICHELE	1	\$ 244.00
173225410002	8154 161ST AVE NW	MN	55303-3859	RAMSEY	WETTERLIND LOREN R & S J	1	\$ 244.00
173225410010	8050 161ST AVE NW	MN	55303-3853	RAMSEY	MUJICH HENRY F	1	\$ 244.00
083225430007		MN	55303	RAMSEY	MILLER TRUSTEE MARILYN & MILLER TRUSTEE THOMAS	0	\$ -
173225120002		MN	55303	RAMSEY	WILSON JEFFREY & ELIZABETH	0	\$ -
173225130003	8231 163RD AVE NW	MN	55303-3479	RAMSEY	MOLINE LORRIE	1	\$ 244.00
173225130004	8201 163RD AVE NW	MN	55303-3479	RAMSEY	BOONE SUSAN M	1	\$ 244.00
173225240001	8404 161ST AVE NW	MN	55303-3807	RAMSEY	DELANEY CHARLES L & LORAL I	1	\$ 244.00
173225140009	16200 FERRET ST NW	MN	55303-3442	RAMSEY	WAIT RICHARD W	1	\$ 244.00
083225430003	16600 KANGAROO CIR	MN	55303-3484	RAMSEY	PETERSEN JOHN P & JANIS	1	\$ 244.00
173225130002	8251 163RD AVE NW	MN	55303-3479	RAMSEY	KNAUS ALAN J & CHERYL A	1	\$ 244.00
173225140010	8051 161ST AVE NW	MN	55303-3854	RAMSEY	DAHLE AARON Z	1	\$ 244.00
173225120010	16301 KANGAROO ST NW	MN	55303-3472	RAMSEY	CHRISTOFERSON DAVE	1	\$ 244.00
173225110006	16341 FERRET ST NW	MN	55303-3430	RAMSEY	KUJAWA RICHARD A	1	\$ 244.00
173225110008	16340 FERRET ST NW	MN	55303-3475	RAMSEY	RICK TODD K & LAURIE A	1	\$ 244.00
173225130005	8350 163RD AVE NW	MN	55303-3464	RAMSEY	WEBER TROY	1	\$ 244.00
173225140002	16301 FERRET ST NW	MN	55303-3430	RAMSEY	LITKE EUGENE	1	\$ 244.00
173225130006	16201 LLAMA ST NW	MN	55303-3471	RAMSEY	HANSON JEROME A	1	\$ 244.00

173225140001	16321 FERRET ST NW	MN	55303-3430	RAMSEY	DAY ERIC A	1	\$	244.00
173225130007	8300 163RD AVE NW	MN	55303-3464	RAMSEY	MOBRY THOMAS L & ROSE M	1	\$	244.00
173225110007	16321 HEDGEHOG ST NW	MN	55303-3428	RAMSEY	NYSTROM LON R & STACY J	1	\$	244.00
173225140012	8151 161ST AVE NW	MN	55303-3867	RAMSEY	LINDGREN GENE E & MARLENE J	1	\$	244.00
173225140004	16101 FERRET ST NW	MN	55303-3457	RAMSEY	BASS PAUL A & CYNTHIA M	1	\$	244.00
173225120009	16351 KANGAROO ST NW	MN	55303-3472	RAMSEY	MICHALOV RONALD & JANICE	1	\$	244.00
083225430004	16651 KANGAROO CIR	MN	55303-3484	RAMSEY	ANDERSON AMY	1	\$	244.00
173225110002	16360 HEDGEHOG ST NW	MN	55303-3473	RAMSEY	IVES RONALD I & SANDRA A	1	\$	244.00
173225140005	8101 163RD AVE NW	MN	55303-3481	RAMSEY	JUDGE SALLYANN D	1	\$	244.00
173225120006	16501 KANGAROO ST NW	MN	55303-3419	RAMSEY	MILLER TRUSTEE MARILYN & MILLER TRUSTEE THOMAS	1	\$	244.00
173225110009	16320 FERRET ST NW	MN	55303-3475	RAMSEY	FULLER ROBERT D & BARBARA A	1	\$	244.00
173225140011	8101 161ST AVE NW	MN	55303-3867	RAMSEY	LUTZ JAMES P	1	\$	244.00
173225410006		MN	55303	RAMSEY	MOX MORRIE S & PASQUALINA	1	\$	244.00
173225110003	16380 HEDGEHOG ST NW	MN	55303-3473	RAMSEY	GREEN DAVID M & ERICA J	1	\$	244.00
					<b>TOTAL</b>	<b>52</b>	<b>\$</b>	<b>12,688.00</b>



**Map 9**  
**Alpaca Estates 2nd & 3rd**  
**IP 11-03**



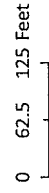
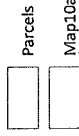
This map has been compiled using information supplied from various governmental offices and is provided for informational purposes only. The City does not warrant the accuracy or completeness of the information provided hereon. The City does not represent that the GIS data can be used for exact measurement of distance or direction, and no liability shall be assumed by the City for any errors or omissions. If you are a contractor or other professional, you should verify the information provided hereon with the appropriate governmental agency. The City of Ramsey is not responsible for any errors or omissions in this map, and the user of this map acknowledges that the City of Ramsey is not liable for any errors or omissions in this map, and the user of this map acknowledges that the City of Ramsey is not liable for any errors or omissions in this map.



ANOKA COUNTY PID	PROPERTY ADDRESS	STATE	ZIP	CITY	PROPERTY OWNER	SHARE	EST. ASSESSMENT
283225330014	7854 142ND AVE NW	MN	55303-7269	RAMSEY	BROWN ROBERT W & KAREN L	1 \$	244.00
283225330004	7913 142ND AVE NW	MN	55303-7272	RAMSEY	PLESSEL WM J JR & HEGQUIST BJ	1 \$	244.00
293225440004	8150 142ND AVE NW	MN	55303-7288	RAMSEY	LEE DAVID T & EVELYN	1 \$	244.00
293225410020	14312 ARMSTRONG BLVD NW	MN	55303-7281	RAMSEY	BORSTAD DALE	1 \$	244.00
283225330015	7822 142ND AVE NW	MN	55303-7269	RAMSEY	TOSO MARY	1 \$	244.00
293225440012	8161 142ND AVE NW	MN	55303-7289	RAMSEY	BURGER JEFFREY	1 \$	244.00
293225440011	8141 142ND AVE NW	MN	55303-7289	RAMSEY	BRYANT ROBERT MICHAEL & PEGGY	1 \$	244.00
293225440010	8107 142ND AVE NW	MN	55303-7289	RAMSEY	MIETTINEN JOSEPH & TONAY F	1 \$	244.00
293225440009	8055 142ND AVE NW	MN	55303-7285	RAMSEY	KEPRIOS-TURNER KERRI	1 \$	244.00
293225410015	14311 ARMSTRONG BLVD NW	MN	55303-7282	RAMSEY	NOVAK JAMES R	1 \$	244.00
283225330013	7884 142ND AVE NW	MN	55303-7269	RAMSEY	WRIGHT WILLIAM F & NANCY A	1 \$	244.00
283225330010	7974 142ND AVE NW	MN	55303-7271	RAMSEY	BARNIER ELAINE	1 \$	244.00
283225330002	7959 142ND AVE NW	MN	55303-7272	RAMSEY	THOMPSON CLAYTON	1 \$	244.00
283225330001	8005 142ND AVE NW	MN	55303-7274	RAMSEY	LEONHARDT MARJORIE	1 \$	244.00
293225410017	8144 144TH AVE NW	MN	55303-7286	RAMSEY	WILL STEVEN J	1 \$	244.00
283225330006	14275 ALPACA ST NW	MN	55303-7267	RAMSEY	DIRKMAN DAVID J	1 \$	244.00
293225410016	8150 144TH AVE NW	MN	55303-7286	RAMSEY	RICHTER LEON & KATHRYN	1 \$	244.00
293225410011	8121 144TH AVE NW	MN	55303-7287	RAMSEY	FETTERER IDA	1 \$	244.00
293225410013	14401 ARMSTRONG BLVD NW	MN	55303-7284	RAMSEY	PEDERSON LISA M	1 \$	244.00
293225440003	14227 ARMSTRONG BLVD NW	MN	55303-7282	RAMSEY	ERICKSON BRUCE A & BRENDA M	1 \$	244.00
283225330005	14290 ALPACA ST NW	MN	55303-7268	RAMSEY	PREGLER ANDREW & JOANN M	1 \$	244.00
283225330003	7929 142ND AVE NW	MN	55303-7272	RAMSEY	JOHNSON TRUSTEE JANICE & JOHNSON TRUSTEE LARRY	1 \$	244.00
293225410018	8112 144TH AVE NW	MN	55303-7286	RAMSEY	DENNIE KIMBERLY	1 \$	244.00
293225410009	8149 144TH AVE NW	MN	55303-7287	RAMSEY	PEARSON RODNEY & SANDRA	1 \$	244.00
293225410012	8101 144TH AVE NW	MN	55303-7287	RAMSEY	KENT DAVID	1 \$	244.00
283225330008	7807 142ND AVE NW	MN	55303-7270	RAMSEY	CLAUSEN JANYCE	1 \$	244.00
283225330011	7944 142ND AVE NW	MN	55303-7271	RAMSEY	BOEDIGHEIMER PAT D & SHERYL	1 \$	244.00
283225330009	7990 142ND AVE NW	MN	55303-7271	RAMSEY	LANDOWSKI THOMAS G	1 \$	244.00
293225440006	8100 142ND AVE NW	MN	55303-7288	RAMSEY	BECK RONALD	1 \$	244.00
293225440005	8134 142ND AVE NW	MN	55303-7288	RAMSEY	BECKMAN LEBURN W & CAROL A	1 \$	244.00
283225320016	14322 ALPACA ST NW	MN	55303-7266	RAMSEY	LUND LAWRENCE S	1 \$	244.00
293225410019	8100 144TH AVE NW	MN	55303-7286	RAMSEY	SCHOMMER DANIEL	1 \$	244.00
293225440001	8000 142ND AVE NW	MN	55303-7273	RAMSEY	OLSON TRUSTEE PATRICIA & OLSON TRUSTEE RONALD	1 \$	244.00
293225440007	8064 142ND AVE NW	MN	55303-7273	RAMSEY	SANNER JAMES E & DEBRA J	1 \$	244.00
293225410014	14331 ARMSTRONG BLVD NW	MN	55303-7282	RAMSEY	CHUBB DORIS	1 \$	244.00
283225330007	14239 ALPACA ST NW	MN	55303-7267	RAMSEY	DECKER RODNEY N & MICHELLE L	1 \$	244.00
283225330012	7900 142ND AVE NW	MN	55303-7271	RAMSEY	BERHOW MERWIN J & MILLER L	1 \$	244.00
293225440008	8044 142ND AVE NW	MN	55303-7273	RAMSEY	MACIVER MITCHELL R & DIANE	1 \$	244.00
293225410010	8133 144TH AVE NW	MN	55303-7287	RAMSEY		1 \$	244.00
					<b>TOTAL</b>	<b>39 \$</b>	<b>9,516.00</b>



**Map 10a**  
**MSA Streets (Xkimo Street)**  
**IP 11-04**



This map has been compiled using information gathered from various governmental offices and is provided for informational purposes only. It is not intended for use as a legal document. The City of Ramsey is not responsible for any errors or omissions that may appear on this map. The City does not represent that the GIS data can be used for exact measurement of distance, width or area. The City of Ramsey is not responsible for any errors or omissions that may appear on this map. The City of Ramsey is not responsible for any errors or omissions that may appear on this map. The City of Ramsey is not responsible for any errors or omissions that may appear on this map.



<u>ANOKA COUNTY PID</u>	<u>PROPERTY ADDRESS</u>	<u>STATE</u>	<u>ZIP</u>	<u>CITY</u>	<u>OWNER</u>	<u>SHARE</u>	<u>EST. ASSESSMENT</u>
253225430054	14265 XKIMO ST NW	MN	55303-5659	RAMSEY	BORCHERT JULIE	1 \$	183.00
253225430072	14245 SAINT FRANCIS BLVD NW	MN	55303-6133	RAMSEY	BSW PROPERTIES	1 \$	183.00
253225310011	14350 XKIMO ST NW	MN	55303-5638	RAMSEY	HOLIDAY COMPANIES	1 \$	183.00
253225430071	14245 SAINT FRANCIS BLVD #105	MN	55303	RAMSEY	VILLAGE BANK	1 \$	183.00
253225430067	14245 SAINT FRANCIS BLVD #101	MN	55303	RAMSEY	VILLAGE BANK	1 \$	183.00
253225430068	14245 SAINT FRANCIS BLVD #102	MN	55303	RAMSEY	LANIGAN PROPERTIES LLC	1 \$	183.00
253225430053	14281 XKIMO ST NW	MN	55303-5659	RAMSEY	FIELDSETH PAUL G & LEA D	1 \$	183.00
253225430055	14249 XKIMO ST NW	MN	55303-5659	RAMSEY	FELDMAN STEVEN	1 \$	183.00
253225430056	14233 XKIMO ST NW	MN	55303-5659	RAMSEY	SENIOR WAYNE A	1 \$	183.00
253225430065		MN	55303	RAMSEY	RIVERS BEND HOLDINGS LLC	1 \$	183.00
253225430057	14217 XKIMO ST NW	MN	55303-5659	RAMSEY	ERICKSON NICHOLAS T	1 \$	183.00
253225430043	5195 142ND AVE NW	MN	55303-4699	RAMSEY	RAMSEY, CITY OF	1 \$	183.00
253225430058	14201 XKIMO ST NW	MN	55303-5659	RAMSEY	GAMAYUNOV VITALIY & ANNA	1 \$	183.00
253225430061		MN	55303	RAMSEY	RIVERS BEND HOLDINGS LLC	0 \$	-
253225430070	14245 SAINT FRANCIS BLVD #104	MN	55303	RAMSEY	VILLAGE BANK	1 \$	183.00
253225430069	14245 SAINT FRANCIS BLVD #103	MN	55303	RAMSEY	VILLAGE BANK	1 \$	183.00
253225340128		MN	55303	RAMSEY	PHOENIX ENTERPRISES LLC	1 \$	183.00
253225430060		MN	55303	RAMSEY	RIVERS BEND HOLDINGS LLC	1 \$	183.00
25322543CIC		MN	55303	RAMSEY		0 \$	-
					<b>TOTAL</b>	<b>17 \$</b>	<b>3,111.00</b>



<u>ANOKA COUNTY PID</u>	<u>PROPERTY ADDRESS</u>	<u>STATE</u>	<u>ZIP</u>	<u>CITY</u>	<u>PROPERTY OWNER</u>	<u>SHARE</u>	<u>EST. ASSESSMENT</u>
153225340011	6828 157TH LN NW	MIN	55303-6941	RAMSEY	SPILDE ROBERT D & SONJA K	1 \$	1,621.00
153225330003	6925 157TH LN NW	MIN	55303-6940	RAMSEY	SERMON ROBERT C & KAREN L	1 \$	1,621.00
153225340002	6950 157TH LN NW	MIN	55303-6939	RAMSEY	WARD ADAM	1 \$	1,621.00
153225340001	6975 157TH LN NW	MIN	55303-6940	RAMSEY	DELUCA CORY M	1 \$	1,621.00
153225340016	6901 157TH LN NW	MIN	55303-6940	RAMSEY	BLASKA JAMES AND DANIELLE	1 \$	1,621.00
153225340014	6801 157TH LN NW	MIN	55303-6942	RAMSEY	MCKUSICK DALE F & BARBARA	1 \$	1,621.00
153225430019	6740 157TH LN NW	MIN	55303-6943	RAMSEY	WELINSKI BENET D	1 \$	1,621.00
153225430015	6743 157TH LN NW	MIN	55303-6944	RAMSEY	STEENERSON DAVID A & B L	1 \$	1,621.00
153225340018	6914 157TH LN NW	MIN	55303-6939	RAMSEY	DACON LAURA LEE	1 \$	1,621.00
153225430017	6750 157TH LN NW	MIN	55303-6943	RAMSEY	SMITH CARROLL M & JAN M	1 \$	1,621.00
153225340015	6841 157TH LN NW	MIN	55303-6942	RAMSEY	ARNOLD ROBERT J & MARY L	1 \$	1,621.00
153225340017	6917 157TH LN NW	MIN	55303-6940	RAMSEY	ERICKSON BRENT G & SUSAN D	1 \$	1,621.00
153225330005	7040 157TH LN NW	MIN	55303-6937	RAMSEY	LISK VIOLET M	1 \$	1,621.00
153225330006	15739 RAMSEY BLVD NW	MIN	55303-6952	RAMSEY	BROMEN JOHN M & CYNTHIA M	1 \$	1,621.00
153225330007	7020 157TH LN NW	MIN	55303-6937	RAMSEY	DISCHINGER BRIAN	1 \$	1,621.00
153225330008	7000 157TH LN NW	MIN	55303-6937	RAMSEY	NOREEN KEITH D & CHERYL J	1 \$	1,621.00
153225430002	6741 157TH LN NW	MIN	55303-6944	RAMSEY	DARGIS LEVI	1 \$	1,621.00
					<b>TOTAL</b>	<b>17 \$</b>	<b>27,557.00</b>



Map 12  
Oak Run  
IP 11-06

Parcels  
Map12



0 100 200 Feet

This map has been compiled using information gathered from various governmental offices and is provided as a general guide only. The City does not warrant the accuracy of the information and is not liable for any errors or omissions. The City does not represent that the GIS data can be used for exact measurement of distance or length. The City of Ramsey is not responsible for the accuracy of this information. The City of Ramsey is not responsible for the accuracy of this information. The City of Ramsey is not responsible for the accuracy of this information. The City of Ramsey is not responsible for the accuracy of this information.



<u>ANOKA COUNTY PID</u>	<u>PROPERTY ADDRESS</u>	<u>STATE</u>	<u>ZIP</u>	<u>PROPERTY OWNER</u>	<u>SHARE</u>	<u>EST. ASSESSMENT</u>
153225120019	16337 COQUINA ST NW	MN	55303-3769	STEVENSON TIMOTHY	1	\$ 2,260.00
153225120016	16300 COQUINA ST NW	MN	55303-3770	HAUCK SCOTT V & LEANN M	1	\$ 2,260.00
153225120018	16427 COQUINA ST NW	MN	55303-3767	OLSON WARREN G	1	\$ 2,260.00
153225120020	16305 COQUINA ST NW	MN	55303-3769	GERBER NATHAN	1	\$ 2,260.00
153225120013	16334 COQUINA ST NW	MN	55303-3770	WEINHOLD STEVEN L & LAURA M	1	\$ 2,260.00
153225130024	16244 COQUINA ST NW	MN	55303-3759	MASICA WILLIAM V & MILDRED G	1	\$ 2,260.00
153225120009	16324 COQUINA ST NW	MN	55303-3770	EASTMAN ADAM L & REBECCA A	1	\$ 2,260.00
153225120017	16437 COQUINA ST NW	MN	55303-3767	LAMBRES BRIAN P & PAULA JEAN	1	\$ 2,260.00
153225120010	16438 COQUINA ST NW	MN	55303-3768	PAYEUR ERIK C B & MELANIE S	1	\$ 2,260.00
153225130023	16259 COQUINA ST NW	MN	55303-3771	BRENT BENJAMIN	1	\$ 2,260.00
153225130003	16213 COQUINA ST NW	MN	55303-3771	JURGENSEN GREGORY	1	\$ 2,260.00
153225130002	16208 COQUINA ST NW	MN	55303-3759	SPITZLEY PAUL B	1	\$ 2,260.00
153225130022		MN	55303	ROOT DOROTHY D	1	\$ 2,260.00
153225120012	16358 COQUINA ST NW	MN	55303-3770	KELLY BETH A	1	\$ 2,260.00
153225120011	16418 COQUINA ST NW	MN	55303-3768	GRASKE THOMAS M & SUSAN D	1	\$ 2,260.00
				<b>TOTAL</b>	<b>15</b>	<b>\$ 33,900.00</b>



**Map 14a**  
**Stanhope River Hills**  
**IP 11-06**

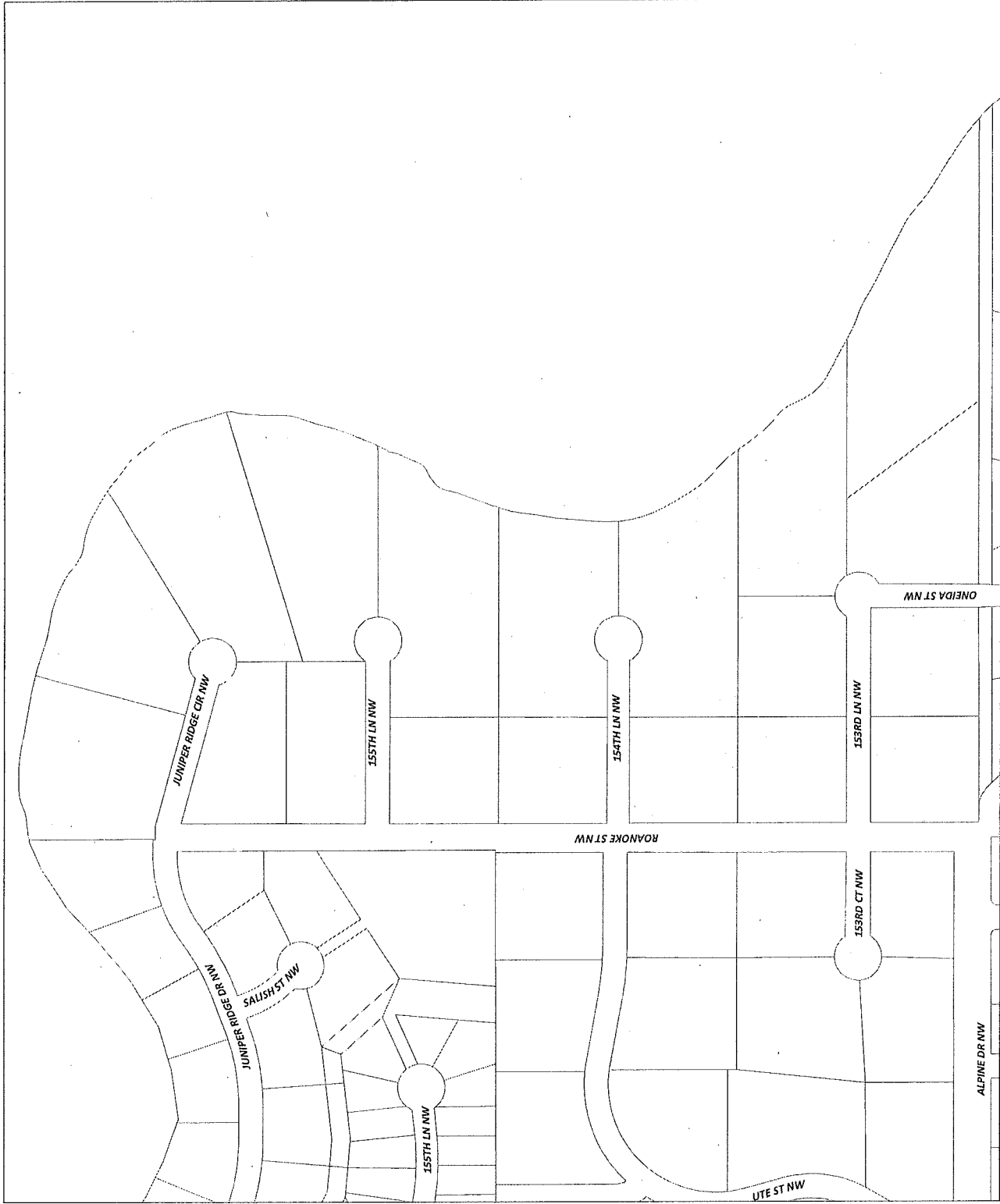
Map 14  
 Parcels



0 125 250 Feet

This map has been compiled using information gathered from various government offices and is provided for informational purposes only. It is not intended for use as a legal document. The City of Ramsey does not warrant the accuracy of the information shown on this map. The City does not represent that the GIS data can be used for exact measurements of distance or direction and precision in the absence of a professional survey. If any of a signature, a seal, or other contact information is required for any purpose, please contact the City of Ramsey at 763-437-1424.

The City of Ramsey disclaims any responsibility for liability for the accuracy of the information. It is not intended for use as a legal document. The City of Ramsey does not warrant the accuracy of the information shown on this map. The City does not represent that the GIS data can be used for exact measurements of distance or direction and precision in the absence of a professional survey. If any of a signature, a seal, or other contact information is required for any purpose, please contact the City of Ramsey at 763-437-1424.



ANOKA COUNTY PID	PROPERTY ADDRESS	STATE	ZIP	CITY	PROPERTY OWNER	SHARE	EST. ASSESSMENT
193224220006	4771 JUNIPER RIDGE CIR NW	MN	55303-4284	RAMSEY	NAHRING TRUSTEE MARIANNE & NAHRING TRUSTEE NORMAN	1	\$ 2,260.00
193224220007		MN	55303	RAMSEY	MILLER JOHNNY	1	\$ 2,260.00
193224220009	4760 JUNIPER RIDGE CIR NW	MN	55303-4280	RAMSEY	BERNING PAUL R & KIM M	1	\$ 2,260.00
193224220008	4720 JUNIPER RIDGE CIR NW	MN	55303-4280	RAMSEY	ERICKSON SCOTT S & MARY K	1	\$ 2,260.00
193224220012	4720 155TH LN NW	MN	55303-4285	RAMSEY	HANOVER RICHARD P	1	\$ 2,260.00
193224220013	4760 155TH LN NW	MN	55303-4285	RAMSEY	FRANZMAN BRADLEY C & SANDRA	1	\$ 2,260.00
193224230009	4721 153RD LN NW	MN	55303-4288	RAMSEY	PARKER MICHAEL D & KAREN M	1	\$ 2,260.00
193224230010	4681 153RD LN NW	MN	55303-4288	RAMSEY	BALDIUS JOSEPH & CAROLYN R	1	\$ 2,260.00
193224220015		MN	55303	RAMSEY	BRENNY LEONARD T & JANET	1	\$ 2,260.00
193224230006	4740 154TH LN NW	MN	55303-4286	RAMSEY	ERHART WILLIAM A & ELIZABETH M	1	\$ 2,260.00
193224230004	4781 154TH LN NW	MN	55303-4286	RAMSEY	LIND CRAIG	1	\$ 2,260.00
193224230012	4760 153RD LN NW	MN	55303-4287	RAMSEY	HUSER GARY L	1	\$ 2,260.00
193224230013	4720 153RD LN NW	MN	55303-4287	RAMSEY	EISINGER KELLY	1	\$ 2,260.00
193224230007	4780 154TH LN NW	MN	55303-4286	RAMSEY	BROWN KELLY	1	\$ 2,260.00
193224230008	4761 153RD LN NW	MN	55303-4288	RAMSEY	ALPER RICHARD E & GRETCHEN S	1	\$ 2,260.00
193224230005	4741 154TH LN NW	MN	55303-4286	RAMSEY	KOCH JAMES R & KATHLEEN M	1	\$ 2,260.00
193224230011	15321 ONEIDA ST NW	MN	55303-4289	RAMSEY	ERICKSON CHARLES B & KARLA J	1	\$ 2,260.00
193224220014	4721 155TH LN NW	MN	55303-4285	RAMSEY		1	\$ 2,260.00
					<b>TOTAL</b>	<b>18</b>	<b>\$ 40,680.00</b>



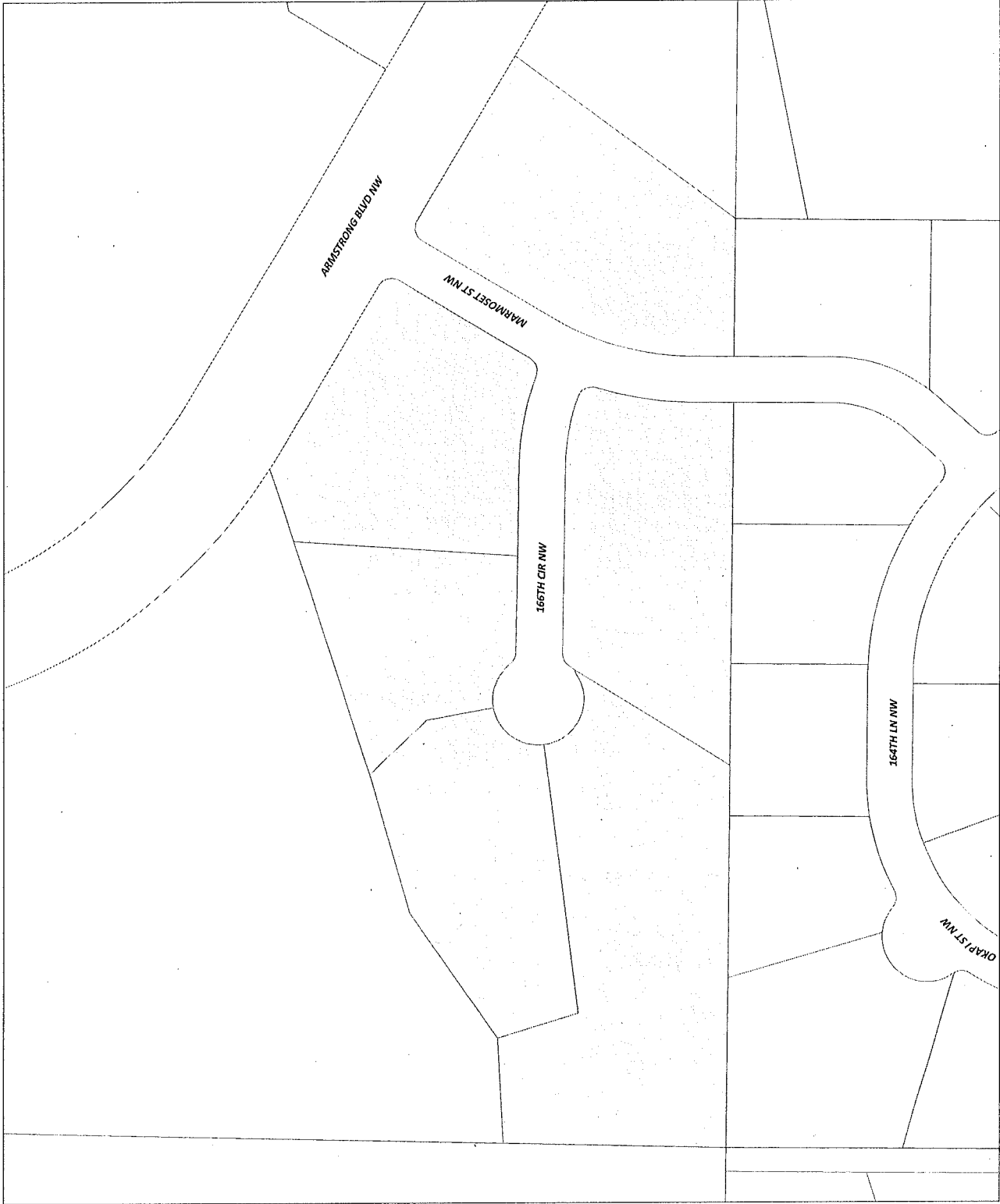
Map 14b  
Oakridge Estates  
IP 11-06

Map 14b  
Parcels



0 65 130 Feet

This map has been compiled using information gathered from various government offices and other sources. The City does not warrant the accuracy of the information shown on this map. The City does not represent that the GIS data can be used for exact measurement of distance or direction, and is not intended for use as a substitute for a survey. The City does not warrant the accuracy of the information shown on this map. The City does not represent that the GIS data can be used for exact measurement of distance or direction, and is not intended for use as a substitute for a survey. The City does not warrant the accuracy of the information shown on this map. The City does not represent that the GIS data can be used for exact measurement of distance or direction, and is not intended for use as a substitute for a survey.



<u>ANOKA COUNTY PID</u>	<u>PROPERTY ADDRESS</u>	<u>STATE</u>	<u>ZIP</u>	<u>CITY</u>	<u>OWNER</u>	<u>SHARE</u>	<u>EST. ASSESSMENT</u>
083225340001	8401 166TH CIR NW	MN	55303-3459	RAMSEY	DE MARS MICHAEL A & PENNY J	1	\$ 2,260.00
083225340004	8450 166TH CIR NW	MN	55303-3460	RAMSEY	BIRK CANDACE	1	\$ 2,260.00
083225340006	16501 MARMOSET ST NW	MN	55303-3415	RAMSEY	DVORAK SUZANNE	1	\$ 2,260.00
083225340005	8400 166TH CIR NW	MN	55303-3460	RAMSEY	HEDBERG TIMOTHY A & JUDITH A	1	\$ 2,260.00
083225340002	8425 166TH CIR NW	MN	55303-3459	RAMSEY	STROMBERG BONNIE	1	\$ 2,260.00
083225340003	8451 166TH CIR NW	MN	55303-3459	RAMSEY	JACOB KAREN M	1	\$ 2,260.00
					<b>TOTAL</b>	<b>6</b>	<b>\$ 13,560.00</b>