

9. WATER ELEMENT

Municipal Water Supply

In 2004 the City of Ramsey completed a Water Supply and Distribution plan as required by State Legislation adopted in 1993, which required public water suppliers to adopt plans to promote the efficient use of water. This plan prepared by consulting engineers Bolton & Menk, Inc. documented the water supply, demand and use characteristics of the existing municipal water system and projected future municipal water system needs. The plan also established a conservation plan and an emergency preparedness plan.

Recent growth and changes in development plans of the future community have prompted a need to update this study as part of the comprehensive plan. The water supply plan completed by Bolton Menk and Associates is incorporated to this Plan by reference. Figure 9-1 attached is the Water Storage and Distribution Improvements map (Figure ES-2 from the Bolton and Menk study) and Figure 9-2 attached is the Water Supply and Treatment Improvements map (Figure 5-1 from the Bolton and Menk study). In addition, there is a 2008 updated and Department of Natural Resources approved water supply plan.

The City of Ramsey will continue to explore opportunities for water conservation, including the recently adopted topsoil ordinance for new primary structures.

Wellhead Protection Plan

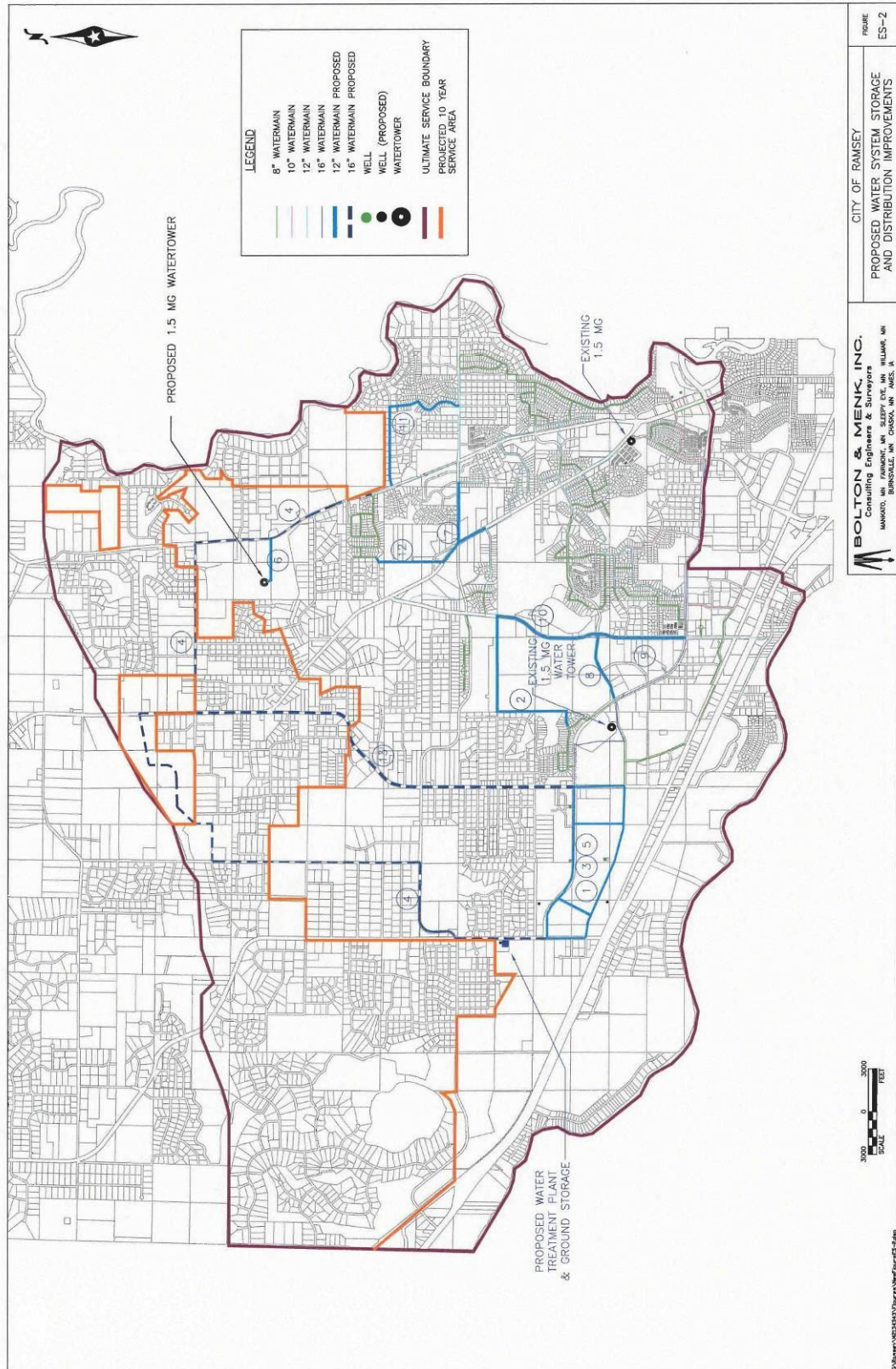
In 2009, the City of Ramsey completed a draft of a Wellhead Protection Plan as required by the Minnesota Department of Health. The purpose of this study is an effort to protect the city's water supply system from pollution by updating information regarding private wells, storage tanks, hazardous waste generators, etc. within close proximity to public wells. ~~In July of 2009, this draft was under review by adjacent jurisdiction~~The plan was reviewed and approved by the Minnesota Department of Health.

~~In addition, there is a 2008 updated and Department of Natural Resources approved water supply plan.~~

~~The City of Ramsey will continue to explore opportunities for water conservation, including the recently adopted topsoil ordinance for new primary structures.~~

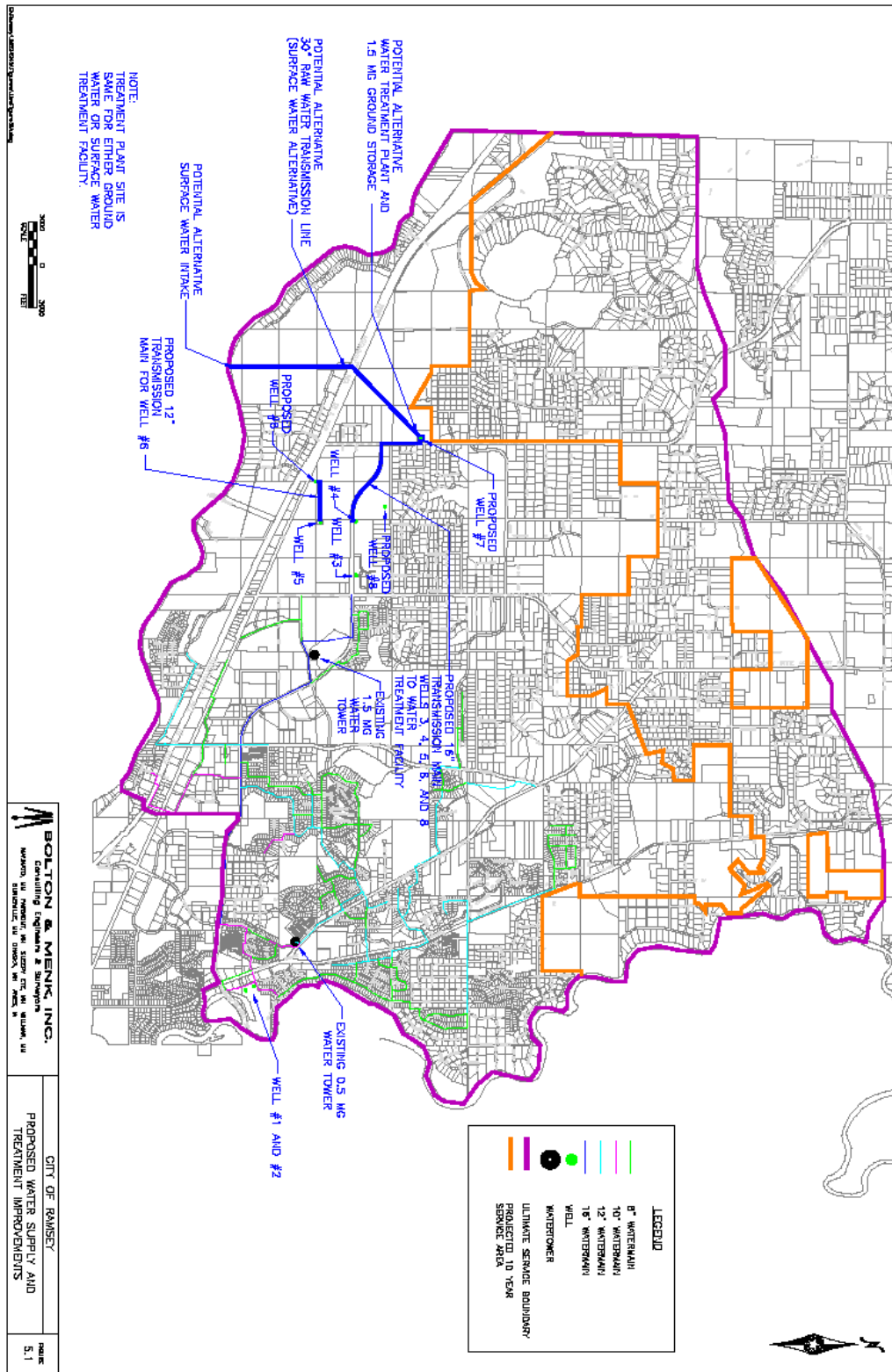
This page intentionally left blank

Figure 9-1 Water Storage and Distribution Improvements



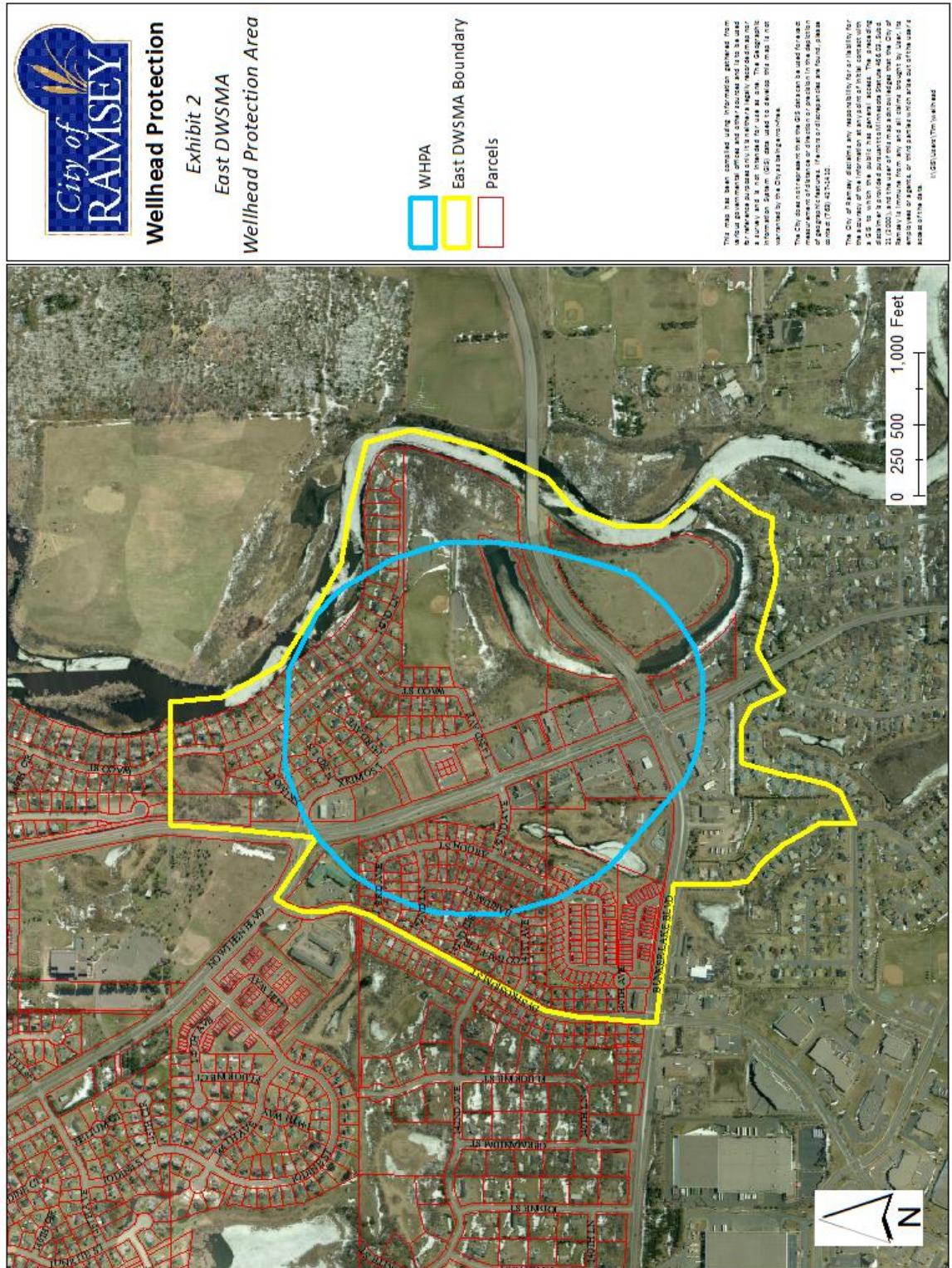
This page intentionally left blank

Figure 9-2 Water Supply and Treatment Improvements



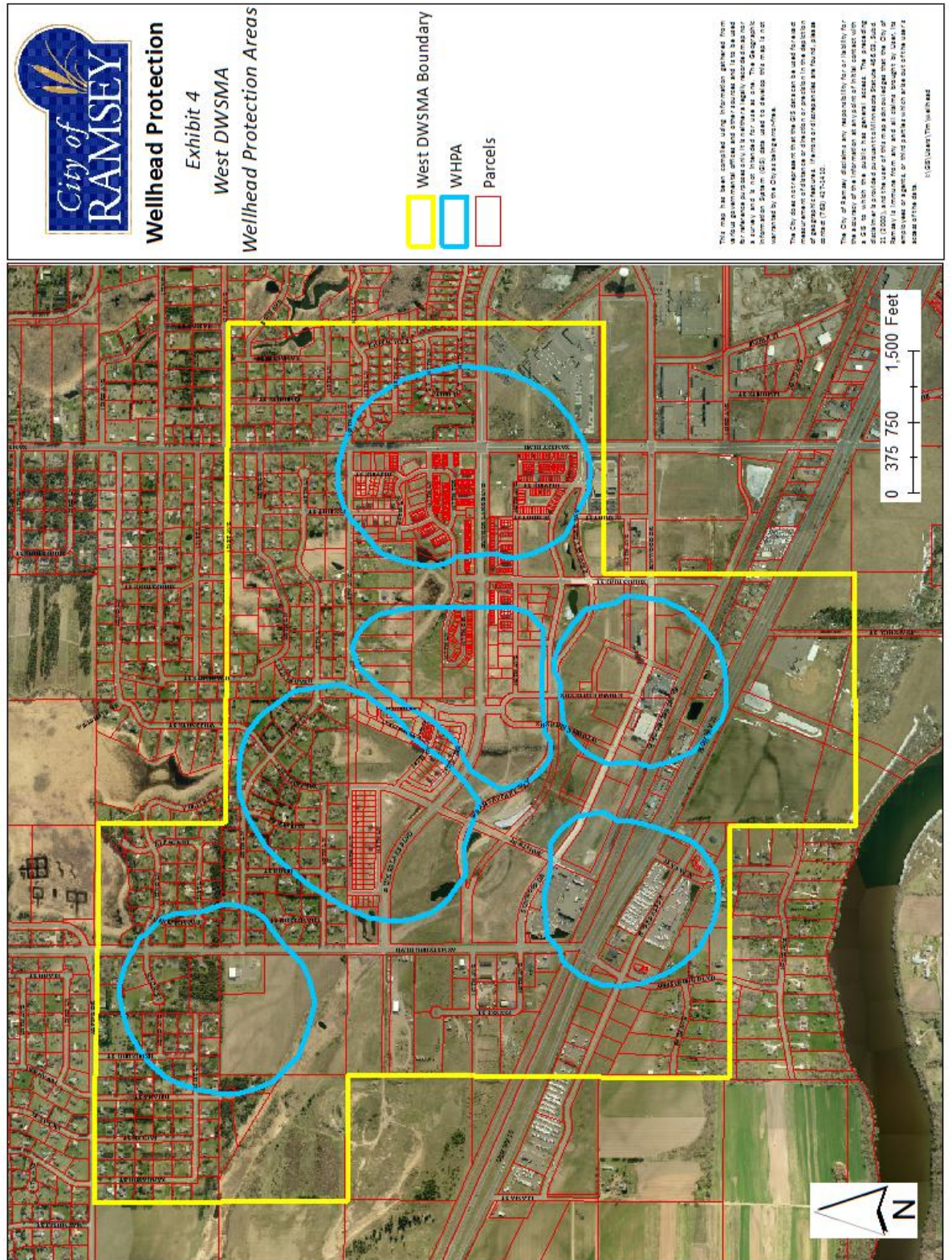
This page intentionally left blank

Figure 9-3: East DWSMA and WHPA (Wellhead Protection Plan)



This Page Intentionally Left Blank

Figure 9-4: East DWSMA and WHPA (Wellhead Protection Plan)



This Page Intentionally Left Blank