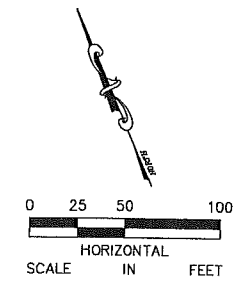
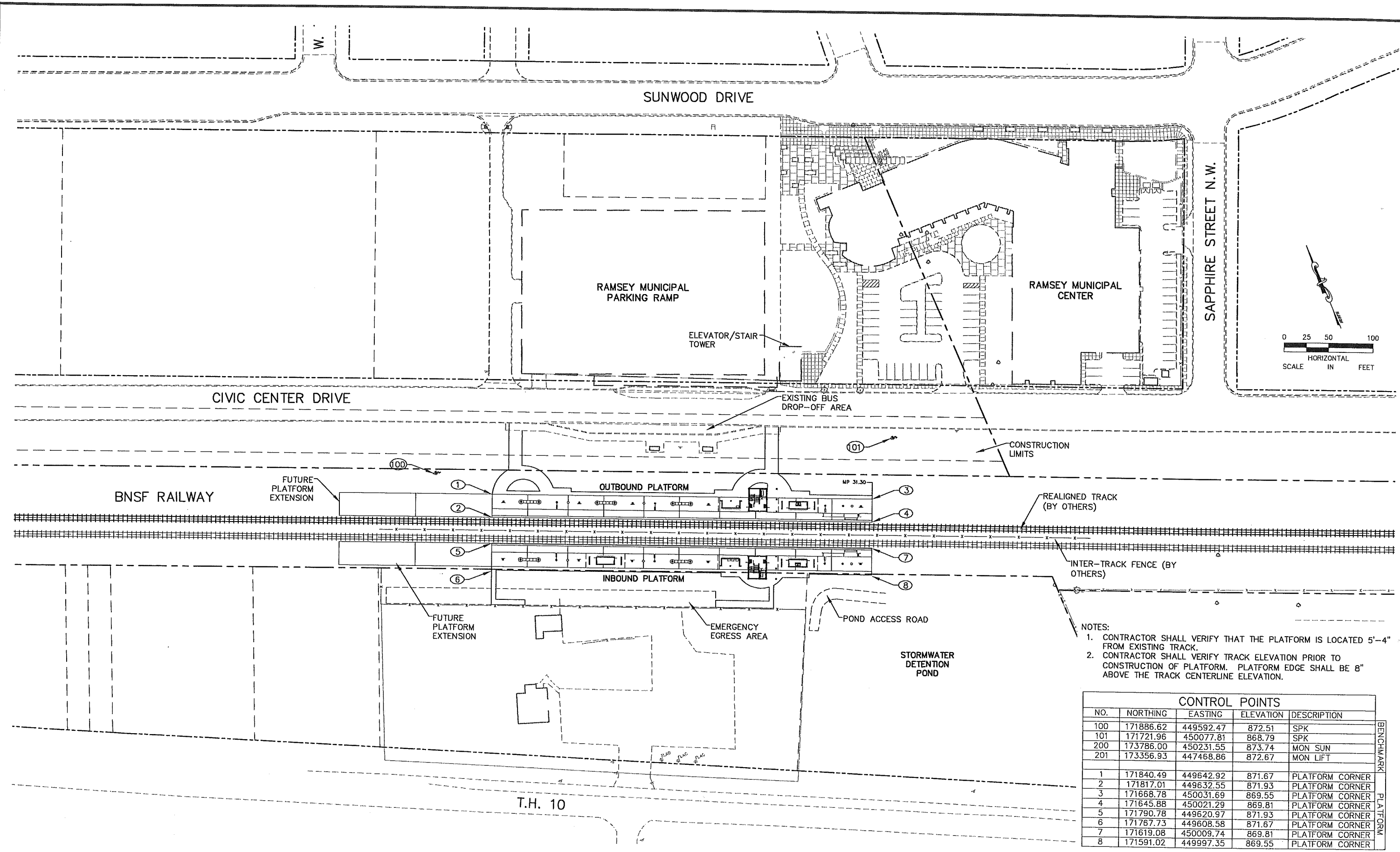


XREFS  
 RMSY-22-54\_BDR-BOT-519  
 RMSY-22-54\_BDR-EXP-519  
 RMSY-STA  
 RMSY-SIT

K:\TWC\_Transit\NORTHSTAR\NSTAR-Ramsey Station\CADD\DWG\PLAN SHEETS\RMSY\_CIV-KEYMAP.dwg April 08, 2010 - 10:05am



- NOTES:
- CONTRACTOR SHALL VERIFY THAT THE PLATFORM IS LOCATED 5'-4" FROM EXISTING TRACK.
  - CONTRACTOR SHALL VERIFY TRACK ELEVATION PRIOR TO CONSTRUCTION OF PLATFORM. PLATFORM EDGE SHALL BE 8" ABOVE THE TRACK CENTERLINE ELEVATION.

CONTROL POINTS				
NO.	NORTHING	EASTING	ELEVATION	DESCRIPTION
100	171886.62	449592.47	872.51	SPK
101	171721.96	450077.81	868.79	SPK
200	173786.00	450231.55	873.74	MON SUN
201	173356.93	447468.86	872.67	MON LIFT
<b>PLATFORM</b>				
1	171840.49	449642.92	871.67	PLATFORM CORNER
2	171817.01	449632.55	871.93	PLATFORM CORNER
3	171668.78	450031.69	869.55	PLATFORM CORNER
4	171645.88	450021.29	869.81	PLATFORM CORNER
5	171790.78	449620.97	871.93	PLATFORM CORNER
6	171767.73	449608.58	871.67	PLATFORM CORNER
7	171619.08	450009.74	869.81	PLATFORM CORNER
8	171591.02	449997.35	869.55	PLATFORM CORNER

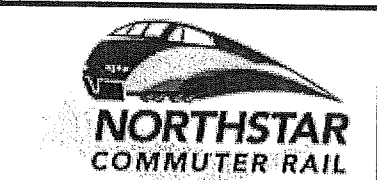
No.	Date	Revisions	App.

DRAWING NAME RMSY_CIV-KEYMAP.DWG	
DESIGNED BY:	LMR
DRAWN BY:	JDC
CHECKED BY:	PBD
DATE:	03/12/10
PROJECT NO.	16058001.3.200



I HEREBY CERTIFY THAT THIS PLAN, SPECIFICATION OR REPORT WAS PREPARED BY ME OR UNDER MY DIRECT SUPERVISION AND THAT I AM A DULY LICENSED PROFESSIONAL ENGINEER UNDER THE LAWS OF THE STATE OF MINNESOTA.

PAUL B. DANIELSON, PE  
 DATE: 03/12/10 MN LIC. NO. PE N01



ANOKA COUNTY REGIONAL RAIL AUTHORITY  
 NORTHSTAR CORRIDOR COMMUTER RAIL  
 RAMSEY STATION  
 RAMSEY, MINNESOTA

KEY MAP AND SURVEY CONTROL

STATION  
**RAMSEY**

SHEET NO.  
**C100**