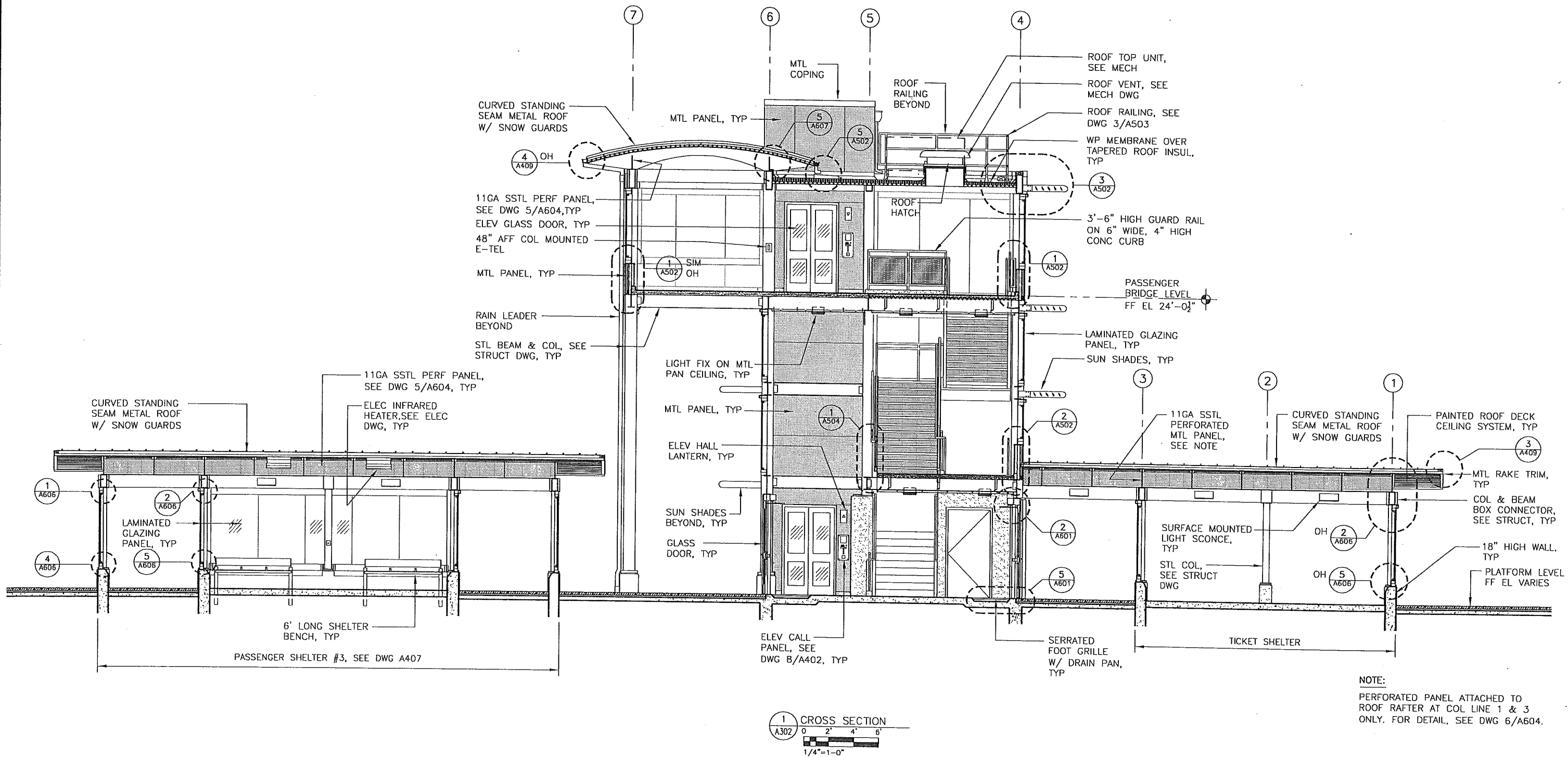


J:\TRACKWORK\6708\_NORTHSTAR\NorthStarCommuterRail\100% submittal\STATION\1000--RAMSEY\SHEET\A302.dwg April 01, 2010 - 11:34am



No.	Date	Revisions	App.	DRAWING NAME
				A302
				DESIGNED BY: RA
				DRAWN BY: RA
				CHECKED BY: PD
				DATE: 03-12-10
				PROJECT NO. PROJ NO

**Kimley-Horn and Associates, Inc.**

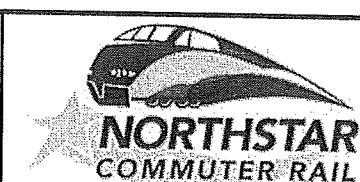
TRANSPORTATION

**AECOM**

AECOM USA, Inc.  
786 First Street, 17th Floor  
Baltimore, MD 21202  
T 410.837.1700 F 410.578.1306  
www.aecom.com

I HEREBY CERTIFY THAT THIS PLAN, SPECIFICATION OR REPORT WAS PREPARED BY ME OR UNDER MY DIRECT SUPERVISION AND THAT I AM A DULY LICENSED ARCHITECT UNDER THE LAWS OF THE STATE OF MINNESOTA.

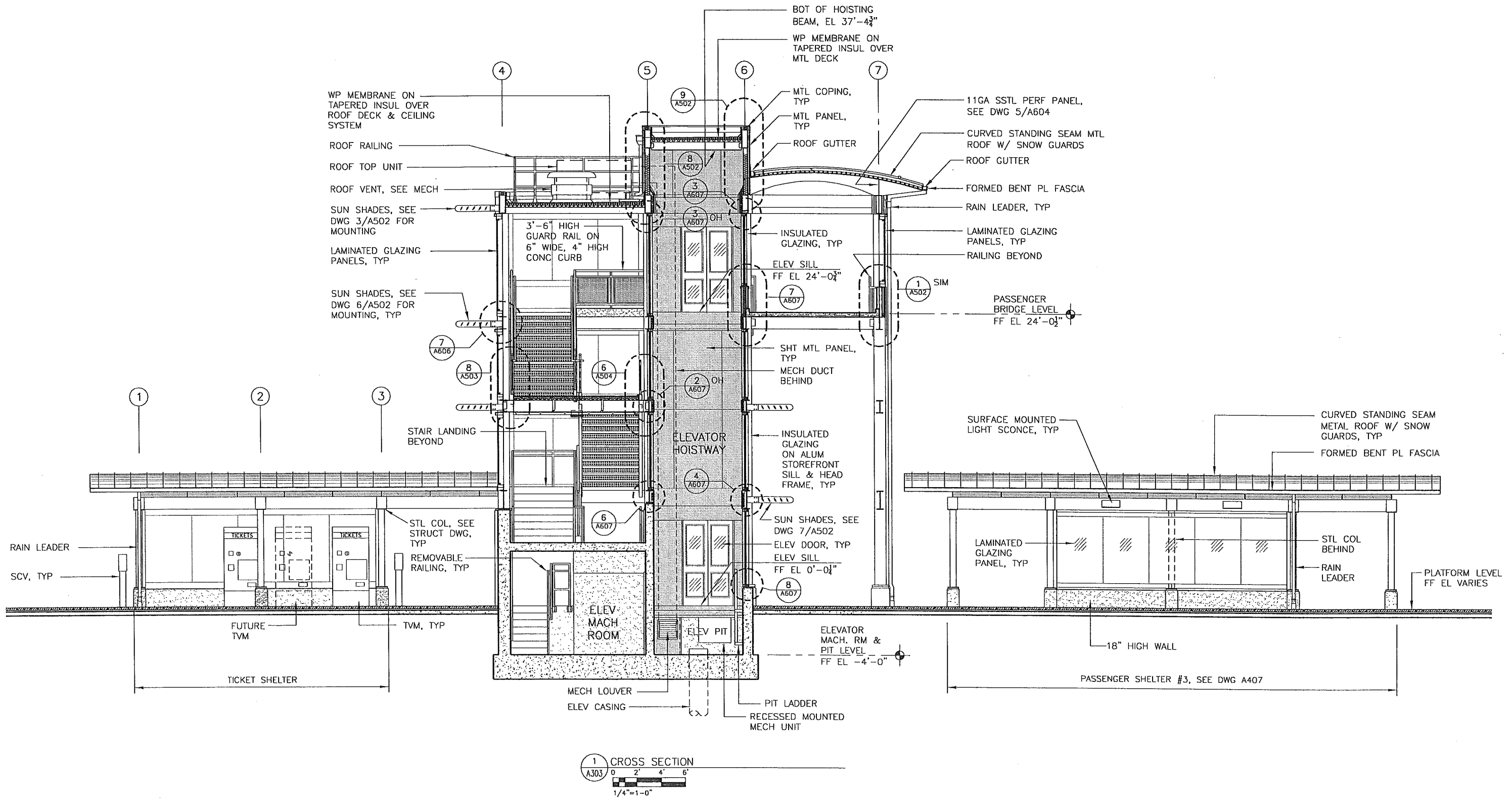
Kenneth W. Griffin  
DATE: 03-12-10 MN LIC. NO. 44872



ANOKA COUNTY REGIONAL RAIL AUTHORITY  
NORTHSTAR CORRIDOR COMMUTER RAIL  
RAMSEY STATION  
RAMSEY, MINNESOTA  
INBOUND  
ELEVATOR/STAIR TOWER, PASSENGER AND TICKET SHELTER  
CROSS SECTION

STATION	RAMSEY
SHEET NO.	A302

J:\TRACKWORK\6702\_NORTHSTAR\NorthStarCommuterRail\100% submit\1\STATION\000-RAMSEY\SHEET\A303.dwg April 01, 2010 - 1:24pm



1 CROSS SECTION  
A303  
0 2' 4' 6'  
1/4"=1'-0"

No.	Date	Revisions	App.

DRAWING NAME	A003
DESIGNED BY:	RA
DRAWN BY:	RA
CHECKED BY:	PD
DATE:	03-12-10
PROJECT NO.	PROJ NO

**Kimley-Horn  
and Associates, Inc.**

TRANSPORTATION

AECOM

AECOM USA, Inc.  
7 St. Paul Street, 17th Floor  
Baltimore, MD 21202  
T 410.637.1700 F 410.578.1305  
www.aecom.com

I HEREBY CERTIFY THAT THIS PLAN, SPECIFICATION OR REPORT WAS PREPARED BY ME OR UNDER MY DIRECT SUPERVISION AND THAT I AM A DULY LICENSED ARCHITECT UNDER THE LAWS OF THE STATE OF MINNESOTA.

Kenneth W. Griffin

DATE: 03-12-10 MN LIC. NO. 44872



ANOKA COUNTY REGIONAL RAIL AUTHORITY  
NORTHSTAR CORRIDOR COMMUTER RAIL  
RAMSEY STATION  
RAMSEY, MINNESOTA

INBOUND  
ELEVATOR /STAIR TOWER, PASSENGER AND TICKET SHELTER  
SECTION

STATION	RAMSEY
SHEET NO.	A303