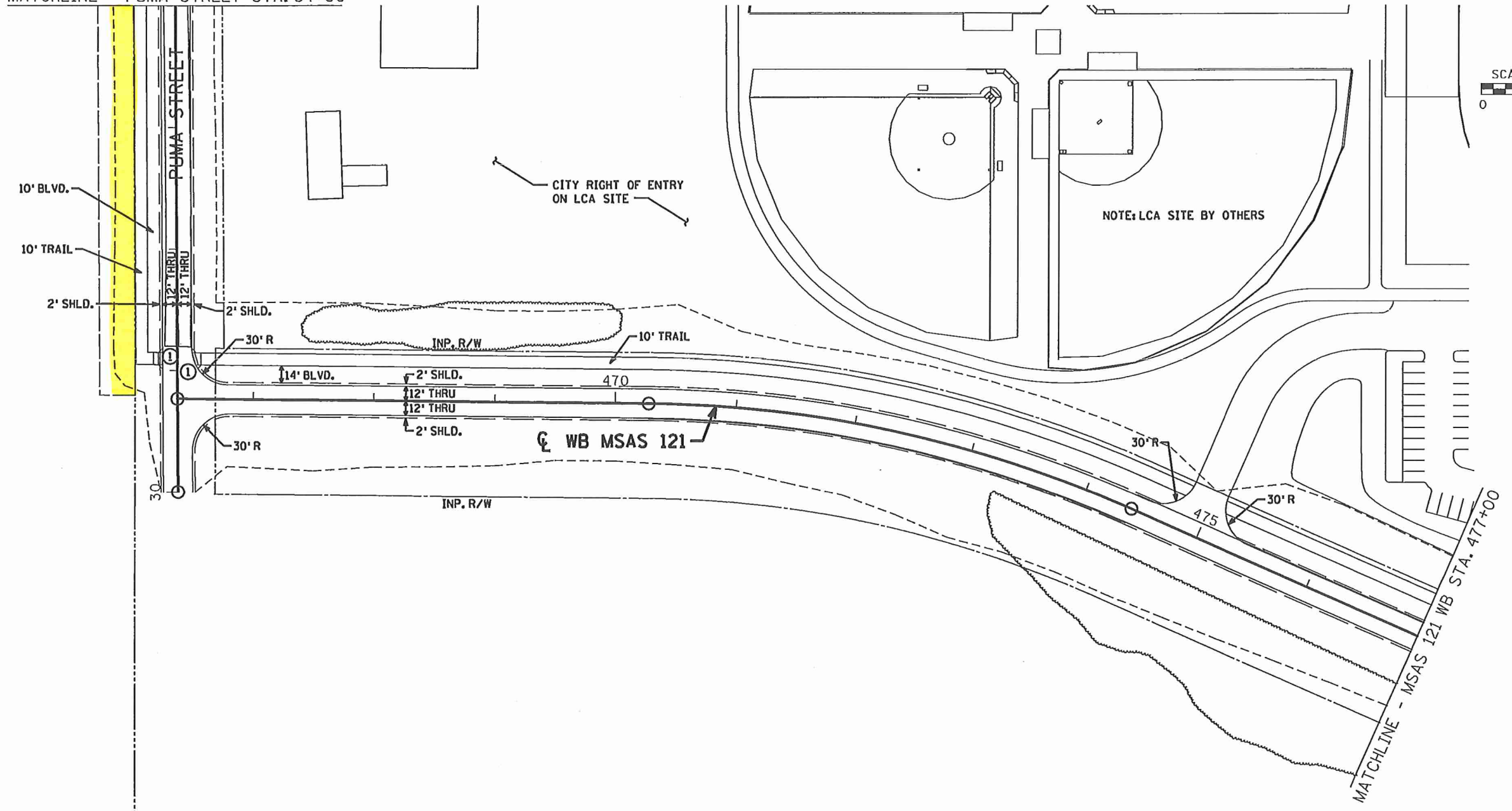


MATCHLINE - PUMA STREET STA. 34+00



**NOTES:**

- ① CONSTRUCT PEDESTRIAN CURB RAMP (SEE MISC. DETAILS)

**GENERAL NOTES:**

ALL DIMENSIONS ARE TO FACE OF CURB, OR EDGE OF PAVEMENT UNLESS OTHERWISE NOTED.

DATE: 3/14/2011 3:59:34 PM  
 PATH & FILENAME: K:\1973-00\Cad\Plan\csah83\_cp6.dgn

NO	DATE	BY	CHK	REVISIONS

Drawn By: \_\_\_\_\_  
 Designed By: \_\_\_\_\_  
 Checked By: \_\_\_\_\_  
 Approved By: \_\_\_\_\_

I HEREBY CERTIFY THAT THIS PLAN SHEET WAS PREPARED BY ME OR UNDER MY DIRECT SUPERVISION AND THAT I AM A DULY LICENSED PROFESSIONAL ENGINEER UNDER THE LAWS OF THE STATE OF MINNESOTA.

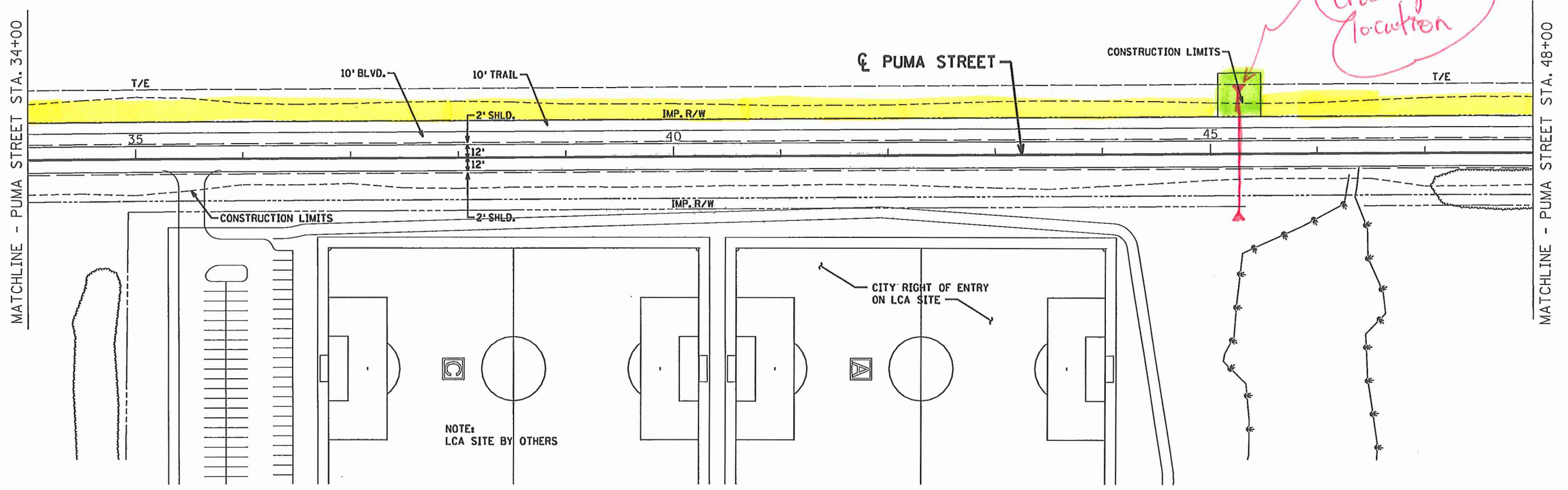
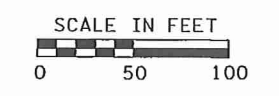
Licensed Professional Engineer, Jugo Hala P.E.  
 \$\$\$DATE\$\$\$ LIC NO: 42084

**CITY OF RAMSEY**  
 CSAH 83/116 & MSAS 121 CONSTRUCTION



CSAH 116 WB STA. 466+32.01 TO WB STA. 477+00  
**CONSTRUCTION PLAN**  
 SHEET 5 OF 9 SHEETS  
 S.A.P. 199-020-005, S.A.P. 199-121-001; C.P. 07-120

SHEET 68 OF 236 SHEETS



*Culvert Crossing Location*

NOTE:  
LCA SITE BY OTHERS

**NOTES:**

- ① CONSTRUCT PEDESTRIAN CURB RAMP (SEE MISC. DETAILS)
- ② 5' CURB TRANSITION FROM 6" HIGH TO 0" HIGH.
- ③ DEPRESS CONCRETE CURB, NO TRUNCATED DOMES

**GENERAL NOTES:**

ALL DIMENSIONS ARE TO FACE OF CURB, OR EDGE OF PAVEMENT UNLESS OTHERWISE NOTED.

DATE: 3/14/2011 3:59:44 PM  
PATH & FILENAME: K:\01973-00\Cad\Plan\csah83\_cp9.dgn

NO	DATE	BY	CHK	REVISIONS

Drawn By: \_\_\_\_\_  
 Designed By: \_\_\_\_\_  
 Checked By: \_\_\_\_\_  
 Approved By: \_\_\_\_\_

I HEREBY CERTIFY THAT THIS PLAN SHEET WAS PREPARED BY ME OR UNDER MY DIRECT SUPERVISION AND THAT I AM A DULY LICENSED PROFESSIONAL ENGINEER UNDER THE LAWS OF THE STATE OF MINNESOTA.

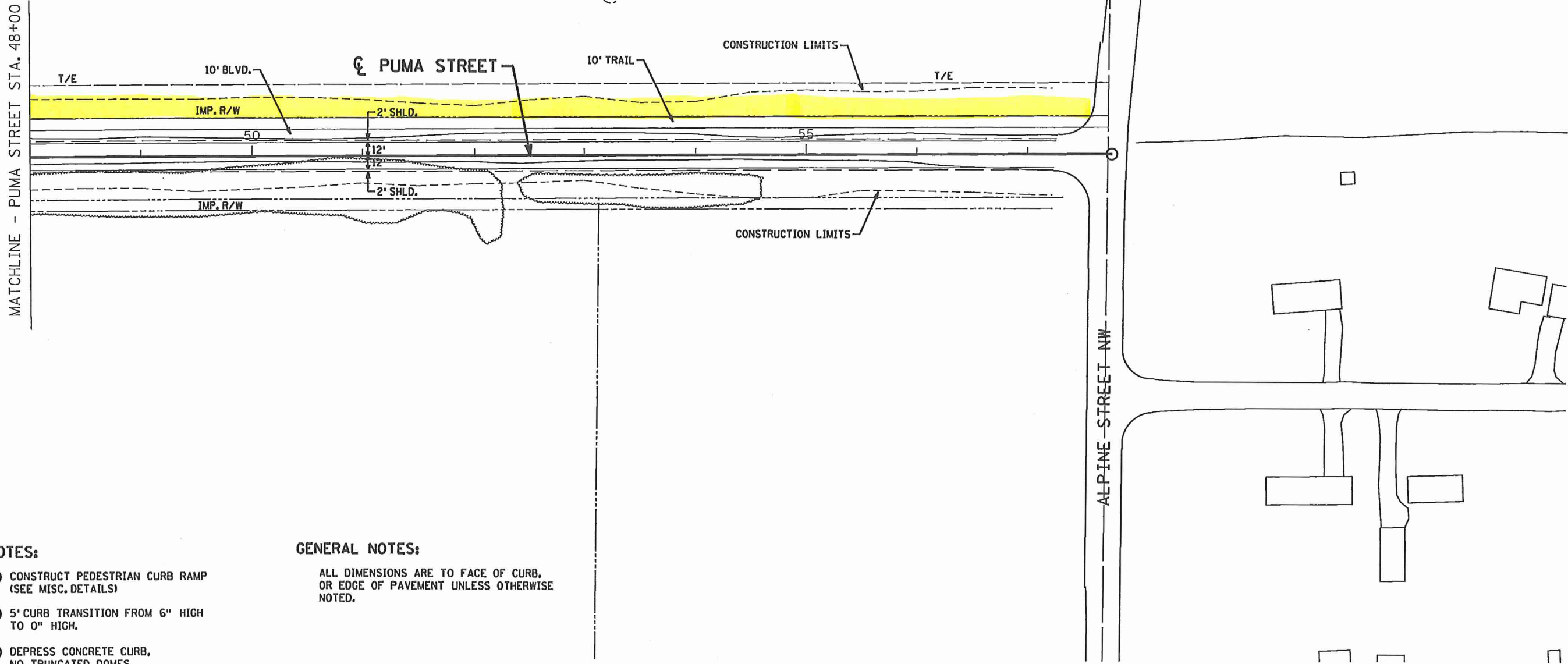
Licensed Professional Engineer, Jupe Hala P.E.  
 \$\$\$DATE\$\$\$ LIC NO: 42064

**CITY OF RAMSEY**  
 CSAH 83/116 & MSAS 121 CONSTRUCTION



PUMA ST NB STA. 34+00 TO NB STA. 48+00  
**CONSTRUCTION PLAN**  
 SHEET 8 OF 9 SHEETS  
 S.A.P. 199-020-005, S.A.P. 199-121-001; C.P. 07-120

SHEET 71 OF 236 SHEETS



**NOTES:**

- ① CONSTRUCT PEDESTRIAN CURB RAMP (SEE MISC. DETAILS)
- ② 5' CURB TRANSITION FROM 6" HIGH TO 0" HIGH.
- ③ DEPRESS CONCRETE CURB, NO TRUNCATED DOMES

**GENERAL NOTES:**

ALL DIMENSIONS ARE TO FACE OF CURB, OR EDGE OF PAVEMENT UNLESS OTHERWISE NOTED.

DATE: 3/14/2011 3:59:48 PM  
PATH & FILENAME: K:\01973-00\Cad\Plan\csah83\_cp10.dgn

NO	DATE	BY	CHK	REVISIONS

Drawn By:  
Designed By:  
Checked By:  
Approved By:

I HEREBY CERTIFY THAT THIS PLAN SHEET WAS PREPARED BY ME OR UNDER MY DIRECT SUPERVISION AND THAT I AM A DULY LICENSED PROFESSIONAL ENGINEER UNDER THE LAWS OF THE STATE OF MINNESOTA.

Licensed Professional Engineer, Jupo Hala P.E.

\$\$\$\$DATE\$\$\$ LIC NO: 42084

**CITY OF RAMSEY**  
CSAH 83/116 & MSAS 121 CONSTRUCTION



PUMA ST NB STA. 48+00 TO ALPINE DR  
**CONSTRUCTION PLAN**  
SHEET 9 OF 9 SHEETS  
S.A.P. 199-020-005, S.A.P. 199-121-001; C.P. 07-120

SHEET  
72  
OF  
236  
SHEETS