

FRONT ELEVATION
SCALE: 1/4" = 1'-0"

STEEL PANEL GARAGE DOORS

L-4 B-1 AMBER RIDGE 2ND
14523 ARGON ST N.W.

PLAN FOR:

DATE:
6-8-2011

SG. FT.
1248

**PAUL EMMERICH
CONSTRUCTION INC.**
612-819-3697

HOME PLANNING ASSOCIATES INC.

8329 CENTRAL AVENUE NE
SPRING LAKE PARK, MINNESOTA 55432
(763) 786-6069 Fax (763) 786-5860
SPRING LAKE PARK LUMBER BLDG

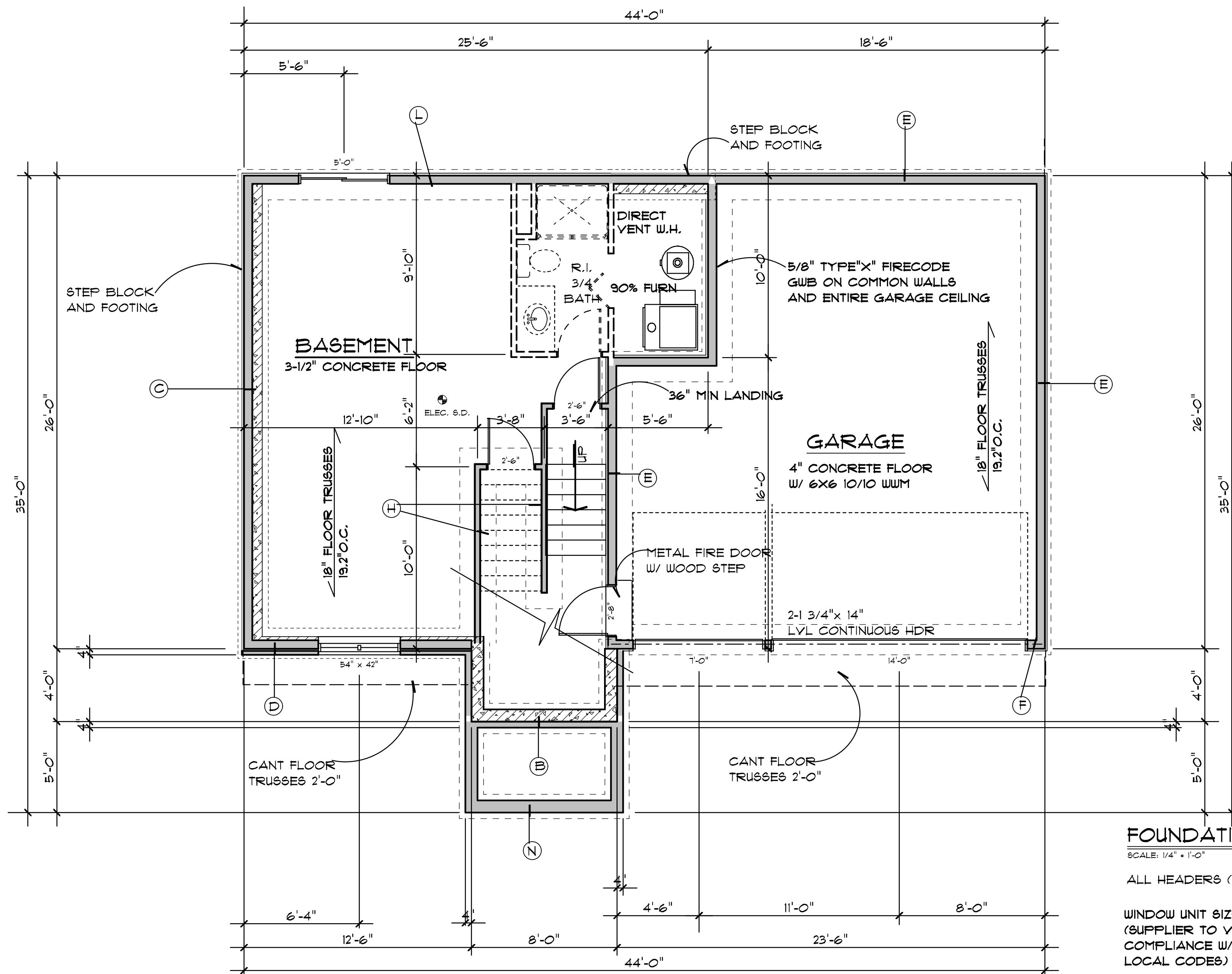
SHEET NUMBER
OF **5** ONE SHEETS

PLAN NUMBER
11036

NOTICE: THESE PLANS ARE DESIGNED EXCLUSIVELY FOR THE USE OF HOME PLANNING ASSOCIATES INC. AND PAUL EMMERICH. ANY REPRODUCTION OR OTHER USE IS STRICTLY PROHIBITED, WITHOUT THE EXPRESS WRITTEN CONSENT OF HOME PLANNING ASSOCIATES INC.

ALTHOUGH EVERY EFFORT HAS BEEN MADE IN DESIGNING AND PREPARING THESE PLANS AND CHECKING FOR ACCURACY, THE INSTALLER, OWNER, OR CONTRACTOR MUST VERIFY ALL DETAILS AND DIMENSIONS AND BE RESPONSIBLE FOR ANY CHANGES OR ADJUSTMENTS REQUIRED DURING CONSTRUCTION.

REVISIONS
6-22-11



- (B) 1c 8" CONCRETE BLOCK
4c 12" CONCRETE BLOCK
20x8 CONCRETE FOOTING
- (C) 2x6 STUDS- 16" O.C.
5c 12" CONCRETE BLOCK
20x8 CONCRETE FOOTING
- (D) 2x6 STUDS- 16" O.C.
1c 8" CONCRETE BLOCK
4c 12" CONCRETE BLOCK
20x8 CONCRETE FOOTING
- (E) 2x6 STUDS- 16" O.C.
1c 6" CONCRETE BLOCK
4c 8" CONCRETE BLOCK
16x8 CONCRETE FOOTING
- (F) 2x6 STUDS- 16" O.C.
1c 6" CONCRETE BLOCK
4c 12" CONCRETE BLOCK
20x8 CONCRETE FOOTING
- (H) 2x4 STUDS- 16" O.C.
1c 4" HALF HIGH
20x8 CONCRETE FOOTING
- (L) 2x6 STUDS- 16" O.C.
1c 6" HALF HIGH
5c 12" CONCRETE BLOCK
20x8 CONCRETE FOOTING
- (N) 4c 8" CONCRETE BLOCK
20x8 CONCRETE FOOTING

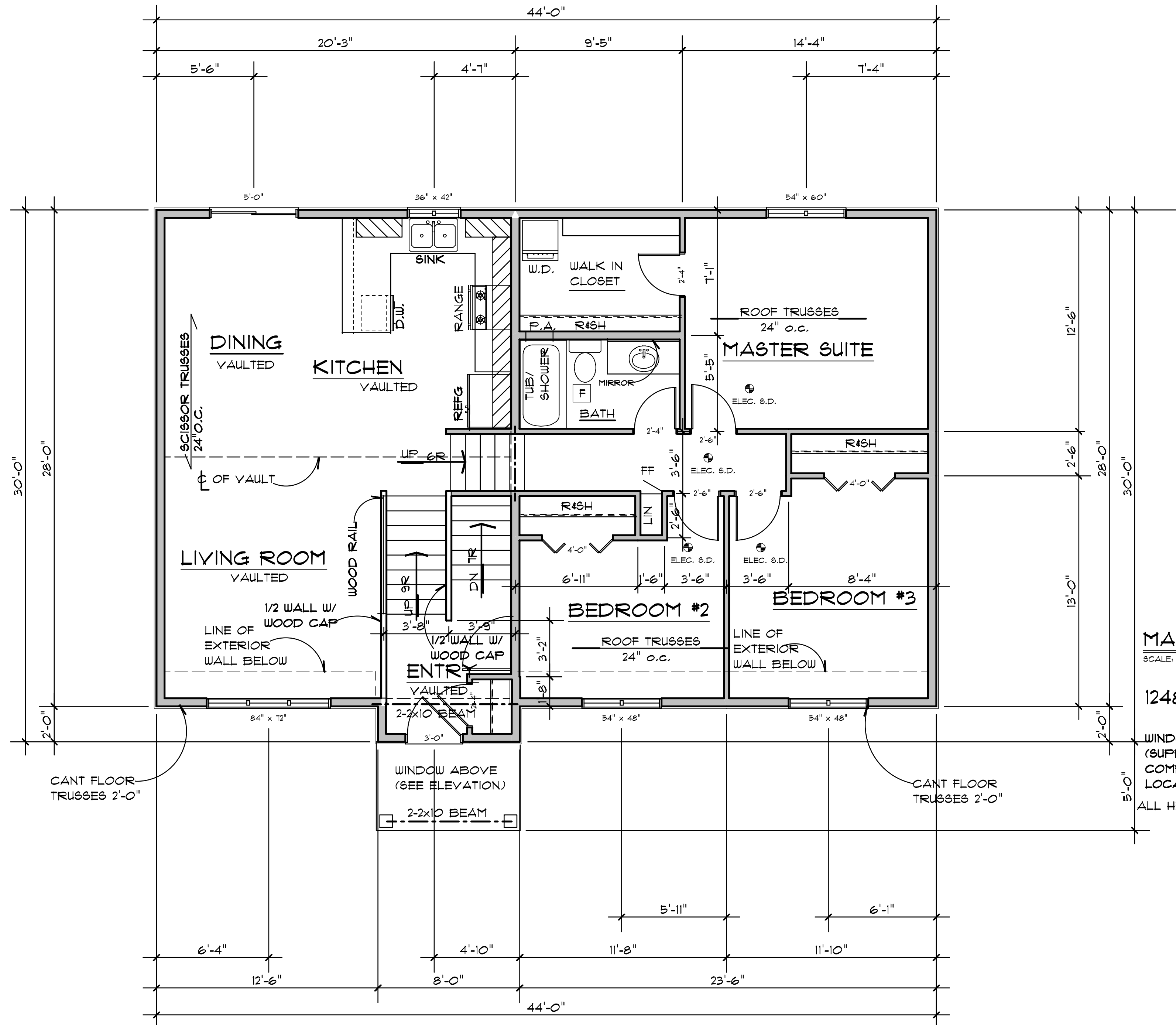
FOUNDATION PLAN
SCALE: 1/4" = 1'-0"

ALL HEADERS (2) 2x10 UNLESS NOTED

WINDOW UNIT SIZE SHOWN
(SUPPLIER TO VERIFY
COMPLIANCE W/ ALL
LOCAL CODES)

NOTE: CONTRACTOR TO VERIFY ALL
DIMENSIONS AND CONDITIONS IN THE FIELD
AND BE RESPONSIBLE FOR SAME

PLAN NUMBER:	11036
SHEET	2 OF 5



MAIN FLOOR PLAN

SCALE: 1/4" = 1'-0"

1248 SF

WINDOW UNIT SIZE SHOWN
 (SUPPLIER TO VERIFY
 COMPLIANCE W/ ALL
 LOCAL CODES)
 ALL HEADERS (2) 2x10 UNLESS NOTED

NOTE: CONTRACTOR TO VERIFY ALL
 DIMENSIONS AND CONDITIONS IN THE FIELD
 AND BE RESPONSIBLE FOR SAME

PLAN NUMBER: 11036

SHEET 3 OF 5

RADON VENT PIPE TERMINATED 12" MIN ABOVE SURFACE OF ROOF

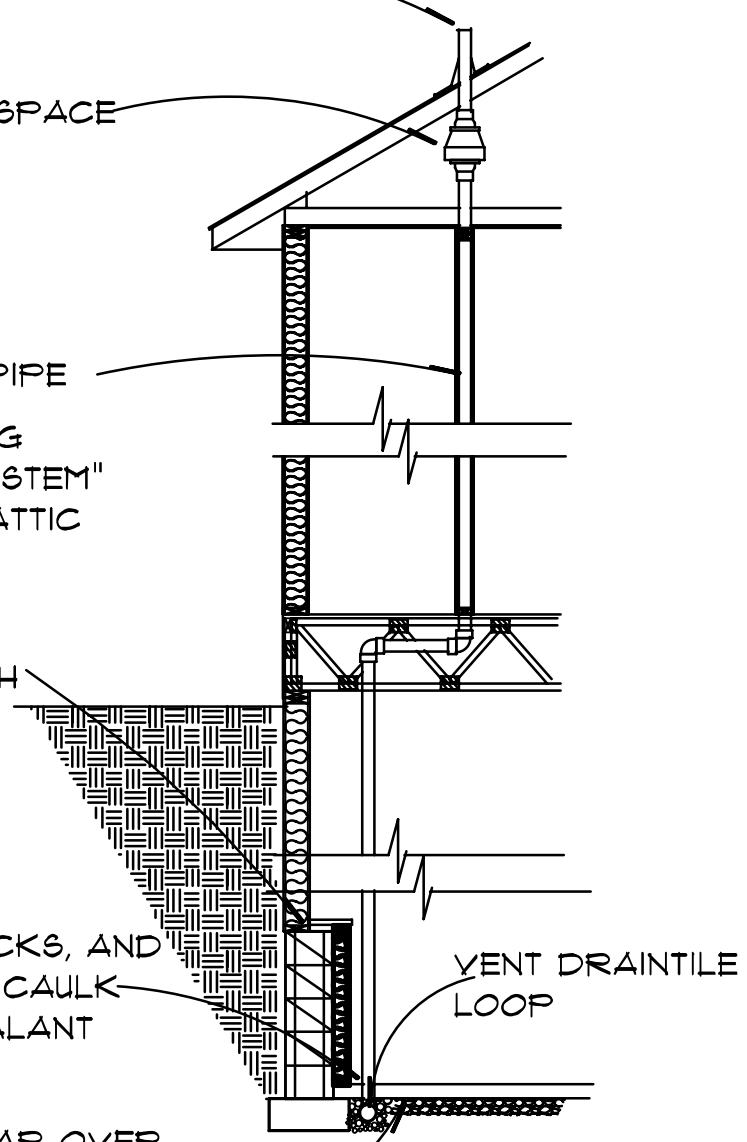
PROVIDE OUTLET AND SPACE FOR FUTURE FAN

MIN 3" GASTIGHT PVC PIPE
INSTALL LABEL READING "RADON REDUCTION SYSTEM" ON EACH FLOOR AND ATTIC

CAP BLOCK OR FILL TOP COURSE SOLID WITH MORTER

SEAL ALL JOINTS, CRACKS, AND OTHER OPENINGS WITH CAULK OR ELASTOMETRIC SEALANT

MIN 6MIL POLY W/ 12" LAP OVER 4" GAS PERMEABLE MATERIAL



RADON DETAIL
NO SCALE

ROOF VENTS PER CODE
240# ASPHALT SHINGLES
15# ASPHALT FELT
7/16 OXBOARD SHEATHING W/CLIPS
R-44 INSULATION
ROOF TRUSSES
-DESIGN BY SUPPLIER
POLY VAPOR BARRIER
VENT BAFFLES
5/8 GYP. BD.

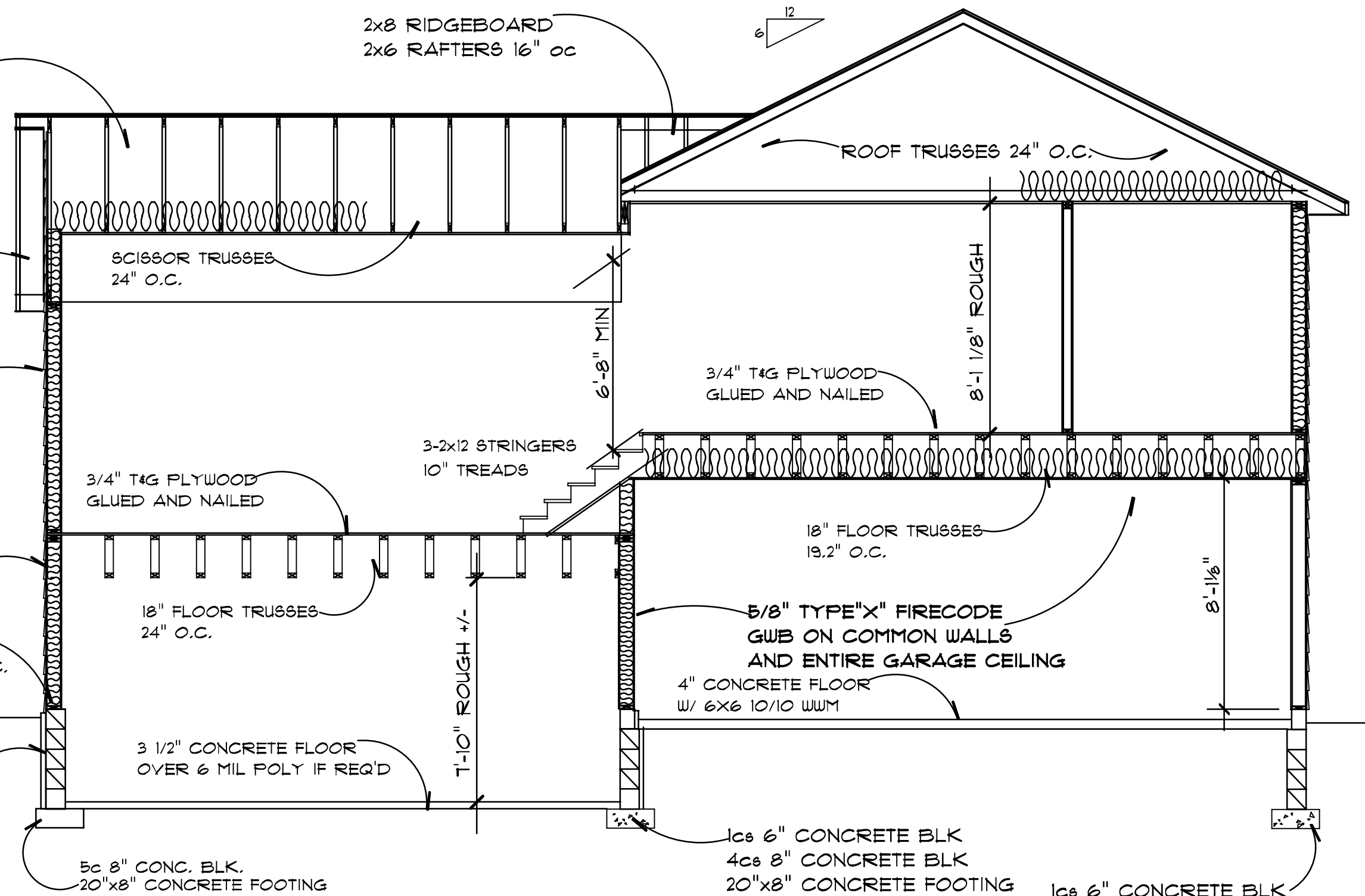
ALUMINUM SOFFIT & FACIA W/ CONT. VENTS

SIDING PER ELEVATIONS
HOUSE WRAP AS REQ'D
7/16" SHEATHING
2x6 STUDS 16" O.C.
R-19 F.G. BATT INSULATION
POLY VAPOR BARRIER
1/2" GYP. BD.
BRACING PER CODE

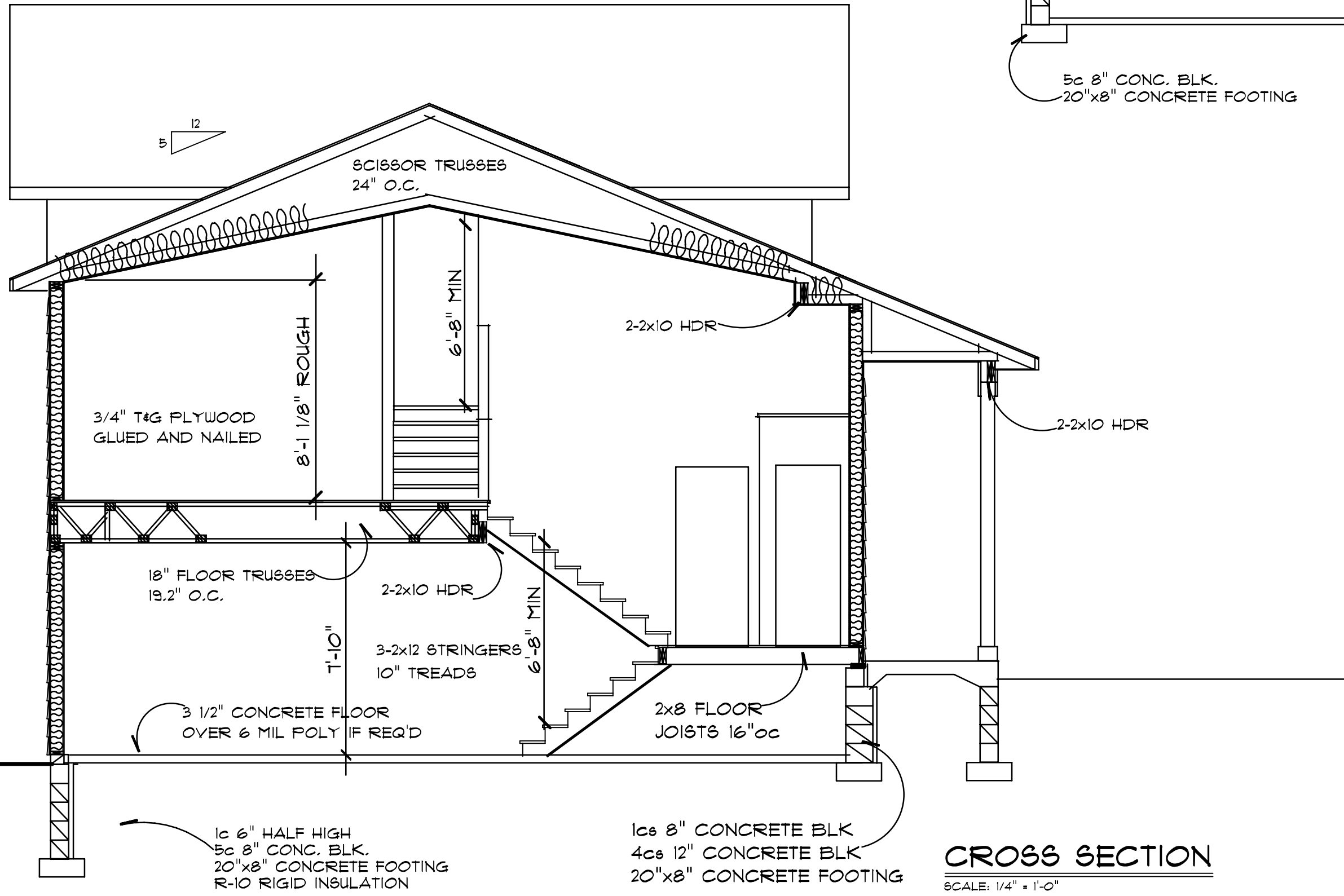
BALCON FRAME ENDWALL

2x6 TRT'D. SILL PLATE W/ SILL SEALER
1/2" ANCHOR BOLTS 6'-0" O.C. 1'-0" FROM PLATE ENDS

1 1/2" FOAM INSUL.



CROSS SECTION
SCALE: 1/4" = 1'-0"



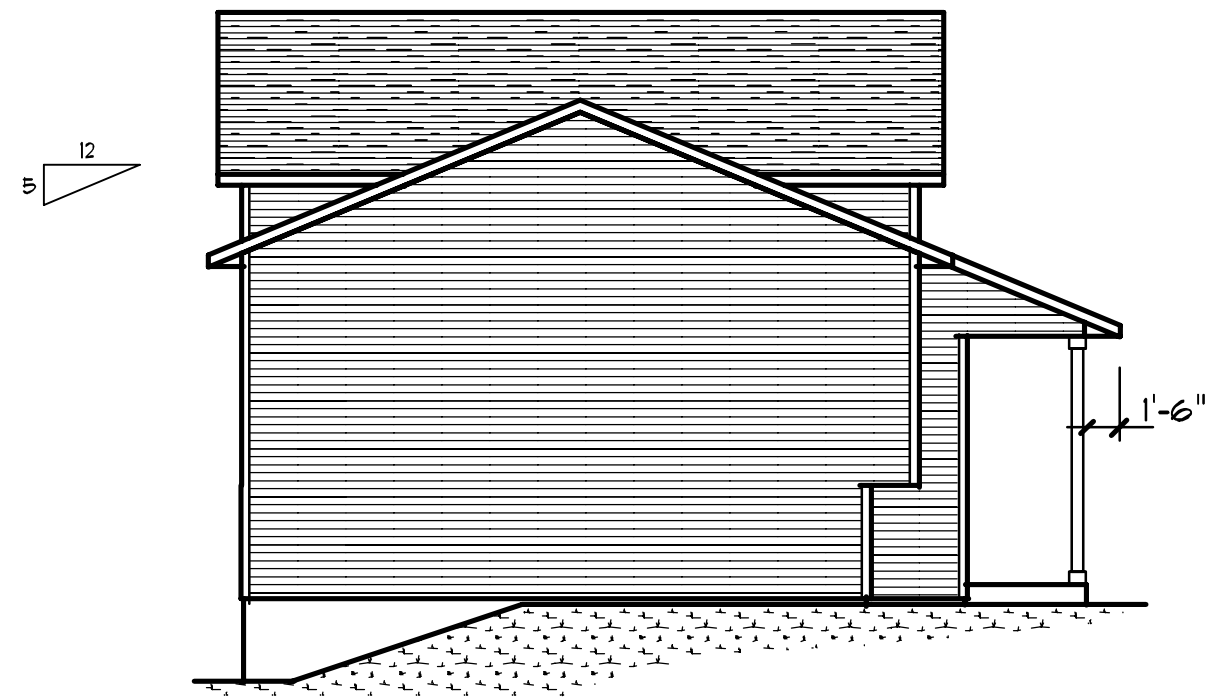
CROSS SECTION
SCALE: 1/4" = 1'-0"

1cs 6" CONCRETE BLK
4cs 8" CONCRETE BLK
20"x8" CONCRETE FOOTING

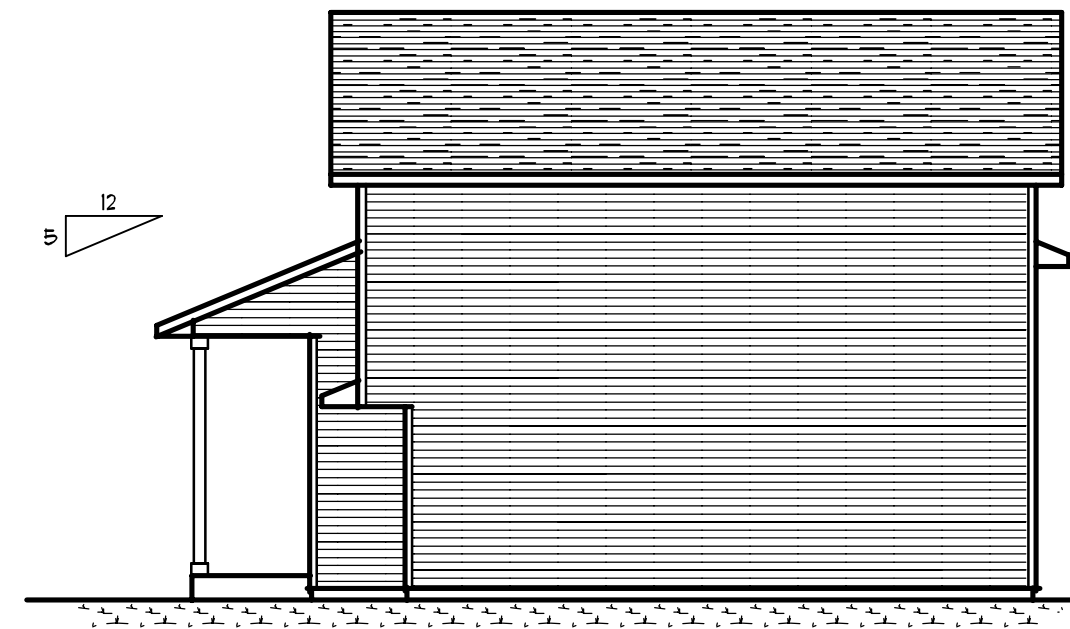
PLAN NUMBER: 11036

NOTE: CONTRACTOR TO VERIFY ALL DIMENSIONS AND CONDITIONS IN THE FIELD AND BE RESPONSIBLE FOR SAME

SHEET 4 OF 5



LEFT ELEVATION
SCALE: 1/8" = 1'-0"



RIGHT ELEVATION
SCALE: 1/8" = 1'-0"

240# ASPHALT SHINGLES
DBL 5" LAP
VINYL SIDING



REAR ELEVATION
SCALE: 1/8" = 1'-0"

NOTE: CONTRACTOR TO VERIFY ALL
DIMENSIONS AND CONDITIONS IN THE FIELD
AND BE RESPONSIBLE FOR SAME