

City of Ramsey
Agenda
City Council Work Session
Tuesday November 1, 2011
5:30 p.m.
Lake Itasca Room 7550 Sunwood Drive NW

- 1. Call to Order**
- 2. Topics for Discussion**
 1. Snowmobiling in Ramsey
 2. Discuss Utility Easement Resolution
 3. 2012 General Fund Levy & Budget
- 3. Future Topics for Discussion - *See Attached Calendar***
 1. Review Future Topics/Calendar
- 4. Mayor/Council/Staff Input**
- 5. Adjournment**

CC Work Session

2. 1.

Meeting Date: 11/01/2011

By: Jim Way, Police

Title:

Snowmobiling in Ramsey

Background:

Review with Council the 2010-2011 snowmobile season and talk about the upcoming snowmobile season. Individual Council members may have been contacted by citizens in regard to snowmobiling and we will discuss any comments or concerns.

Funding Source:

None

Council Action:

Based on discussion

Form Review

Inbox
Kurt Ulrich

Reviewed By
Kurt Ulrich
Form Started By: Jim Way

Date
10/19/2011 10:08 AM
Started On: 10/05/2011 02:52 PM

Final Approval Date: 10/19/2011

CC Work Session

2. 2.

Meeting Date: 11/01/2011

By: Jo Thieling, Administrative Services

Title:

Discuss Utility Easement Resolution

Background:

As Council is aware, utilities have an obligation to manage rights-of-way and easements, including removing trees, for safety and operational reasons to ensure continued reliable service. The City has entered into franchise agreements with each utility company to allow them to utilize the City's rights-of-way.

Residents and Ramsey officials have expressed concern over current practices in regard to the management of the rights-of-way and easements. Therefore, staff has drafted a resolution (attached) for Council consideration which spells out more what is requested of each utility doing business in Ramsey.

Recommendation:

The attached resolution, if approved by Council, would be forwarded to each utility doing business in the community.

Funding Source:

N/A

Council Action:

Based upon discussion.

Attachments

Utility Easement Resolution

Letter re 115kV Transmission Line

115kV Transmission Line Project

Form Review

Inbox	Reviewed By	Date
Kurt Ulrich	Kurt Ulrich	10/27/2011 03:17 PM
Jo Thieling (Originator)	Jo Thieling	10/27/2011 03:21 PM
Kurt Ulrich	Jo Thieling	10/27/2011 03:22 PM
Form Started By: Jo Thieling		Started On: 10/24/2011 09:00 AM
	Final Approval Date: 10/27/2011	

Councilmember introduced the following resolution and moved for its adoption:

RESOLUTION #11-11-XXX

RESOLUTION REQUESTING CERTAIN PRACTICES OF ALL UTILITIES DOING BUSINESS IN THE CITY OF RAMSEY

WHEREAS, the City of Ramsey considers utilities to be an important and essential service to the community; and;

WHEREAS, utilities have an obligation to manage rights-of-way and easements, including removing trees, for safety and operational reasons to ensure continued reliable service; and

WHEREAS, the City has entered into franchise agreements with each utility company to allow the company to utilize the City's rights-of-way to provide service to its residents and to support the regional system; and

WHEREAS, utilities make use of both public and private easements throughout the community; and

WHEREAS, the City has an interest in protecting the health, safety, welfare, and the value of property for its residents; and

WHEREAS, the City also has an interest in protecting the natural environment for the benefit of all; and

WHEREAS, residents and Ramsey officials have expressed concern over current practices in regard to the management of the rights-of-way and easements.

NOW THEREFORE, BE IT RESOLVED BY THE CITY COUNCIL OF THE CITY OF RAMSEY, ANOKA COUNTY, STATE OF MINNESOTA, as follows:

- 1) That the City of Ramsey does hereby state and request of all utilities doing business in the City of Ramsey that:
 - a) tree trimming and removal be minimized as much as possible in order to preserve this valuable resource for the community; and
 - b) proper survey verifications be done, to ensure that tree trimming and removal by contractors is not occurring outside of the utility easement and/or right-of-way; and
 - c) notification and written permission be received from all property owners prior to the application of any pesticide or herbicide; and
 - d) personal property damage be minimized; and
 - e) for large scale tree clearance operations an environmental worksheet be completed; and

- f) fully disclose all potential public health and safety issues associated with any transmission line construction or right-of-way/easement clearance activity; and
- g) restore all habitat within the right-of-way/easement to a level consistent with surrounding habitat; and
- h) seek City approval for any major clearance project.

The motion for adoption of the foregoing resolution was duly seconded by Councilmember _____, and upon vote being taken thereon, the following voted in favor thereof:

and the following voted against the same:

and the following abstained:

and the following were absent:

Whereupon said resolution was declared duly passed and adopted by the Ramsey City Council this the ____ day of November 2011.

Mayor Bob Ramsey

ATTEST:

City Clerk Jo Ann M. Thieling

DATE

Public Utilities Commission
Attn: Matt Langan
121 7th Place E, Suite 350
St. Paul, MN 55101-2147

RE: Great River Energy Enterprise Park to Crooked Lake 115 kV Transmission Line
City of Ramsey Comments

Matt:

Thank you for the opportunity to comment on the proposed project. The City of Ramsey appreciates the efforts of Great River Energy and the Public Utilities Commission in supplying the City with consistent and reliable service well into the future. We look forward to continued collaboration as we look to achieve our future land use goals.

Consistent with our communication to Mark Strofus dated April 26, 2011, the City of Ramsey wishes to reiterate our desire to ensure that the location of the proposed transmission line be placed on the north side of Bunker Lake Boulevard as it crosses the Rum River through the City's Rivers Bend Park. Attached is a background memo explaining our findings to support such an alignment. We thank Great River Energy for taking into account our comments and revising the proposed alignment accordingly.

The City would also like to take this opportunity to comment on tree removal practices the City has been observing in recent projects. While we understand and appreciate the need and rights to remove trees for safety and operational reasons to ensure continued reliable service, we ask that tree removal be minimized as much as possible in order to preserve this valuable resource for the community. To this end, we ask that care be taken, and the proper survey verifications be done, to ensure that tree removal by your contractors is not occurring outside of the utility easement and/or right-of-way.

Also, there are a few, relatively minor suggestions the City hopes can be taken into account. First, the City would like to see any pole located just west of the Rum River on the south side of Bunker Lake Boulevard be located as easterly as possible to avoid conflicts with the existing commercial parcel located at 13939 Ramsey Blvd. NW. Secondly, the City supports the primary preferred route west of Saint Francis Boulevard that is located on the south side of Bunker Lake Boulevard as it minimizes conflicts with existing trails and infrastructure, including the existing radio tower. Next, the City would request and support an access connection or trail connecting McKinley Street to the Enterprise Park substation to ensure adequate public safety access in the event of an emergency.

Furthermore, the City, in order to avoid any potential construction conflicts, notes that Anoka County has begun a reconstruction project to widen and improve Bunker Lake Boulevard through the cities of Ramsey and Anoka.

Finally, the City of Ramsey would like to discuss Phase II of this project inclusive of our comments to this current Phase I. We understand that Phase II will ultimately connect to a new bulk substation in an area in Elk River to be determined in the future. We desire a route for Phase II that is complementary to our desire for visibility of, and the investment we've made in, our downtown development along Highway 10 (The COR) as well as our appreciation for providing reliable service to our planned, future employment areas along Highway 10.

Thank you for your opportunity to comment,

CITY OF RAMSEY

Tim Gladhill
Senior Planner

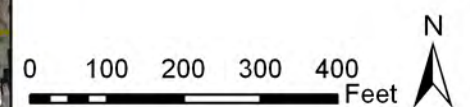
CC: Mayor
Councilmembers



GREAT RIVER ENERGY®

A Touchstone Energy® Cooperative

- Great River Energy
- Proposed Route
- Conceptual Alignment
- Conceptual Alternate Alignment
- Easement Area (70 ft)
- Existing Anoka Municipal Utility (AMU)
 - Distribution Substation
 - Transmission Substation
- Existing Xcel Energy (XE)
 - 115 kV AC Transmission
 - 69 kV Transmission Line
 - 115 kV Transmission Line

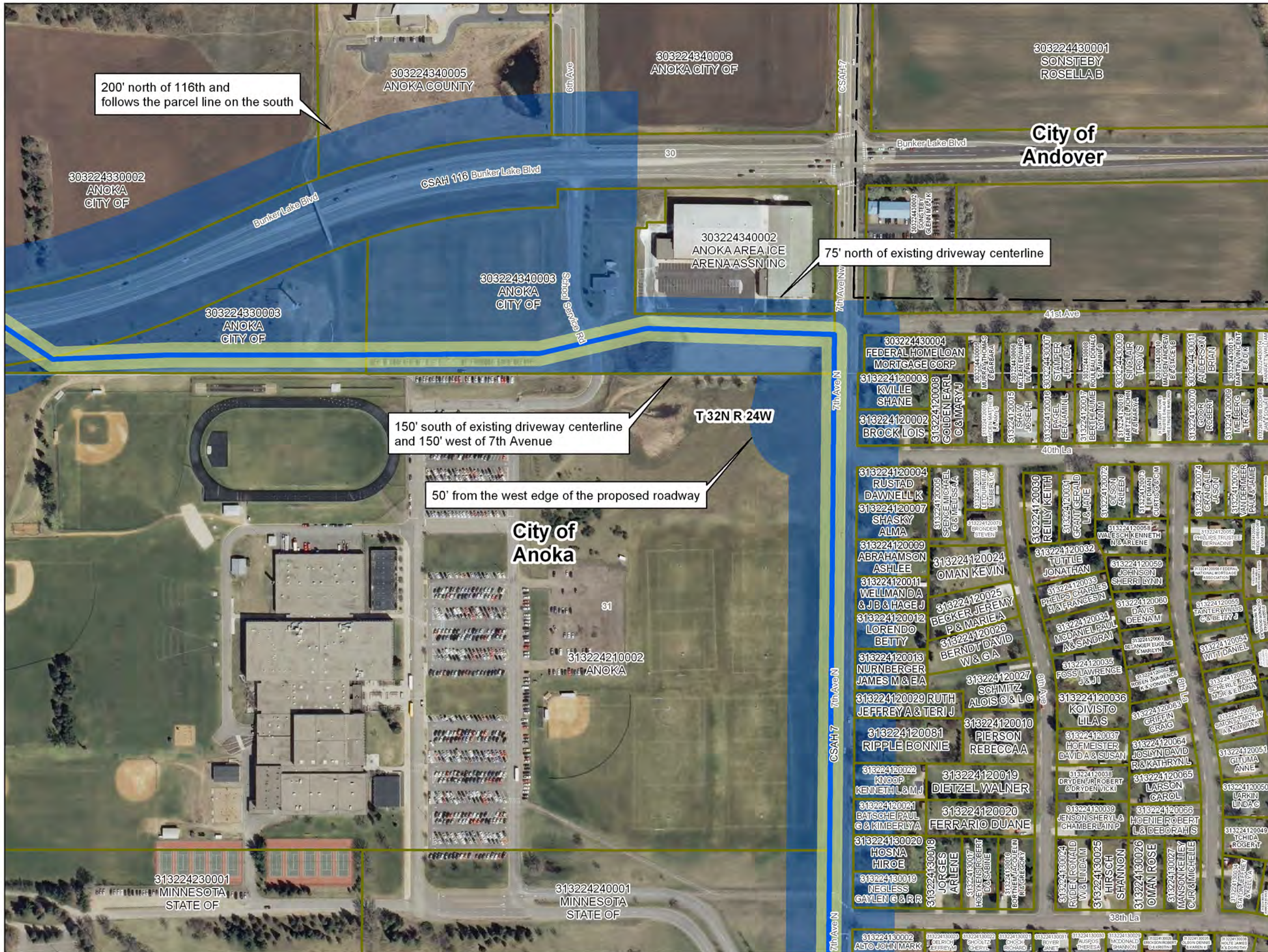


Data Sources Vary Between MNDOT, MNDNR, MNGEO and Great River Energy. 2010 Color Orthophotos from Farm Services Administration. Parcel Data from Anoka County GIS. Map Projection: UTM, NAD83, Zone15, Meters

Enterprise Park 115-kV Project Figure 4-1F

Proposed Route Map F

Updated: 9/30/2011



200' north of 116th and follows the parcel line on the south

75' north of existing driveway centerline

150' south of existing driveway centerline and 150' west of 7th Avenue

50' from the west edge of the proposed roadway

T32N R.24W

City of Andover

City of Anoka

303224330002 ANOKA CITY OF

303224340005 ANOKA COUNTY

303224340006 ANOKA CITY OF

303224430001 SONSTEBY ROSELLA B

303224340002 ANOKA AREA ICE ARENA ASSN INC

303224330003 ANOKA CITY OF

303224340003 ANOKA CITY OF

303224430004 FEDERAL HOME LOAN MORTGAGE CORP

313224120003 KVILLE SHANE

313224120002 BROCK LOIS

313224120004 RUSTAD DAWNELL K

313224120007 SHASKY ALMA

313224120009 ABRAHAMSON ASHLEE

313224120011 WELLMAN D & JB & HAGE J

313224120012 LORENDO BETTY

313224120013 NURNBERGER JAMES M & EA

313224120029 RUTH JEFFREYA & TERI J

313224120081 RIPPLE BONNIE

313224120022 KNOOP KENNETH L & M J

313224120021 BATSCH PAUL G & KIMBERLY A

313224130020 HOSNA HIROE

313224130019 NEGLESS GAYLEN G & R

313224120008 GOLDEN EARL G & MARY J

313224120015 SHAW JOSEPH

313224120005 SPENCE MICHAEL G & MELISSA

313224120007 SPENCE MICHAEL G & MELISSA

313224120024 OMAN KEVIN

313224120025 BECKER JEREMY P & MARIA A

313224120026 BERNDT DAVID W & GA

313224120027 SCHMITZ ALOIS G & L C

313224120019 PIERSON REBECCA A

313224120019 DIETZEL WALNER

313224120020 FERRARIO DUANE

313224130018 HOSNA HIROE

313224130017 JORGES ARLENE

313224130016 JORGES ARLENE

303224430007 STAMPER JHONDA

303224430009 HARTZEL JOHN

303224430011 ANDERSON BRIAN

303224430014 REILLY KEITH

303224430015 REILLY KEITH

303224430016 TUTTLE JONATHAN

303224430017 PHILIPS CHARLES H & FRANCES N

303224430018 MCDANIEL PAUL A & SANDRA I

303224430019 KOIVISTO LILA S

303224430020 HOFMEISTER DAVID A & SUSAN

303224430021 DRYDEN JR ROBERT

303224430022 JENSON SHERYL & CHAMBERLAIN P

303224430023 RYDEN RONALD W & LINDA M

303224430024 RYDEN RONALD W & LINDA M

303224430025 HIRSCH SHANNON

303224430008 MURPHY THOMAS & BARBARA

303224430009 MURPHY THOMAS & BARBARA

303224430010 MURPHY THOMAS & BARBARA

303224430011 MURPHY THOMAS & BARBARA

303224430012 MURPHY THOMAS & BARBARA

303224430013 MURPHY THOMAS & BARBARA

303224430014 MURPHY THOMAS & BARBARA

303224430015 MURPHY THOMAS & BARBARA

303224430016 MURPHY THOMAS & BARBARA

303224430017 MURPHY THOMAS & BARBARA

303224430018 MURPHY THOMAS & BARBARA

303224430019 MURPHY THOMAS & BARBARA

303224430020 MURPHY THOMAS & BARBARA

303224430021 MURPHY THOMAS & BARBARA

303224430022 MURPHY THOMAS & BARBARA

303224430001 SONSTEBY ROSELLA B

303224430002 SONSTEBY ROSELLA B

303224430003 SONSTEBY ROSELLA B

303224430004 SONSTEBY ROSELLA B

303224430005 SONSTEBY ROSELLA B

303224430006 SONSTEBY ROSELLA B

303224430007 SONSTEBY ROSELLA B

303224430008 SONSTEBY ROSELLA B

303224430009 SONSTEBY ROSELLA B

303224430010 SONSTEBY ROSELLA B

303224430011 SONSTEBY ROSELLA B

303224430012 SONSTEBY ROSELLA B

303224430013 SONSTEBY ROSELLA B

303224430014 SONSTEBY ROSELLA B

303224430015 SONSTEBY ROSELLA B

303224430016 MURPHY THOMAS & BARBARA

303224430017 MURPHY THOMAS & BARBARA

303224430018 MURPHY THOMAS & BARBARA

303224430019 MURPHY THOMAS & BARBARA

303224430020 MURPHY THOMAS & BARBARA

303224430021 MURPHY THOMAS & BARBARA

303224430022 MURPHY THOMAS & BARBARA

303224430023 MURPHY THOMAS & BARBARA

303224430024 MURPHY THOMAS & BARBARA

303224430025 MURPHY THOMAS & BARBARA

303224430026 MURPHY THOMAS & BARBARA

303224430027 MURPHY THOMAS & BARBARA

303224430028 MURPHY THOMAS & BARBARA

303224430029 MURPHY THOMAS & BARBARA

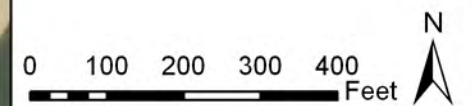
303224430030 MURPHY THOMAS & BARBARA



GREAT RIVER ENERGY®

A Touchstone Energy® Cooperative

- Great River Energy
- Proposed Route
 - Conceptual Alignment
 - Conceptual Alternate Alignment
 - Easement Area (70 ft)
- Existing Anoka Municipal Utility (AMU)
- Distribution Substation
 - Transmission Substation
- Existing Xcel Energy (XE)
- 115 kV AC Transmission
- Existing Great River Energy (GRE)
- 69 kV Transmission Line
 - 115 kV Transmission Line

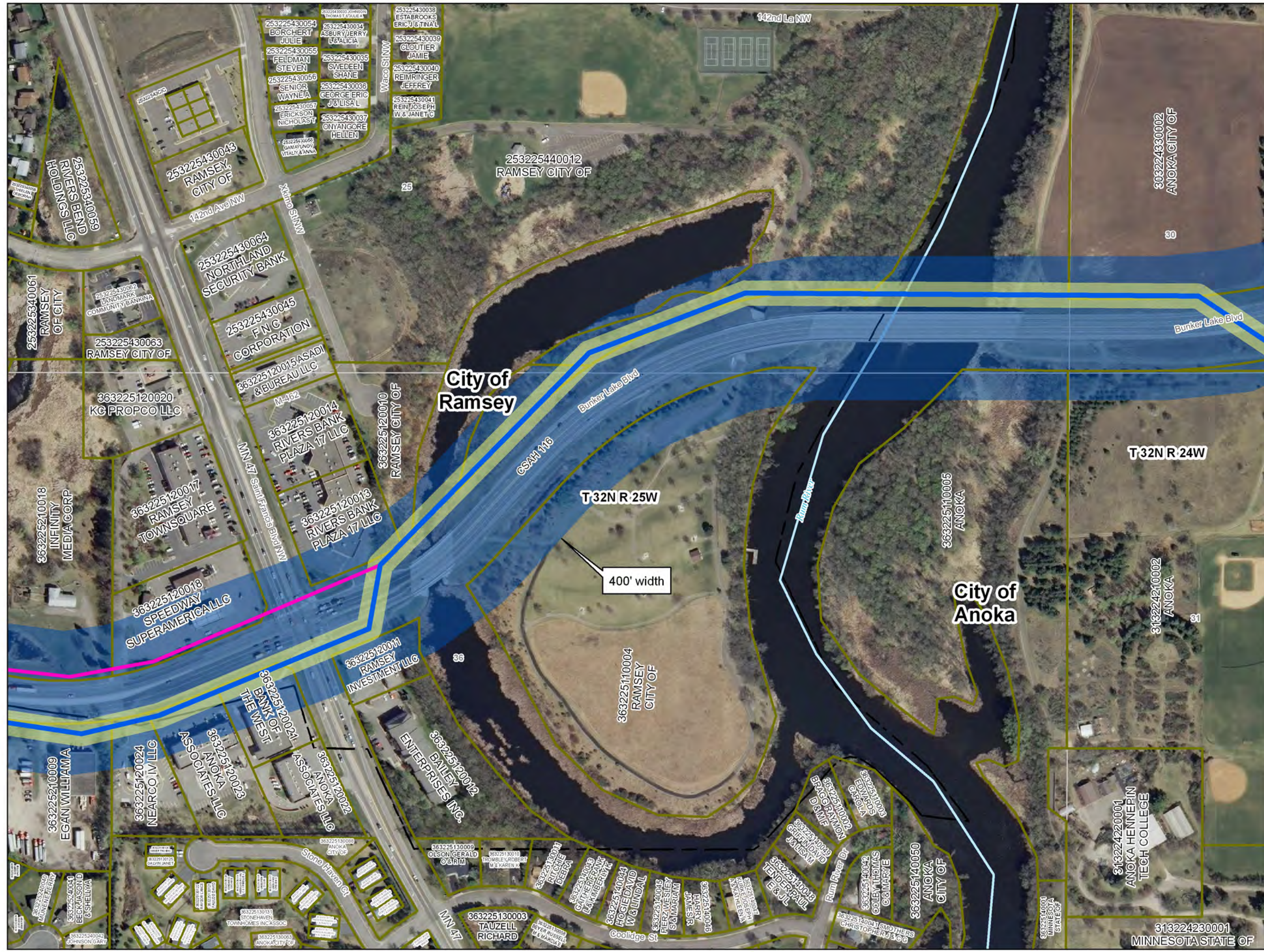


Data Sources Vary Between MNDOT, MNDNR, MNGEO and Great River Energy.
 2010 Color Orthophotos from Farm Services Administration.
 Parcel Data from Anoka County GIS.
 Map Projection: UTM, NAD83, Zone15, Meters

**Enterprise Park
 115-kV Project
 Figure 4-1G**

**Proposed Route
 Map G**

Updated: 9/30/2011

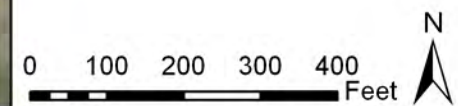




GREAT RIVER ENERGY

A Touchstone Energy® Cooperative

- Great River Energy
- Proposed Route
- Conceptual Alignment
- Conceptual Alternate Alignment
- Easement Area (70 ft)
- Existing Anoka Municipal Utility (AMU)
- Distribution Substation
- Existing Xcel Energy (XE)
- Transmission Substation
- Existing Great River Energy (GRE)
- 115 kV AC Transmission
- Existing Anoka Municipal Utility (AMU)
- 69 kV Transmission Line
- Existing Xcel Energy (XE)
- 115 kV Transmission Line



Data Sources Vary Between MNDOT, MNDNR, MNGEO and Great River Energy.
 2010 Color Orthophotos from Farm Services Administration.
 Parcel Data from Anoka County GIS.
 Map Projection: UTM, NAD83, Zone15, Meters

**Enterprise Park
 115-kV Project
 Figure 4-11**

**Proposed Route
 Map I**

Updated: 9/30/2011

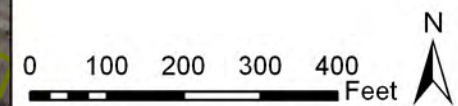




GREAT RIVER ENERGY

A Touchstone Energy® Cooperative

- Great River Energy
- Proposed Route
- Conceptual Alignment
- Conceptual Alternate Alignment
- Easement Area (70 ft)
- Existing Anoka Municipal Utility (AMU)
 - Distribution Substation
 - Transmission Substation
- Existing Xcel Energy (XE)
- Existing Great River Energy (GRE)
 - 115 kV AC Transmission
- Existing Anoka Municipal Utility (AMU)
 - 69 kV Transmission Line
- Existing Xcel Energy (XE)
 - 115 kV Transmission Line

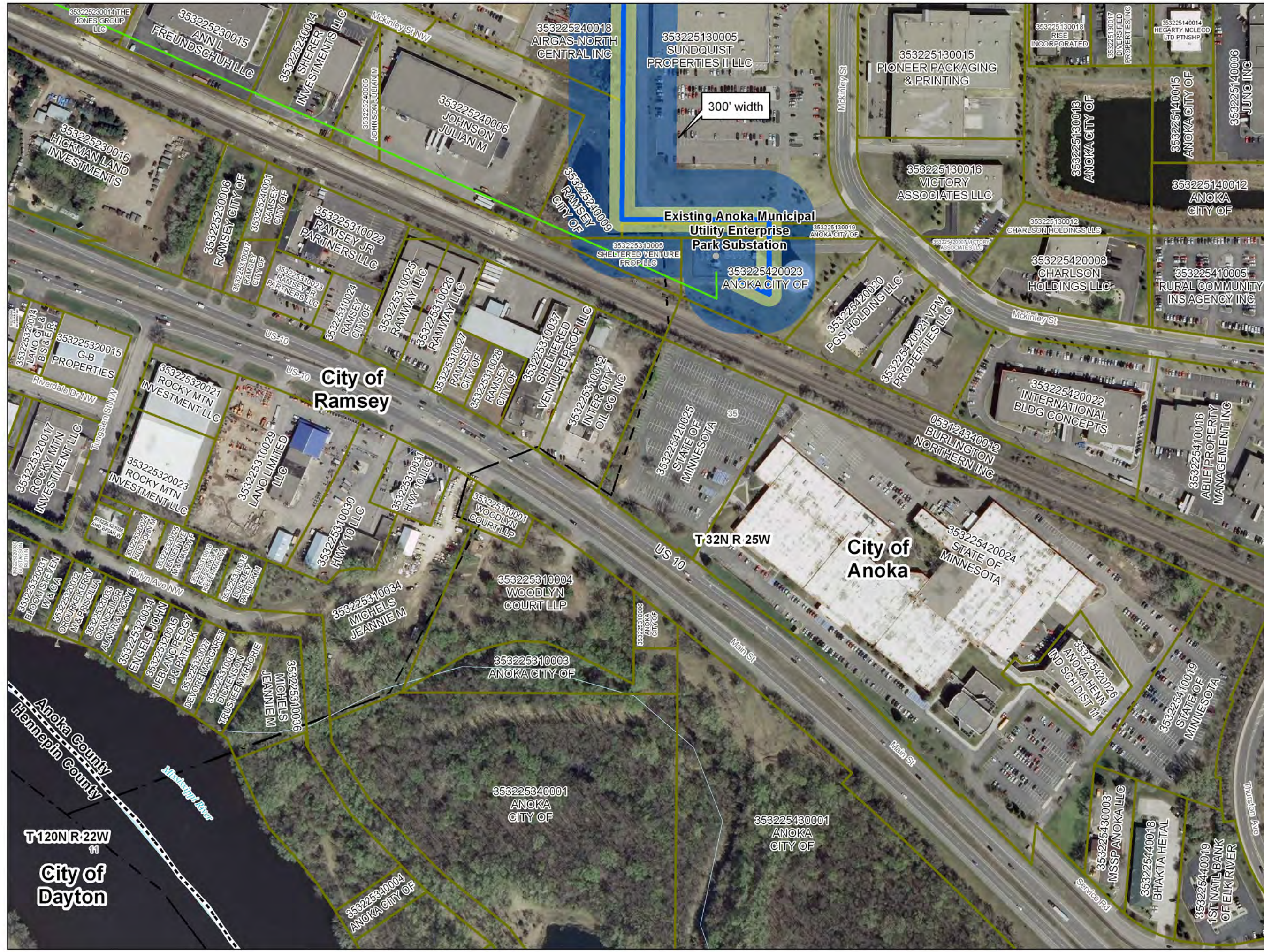


Data Sources Vary Between MNDOT, MNDNR, MNGEO and Great River Energy.
 2010 Color Orthophotos from Farm Services Administration.
 Parcel Data from Anoka County GIS.
 Map Projection: UTM, NAD83, Zone15, Meters

**Enterprise Park
 115-kV Project
 Figure 4-1J**

**Proposed Route
 Map J**

Updated: 9/30/2011



City of Ramsey

City of Anoka

Anoka County
Hennepin County

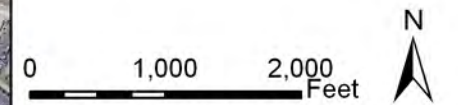
T120NR22W
City of Dayton



GREAT RIVER ENERGY

A Touchstone Energy® Cooperative

- Great River Energy
 - Proposed Route
 - Rejected Route 1
 - Rejected Route 2
 - Rejected Route 3
 - Rejected Route 4
 - Rejected Route 5
 - Rejected Route 6
 - Rejected Route 7
 - Rejected Route 8
 - Rejected Route 9
- Existing Great River Energy (GRE)
 - 115 kV AC Transmission
- Existing Anoka Municipal Utility (AMU)
 - Distribution Substation
- Existing Xcel Energy (XE)
 - Transmission Substation
- Existing Anoka Municipal Utility (AMU)
 - 69 kV Transmission Line
- Existing Xcel Energy (XE)
 - 115 kV Transmission Line



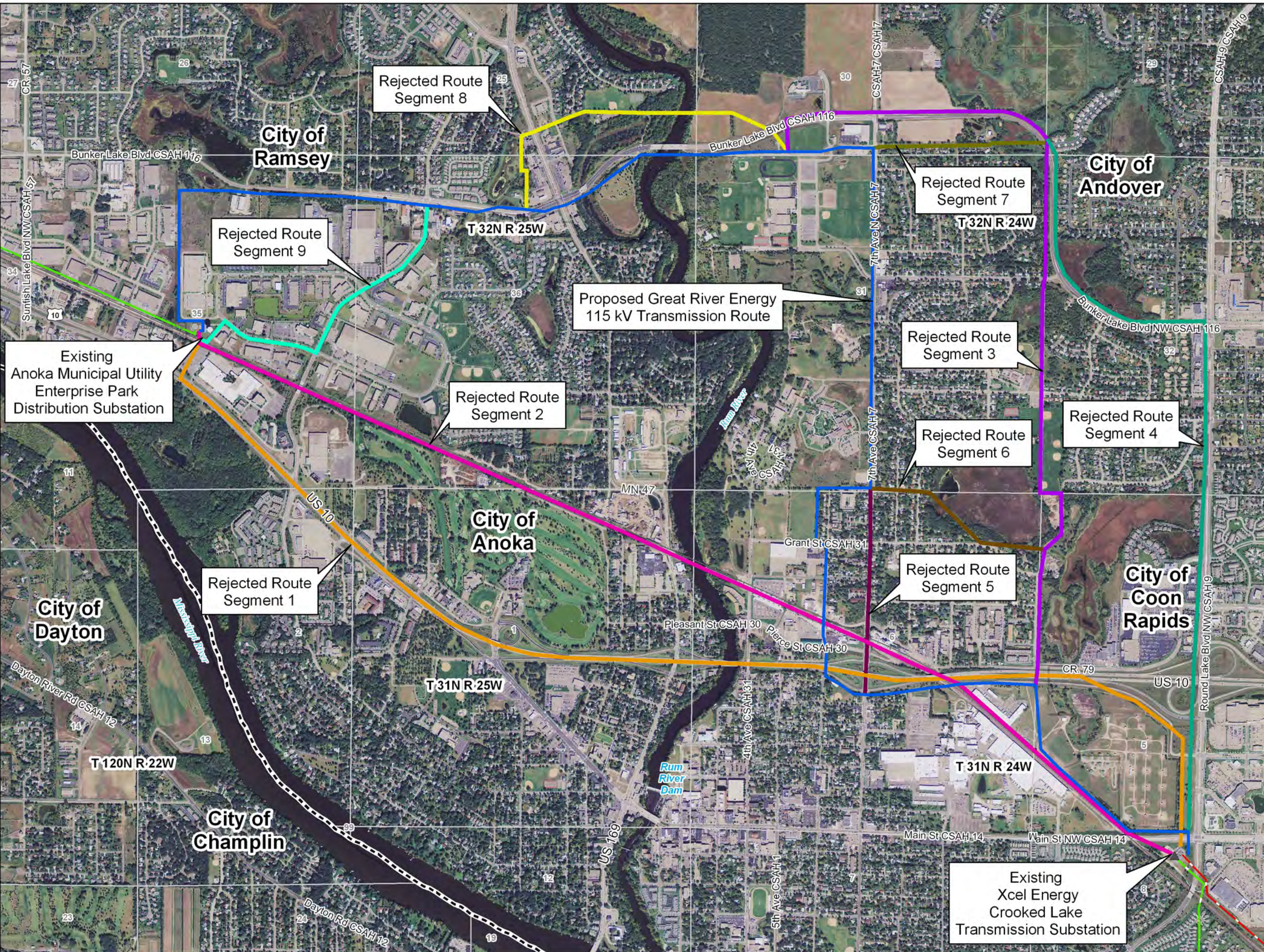
Data Sources Vary Between MNDOT, MNDNR, MNGEO and Great River Energy.
 2010 Color Orthophotos from Farm Services Administration.

Map Projection:
 UTM, NAD83, Zone15, Meters

**Enterprise Park
 115-kV Project
 Figure 4-2**

**Rejected
 Routes**

Updated: 8/26/2011



CC Work Session

2.3.

Meeting Date: 11/01/2011

By: Diana Lund, Finance

Title:

2012 General Fund Levy & Budget

Background:

The city adopted the proposed preliminary 2012 Levy and budget at its regular meeting of September 13, 2011. At the time of adoption, staff had proposed a tax rate of 44.642%. Staff was notified from the county that the actual tax rate has come in at 44.321%.

Attached is a brief summary of the proposed 2012 Levy and the proposed tax rates of all taxing jurisdictions (school, county & city) and the net effect on a residents property tax.

As the 2012 levy was reduced by using one-time or short-term financing, a schedule is included which outlines the funds used and possible future funding.

Funding Source:

None

Council Action:

Discussion only of 2012 levy and budget.

Attachments

Effect of levy on taxpayers

2012 Levy & Budget

Form Review

Inbox

Kurt Ulrich

Reviewed By

Kurt Ulrich

Date

10/27/2011 03:24 PM

Form Started By: Diana Lund

Started On: 10/27/2011 07:45 AM

Final Approval Date: 10/27/2011

Property Tax Calculations
Residential Properties:

2011 Valuations

2012 Valuations

Avg MV Decrease was 4.3%

ISD #11 Example

Estimated MV	\$ 205,600
Less: 2012 MVHC Exclusion	\$ -
Taxable Market Value	\$ 205,600
Class Rate	1%
Net Tax Capacity	\$ 2,056
Total Tax Cap. Rate	110.413%
Gross Tax	\$ 2,270
Less: 2011 MVHC	\$ (187)
Net Tax	\$ 2,083

\$ 193,100
\$ (19,900)
\$ 173,200
1%
\$ 1,732
113.119%
\$ 1,959
\$ -
\$ 1,959

Net Tax Increase(Decrease)
6% MV decrease

\$ (124) 6% decrease

ISD #728 Example

Estimated MV	\$ 368,400
Less: 2012 MVHC Exclusion	\$ -
Taxable Market Value	\$ 368,400
Class Rate	1%
Net Tax Capacity	\$ 3,684
Total Tax Cap. Rate	129.903%
Gross Tax	\$ 4,786
Less: 2011 MVHC	\$ (41)
Net Tax	\$ 4,745

\$ 360,700
\$ (4,200)
\$ 356,500
1%
\$ 3,565
137.164%
\$ 4,890
\$ -
\$ 4,890

2% MV Decrease

\$ 145 3% increase

ISD #728 Example

Estimated MV	\$ 236,100
Less: 2012 MVHC Exclusion	\$ -
Taxable Market Value	\$ 236,100
Class Rate	1%
Net Tax Capacity	\$ 2,361
Total Tax Cap. Rate	129.903%
Gross Tax	\$ 3,067
Less: 2011 MVHC	\$ (160)
Net Tax	\$ 2,907

\$ 231,400
\$ (16,400)
\$ 215,000
1%
\$ 2,150
137.164%
\$ 2,949
\$ -
\$ 2,949

2% MV Decrease

\$ 42 1.5% increase

ISD #11 Example

Estimated MV	\$ 168,700
Less: 2012 MVHC Exclusion	\$ -
Taxable Market Value	\$ 168,700
Class Rate	1%
Net Tax Capacity	\$ 1,687
Total Tax Cap. Rate	110.413%
Gross Tax	\$ 1,863
Less: 2011 MVHC	\$ (221)
Net Tax	\$ 1,642

\$ 163,900
\$ (22,500)
\$ 141,400
1%
\$ 1,414
113.119%
\$ 1,600
\$ -
\$ 1,600

2.9% MV Decrease

\$ (43) 2.7% Decrease

ISD #11 Example			
Estimated MV	\$ 276,000	\$ 271,000	1.9% MV Decrease
Less: 2012 MVHC Exclusion	\$ -	\$ (12,900)	
Taxable Market Value	\$ 276,000	\$ 258,100	
Class Rate	1%	1%	
Net Tax Capacity	\$ 2,760	\$ 2,581	
Total Tax Cap. Rate	110.413%	113.119%	
Gross Tax	\$ 3,047	\$ 2,920	
Less: 2011 MVHC	\$ (124)	\$ -	
Net Tax	\$ 2,923	\$ 2,920	\$ (4) .2% Decrease

ISD #11 Example			
Estimated MV	\$ 252,100	\$ 244,600	3% MV Decrease
Less: 2012 MVHC Exclusion	\$ -	\$ (15,200)	
Taxable Market Value	\$ 252,100	\$ 229,400	
Class Rate	1%	1%	
Net Tax Capacity	\$ 2,521	\$ 2,294	
Total Tax Cap. Rate	110.413%	113.119%	
Gross Tax	\$ 2,784	\$ 2,595	
Less: 2011 MVHC	\$ (146)	\$ -	
Net Tax	\$ 2,638	\$ 2,595	\$ (43) 1.7% Decrease

City of Ramsey

2012 Preliminary Levy Summary

<u>Proposed Tax Levies:</u>	<u>2012</u>	<u>2011</u>
General Fund Levy	\$7,028,835	\$6,992,127
EDA Levy	169,853	291,705
Debt Service Levies:		
CIP Bond (Fire Station #1)	151,386	150,121
2007 Capital EQPT Certificates	185,194	186,441
Lease Revenue Bond (Municipal Ctr)	910,215*	508,215
	_____	_____
 Total Proposed Levy	 \$8,445,483	 \$8,128,609

*Total Muni Center Debt \$1,513,215 (\$603,000 funded-one time transfer from fund balance policy change in 2010)

2012 - City of Ramsey

Proposed Tax Rates Anoka School District

Taxing District	2011 Tax Rate	Percent of Total Tax Rate	2012 Tax Rate	Percent of Total Tax Rate
City of Ramsey	39.801	36.047%	44.321	39.181%
Anoka County	41.708	37.775%	42.173	37.282%
Anoka Hennepin ISD #11	23.999	21.736%	21.447	18.960%
Special Taxing Districts	4.905	4.442%	5.178	4.577%
Total	110.413	100.00%	113.119	100.00%

2012 - City of Ramsey
Proposed Tax Rates
Elk River School District

Taxing District	2011 Tax Rate	Percent of Total Tax Rate	2012 Tax Rate	Percent of Total Tax Rate
City of Ramsey	39.801	30.639%	44.321	32.312%
Anoka County	41.708	32.107%	42.173	30.747%
Elk River ISD #728	43.489	33.478%	45.492	33.166%
Special Taxing Districts	4.905	3.776%	5.178	3.775%
Total	129.903	100.00%	137.164	100.00%

City of Ramsey
Proposed Levy
Total Budget and Property Taxes

Budgeted Expenditures

2011 Adopted Budget \$ 9,449,400

Proposed 2012 Budget \$ 9,689,991

Change from 2011 to 2012 2.55%
\$240,591

One Time Funding or Short-time Funding Options included in 2012 Budget/Levy

Budget/Levy Item Funded:		Net Effect on Budget/Levy:	Future Funding:
Municipal Center Debt	\$ 603,000	Reduced Debt Service Levy Funding Source: Funds retained in PIR fund from 2010 Fund Balance Policy Change	2013: No Debt on Capital Equipment Certificates. Reduces debt by \$185,193 City Will need additional one-time funding of \$417,807 to cover the \$603,000 Internal borrowing or one-time transfer from undesignated fund (e.g. Landfill Trust Fd) 2014: TIF 2 & TIF 10 are decertified: Will add back approx. \$605,000 to City taxes
Street Maintenance Program	\$ 275,000	Reduced General Fund Levy Funding Source: TIF 4 (Up from \$250,000 in 2011)	TIF 4 decertifies in 2014. Will be last year of funding
	\$ 219,500	Reduced General Fund Levy Funding Source: PIR Fund	2012 Year-end estimated balance of PIR Fund: \$722,000 Fund will be depleted in 2015 at 2012 rate of withdrawl
Environmental Coordinator Position	\$ 87,364	Reduced General Fund Levy Funding Source: Landfill Tipping Fee Fund	2012 Balance of Landfill Tipping Fee: \$156,636 Fund will be depleted in approximately 1.79 years based on 2012 rate of withdrawl
 Total One-time/Short-Term Funding	 <u>\$ 1,184,864</u>		
 Levy Reduction Summary:			
General Levy Reduction	\$ 581,864		
Debt Levy Reduction	\$ 603,000		
	<u>\$ 1,184,864</u>		

NOTE: Total 2012 Proposed Levy for General Fund & Debt was \$8,275,630

CC Work Session

3. 1.

Meeting Date: 11/01/2011

By: Jo Thieling, Administrative Services

Title:

Review Future Topics/Calendar

Background:

Attached is the list of topics for future work sessions.

Funding Source:

N/A

Council Action:

For Council review - no formal action necessary.

Attachments

Future Topics/Calendar

Form Review

Inbox

Kurt Ulrich

Form Started By: Jo Thieling

Reviewed By

Jo Thieling

Date

10/27/2011 11:40 AM

Started On: 10/27/2011 11:37 AM

Final Approval Date: 10/27/2011

**Work Session Calendar
2011**

Month	Date	Topics for Discussion
November	7	<ul style="list-style-type: none"> • Review of Rates and Fees (DL) • Transit Taxing District (BO)
Others on List – including 2011 Strategic Planning Items		<ul style="list-style-type: none"> • Discuss ISO Rating and Program to Improve (HN) • Discuss Leash Law (JW) • 167th & 47 Water Services Extension (AB) • Look at pilot programs (e.g. volunteer programs – low maintenance) • Proactively recruit residential development and seek builders input • Review development fees and standards regarding construction • Develop TIF tracking plan with regard to fiscal disparities impact • Establish fund reserve policy • Review City-owned lands and create plan for it – <i>scheduled for July 12 agenda</i> • Review park programming and potential reallocation of parks – <i>scheduled for July 12 agenda – included in Review City owned land . . .</i> • Construct boat landing at River’s Bend – <i>was reviewed with Council and determined it was not a priority at this location.</i> • Build on outdoors/sportsmen’s market (e.g. stock pond/lake) • Coordinate COR marketing and City marketing • Create Master Plan 167th Avenue/Highway 47 – plan for redevelopment – <i>Discuss after Joint Meeting between CC & EDA</i> • Develop community center/indoor sports complex • Old Town Hall relocation • Review & revise Development Management contract and manage COR expenditures • Consider creation of a Transportation Taxing District • Seek grant funding for transportation projects and service delivery • Complete US 10/ County Road 83 interchange design – pursue funding • Establish position on TH #47 South of Bunker to Highway #10 <p><u>Public Works</u></p> <ul style="list-style-type: none"> • Review plan for US Highway #10 pedestrian overpass and connection with Municipal Center ramp • Review Dirt Road Elimination Policy (DREP) • Create opportunities for snowmobile, four-wheeler & golf cart use • Review sidewalk plowing policy
March 5, 2012		<ul style="list-style-type: none"> • Interviews for Boards and Commissions