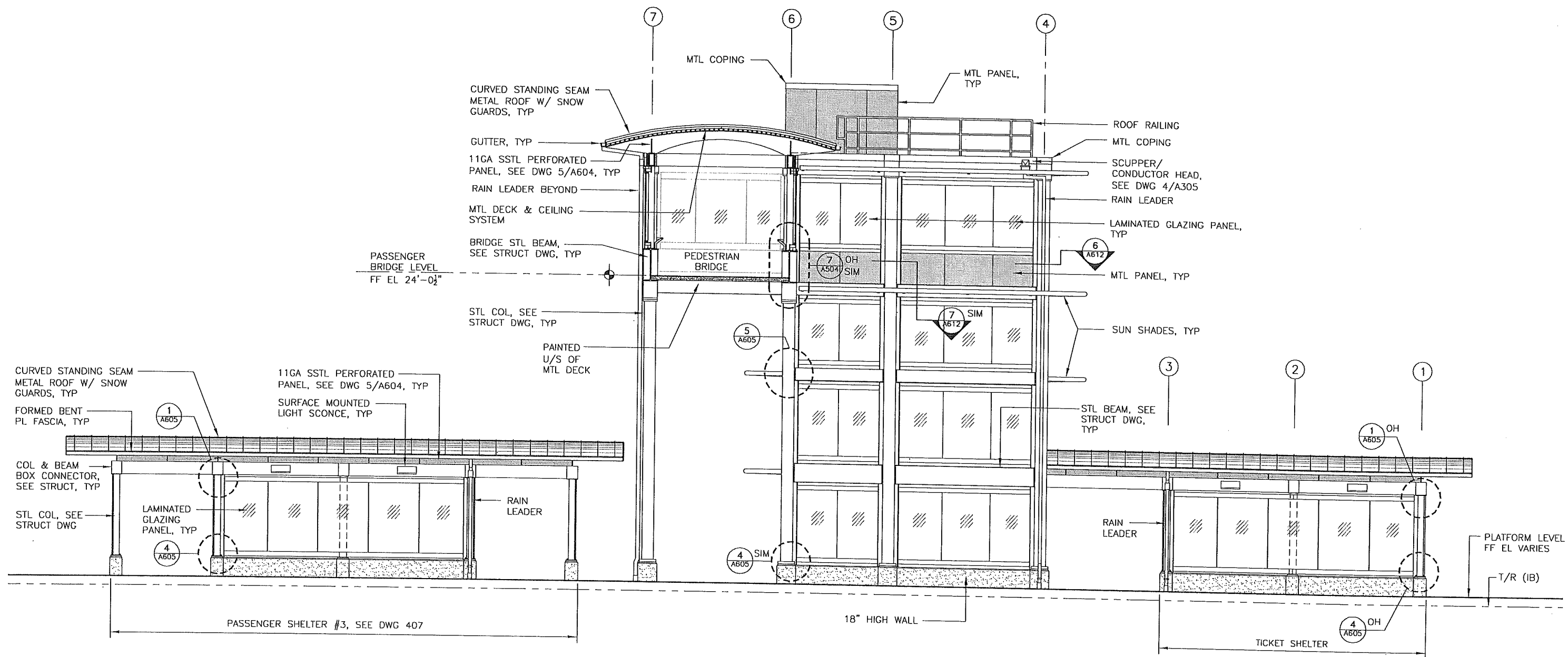


J:\TRACKWORK\6708_NORTHSTAR\NorthStarCommuterRail\100% submit\01\STATION\1000-RAMSEY\SHEET\A201.dwg April 01, 2010 - 11:25am



1 NORTH ELEVATION - INBOUND PLATFORM
A201
0 2' 4' 6'
1/4" = 1'-0"

No.	Date	Revisions	App.	DRAWING NAME
				A201
				DESIGNED BY: RA
				DRAWN BY: RA
				CHECKED BY: PD
				DATE: 03-12-10
				PROJECT NO. PROJ NO

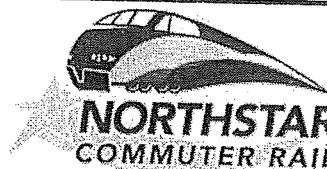
Kimley-Horn and Associates, Inc.

AECOM

AECOM USA, Inc.
7 St. Paul Street, 17th Floor
Bellevue, WA 98005
T 410.837.1700 F 410.578.1306
www.aecom.com

I HEREBY CERTIFY THAT THIS PLAN, SPECIFICATION OR REPORT WAS PREPARED BY ME OR UNDER MY DIRECT SUPERVISION AND THAT I AM A DULY LICENSED ARCHITECT UNDER THE LAWS OF THE STATE OF MINNESOTA.

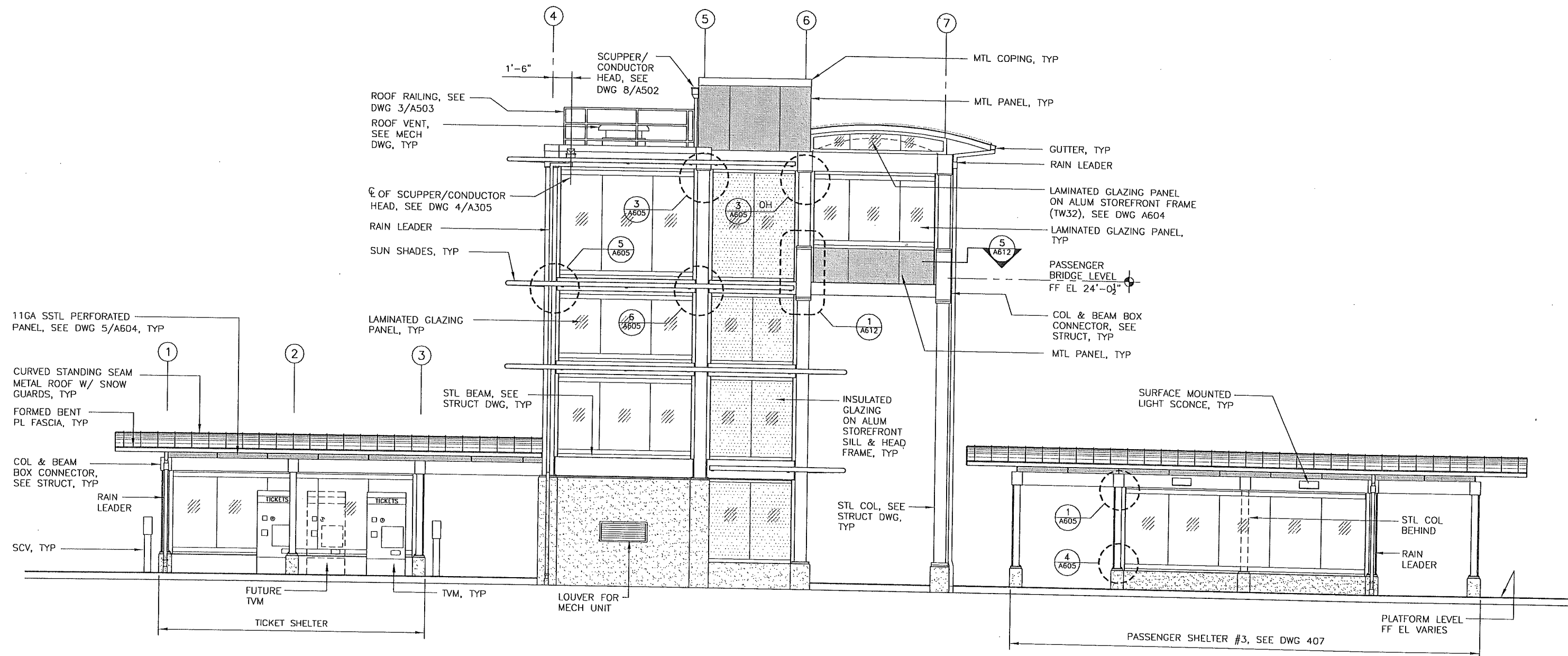
Kenneth W. Griffin
DATE: 03-12-10 MN LIC. NO. 44872



ANOKA COUNTY REGIONAL RAIL AUTHORITY
NORTHSTAR CORRIDOR COMMUTER RAIL
RAMSEY STATION
RAMSEY, MINNESOTA
INBOUND
ELEVATOR /STAIR TOWER, PASSENGER AND TICKET SHELTER
NORTH ELEVATION

STATION
RAMSEY
SHEET NO.
A201

J:\TRACKWORK\6708_NORTHSTAR NorthStarCommuterRail\100% submittal\STATION\1000-RAMSEY\SHEET\A202.dwg April 01, 2010 - 11:26am



1 SOUTH ELEVATION - INBOUND PLATFORM
 A202
 0 2' 4' 6'
 1/4"=1'-0"

No.	Date	Revisions	App.

DRAWING NAME	A202
DESIGNED BY:	RA
DRAWN BY:	RA
CHECKED BY:	PD
DATE:	03-12-10
PROJECT NO.	PROJ NO

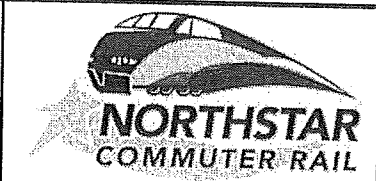
Kimley-Horn and Associates, Inc.

708 Paul Street, 17th Floor
 Baltimore, MD 21202
 T 410.527.1700 F 410.578.1306
 www.aecom.com

AECOM

I HEREBY CERTIFY THAT THIS PLAN, SPECIFICATION OR REPORT WAS PREPARED BY ME OR UNDER MY DIRECT SUPERVISION AND THAT I AM A DULY LICENSED ARCHITECT UNDER THE LAWS OF THE STATE OF MINNESOTA.

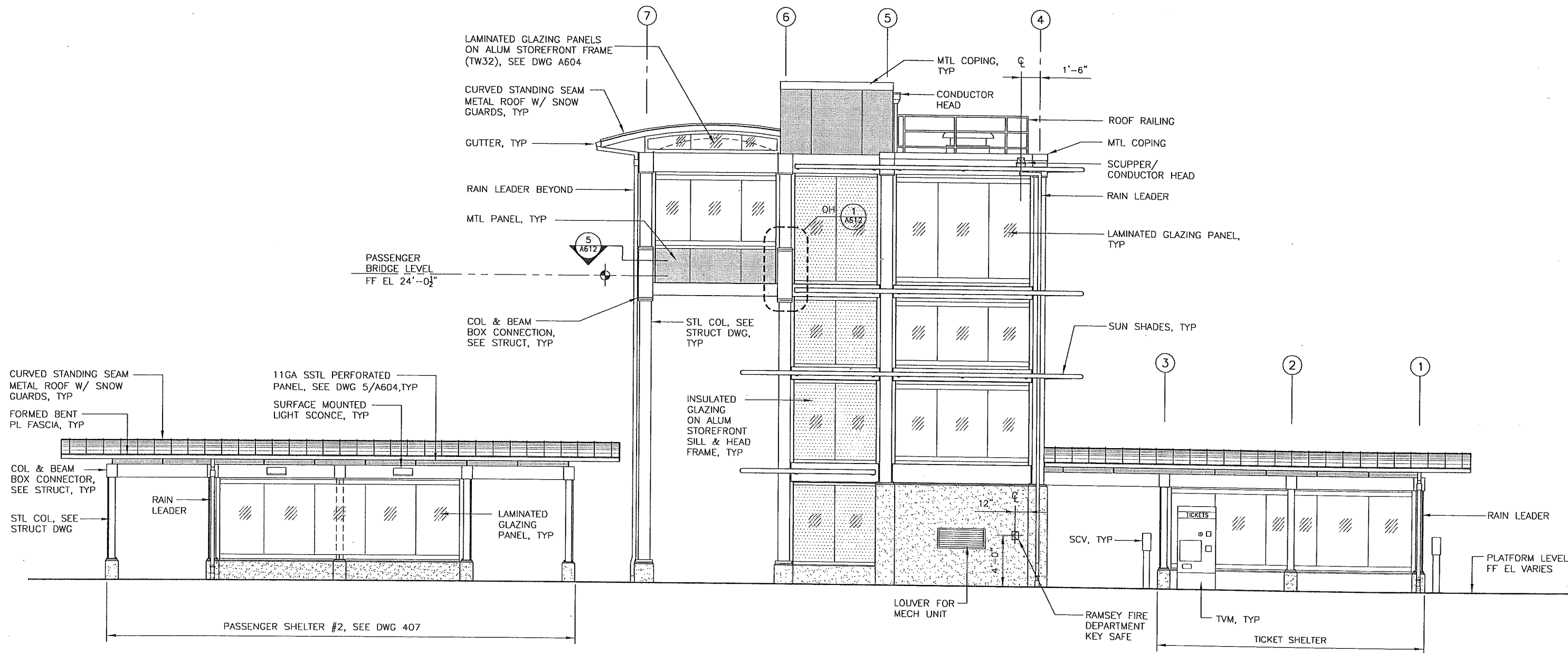
Kenneth W. Griffin
 DATE: 03-12-10 MN LIC. NO. 44872



ANOKA COUNTY REGIONAL RAIL AUTHORITY
 NORTHSTAR CORRIDOR COMMUTER RAIL
 RAMSEY STATION
 RAMSEY, MINNESOTA
 INBOUND
 ELEVATOR STAIR/TOWER, PASSENGER AND TICKET SHELTER
 SOUTH ELEVATION

STATION	RAMSEY
SHEET NO.	A202

J:\TRACKWORK\6708_NORTHSTAR\NorthStarCommuterRail\1000-RAMSEY\SHEET\A204.dwg April 01, 2010 - 11:28am



1 NORTH ELEVATION - OUTBOUND PLATFORM
 A204
 0 2' 4' 6'
 1/4" = 1'-0"

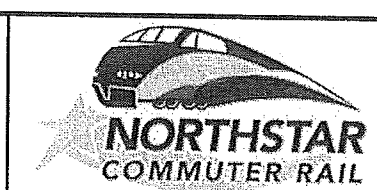
No.	Date	Revisions	App.

DRAWING NAME A204	
DESIGNED BY:	RA
DRAWN BY:	RA
CHECKED BY:	PD
DATE:	03-12-10
PROJECT NO.	PROJ NO

Kimley-Horn and Associates, Inc.
 AECOM

I HEREBY CERTIFY THAT THIS PLAN, SPECIFICATION OR REPORT WAS PREPARED BY ME OR UNDER MY DIRECT SUPERVISION AND THAT I AM A DULY LICENSED ARCHITECT UNDER THE LAWS OF THE STATE OF MINNESOTA.

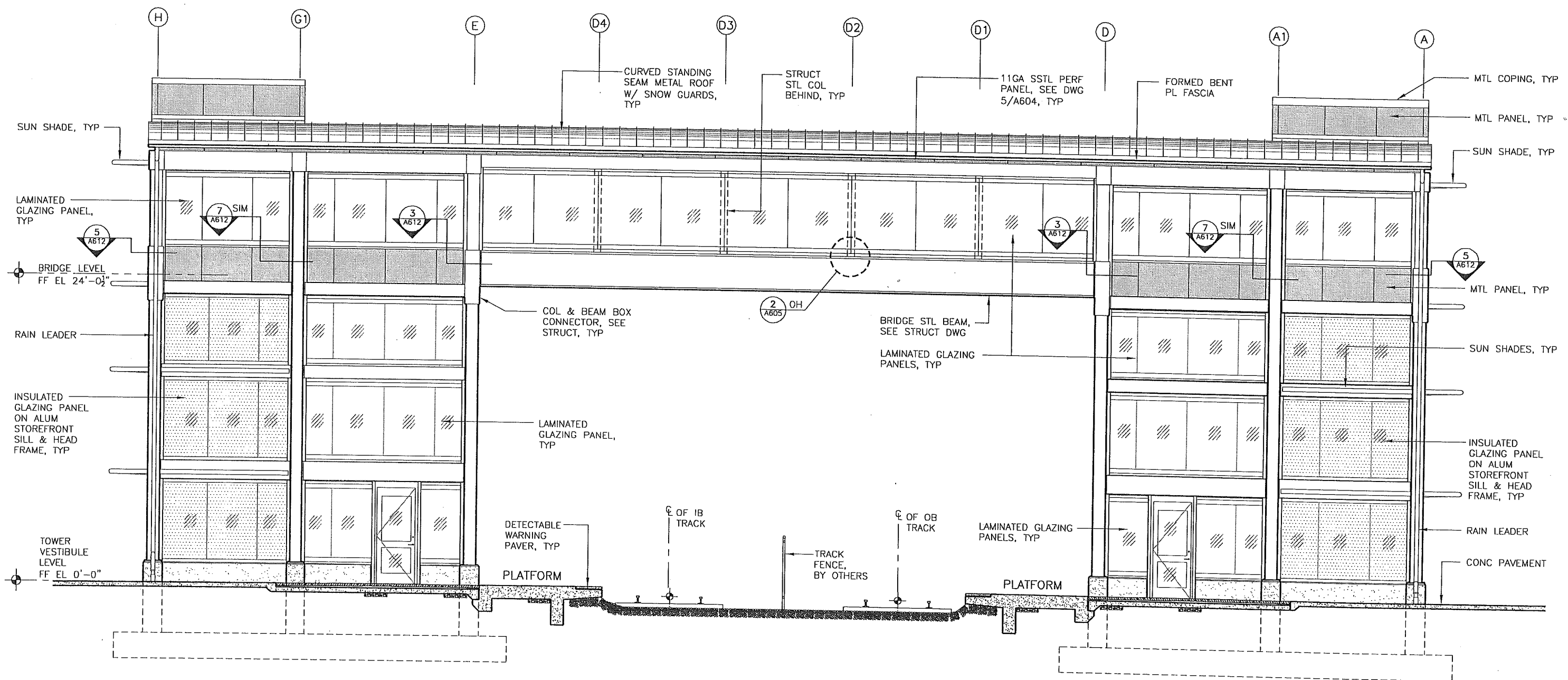
Kenneth W. Griffin
 DATE: 03-12-10 MH LIC. NO. 44872



ANOKA COUNTY REGIONAL RAIL AUTHORITY
 NORTHSTAR CORRIDOR COMMUTER RAIL
 RAMSEY STATION
 RAMSEY, MINNESOTA
 OUTBOUND
 ELEVATOR/STAIR TOWER, PASSENGER AND TICKET SHELTER
 NORTH ELEVATION

STATION	RAMSEY
SHEET NO.	A204

J:\TRACKWORK\6708_NORTHSTAR NorthStarCommuterRail\100% submittal\STATION\1000-RAMSEY\SHEET\A205.dwg April 01, 2010 - 11:29am



1 EAST ELEVATION
A205
0 2' 4' 6'
1/4"=1'-0"

No.	Date	Revisions	App.

DRAWING NAME A205	
DESIGNED BY:	RA
DRAWN BY:	RA
CHECKED BY:	PD
DATE:	03-12-10
PROJECT NO.	PROJ NO

Kimley-Horn and Associates, Inc.

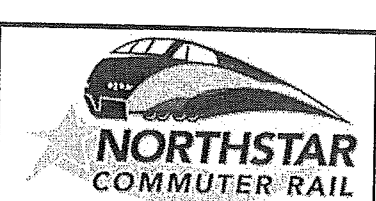
TRANSPORTATION

AECOM

AECOM USA, Inc.
7 St. Paul Street, 17th Floor
Baltimore, MD 21202
T 410.657.1700 F 410.578.1305
www.aecom.com

I HEREBY CERTIFY THAT THIS PLAN, SPECIFICATION OR REPORT WAS PREPARED BY ME OR UNDER MY DIRECT SUPERVISION AND THAT I AM A DULY LICENSED ARCHITECT UNDER THE LAWS OF THE STATE OF MINNESOTA.

Kenneth W. Griffin
DATE: 03-12-10 MN LIC. NO. 44872

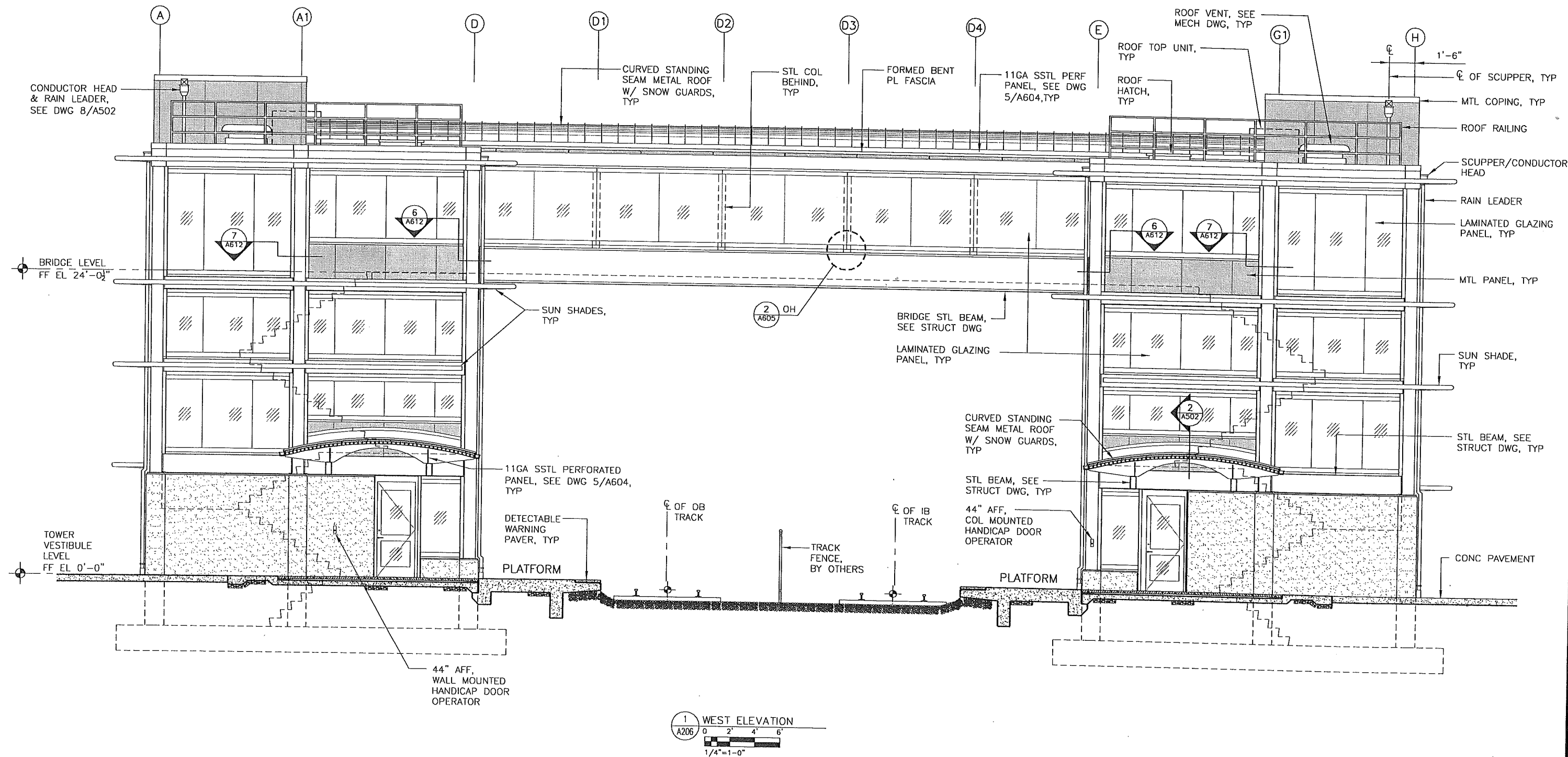


ANOKA COUNTY REGIONAL RAIL AUTHORITY
NORTHSTAR CORRIDOR COMMUTER RAIL
RAMSEY STATION
RAMSEY, MINNESOTA



ELEVATOR/STAIR TOWER
EAST ELEVATION

STATION	RAMSEY
SHEET NO.	A205

J:\TRACKWORK\6706_NORTHSTAR\NorthStarCommuterRail\100%_submit\A206.dwg April 01, 2010 - 11:30am



1 WEST ELEVATION
A206
0 2' 4' 6'
1/4"=1'-0"

No.	Date	Revisions	App.	DRAWING NAME A206		 Kimley-Horn and Associates, Inc.	I HEREBY CERTIFY THAT THIS PLAN, SPECIFICATION OR REPORT WAS PREPARED BY ME OR UNDER MY DIRECT SUPERVISION AND THAT I AM A DULY LICENSED ARCHITECT UNDER THE LAWS OF THE STATE OF MINNESOTA. Kenneth W. Griffin DATE: 03-12-10 MN LIC. NO. 44872	 NORTHSTAR COMMUTER RAIL	ANOKA COUNTY REGIONAL RAIL AUTHORITY NORTHSTAR CORRIDOR COMMUTER RAIL RAMSEY STATION RAMSEY, MINNESOTA ELEVATOR /STAIR TOWER WEST ELEVATION	STATION
				DESIGNED BY: RA	DRAWN BY: RA					CHECKED BY: PD
										SHEET NO.
										A206