

SHEET INDEX

SHEET	TITLE
C0.1	CIVIL TITLE SHEET
C1.0	OVERALL EXISTING CONDITIONS DESCRIPTION
C2.0	OVERALL SITE PLAN
C2.1	SITE PLAN-SE
C2.2	SITE PLAN-W
C2.3	SITE PLAN-NW
C3.1	GRADING, DRAINAGE, PAVING, & EROSION CONTROL-SE
C3.2	GRADING, DRAINAGE, PAVING, & EROSION CONTROL-SEN
C3.3	GRADING, DRAINAGE, PAVING, & EROSION CONTROL-NW
C4.1	UTILITIES
C4.2	UTILITIES
C7.1	CIVIL CONSTRUCTION DETAILS
C7.2	CIVIL CONSTRUCTION DETAILS
C7.3	CIVIL CONSTRUCTION DETAILS
L2.1	LANDSCAPE-SE
L2.2	LANDSCAPE-SEN
L2.3	LANDSCAPE-NW

REVISION HISTORY

DATE	REVISION	REVIEW
07 JUN 2011	CITY SUBMITTAL	SES
09 JUN 2011	WATERSEDS SUBMITTAL	SES

PROJECT MANAGER REVIEW
 BY: ENK DATE: 06.07.2011

CERTIFICATION

**PRELIMINARY
 NOT FOR
 CONSTRUCTION**

IF THE SIGNATURE, SEAL, OR FOUR LINES DIRECTLY ABOVE ARE NOT VISIBLE, THIS SHEET HAS BEEN REPRODUCED BEYOND INTENDED REPRODUCIBILITY AND IS NO LONGER A VALID DOCUMENT. PLEASE CONTACT THE ENGINEER TO REQUEST ADDITIONAL DOCUMENTS.

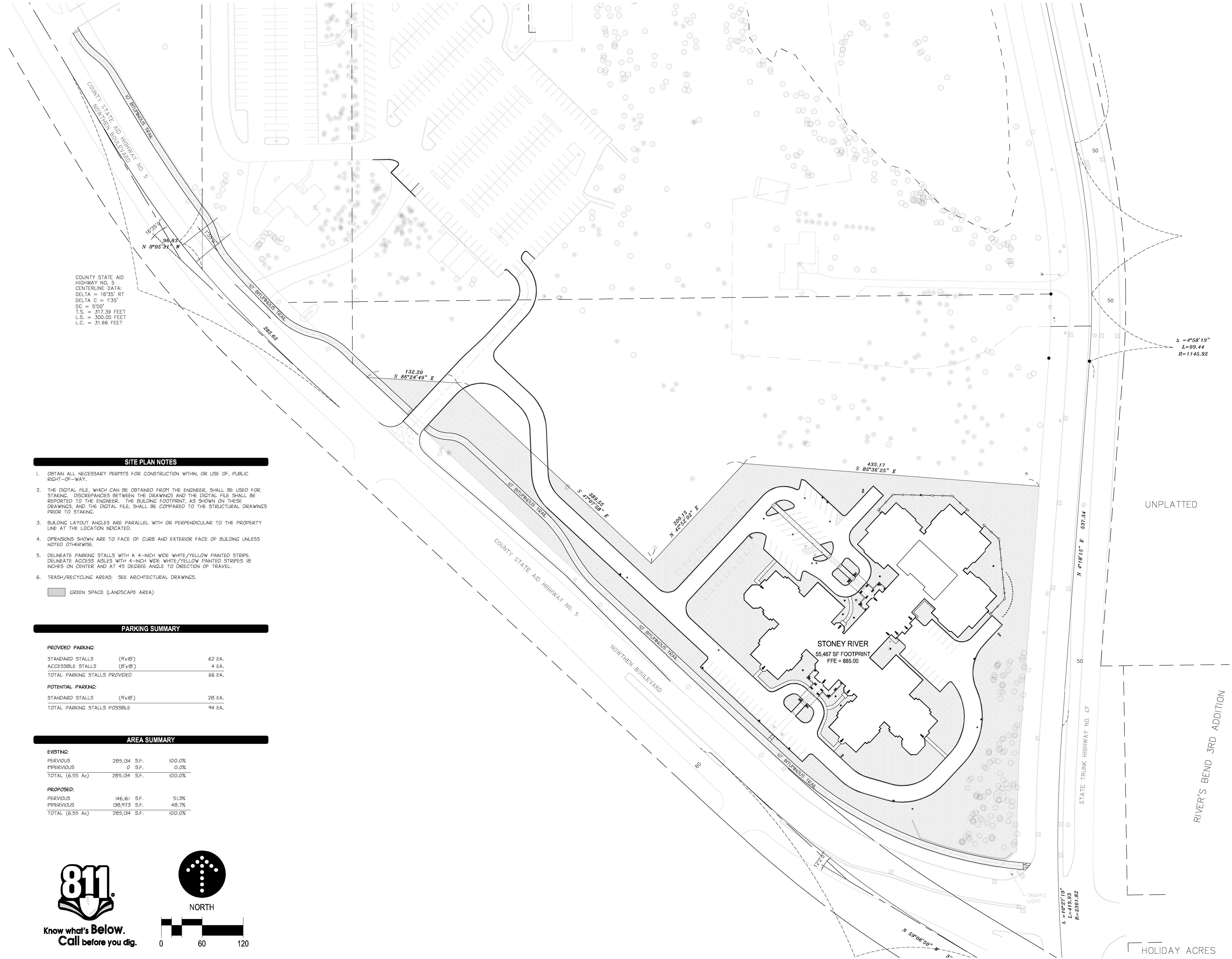
CITY SUBMITTAL
 JUNE 7, 2011

LANDFORM
 From Site to Finish

105 South Fifth Avenue Tel: 612-252-9070
 Suite 513 Fax: 612-252-9077
 Minneapolis, MN 55401 Web: landform.net
 FILE NAME C201FPG01.DWG

PROJECT NO. FPG11001

OVERALL
 SITE PLAN
C2.0



COUNTY STATE AID
 HIGHWAY NO. 5
 CENTERLINE DATA:
 DELTA = 16'35" RT
 DELTA C = 1'35"
 DC = 5'00"
 T.S. = 317.39 FEET
 L.S. = 300.00 FEET
 L.C. = 31.66 FEET

SITE PLAN NOTES

- OBTAIN ALL NECESSARY PERMITS FOR CONSTRUCTION WITH-IN, OR USE OF, PUBLIC RIGHT-OF-WAY.
- THE DIGITAL FILE, WHICH CAN BE OBTAINED FROM THE ENGINEER, SHALL BE USED FOR STAKING. DISCREPANCIES BETWEEN THE DRAWINGS AND THE DIGITAL FILE SHALL BE REPORTED TO THE ENGINEER. THE BUILDING FOOTPRINT, AS SHOWN ON THESE DRAWINGS, AND THE DIGITAL FILE, SHALL BE COMPARED TO THE STRUCTURAL DRAWINGS PRIOR TO STAKING.
- BUILDING LAYOUT ANGLES ARE PARALLEL WITH OR PERPENDICULAR TO THE PROPERTY LINE AT THE LOCATION INDICATED.
- DIMENSIONS SHOWN ARE TO FACE OF CURB AND EXTERIOR FACE OF BUILDING UNLESS NOTED OTHERWISE.
- DELINEATE PARKING STALLS WITH A 4-INCH WIDE WHITE/YELLOW PAINTED STRIPE. DELINEATE ACCESS AISLES WITH 4-INCH WIDE WHITE/YELLOW PAINTED STRIPES 18 INCHES ON CENTER AND AT 45 DEGREE ANGLE TO DIRECTION OF TRAVEL.
- TRASH/RECYCLING AREAS: SEE ARCHITECTURAL DRAWINGS.

GREEN SPACE (LANDSCAPE AREA)

PARKING SUMMARY

PROVIDED PARKING:		
STANDARD STALLS (9'x18')	62 EA.	
ACCESSIBLE STALLS (8'x18')	4 EA.	
TOTAL PARKING STALLS PROVIDED	66 EA.	
POTENTIAL PARKING:		
STANDARD STALLS (9'x18')	28 EA.	
TOTAL PARKING STALLS POSSIBLE	94 EA.	

AREA SUMMARY

EXISTING:		
PERVIOUS	285,134 S.F.	100.0%
IMPERVIOUS	0 S.F.	0.0%
TOTAL (6.55 Ac)	285,134 S.F.	100.0%
PROPOSED:		
PERVIOUS	146,161 S.F.	51.3%
IMPERVIOUS	138,973 S.F.	48.7%
TOTAL (6.55 Ac)	285,134 S.F.	100.0%

