

- PLAN NOTES:**
- SEE FOUNDATION PLAN ON S2 FOR INTERIOR CONC SLABS.
 - SEE ROOM AND FLOOR FINISH A2 PLAN FOR INTERIOR FINISHES.
 - ALL INTERIOR DIMENSIONS ARE FINISH DIMENSIONS UNLESS NOTED OTHERWISE.
 - ALL MASONRY OPENINGS MUST BE PLUMB, SQUARE AND LEVEL.
 - DOOR SWINGS TO COMPLY WITH LOCAL CODES.
 - REFERENCE SITE PLAN A0.0 FOR EXTERIOR SITE CONDITIONS.

X LETTER DENOTES DOOR TYPE. SEE SCHEDULE ON A5.

- KEYNOTES:**
- LIGHT GAUGE STEEL FRAMING ABOVE FOR SOFFIT SUPPORT
 - PROVIDE MIN 22" x 30" ACCESS PANEL IN TRUSSES
 - 1" CLEAR AIR SPACE BETWEEN WALK-IN COOLER AND FURRED CONC BLOCK WALL
 - CONCRETE SIDEWALK. SEE SITE PLAN
 - ROOF/CANOPY ABOVE
 - FRAMING TO ALLOW 5/8" GYP BD TO BE FLUSH WITH COOLER CORNER
 - NOT USED
 - 5/8" THK PLYWOOD FOR MOUNTING OF ELECTRICAL DISTRIBUTION DEVICES. SEE ELECTRICAL PLAN
 - 3-5/8" STL STD FRAMING ABOVE WALK-IN COOLER (BOTH ENDS)
 - 5/8" FROM EDGE OF COOLER (DETAIL 2/A5)
 - 24"x24" ACCESS OPENING IN FRAMING ABOVE COOLER WITH 3/4" PLYWOOD DOOR AT BOTH ENDS OF COOLER 12" FROM FRONT
 - DOWN SPOUT
 - LANDSCAPE AREA. SEE PLOT PLAN
 - PRECAST CONCRETE RECIRCULATION PIT. COORDINATE W/ CAR WASH MFR. PROVIDE STEEL GRATING AND FRAME AT PIT OPENING
 - PIPE BOLLARD (PAINT "SAFETY RED" SW40B1) SEE DETAIL 14/A5
 - MANHOLE COVER
 - FROST PROOF HOSE BIBB. MOUNT 20" AFF
 - SPRINKLER RISER & WATER METER
 - 4' DOG EARED STAGGERED SLAT WOOD FENCE (ALT. COMPOSITE SLAT FENCE)
 - CONTROL JOINT
 - ROCK MULCH
 - HEIGHT RESTRICTION BAR
 - CONCRETE APRON WITH IN SLAB SNOW MELT SYSTEM
 - STRIP DRAIN, CONNECT TO STORM SEWER (SEE DETAIL 6/A5.1)
 - CONTINUOUS STRUCTURAL STOOP @ DOORS - SLOPE CONC. AWAY FROM DOOR 1/4" PER FT - HIGH POINT OF STOOP SHALL BE 1/4" BELOW T.O.S. ELEVATION (TYPICAL)
 - TRASH & RECYCLING ENCLOSURE
 - SEE SITE PLAN FOR ALL CURBING, WALKS, & LANDSCAPING
 - WHEEL STOPS BY OWNER
 - ADA PARKING STALL SIGNAGE
 - CONCRETE APRON SLOPE AWAY FROM STRUCTURES
 - CONCRETE SLAB (COORDINATE WITH EQUIPMENT SUPPLIER)
 - DOWN SPOUT/SIDEWALK TRENCH DRAIN
 - NOT USED
 - NOT USED

1 A1 FLOOR PLAN 1/4" = 1'-0"



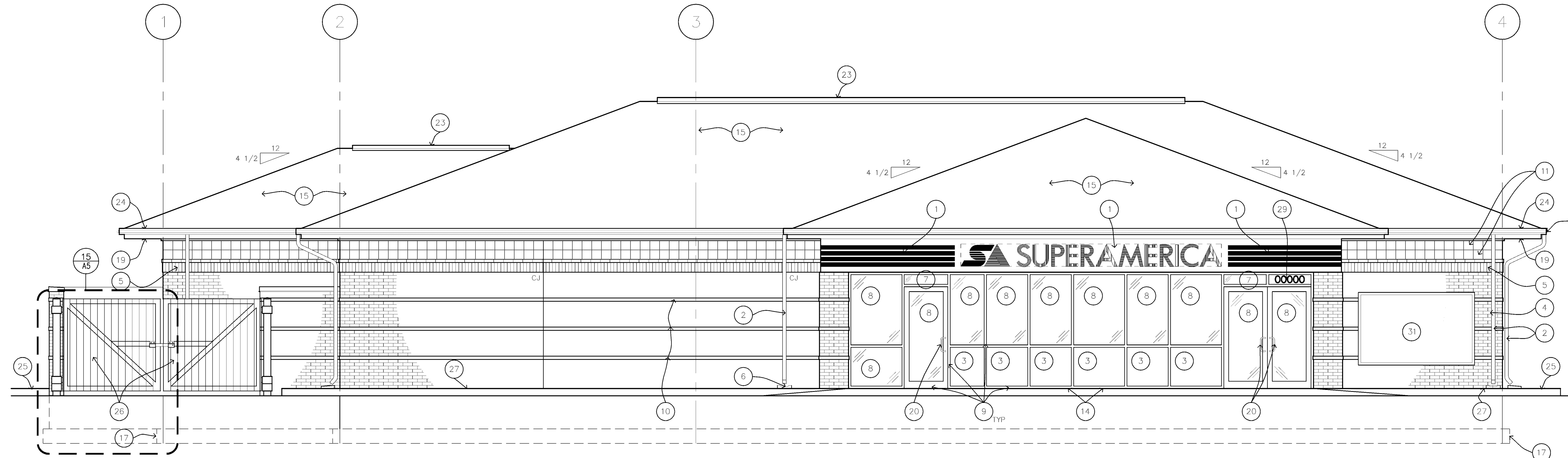
REVISIONS

▲	City Submittal	8.5.2012
▲	City Submittal Comments	10.2.12

FLOOR PLAN

DATE	8.29.2012
A1	
PROJECT NO.	00000

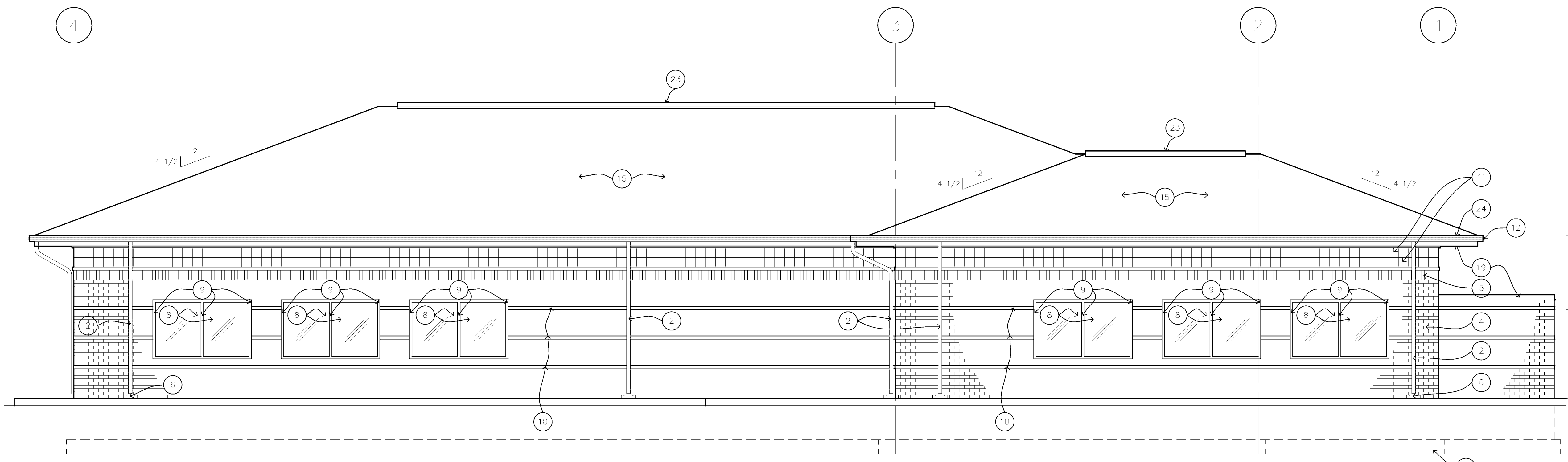
- PRELIMINARY/NOT FOR CONSTRUCTION
- PERMIT/BD SET
- CONSTRUCTION SET
- AS-BUILT SET
- NOT TO SCALE



1 FRONT ELEVATION
1/4" = 1'-0"

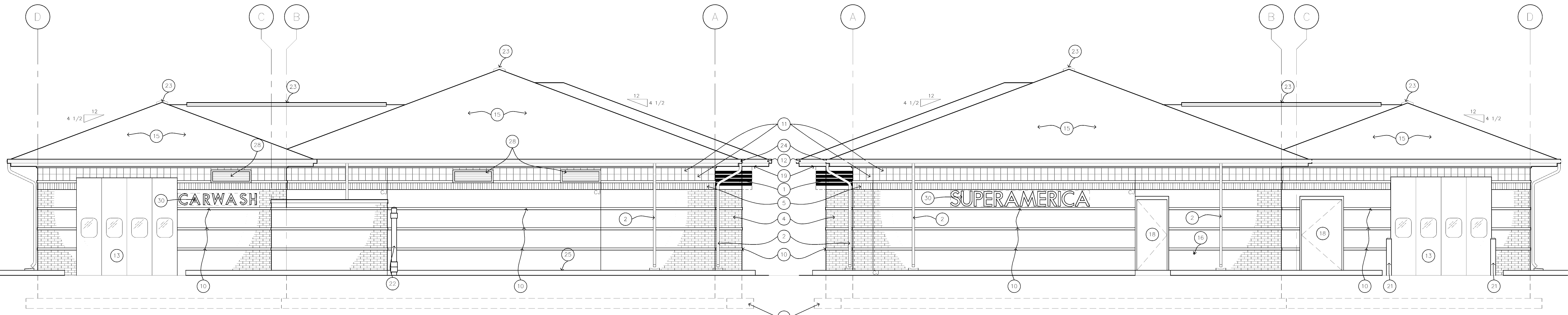
- TOP OF TRUSS 119'-9"
- TOP OF GUTTER 110'-11 1/2"
- BOTTOM OF SOLDIER COURSE 108'-0"
- BOTTOM OF BRICK BANDING 106'-0"
- BOTTOM OF BRICK BANDING 104'-0"
- BOTTOM OF BRICK BANDING 102'-0"
- FINISH FLOOR 100'-0"

- KEYNOTES:**
- 1 WHITE LED ILLUMINATED PRE-FINISHED PANAFLEX FACE PANEL WITH ORICAL BLUE TRANS VINYL LETTERS AND TRANS 3M "REGAL RED" VINYL STRIPES. PANELS WRAP SIDES AND EXTEND TO INSIDE CORNER. SEE SPEC
 - 2 PRE-FINISHED METAL DOWN-SPOUT COLOR: DARK BRONZE PROVIDE HEAT TAPE AT ALL LOCATIONS
 - 3 1" METAL SURFACED INSULATED PANELS BETWEEN EXIT DOORS COLOR: DARK BRONZE
 - 4 FACE BRICK, GENERAL SHALE BRICK, RALEIGH COURT, MODULAR, 36-10-591
 - 5 FACE BRICK SOLDIER COURSE
 - 6 PROVIDE SPLASH BLOCKS IN GREEN AREAS (SEE SITE PLAN FOR GREEN AREAS)
 - 7 1" INSUL CLEAR GLASS
 - 8 1" INSUL CLEAR TEMPERED GLASS (TYP)
 - 9 2" x 4 1/2" PRE-FINISHED DARK BRONZE ANODIZED ALUM. FLUSH GLAZE SYSTEM
 - 10 BRICK ACCENT BAND, INTERSTATE BRICK, TUMBLEWEED, MODULAR
 - 11 8" x 8" INTERSTATE BRICK, TUMBLEWEED, MODULAR. OPTIONAL: USE 8" x 16" SIZE W/ SINGLE SCORE.
 - 12 LED ACCENT LIGHTING
 - 13 BI-FOLD CARWASH DOOR
 - 14 SLOPED ACCESS.
 - 15 COMPOSITE SHINGLES. SEE SPECS
 - 16 FROST PROOF HOSE BIBB. MOUNT 20" AFF
 - 17 OUTLINE OF FOUNDATION. SEE FOUNDATION PLAN
 - 18 EXTERIOR HOLLOW METAL DOORS AND FRAMES TO BE PAINTED COLOR: MATCH BRICK.
 - 19 PRE-FINISH METAL FASCIA & TRIM COLOR: CHARCOAL GREY
 - 20 OFFSET PULL ON OUTSIDE OF DOOR
 - 21 PIPE BOLLARD
 - 22 TRASH ENCLOSURE GATE
 - 23 RIDGE VENT
 - 24 PRE-FINISHED METAL CUTTER TRIM COLOR: RED
 - 25 LANDSCAPE AREA. SEE LANDSCAPE PLAN.
 - 26 COMPOSITE WOOD TRASH ENCLOSURE GATE PICKETS
 - 27 SIDEWALK. SEE SITE PLAN
 - 28 42" x 16" PRE-FINISHED INTAKE AIR GRILLES. COLOR: CHARCOAL GREY
 - 29 REFLECTIVE DIE CUT VINYL 8" HIGH NUMBERS. VERIFY ADDRESS NUMBER WITH OWNERS REP.
 - 30 ILLUMINATED CHANNEL LETTERS
 - 31 ILLUMINATED READER BOARD
 - 32 ILLUMINATED CANOPY LOGO SIGN



2 REAR ELEVATION
1/4" = 1'-0"

- TOP OF TRUSS 116'-6"
- TOP OF GUTTER 110'-11 1/2"
- BOTTOM OF SOLDIER COURSE 108'-0"
- BOTTOM OF BRICK BANDING 106'-0"
- BOTTOM OF BRICK BANDING 104'-0"
- BOTTOM OF BRICK BANDING 102'-0"
- FINISH FLOOR 100'-0"



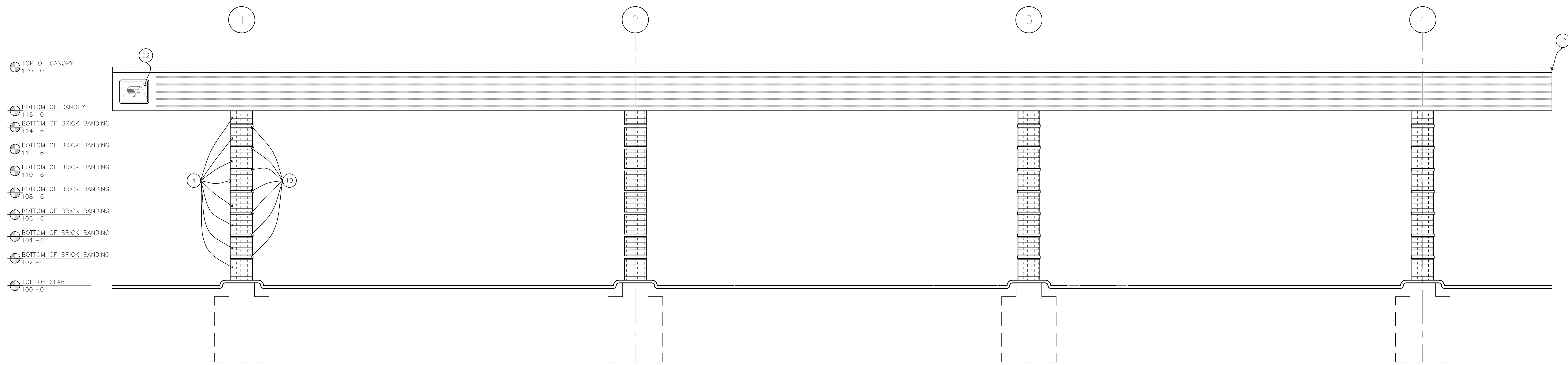
3 LEFT ELEVATION
1/4" = 1'-0"

3 RIGHT ELEVATION
1/4" = 1'-0"

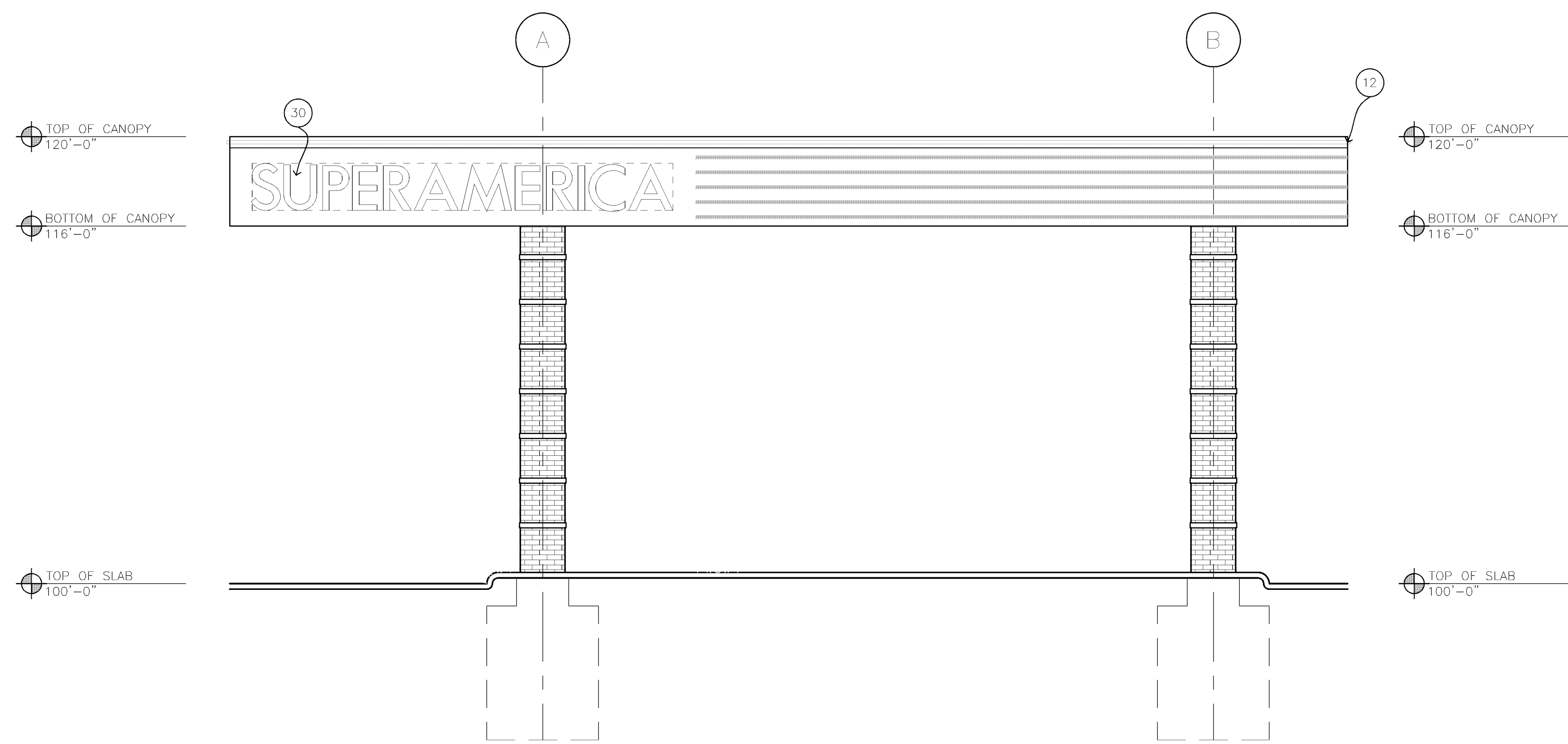
REVISIONS

City Submittal	9.5.2012
City Submittal Comments	10.2.12

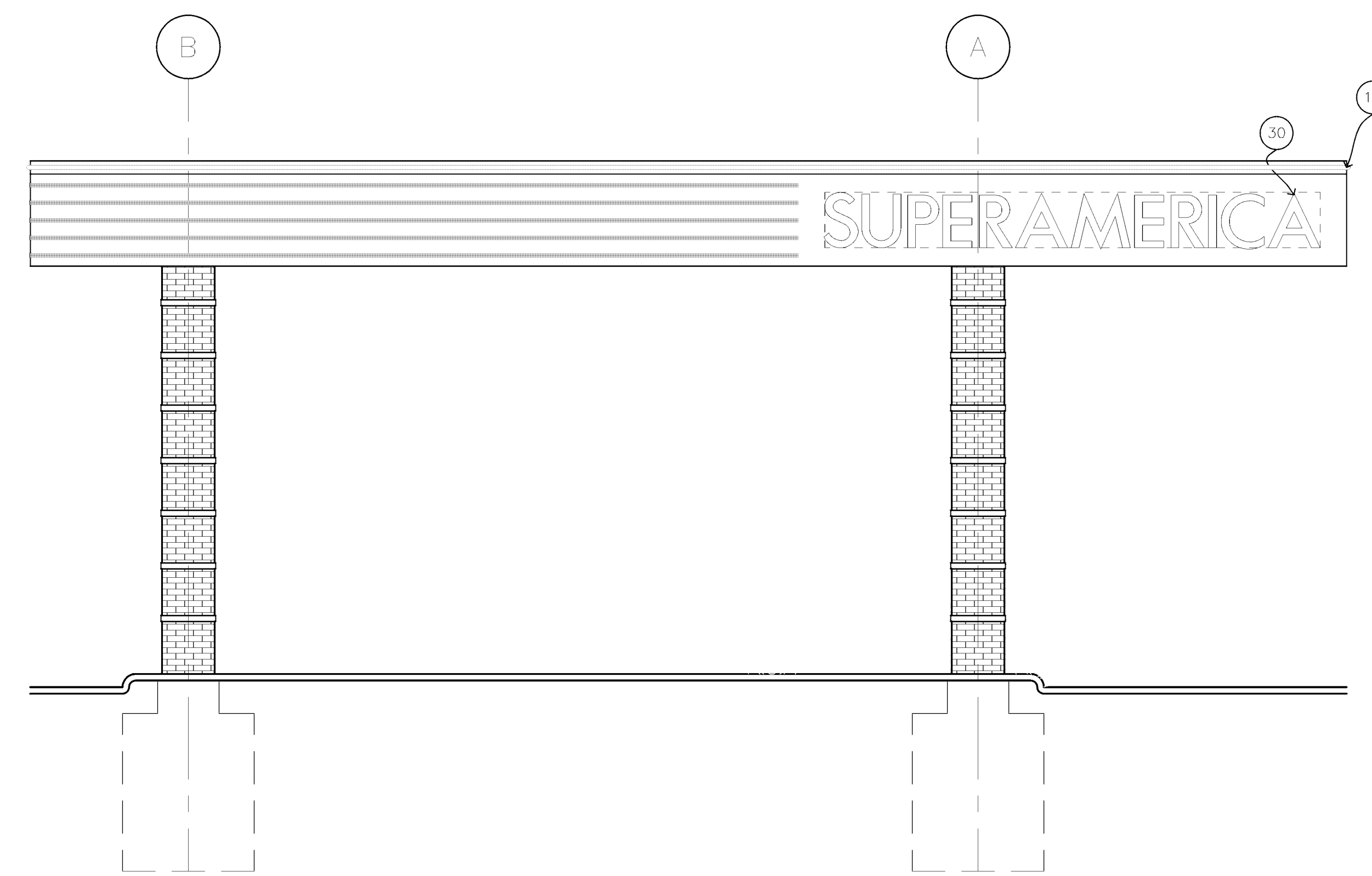
- PRELIMINARY/NOT FOR CONSTRUCTION
- PERMIT/BD SET
- CONSTRUCTION SET
- AS-BUILT SET
- NOT TO SCALE



1 GAS ISLAND CANOPY
 CA1 1/4" = 1'-0"



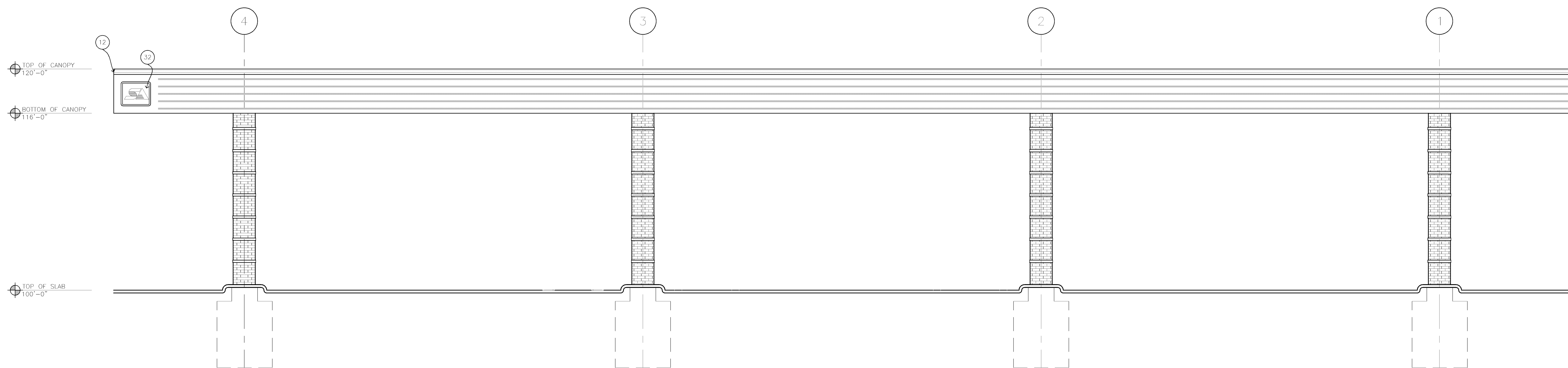
2 GAS ISLAND CANOPY
 CA1 1/4" = 1'-0"



3 GAS ISLAND CANOPY
 CA1 1/4" = 1'-0"

- KEYNOTES:**
- 4 FACE BRICK, GENERAL SHALE BRICK, RALEIGH COURT, MODULAR, 36-10-591
 - 10 BRICK ACCENT BAND, INTERSTATE BRICK, TUMLEWEED, MODULAR
 - 12 LED ACCENT LIGHTING
 - 30 ILLUMINATED CHANNEL LETTERS
 - 32 ILLUMINATED CANOPY LOGO SIGN

SEE CANOPY AND STRUCTURAL PLANS FOR FURTHER INFORMATION



4 GAS ISLAND CANOPY
 CA1 1/4" = 1'-0"

- PRELIMINARY/NOT FOR CONSTRUCTION
- PERMIT/BD SET
- CONSTRUCTION SET
- AS-BUILT SET
- NOT TO SCALE