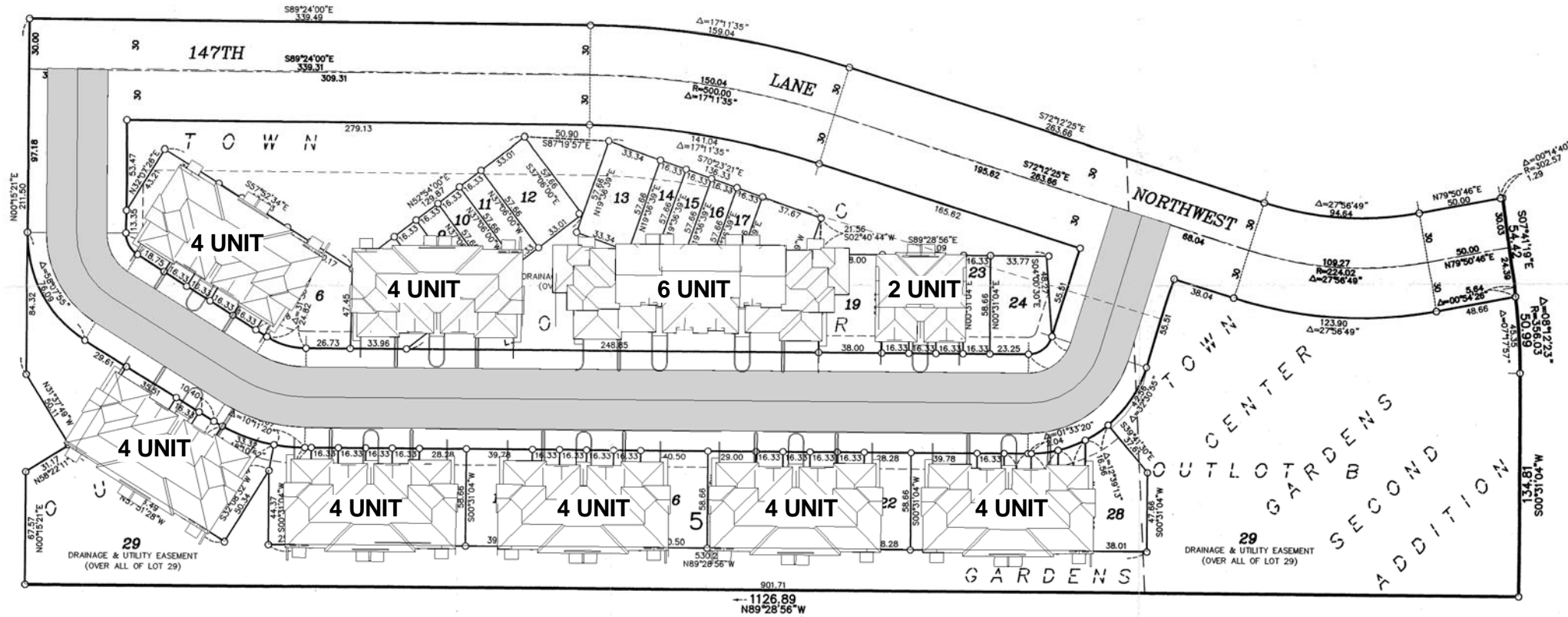


# TOWN CENTER GARDENS THIRD ADDITION

## INSET A



① Site  
1" = 40'-0"

DRAINAGE AND UTILITY  
EASEMENTS ARE SHOWN THUS:  
(NO SCALE)



PBA ARCHITECTS, INC.  
1851 BIRCH LANE NE  
LONGVILLE, MN. 56655  
TEL: (612)353-4753  
FAX: (612)353-4782

PROPOSED TOWN CENTER GARDENS HOUSING

PROPOSED SITE PLAN

RAMSEY, MINNESOTA



PBA ARCHITECTS, INC.  
1851 BIRCH LANE NE  
LONGVILLE, MN. 56655  
TEL: (612)353-4753  
FAX: (612)353-4782

Date 12/30/11  
Scale 1" = 40'-0"

A101