

PODAWILTZ DEVELOPMENT
 3601 18TH STREET SOUTH SUITE 117
 ST. CLOUD, MINNESOTA 56301
 Phone: 320-255-1719 Fax: 320-255-5128

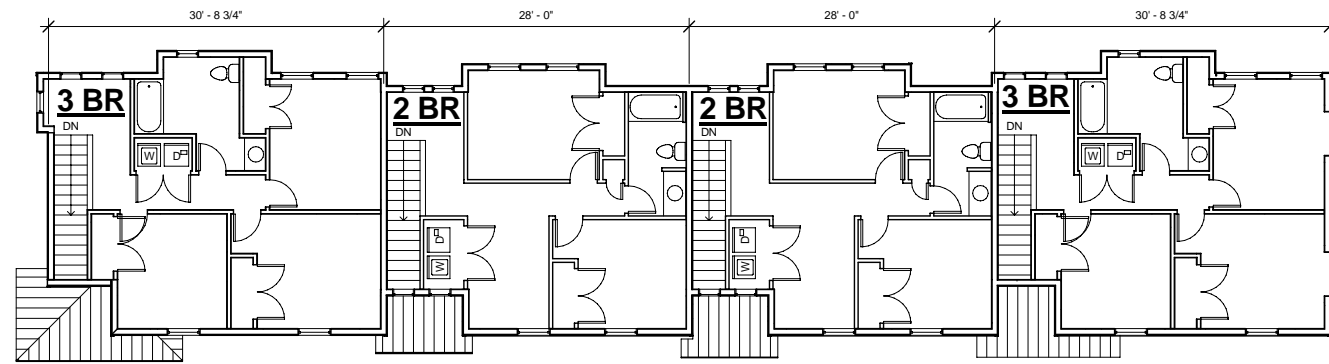
PROPOSED TOWN CENTER GARDENS HOUSING
 PROPOSED SITE PLAN

RAMSEY, MINNESOTA

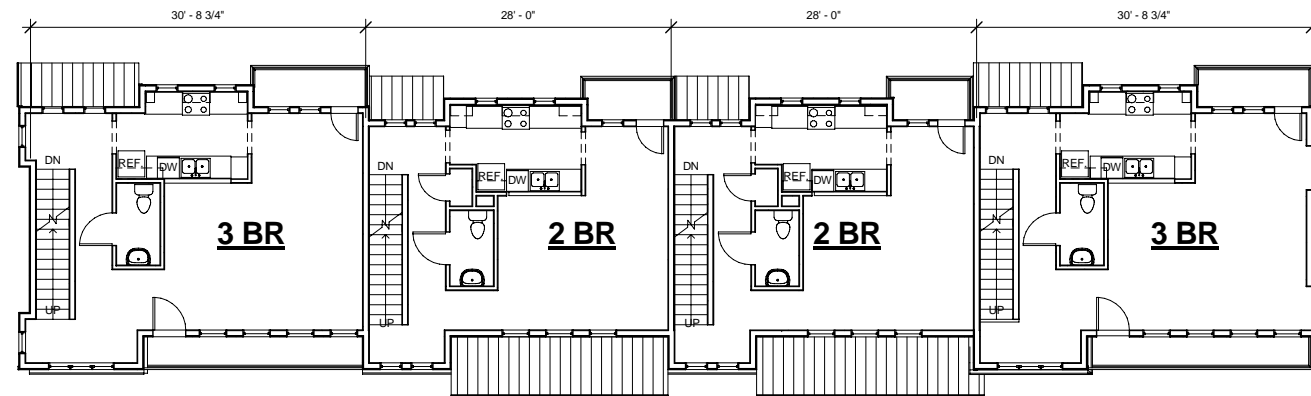
Date: 3/6/2012
 Scale: 1" = 50'-0"



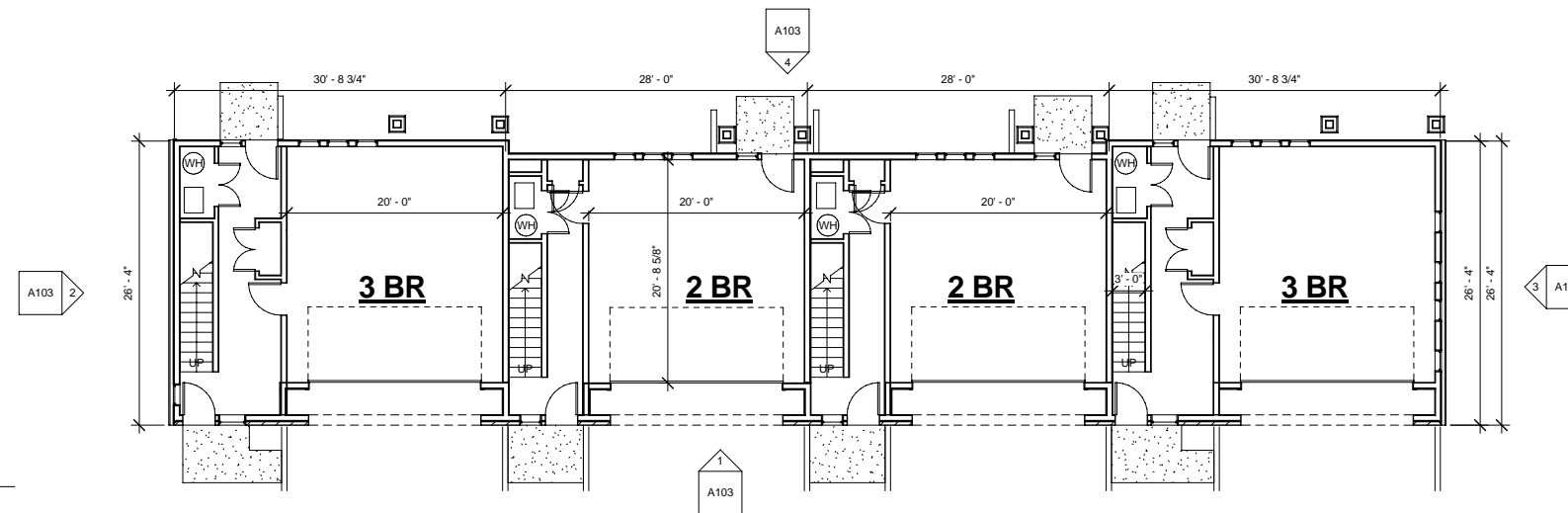
PBA ARCHITECTS, INC.
 1851 BIRCH LANE NE
 LONGVILLE, MN 56655
 TEL: (612)353-4753
 FAX: (612)353-4782
A101



③ Level 3
1/8" = 1'-0"



② Level 2
1/8" = 1'-0"



① Level 1
1/8" = 1'-0"

PODAWILTZ DEVELOPMENT
3601 18TH STREET SOUTH SUITE 117
ST. CLOUD, MINNESOTA 56301
Phone: 320-255-1719 Fax: 320-255-5128

PROPOSED TOWN CENTER GARDENS HOUSING

FLOOR PLANS-4 UNIT BLDG

RAMSEY, MINNESOTA

Date 3/7/2012
Scale 1/8" = 1'-0"

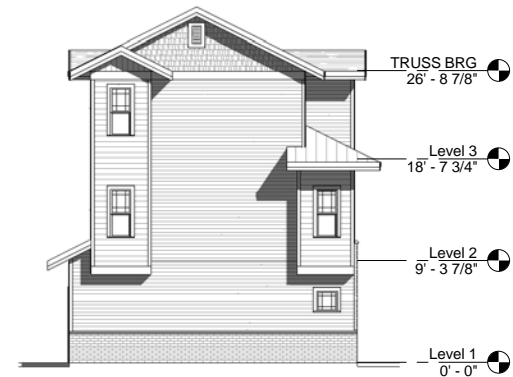


PBA ARCHITECTS, INC.
1851 BIRCH LANE NE
LONGVILLE, MN 56655
TEL: (612)353-4753
FAX: (612)353-4782

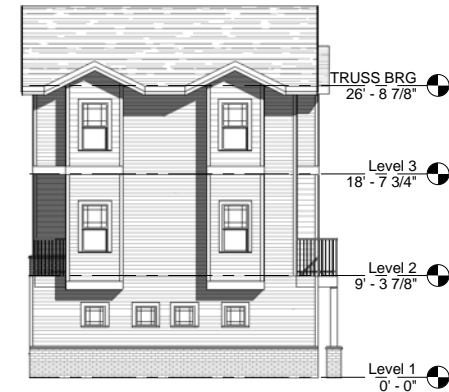
A102



④ REAR
1/8" = 1'-0"



② LEFT
1/8" = 1'-0"



③ RIGHT
1/8" = 1'-0"



① FRONT
1/8" = 1'-0"

PODAWILTZ DEVELOPMENT
3601 18TH STREET SOUTH SUITE 117
ST. CLOUD, MINNESOTA 56301
Phone: 320-255-1719 Fax: 320-255-5128

PROPOSED TOWN CENTER GARDENS HOUSING
ELEVATIONS-4 UNIT BLDG

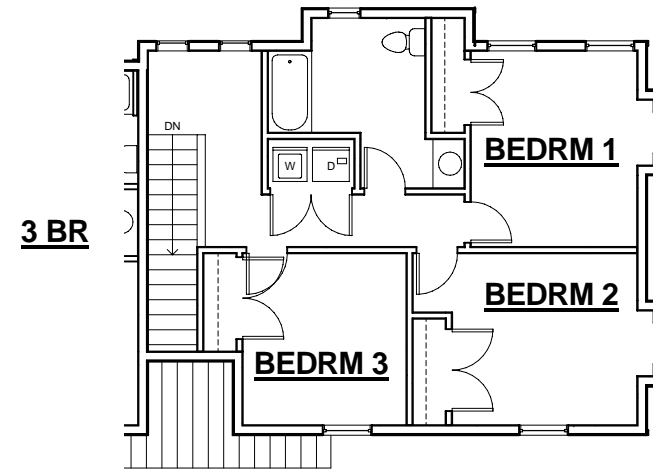
RAMSEY, MINNESOTA

Date 3/7/2012
Scale 1/8" = 1'-0"



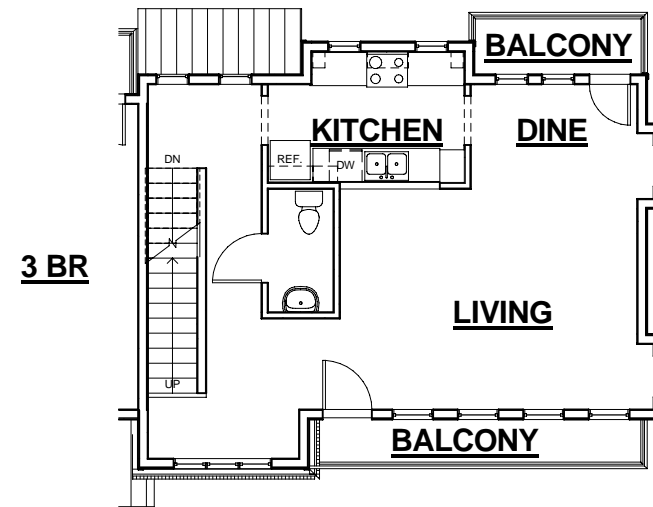
PBA ARCHITECTS, INC.
1851 BIRCH LANE NE
LONGVILLE, MN 56655
TEL: (612)353-4753
FAX: (612)353-4782

A103



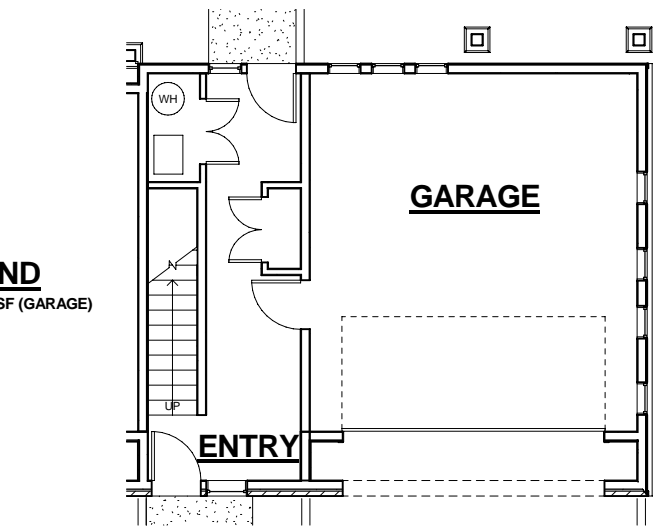
3 BR

③ ENLARGED LEVEL 3
3/16" = 1'-0"



3 BR

② ENLARGED LEVEL 2
3/16" = 1'-0"



① ENLARGED LEVEL 1
3/16" = 1'-0"

3 BR UNIT END
 1ST FLR...264 SF + 476 SF (GARAGE)
 2ND FLR...651 SF
 3RD FLR...687 SF
 TOTAL...1,602 SF

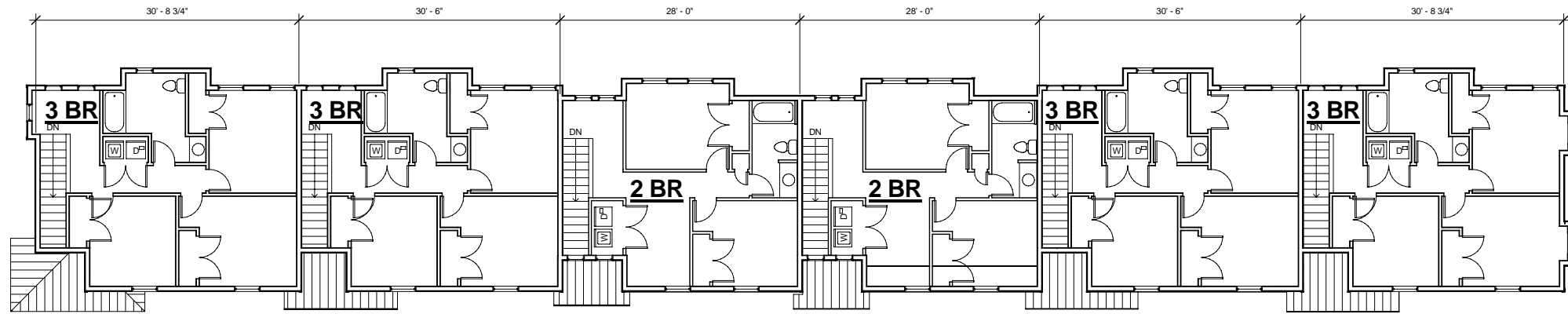
PROPOSED TOWN CENTER GARDENS HOUSING
 UNIT PLANS

PODAWILTZ DEVELOPMENT
 3601 18TH STREET SOUTH SUITE 117
 ST.CLOUD, MINNESOTA 56301
 Phone: 320-255-1719 Fax: 320-255-5128

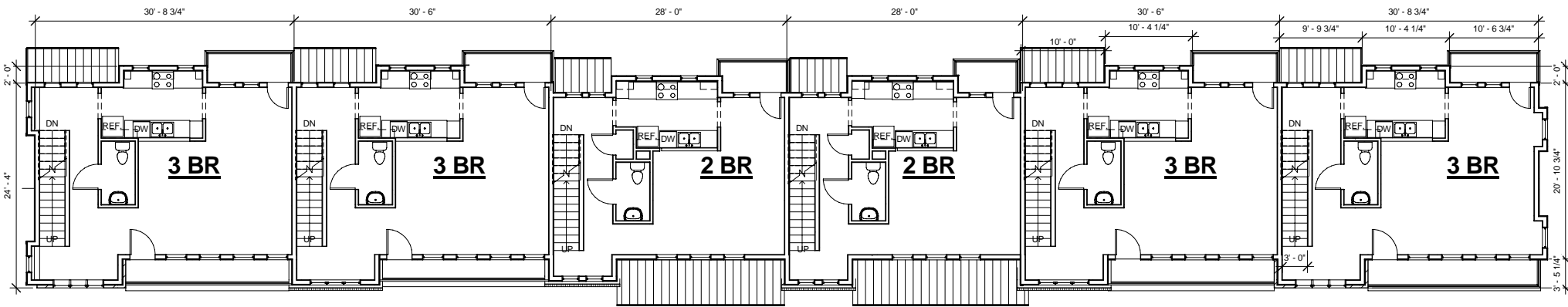
RAMSEY, MINNESOTA

Date 3/7/2012
 Scale 3/16" = 1'-0"

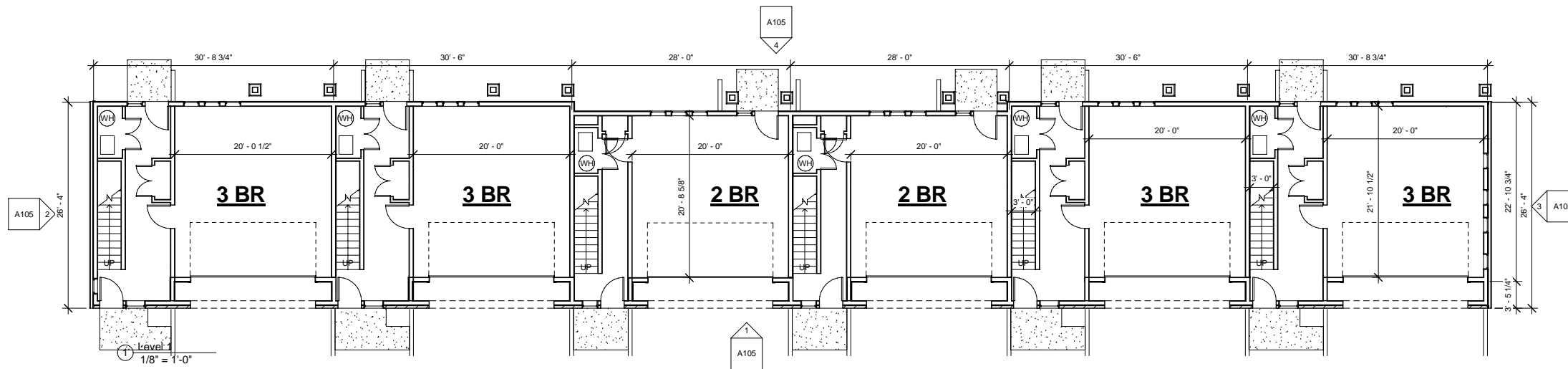
PBA ARCHITECTS
 ARCHITECTS
 PBA ARCHITECTS, INC.
 1851 BIRCH LANE NE
 LONGVILLE, MN 56655
 TEL: (612)353-4753
 FAX: (612)353-4782
A109



③ Level 3
1/8" = 1'-0"



② Level 2
1/8" = 1'-0"



① Level 1
1/8" = 1'-0"

PROPOSED TOWN CENTER GARDENS HOUSING

FLOOR PLANS-6 UNIT BLDG 'A'

PODAWILITZ DEVELOPMENT
3601 18TH STREET SOUTH SUITE 117
ST. CLOUD, MINNESOTA 56301
Phone: 320-255-1719 Fax: 320-255-5128

RAMSEY, MINNESOTA

Date 3/7/2012
Scale 1/8" = 1'-0"

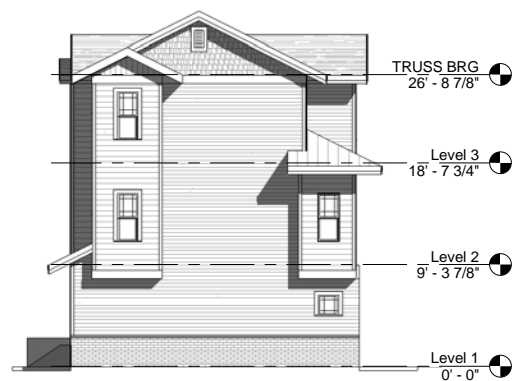


PBA ARCHITECTS, INC.
1851 BIRCH LANE NE
LONGVILLE, MN 56655
TEL: (612)353-4753
FAX: (612)353-4782

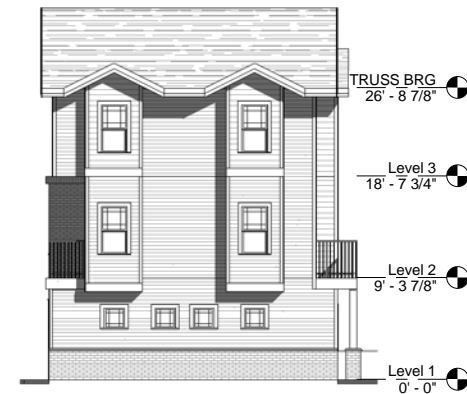
A104



④ REAR
1/8" = 1'-0"



② LEFT
1/8" = 1'-0"



③ RIGHT
1/8" = 1'-0"



① FRONT
1/8" = 1'-0"

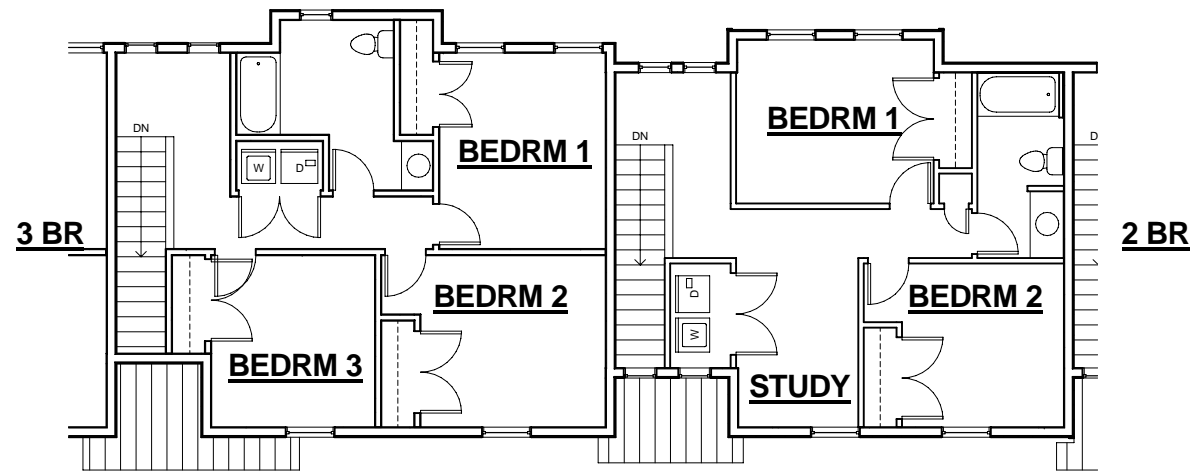
PODAWILTZ DEVELOPMENT
3601 18TH STREET SOUTH SUITE 117
ST. CLOUD, MINNESOTA 56301
Phone: 320-255-1719 Fax: 320-255-5128

PROPOSED TOWN CENTER GARDENS HOUSING
ELEVATIONS-6 UNIT BLDG 'A'

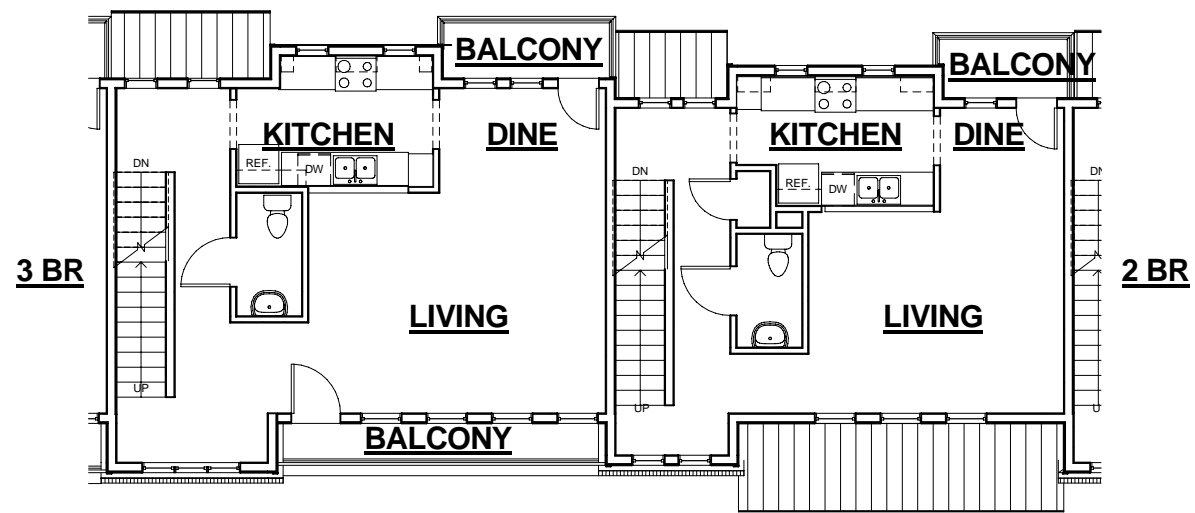
RAMSEY, MINNESOTA

Date 3/7/2012
Scale 1/8" = 1'-0"

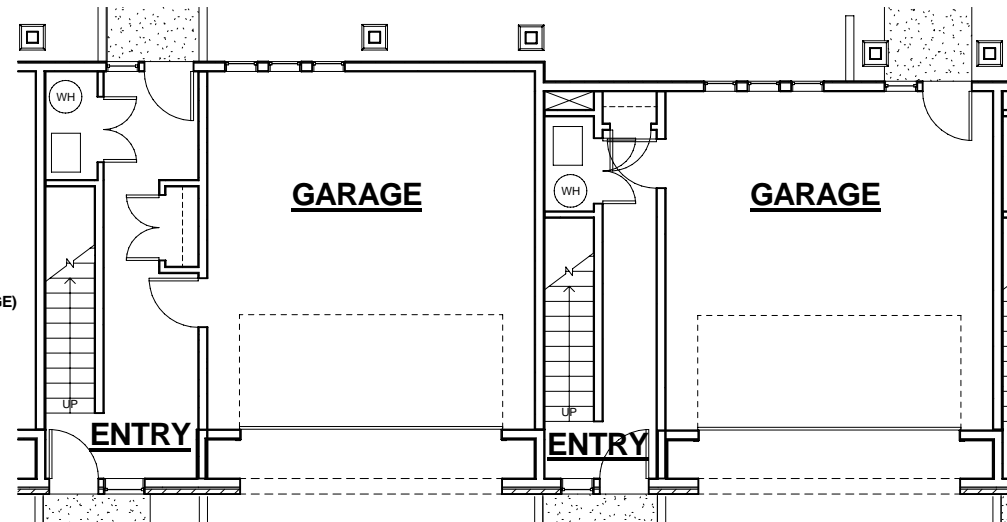
PBA ARCHITECTS
PBA ARCHITECTS, INC.
1851 BIRCH LANE NE
LONGVILLE, MN 56655
TEL.: (612)353-4753
FAX: (612)353-4782
A105



③ ENLARGED LEVEL 3
3/16" = 1'-0"



② ENLARGED LEVEL 2
3/16" = 1'-0"

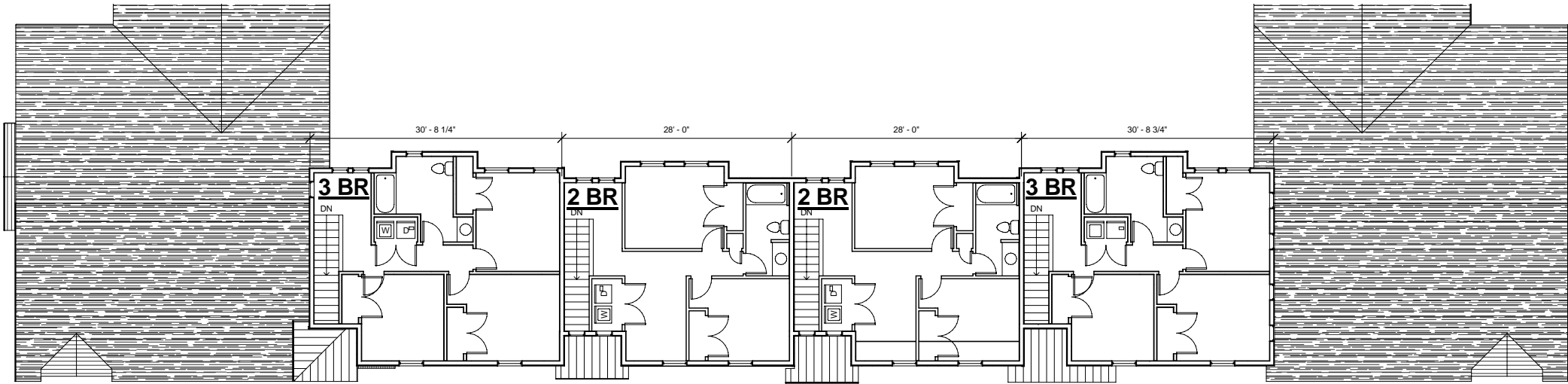


① ENLARGED LEVEL 1
3/16" = 1'-0"

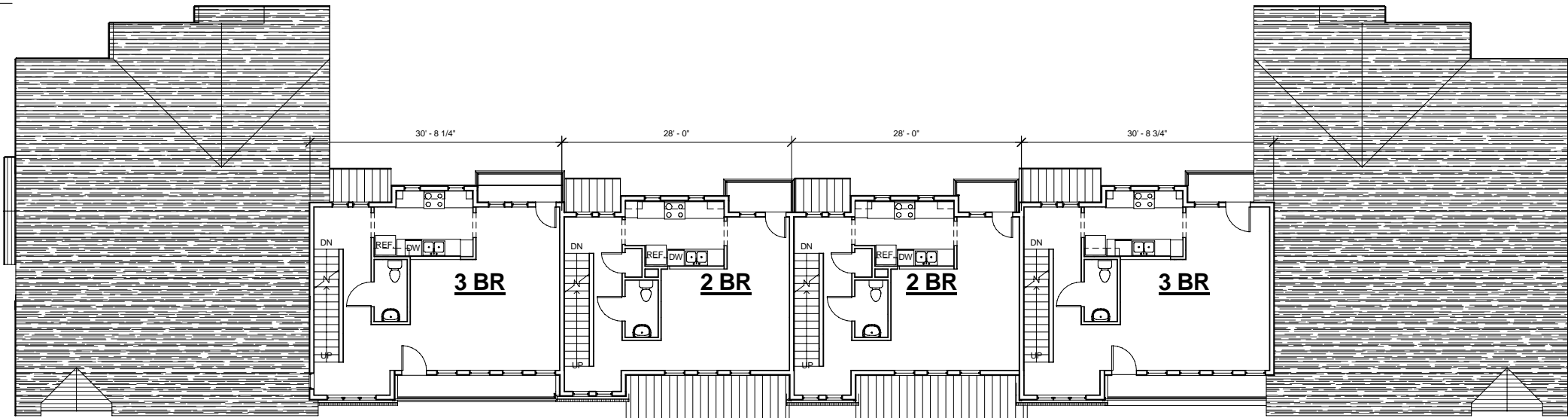
3 BR UNIT
1ST FLR...264 SF + 476 SF (GARAGE)
2ND FLR...651 SF
3RD FLR...687 SF
TOTAL...1,602 SF

2 BR UNIT
1ST FLR...190 SF + 451 SF (GARAGE)
2ND FLR...559 SF
3RD FLR...596 SF
TOTAL...1,345 SF

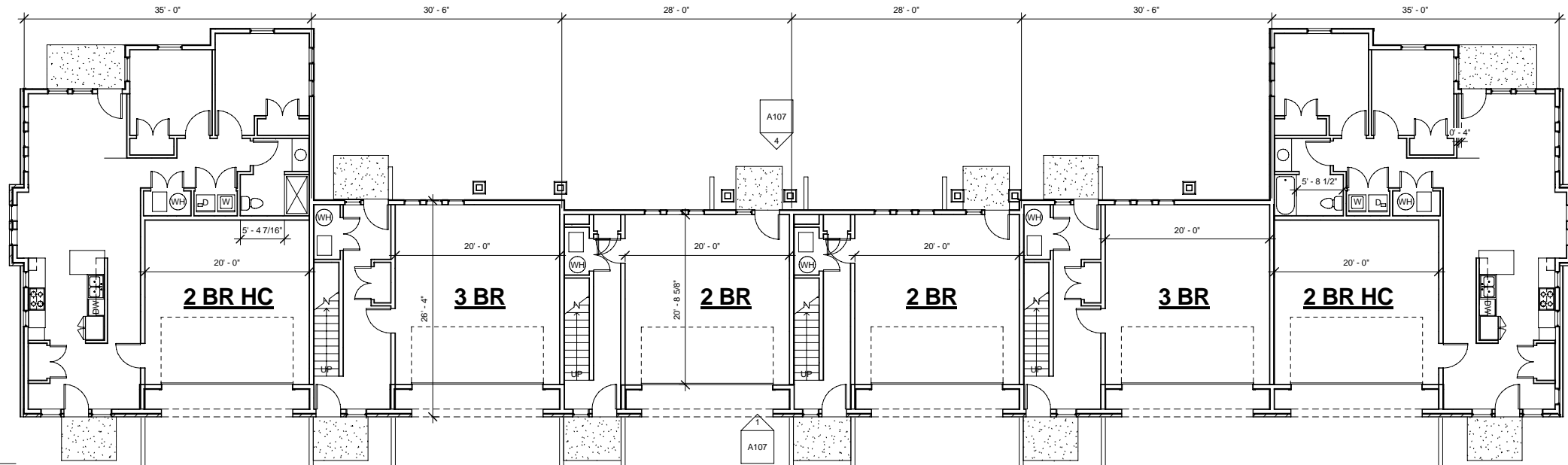
③ Level 3
1/8" = 1'-0"



② Level 2
1/8" = 1'-0"



① Level 1
1/8" = 1'-0"



PODAWILTZ DEVELOPMENT
3601 18TH STREET SOUTH SUITE 117
ST. CLOUD, MINNESOTA 56301
Phone: 320-255-1719 Fax: 320-255-5128

PROPOSED TOWN CENTER GARDENS HOUSING

FLOOR PLANS-6 UNIT BLDG 'B'

RAMSEY, MINNESOTA

Date 3/6/2012
Scale 1/8" = 1'-0"

A107



PBA ARCHITECTS, INC.
1851 BIRCH LANE NE
LONGVILLE, MN 56655
TEL: (612)353-4753
FAX: (612)353-4782
A106



④ REAR
1/8" = 1'-0"



② LEFT
1/8" = 1'-0"



③ RIGHT
1/8" = 1'-0"



① FRONT
1/8" = 1'-0"

PROPOSED TOWN CENTER GARDENS HOUSING
ELEVATIONS-6 UNIT BLDG 'B'

PODAWILTZ DEVELOPMENT
3601 18TH STREET SOUTH SUITE 117
ST. CLOUD, MINNESOTA 56301
Phone: 320-255-1719 Fax: 320-255-5128

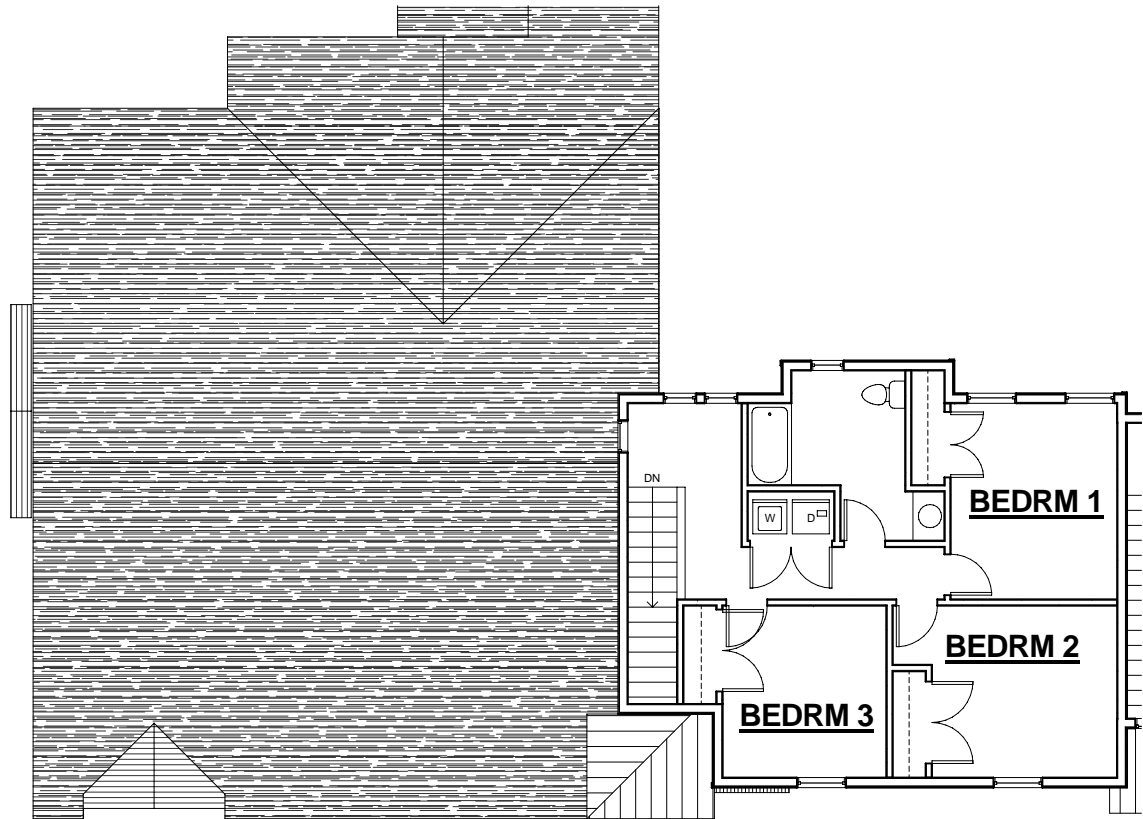
RAMSEY, MINNESOTA

Date 3/6/2012
Scale 1/8" = 1'-0"



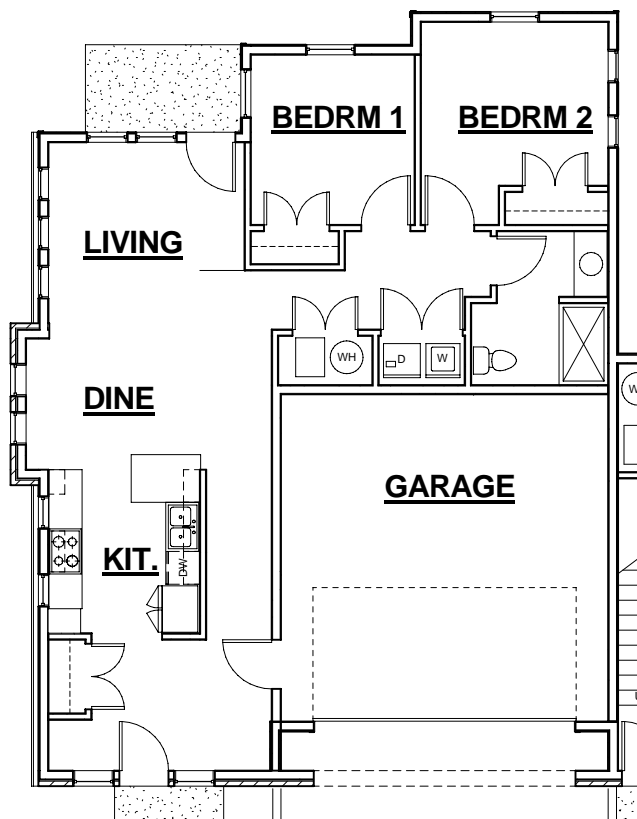
PBA ARCHITECTS, INC.
1851 BIRCH LANE NE
LONGVILLE, MN 56655
TEL.: (612)353-4753
FAX: (612)353-4782

A107



3 BR

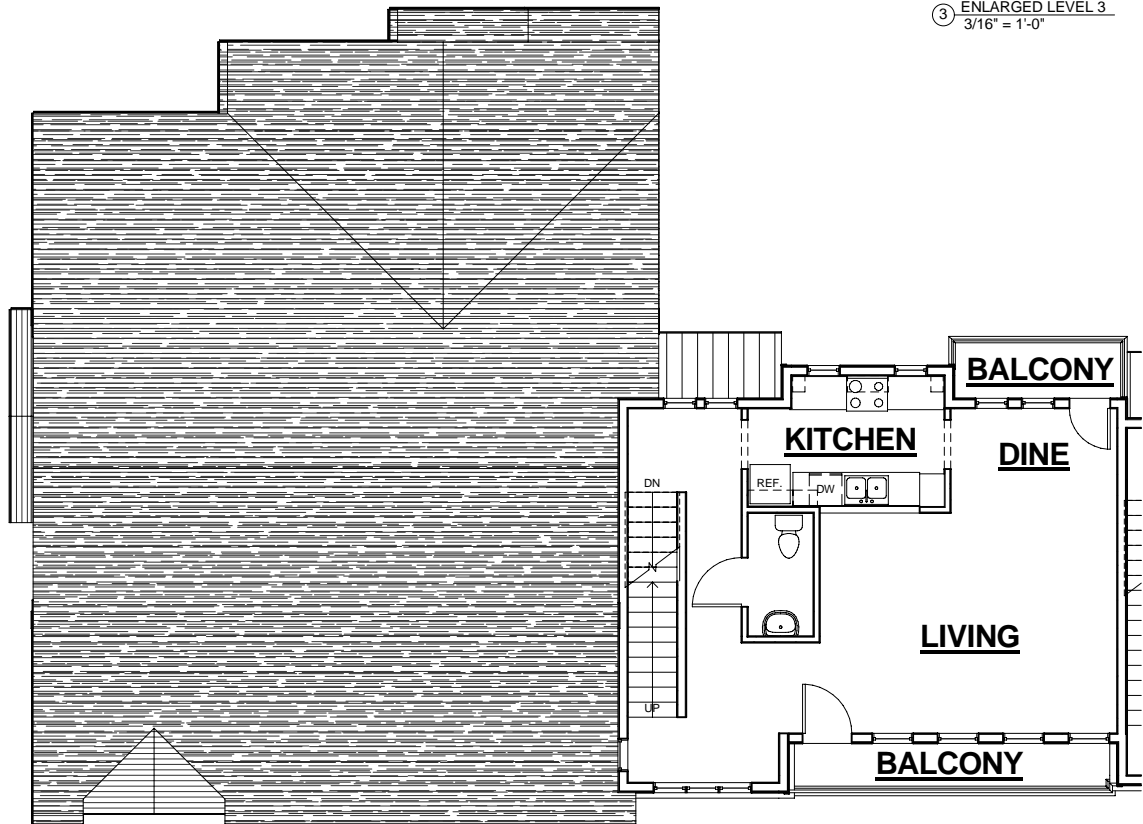
③ ENLARGED LEVEL 3
3/16" = 1'-0"



2 BR HC

FLR AREA...1,076 SF + 430 SF (GARAGE)

① ENLARGED LEVEL 1
3/16" = 1'-0"



3 BR

② ENLARGED LEVEL 2
3/16" = 1'-0"

PROPOSED TOWN CENTER GARDENS HOUSING

UNIT PLANS

PODAWILTZ DEVELOPMENT
3601 18TH STREET SOUTH SUITE 117
ST. CLOUD, MINNESOTA 56301
Phone: 320-255-1719 Fax: 320-255-5128

RAMSEY, MINNESOTA

Date 3/6/2012
Scale 3/16" = 1'-0"



PBA ARCHITECTS, INC.
1851 BIRCH LANE NE
LONGVILLE, MN 56655
TEL.: (612)353-4753
FAX: (612)353-4782

A110