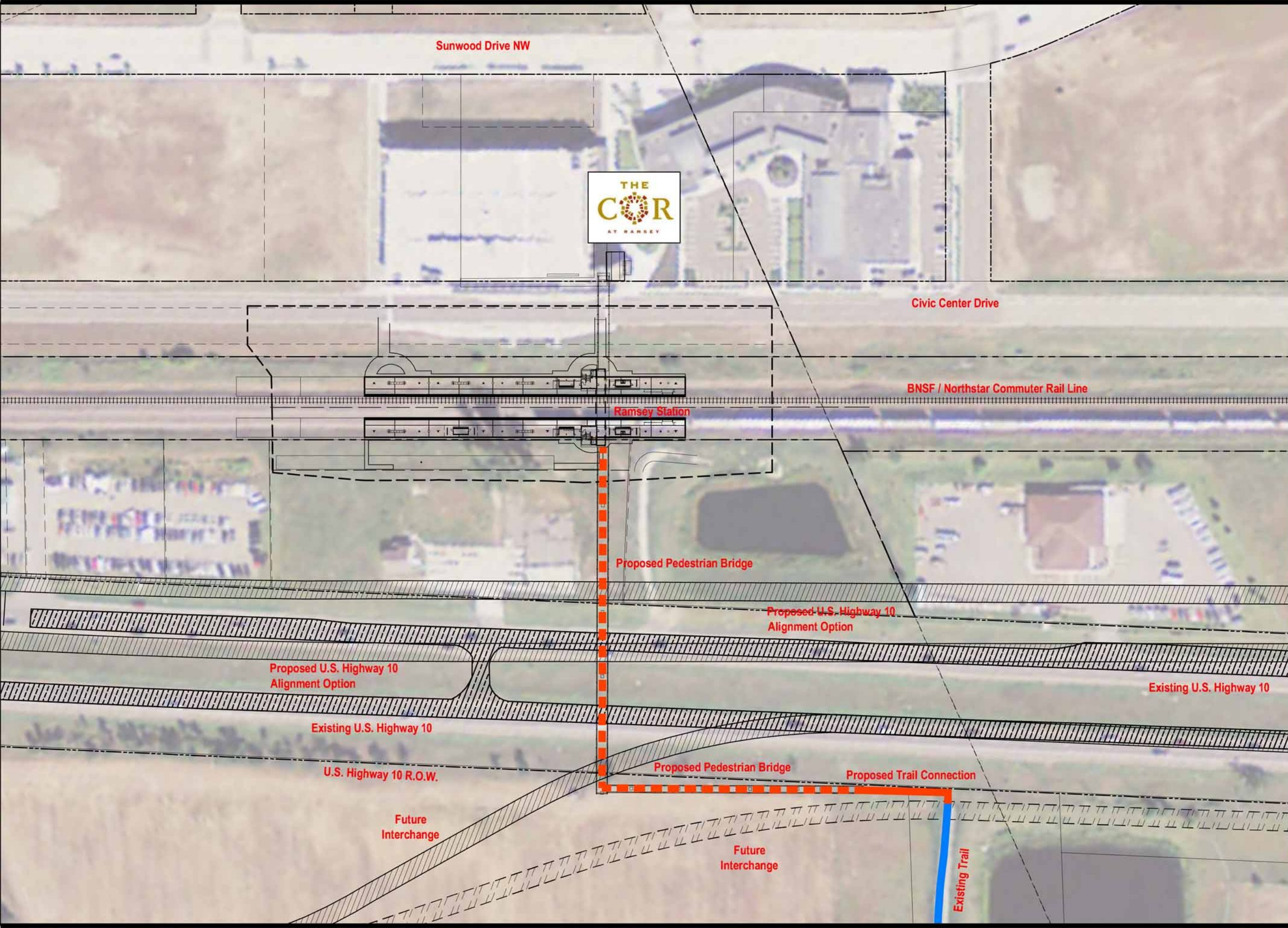


**LEGEND**

-  PROPOSED TRAIL LOCATION
-  PROPOSED PEDESTRIAN BRIDGE
-  EXISTING TRAIL



LANDSCAPE ARCHITECTURE, INC.  
 Landscape Architecture  
 Master Planning & Sustainable Design  
 856 RAYMOND AVENUE, SUITE C  
 ST. PAUL, MN 55114  
 TEL: 651.646.1020  
 Web: www.landarcinc.com

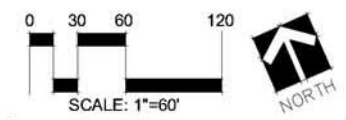
PROJECT NAME:

**Hwy. 10 & 169 Pedestrian Bridge**

PROJECT LOCATION:  
Ramsey, Minnesota

DRAWING TITLE:

**SITE PLAN**



DRAWN BY: SPM  
 CHECKED BY: SPM  
 DATE: JULY 31, 2011

**L1**