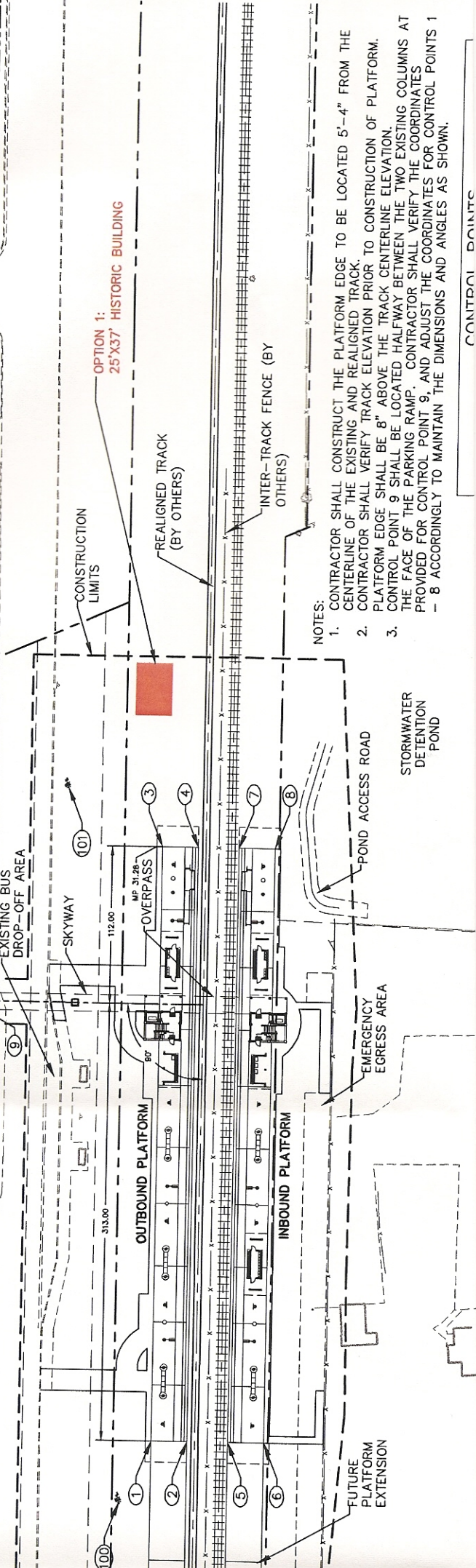
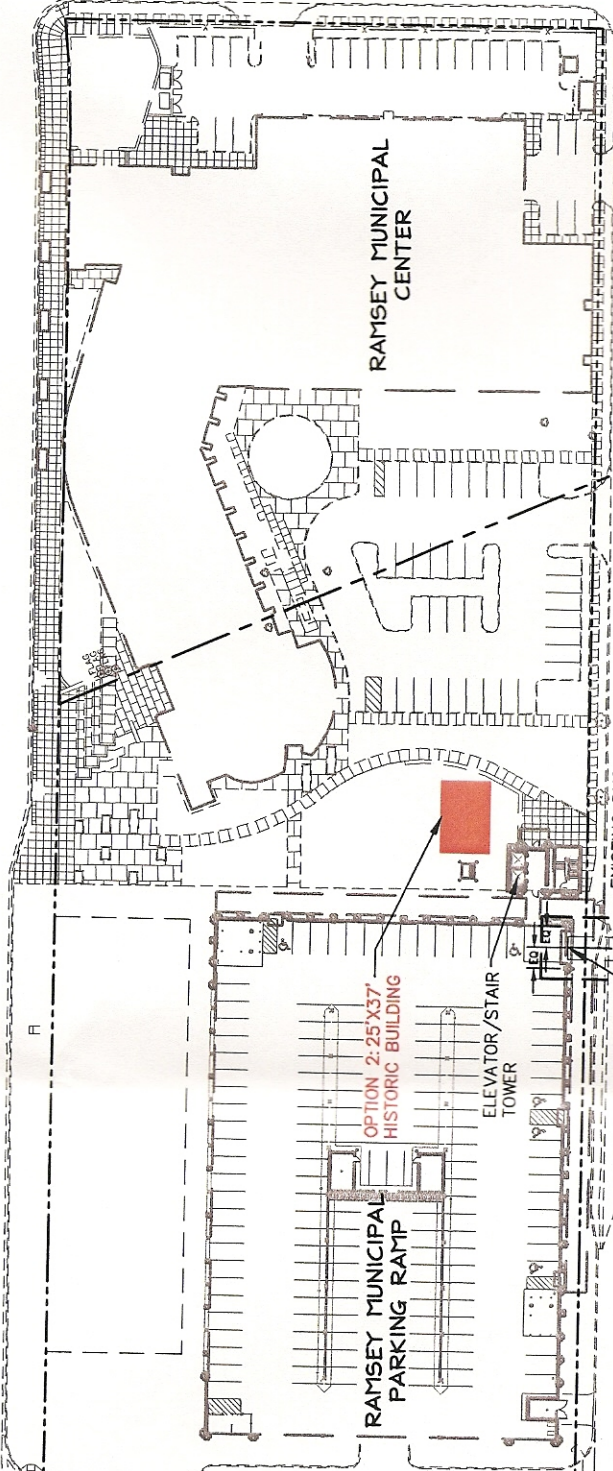
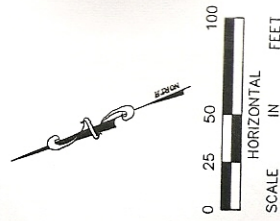


# HISTORIC BUILDING LOCATION OPTIONS

9/13/12

SUNWOOD DRIVE

SAPPHIRE STREET N.W.



NOTES:

1. CONTRACTOR SHALL CONSTRUCT THE PLATFORM EDGE TO BE LOCATED 5'-4" FROM THE CENTERLINE OF THE EXISTING AND REALIGNED TRACK.
  2. CONTRACTOR SHALL VERIFY TRACK ELEVATION PRIOR TO CONSTRUCTION OF PLATFORM.
  3. PLATFORM EDGE SHALL BE 8" ABOVE THE TRACK CENTERLINE ELEVATION.
- CONTROL POINT 9 SHALL BE LOCATED HALFWAY BETWEEN THE TWO EXISTING COLUMNS AT THE FACE OF THE PARKING RAMP. CONTRACTOR SHALL VERIFY THE COORDINATES PROVIDED FOR CONTROL POINT 9, AND ADJUST THE COORDINATES FOR CONTROL POINTS 1 - 8 ACCORDINGLY TO MAINTAIN THE DIMENSIONS AND ANGLES AS SHOWN.

CONTROL POINTS