

# DATA CENTER PROJECT

## NAU COUNTRY INSURANCE

### 7333 SUNWOOD DRIVE NW

### RAMSEY, MN 55303

#### PROJECT DESCRIPTION

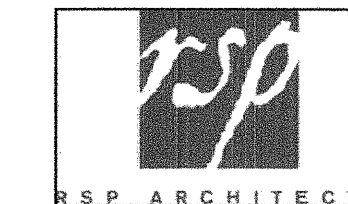
CONSTRUCTION INSIDE OF A SECURE DATA CENTER AREA ON THE SECOND FLOOR OF NAU COUNTRY INSURANCE HEADQUARTERS. ALL CONSTRUCTION SHALL BE DONE ON AN UP AND RUNNING DATA CENTER AND AS INDICATED ON THE PLANS.

PROJECT SCOPE INCLUDES ARCHITECTURAL, MECHANICAL AND ELECTRICAL SYSTEMS.

SIGNIFICANT ARCHITECTURAL ELEMENTS INCLUDE WINDOW TREATMENT INSIDE THE COMPUTER ROOM, CONCRETE PADS, PROTECTIVE BOLLARDS, AND EQUIPMENT COURTYARD FENCING.

CRITICAL MECHANICAL SYSTEMS CONSIST OF TWO (2) AIR COOLED CHILLERS, ONE (1) DRYCOOLER AND TWO (2) GLYCOL PUMPS LOCATED IN THE EQUIPMENT COURTYARD, WITH COOLING DISTRIBUTION UNIT AND REAR DOOR HEAT EXCHANGERS LOCATED IN THE COMPUTER ROOM. MECHANICAL SCOPE OF WORK ALSO INCLUDES DEMOLITION OF EXISTING GLYCOL PUMPS AND DRYCOOLER ON ROOF AND AIR CONDITIONER INSIDE COMPUTER ROOM.

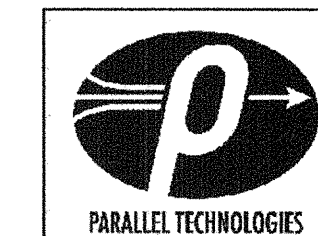
CRITICAL ELECTRICAL SYSTEMS CONSIST OF A DEDICATED NEW TRANSFORMER AND A STANDBY DIESEL ENGINE GENERATOR FEEDING BOTH SIDES OF AN AUTOMATIC TRANSFER SWITCH TO BE LOCATED IN THE EQUIPMENT COURTYARD. THE COMMON OUTPUT OF THE ATS WILL FEED TWO (2) DEDICATED UPS SYSTEMS WHICH IN TURN FEED POWER DISTRIBUTION UNITS AND RACKS LOCATED THE COMPUTER ROOM.



**ARCHITECT:**  
RSP Architects  
1220 Marshall Street NE  
Minneapolis, MN 55413-1036  
612.677.7100



**ELECTRICAL ENGINEER:**  
Leo A Daly  
730 Second Avenue South, Suite 1100  
Minneapolis, MN 55402  
612.338.8741



**MECHANICAL ENGINEER:**  
Parallel Technologies  
7667 Equitable Drive  
Eden Prairie, MN 55344  
952.920.7185

#### BUILDING DATA & APPLICABLE CODES

##### I. BUILDING PURPOSE:

THE PRIMARY FUNCTION OF THIS FACILITY IS TO ACCOMMODATE NAU COUNTRY INSURANCE'S MAJOR COMPUTING SYSTEMS AND ALL ASSOCIATED ANCILLARY AND SUPPORT FUNCTIONS.

##### II. APPLICABLE CODES:

STRUCTURAL: 2007 MINNESOTA STATE BUILDING CODE  
2006 INTERNATIONAL BUILDING CODE  
ACCESSIBILITY: 2007 MINNESOTA ACCESSIBILITY CODE, CHAPTER 1341  
2008 INTERNATIONAL BUILDING CODE  
2003 ANSI A117.1  
MECHANICAL: 2007 MINNESOTA STATE MECHANICAL CODE, CHAPTER 1346  
2006 INTERNATIONAL MECHANICAL CODE  
PLUMBING: 2009 MINNESOTA STATE PLUMBING CODE, CHAPTER 4715  
ELECTRICAL: 2008 NATIONAL ELECTRICAL CODE  
FIRE PROTECTION: 2007 MINNESOTA STATE FIRE CODE  
2006 INTERNATIONAL FIRE CODE  
ENERGY: 2009 MINNESOTA STATE ENERGY CODE

##### III. OCCUPANCY GROUP:

B

##### IV. CONSTRUCTION TYPE:

2B

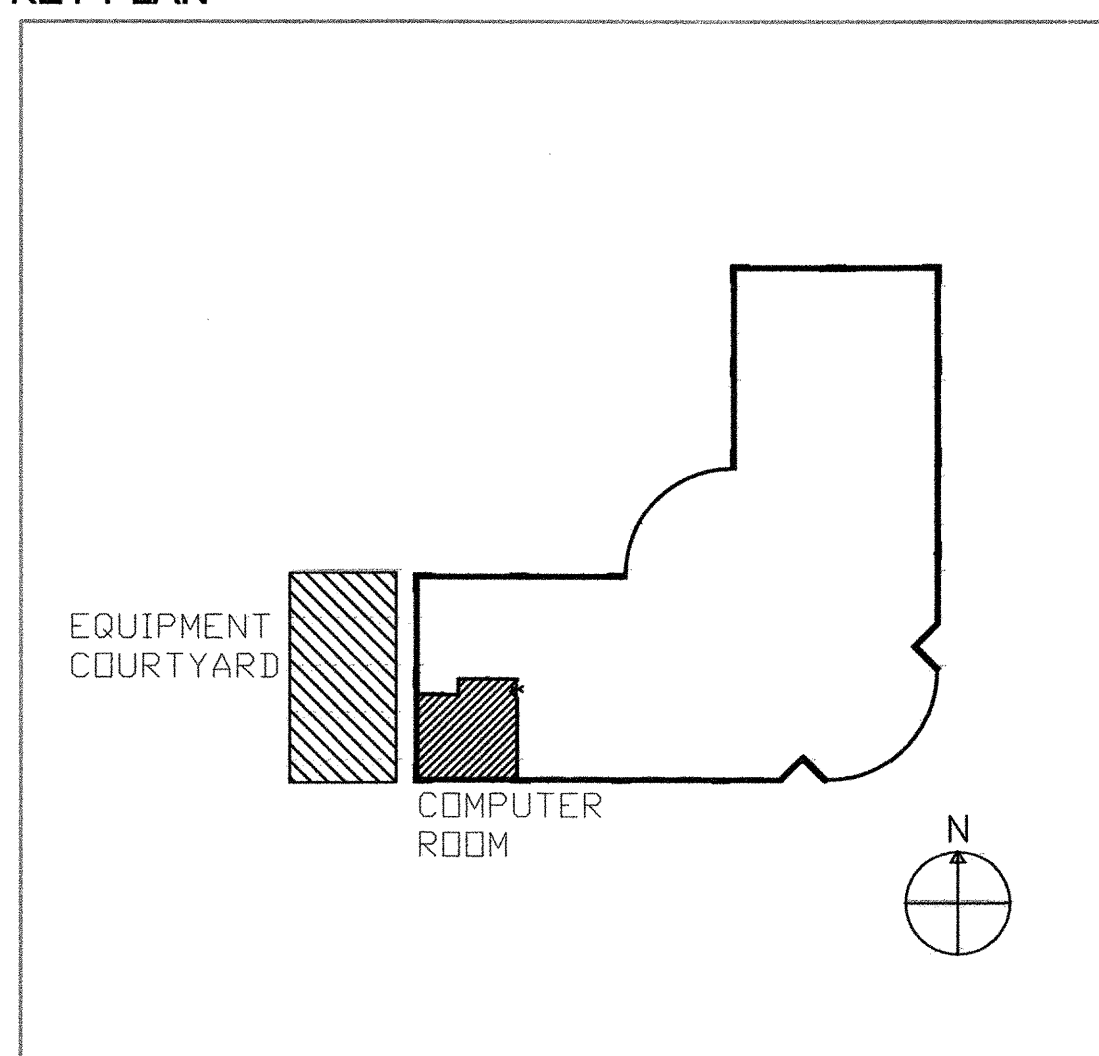
##### V. TOTAL SQUARE FOOTAGE:

32,356 SQUARE FEET

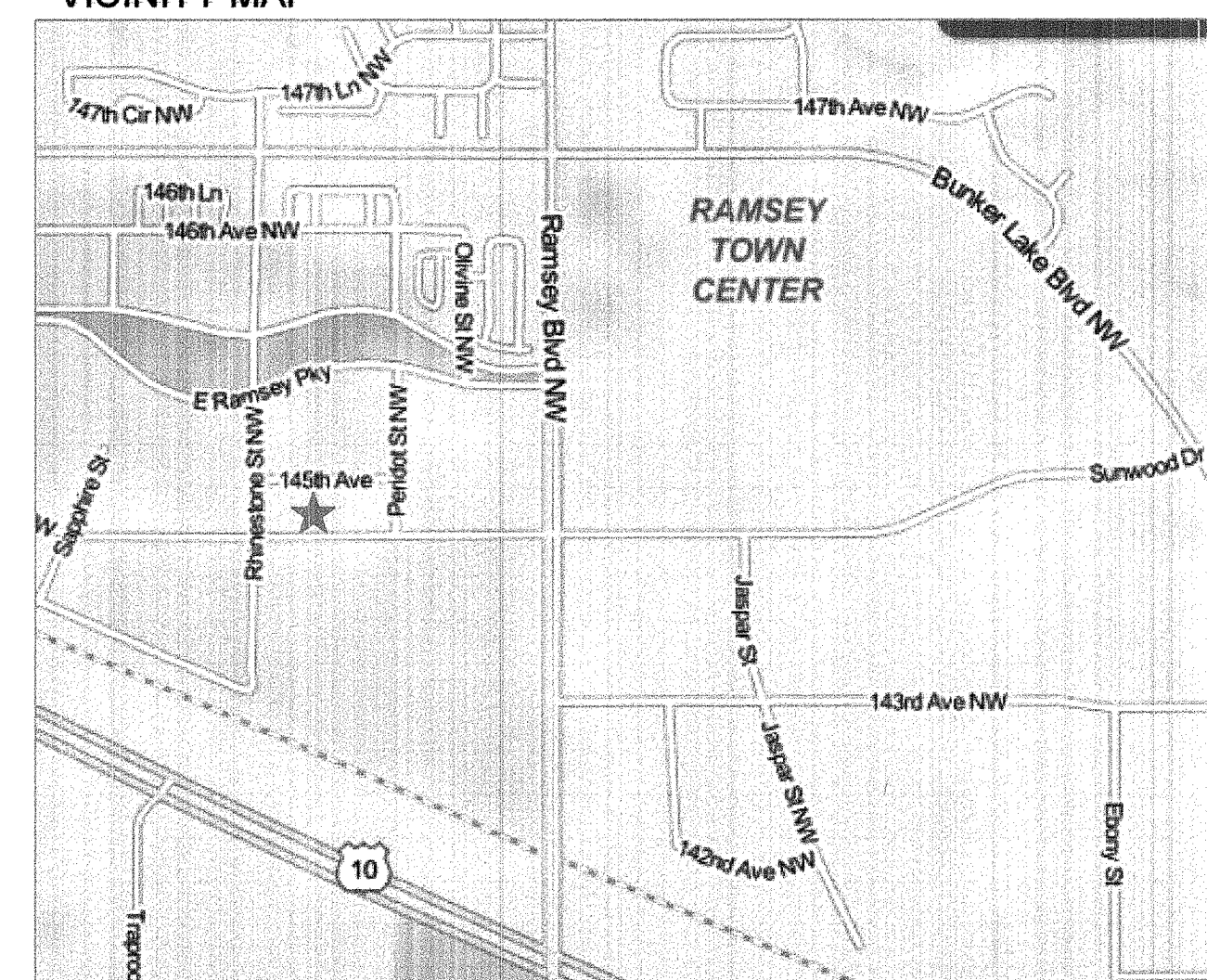
##### VI. IMPACTED AREA SQUARE FOOTAGE:

1,106 SQUARE FEET

#### KEY PLAN



#### VICINITY MAP



#### DRAWING INDEX

- T-1 TITLE SHEET
- A101 SECOND FLOOR PLAN AND SITE PLAN
- A102 SPECIFICATIONS
- SP-1 DATA CENTER SITE PLAN
- M-1 SCHEMATIC: D.C. GLYCOL SYSTEM
- M-2 PLAN: EXTERIOR EQUIPMENT LAYOUT
- M-3 PLAN: INTERIOR EQUIPMENT LAYOUT
- M-4 MECHANICAL EQUIPMENT SCHEDULES
- M-5 MECHANICAL SPECIFICATIONS
- E-1 ELECTRICAL SYMBOLS AND ABBREVIATIONS
- E-2 ELECTRICAL ONE-LINE DIAGRAM
- E-3 GROUNDING DETAILS
- E-4 DATA CENTER EQUIPMENT LAYOUT
- E-5 DATA CENTER SITE PLAN
- E-6 PDU PANEL SCHEDULES
- E-7 PUMP CONTROLLERS
- E-8 EMERGENCY POWER OFF DETAIL

SIGNED  
CONSTRUCTION  
DOCUMENTS

PARALLEL TECHNOLOGIES  
7667 EQUITABLE DRIVE  
EDEN PRAIRIE, MN 55344  
952-920-7185  
www.ptnet.com



REVISION NO.	DATE	REVISION NO.	DATE	REVISION NO.	DATE	REVISION NO.	DATE	REVISION NO.	DATE

ISSUE DATE: 10/19/2012

TITLE SHEET  
DATA CENTER PROJECT  
NAU COUNTRY INSURANCE  
7333 SUNWOOD DRIVE NW  
RAMSEY, MN 55303

PROJECT #: 436  
DRAWN BY: JJ SCALE: N/A  
CHECKED BY: NOC  
DRAWING NUMBER:

T-1