

I hereby certify that this plan, specification, or report was prepared by me or under my direct supervision and that I am a duly Registered Professional Engineer under the laws of the State of Minnesota.

*Greg K. Nelson*  
 Greg K. Nelson  
 45474  
 Registration No.  
 Date 10/26/2012

LEO A DAILY  
 PLANNING ARCHITECTURE ENGINEERING INTERIORS EST. 1915  
 730 Second Avenue South, Suite 1100  
 Minneapolis, MN 55402-2455 USA  
 Tel 612-338-8741 Fax 612-338-4840



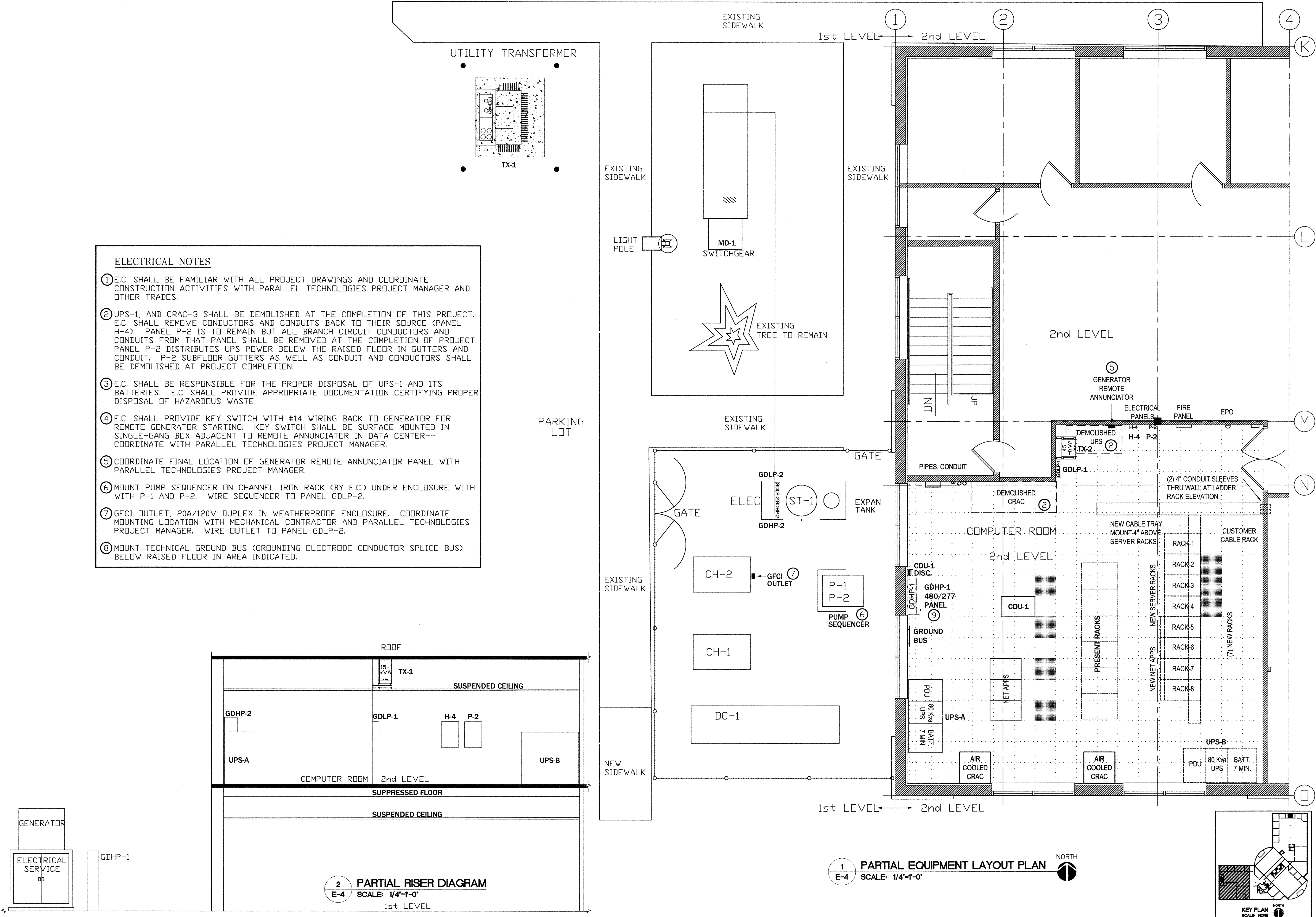
REVISION NO.	DATE	REVISION NO.	DATE	REVISION NO.	DATE	REVISION NO.	DATE

ISSUE DATE: 10/19/2012

**ELECTRICAL EQUIPMENT LAYOUT**  
 DATA CENTER PROJECT  
 NAU COUNTRY INSURANCE  
 7333 SUNWOOD DRIVE NW  
 RAMSEY, MN 55303

PROJECT #: 436  
 DRAWN BY: GAN SCALE: 1/4" = 1'-0"  
 CHECKED BY: RAJ  
 DRAWING NUMBER: **E-4**

- ELECTRICAL NOTES**
- E.C. SHALL BE FAMILIAR WITH ALL PROJECT DRAWINGS AND COORDINATE CONSTRUCTION ACTIVITIES WITH PARALLEL TECHNOLOGIES PROJECT MANAGER AND OTHER TRADES.
  - UPS-1, AND CRAC-3 SHALL BE DEMOLISHED AT THE COMPLETION OF THIS PROJECT. E.C. SHALL REMOVE CONDUCTORS AND CONDUITS BACK TO THEIR SOURCE (PANEL H-4). PANEL P-2 IS TO REMAIN BUT ALL BRANCH CIRCUIT CONDUCTORS AND CONDUITS FROM THAT PANEL SHALL BE REMOVED AT THE COMPLETION OF PROJECT. PANEL P-2 DISTRIBUTES UPS POWER BELOW THE RAISED FLOOR IN GUTTERS AND CONDUIT. P-2 SUBFLOOR GUTTERS AS WELL AS CONDUIT AND CONDUCTORS SHALL BE DEMOLISHED AT PROJECT COMPLETION.
  - E.C. SHALL BE RESPONSIBLE FOR THE PROPER DISPOSAL OF UPS-1 AND ITS BATTERIES. E.C. SHALL PROVIDE APPROPRIATE DOCUMENTATION CERTIFYING PROPER DISPOSAL OF HAZARDOUS WASTE.
  - E.C. SHALL PROVIDE KEY SWITCH WITH #14 WIRING BACK TO GENERATOR FOR REMOTE GENERATOR STARTING. KEY SWITCH SHALL BE SURFACE MOUNTED IN SINGLE-GANG BOX ADJACENT TO REMOTE ANNUNCIATOR IN DATA CENTER--COORDINATE WITH PARALLEL TECHNOLOGIES PROJECT MANAGER.
  - COORDINATE FINAL LOCATION OF GENERATOR REMOTE ANNUNCIATOR PANEL WITH PARALLEL TECHNOLOGIES PROJECT MANAGER.
  - MOUNT PUMP SEQUENCER ON CHANNEL IRON RACK (BY E.C.) UNDER ENCLOSURE WITH WITH P-1 AND P-2. WIRE SEQUENCER TO PANEL GDLP-2.
  - GFCI OUTLET, 20A/120V DUPLEX IN WEATHERPROOF ENCLOSURE. COORDINATE MOUNTING LOCATION WITH MECHANICAL CONTRACTOR AND PARALLEL TECHNOLOGIES PROJECT MANAGER. WIRE OUTLET TO PANEL GDLP-2.
  - MOUNT TECHNICAL GROUND BUS (GROUNDING ELECTRODE CONDUCTOR SPLICE BUS) BELOW RAISED FLOOR IN AREA INDICATED.



2 PARTIAL RISER DIAGRAM  
 E-4 SCALE: 1/4"=1'-0"  
 1st LEVEL

1 PARTIAL EQUIPMENT LAYOUT PLAN  
 E-4 SCALE: 1/4"=1'-0"

