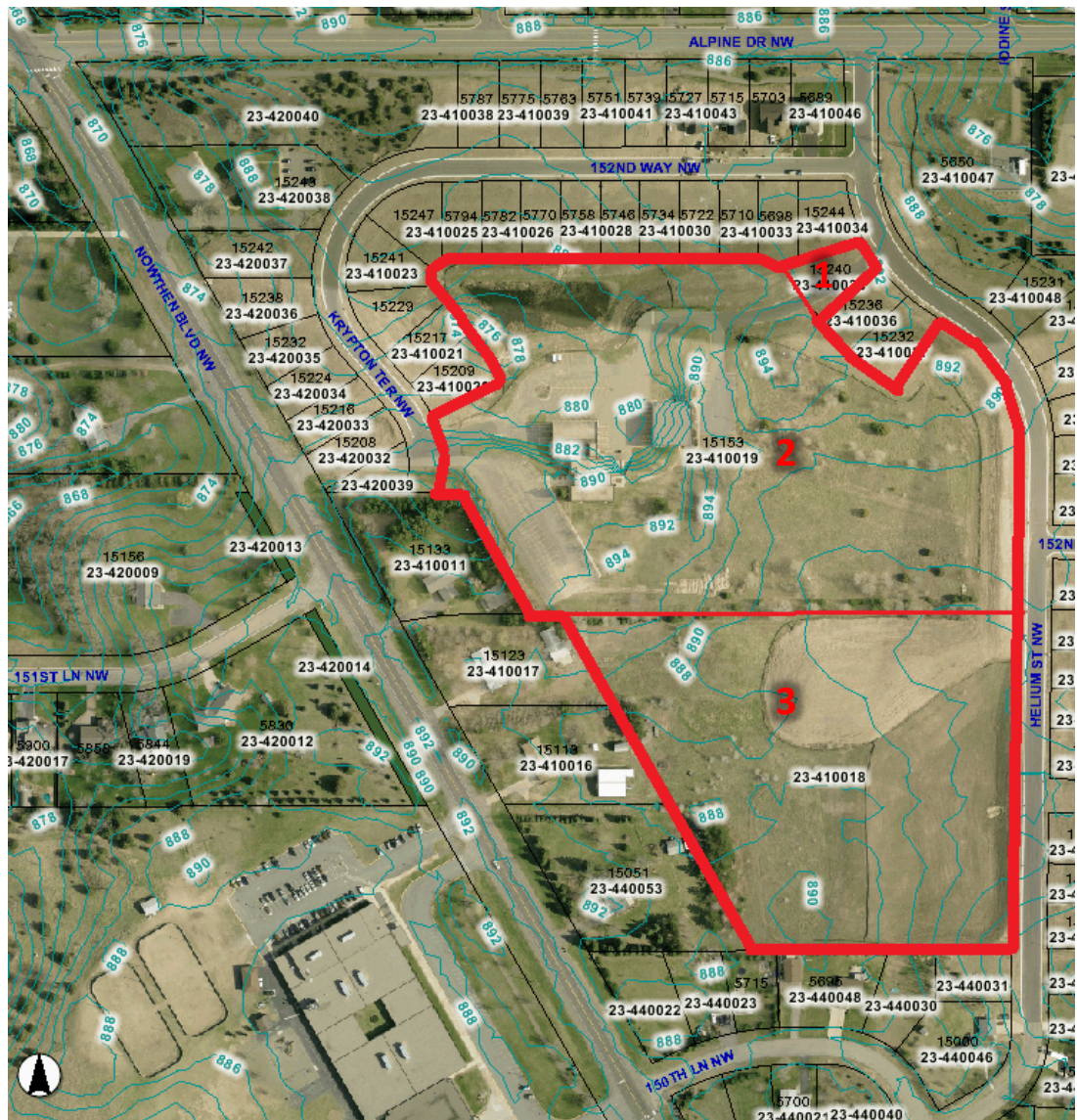


## PROPERTY PROFILE: CITY OF RAMSEY

**NUMBER:** 06  
**ADDRESS:** 15240 HELIUM ST NW, 15153 NOWTHEN BLVD NW, NA  
**PID:** 233225410035, 233225410019, 233225410018 (Three separate parcels—listed from the top down).  
**LEGAL:** Lots 4, 5, 21, Block 1, Meadow, Anoka County, Minnesota  
**ACRES:** 20.86  
**VALUATION:** \$1,501,769  
**ZONING:** Public/Quasi Public and PUD (Planned Unit Development)  
**MUSA:** Yes  
**GIS IMAGE:**



**DESCRIPTION:** The subject property is located on the east side of Nowthen Boulevard and on the South side of Alpine Drive. It is made up of three separate parcels; which make up the old municipal center complex. The property is surrounded by residential and is zoned Public/Quasi Public District.

**WETLAND:** No reason to use property for wetland banking. There are no issues with wetlands that would make this property unusable; or, effect adjacent properties.

**MAINTENANCE:** Mowed 12 times per year—\$125 per mow (\$1,500 per year). There are multiple buildings located on these parcels as well—which are maintained by the city (additional cost).

**OWNER & ENCUMBRANCE:** These three parcels comprise the old City Hall complex and are available for sale.

**DISPOSITION:** The old municipal center is available for a number of business and/or commercial uses. Otherwise, redevelopment of the property into single family residential or senior housing fits in well with the surrounding areas. This property is currently being marketed by the Ramsey EDA.

**BUILDING SPECIFICATIONS:** Next Page

## BUILDING SPECIFICATIONS:

Bldg.	Floor	Room	Description	Walls	Length	Width	Sq. ft.
B	Down	1	Garage	Brick	30	74	2220
B	Down	2	Storage Room	Brick	17	22	374
B	Down	3	Storage Room (connected to 2)	Brick	10	25	250
B	Down	4	Large storage garage, various cut out rooms	Brick	53	33	1749
B	Up	1	Office Room	Finished	12	17	204
B	Up	2	Office Room	Finished	12	9.5	114
B	Up	3	Office Room	Finished	12	12	144
B	Up	4	Small Utility Room	Finished	8	10	80
B	Up	5	Lobby	Finished	10	10	100
B	Up	6	Office Room	Finished	15	40	600
B	Up	7	Utility	Brick	12	8	96
B	Up	8	Office Room	Finished	12	10	120
B	Up	9	Office Room	Finished	12	20	240
B	Up	10	Office Room	Finished	12	9.5	114
B	Up	11	Office Room (plus two small attached rooms)	Finished	12	22	264
B	Up	12	Office Room	Finished	12	22	264
B	Up	13	Office Room	Finished	14	26	364
A	Down	1	Garage	Brick	74	37	2738
A	Down	2	Cafeteria, staging room	Brick	20	40	800
A	Down	3	Office Room	Finished	10	10	100
A	Down	4	Storage room (connected to 1)	Brick	12	20	240
A	Down	5	Office Room	Finished	24	40	960
A	Down	6	Office Room	Finished	33	24	792
A	Down	7	Cafeteria (connected to 6)	Finished	12	24	288
A	Up	1	Lobby	Finished	10	20	200
A	Up	2	Reception Desk Area	Finished	12	24	288
A	Up	3	Office Room	Finished	22	67	1474
A	Up	4	Office Room (connected to 1)	Finished	20	14	280
A	Up	5	Office Room	Finished	50	12.5	625
A	Up	6	Office Room	Finished	12	9.5	114
A	Up	7	Office Room	Finished	28	12	336
A	Up	8	Office Room	Finished	12	9.5	114
A	Up	9	Office Room	Finished	12	9	108
A	Up	10	Office Room	Finished	12	9.5	114
A	Up	11	Office Room	Finished	15	9.5	142.5

### Breakdown of Square Footage

<u>Building A (Old Admin/Fire)</u>	<u>9913.5</u>
Downstairs	6118
Upstairs	3795.5
<u>Building B (Old Police Station)</u>	<u>7297</u>
Downstairs	4593
Upstairs	2704
Total Finished/Office Space	8543.5
Total Garage/Storage	8667
<u>Grand Total (usable space)</u>	<u>17211</u>

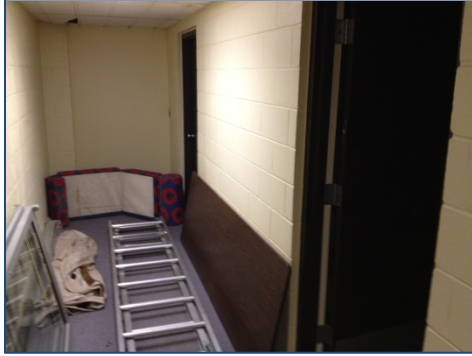
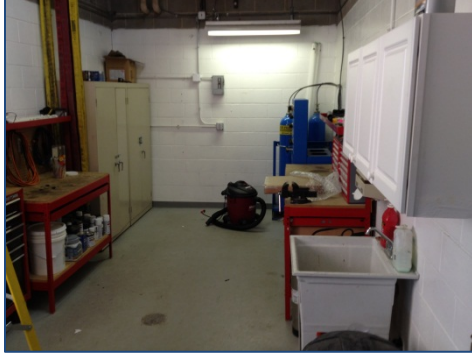
NOTE: there are a large number of small utility rooms, storage rooms, hall ways bathrooms, stair cases, etc--taking up a significant amount of square feet estimated between 5,000-10,000

**BUILDING IMAGES (OUTSIDE):**

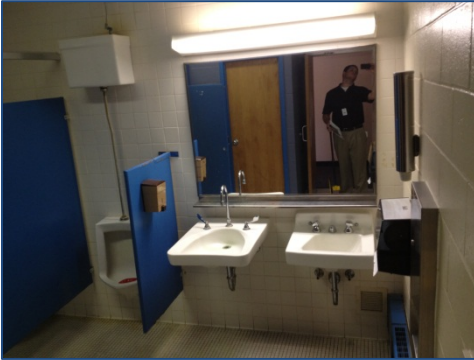


**BUILDING IMAGES (INSIDE):**

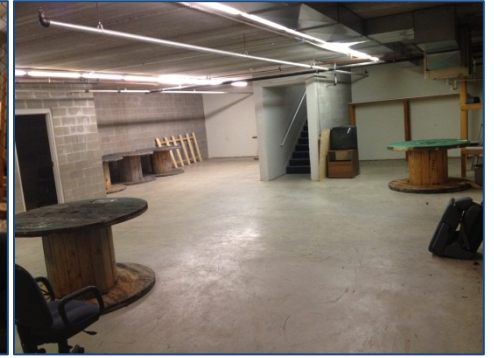
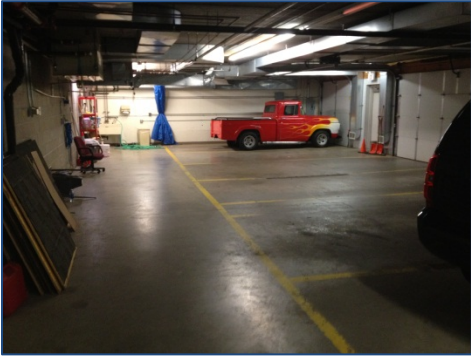
**Building A, Downstairs**



Building A, Upstairs



**Building B, Downstairs**



Building B, Downstairs

