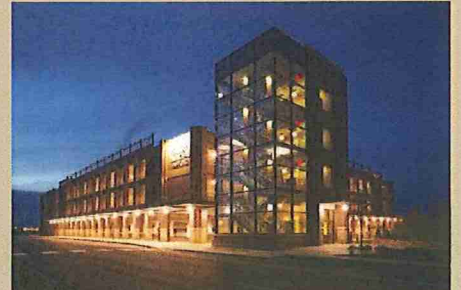


CITY OF RAMSEY
HOUSING REDEVELOPMENT AUTHORITY
REQUESTED BUDGET
For Fiscal Year 2013



City of Ramsey
2013 Requested Housing Redevelopment Authority Fund Budget

HOUSING REDEVELOPMENT AUTHORITY FUND 295 - SUMMARY

REVENUES					
	-Actual 2009-	-Actual 2010-	-Actual 2011-	-Adopted 2012-	-Requested 2013-
TAXES	547,631	383,005	346,428	368,532	328,567
INTERGOVERNMENTAL REVENUES	13,722				
INVESTMENT EARNINGS	24,699	5,000	2,500	2,500	2,500
MISCELLANEOUS	6,446,837	5	34,395	-	-
OTHER FINANCING SOURCES	1,583,185	5,000	136,302	-	-
TOTAL REVENUES	8,616,074	393,010	519,625	371,032	331,067

EXPENDITURES					
	-Actual 2009-	-Actual 2010-	-Actual 2011-	-Adopted 2012-	-Requested 2013-
PERSONAL SERVICES	97,849	43,084	150,015	130,251	130,268
SUPPLIES		76,482	59,826	30,000	30,000
OTHER SERVICES & CHARGES	441,023	423,163	433,741	347,160	170,799
CAPITAL OUTLAY			111,669	-	-
TRANSFERS OUT					
TOTAL EXPENDITURES	538,873	542,729	755,251	507,411	331,067

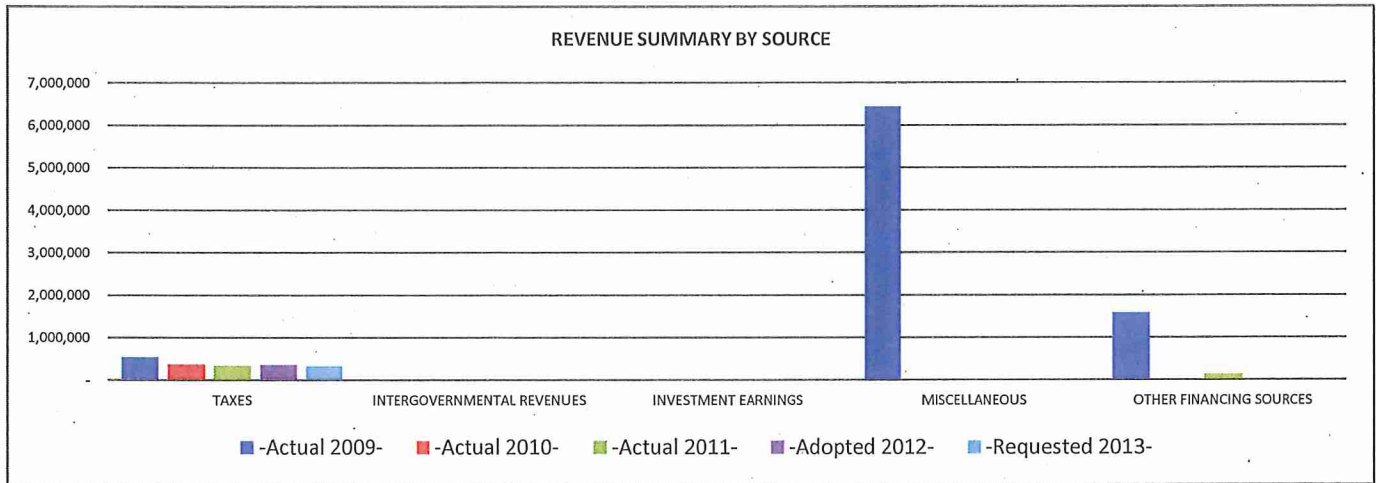
FUND BALANCE					
	-Actual 2009-	-Actual 2010-	-Actual 2011-	-Adopted 2012-	-Requested 2013-
FUND BALANCE, Beginning on Yr	621,442	751,807	602,088	366,462	230,083
Revenues & Other Sources	7,433,666	393,010	519,625	371,032	331,067
Expenditures & Other Uses	(7,303,301)	(542,729)	(755,251)	(507,411)	(331,067)
FUND BALANCE, End of Yr	751,807	602,088	366,462	230,083	230,083

City of Ramsey
2013 Requested Housing Redevelopment Authority Fund Budget

HOUSING REDEVELOPMENT AUTHORITY FUND 295 - REVENUE DETAIL

2009 Actual 2010 Actual 2011 Actual 2012 Adopted 2013 Requested

HRA FUND 9295 - REVENUE SUMMARY	-Actual 2009-	-Actual 2010-	-Actual 2011-	-Adopted 2012-	-Requested 2013-
TAXES	547,631	383,005	346,428	368,532	328,567
INTERGOVERNMENTAL REVENUES	13,722				
INVESTMENT EARNINGS	24,699	5,000	2,500	2,500	2,500
MISCELLANEOUS	6,446,837	5	34,395	-	
OTHER FINANCING SOURCES	1,583,185	5,000	136,302	-	
TOTAL REVENUES	8,616,074	393,010	519,625	371,032	331,067



HRA FUND 9295 - REVENUE BY SOURCE		-Actual 2009-	-Actual 2010-	-Actual 2011-	-Adopted 2012-	-Requested 2013-
TAXES						
4011	CURRENT-AD VALOREM TAXES	488,127	383,005	270,931	368,532	328,567
4012	DELINQUENT-AD VALOREM TAXES	16,263		5,517	-	
4014	FISCAL DISPARITIES	43,241		69,980	-	
TAXES Total		547,631	383,005	346,428	368,532	328,567
INTERGOVERNMENTAL REVENUES						
- STATE INTERGOVERNMENTAL						
4263	MARKET VALUE HOMESTEAD CREDIT	13,722				
INTERGOVERNMENTAL REVENUES Total		13,722				
INVESTMENT EARNINGS						
4701	INTEREST ON INVESTMENTS	24,699	5,000	2,500	2,500	2,500
INVESTMENT EARNINGS Total		24,699	5,000	2,500	2,500	2,500
MISCELLANEOUS						
4609	OTHER MISCELLANEOUS REVENUES	595,641	5	34,395	-	
4723	SPECIAL REVENUE-UNUSUAL EVENT	5,851,196				
MISCELLANEOUS Total		6,446,837	5	34,395	-	
OTHER FINANCING SOURCES						
TRANSFERS IN						
4901	TRANSFER IN FROM OTHER FUNDS	1,583,185	5,000	136,302	-	
OTHER FINANCING SOURCES Total		1,583,185	5,000	136,302	-	
TOTAL REVENUE		8,616,074	393,010	519,625	371,032	331,067

City of Ramsey
2013 Requested Housing Redevelopment Authority Fund Budget

2009 Actual	2010 Actual	2011 Actual	2012 Adopted	2013 Requested
-------------	-------------	-------------	--------------	----------------

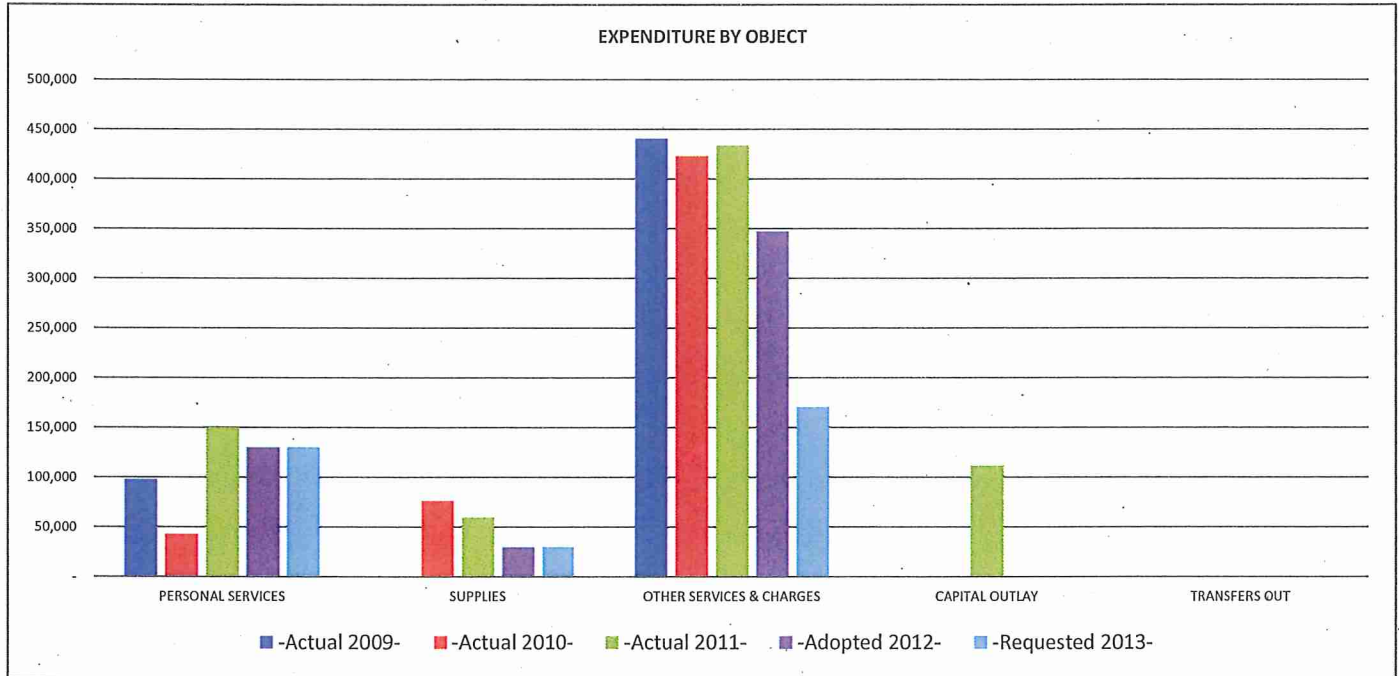
HOUSING REDEVELOPMENT AUTHORITY FUND 295 - REVENUE DETAIL

	2009 Actual	2010 Actual	2011 Actual	2012 Adopted	2013 Requested
4011 Current Ad Valorem Taxes					
((includes taxes from Town Center)	561,353	383,005	346,428	368,532	328,567
	561,353	383,005	346,428	368,532	328,567
4701 Interest Earnings					
	24,699	5,000	2,500	2,500	2,500
	24,699	5,000	2,500	2,500	2,500
4609 Miscellaneous Revenues					
Earnest Money - TOTI			34,395	-	-
County HRA payment towards RTC land purchase	595,641	5	-	-	-
	595,641	5	34,395	-	-
4901 Transfers in from other funds					
Letter of Credit Proceeds & Sewer/Water Loan	1,583,185	5,000	-	-	-
Non TIF Interest Earnings	0	0	136,302	-	-
	1,583,185	5,000	136,302	-	-

City of Ramsey
2013 Requested Housing Redevelopment Authority Fund Budget

HOUSING REDEVELOPMENT AUTHORITY FUND 295 - EXPENDITURE DETAIL

	2009 Actual	2010 Actual	2011 Actual	2012 Adopted	2013 Requested
EXPENDITURE BY OBJECT SUMMARY					
PERSONAL SERVICES	97,849	43,084	150,015	130,251	130,268
SUPPLIES		76,482	59,826	30,000	30,000
OTHER SERVICES & CHARGES	441,023	423,163	433,741	347,160	170,799
CAPITAL OUTLAY			111,669		
TRANSFERS OUT					
TOTAL EXPENDITURE BY OBJECT	538,873	542,729	755,251	507,411	331,067



EXPENDITURE BY OBJECT RECAP		-Actual 2009-	-Actual 2010-	-Actual 2011-	-Adopted 2012-	-Requested 2013-
PERSONAL SERVICES						
WAGES AND SALARIES						
6102	F.T. REGULAR-WAGES & SALARIES	84,591	37,221	123,895	100,129	107,410
6104	PART TIME-WAGES & SALARIES			6,175	8,400	6,000
6105	TEMPORARY-WAGES & SALARIES			-	6,000	-
WAGES AND SALARIES		84,591	37,221	130,070	114,529	113,410
EMPLOYER CONTRIBUTIONS						
6121	PERA CONTRIBUTIONS	5,710	2,605	8,983	7,259	7,787
6122	FICA/MEDICARE CONTRIBUTIONS	6,472	2,847	9,973	7,660	8,217
6133	WORKERS COMP INSURANCE PREMIUM	1,076	411	989	803	854
EMPLOYER CONTRIBUTIONS		13,258	5,863	19,945	15,722	16,858
PERSONAL SERVICES Total		97,849	43,084	150,015	130,251	130,268
SUPPLIES						
OPERATING SUPPLIES						
6246	MARKETING & PROMOTIONS		76,264	59,350	30,000	30,000
6249	MISCELLANEOUS OPERATING SUPPLY		218	476	-	-
OPERATING SUPPLIES			76,482	59,826	30,000	30,000
SUPPLIES Total			76,482	59,826	30,000	30,000

City of Ramsey
2013 Requested Housing Redevelopment Authority Fund Budget

HOUSING REDEVELOPMENT AUTHORITY FUND 295 - EXPENDITURE DETAIL

	2009 Actual	2010 Actual	2011 Actual	2012 Adopted	2013 Requested
OTHER SERVICES & CHARGES					
PROFESSIONAL SERVICES					
6304 LEGAL FEES	1,198	29,847	77,390	25,000	35,000
6315 MISCELLANEOUS PROFESSIONAL SER	437,184	323,886	284,525	240,000	51,499
PROFESSIONAL SERVICES	438,382	353,733	361,915	265,000	86,499
COMMUNICATION					
6322 POSTAGE		27	938	1,000	1,000
COMMUNICATION		27	938	1,000	1,000
EMPLOYEE REIMBURSEMENTS					
6331 TRAVEL & LODGING	-	11,366	19,858	20,000	20,000
6334 MILEAGE REIMBURSEMENT			36	500	400
6335 TRAINING	989	3,655	242	2,500	2,000
EMPLOYEE REIMBURSEMENTS	989	15,021	20,136	23,000	22,400
INSURANCE					
6361 GENERAL LIABILITY/PROPERTY INS	1,652	4,562	3,004	-	6,000
INSURANCE	1,652	4,562	3,004	-	6,000
UTILITIES					
6371 ELECTRIC UTILITIES			50	6,500	3,000
UTILITIES			50	6,500	3,000
DUES, SUBSCRIPTIONS, AND REGISTRATION FEES					
6451 MEMBERSHIP DUES	-	2,160	-	3,500	3,500
6452 SUBSCRIPTIONS	-	-	98	500	400
DUES, SUBSCRIPTIONS, AND REGISTRATION FEES	-	2,160	98	4,000	3,900
CONTRACTED SERVICES					
6489 OTHER CONTRACTED SERVICES		47,660	47,600	47,660	48,000
CONTRACTED SERVICES		47,660	47,600	47,660	48,000
OTHER SERVICES & CHARGES Total	441,023	423,163	433,741	347,160	170,799

TOTAL EXPENDITURES & OTHER FINANCING	538,873	542,729	643,582	507,411	331,067
---	----------------	----------------	----------------	----------------	----------------

	2009 Actual	2010 Actual	2011 Actual	2012 Adopted	2013 Requested
6102 Wages & Salaries					
Personnel	84,591	37,221	123,895	100,129	107,410
	84,591	37,221	123,895	100,129	107,410
6105 Wages & Salaries-Part Time					
Stipend for HRA Meeting \$25/mtg	-	-	6,175	8,400	6,000
	-	-	6,175	8,400	6,000
6105 Temporary Wages & Salaries					
Temporary Labor-Maintenance	-	-	-	6,000	-
	-	-	-	6,000	-
6246 Marketing & Promotional Supplies					
COR Website Domains	-	2,234	1,750	3,000	3,000
COR Marketing	-	74,030	57,600	27,000	27,000
	-	76,264	59,350	30,000	30,000
6249 Miscellaneous Operating Supplies					
Miscellaneous	-	218	476	-	-
	-	218	476	-	-
6304 Legal Fees					
Legal Fees	1,198	29,847	77,390	25,000	35,000
	1,198	29,847	77,390	25,000	35,000

City of Ramsey
2013 Requested Housing Redevelopment Authority Fund Budget

HOUSING REDEVELOPMENT AUTHORITY FUND 295 - EXPENDITURE DETAIL

	2009 Actual	2010 Actual	2011 Actual	2012 Adopted	2013 Requested
6315 Miscellaneous Professional Services					
Development Management Contract & Exp	-	311,750	267,944	210,000	30,000
Property Taxes	323,185	-	-	-	-
Misc Consulting Services	113,999	12,136	15,996	30,000	21,499
	437,184	323,886	283,940	240,000	51,499
6322 Postage					
Mailing Housing Surveys	-	27	938	1,000	1,000
	-	27	938	1,000	1,000
6331 Travel/Meals/Lodging					
Travel for COR	-	11,366	19,858	20,000	20,000
	-	11,366	19,858	20,000	20,000
6334 Mileage Reimbursement					
Reimbursement for personal use of auto	-	-	36	500	400
	-	-	36	500	400
6335 Training					
Misc HRA Conferences	989	3,655	242	2,500	2,000
	989	3,655	242	2,500	2,000
6361 General Liability/Property/Auto Insurance					
Share of applicable insurance coverage.	1,652	4,562	5,865	-	6,000
	1,652	4,562	5,865	-	6,000
6371 Electric Utilities					
Electric for COR Sign	-	-	109	6,500	3,000
	-	-	109	6,500	3,000
6451 Dues					
ICSC	-	2,160	-	3,500	3,500
	-	2,160	-	3,500	3,500
6452 Subscriptions					
MN Real Estate Journal & Business Journal	-	-	98	500	400
	-	-	98	500	400
6489 Other Contracted Services					
Park Ramp Maintenance Agreement	-	47,660	47,600	47,660	48,000
	-	47,660	47,600	47,660	48,000