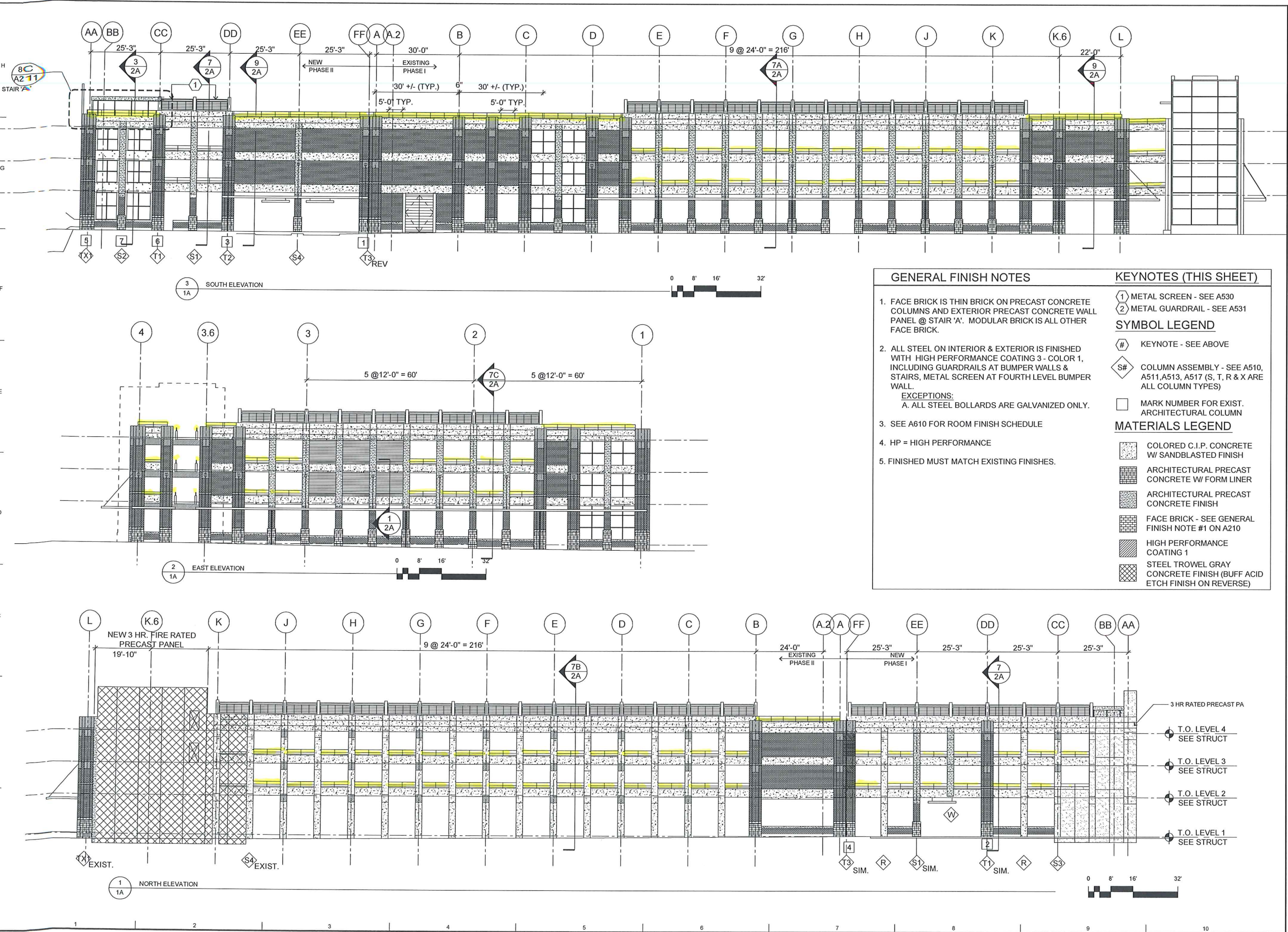


File Location

Copyright 2001



GENERAL FINISH NOTES

- FACE BRICK IS THIN BRICK ON PRECAST CONCRETE COLUMNS AND EXTERIOR PRECAST CONCRETE WALL PANEL @ STAIR 'A'. MODULAR BRICK IS ALL OTHER FACE BRICK.
- ALL STEEL ON INTERIOR & EXTERIOR IS FINISHED WITH HIGH PERFORMANCE COATING 3 - COLOR 1, INCLUDING GUARDRAILS AT BUMPER WALLS & STAIRS, METAL SCREEN AT FOURTH LEVEL BUMPER WALL.
EXCEPTIONS:
A. ALL STEEL BOLLARDS ARE GALVANIZED ONLY.
- SEE A610 FOR ROOM FINISH SCHEDULE
- HP = HIGH PERFORMANCE
- FINISHED MUST MATCH EXISTING FINISHES.

KEYNOTES (THIS SHEET)

- 1 METAL SCREEN - SEE A530
- 2 METAL GUARDRAIL - SEE A531

SYMBOL LEGEND

- # KEYNOTE - SEE ABOVE
- S# COLUMN ASSEMBLY - SEE A510, A511, A513, A517 (S, T, R & X ARE ALL COLUMN TYPES)
- MARK NUMBER FOR EXIST. ARCHITECTURAL COLUMN

MATERIALS LEGEND

- COLORED C.I.P. CONCRETE W/ SANDBLASTED FINISH
- ARCHITECTURAL PRECAST CONCRETE W/ FORM LINER
- ARCHITECTURAL PRECAST CONCRETE FINISH
- FACE BRICK - SEE GENERAL FINISH NOTE #1 ON A210
- HIGH PERFORMANCE COATING 1
- STEEL TROWEL GRAY CONCRETE FINISH (BUFF ACID ETCH FINISH ON REVERSE)

**Ramsey Municipal
Parking Facility
Guardrail Enhancements
Ramsey, MN 55303**

Issue / Revisions	Date
No.	

I hereby certify that this plan, specification, or supervision and that I am a duly Licensed Architect under the laws of the state of Minnesota
Print Name: Susan R. Lee
Signature: _____ License #: 47351
Date: 05.12.11

Drawn By: BCS
Checked By: BCS
Date: 05.12.11

Consultant: _____

219 N. Second Street
Suite 302
Minneapolis, MN 55401
Tel: 612.339.8729
Fax: 612.339.7433
www.isadesigninc.com

Project Number: 10-12
Sheet Number: PR2-1A

**ENHANCED GUARDRAIL
OPTION 'A'**

DRAFT

