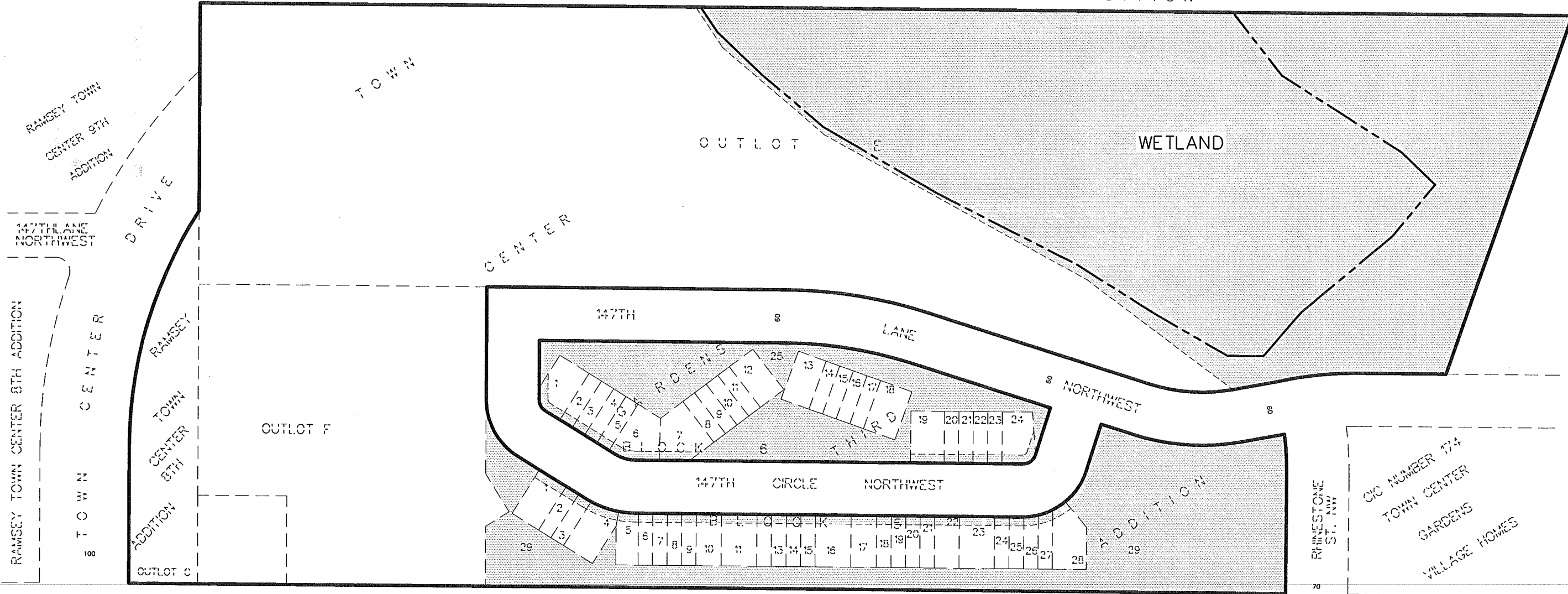


PINEVIEW ESTATES SECOND ADDITION



120
150

BUNKER LAKE BOULEVARD N.W. (C.S.A.H. 116)

150

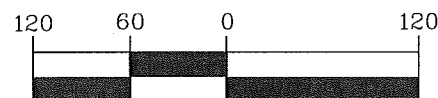
TOWN CENTER DRIVE
RAMSEY TOWN CENTER ADDITION

RAMSEY TOWN CENTER 7TH ADDITION

RHINESTONE ST. NW

DENOTES PROPOSED DRAINAGE AND UTILITY EASEMENTS TO BE VACATED

PROPOSED DRAINAGE AND UTILITY EASEMENTS TO BE VACATED



SCALE IN FEET

All drainage and utility easements lying over, under and across Lots 1 through 29 inclusive, Block 5 and Lots 1 through 7 inclusive, and Lots 19 through 25 inclusive, Block 6, and Outlot E, TOWN CENTER GARDENS THIRD ADDITION, according to the recorded plat thereof, Anoka County, Minnesota, as delineated and dedicated on said TOWN CENTER GARDENS THIRD ADDITION.

* THIS SKETCH DOES NOT PURPORT TO SHOW THE EXISTENCE OR NONEXISTENCE OF ANY ENCROACHMENTS FROM OR ONTO THE HEREON DESCRIBED LAND, EASEMENTS OF RECORD OR UNRECORDED EASEMENTS WHICH AFFECT SAID LAND OR ANY IMPROVEMENTS TO SAID LAND.

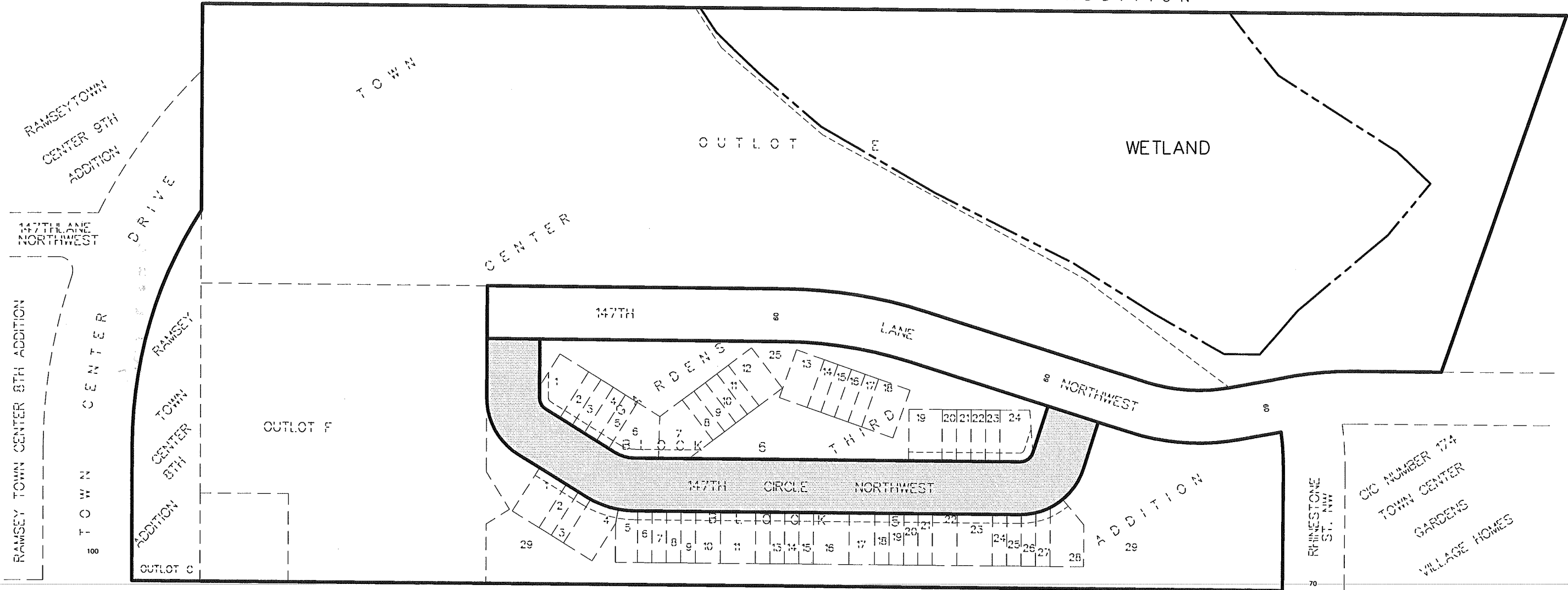


RECEIVED
JAN 04 2013
Description Sketch for:
THE SEASONS OF RAMSEY LIMITED PARTNERSHIP

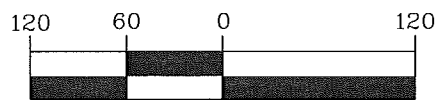
Cad File: 112304-VACATED CIRCLE NW
Date: 1-3-13
Folder #: 7490
Drawn by: NJK

PIONEERengineering
CIVIL ENGINEERS LAND PLANNERS LAND SURVEYORS LANDSCAPE ARCHITECTS
(651) 681-1914
Fax: 681-9488
www.pioneereng.com
2422 Enterprise Drive
Mendota Heights, MN 55120

PINEVIEW ESTATES SECOND ADDITION



DENOTES PROPOSED 147TH CIRCLE N.W. TO BE VACATED



SCALE IN FEET

RIGHT OF WAY TO BE VACATED

All of 147th Circle N.W., as delineated and dedicated on the TOWN CENTER GARDENS THIRD ADDITION according to the recorded plat thereof, Anoka County, Minnesota.

* THIS SKETCH DOES NOT PURPORT TO SHOW THE EXISTENCE OR NONEXISTENCE OF ANY ENCROACHMENTS FROM OR ONTO THE HEREON DESCRIBED LAND, EASEMENTS OF RECORD OR UNRECORDED EASEMENTS WHICH AFFECT SAID LAND OR ANY IMPROVEMENTS TO SAID LAND.

RECEIVED

JAN 04 2013

Description Sketch for:

THE SEASONS OF RAMSEY LIMITED PARTNERSHIP

Cad File: 112304-VACATED CIRCLE NW

Date: 1-3-13

Folder #: 7490

Drawn by: NJK

PIONEERengineering
 CIVIL ENGINEERS LAND PLANNERS LAND SURVEYORS LANDSCAPE ARCHITECTS

(651) 681-1914
 Fax: 681-9488
 www.pioneereng.com

2422 Enterprise Drive
 Mendota Heights, MN 55120

Sheet
 1 of 1