

**CANOPY CALCULATIONS:**

Required Canopy Cover Square Footage:

	Acre	Square Feet	
Total Lot Size	23.62	1,028,887	100% of Total Lot Size
Impervious Surface Area	12	522,720	51% of Total Lot Size
Pervious Surface Area	11.62	506,167	49% of Total Lot Size

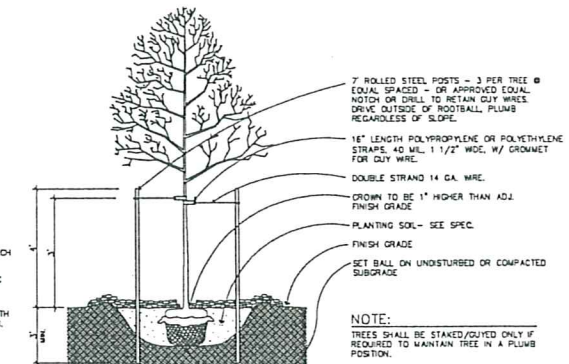
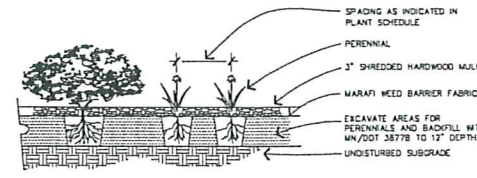
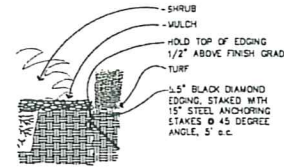
Required Canopy Cover = (Impervious Surface Area / Total Lot Size) x Pervious Surface Area

(522,720 sq. ft. / 1,028,887 sq. ft.) x 506,167 sq. ft. = 257,155 sq. ft. of required canopy cover

257,155 sq. ft. of required canopy cover  
 64,289 maximum sq. ft. of canopy cover for shrubs and ornamental trees  
 64,289 minimum sq. ft. for evergreen trees

**GENERAL NOTES:**

- COORDINATE ALL TREE PLANTINGS WITH SMALL UTILITIES. TREES SHALL BE PLANTED A MIN. OF 2 FEET FROM ANY JOINT UTILITY TRENCH.
- COORDINATE ALL IRRIGATION SLEEVING W/ GRADING / PAVING CONTRACTOR.



**PLANT SCHEDULE:**

**Preferred Species -**

Code	Common Name	Scientific Name	Qty.	Size	Root	Remark
<b>Trees</b>						
<b>Deciduous</b>						
HB	Common Hackberry	<i>Celtis occidentalis</i>	21	2.5" Cal.	B&B	Single, straight trunk
WA	White Ash	<i>Fraxinus americana</i>	37	3" Cal.	B&B	Single, straight trunk
WO / BO	White Oak / Bur Oak	<i>Quercus alba / macrocarpa</i>	11	2.5" Cal.	B&B	Single, straight trunk
<b>Evergreen</b>						
BF	Balsam Fir	<i>Abies Balsama</i>	17	8" HL	B&B	Single, straight trunk
WP	Eastern White Pine	<i>Pinus strobus</i>	32	6" HL	B&B	Single, straight trunk
<b>Shrubs</b>						
<b>Deciduous</b>						
RSB	Regent Serviceberry	<i>Aamelanchier alnifolia (Regent)</i>	45	# 5 Cont.	Pot	Space 6' O.C.
ASB	Allegheny Serviceberry	<i>Aamelanchier laevis</i>	25	4" HL	B&B	Clump form
GBC	Glossy Black Chokeberry	<i>Aronia melanocarpa elata</i>	32	# 5 Cont.	Pot	Space 6' O.C.

**Accepted Species -**

Code	Common Name	Scientific Name	Qty.	Size	Root	Remark
<b>Trees</b>						
<b>Deciduous</b>						
ABM	Autumn Blaze Maple	<i>Acer x freemanii</i>	8	2.5" Cal.	B&B	Single, straight trunk
SDC / SSC	Snowdrift / Spring Snow Crab	<i>Malus 'Snowdrift' / 'Spring Snow'</i>	8	2.5" Cal.	B&B	Oval form
IW	Ironwood	<i>Ostrya virginiana</i>	15	2" Cal.	B&B	Single, straight trunk
LL / NL	Littleleaf / Norland Linden	<i>Tilia cordata / cordata 'Ronald'</i>	18	2" Cal.	B&B	Single, straight trunk
<b>Shrubs</b>						
<b>Deciduous</b>						
FSY	Gold Tide Forsythia	<i>Forsythia 'Cortasol'</i>	20	# 7 Cont.	Pot	
ABH	Annabelle Hydrangea	<i>Hydrangea arborescens 'Annabelle'</i>	154	# 3 Cont.	Pot	
NBK	Summer Wine Nivebark	<i>Physocarpus opulifolius Duncan</i>	128	# 3 Cont.	Pot	Space 5' O.C.
AWV	Anthony Waterer Spirea	<i>Spiraea x bumalda 'Anthony Waterer'</i>	173	# 3 Cont.	Pot	
DWL	Donald Wyman Lilac	<i>Syringa x prestoniae 'Donald Wyman'</i>	76	# 3 Cont.	Pot	
CAC	Compact American Cranberry Bush	<i>Viburnum trilobum 'Bailey Compact'</i>	351	# 3 Cont.	Pot	Space 5' O.C.
MJJ	Mint Julep Juniper	<i>Juniperus chinensis 'Montep'</i>	264	# 3 Cont.	Pot	
SGJ	Sargent Green Juniper	<i>Juniperus chinensis 'Sargentii vinds'</i>	82	# 3 Cont.	Pot	
MP	Dwarf Mugo Pine	<i>Pinus mugo pumilio</i>	58	# 3 Cont.	Pot	
<b>Perennials</b>						
SDO	Daylily	<i>Hemerocallis 'Stella de Oro'</i>	73	# 1 Cont.	Pot	
RS	Russian Sage	<i>Perovskia 'Flagran'</i>	48	# 1 Cont.	Pot	
YCF	Coneflower	<i>Redbeckia 'Goldstrum'</i>	436	# 1 Cont.	Pot	
SLV	Salvia	<i>Salvia nemorosa 'Carradonna'</i>	206	# 1 Cont.	Pot	
FRG	Feather Reed Grass	<i>Calamagrostis 'Stricta'</i>	35	# 1 Cont.	Pot	

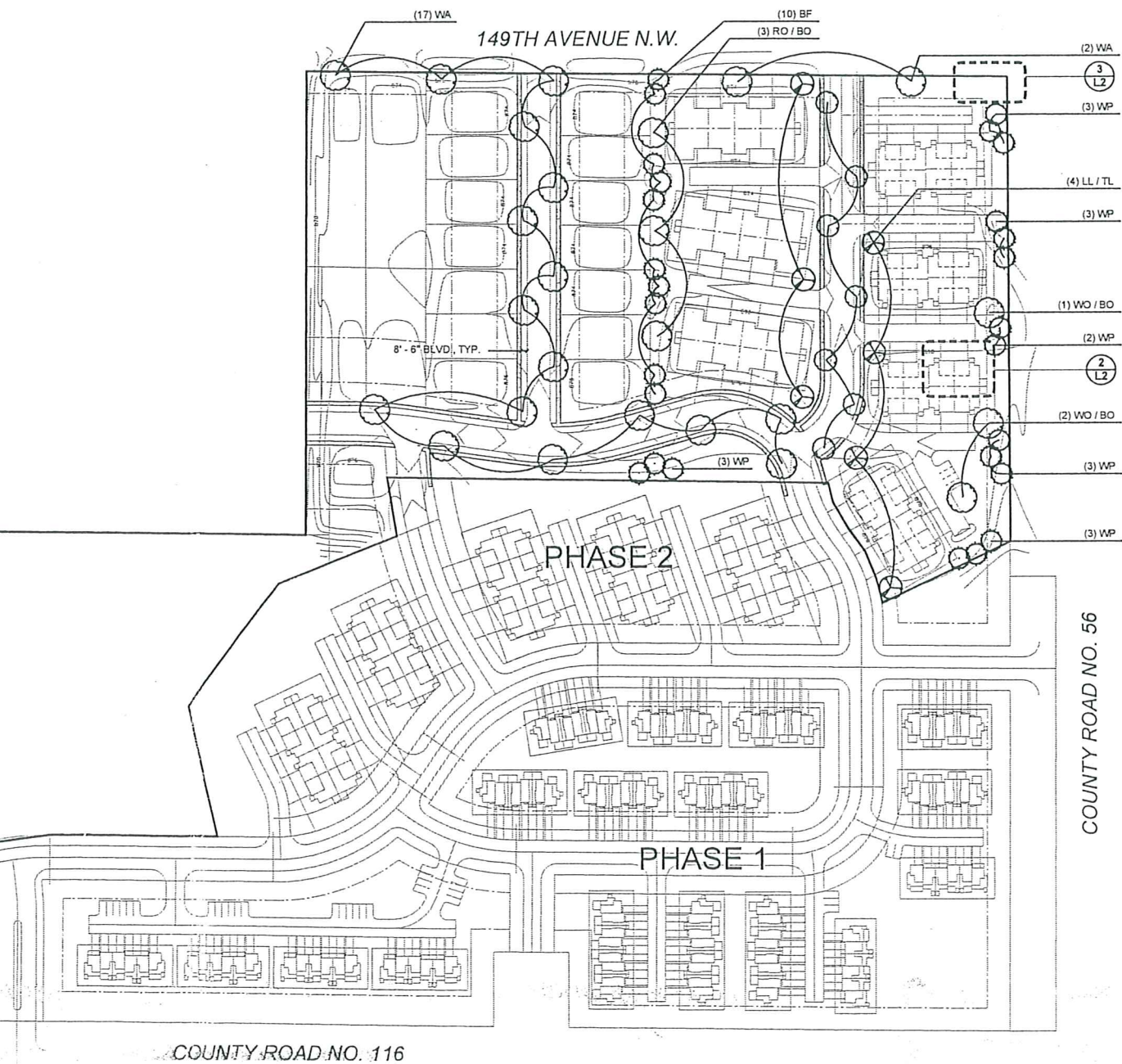
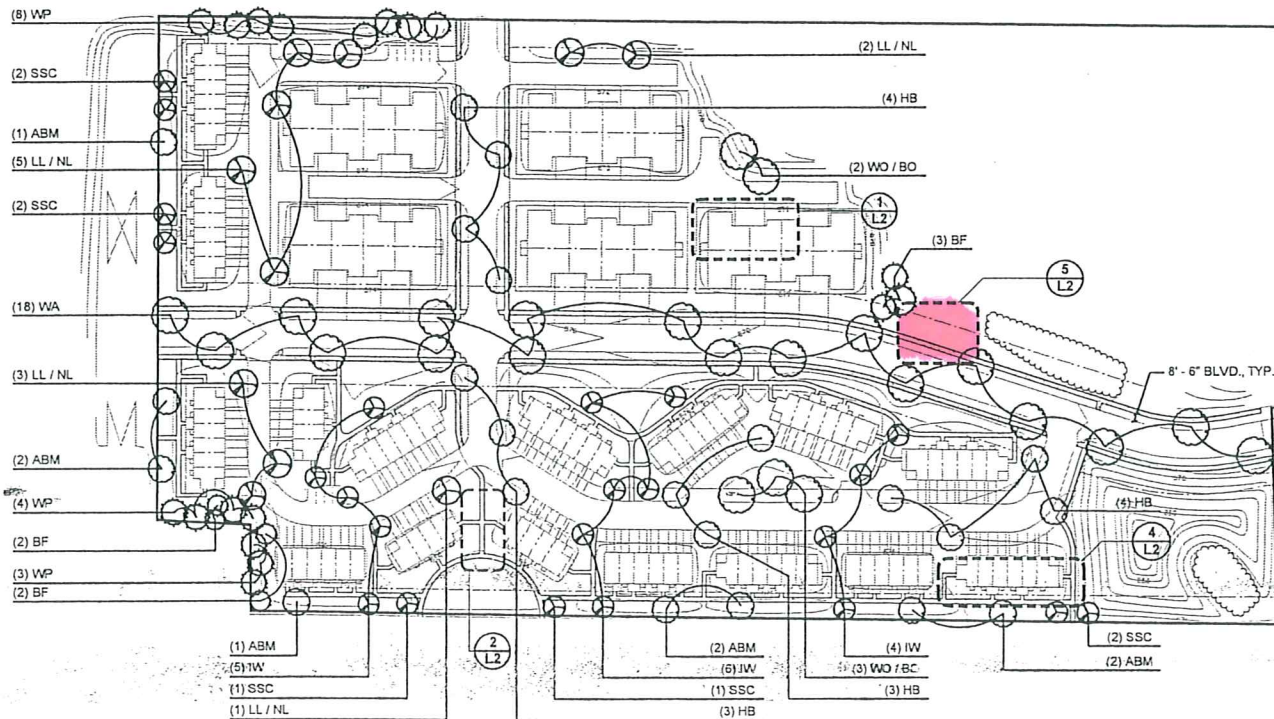
Canopy Spread Min.	Canopy Spread Max.	Canopy Cover (sq. ft.)	Total Canopy Cover
50	75	1,993	41,856
50	75	1,993	73,747
75	100	3,907	42,973
20	30	319	5,421
50	75	1,993	63,781
4	8	18	827
10	20	115	2,870
5	6	15	494

Canopy Spread Min.	Canopy Spread Max.	Canopy Cover (sq. ft.)	Total Canopy Cover
40	40	816	6,531
20	25	251	2,008
20	35	386	5,788
25	35	459	8,266
4	8	18	367
3	5	8	1,257
6	12	41	5,290
3	5	8	1,412
3	10	33	849
5	6	15	5,418
4	8	18	4,849
4	8	18	1,506
8	10	41	2,397
<b>Total Sq. Ft. of Canopy Proposed</b>			<b>277,910</b>
<b>Total Sq. Ft. of Canopy Required</b>			<b>242,548</b>
<b>Total Canopy Above Required</b>			<b>35,262</b>

2 LANDSCAPE EDGER  
L1 NOT TO SCALE

3 PERENNIAL & SHRUB PLANTING DETAIL  
L1 NOT TO SCALE

4 TREE PLANTING DETAIL  
L1 NOT TO SCALE



DEVELOPER  
**Bright Keys Development Corporation**  
 1808 Northwestern Avenue  
 STILLWATER, MINNESOTA 55802  
 651.430.1400  
 651.430.1505 Fax



LANDSCAPE ARCHITECT  
**Hoisington Koegler Group Inc.**  
 123 North 3rd Street, Suite 100  
 MINNEAPOLIS, MINNESOTA 55401  
 612.338.0800  
 612.338.6838 Fax

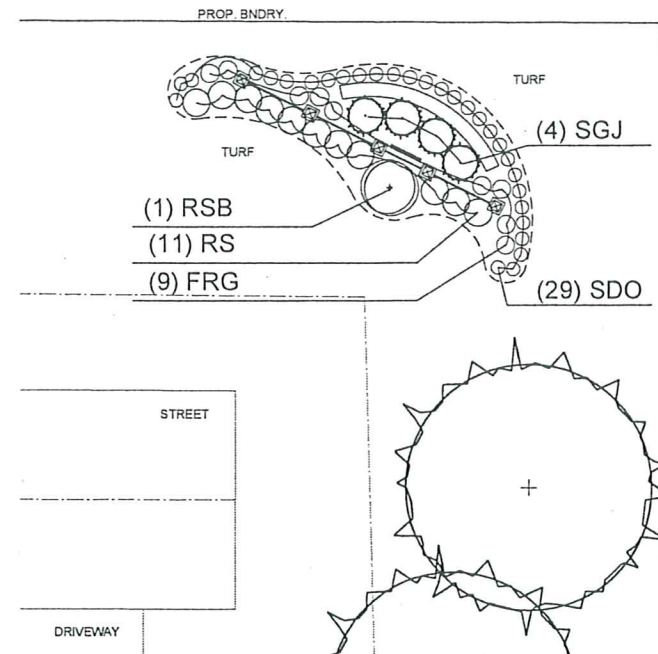
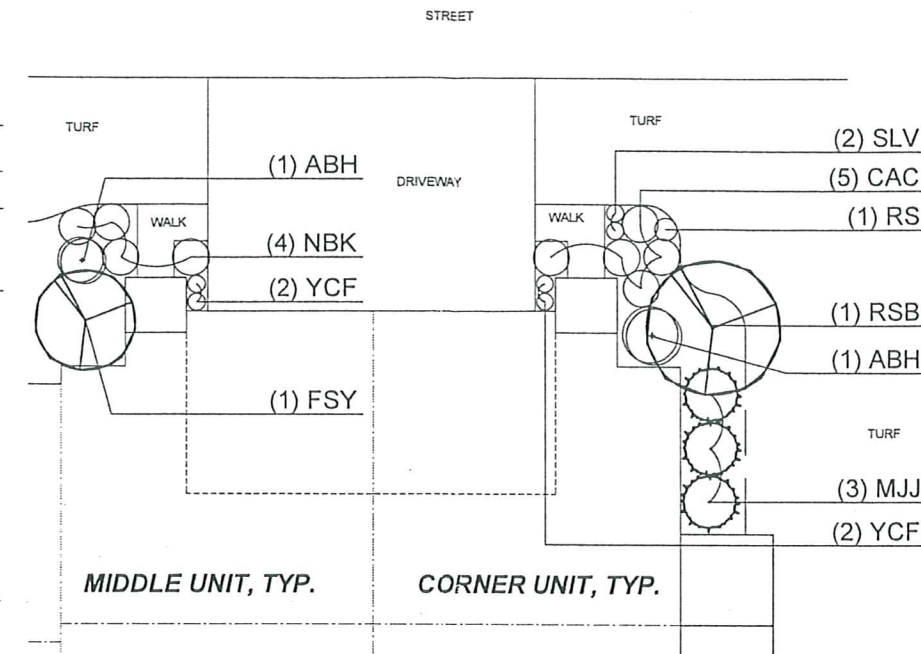
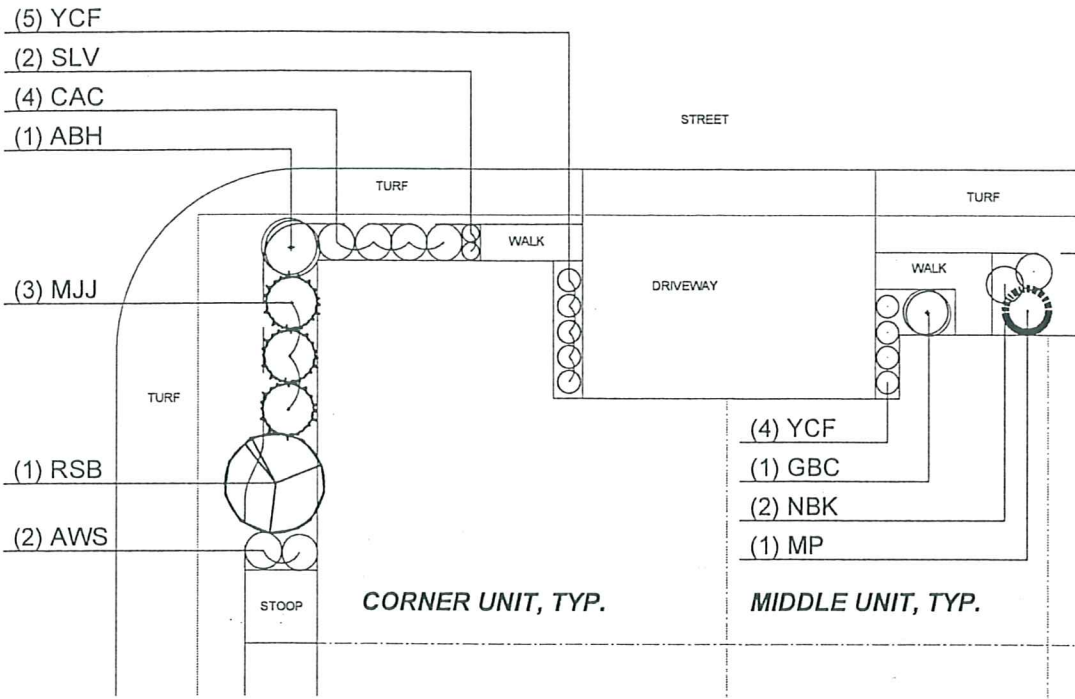
**TOWN CENTER GARDENS**  
 Phase 3 - Landscape Plans  
 RAMSEY, MINNESOTA

**CERTIFICATION:**  
 I HEREBY CERTIFY THAT THIS PLAN, SPECIFICATION OR REPORT WAS PREPARED BY ME OR UNDER MY DIRECT SUPERVISION AND THAT I AM A DULY LICENSED LANDSCAPE ARCHITECT UNDER THE LAWS OF THE STATE OF MINNESOTA.  
 SIGNED: \_\_\_\_\_  
 REC. NO.: FINAL PLAN SUBMITTAL  
 BO. SET: 21-MAR-2005  
 DATE: 04  
 DRAWN: JPB  
 CHECKED: 03-22  
 PROJ. NO.:  
 REVISIONS:



1 SITE LANDSCAPE PLAN  
L1

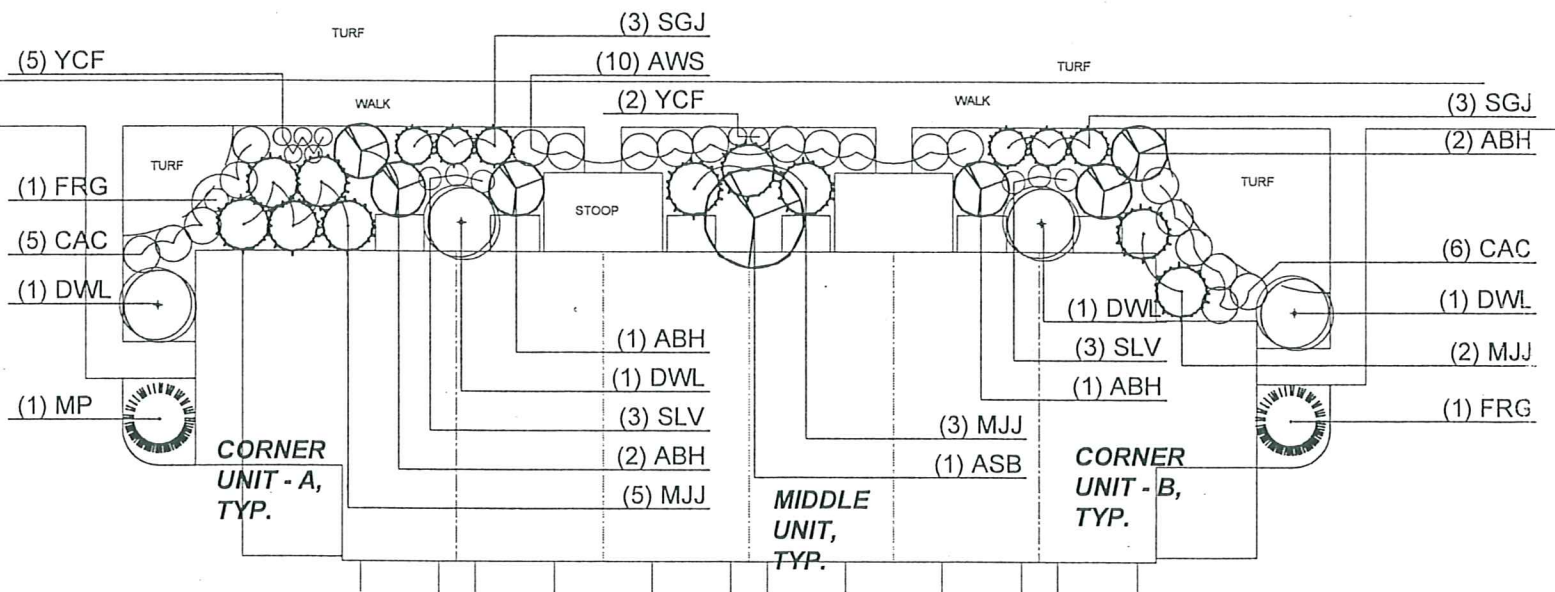




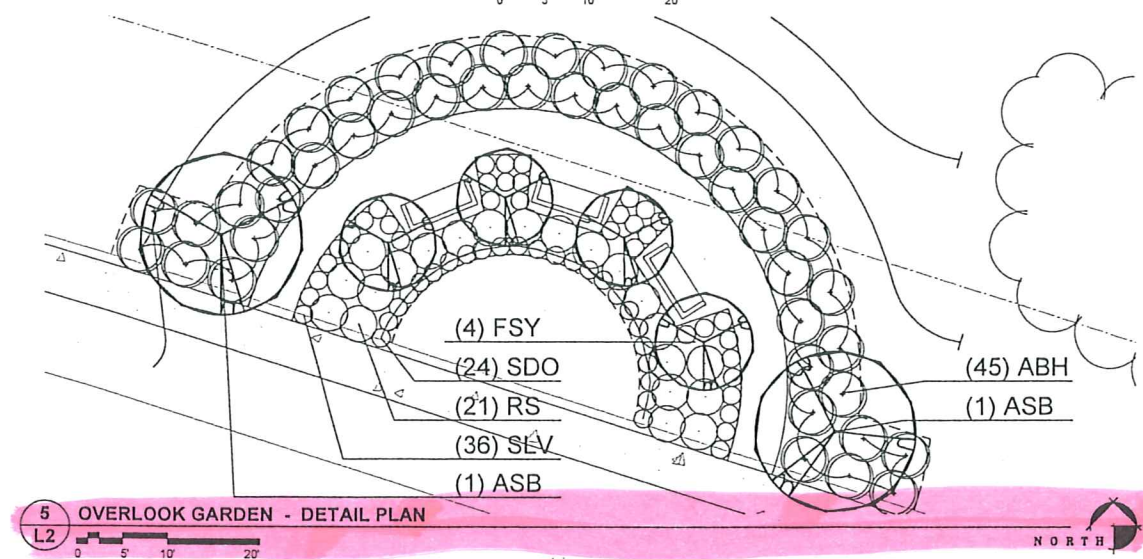
1 TYPICAL FOUNDATION LANDSCAPE PLAN - BACK-TO-BACK TYPE A  
L2 0 5 10 20

2 TYPICAL FOUNDATION LANDSCAPE PLAN - BACK-TO-BACK TYPE B  
L2 0 5 10 20

3 NORTHEAST ENTRY GARDEN - DETAIL PLAN  
L2 0 5 10 20



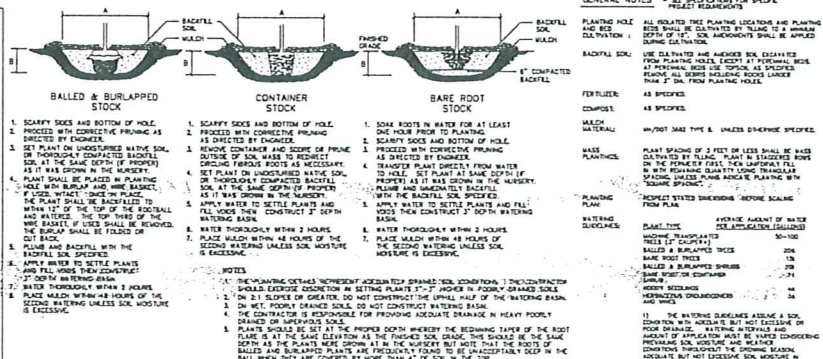
4 TYPICAL FOUNDATION LANDSCAPE PLAN - ROWHOUSE TOWNHOME  
L2 0 5 10 20



5 OVERLOOK GARDEN - DETAIL PLAN  
L2 0 5 10 20

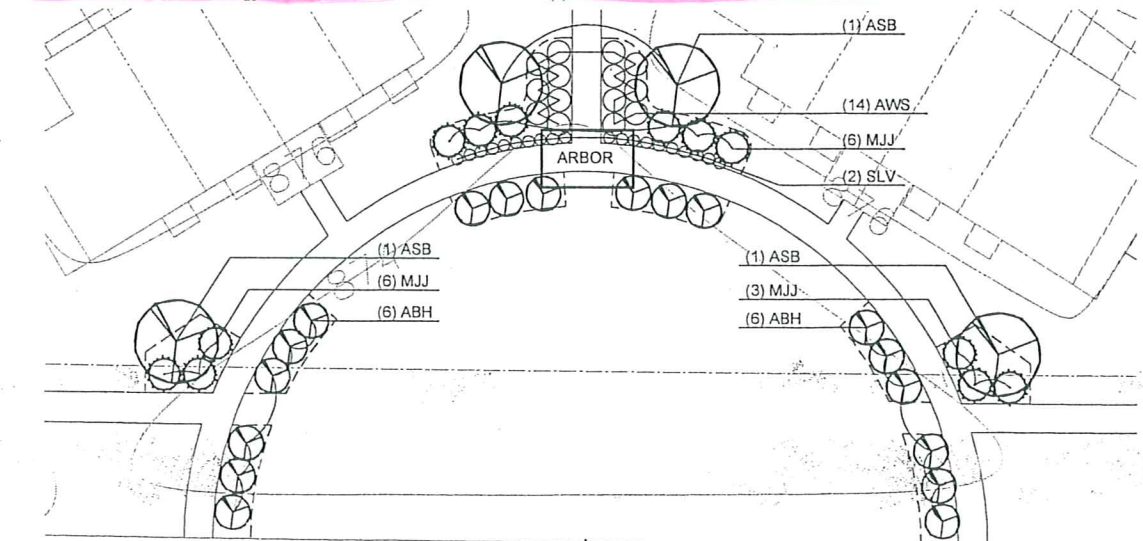
SEE NOTES FOR MASS PLANTING

PLANT TYPE	PLANTING HOLE DIMENSIONS		MIN. DEPTH	MIN. DISTANCE
	PLANT SIZE	PLANTING HOLE DIMENSIONS		
EVERGREEN SHRUBS (SPREADING)	1" x 1" x 1"	12" x 12" x 12"	8"	8"
	2" x 2" x 2"	18" x 18" x 18"	12"	12"
	3" x 3" x 3"	24" x 24" x 24"	16"	16"
DECIDUOUS SHRUBS	1" x 1" x 1"	12" x 12" x 12"	8"	8"
	2" x 2" x 2"	18" x 18" x 18"	12"	12"
	3" x 3" x 3"	24" x 24" x 24"	16"	16"
CONTAINER GROWN PLANTS	1" x 1" x 1"	12" x 12" x 12"	8"	8"
	2" x 2" x 2"	18" x 18" x 18"	12"	12"
	3" x 3" x 3"	24" x 24" x 24"	16"	16"



6 PLANTING SPECIFICATIONS  
L2

7 MULCH PLACEMENT DETAIL  
L2 NOT TO SCALE



8 ENTRY GARDEN - DETAIL PLAN  
L2 0 8 16 32

**Bright KEYS**  
BrightKEYS Development

DEVELOPER  
Bright Keys Development Corporation  
1809 Northwestern Avenue  
STILLWATER, MINNESOTA 55802  
651.430.1400  
651.430.1505 Fax

**HK 3i**  
LANDSCAPE ARCHITECT  
Hoisington Koegler Group Inc.  
123 North 3rd Street, Suite 100  
MINNEAPOLIS, MINNESOTA 55401  
612.338.0800  
612.338.6838 Fax

**TOWN CENTER GARDENS**  
Phase 3 - Landscape Plans  
RAMSEY, MINNESOTA

**LANDSCAPE DETAILS**

**CERTIFICATION:**  
I HEREBY CERTIFY THAT THIS PLAN, SPECIFICATION OR REPORT WAS PREPARED BY ME OR UNDER MY DIRECT SUPERVISION AND THAT I AM DULY LICENSED LANDSCAPE ARCHITECT UNDER THE LAWS OF THE STATE OF MINNESOTA.

SIGNED: \_\_\_\_\_  
DATE: \_\_\_\_\_  
DRAWN: \_\_\_\_\_  
CHECKED: \_\_\_\_\_  
PROJ. NO.: \_\_\_\_\_  
REVISIONS: \_\_\_\_\_

REG. NO.: FINAL PLAN SUBMITTAL  
NO. SET: 31-MAR-2003  
DATE: \_\_\_\_\_  
DRAWN: \_\_\_\_\_  
CHECKED: \_\_\_\_\_  
PROJ. NO.: \_\_\_\_\_  
REVISIONS: \_\_\_\_\_

**L2**