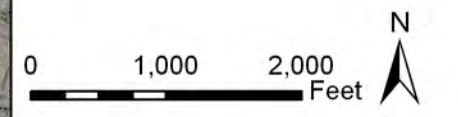




GREAT RIVER ENERGY

A Touchstone Energy® Cooperative

- Great River Energy
- Proposed Route
 - Conceptual Alignment
 - Conceptual Alternate Alignment
 - Existing Anoka Municipal Utility (AMU)
 - Distribution Substation
 - Transmission Substation
 - Existing Xcel Energy (XE)
 - 115 kV AC Transmission
 - 69 kV Transmission Line
 - 115 kV Transmission Line
 - Existing Great River Energy (GRE)
 - Map Key



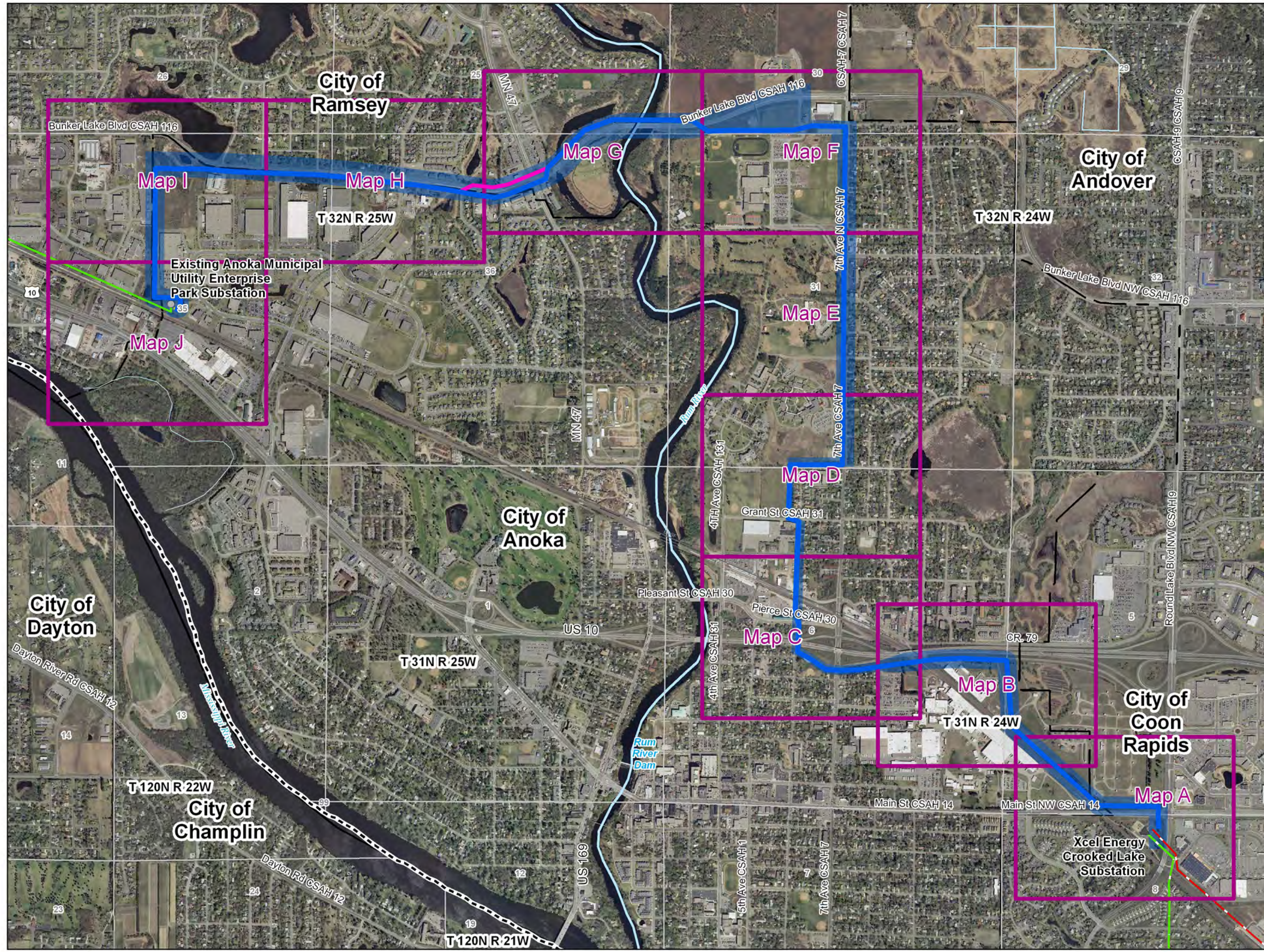
Data Sources Vary Between MNDOT, MNDNR, MNGEO and Great River Energy.
 2010 Color Orthophotos from Farm Services Administration.

Map Projection:
 UTM, NAD83, Zone15, Meters

**Enterprise Park
 115-kV Project
 Figure 4-1**

**Proposed Route
 Map Key**

Updated: 9/30/2011

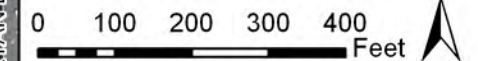




GREAT RIVER ENERGY®

A Touchstone Energy® Cooperative

- Great River Energy
 - Proposed Route
 - Conceptual Alignment
 - Conceptual Alternate Alignment
 - Easement Area (70 ft)
- Existing Anoka Municipal Utility (AMU)
 - Distribution Substation
- Existing Xcel Energy (XE)
 - Transmission Substation
- Existing Great River Energy (GRE)
 - 115 kV AC Transmission
 - 69 kV Transmission Line
 - 115 kV Transmission Line

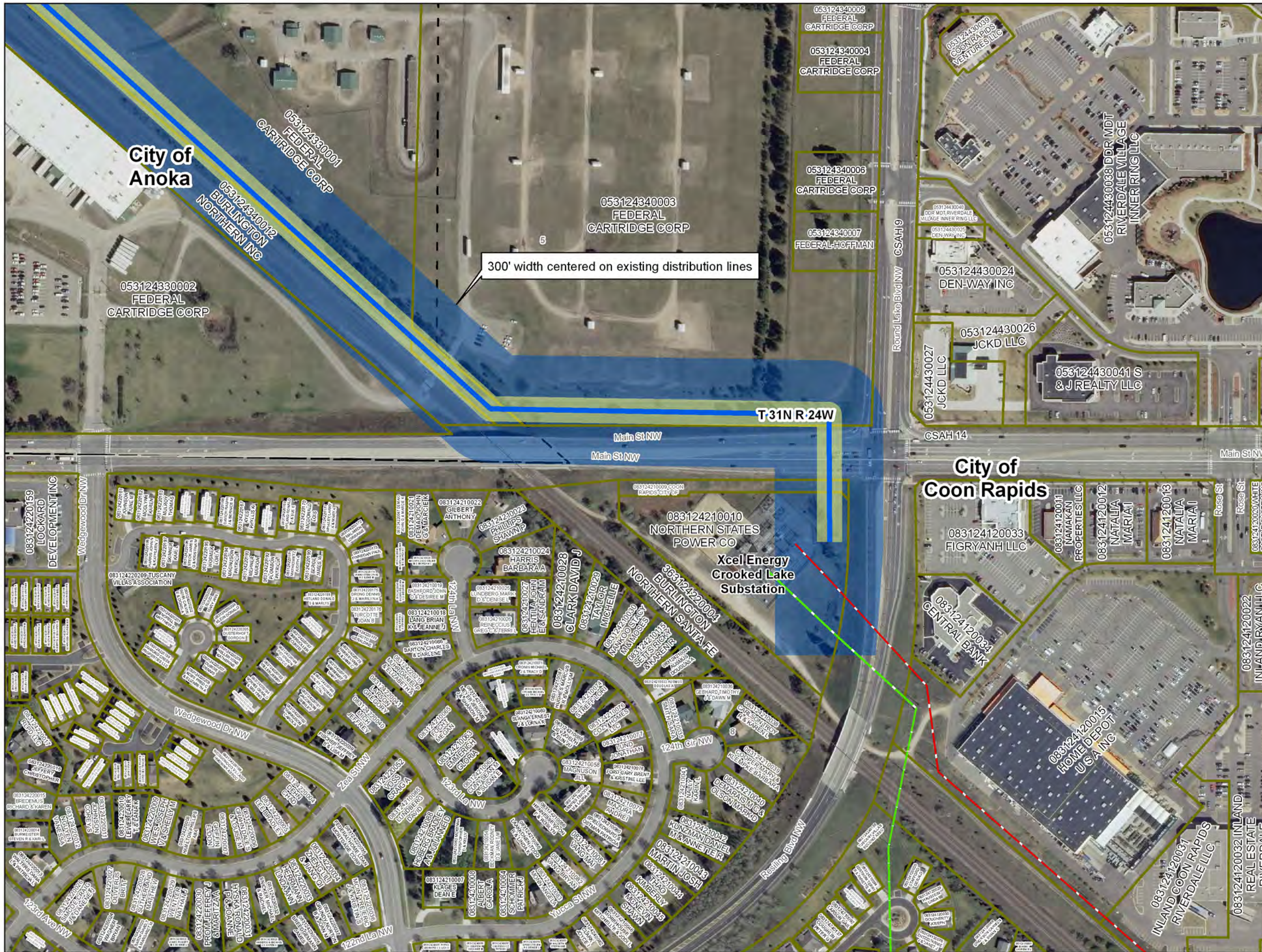


Data Sources Vary Between MNDOT, MNDNR, MNGEO and Great River Energy.
 2010 Color Orthophotos from Farm Services Administration.
 Parcel Data from Anoka County GIS.
 Map Projection: UTM, NAD83, Zone15, Meters

**Enterprise Park
 115-kV Project
 Figure 4-1A**

**Proposed Route
 Map A**

Updated: 9/30/2011



City of Anoka

City of Coon Rapids

300' width centered on existing distribution lines

T31N R.24W

Xcel Energy Crooked Lake Substation

NORTHERN STATES POWER CO

HOME DEPOT U.S.A. INC

GENERAL BANK

RIVERDALE VILLAGE INNER RING LLC

DEN-WAY INC

JCKD LLC

S & J REALTY LLC

FIGRYANH LLC

NAMAKAN PROPERTIES LLC

NATALIA MARIA I

NATALIA MARIA I

NATALIA MARIA I

INLAND RYAN LLC

INLAND REAL ESTATE RIVERDALE

INLAND COON RAPIDS RIVERDALE LLC

053124340005 FEDERAL CARTRIDGE CORP

053124340004 FEDERAL CARTRIDGE CORP

053124340006 FEDERAL CARTRIDGE CORP

053124340007 FEDERAL-HOFFMAN

033124430039 COON RAPIDS VENTURES LLC

053124430040 DDR MDT RIVERDALE VILLAGE INNER RING LLC

053124430025 DEN-WAY INC

053124430024 DEN-WAY INC

053124430027 JCKD LLC

053124430041 S & J REALTY LLC

053124340003 FEDERAL CARTRIDGE CORP

053124330001 FEDERAL CARTRIDGE CORP

053124340012 BURLINGTON NORTHERN INC

053124330002 FEDERAL CARTRIDGE CORP

083124220159 LOCKARD DEVELOPMENT INC

083124220110 JEFFERY CHRISTOPHER

123rd Ave NW

Wedgwood Dr NW

Zea St NW

122nd La NW

124th Cir NW

Yucca St NW

Resting Blvd NW

Round Lake Blvd NW CSAH 9

CSAH 14

Main St NW

Rose St

Rose St

INLAND RYAN LLC

INLAND REAL ESTATE RIVERDALE

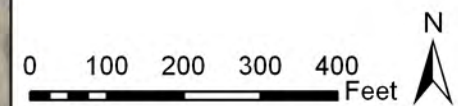
INLAND COON RAPIDS RIVERDALE LLC



GREAT RIVER ENERGY®

A Touchstone Energy® Cooperative

- Great River Energy
- Proposed Route
 - Conceptual Alignment
 - Conceptual Alternate Alignment
 - Easement Area (70 ft)
- Existing Anoka Municipal Utility (AMU)
- Distribution Substation
 - ▲ Transmission Substation
- Existing Xcel Energy (XE)
- 115 kV AC Transmission
- Existing Great River Energy (GRE)
- 69 kV Transmission Line
 - 115 kV Transmission Line

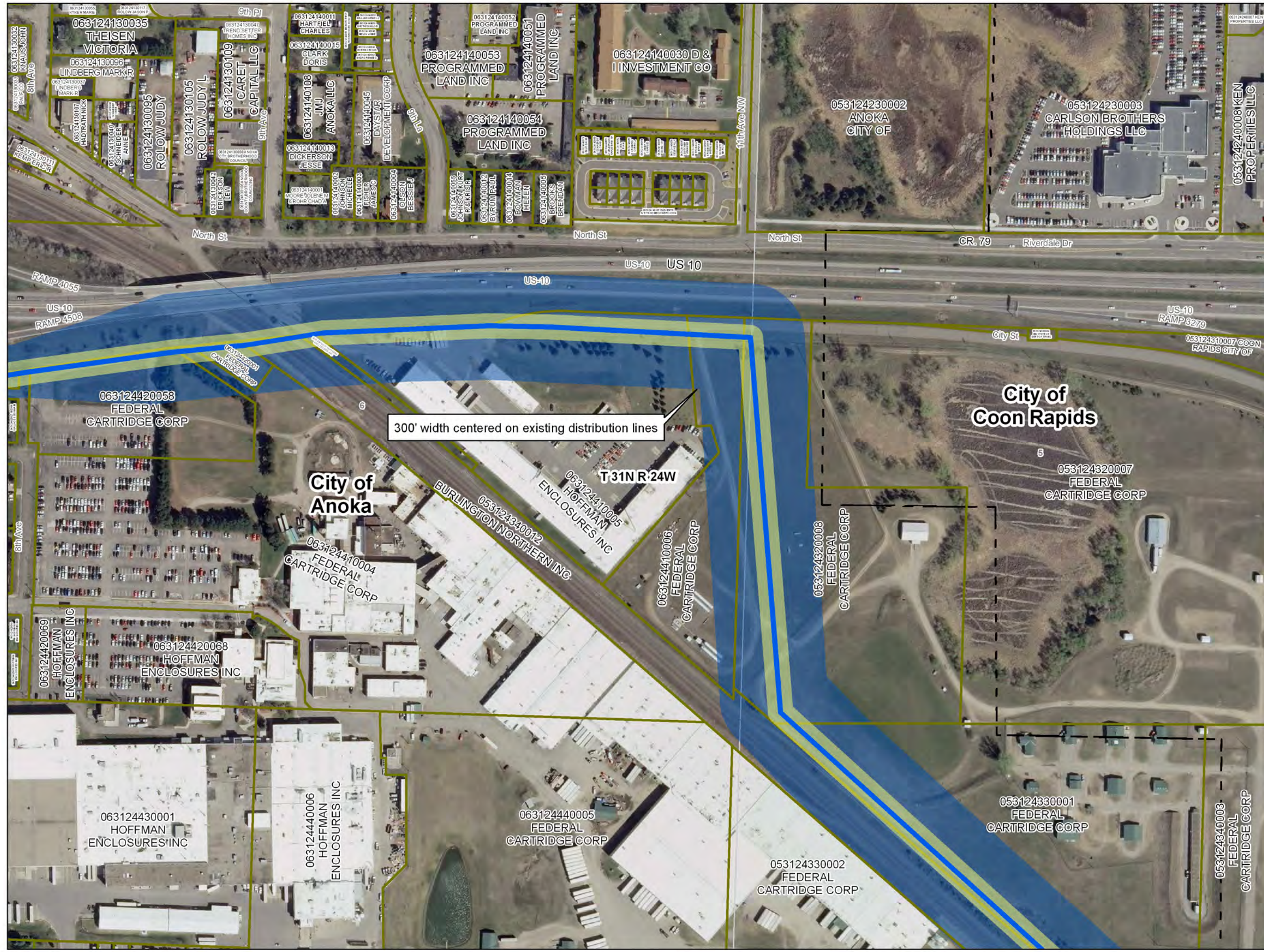


Data Sources Vary Between MNDOT, MNDNR, MNGEO and Great River Energy. 2010 Color Orthophotos from Farm Services Administration. Parcel Data from Anoka County GIS. Map Projection: UTM, NAD83, Zone15, Meters

**Enterprise Park
115-kV Project
Figure 4-1B**

**Proposed Route
Map B**

Updated: 9/30/2011



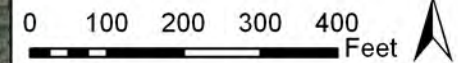
300' width centered on existing distribution lines



GREAT RIVER ENERGY®

A Touchstone Energy® Cooperative

- Great River Energy
- Proposed Route
- Conceptual Alignment
- Conceptual Alternate Alignment
- Easement Area (70 ft)
- Existing Anoka Municipal Utility (AMU)
 - Distribution Substation
- Existing Xcel Energy (XE)
 - Transmission Substation
- Existing Great River Energy (GRE)
 - 115 kV AC Transmission
- Existing Anoka Municipal Utility (AMU)
 - 69 kV Transmission Line
- Existing Xcel Energy (XE)
 - 115 kV Transmission Line



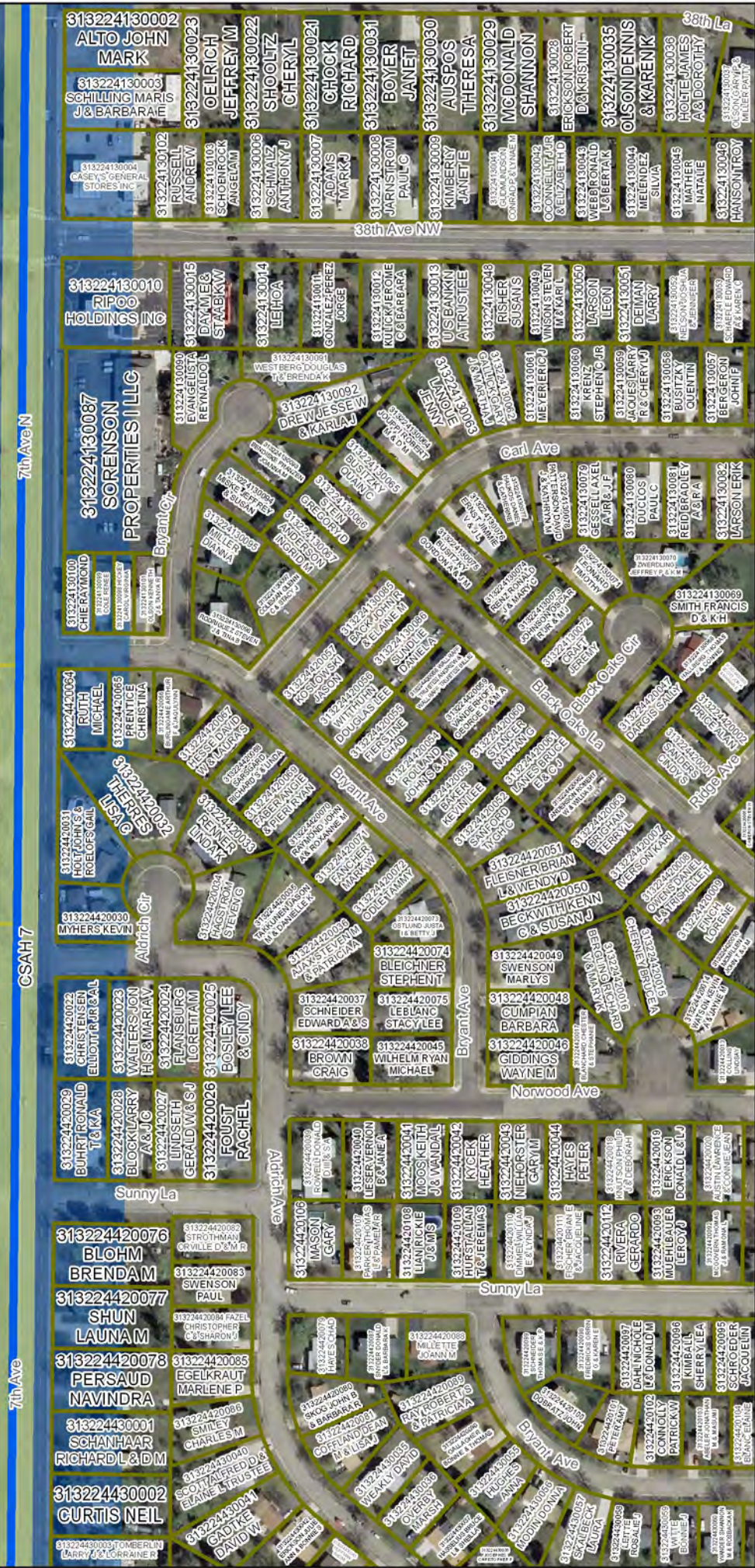
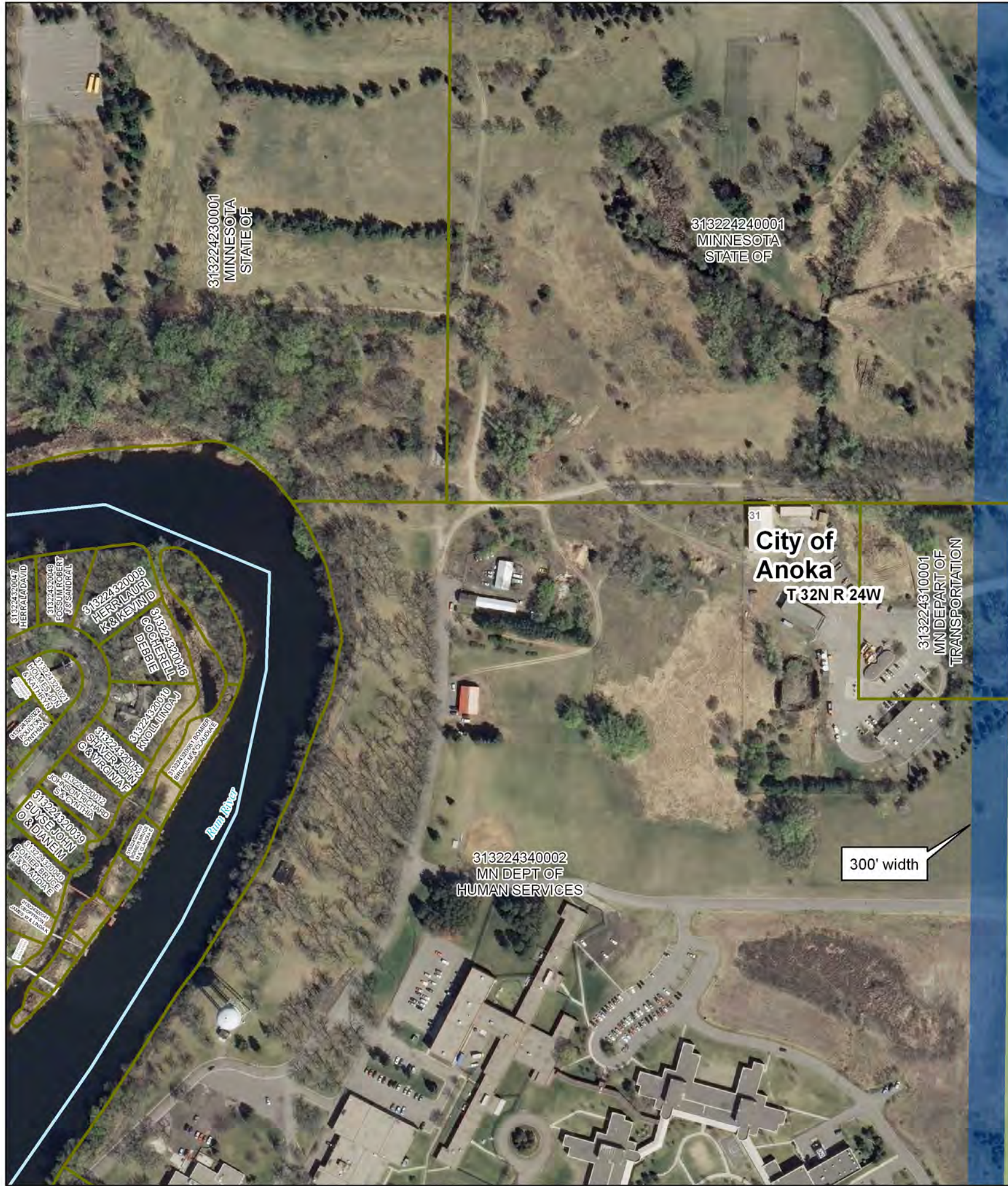
Data Sources Vary Between MNDOT, MNDNR, MNGEO and Great River Energy.
 2010 Color Orthophotos from Farm Services Administration.
 Parcel Data from Anoka County GIS.
 Map Projection: UTM, NAD83, Zone15, Meters

**Enterprise Park
 115-kV Project
 Figure 4-1D**

**Proposed Route
 Map D**

Updated: 9/30/2011

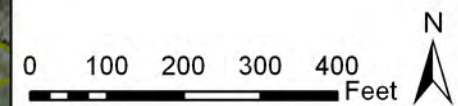




GREAT RIVER ENERGY[®]

A Touchstone Energy[®] Cooperative

- Great River Energy
- Proposed Route
 - Conceptual Alignment
 - Conceptual Alternate Alignment
 - Easement Area (70 ft)
- Existing Anoka Municipal Utility (AMU)
- Distribution Substation
 - ▲ Transmission Substation
- Existing Xcel Energy (XE)
- 115 kV AC Transmission
- Existing Great River Energy (GRE)
- 69 kV Transmission Line
 - 115 kV Transmission Line



Data Sources Vary Between MNDOT, MNDNR, MNGEO and Great River Energy.
 2010 Color Orthophotos from Farm Services Administration.
 Parcel Data from Anoka County GIS.
 Map Projection: UTM, NAD83, Zone15, Meters

**Enterprise Park
 115-kV Project
 Figure 4-1E**

**Proposed Route
 Map E**

Updated: 9/30/2011