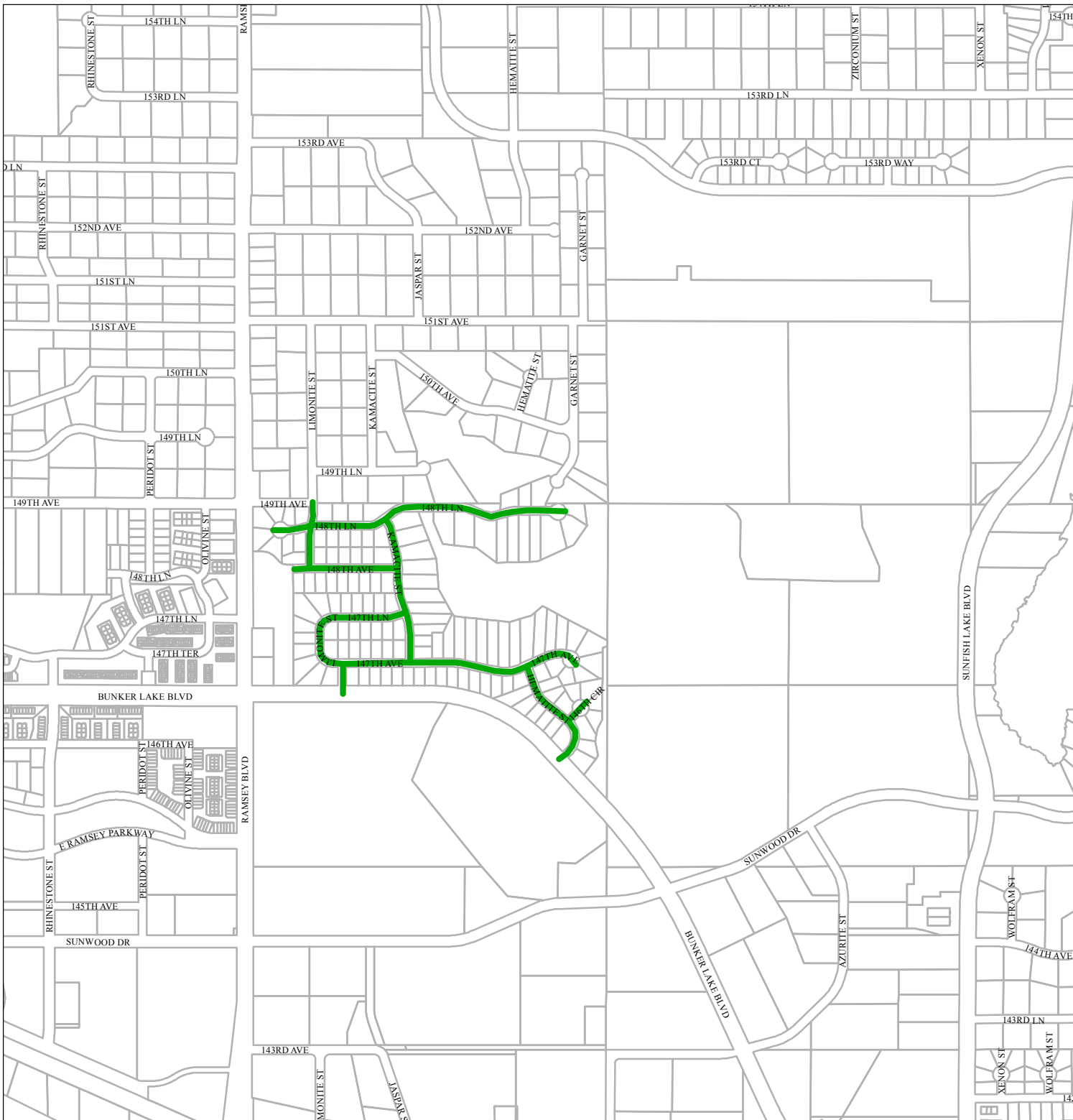


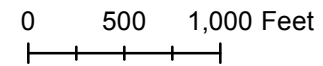


2013 Street Maintenance Program

Exhibit D
Regency Pond, Regency Pond 2nd,
Regency Pond 3rd



-  Sealcoat 2013
-  Parcels



This map has been compiled using information gathered from various governmental offices and other sources and is to be used for reference purposes only. It is neither a legally recorded map nor a survey and is not intended for use as one. The Geographic Information System (GIS) data used to develop this map is not warranted by the City as being error-free.

The City does not represent that the GIS data can be used for exact measurement of distance or direction or precision in the depiction of geographic features. If errors or discrepancies are found, please contact (763) 427-1410.

The City of Ramsey disclaims any responsibility for or liability for the accuracy of the information at any point of initial contact with a GIS to which the public has general access. The preceding disclaimer is provided pursuant to Minnesota Statute 466.03, Subd. 21 (2000), and the user of this map acknowledges that the City of Ramsey is immune from any and all claims brought by User, its employees or agents, or third parties which arise out of the user's access of the data.