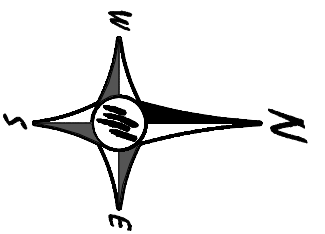
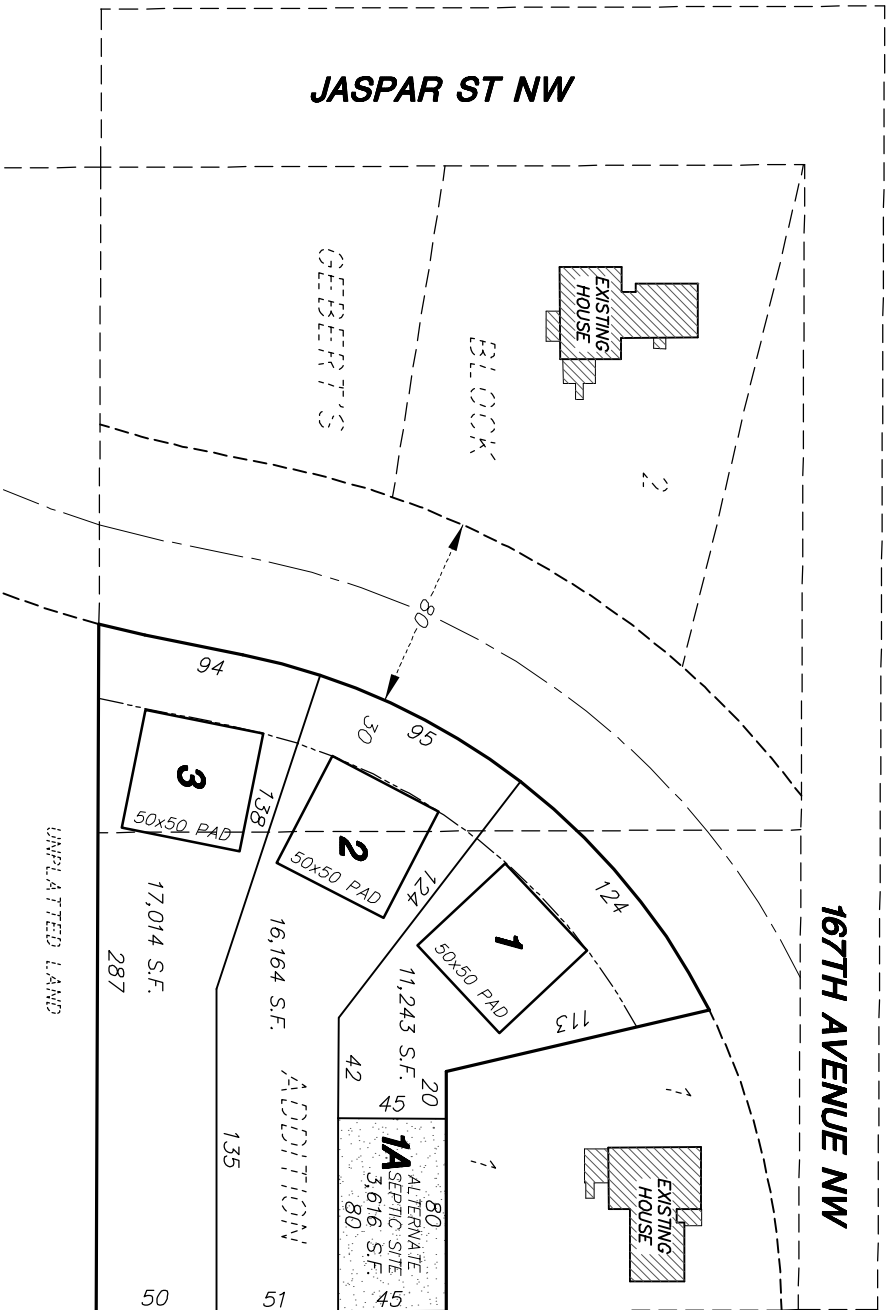


# SKETCH OF PROPOSED LOTS OAKWOOD ACRES

(PART OF LOTS 1 AND 2, BLOCK 1, GEBBERT'S ADDITION)

TOTAL AREA = 48,037 S.F. OR 1.1 ACRES



SCALE IN FEET  
1 INCH = 80 FEET

LOOYEN'S ADDITION  
LOT 1, BLOCK 1

**ANDERSON PASSE & ASSOC., INC.**

REGISTERED PROFESSIONAL ENGINEERS  
LICENSED LAND SURVEYORS

DWG: 75-13 JUNE 12, 2013