

**BUILDING PAD LEGEND**

909.0	GARAGE FLOOR ELEVATION
FWO/MWO/SWO	TYPE OF BUILDING
FLO/MLO/F	TYPE OF BUILDING
901.5	LOWEST FLOOR ELEVATION
909.0	LOWEST OPENING ELEVATION

**BUILDING TYPE LEGEND**

F	FULL BASEMENT
FWO	FULL BASEMENT WALKOUT
MWO	MODIFIED (NON STANDARD) WALKOUT BASEMENT VARIABLE 5 - 12 COURSE BASEMENT
SWO	SPLIT ENTRY WALKOUT BASEMENT (5 COURSE)
FLO	FULL BASEMENT LOOKOUT ON 5 COURSE
MLO	MODIFIED (NON STANDARD) LOOKOUT BASEMENT VARIABLE 5 - 12 COURSE BASEMENT

DATE	REVISIONS	BY
9/24/13	road connection to east	BT

**ANDERSON PASSE**  
 & ASSOCIATES  
 200 3RD AVE NE, SUITE 100  
 CAMBRIDGE, MINNESOTA 55008  
 phone 763-689-4042 fax 763-689-6661

**BROOKFIELD 4TH ADDITION**  
 GRADING, DRAINAGE, & SWPP PLAN  
 RAMSEY, MINNESOTA

DATE: 8-29-13  
 PROJECT: 127-13  
 SCALE: 1"=100'  
 DRAWN: BT  
 CHECKED: BT  
 APPROVED: BT

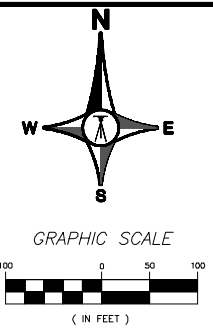
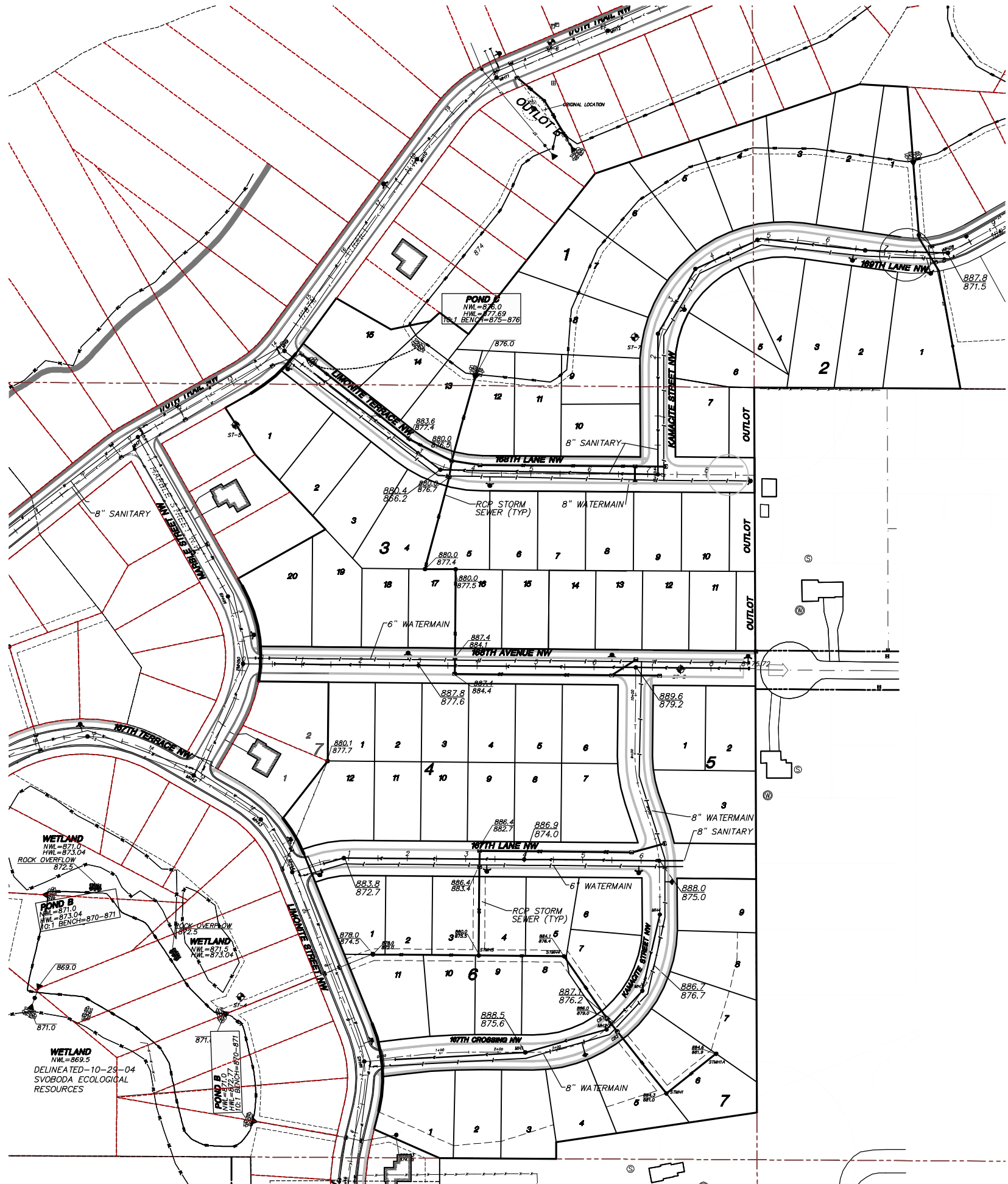
1. HEREBY CERTIFY THAT THIS PLAN, SPECIFICATION, OR REPORT WAS PREPARED BY ME, OR UNDER MY SUPERVISION AND THAT I AM A LICENSED PROFESSIONAL ENGINEER UNDER THE LAWS OF THE STATE OF MINNESOTA.

REC. NO. 24018  
 DATE: 8-29-13  
 BRYN ROSSELL









**MATERIALS**  
 WATER  
 WATER MAIN - 6" & 8" CL 52 DIP  
 WATER SERVICE - 1" TYPE K COPPER  
 SANITARY  
 SANITARY MAIN - 8" SDR 35 & SDR 26 PVC  
 SANITARY SERVICE - 4" SDR 35 PVC

-ALL SANITARY SERVICES CONNECTED TO 8" DR 18 PIPE MUST INCLUDE CONCRETE AROUND THE WYE AND ELBOW.  
 -10' TYPICAL HORIZONTAL SEPARATION BETWEEN SANITARY SEWER AND WATERMAIN.  
 -3' TYPICAL HORIZONTAL SEPARATION BETWEEN SANITARY AND WATER SERVICES.  
 -HYDRANTS LOCATED 5' FROM BACK OF CURB.  
 -WYE STATIONED FROM DOWNSTREAM MH.  
 -CURB STOPS SHALL BE PLACED @ PROPERTY LINE UNLESS SIDEWALK IS SHOWN THEN STUB INTO LOT 9' PAST R.O.W.

**WETLAND**  
 NWL=871.0  
 HWL=873.04  
 ROCK OVERFLOW  
 872.5

**POND B**  
 NWL=871.0  
 HWL=873.04  
 10:1 BENCH=870-871

**WETLAND**  
 NWL=871.0  
 HWL=873.04

**WETLAND**  
 NWL=869.5  
 DELINEATED-10-29-04  
 SVOBODA ECOLOGICAL  
 RESOURCES

**POND B**  
 NWL=871.0  
 HWL=873.04  
 10:1 BENCH=870-871

DATE	REVISIONS	BY
9/24/13	plot w/ road connection to east	br

**ANDERSON PASSE**  
 & ASSOCIATES  
 200 3RD AVE NE, SUITE 100  
 CAMBRIDGE, MINNESOTA 55008  
 Phone 763-689-4042 fax 763-689-6681

**BROOKFIELD 4TH**  
**ADDITION**  
 PRELIMINARY UTILITIES  
 RAMSEY, MINNESOTA

DATE: 8-29-13  
 REG. NO.: 84919  
 DRAWN BY: *Ben Rodwell*  
 CHECKED BY: *Ben Rodwell*  
 APPROVED BY: *Ben Rodwell*

DATE	SCALE	PROJECT	CHECKED	APPROVED
	1"=100'	127-13	BR	BR

**U1**