



Studio 55 Architects, LLP
 10700 Highway 55, suite 317
 Plymouth, MN 55441
 765.544.8370
 studio55architects.com

ELMCREST PARK COMMUNITY BUILDING

RAMSEY, MINNESOTA

I hereby certify that this plan, specification, or report was prepared by me or under my direct supervision, and that I am a duly Licensed Architect under the laws of the State of Minnesota.

Printed Name: Bruce P. Bissonette
 Signature: _____
 Date: 10/25/13 License #: 29592
 Project: 13-0110-01
 Date: 10/25/13
 Drawn by: B.J.R.
 Checked by: B.P.B.
 Drawing Number: A-21

ROOM NO	ROOM NAME	FLOOR	WALLS	CEILING	HEIGHT	NOTES
101	LOBBY	POISHED CONC.	PAINT/WOOD	WOOD	9'-0"-3"	SEE 1, 2, & 3
102	CONCESSION	F.F.F.	WOOD	WOOD	9'-0"	SEE 1
103	OFFICE	POISHED CONC.	PAINT	WOOD	9'-0"	SEE 1
104	MENS	TILE	TILE	GRP. BO.	9'-0"	SEE 1, 4, & 5
105	WOMENS	TILE	TILE	GRP. BO.	9'-0"	SEE 1, 4, & 5
106	MECH/ELEC.	CONCRETE	CONCRETE	WOOD	9'-0"	SEE 1, 4, & 5
107	MECH/ELEC.	CONCRETE	CONCRETE	WOOD	9'-0"	SEE 1
108	MECH/ELEC.	CONCRETE	CONCRETE	WOOD	9'-0"	SEE 1
109	STORAGE	CONCRETE/PAINT	PAINT	WOOD	9'-0"-3"	SEE 1, 4, & 5
110	FRONT KIOSK	CONCRETE	PAINT/WOOD	WOOD	9'-0"-3"	SEE 1, 4, & 5
201	OFFICE	CORPET	GRP. BO.	WOOD	8'-0"	SEE 1

FINISH SCHEDULE NOTES

1. TYPE SAND AND PAINT GRP. BO. AND PAINT
2. ROUGH-SAWN WOOD WANSKOT - RANDOM WIDTH - VERTICAL
3. 1 x 6 TONGUE AND GROOVE PNE - STAINED AND VARNISH - SLOPED
4. PAINT WALLS EPOXY PAINT - WHITE
5. LIGHT COVE SPOFT
6. -

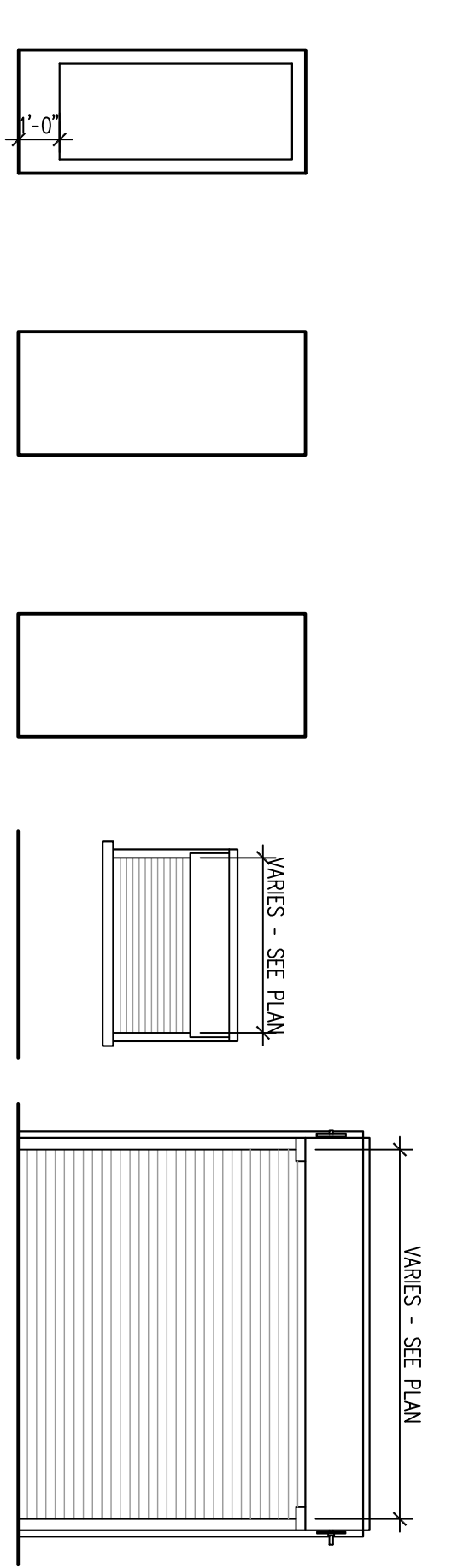
ROOM FINISH GENERAL NOTES

- FLAME SPREAD AND SMOKE DEVELOPMENT REQUIREMENTS SHALL BE MET ON ALL INTERIOR FINISHES PER 2006 INTERNATIONAL BUILDING CODE TABLE 803.5
- PAINT EXTERIOR DOORS AND FRAMES TO ADJACENT WALL COLOR

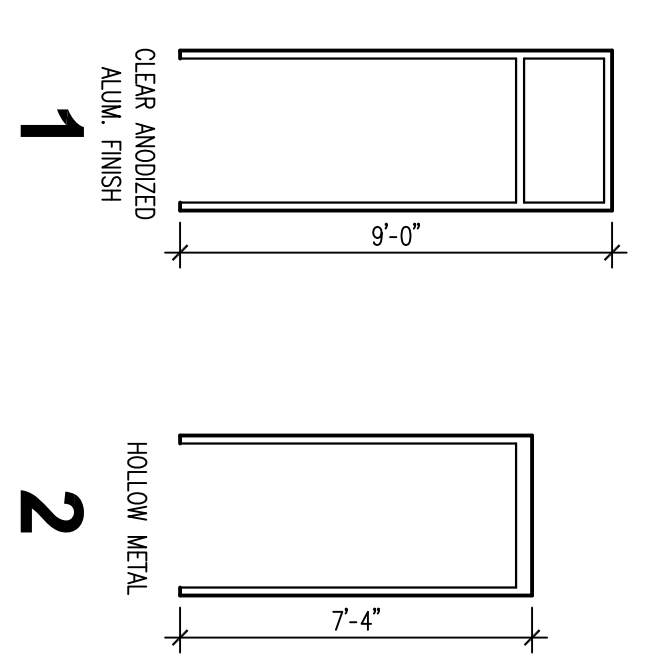
DOOR NO	SIZE	DOOR	FRAME	NOTES
101A	3'-0" x 7'-0" 1 3/4"	ALUM.	ALUM.	ALUM. ENTRY DOOR AND ADJACENT WINDOWS
101B	3'-0" x 7'-0" 1 3/4"	ALUM.	ALUM.	ALUM. ENTRY DOOR AND ADJACENT WINDOWS
101C	3'-0" x 7'-0" 1 3/4"	ALUM.	ALUM.	ALUM. ENTRY DOOR AND ADJACENT WINDOWS
101D	3'-0" x 7'-0" 1 3/4"	ALUM.	ALUM.	ALUM. ENTRY DOOR AND ADJACENT WINDOWS
102A	3'-0" x 7'-0" 1 3/4"	H.M.	2	20 MINUTE FIRE RATED, STAINLESS STEEL KICKPLATE
102B	3'-0" x 7'-0" 1 3/4"	H.M.	2	COUNTER HEIGHT ROLLING ALUM. DOOR
102C	8'-0" x 7'-0" 1 3/4"	ALUM.	2	STAINLESS STEEL KICKPLATE
103	3'-0" x 7'-0" 1 3/4"	H.M.	2	STAINLESS STEEL KICKPLATE
104B	3'-0" x 7'-0" 1 3/4"	H.M.	2	STAINLESS STEEL KICKPLATE
105A	3'-0" x 7'-0" 1 3/4"	H.M.	2	STAINLESS STEEL KICKPLATE
105B	3'-0" x 7'-0" 1 3/4"	H.M.	2	STAINLESS STEEL KICKPLATE
105C	3'-0" x 7'-0" 1 3/4"	H.M.	2	STAINLESS STEEL KICKPLATE
105D	3'-0" x 7'-0" 1 3/4"	H.M.	2	STAINLESS STEEL KICKPLATE
105E	3'-0" x 7'-0" 1 3/4"	H.M.	2	STAINLESS STEEL KICKPLATE
105F	3'-0" x 7'-0" 1 3/4"	H.M.	2	STAINLESS STEEL KICKPLATE
105G	3'-0" x 7'-0" 1 3/4"	H.M.	2	STAINLESS STEEL KICKPLATE
105H	3'-0" x 7'-0" 1 3/4"	H.M.	2	STAINLESS STEEL KICKPLATE
105I	3'-0" x 7'-0" 1 3/4"	H.M.	2	STAINLESS STEEL KICKPLATE
105J	3'-0" x 7'-0" 1 3/4"	H.M.	2	STAINLESS STEEL KICKPLATE
105K	3'-0" x 7'-0" 1 3/4"	H.M.	2	STAINLESS STEEL KICKPLATE
105L	3'-0" x 7'-0" 1 3/4"	H.M.	2	STAINLESS STEEL KICKPLATE
105M	3'-0" x 7'-0" 1 3/4"	H.M.	2	STAINLESS STEEL KICKPLATE
105N	3'-0" x 7'-0" 1 3/4"	H.M.	2	STAINLESS STEEL KICKPLATE
105O	3'-0" x 7'-0" 1 3/4"	H.M.	2	STAINLESS STEEL KICKPLATE
105P	3'-0" x 7'-0" 1 3/4"	H.M.	2	STAINLESS STEEL KICKPLATE
105Q	3'-0" x 7'-0" 1 3/4"	H.M.	2	STAINLESS STEEL KICKPLATE
105R	3'-0" x 7'-0" 1 3/4"	H.M.	2	STAINLESS STEEL KICKPLATE
105S	3'-0" x 7'-0" 1 3/4"	H.M.	2	STAINLESS STEEL KICKPLATE
105T	3'-0" x 7'-0" 1 3/4"	H.M.	2	STAINLESS STEEL KICKPLATE
105U	3'-0" x 7'-0" 1 3/4"	H.M.	2	STAINLESS STEEL KICKPLATE
105V	3'-0" x 7'-0" 1 3/4"	H.M.	2	STAINLESS STEEL KICKPLATE
105W	3'-0" x 7'-0" 1 3/4"	H.M.	2	STAINLESS STEEL KICKPLATE
105X	3'-0" x 7'-0" 1 3/4"	H.M.	2	STAINLESS STEEL KICKPLATE
105Y	3'-0" x 7'-0" 1 3/4"	H.M.	2	STAINLESS STEEL KICKPLATE
105Z	3'-0" x 7'-0" 1 3/4"	H.M.	2	STAINLESS STEEL KICKPLATE
110A	10'-4" x 7'-0"	STEEL	4	ALUM. ENTRY DOOR
110B	10'-4" x 7'-0"	STEEL	4	ALUM. ENTRY DOOR
110C	10'-4" x 7'-0"	STEEL	4	ALUM. ENTRY DOOR
110D	10'-4" x 7'-0"	STEEL	4	ALUM. ENTRY DOOR
110E	10'-4" x 7'-0"	STEEL	4	ALUM. ENTRY DOOR
110F	10'-4" x 7'-0"	STEEL	4	ALUM. ENTRY DOOR
110G	10'-4" x 7'-0"	STEEL	4	ALUM. ENTRY DOOR
110H	10'-4" x 7'-0"	STEEL	4	ALUM. ENTRY DOOR
110I	10'-4" x 7'-0"	STEEL	4	ALUM. ENTRY DOOR
110J	10'-4" x 7'-0"	STEEL	4	ALUM. ENTRY DOOR
110K	10'-4" x 7'-0"	STEEL	4	ALUM. ENTRY DOOR

- FLAME SPREAD AND SMOKE DEVELOPMENT REQUIREMENTS SHALL BE MET ON ALL INTERIOR FINISHES PER 2006 INTERNATIONAL BUILDING CODE TABLE 803.5
- PAINT EXTERIOR DOORS AND FRAMES TO MATCH ADJACENT WALL COLOR - VERIFY

DOOR / FRAME TYPES



- A** 36" x 84" CLEAR ANODIZED ALUM. FINISH, GLASS IS 5/8" TEMPERED INSULATED
- B** 36" x 84" HOLLOW METAL, INSULATED
- C** 36" x 84" HOLLOW METAL
- D** ALUM. COIL
- E** STEEL COIL

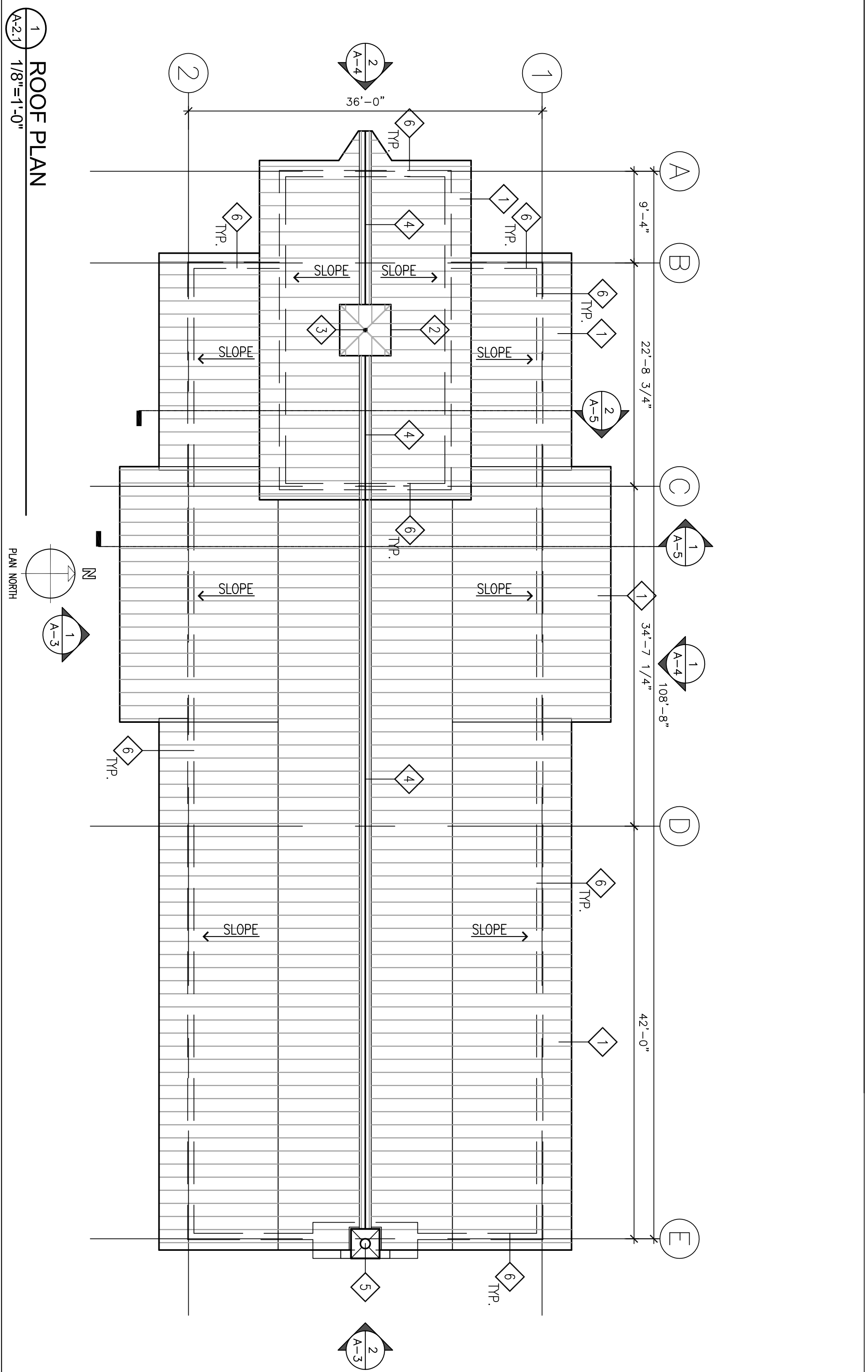


ROOF PLAN KEYED NOTES

1. 24 GAUGE PREFINISHED METAL ROOF SYSTEM - SMALL BRITNS @ 16 O.C.
2. MECHANICAL COURTA W/ PREFINISHED METAL ROOF SYSTEM
3. DECORATIVE FINAL ON TOP OF COURTA
4. ROOF VENT TO MATCH PREFINISHED METAL ROOF SYSTEM
5. REPLACE FLUE W/ SWACK CAP
6. DASHED LINE INDICATES LINE OF EXTERIOR WALL BELOW

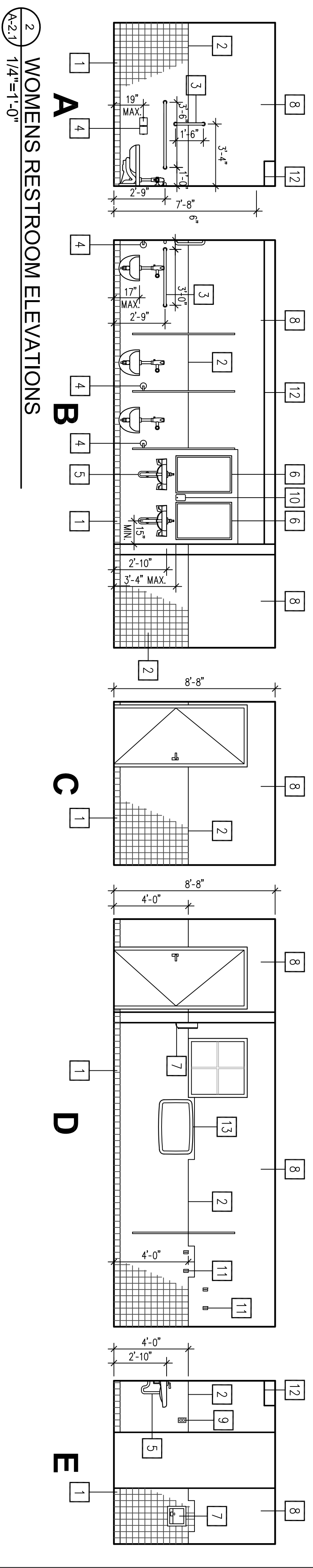
ROOF PLAN NOTES

- VERIFY WITH OWNER FOR REQUIRED WALL BRACKING/FLASHING
- VERIFY WITH OWNER FOR PAINT COLORS AND LOCATIONS
- ALL WORK MUST BE PERFORMED TO INDUSTRY STANDARDS
- ALL EXPOSED SURFACES TO BE PREPARED TO RECEIVE NEW FINISHES
- THE CONTRACTOR SHALL VERIFY ALL CONDITIONS AND DIMENSIONS WITHIN THE CONTRACT LIMITS AND NOTIFY THE ARCHITECT IMMEDIATELY IN WRITING OF ANY DEVIATION FROM THE CONTRACT DOCUMENTS NECESSARIED BY FIELD CONDITIONS OR ITEMS NOT COVERED
- ALL WORK SHALL BE IN COMPLIANCE WITH FEDERAL, STATE AND LOCAL CODES
- ALL WORK SHALL CONFORM TO THE LATEST ADOPTED ISSUES OF ALL CODES AND REGULATIONS
- CONTRACTOR SHALL PROVIDE FIRE EXTINGUISHERS AS REQUIRED BY THE FIRE DEPARTMENT
- ALL PLUMBING, MECHANICAL, AND ELECTRICAL PERSONS IS BINDER DESIGNED AND NOT THE RESPONSIBILITY OF THE ARCHITECT
- FLAME SPREAD AND SMOKE DEVELOPMENT REQUIREMENTS SHALL BE MET ON ALL INTERIOR FINISHES PER 2006 INTERNATIONAL BUILDING CODE TABLE 803.5
- PAINT EXTERIOR DOORS AND FRAMES TO MATCH ADJACENT COLOR - VERIFY



1 ROOF PLAN

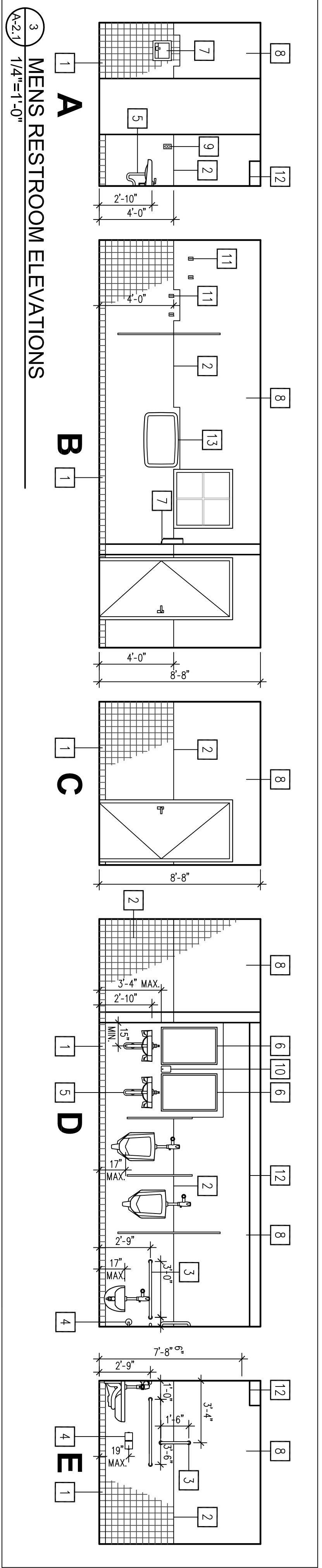
A-2.1 1/8"=1'-0"



2 WOMENS RESTROOM ELEVATIONS

A-2.1 1/4"=1'-0"

RESTROOM ELEVATIONS KEYED NOTES		RESTROOM NOTES	
1	TILE COVERED BASE - VERIFY COLOR W/ OWNER	5	INSULATE WATER SUPPLY AND DRAIN LINES - TYPICAL
2	4'-0" HIGH CERAMIC WALL TILE WANSKOT - RAISE TILE AROUND WALL HUNG FIXTURES/ACCESSORIES - INSTALLED BY CONTRACTOR	6	24" x 36" LAVATORY MIRROR - MOUNT BOTTOM AT 3'-4" A.F.F.
3	HORIZONTAL GRAB BARS IN EACH TOILET ROOM - MOUNT 2'-0" A.F.F. AND 18" VERTICAL GRAB BAR	7	ELECTRIC HAND DRYER
4	TOILET TISSUE DISPENSER - DOUBLE ROLL	8	EPOXY PAINT ABOVE CERAMIC TILE WANSKOT
		9	G.F.I. ELECTRICAL OUTLET - VERIFY W/ ELECTRICAL CONTRACTOR
		10	SOAP DISPENSER - BY OWNER
		11	COAT HOOKS - TYPICAL
		12	LIGHT COVE - REFER TO 3/A-2
		13	BAR CHANGING STATION - VERTICAL WALL BRACKING/FLASHING - VERIFY COLOR W/ OWNER - VERIFY ALL ACCESSIBILITY CLEARANCE REQUIREMENTS



3 MENS RESTROOM ELEVATIONS

A-2.1 1/4"=1'-0"